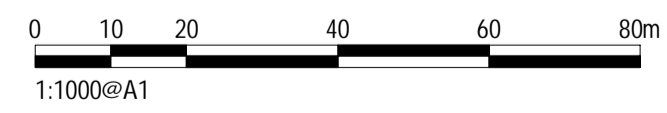
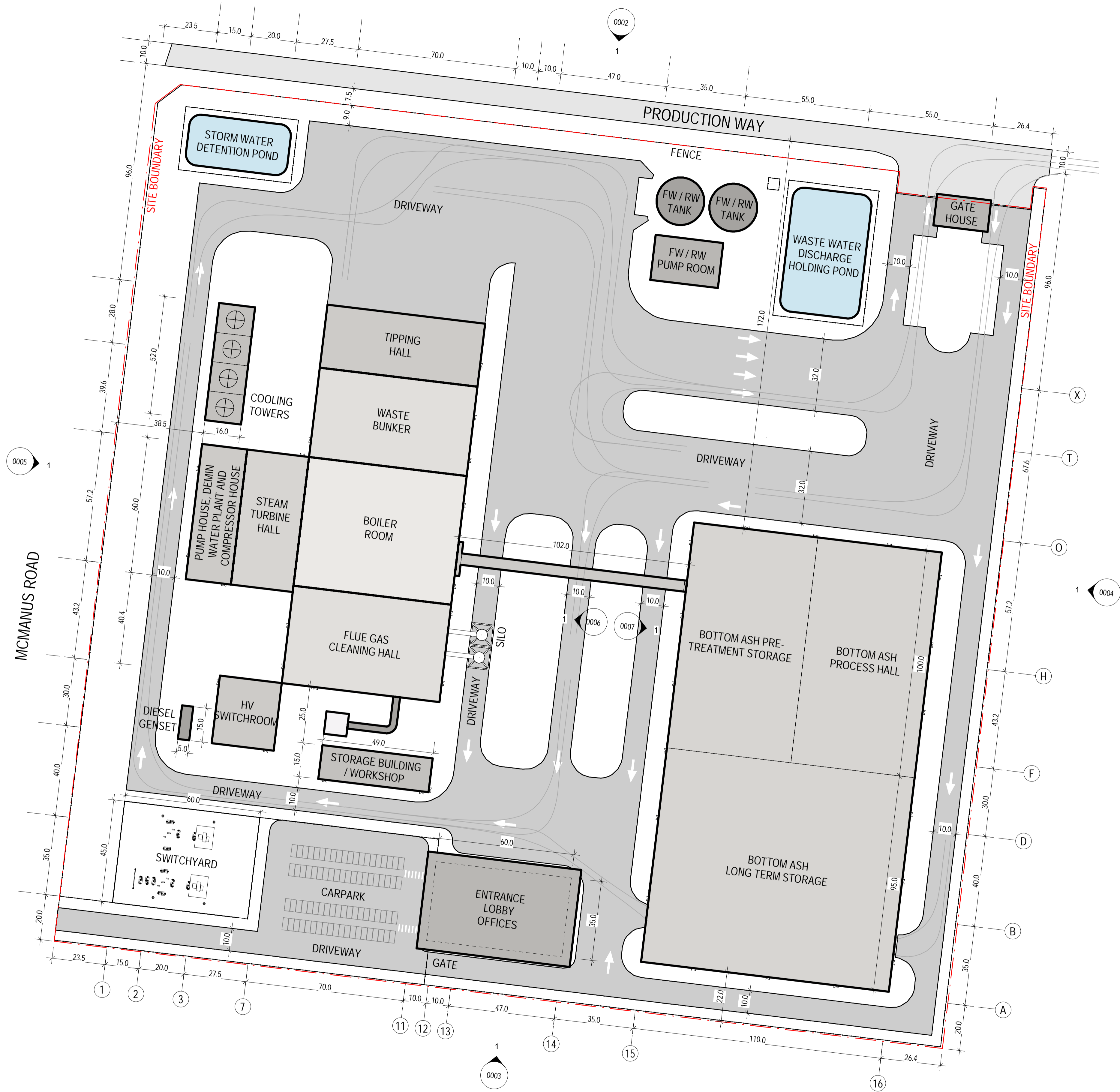


## Appendix C. Design Plans

**This copied document to be made available for the sole purpose of enabling its consideration and review as part of a planning process under the Planning and Environment Act 1987. The document must not be used for any purpose which may breach any copyright**

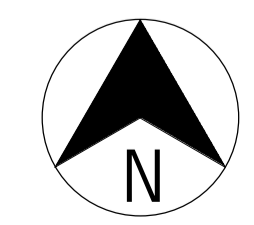
**ADVERTISED  
PLAN**

This copied document to be made available for the sole purpose of enabling its consideration and review as part of a planning process under the Planning and Environment Act 1987. The document must not be used for any purpose which may breach any copyright



TOWN PLANNING ISSUE

REV	DATE	APPD	REVISION
B	13/08/20		TOWN PLANNING SUBMISSION ISSUE
A	11/08/20		DRAFT PLANNING DOCUMENT FOR COMMENT



**ADVERTISED PLAN**

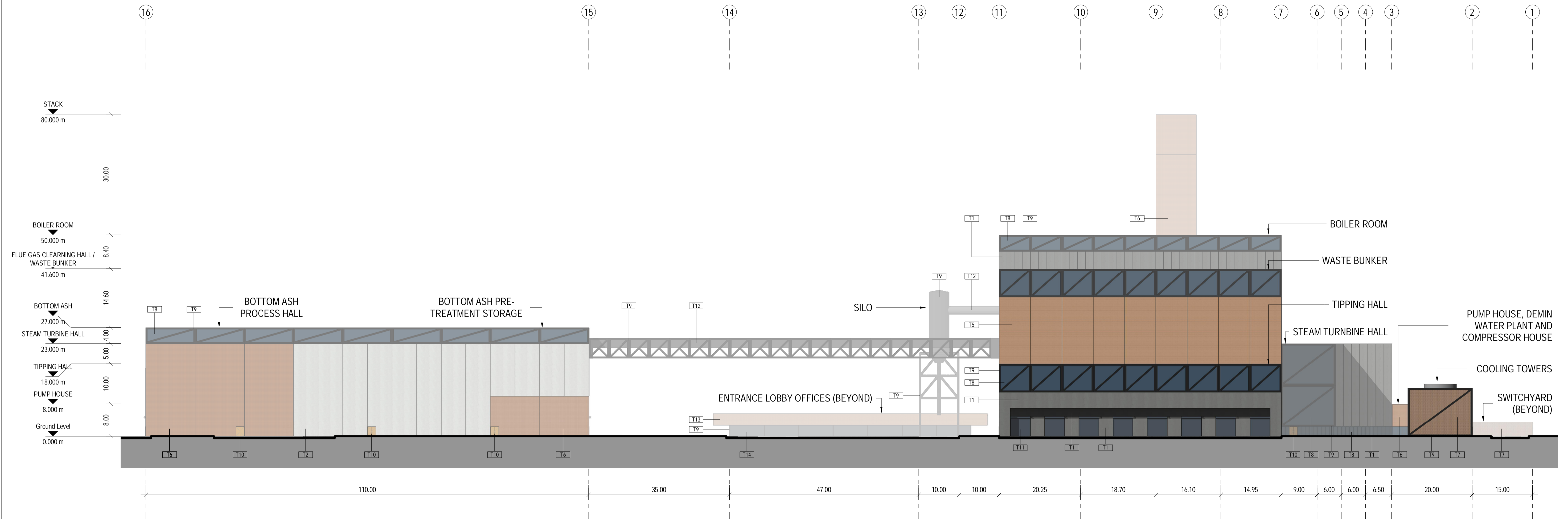
**Jacobs**

11th Floor, 452 Flinders Street  
 MELBOURNE, VIC 3000  
 AUSTRALIA  
 Tel: +61 3 8668 3000  
 Fax: +61 3 8668 3001  
 Web: www.jacobs.com

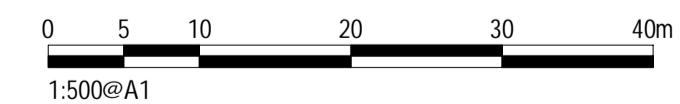
CLIENT	PROSPECT HILL INTERNATIONAL		
PROJECT	PROSPECT HILL ENERGY FROM WASTE PLANT, LARA		
DRAWN	DRAWING CHECK	REVIEWED	APPROVED
Z.ZHENG	K.MUNRO, J.SCANLAN	J.SCANLAN	J.SCANLAN
DESIGNED	DESIGN REVIEW	DATE	DATE
J.SCANLAN	R.INCAMPO, A.ELLIOTT	13/08/20	13/08/20

TITLE		SITE PLAN	
SCALE	DRAWING No	SUITABILITY	REV
1:1000	IS305100-0000-ARC-DRG-0001	B1	B

This copied document to be made available for the sole purpose of enabling its consideration and review as part of a planning process under the Planning and Environment Act 1987. The document must not be used for any purpose which may breach any copyright



MATERIAL SCHEDULE	
MATERIAL	DESCRIPTION
T1	GREY PRECAST CONCRETE WITH A CLASS 2 FINISH WITH A CUSTOM RUBBER FORM LINER TEXTURE - LARGER SCALE VERTICAL SQUARE CUT GROOVE PATTERN, 75MM DEEP
T2	WHITE COLOURED PRECAST CONCRETE, EXPOSED AGGREGATE WITH A WATER WASHED FINISH
T3	GREY PRECAST CONCRETE WITH A CLASS 2 FINISH WITH A CUSTOM RUBBER FORM LINER TEXTURE - FINER VERTICAL SOFT CUT GROOVE PATTERN, 40MM DEEP
T4	WHITE COLOURED PRECAST CONCRETE WITH A CLASS 2 FINISH WITH A CUSTOM RUBBER FORM LINER TEXTURE - MEDIUM VERTICAL BEVELLED EDGE GROOVE PATTERN, 60MM DEEP
T5	TERRACOTTA BRICK SLIP ADHERED TO PRECAST CONCRETE PANEL - 290 X 50 X 20 MM TILES LAID IN A HORIZONTAL 1/3 STRETCHER BOND PATTERN WITH GREY MORTAR
T6	TERRACOTTA BRICK SLIP ADHERED TO PRECAST CONCRETE PANEL - 290 X 50 X 20 MM TILES LAID IN A VERTICAL STACK BOND PATTERN WITH GREY MORTAR
T7	TERRACOTTA BRICK SLIP ADHERED TO PRECAST CONCRETE PANEL - 290 X 50 X 20 MM TILES LAID IN A HORIZONTAL 'HIT AND MISS' PATTERN WITH GREY MORTAR
T8	TRANSLUCENT MULTI WALLED - UV RESISTANT TYPE, BLUE TINT COLOUR IN 900MM WIDE PANELS FIXED INTO AN EXTRUDED ALUMINIUM BOX SECTION 50 X 150 WITH A DARK GREY POWDER COATED FINISH
T9	EXPOSED STEELWORK WITH AN INDUSTRIAL STANDARD EPOXY FACTORY APPLIED PAINTWORK - COLOUR: DARK GREY
T10	HINGED FIRE DOORS - SOLID CORE WITH A MILD STEEL SHEET FACE WITH A POWDER COATED FINISH - COLOUR: ORANGE
T11	GLAZED AND EXPOSED STEEL LIFT PANEL DOORS WITH AN INDUSTRIAL STANDARD EPOXY FACTORY APPLIED PAINT FINISH - COLOUR: DARK GREY, GLAZING BLUE TINT
T12	SUNDRY CLADDING: SOLID 3MM ALUMINIUM CLADDING WITH AN INDUSTRIAL STANDARD EPOXY FACTORY APPLIED FINISH - COLOUR: DARK GREY, FOLDED PANEL EDGE, BLACK SEALANT
T13	TERRACOTTA FULL BRICK 290 X 50 X 90 MM TILES LAID IN A HORIZONTAL 1/3 STRETCHER BOND PATTERN WITH GREY MORTAR
T14	VISION GLAZING, BLUE TINT DOUBLE GLAZED UNIT IN A EXTRUDED 150 X 50 ALUMINIUM BOX SECTION FRAME WITH A DARK GREY SATIN POWDER COAT FINISH, FRONT GLAZED, STRUCTURAL SILICONE, RANDOM WIDTH MULLION SPACING HORIZONTAL
T15	SUNDRY CLADDING: SOLID 3MM ALUMINIUM CLADDING WITH AN INDUSTRIAL STANDARD EPOXY FACTORY APPLIED FINISH - COLOUR: OFF WHITE, FOLDED PANEL EDGE, LIGHT GREY SEALANT



**DRAFT TOWN PLANNING ISSUE**

REV	DATE	APP'D	REVISION
A	11/08/20		DRAFT PLANNING DOCUMENT FOR COMMENT

**ADVERTISED PLAN**

**Jacobs**

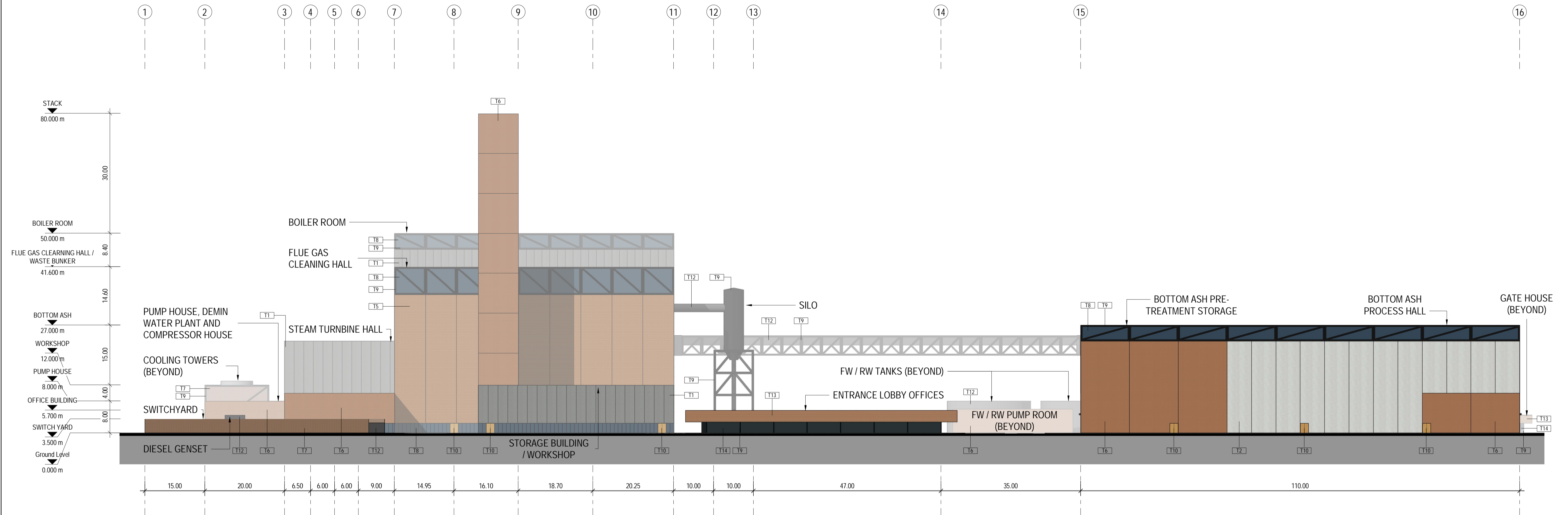
11th Floor, 452 Flinders Street  
 MELBOURNE, VIC 3000  
 AUSTRALIA

Tel: +61 3 8668 3000  
 Fax: +61 3 8668 3001  
 Web: www.jacobs.com

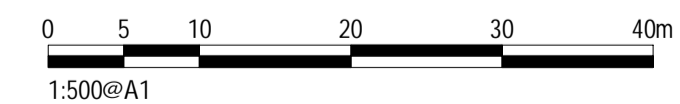
CLIENT	PROSPECT HILL INTERNATIONAL		
PROJECT	PROSPECT HILL ENERGY FROM WASTE PLANT, LARA		
DRAWN	DRAWING CHECK	REVIEWED	APPROVED
Z.ZHENG			
DESIGNED	DESIGN REVIEW	DATE	DATE
J.SCANLAN			

TITLE ELEVATION - NORTH			
SCALE 1:500	DRAWING No. IS305100-0000-ARC-DRG-0002	SUITABILITY B1	REV A

This copied document to be made available for the sole purpose of enabling its consideration and review as part of a planning process under the Planning and Environment Act 1987. The document must not be used for any purpose which may breach any copyright



MATERIAL SCHEDULE	
MATERIAL	DESCRIPTION
T1	GREY PRECAST CONCRETE WITH A CLASS 2 FINISH WITH A CUSTOM RUBBER FORM LINER TEXTURE - LARGER SCALE VERTICAL SQUARE CUT GROOVE PATTERN, 75MM DEEP
T2	WHITE COLOURED PRECAST CONCRETE, EXPOSED AGGREGATE WITH A WATER WASHED FINISH
T3	GREY PRECAST CONCRETE WITH A CLASS 2 FINISH WITH A CUSTOM RUBBER FORM LINER TEXTURE - FINER VERTICAL SOFT CUT GROOVE PATTERN, 40MM DEEP
T4	WHITE COLOURED PRECAST CONCRETE WITH A CLASS 2 FINISH WITH A CUSTOM RUBBER FORM LINER TEXTURE - MEDIUM VERTICAL BEVELLED EDGE GROOVE PATTERN, 60MM DEEP
T5	TERRACOTTA BRICK SLIP ADHERED TO PRECAST CONCRETE PANEL - 290 X 50 X 20 MM TILES LAID IN A HORIZONTAL 1/3 STRETCHER BOND PATTERN WITH GREY MORTAR
T6	TERRACOTTA BRICK SLIP ADHERED TO PRECAST CONCRETE PANEL - 290 X 50 X 20 MM TILES LAID IN A VERTICAL STACK BOND PATTERN WITH GREY MORTAR
T7	TERRACOTTA BRICK SLIP ADHERED TO PRECAST CONCRETE PANEL - 290 X 50 X 20 MM TILES LAID IN A HORIZONTAL 'HIT AND MISS' PATTERN WITH GREY MORTAR
T8	TRANSLUCENT MULTI WALLED - UV RESISTANT TYPE, BLUE TINT COLOUR IN 900MM WIDE PANELS FIXED INTO AN EXTRUDED ALUMINIUM BOX SECTION 50 X 150 WITH A DARK GREY POWDER COATED FINISH
T9	EXPOSED STEELWORK WITH AN INDUSTRIAL STANDARD EPOXY FACTORY APPLIED PAINTWORK - COLOUR: DARK GREY
T10	HINGED FIRE DOORS, SOLID CORE WITH A MILD STEEL SHEET FACE WITH A POWDER COATED FINISH - COLOUR: ORANGE
T11	GLAZED AND EXPOSED STEEL LIFT PANEL DOORS WITH AN INDUSTRIAL STANDARD EPOXY FACTORY APPLIED PAINT FINISH - COLOUR: DARK GREY, GLAZING BLUE TINT
T12	SUNDRY CLADDING: SOLID 3MM ALUMINIUM CLADDING WITH AN INDUSTRIAL STANDARD EPOXY FACTORY APPLIED FINISH - COLOUR: DARK GREY, FOLDED PANEL EDGE, BLACK SEALANT
T13	TERRACOTTA FULL BRICK 290 X 50 X 90 MM TILES LAID IN A HORIZONTAL 1/3 STRETCHER BOND PATTERN WITH GREY MORTAR
T14	VISION GLAZING, BLUE TINT DOUBLE GLAZED UNIT IN A EXTRUDED 150 X 50 ALUMINIUM BOX SECTION FRAME WITH A DARK GREY SATIN POWDER COAT FINISH, FRONT GLAZED, STRUCTURAL SILICONE, RANDOM WIDTH MULLION SPACING HORIZONTAL
T15	SUNDRY CLADDING: SOLID 3MM ALUMINIUM CLADDING WITH AN INDUSTRIAL STANDARD EPOXY FACTORY APPLIED FINISH - COLOUR: OFF WHITE, FOLDED PANEL EDGE, LIGHT GREY SEALANT



DRAFT TOWN PLANNING ISSUE

REV	DATE	APP'D	REVISION
A	11/08/20		DRAFT PLANNING DOCUMENT FOR COMMENT

ADVERTISED  
PLAN

Jacobs

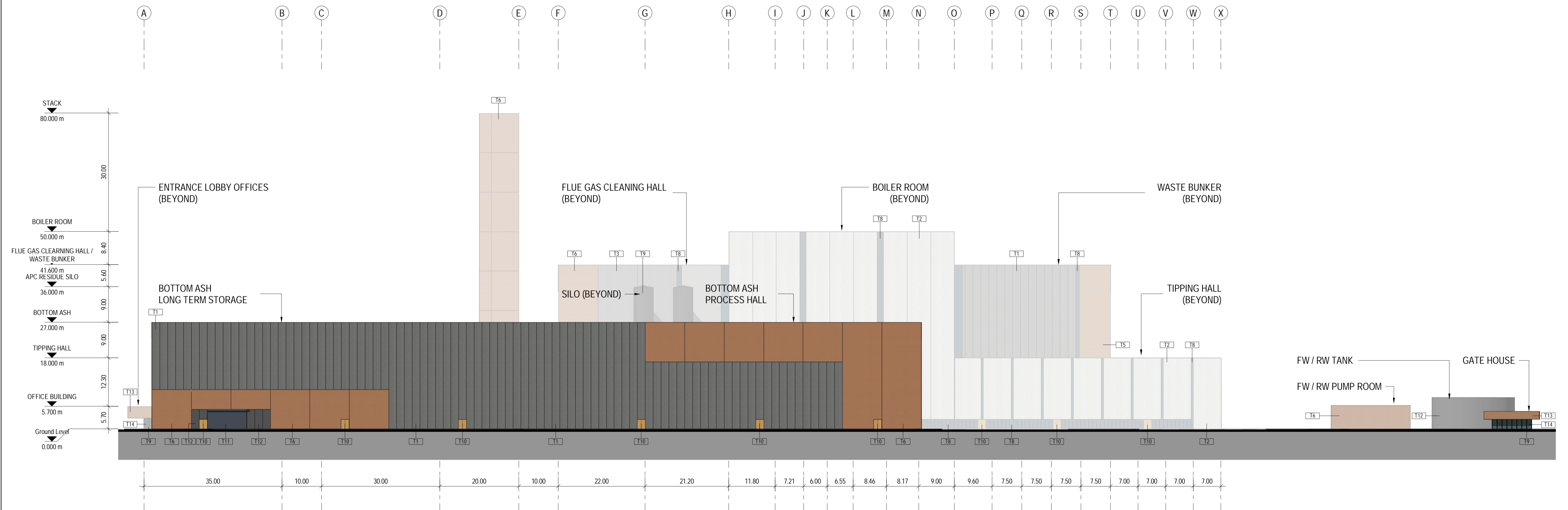
11th Floor, 452 Flinders Street  
 MELBOURNE, VIC 3000  
 AUSTRALIA

Tel: +61 3 8668 3000  
 Fax: +61 3 8668 3001  
 Web: www.jacobs.com

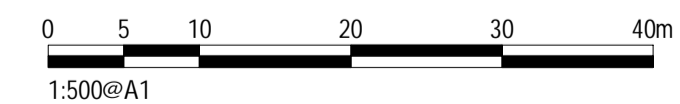
CLIENT	PROSPECT HILL INTERNATIONAL		
PROJECT	PROSPECT HILL ENERGY FROM WASTE PLANT, LARA		
DRAWN	DRAWING CHECK	REVIEWED	APPROVED
Z. ZHENG			
DESIGNED	DESIGN REVIEW	DATE	DATE
J. SCANLAN			

TITLE		ELEVATION - SOUTH	
SCALE	DRAWING No	SUITABILITY	REV
1 : 500	IS305100-0000-ARC-DRG-0003	B1	A

This copied document to be made available for the sole purpose of enabling its consideration and review as part of a planning process under the Planning and Environment Act 1987. The document must not be used for any purpose which may breach any copyright



MATERIAL SCHEDULE	
MATERIAL	DESCRIPTION
T1	GREY PRECAST CONCRETE WITH A CLASS 2 FINISH WITH A CUSTOM RUBBER FORM LINER TEXTURE - LARGER SCALE VERTICAL SQUARE CUT GROOVE PATTERN, 75MM DEEP
T2	WHITE COLOURED PRECAST CONCRETE, EXPOSED AGGREGATE WITH A WATER WASHED FINISH
T3	GREY PRECAST CONCRETE WITH A CLASS 2 FINISH WITH A CUSTOM RUBBER FORM LINER TEXTURE - FINER VERTICAL SOFT CUT GROOVE PATTERN, 40MM DEEP
T4	WHITE COLOURED PRECAST CONCRETE WITH A CLASS 2 FINISH WITH A CUSTOM RUBBER FORM LINER TEXTURE - MEDIUM VERTICAL BEVELLED EDGE GROOVE PATTERN, 60MM DEEP
T5	TERRACOTTA BRICK SLIP ADHERED TO PRECAST CONCRETE PANEL - 290 X 50 X 20 MM TILES LAID IN A HORIZONTAL 1/3 STRETCHER BOND PATTERN WITH GREY MORTAR
T6	TERRACOTTA BRICK SLIP ADHERED TO PRECAST CONCRETE PANEL - 290 X 50 X 20 MM TILES LAID IN A VERTICAL STACK BOND PATTERN WITH GREY MORTAR
T7	TERRACOTTA BRICK SLIP ADHERED TO PRECAST CONCRETE PANEL - 290 X 50 X 20 MM TILES LAID IN A HORIZONTAL 'HIT AND MISS' PATTERN WITH GREY MORTAR
T8	TRANSLUCENT MULTI WALLED - UV RESISTANT TYPE, BLUE TINT COLOUR IN 900MM WIDE PANELS FIXED INTO AN EXTRUDED ALUMINIUM BOX SECTION 50 X 150 WITH A DARK GREY POWDER COATED FINISH
T9	EXPOSED STEELWORK WITH AN INDUSTRIAL STANDARD EPOXY FACTORY APPLIED PAINTWORK - COLOUR: DARK GREY
T10	HINGED FIRE DOORS, SOLID CORE WITH A MILD STEEL SHEET FACE WITH A POWDER COATED FINISH - COLOUR: ORANGE
T11	GLAZED AND EXPOSED STEEL LIFT PANEL DOORS WITH AN INDUSTRIAL STANDARD EPOXY FACTORY APPLIED PAINT FINISH - COLOUR: DARK GREY, GLAZING BLUE TINT
T12	SUNDRY CLADDING: SOLID 3MM ALUMINIUM CLADDING WITH AN INDUSTRIAL STANDARD EPOXY FACTORY APPLIED FINISH - COLOUR: DARK GREY, FOLDED PANEL EDGE, BLACK SEALANT
T13	TERRACOTTA FULL BRICK 290 X 50 X 90 MM TILES LAID IN A HORIZONTAL 1/3 STRETCHER BOND PATTERN WITH GREY MORTAR
T14	VISION GLAZING, BLUE TINT DOUBLE GLAZED UNIT IN A EXTRUDED 150 X 50 ALUMINIUM BOX SECTION FRAME WITH A DARK GREY SATIN POWDER COAT FINISH, FRONT GLAZED, STRUCTURAL SILICONE, RANDOM WIDTH MULLION SPACING HORIZONTAL
T15	SUNDRY CLADDING: SOLID 3MM ALUMINIUM CLADDING WITH AN INDUSTRIAL STANDARD EPOXY FACTORY APPLIED FINISH - COLOUR: OFF WHITE, FOLDED PANEL EDGE, LIGHT GREY SEALANT



**DRAFT TOWN PLANNING ISSUE**

REV	DATE	APP'D	REVISION
A	11/08/20		DRAFT PLANNING DOCUMENT FOR COMMENT

**ADVERTISED PLAN**

**Jacobs**

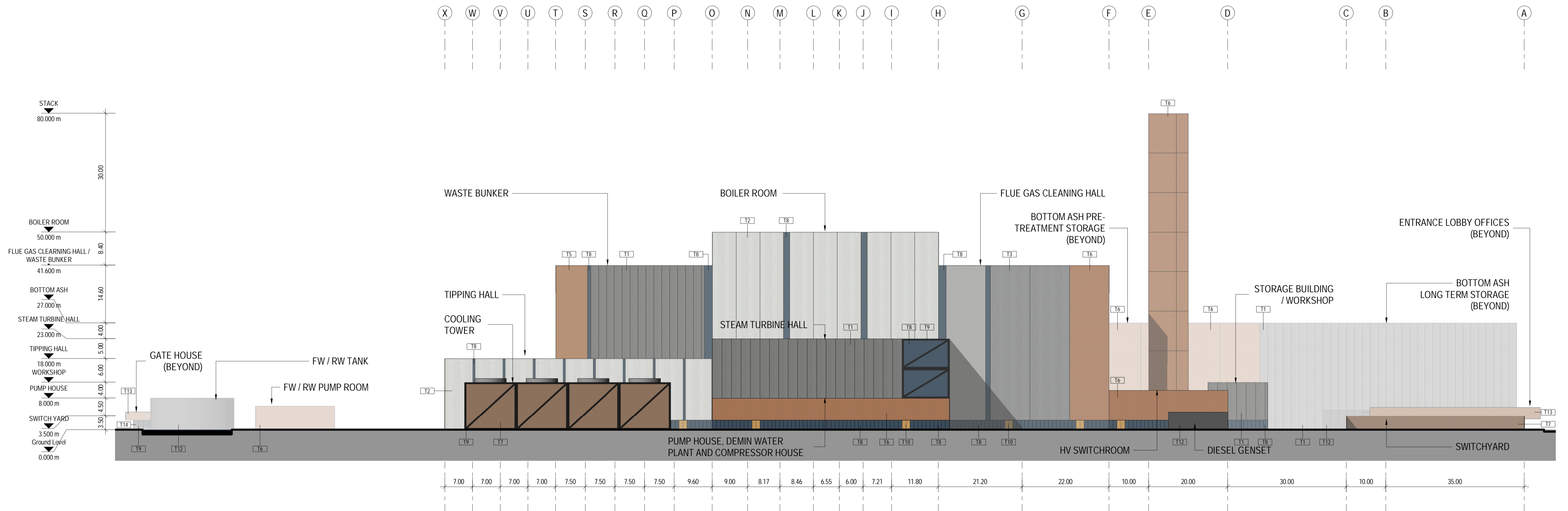
11th Floor, 452 Flinders Street  
 MELBOURNE, VIC 3000  
 AUSTRALIA

Tel: +61 3 8668 3000  
 Fax: +61 3 8668 3001  
 Web: www.jacobs.com

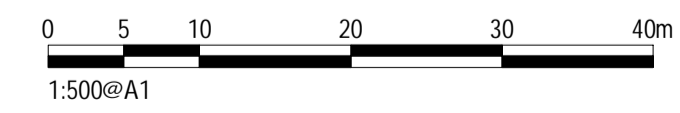
CLIENT	PROSPECT HILL INTERNATIONAL		
PROJECT	PROSPECT HILL ENERGY FROM WASTE PLANT, LARA		
DRAWN	DRAWING CHECK	REVIEWED	APPROVED
Z. ZHENG			
DESIGNED	DESIGN REVIEW	DATE	DATE
J. SCANLAN			

TITLE		ELEVATION - EAST	
SCALE	DRAWING No	SUITABILITY	REV
1 : 500	IS305100-0000-ARC-DRG-0004	B1	A

This copied document to be made available for the sole purpose of enabling its consideration and review as part of a planning process under the Planning and Environment Act 1987. The document must not be used for any purpose which may breach any copyright



MATERIAL SCHEDULE	
MATERIAL	DESCRIPTION
T1	GREY PRECAST CONCRETE WITH A CLASS 2 FINISH WITH A CUSTOM RUBBER FORM LINER TEXTURE - LARGER SCALE VERTICAL SQUARE CUT GROOVE PATTERN, 75MM DEEP
T2	WHITE COLOURED PRECAST CONCRETE, EXPOSED AGGREGATE WITH A WATER WASHED FINISH
T3	GREY PRECAST CONCRETE WITH A CLASS 2 FINISH WITH A CUSTOM RUBBER FORM LINER TEXTURE - FINER VERTICAL SOFT CUT GROOVE PATTERN, 40MM DEEP
T4	WHITE COLOURED PRECAST CONCRETE WITH A CLASS 2 FINISH WITH A CUSTOM RUBBER FORM LINER TEXTURE - MEDIUM VERTICAL BEVELLED EDGE GROOVE PATTERN, 60MM DEEP
T5	TERRACOTTA BRICK SLIP ADHERED TO PRECAST CONCRETE PANEL - 290 X 50 X 20 MM TILES LAID IN A HORIZONTAL 1/3 STRETCHER BOND PATTERN WITH GREY MORTAR
T6	TERRACOTTA BRICK SLIP ADHERED TO PRECAST CONCRETE PANEL - 290 X 50 X 20 MM TILES LAID IN A VERTICAL STACK BOND PATTERN WITH GREY MORTAR
T7	TERRACOTTA BRICK SLIP ADHERED TO PRECAST CONCRETE PANEL - 290 X 50 X 20 MM TILES LAID IN A HORIZONTAL 'HIT AND MISS' PATTERN WITH GREY MORTAR
T8	TRANSLUCENT MULTI WALLED - UV RESISTANT TYPE, BLUE TINT COLOUR IN 900MM WIDE PANELS FIXED INTO A EXTRUDED ALUMINIUM BOX SECTION 50 X 150 WITH A DARK GREY POWDER COATED FINISH
T9	EXPOSED STEELWORK WITH AN INDUSTRIAL STANDARD EPOXY FACTORY APPLIED PAINTWORK - COLOUR: DARK GREY
T10	HINGED FIRE DOORS, SOLID CORE WITH A MILD STEEL SHEET FACE WITH A POWDER COATED FINISH - COLOUR: ORANGE
T11	GLAZED AND EXPOSED STEEL LIFT PANEL DOORS WITH AN INDUSTRIAL STANDARD EPOXY FACTORY APPLIED PAINT FINISH - COLOUR: DARK GREY, GLAZING BLUE TINT
T12	SUNDRY CLADDING: SOLID 3MM ALUMINIUM CLADDING WITH AN INDUSTRIAL STANDARD EPOXY FACTORY APPLIED FINISH - COLOUR: DARK GREY, FOLDED PANEL EDGE, BLACK SEALANT
T13	TERRACOTTA FULL BRICK 290 X 50 X 90 MM TILES LAID IN A HORIZONTAL 1/3 STRETCHER BOND PATTERN WITH GREY MORTAR
T14	VISION GLAZING, BLUE TINT DOUBLE GLAZED UNIT IN A EXTRUDED 150 X 50 ALUMINIUM BOX SECTION FRAME WITH A DARK GREY SATIN POWDER COAT FINISH, FRONT GLAZED, STRUCTURAL SILICONE, RANDOM WIDTH MULLION SPACING HORIZONTAL
T15	SUNDRY CLADDING: SOLID 3MM ALUMINIUM CLADDING WITH AN INDUSTRIAL STANDARD EPOXY FACTORY APPLIED FINISH - COLOUR: OFF WHITE, FOLDED PANEL EDGE, LIGHT GREY SEALANT



DRAFT TOWN PLANNING ISSUE

REV	DATE	APP'D	REVISION
A	11/08/20		DRAFT PLANNING DOCUMENT FOR COMMENT

**ADVERTISED PLAN**

**Jacobs**

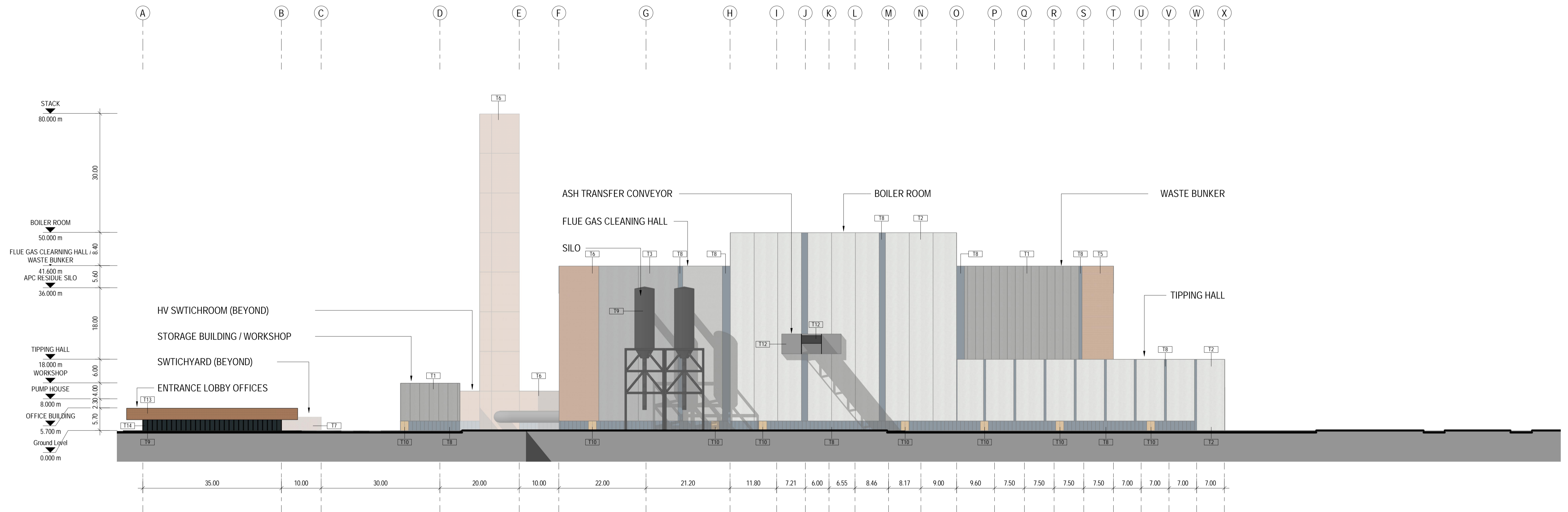
11th Floor, 452 Flinders Street  
 MELBOURNE, VIC 3000  
 AUSTRALIA

Tel: +61 3 8668 3000  
 Fax: +61 3 8668 3001  
 Web: www.jacobs.com

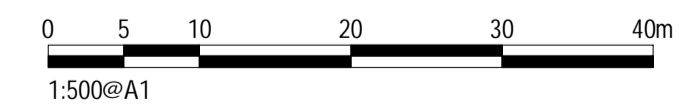
CLIENT	PROSPECT HILL INTERNATIONAL		
PROJECT	PROSPECT HILL ENERGY FROM WASTE PLANT, LARA		
DRAWN	DRAWING CHECK	REVIEWED	APPROVED
Z. ZHENG			
DESIGNED	DESIGN REVIEW	DATE	DATE
J. SCANLAN			

TITLE		ELEVATION - WEST	
SCALE	DRAWING No	SUITABILITY	REV
1 : 500	IS305100-0000-ARC-DRG-0005	B1	A

This copied document to be made available for the sole purpose of enabling its consideration and review as part of a planning process under the Planning and Environment Act 1987. The document must not be used for any purpose which may breach any copyright



MATERIAL SCHEDULE	
MATERIAL	DESCRIPTION
T1	GREY PRECAST CONCRETE WITH A CLASS 2 FINISH WITH A CUSTOM RUBBER FORM LINER TEXTURE - LARGER SCALE VERTICAL SQUARE CUT GROOVE PATTERN, 75MM DEEP
T2	WHITE COLOURED PRECAST CONCRETE, EXPOSED AGGREGATE WITH A WATER WASHED FINISH
T3	GREY PRECAST CONCRETE WITH A CLASS 2 FINISH WITH A CUSTOM RUBBER FORM LINER TEXTURE - FINER VERTICAL SOFT CUT GROOVE PATTERN, 40MM DEEP
T4	WHITE COLOURED PRECAST CONCRETE WITH A CLASS 2 FINISH WITH A CUSTOM RUBBER FORM LINER TEXTURE - MEDIUM VERTICAL BEVELLED EDGE GROOVE PATTERN, 60MM DEEP
T5	TERRACOTTA BRICK SLIP ADHERED TO PRECAST CONCRETE PANEL - 290 X 50 X 20 MM TILES LAID IN A HORIZONTAL 1/3 STRETCHER BOND PATTERN WITH GREY MORTAR
T6	TERRACOTTA BRICK SLIP ADHERED TO PRECAST CONCRETE PANEL - 290 X 50 X 20 MM TILES LAID IN A VERTICAL STACK BOND PATTERN WITH GREY MORTAR
T7	TERRACOTTA BRICK SLIP ADHERED TO PRECAST CONCRETE PANEL - 290 X 50 X 20 MM TILES LAID IN A HORIZONTAL 'HIT AND MISS' PATTERN WITH GREY MORTAR
T8	TRANSLUCENT MULTI WALLED - UV RESISTANT TYPE, BLUE TINT COLOUR IN 900MM WIDE PANELS FIXED INTO AN EXTRUDED ALUMINIUM BOX SECTION 50 X 150 WITH A DARK GREY POWDER COATED FINISH
T9	EXPOSED STEELWORK WITH AN INDUSTRIAL STANDARD EPOXY FACTORY APPLIED PAINTWORK - COLOUR: DARK GREY
T10	HINGED FIRE DOORS - SOLID CORE WITH A MILD STEEL SHEET FACE WITH A POWDER COATED FINISH - COLOUR: ORANGE
T11	GLAZED AND EXPOSED STEEL LIFT PANEL DOORS WITH AN INDUSTRIAL STANDARD EPOXY FACTORY APPLIED PAINT FINISH - COLOUR: DARK GREY, GLAZING BLUE TINT
T12	SUNDRY CLADDING: SOLID 3MM ALUMINIUM CLADDING WITH AN INDUSTRIAL STANDARD EPOXY FACTORY APPLIED FINISH - COLOUR: DARK GREY, FOLDED PANEL EDGE, BLACK SEALANT
T13	TERRACOTTA FULL BRICK 290 X 50 X 90 MM TILES LAID IN A HORIZONTAL 1/3 STRETCHER BOND PATTERN WITH GREY MORTAR
T14	VISION GLAZING, BLUE TINT DOUBLE GLAZED UNIT IN A EXTRUDED 150 X 50 ALUMINIUM BOX SECTION FRAME WITH A DARK GREY SATIN POWDER COAT FINISH, FRONT GLAZED, STRUCTURAL SILICONE, RANDOM WIDTH MULLION SPACING HORIZONTAL
T15	SUNDRY CLADDING: SOLID 3MM ALUMINIUM CLADDING WITH AN INDUSTRIAL STANDARD EPOXY FACTORY APPLIED FINISH - COLOUR: OFF WHITE, FOLDED PANEL EDGE, LIGHT GREY SEALANT



**DRAFT TOWN PLANNING ISSUE**

REV	DATE	APP'D	REVISION
A	11/08/20		DRAFT PLANNING DOCUMENT FOR COMMENT

**ADVERTISED PLAN**

**Jacobs**

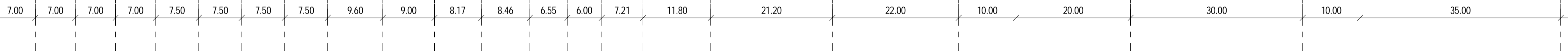
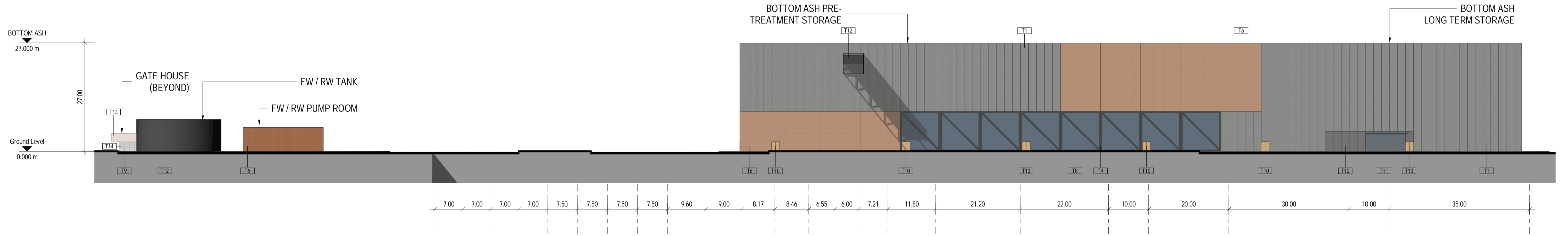
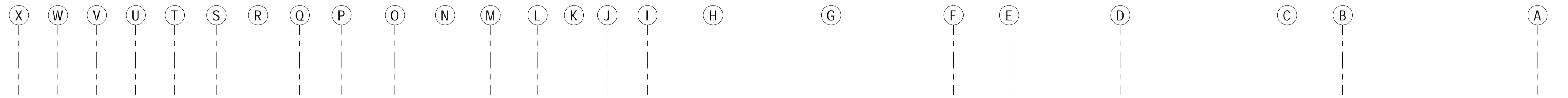
11th Floor, 452 Flinders Street  
 MELBOURNE, VIC 3000  
 AUSTRALIA

Tel: +61 3 8668 3000  
 Fax: +61 3 8668 3001  
 Web: www.jacobs.com

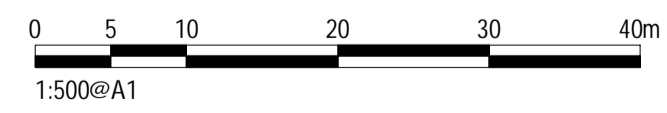
CLIENT	PROSPECT HILL INTERNATIONAL		
PROJECT	PROSPECT HILL ENERGY FROM WASTE PLANT, LARA		
DRAWN	DRAWING CHECK	REVIEWED	APPROVED
Z.ZHENG			
DESIGNED	DESIGN REVIEW	DATE	DATE
J.SCANLAN			

TITLE ELEVATION - EAST - BOILER ROOM			
SCALE 1:500	DRAWING No IS305100-0000-ARC-DRG-0006	SUITABILITY B1	REV A

This copied document to be made available for the sole purpose of enabling its consideration and review as part of a planning process under the Planning and Environment Act 1987. The document must not be used for any purpose which may breach any copyright



MATERIAL SCHEDULE	
MATERIAL	DESCRIPTION
T1	GREY PRECAST CONCRETE WITH A CLASS 2 FINISH WITH A CUSTOM RUBBER FORM LINER TEXTURE - LARGER SCALE VERTICAL SQUARE CUT GROOVE PATTERN, 75MM DEEP
T2	WHITE COLOURED PRECAST CONCRETE, EXPOSED AGGREGATE WITH A WATER WASHED FINISH
T3	GREY PRECAST CONCRETE WITH A CLASS 2 FINISH WITH A CUSTOM RUBBER FORM LINER TEXTURE - FINER VERTICAL SOFT CUT GROOVE PATTERN, 40MM DEEP
T4	WHITE COLOURED PRECAST CONCRETE WITH A CLASS 2 FINISH WITH A CUSTOM RUBBER FORM LINER TEXTURE - MEDIUM VERTICAL BEVELLED EDGE GROOVE PATTERN, 60MM DEEP
T5	TERRACOTTA BRICK SLIP ADHERED TO PRECAST CONCRETE PANEL - 290 X 50 X 20 MM TILES LAID IN A HORIZONTAL 1/3 STRETCHER BOND PATTERN WITH GREY MORTAR
T6	TERRACOTTA BRICK SLIP ADHERED TO PRECAST CONCRETE PANEL - 290 X 50 X 20 MM TILES LAID IN A VERTICAL STACK BOND PATTERN WITH GREY MORTAR
T7	TERRACOTTA BRICK SLIP ADHERED TO PRECAST CONCRETE PANEL - 290 X 50 X 20 MM TILES LAID IN A HORIZONTAL 'HIT AND MISS' PATTERN WITH GREY MORTAR
T8	TRANSLUCENT MULTI WALLED - UV RESISTANT TYPE, BLUE TINT COLOUR IN 900MM WIDE PANELS FIXED INTO A EXTRUDED ALUMINIUM BOX SECTION 50 X 150 WITH A DARK GREY POWDER COATED FINISH
T9	EXPOSED STEELWORK WITH AN INDUSTRIAL STANDARD EPOXY FACTORY APPLIED PAINTWORK - COLOUR: DARK GREY
T10	HINGED FIRE DOORS, SOLID CORE WITH A MILD STEEL SHEET FACE WITH A POWDER COATED FINISH - COLOUR: ORANGE
T11	GLAZED AND EXPOSED STEEL LIFT PANEL DOORS WITH AN INDUSTRIAL STANDARD EPOXY FACTORY APPLIED PAINT FINISH - COLOUR: DARK GREY, GLAZING BLUE TINT
T12	SUNDRY CLADDING: SOLID 3MM ALUMINIUM CLADDING WITH AN INDUSTRIAL STANDARD EPOXY FACTORY APPLIED FINISH - COLOUR: DARK GREY, FOLDED PANEL EDGE, BLACK SEALANT
T13	TERRACOTTA FULL BRICK 290 X 50 X 90 MM TILES LAID IN A HORIZONTAL 1/3 STRETCHER BOND PATTERN WITH GREY MORTAR
T14	VISION GLAZING, BLUE TINT DOUBLE GLAZED UNIT IN A EXTRUDED 150 X 50 ALUMINIUM BOX SECTION FRAME WITH A DARK GREY SATIN POWDER COAT FINISH, FRONT GLAZED, STRUCTURAL SILICONE, RANDOM WIDTH MULLION SPACING HORIZONTAL
T15	SUNDRY CLADDING: SOLID 3MM ALUMINIUM CLADDING WITH AN INDUSTRIAL STANDARD EPOXY FACTORY APPLIED FINISH - COLOUR: OFF WHITE, FOLDED PANEL EDGE, LIGHT GREY SEALANT



**DRAFT TOWN PLANNING ISSUE**

**ADVERTISED PLAN**

**Jacobs**

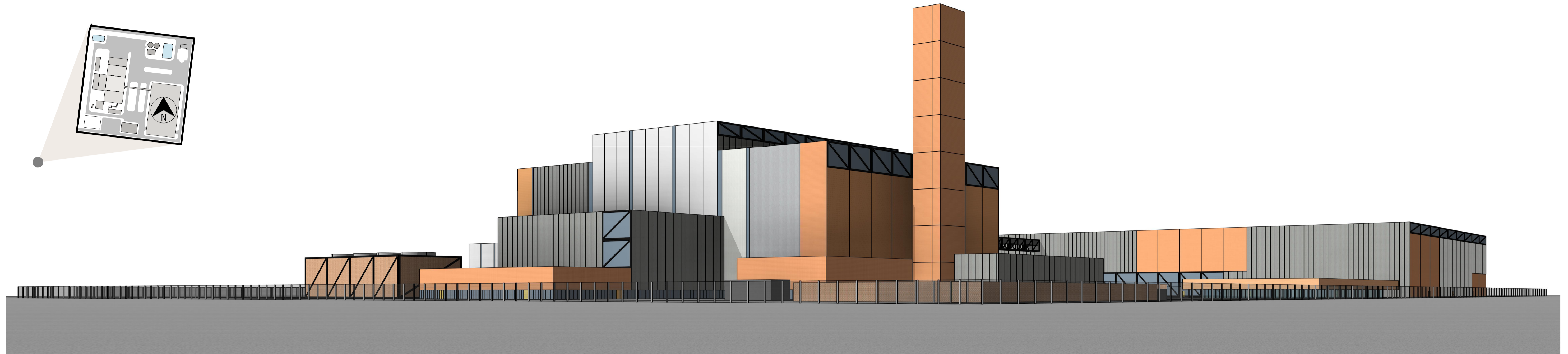
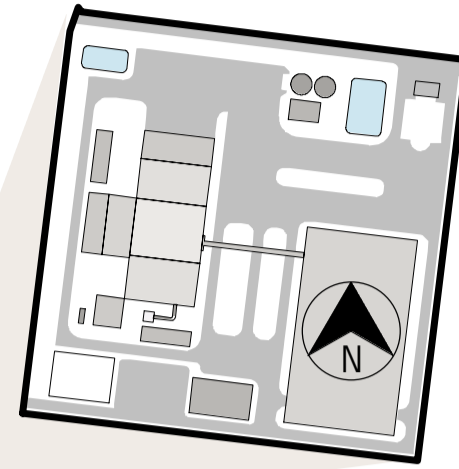
11th Floor, 452 Flinders Street  
 MELBOURNE, VIC 3000  
 AUSTRALIA  
 Tel: +61 3 8668 3000  
 Fax: +61 3 8668 3001  
 Web: www.jacobs.com

CLIENT	PROSPECT HILL INTERNATIONAL		
PROJECT	PROSPECT HILL ENERGY FROM WASTE PLANT, LARA		
DRAWN	DRAWING CHECK	REVIEWED	APPROVED
Z. ZHENG			
DESIGNED	DESIGN REVIEW	DATE	DATE
J. SCANLAN			

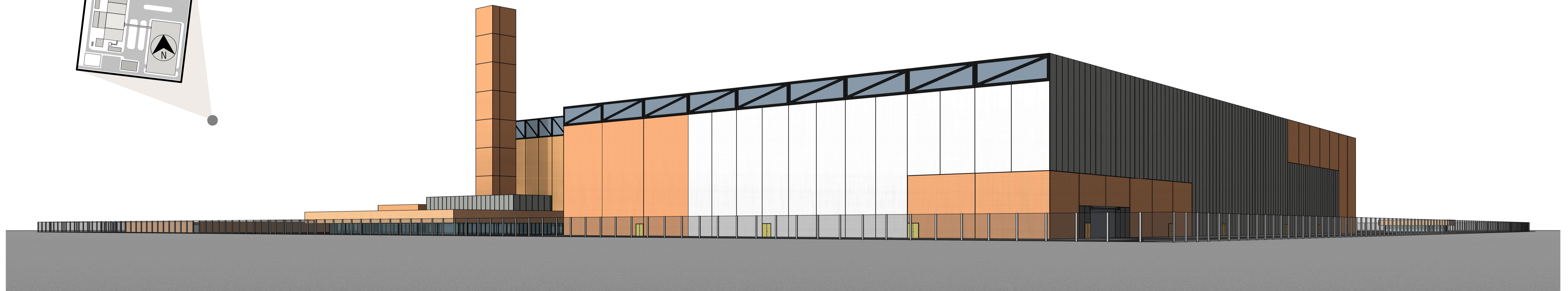
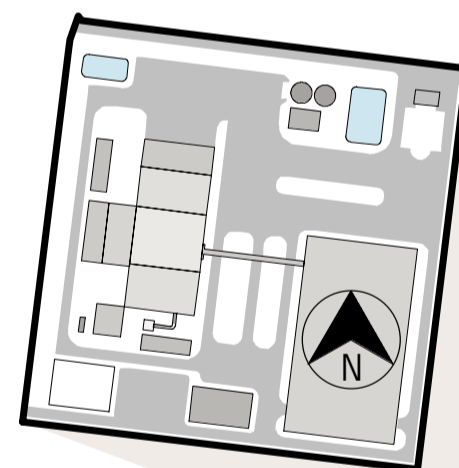
TITLE ELEVATION - WEST - BOTTOM ASH			
SCALE 1:500	DRAWING No. IS305100-0000-ARC-DRG-0007	SUITABILITY B1	REV A



This copied document to be made available for the sole purpose of enabling its consideration and review as part of a planning process under the Planning and Environment Act 1987. The document must not be used for any purpose which may breach any copyright



PERSPECTIVE - SOUTH WEST



PERSPECTIVE - SOUTH EAST

**DRAFT TOWN PLANNING ISSUE**

**ADVERTISED  
 PLAN**

**Jacobs**

11th Floor, 452 Flinders Street  
 MELBOURNE, VIC 3000  
 AUSTRALIA

Tel: +61 3 8668 3000  
 Fax: +61 3 8668 3001  
 Web: www.jacobs.com

CLIENT PROSPECT HILL INTERNATIONAL  
 PROJECT PROSPECT HILL ENERGY FROM WASTE PLANT,  
 LARA

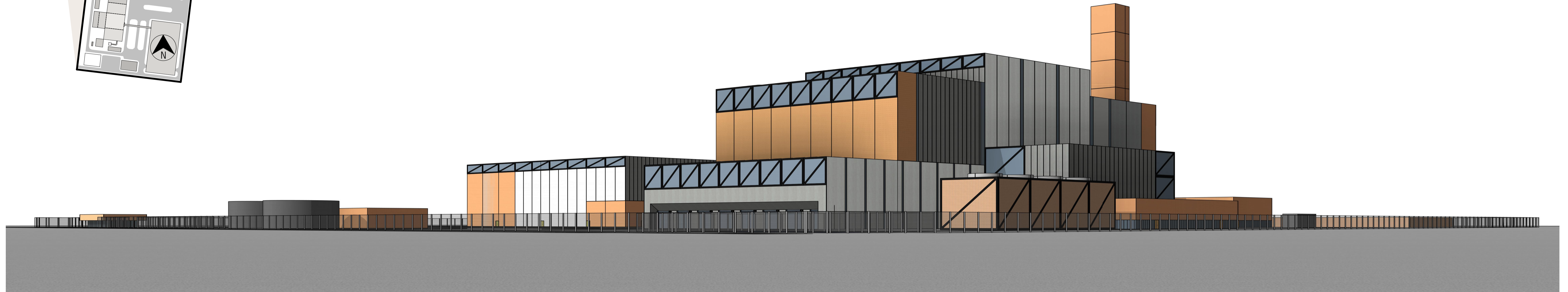
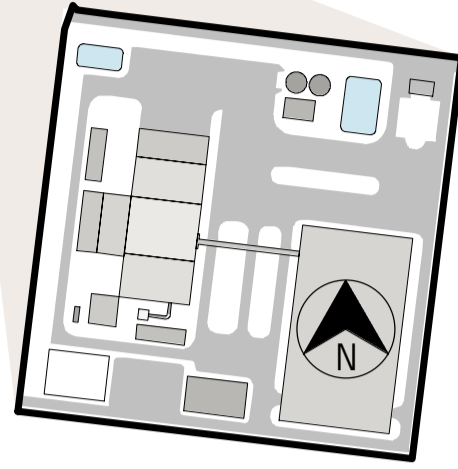
DRAWN Z. ZHENG	DRAWING CHECK	REVIEWED	APPROVED
DESIGNED J. SCANLAN	DESIGN REVIEW	DATE	DATE

TITLE  
 3D PERSPECTIVE VIEWS

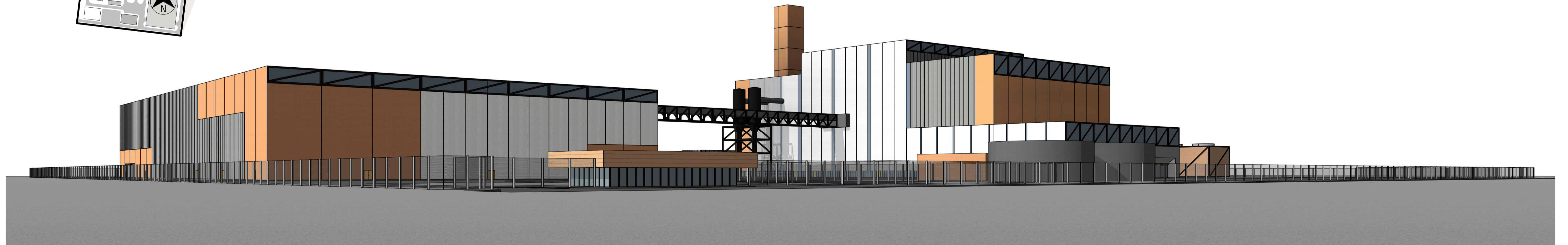
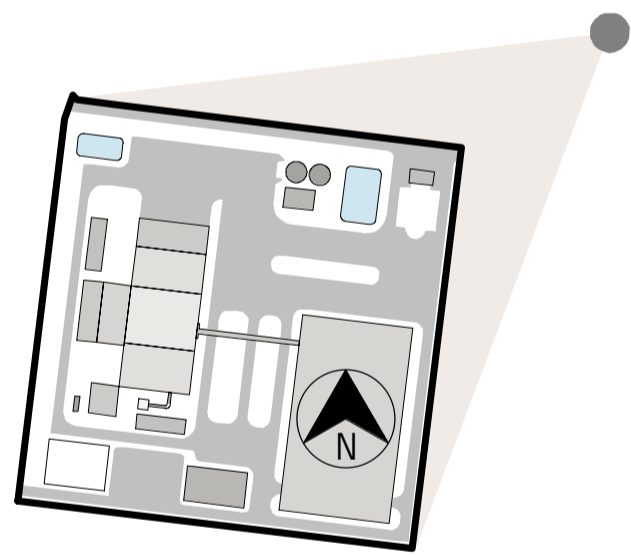
SCALE NTS	DRAWING No IS305100-0000-ARC-DRG-0008	SUITABILITY B1	REV A
--------------	--	-------------------	----------

REV	DATE	APP'D	REVISION
A	11/08/20		DRAFT PLANNING DOCUMENT FOR COMMENT

This copied document to be made available for the sole purpose of enabling its consideration and review as part of a planning process under the Planning and Environment Act 1987. The document must not be used for any purpose which may breach any copyright



PERSPECTIVE - NORTH WEST



PERSPECTIVE - NORTH EAST

DRAFT TOWN PLANNING ISSUE

**ADVERTISED  
 PLAN**

**Jacobs**

11th Floor, 452 Flinders Street  
 MELBOURNE, VIC 3000  
 AUSTRALIA

Tel: +61 3 8668 3000  
 Fax: +61 3 8668 3001  
 Web: www.jacobs.com

CLIENT	PROSPECT HILL INTERNATIONAL		
PROJECT	PROSPECT HILL ENERGY FROM WASTE PLANT, LARA		
DRAWN	DRAWING CHECK	REVIEWED	APPROVED
Z. ZHENG			
DESIGNED	DESIGN REVIEW	DATE	DATE
J. SCANLAN			

TITLE  
 3D PERSPECTIVE VIEWS

SCALE	DRAWING No	SUITABILITY	REV
NTS	IS305100-0000-ARC-DRG-0009	B1	A

REV	DATE	APP'D	REVISION
A	11/08/20		DRAFT PLANNING DOCUMENT FOR COMMENT



MONTAGE - NORTH WEST



MONTAGE - WEST

**DRAFT TOWN PLANNING ISSUE**

This copied document to be made available for the sole purpose of enabling its consideration and review as part of a planning process under the Planning and Environment Act 1987. The document must not be used for any purpose which may breach any copyright

**ADVERTISED PLAN**

**Jacobs**

11th Floor, 452 Flinders Street  
 MELBOURNE, VIC 3000  
 AUSTRALIA

Tel: +61 3 8668 3000  
 Fax: +61 3 8668 3001  
 Web: www.jacobs.com

CLIENT	PROSPECT HILL INTERNATIONAL		
PROJECT	PROSPECT HILL ENERGY FROM WASTE PLANT, LARA		
DRAWN	DRAWING CHECK	REVIEWED	APPROVED
Z. ZHENG			
DESIGNED	DESIGN REVIEW	DATE	DATE
J. SCANLAN			

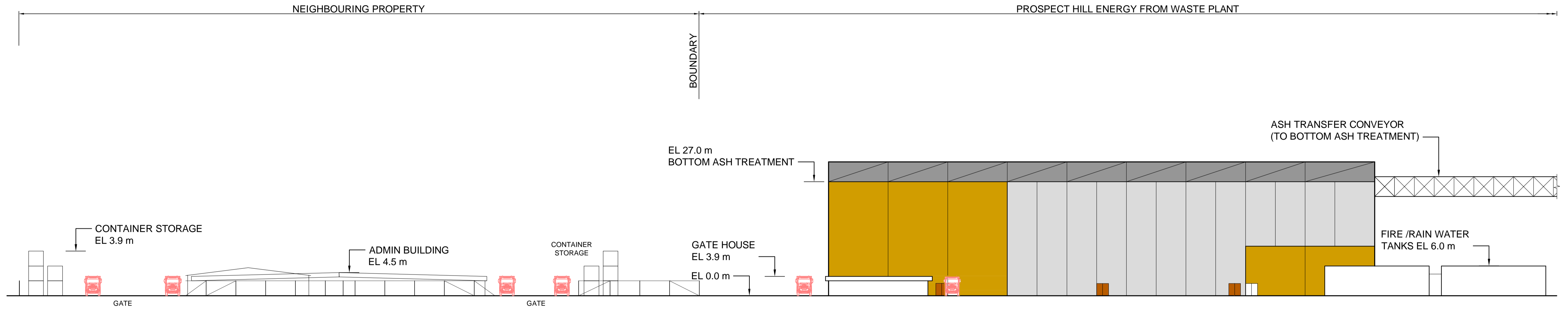
TITLE			
3D MONTAGES			
SCALE	DRAWING No	SUITABILITY	REV
NTS	IS305100-0000-ARC-DRG-0010	B1	A

REV	DATE	APP'D	REVISION
A	11/08/20		DRAFT PLANNING DOCUMENT FOR COMMENT

This copied document to be made available for the sole purpose of enabling its consideration and review as part of a planning process under the Planning and Environment Act 1987. The document must not be used for any purpose which may breach any copyright

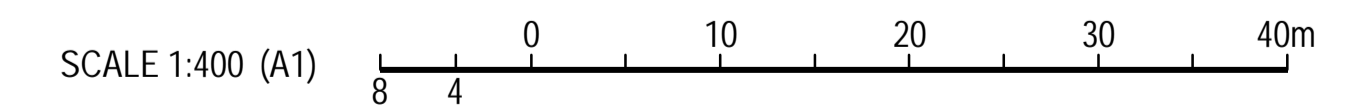
NOTES:

1. ALL DIMENSIONS AND ELEVATIONS ARE IN METERS & ARE APPROXIMATE ONLY.



NORTHERN ELEVATION VIEW (FACING EASTERN BOUNDARY NEIGHBOUR)  
 SCALE 1:400

ADVERTISED PLAN



PRELIMINARY

REV	DATE	APPD	REVISION	DRAWING NUMBER	REFERENCE DRAWING TITLE
A	XX.06.20		PRELIMINARY ISSUE		



**Jacobs**

ABN 37 001 024 095 and ACN 001 024 095  
 Jacobs Group (Australia) Pty Ltd  
 Level 7, 177 Pacific Highway  
 North Sydney, NSW 2060  
 AUSTRALIA

Tel: +61 2 9928 2100  
 Fax: +61 2 9928 2500  
 Web: www.jacobs.com

CLIENT PROSPECT HILL INTERNATIONAL			
PROJECT PROSPECT HILL ENERGY FROM WASTE PLANT, LARA			
DRAWN R. INCAMPO	DRAWING CHECK	REVIEWED	APPROVED
DESIGNED K. IVANUSIC	DESIGN REVIEW	DATE	DATE

TITLE PROSPECT HILL ENERGY FROM WASTE PLANT CONCEPT STUDY NORTHERN ELEVATION VIEW - SHEET 2		
SCALE 1:400	DRAWING No IS305100-0000-MC-DRG-0006	REV A

## 1. Attachment A - Lighting

### 1.1 Lighting Design Methodology

Prospect Hill International Pty Ltd (Prospect Hill International) will identify important lighting inputs such as activities performed in each area, frequency of night-time traffic, identify areas with security concerns etc. to select lighting design criteria appropriate for each area.

Lighting design criteria will be identified from the below standards (refer table 1)

Table 1 – Applicable Lighting Standards

Area	Standard code:
External Roads and pathways	AS/NZS1158.3.1
Interior Areas	AS/NZS 1680.2.1 AS/NZS 1680.2.2 AS/NZS 1680.2.3 AS/NZS 1680.2.4
External Working Areas	AS/NZS 1680.5:2012

### 1.2 Control of Obtrusive Light

Prospect Hill International is cognisant of the neighbours surrounding the proposed site and are aware of both commercial neighbours and some residential properties.

Prospect Hill International will design lighting to best practices and will ensure compliance with the relevant standards is achieved (refer Table 2).

Table 2 – Obtrusive Lighting Standard

Design Standard:	Standard code:
Control of the obtrusive effects of outdoor lighting.	AS/NZS4282:2019

Prospect Hill International will investigate and design measures to ensure compliance to the standard. Measures could include, utilisation of zero-cut off luminaires, short lighting poles, luminaires with precise optical control and avoiding high wattage luminaires.