

**ECHUCA LAW COURTS**

161 Sturt Street,  
Echuca,  
Yorta Yorta Country

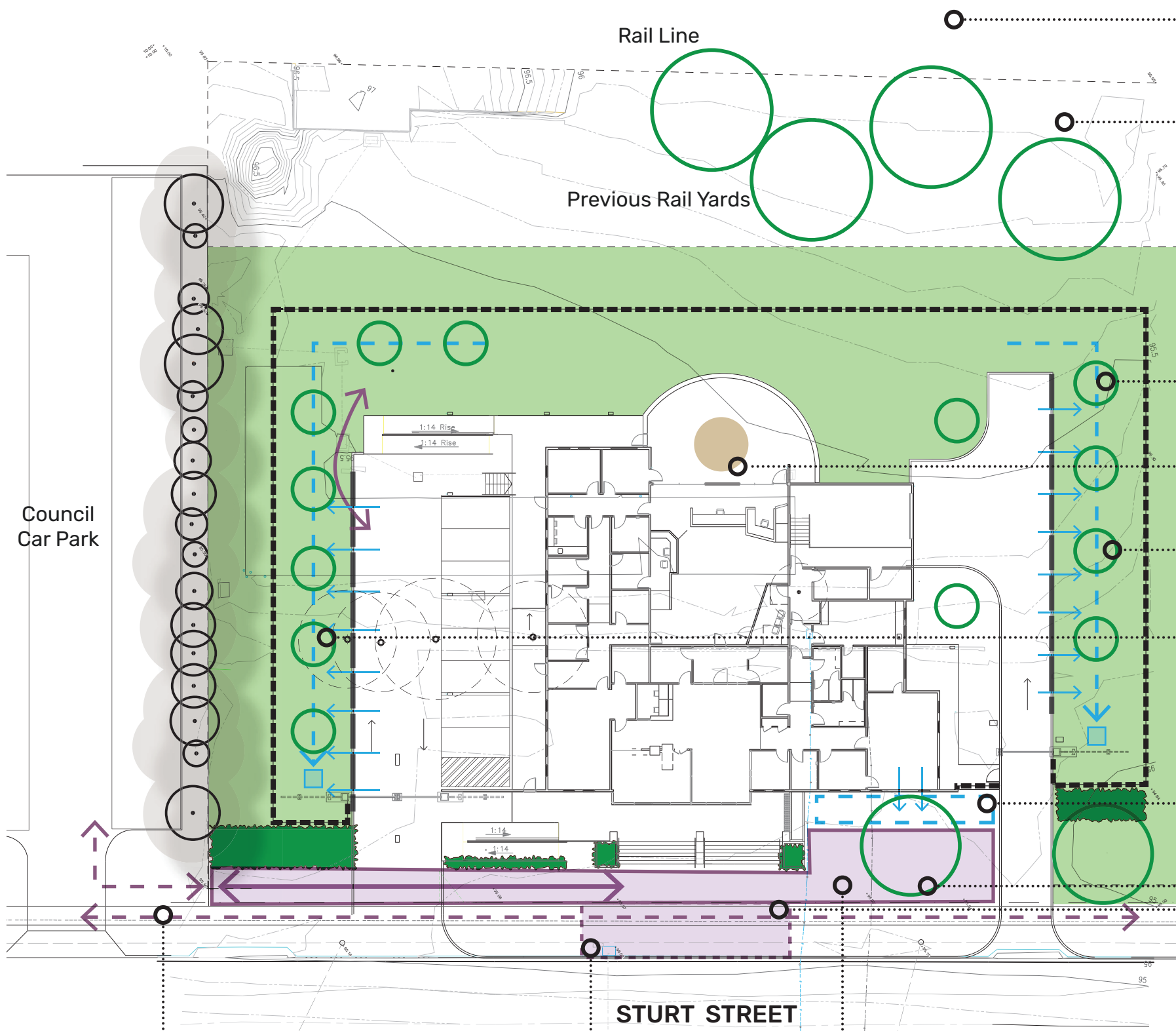
**CAMPASPE SHIRE COUNCIL**

- CONTENTS  
 LC00 - Cover  
 LC01 - Site Analysis  
 LC02 - Landscape Concept Plan  
 LC03 - Design Details & Images



Source: Nearmap July 21, 2025

# Landscape Concept Plans



**Rail Line**  
The site boundary is poorly defined onsite. Potentially safety fencing is required along the rail line.

**Rail Yards Options**  
If this space is within scope, consideration is needed of how the wider rehabilitated rail corridor asset is to be developed in the future, through  
Assuming LCV's capacity for works outside the fenced Court area is low, this area could simply be cleaned up.  
Given the low public use of the space, its an opportunity for some large indigenous trees (eg River Red Gums).

**SITE ANALYSIS**

Site soils are gravel/sand over founding clay at only 200mm depth, indicating limited/no topsoil and poor conditions for growth.

Soil classification is P due to uncontrolled fill >0.4m and 'proximity of trees that may cause abnormal moisture conditions across the site'.

Soil Contamination report indicates low-level Category D contamination (arsenic, lead, copper) in top 100mm, however soils meet standards for use onsite or reuse as fill.

Site is within flood overlay, and minimum building FLL is 96.20 AHD

**Drainage Swale**  
Opportunity to drain hard surfacing to grassed swale as passive irrigation for tree planting.

**Koorie Court Space**  
Space with natural materials reflecting connection to country, and informal seating area.

**Deciduous Trees**  
North-facing area should be shaded with deciduous trees. All trees to be min 4m from security fence, and compact canopy.

**Evergreen Trees**  
South-facing area should be protected from winds with evergreen trees.

**Potential Raingarden**  
Potential raingarden supplied from adjacent downpipe/s provides passive irrigation.

**Feature Tree**  
Feature indigenous tree, potentially with passive irrigation (drainage) provided.

**DESIGN BRIEF**

Design must be guided by the following design principles:

- Human-centred** - must consider users with solutions that use natural and locally inspired materials, such as wood and stone in a cultural and physical context;
- Legible** - must be distinctive, easy to find and navigate, site responsive and with calm transitions and simple navigation;
- Functional** - spaces that are fit for purpose;
- Safe** - using CPTED and noting the priority of the public, staff, custodial/police zoning;
- Sustainable** - supporting local enterprise, creating flexible spaces for evolving service models, water and energy saving, waste reduction, long term durability, land ow maintenance.

In addition, following consultation, the landscaping generally and specifically the Koorie Court are to embody Yorta Yorta voices and culture through design, artwork, language, Indigenous landscaping, and dedicated Koorie Court facilities.

Council Car Park

Previous Rail Yards

Rail Line

STURT STREET

**ADVERTISED PLAN**

**Pedestrian Links by Council**  
DDA compliant paving link to carpark and future footpath by Council to link Court to nearby facilities, public transport etc.

**Forecourt**  
Pavement to kerb if kerbside parking is planned.

**Waiting/Meet-up Area**  
Seating for users before and after hearings.

**KEY**

	Sand/Gravel		Tree		Permeable Kerb
	Paved area		Surface flow		Security Fence
	Pedestrian Link		Swale		Low Planting Opportunity
	Footpath (Campaspe Shire)		Stormwater Pit		

**SITE ANALYSIS & OPPORTUNITIES**

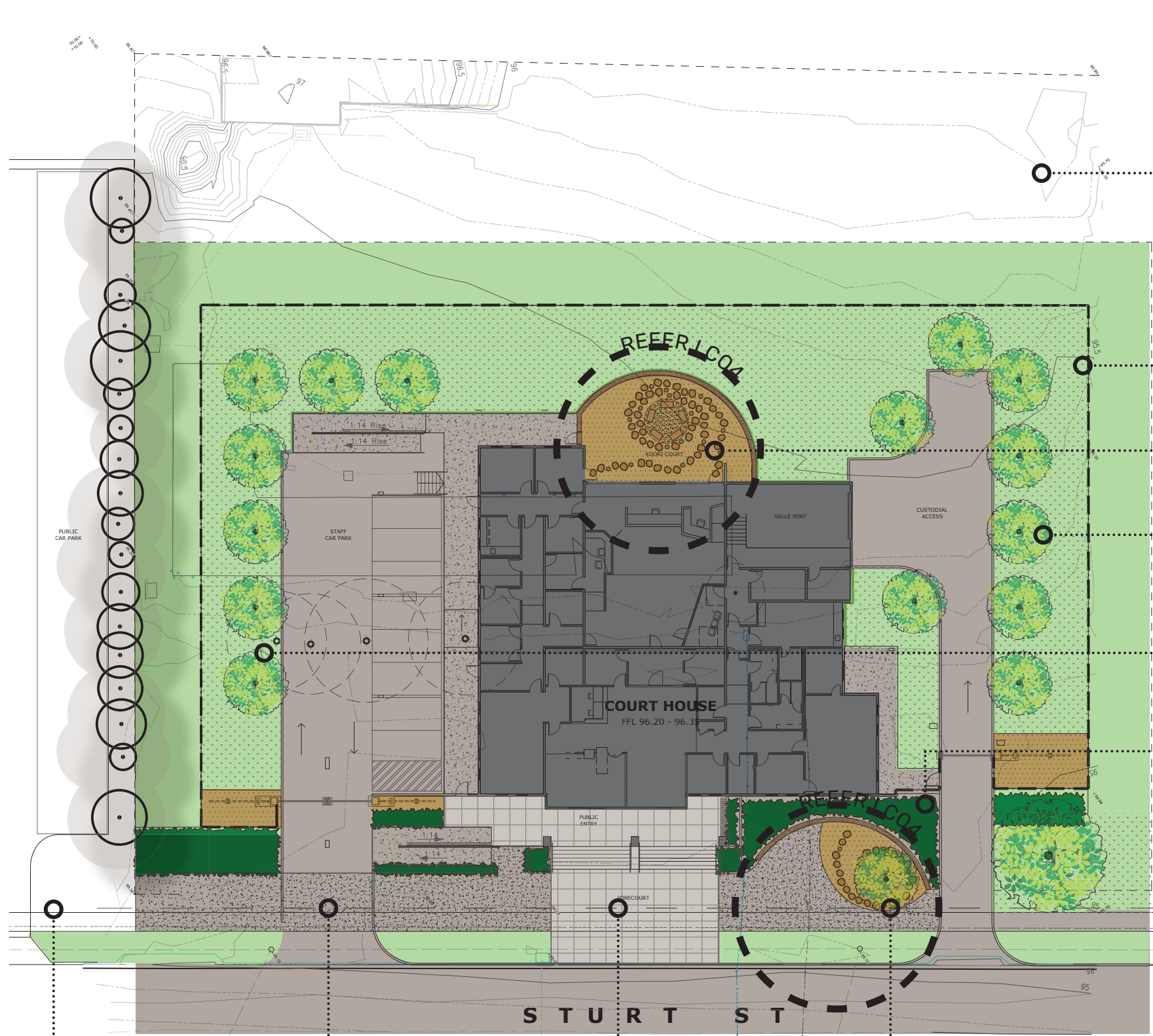
ECHUCA LAW COURTS  
161 Sturt Street, Echuca  
Yort Yorta Country

DWG #: 2516 LC02  
REV: A

DATE: Aug 2025  
SCALE: 1:400 @ A3



2516 Echuca Concepts



**Rail Yards Area**  
Trim and grade to make area safe and maintainable, with a groomed gravel surface.

**Drainage Swale**  
Paved surfaces to drain to bio-infiltration swale to provide passive irrigation for tree planting.

**Koorie Court Space**  
Space with natural materials reflecting connection to country, and informal seating area. Refer LC04

**Shade Trees**  
Black Kurrajong (*Brachychiton populneus* 'Jerilderie Red') provide shade, offset 2m from BOK, 4m from perimeter fencing. Trees are drought tolerant, and high-branching with an upright habit.

**Evergreen Trees**  
South-facing area should be protected from winds with evergreen Native Frangipani trees (*Hymenosporum flavum*).

**Potential Raingarden**  
Potential raingarden supplied from adjacent downpipe/s provides passive irrigation.

**Pedestrian Links**  
Council will need to provide DDA compliant paving link to carpark and future footpath to link the Court to nearby facilities, public transport etc.

**Footpaths**  
Exposed aggregate concrete pavement indicates link to public carpark, with pedestrian priority at staff carpark entry.

**Forecourt Paving**  
Provide subtle wayfinding by continuing the pavement style used at the entry below the steps (potentially to back of kerb).

**Forecourt Landscaping**  
Curved low sitting wall with a feature indigenous Weeping Myall tree (*Acacia pendula*) planted into compacted granitic gravel surface. Potential for passive irrigation & drainage. Refer LC04.

**LEGEND**

- Existing tree: T2 *Eucalyptus scoparia* 8x4m (RETAIN) - To be retained and protected during construction.
- Existing tree: T1 *Betula pendula* (REMOVE) - To be removed prior to construction.
- Proposed tree: Refer Planting Schedule, Details &/or Specifications
- Indigenous Planting: Shrubs, groundcovers and tufting plants in prepared garden bed.
- Plain concrete, or selected pavers or tiles to Architects specification.
- Concrete Pavers: Anston reconstituted concrete pavers, laid on pedestals or mortar, finish, colour and layout TBC
- Exposed aggregate concrete
- Concrete/Asphalt/Permeable driveway: To engineers design
- Sand: Washed sand, uncompacted.
- Gravel: Granitic Gravel, compacted
- Grass lawn: Buffalo
- Garden Bed: Topsoiled and mulched.
- Mowing Strip: Concrete
- Proposed fence as noted
- Natural local stone, or sawn bluestone, steppers
- Natural local stone, or sandstone/limestone, block 1000x500x500 nom.
- Rammed Earth Wall: 500H sitting wall, with layered bands of local gravel/sand blends and shells.

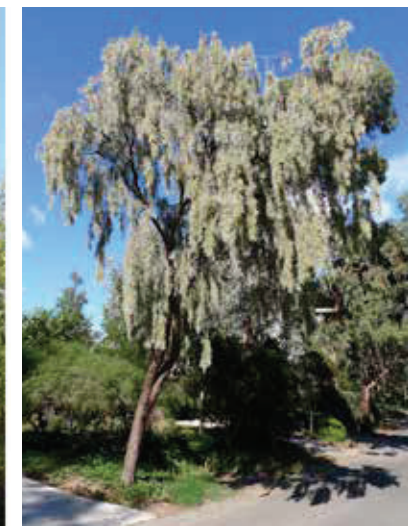
**Black Kurrajong**  
*Brachychiton populneus* 'Jerilderie Red'



**Native Frangipanni**  
*Hymenosporum flavum*



**Weeping Myall**  
*Acacia pendula*



**LANDSCAPE CONCEPT PLAN**

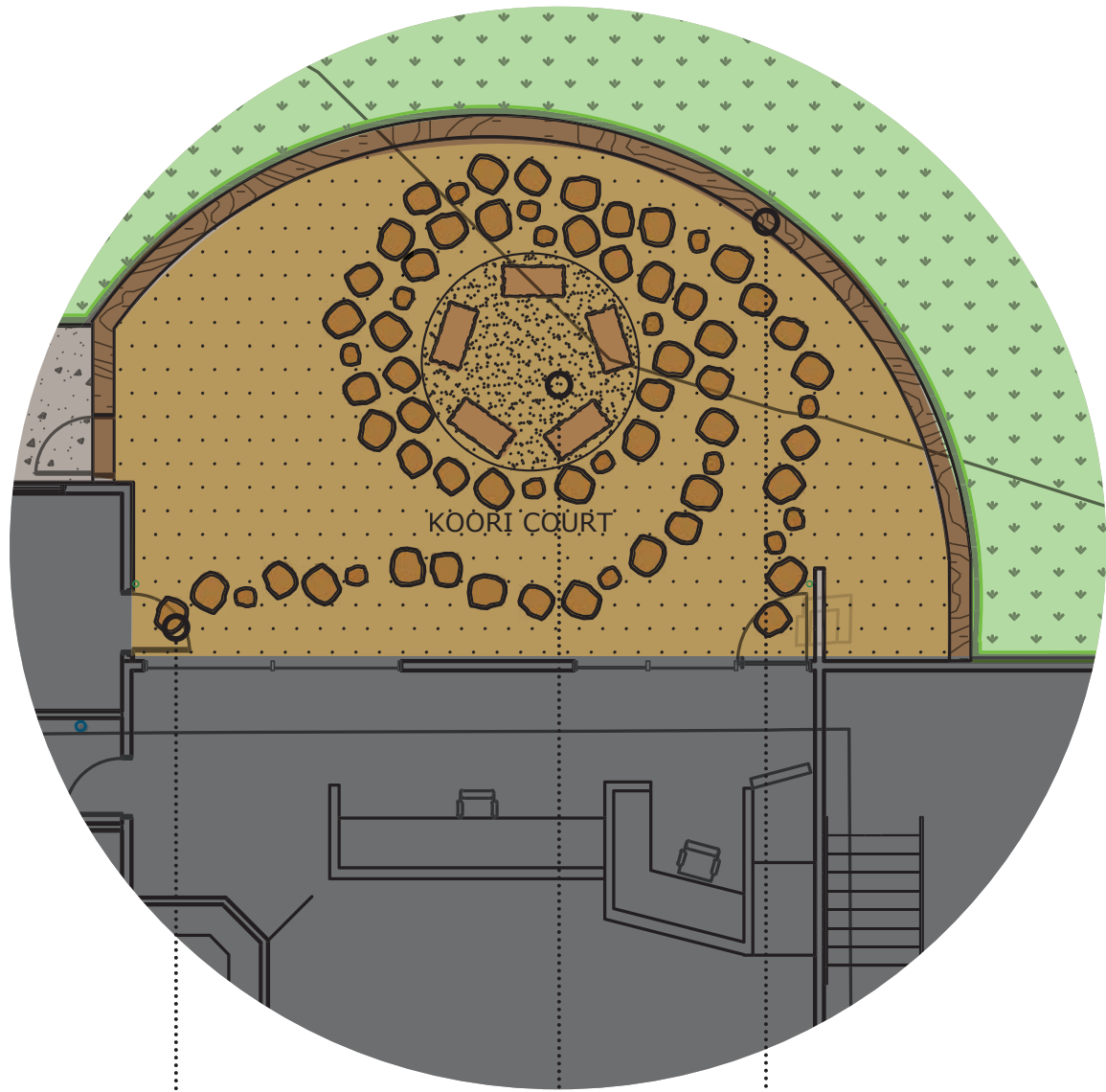
ECHUCA LAW COURTS  
161 Sturt Street, Echuca  
Yort Yorta Country

**ADVERTISED PLAN**

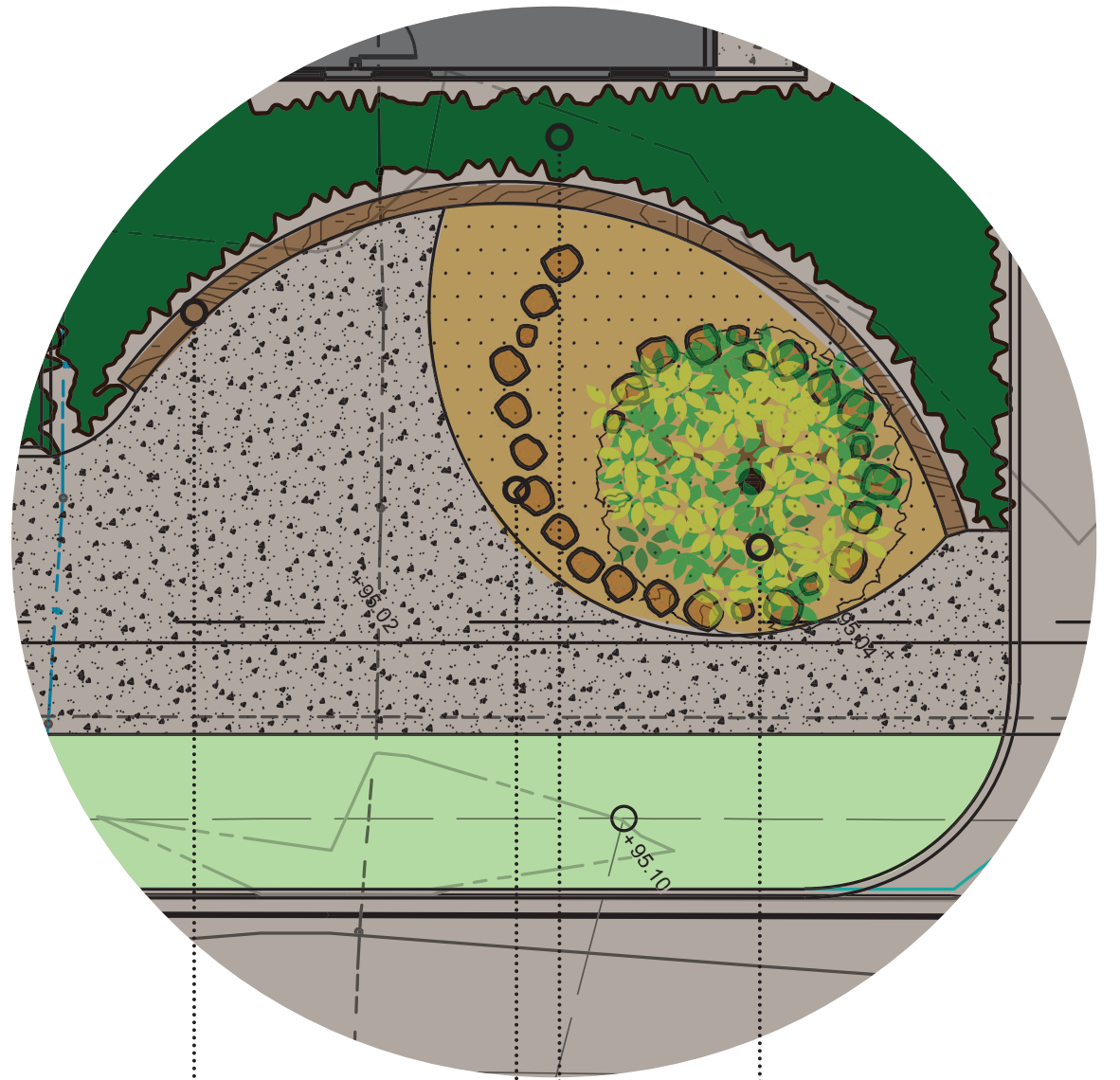


DWG #: 2516 LC03  
REV: A  
DATE: Aug 2025  
SCALE: 1:400 @ A3

**Perry Mills & Associates**  
Landscape Architecture  
www.perrymills.com.au  
2516 Echuca Concepts



**ADVERTISED PLAN**



**Stepping Stones**

Local stone or sawn bluestone steppers suggesting movement and reflection, two paths coming together and resolving around a central place for discussion.

**Central Sitting Area**

Local stone or roughly squared limestone/sandstone quarry rock in a circle with sand surfacing.

**Rammed Earth Wall**

Layered earth materials including locally sourced gravels and sands, potentially including drifts of shell, bones, charcoal etc. Layering indicates the deep historical habitation in the land.

**Rammed Earth Sitting Wall**

Uses the same contractor, formwork and materials as for the Koorie Courtyard.

**Stepping Stones**

Spiral arrangement encircling the tree.

**Potential Rain Garden**

Indigenous plant species using harvested rainwater or passive irrigation.

**Weeping Myall**

Acacia pendula



Note that design suggestions are subject to consultation with Traditional Owners. There is the opportunity for Yorta Yorta collaboration on directing the meaning and symbolism of the landscape elements, and for a local artist/craftsperson to design and produce some elements, eg the sitting stones.

**DETAIL AREAS & IMAGES**

ECHUCA LAW COURTS  
161 Sturt Street, Echuca  
Yort Yorta Country

DWG #: 2516 LC04  
REV: A



DATE: Aug 2025