

The arboricultural reports have been prepared in stages.

The following report provides the final assessment of the impacts on trees:

- *Arboricultural Impact Assessment, 535-537 Maroondah Highway Coldstream VIC 3770, 4 April 2023*

The following reports have been included in the submission as they provide background information about the health and condition of trees that are impacted and avoided by the project:

- *Access Road, Design Review (7 June 2022)*
- *Bridge, Preliminary Tree Assessment & Design Review (7 June 2022)*
- *Signalised Intersection, Preliminary Tree Assessment & Arboricultural Impact Assessment (7 June 2022)*
- *Ingram Road Intersection, Preliminary Tree Assessment & Arboricultural Impact Assessment (23 June 2022)*

Table 1 provides a summary of each tree that is impacted by the project. To identify the location of the tree, refer to the 'Area' and then the 'ID Number' in order to locate it in Figure 1.

**This copied document to be made available
for the sole purpose of enabling
its consideration and review as
part of a planning process under the
Planning and Environment Act 1987.
The document must not be used for any
purpose which may breach any
copyright**

ADVERTISED PLAN

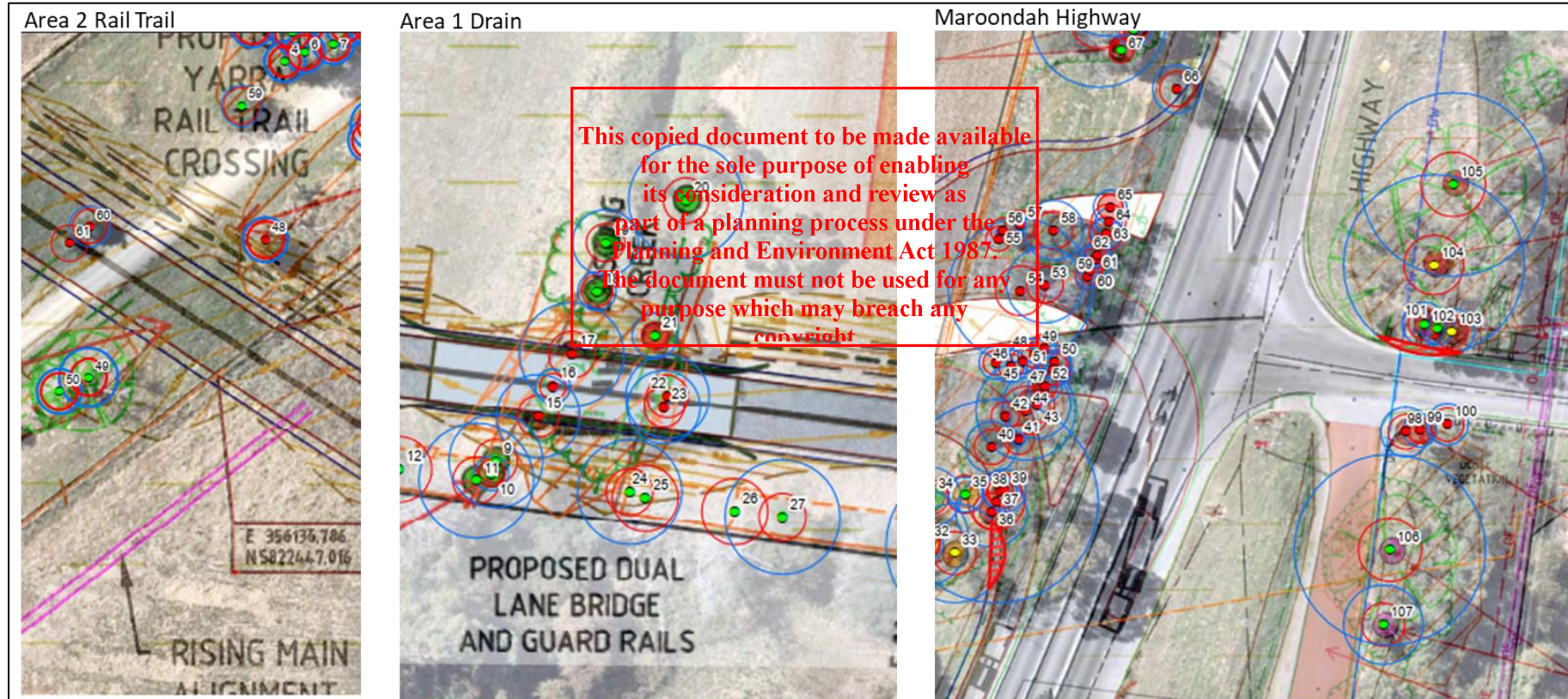
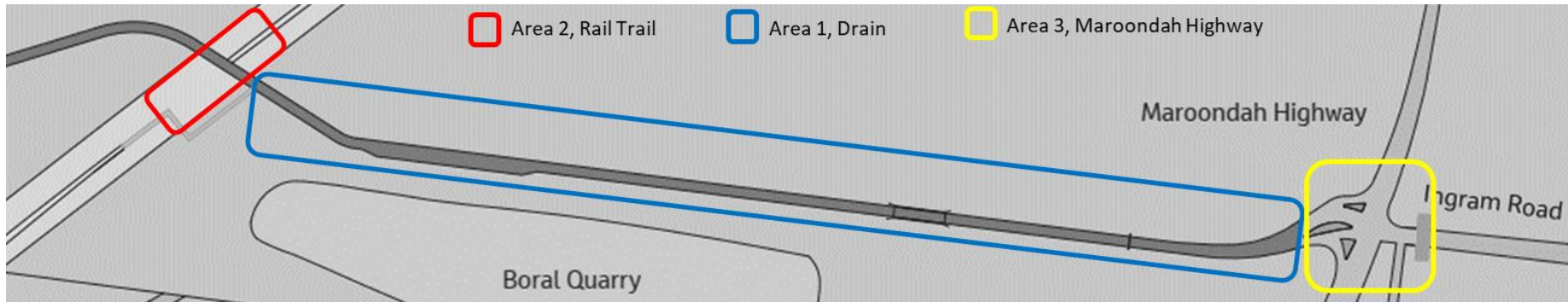
Table 1 Tree Impacts

Area	IDNumber	Genus	Species	Botanical Name	Origin	Height (m)	DBH (cm)	Health	Structure	Visual Amenity Value	Retention Value	Encroachment	Remove / Retain	Permit required (Yes/No)				Permit required
														ES01	SLO2	S1.03	S2.17	
Drain (Area 1)	4	Eucalyptus	viminialis	Eucalyptus viminialis	Planted Victorian	22	100 30 55	2. Good	1. Good	1. High	1. Very High	Minor	Retain	No (planted)	No (planted)	NA	No (planted)	No
Drain (Area 1)	8	Eucalyptus	botryoides	Eucalyptus botryoides	Planted Victorian	18	90	3. Fair	1. Good	1. High	1. Very High	Minor	Retain	No (planted)	No (planted)	NA	No (planted)	No
Drain (Area 1)	15	Acacia	sp.	Acacia sp.	Indigenous	4	40	6. Dead	3. Poor	4. Low	4. Low	Major/Within	Remove	Yes	No (dead)	NA	Yes	Yes
Drain (Area 1)	16	Acacia	melanoxylon	Acacia melanoxylon	Indigenous	5	14	2. Good	3. Poor	4. Low	4. Low	Major/Within	Remove	Yes	Yes	NA	Yes	Yes
Drain (Area 1)	17	Acacia	sp.	Acacia sp.	Indigenous	8	50	6. Dead	3. Poor	4. Low	4. Low	Major/Within	Remove	Yes	No (dead)	NA	Yes	Yes
Drain (Area 1)	22	Eucalyptus	ovata	Eucalyptus ovata	Indigenous	6	40	2. Good	2. Fair	3. Moderate	3. Moderate	Major/Within	Remove	Yes	Yes	NA	Yes	Yes
Drain (Area 1)	23	Eucalyptus	sp.	Eucalyptus sp.	Indigenous	7	35	6. Dead	3. Poor	4. Low	4. Low	Major/Within	Remove	Yes	No (dead)	NA	Yes	Yes
Drain (Area 1)	28	Quercus	palustris	Quercus palustris	Exotic	20	80	2. Good	1. Good	2. Significant	1. Very High	Minor	Retain	No (exotic)	Yes	NA	No (exotic)	Yes
Highway	36	Acacia	sp.	Acacia sp.	Indigenous	5	36	6. Dead	3. Poor	4. Low	1. Very High	Major/Within	Remove	No (exempt)	No (dead)	NA	Yes (patch)	Yes
Highway	37	Eucalyptus	nicholii	Eucalyptus nicholii	Australian	12	75 70	3. Fair	3. Poor	2. Significant	1. Very High	Major/Within	Remove	Yes	Yes	NA	No (non-native)	Yes
Highway	38	Pinus	radiata	Pinus radiata	Environmental Weed	3	15	2. Good	2. Fair	4. Low	1. Very High	Major/Within	Remove	No	No	NA	No (weed)	No
Highway	39	Acacia	sp.	Acacia sp.	Indigenous	3	22	6. Dead	3. Poor	4. Low	1. Very High	Major/Within	Remove	No (exempt)	No (dead)	NA	Yes (patch)	Yes
Highway	40	Melaleuca	styphelioides	Melaleuca styphelioides	Australian	4	26	2. Good	1. Good	3. Moderate	1. Very High	Major/Within	Remove	Yes	No	NA	No (non-native)	Yes
Highway	41	Acacia	longifolia	Acacia longifolia	Environmental Weed	3	4 4 2 2 3	2. Good	2. Fair	4. Low	1. Very High	Major/Within	Remove	No	No	NA	No (weed)	No
Highway	42	Acacia	longifolia	Acacia longifolia	Environmental Weed	2	2 2 3 2	2. Good	3. Poor	4. Low	1. Very High	Major/Within	Remove	No	No	NA	No (weed)	No
Highway	43	Acacia	saligna	Acacia saligna	Environmental Weed	7	26 22	2. Good	3. Poor	3. Moderate	1. Very High	Major/Within	Remove	No	No	NA	No (weed)	No
Highway	44	Acacia	saligna	Acacia saligna	Environmental Weed	7	50	3. Fair	3. Poor	3. Moderate	1. Very High	Major/Within	Remove	No	No	NA	No (weed)	No
Highway	45	Acacia	dealbata	Acacia dealbata	Indigenous	3	6	2. Good	1. Good	4. Low	1. Very High	Major/Within	Remove	Yes	Yes	NA	Yes	Yes
Highway	46	Acacia	dealbata	Acacia dealbata	Indigenous	3	6	2. Good	1. Good	4. Low	1. Very High	Major/Within	Remove	Yes	Yes	NA	Yes	Yes
Highway	47	Acacia	dealbata	Acacia dealbata	Indigenous	2	2	2. Good	1. Good	4. Low	1. Very High	Major/Within	Remove	Yes	Yes	NA	Yes	Yes
Highway	48	Acacia	dealbata	Acacia dealbata	Indigenous	3	6	2. Good	2. Fair	4. Low	1. Very High	Major/Within	Remove	No	Yes	NA	Yes	Yes
Highway	49	Acacia	dealbata	Acacia dealbata	Indigenous	4	10 6	2. Good	3. Poor	4. Low	1. Very High	Major/Within	Remove	Yes	Yes	NA	Yes	Yes
Highway	50	Acacia	dealbata	Acacia dealbata	Indigenous	4	6	2. Good	3. Poor	4. Low	1. Very High	Major/Within	Remove	Yes	Yes	NA	Yes	Yes
Highway	51	Acacia	dealbata	Acacia dealbata	Indigenous	5	14 5 11	3. Fair	3. Poor	4. Low	1. Very High	Major/Within	Remove	Yes	Yes	NA	Yes	Yes
Highway	52	Acacia	saligna	Acacia saligna	Environmental Weed	2	5	2. Good	3. Poor	4. Low	1. Very High	Major/Within	Remove	No	No	NA	No (weed)	No
Highway	53	Melaleuca	styphelioides	Melaleuca styphelioides	Australian	5	26 28	2. Good	3. Poor	4. Low	1. Very High	Major/Within	Remove	Yes	No	NA	No (non-native)	Yes
Highway	54	Acacia	saligna	Acacia saligna	Environmental Weed	8	28 30 60	4. Poor	3. Poor	3. Moderate	1. Very High	Major/Within	Remove	No	No	NA	No (weed)	No
Highway	55	Acacia	longifolia	Acacia longifolia	Environmental Weed	1	1 1 1 1	2. Good	1. Good	4. Low	1. Very High	Major/Within	Remove	No	No	NA	No (weed)	No
Highway	56	Acacia	longifolia	Acacia longifolia	Environmental Weed	2	2 2 1 1	2. Good	2. Fair	4. Low	1. Very High	Major/Within	Remove	No	No	NA	No (weed)	No
Highway	57	Allocasuarina	littoralis	Allocasuarina littoralis	Indigenous	3	4 3 3 2 2	2. Good	3. Poor	4. Low	1. Very High	Major/Within	Remove	Yes	Yes	NA	Yes	Yes
Highway	58	Allocasuarina	littoralis	Allocasuarina littoralis	Indigenous	6	12 10 5 15 18 15 10 12	2. Good	3. Poor	3. Moderate	1. Very High	Major/Within	Remove	Yes	Yes	NA	Yes	Yes
Highway	59	Acacia	longifolia	Acacia longifolia	Environmental Weed	4	8 8	3. Fair	3. Poor	4. Low	1. Very High	Major/Within	Remove	No	No	NA	No (weed)	No
Highway	60	Acacia	longifolia	Acacia longifolia	Environmental Weed	1	1 1 2 1 2 1	2. Good	1. Good	4. Low	1. Very High	Major/Within	Remove	No	No (weed)	NA	No (weed)	No
Highway	61	Acacia	longifolia	Acacia longifolia	Environmental Weed	3	6	3. Fair	2. Fair	4. Low	1. Very High	Major/Within	Remove	No	No (weed)	NA	No (weed)	No
Highway	62	Acacia	longifolia	Acacia longifolia	Environmental Weed	4	10 6	4. Poor	2. Fair	4. Low	1. Very High	Major/Within	Remove	No	No	NA	No (weed)	No
Highway	63	Acacia	longifolia	Acacia longifolia	Environmental Weed	4	5 4 8 6 10	4. Poor	3. Poor	4. Low	1. Very High	Major/Within	Remove	No	No	NA	No (weed)	No
Highway	64	Acacia	longifolia	Acacia longifolia	Environmental Weed	5	5 4 4 8 8 6	3. Fair	3. Poor	4. Low	1. Very High	Major/Within	Remove	No	No	NA	No (weed)	No
Highway	65	Allocasuarina	littoralis	Allocasuarina littoralis	Indigenous	3	5	3. Fair	3. Poor	4. Low	1. Very High	Major/Within	Remove	Yes	Yes	NA	Yes	Yes
Highway	66	Acacia	saligna	Acacia saligna	Environmental Weed	7	10 6 14 16	3. Fair	2. Fair	3. Moderate	1. Very High	Major/Within	Remove	No	No	NA	No (weed)	No
Highway	98	Eucalyptus	sp.	Eucalyptus sp.	Indigenous	7	25	Dead	Poor	Low	Low	Major/Within	Remove	No (exempt)	No (dead)	NA	Yes (patch)	Yes
Highway	99	Eucalyptus	sp.	Eucalyptus sp.	Indigenous	7	9	Dead	Poor	Low	Low	Major/Within	Remove	No (exempt)	No (dead)	NA	Yes (patch)	Yes
Highway	100	Prunus	domestica	Prunus domestica	Environmental Weed	6	14 12 10	Good	Good	Low	Low	Major/Within	Remove	No	No	NA	No (weed)	No
Highway	104	Eucalyptus	yarraensis	Eucalyptus yarraensis	Indigenous	17	91	Good	Good	High	High	Minor (less than	Retain	Yes	No	NA	Yes	Yes
Rail Trail (Area 2)	48	Acacia	melanoxylon	Acacia melanoxylon	Indigenous	6	18	2. Good	1. Good	4. Low	4. Low	Major/Within	Remove	NA	Yes	NA	Yes	Yes
Rail Trail (Area 2)	60	Acacia	melanoxylon	Acacia melanoxylon	Indigenous	3		12 Fair	Poor	Low	Low	Major/Within	Remove	NA	Yes	NA	Yes	Yes
Rail Trail (Area 2)	61	Acacia	melanoxylon	Acacia melanoxylon	Indigenous	3		16 Dead	Fair	Low	Low	Major/Within	Remove	NA	No (dead)	NA	Yes	Yes

ADVERTISED PLAN

This copied document to be made available for the sole purpose of enabling its consideration and review as part of a planning process under the Planning and Environment Act 1987. The document must not be used for any purpose which may breach any copyright

Figure 1 Location of Trees Impacted



Note: The tree numbers in Area 2 Rail Trail and Maroondah Highway have been duplicated (i.e. Tree No.s 48, 60 and 61 appear in both). The record of each tree in the spreadsheet is identifiable by the location name and then the tree number

ADVERTISED PLAN