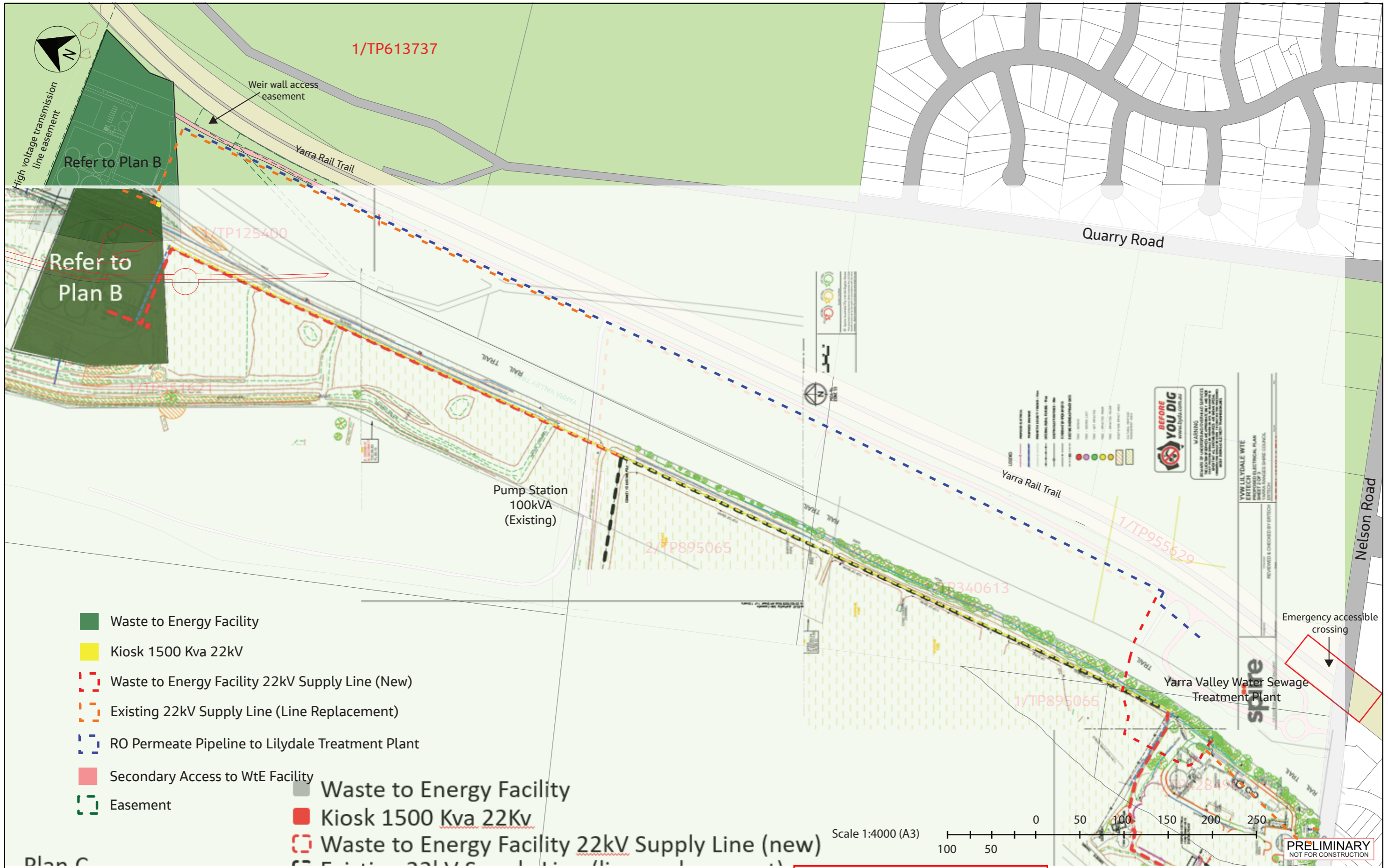


© Jacobs Group (Australia) Pty Ltd ABN 37 001 024 095. No part of this document or the information it contains may be reproduced or transmitted in any form or by any means electronic or mechanical, including photocopying, recording, or by any information storage and retrieval system, without permission in writing from Jacobs Group (Australia) Pty Ltd.



ADVERTISED PLAN

This copied document to be made available for the sole purpose of enabling its consideration and review as part of a planning process under the Planning and Environment Act 1987. The document must not be used for any purpose which may breach any copyright

Development Plan
Lilydale Waste to Energy Facility Plan C

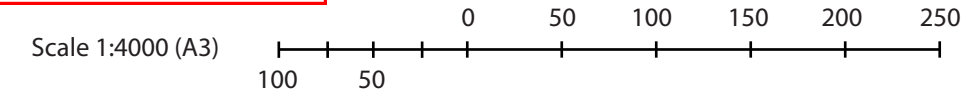


ADVERTISED PLAN



- Waste to Energy Facility
- Access
- Intersection Modifications
- Yarra Valley Rail Trail Modifications
- Transmission Infrastructure
- Culvert Replacement
- Easements

This copied document to be made available
 for the sole purpose of enabling
 its consideration and review as
 part of a planning process under the
 Planning and Environment Act 1987.
 The document must not be used for any
 purpose which may breach any
 copyright



PRELIMINARY
 NOT FOR CONSTRUCTION

© Jacobs Group (Australia) Pty Ltd ABN 37 001 024 095. No part of this document or the information it contains may be reproduced or transmitted in any form or by any means electronic or mechanical, including photocopying, recording, or by any information storage and retrieval system, without permission in writing from Jacobs Group (Australia) Pty Ltd.



ADVERTISED PLAN

1/TP125400

Refer to Plan A

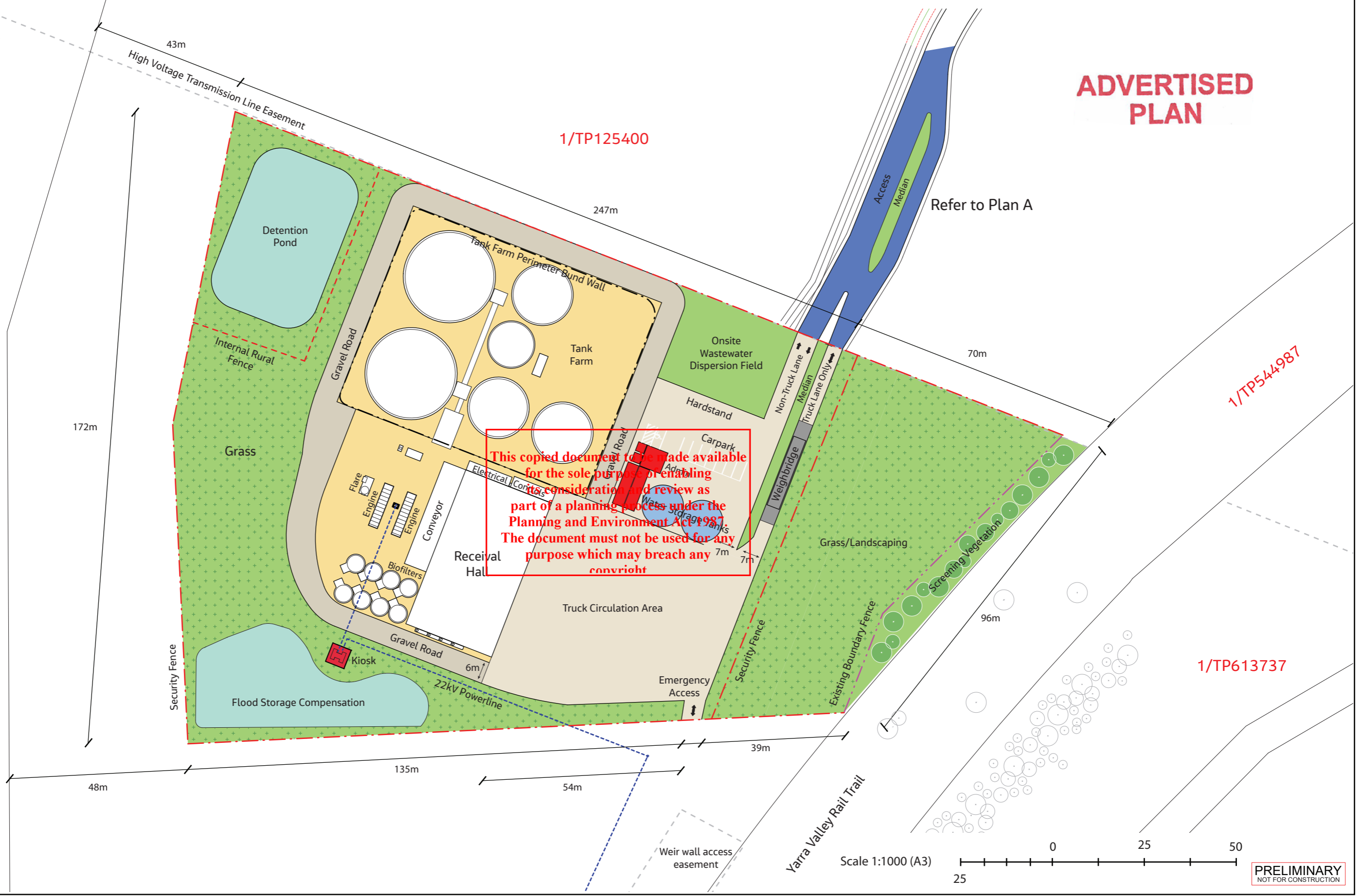
1/TP544987

1/TP613737

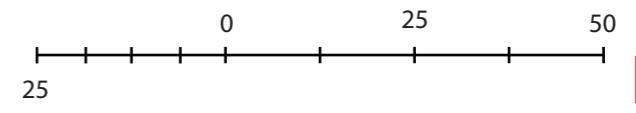
1/TP551621

© Jacobs Group (Australia) Pty Ltd ABN 37 001 024 095. No part of this document or the information it contains may be reproduced or transmitted in any form or by any means electronic or mechanical, including photocopying, recording, or by any information storage and retrieval system, without permission in writing from Jacobs Group (Australia) Pty Ltd.

This copied document is made available for the sole purpose of enabling its consideration and review as part of a planning process under the Planning and Environment Act 1987. The document must not be used for any purpose which may breach any copyright.



Scale 1:1000 (A3)

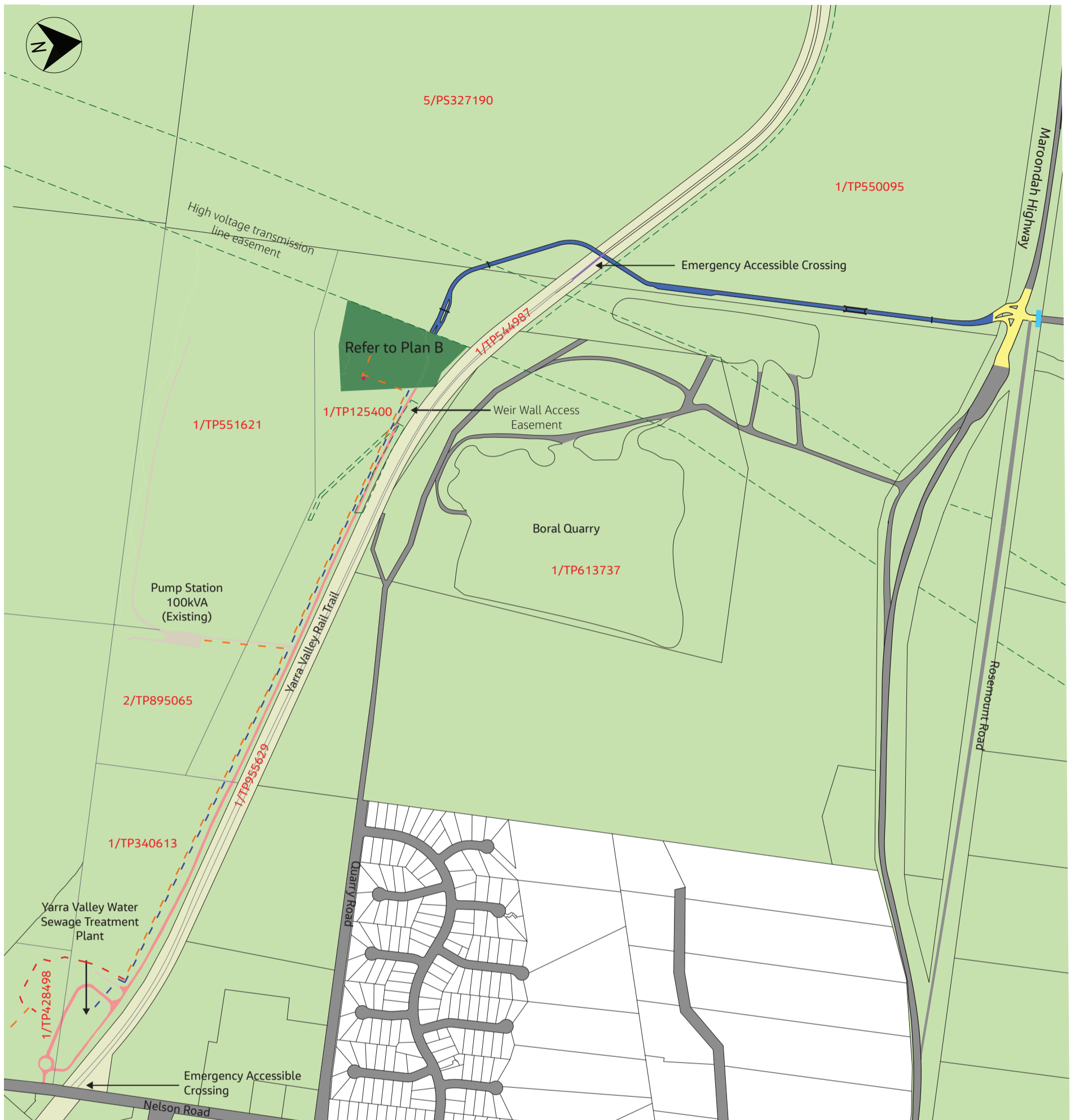


PRELIMINARY
NOT FOR CONSTRUCTION



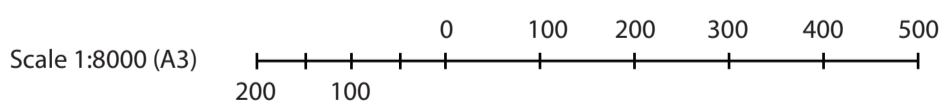
Development Plan
Lilydale Waste to Energy Facility Plan B

© Jacobs Group (Australia) Pty Ltd ABN 37 001 024 095. No part of this document or the information it contains may be reproduced or transmitted in any form or by any means electronic or mechanical, including photocopying, recording, or by any information storage and retrieval system, without permission in writing from Jacobs Group (Australia) Pty Ltd.



- | | |
|---------------------------------------|--|
| Culvert Replacement | Kiosk 1500 Kva 22kV |
| Access | Waste to Energy Facility 22kV Supply Line (New) |
| Intersection Modifications | Existing 22kV Supply Line (Line Replacement) |
| Yarra Valley Rail Trail Modifications | RO Permeate Pipeline to Lilydale Treatment Plant |
| Waste to Energy Facility | Secondary Access to WtE Facility |
| Easement | |

ADVERTISED PLAN



This copied document to be made available for the sole purpose of enabling its consideration and review as part of a planning process under the Planning and Environment Act 1987. The document must not be used for any purpose which may breach any copyright

PRELIMINARY
NOT FOR CONSTRUCTION

