

# KARDINIA INTERNATIONAL SCHOOL - JUNIOR SCHOOL SCHEMATIC PLAN 1:300 (A1) 29/11/20

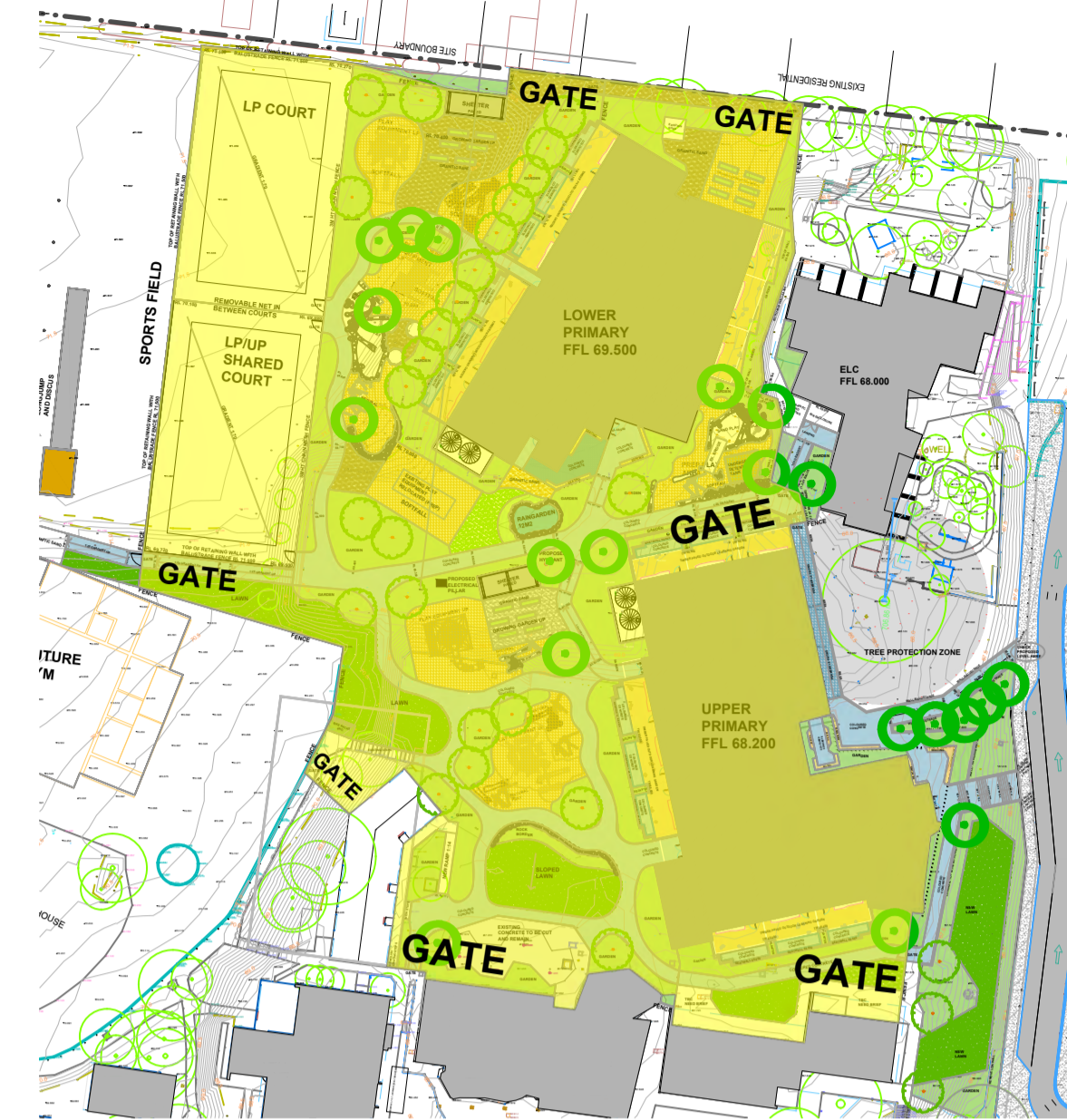


This copied document to be made available for the sole purpose of enabling its consideration and review as part of a planning process under the Planning and Environment Act 1987. The document must not be used for any purpose which may breach any copyright

## ADVERTISED PLAN

### NOTE ON COST ALLOWANCES

- The Cost Plan will need to allow for:
- 1 Relocation of existing memorials and existing inscribed brick pavers. (Qty. to be defined by KIC)
  - 2 Shade Sails in locations to be determined.
  - 3 Removable Net in between courts similar to product currently used at KIC.



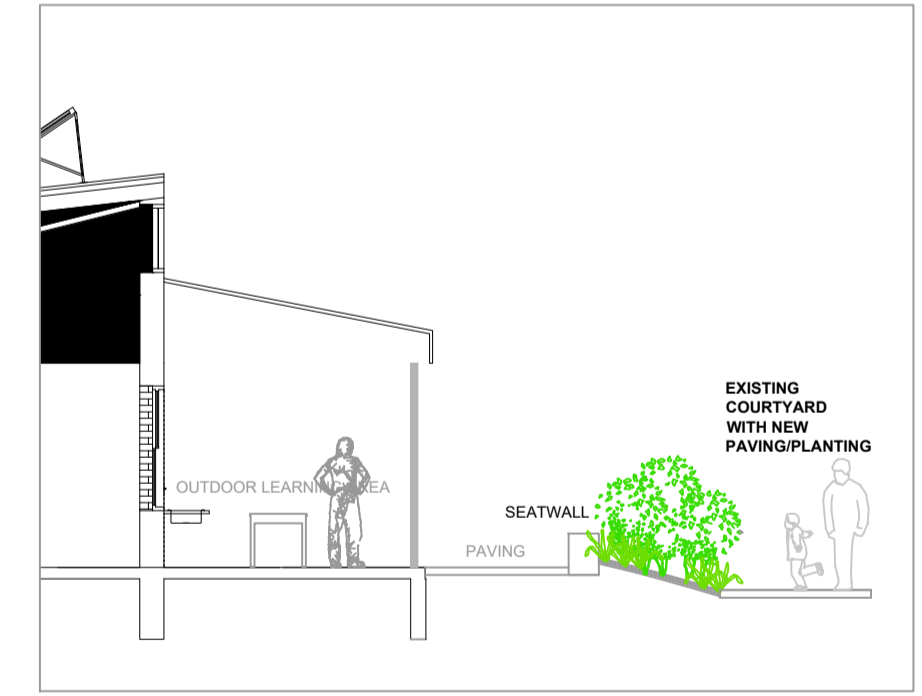
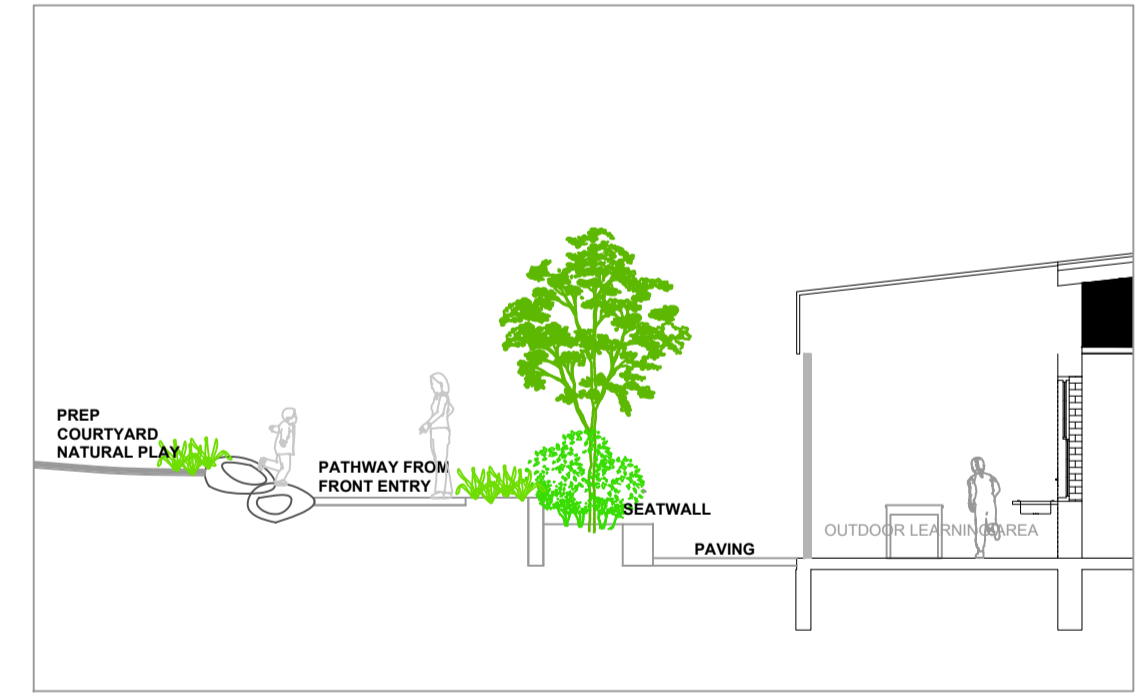
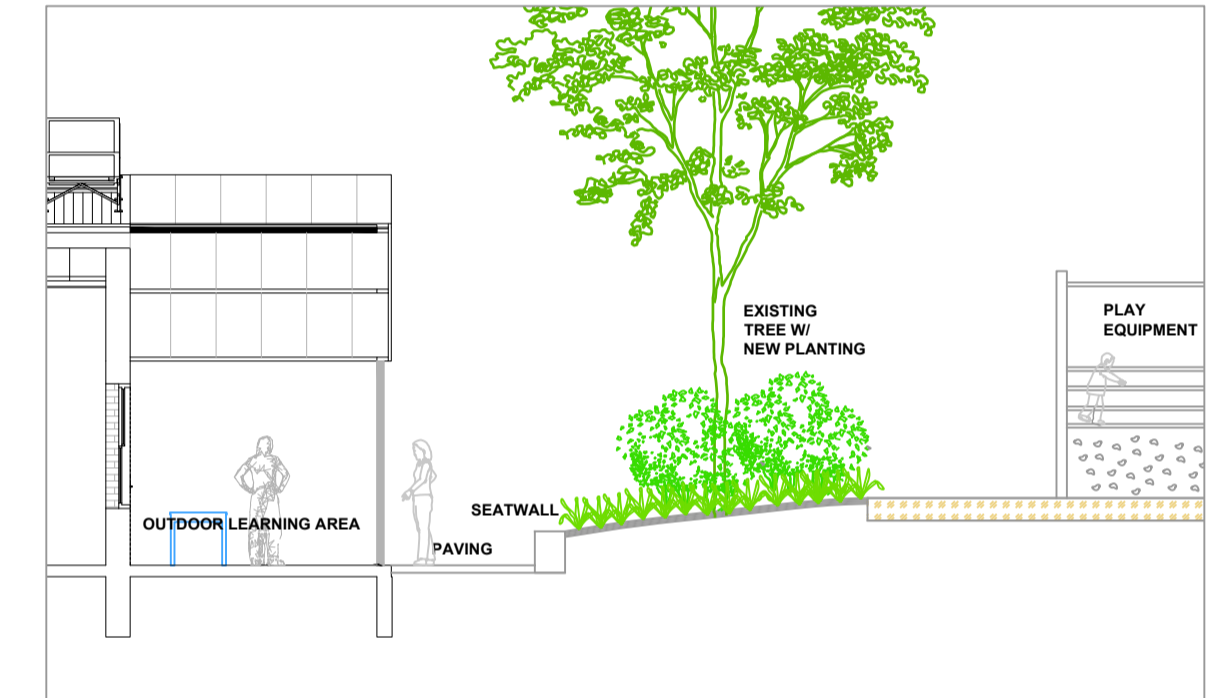
FENCE ENCLOSURE EXTENT TO KIC JUNIOR SCHOOL 1:1000



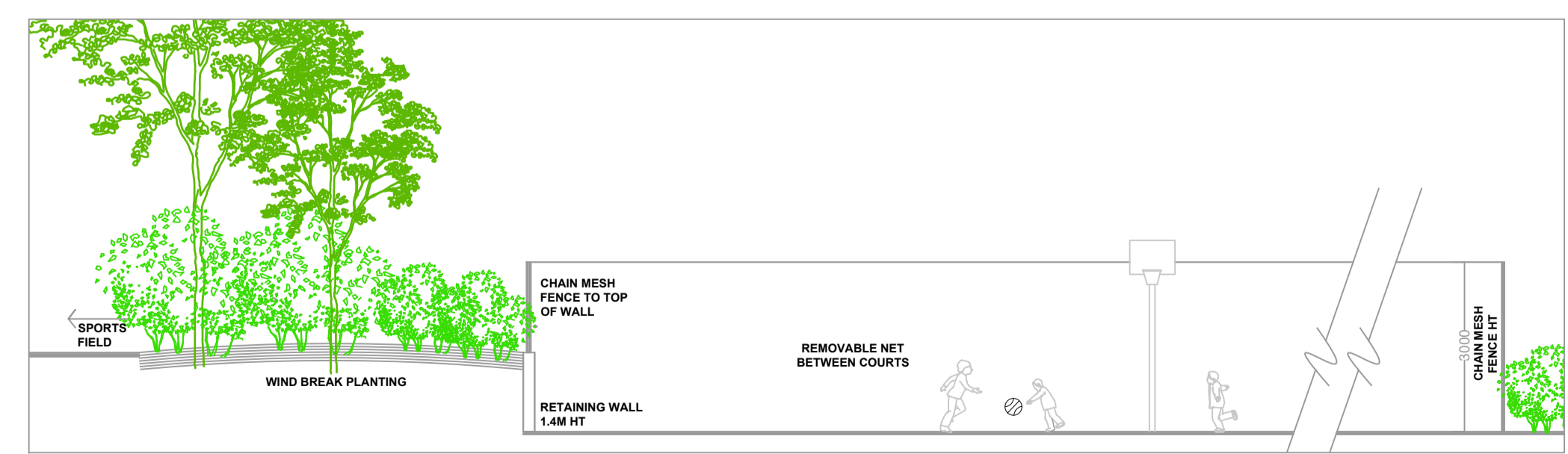
REFERENCE IMAGERY  
NOTE: ITEMS TO BE CONFIRMED AS BUDGET ALLOWS



LOWER PRIMARY OUTDOOR LEARNING SPACES 1:100



UPPER PRIMARY OUTDOOR LEARNING SPACES 1:100



BALL COURTS WITH WINDBREAK PLANTING 1:100

**KIC - TREE REMOVAL PLAN - EXISTING CONDITIONS 1:300 (A1) 04/12/20**



**TREES TO BE REMOVED (TREES RECOMMENDED TO BE REMOVED AS THEY WILL BE IMPACTED BY DEVELOPMENT)**

FOR FURTHER INFORMATION REGARDING THESE TREES - REFERENCE ARBORIST REPORT FROM LTAT CONSULTING DATED JANUARY 2021

- |    |  |    |  |
|----|--|----|--|
| 1  | <i>Paulownia tomentosa</i> - Paulownia                               | 35 | <i>Malus ioensis</i> - Ornamental pear               |
| 2  | <i>Acer negundo</i> - Elder  | 36 | <i>Malus ioensis</i> - Ornamental pear               |
| 3  | <i>Malus ioensis</i> - Ornamental pear                               | 37 | <i>Malus ioensis</i> - Ornamental pear               |
| 4  | <i>Prunus cerasifera</i> - Flowering Plum                            | 38 | <i>Malus ioensis</i> - Ornamental pear               |
| 5  | <i>Olea europaea</i> - Black Olive                                   | 39 | <i>Malus ioensis</i> - Ornamental pear               |
| 6  | <i>Olea europaea</i> - Black Olive                                   | 40 | <i>Malus ioensis</i> - Ornamental pear               |
| 7  | <i>Olea europaea</i> - Black Olive                                   | 41 | <i>Betula pendula</i> - Silver Birch                 |
| 8  | <i>Olea europaea</i> - Black Olive                                   | 42 | <i>Eucalyptus gomphocephala</i> - Tuart Gum          |
| 9  | <i>Prunus cerasifera</i> - Flowering Plum                            | 43 | <i>Corymbia maculata</i> - Spotted Gum               |
| 10 | <i>Prunus cerasifera</i> - Flowering Plum                            | 44 | <i>Corymbia maculata</i> - Spotted Gum               |
| 11 | <i>Malus ioensis</i> - Ornamental pear                               | 45 | <i>Corymbia maculata</i> - Spotted Gum               |
| 12 | <i>Malus ioensis</i> - Ornamental pear                               | 46 | <i>Corymbia maculata</i> - Spotted Gum               |
| 13 | <i>Platanus orientalis</i> - Plane Tree                              | 47 | <i>Corymbia maculata</i> - Spotted Gum               |
| 14 | <i>Eucalyptus camaldulensis</i> - Red Gum TO REMAIN AND BE PROTECTED | 48 | <i>Prunus cerasifera</i> - Flowering Plum            |
| 15 | <i>Melaleuca styphelioides</i> - Prickly Paper Bark                  | 49 | <i>Callistemon viminalis</i> - Bottlebrush TO REMAIN |
| 16 | <i>Syzygium smithii</i> - Lilly Pilly                                | 50 | <i>Callistemon viminalis</i> - Bottlebrush TO REMAIN |
| 17 | <i>Melaleuca lanceolata</i> - Moonah                                 | 51 | <i>Eucalyptus sideroxylon</i> - Iron Bark TO REMAIN  |
| 18 | <i>Metrosideros excelsior</i> - NZ Christmas Tree                    | 52 | <i>Lagunaria pattersoni</i> - Itchy Tree             |
| 19 | <i>Metrosideros excelsior</i> - NZ Christmas Tree                    | 53 | <i>Eucalyptus cladocalyx</i> - Sugar Gum TO REMAIN   |
| 20 | <i>Metrosideros excelsior</i> - NZ Christmas Tree                    | 54 | <i>Eucalyptus gomphocephala</i> - Tuart Gum          |
| 21 | <i>Acer negundo variegatum</i> - Variegated Elder                    | 55 | <i>Eucalyptus gomphocephala</i> - Tuart Gum          |
| 22 | <i>Acer negundo</i> - Elder  | 56 | <i>Eucalyptus gomphocephala</i> - Tuart Gum          |
| 23 | <i>Acer negundo</i> - Elder  | 57 | <i>Eucalyptus gomphocephala</i> - Tuart Gum          |
| 24 | <i>Betula pendula</i> - Silver Birch                                 | 58 | <i>Eucalyptus gomphocephala</i> - Tuart Gum          |
| 25 | <i>Betula pendula</i> - Silver Birch                                 | 59 | <i>Eucalyptus gomphocephala</i> - Tuart Gum          |
| 26 | <i>Acer negundo</i> - Elder  | 60 | <i>Eucalyptus gomphocephala</i> - Tuart Gum          |
| 27 | <i>Acer negundo variegatum</i> - Variegated Elder                    | 61 | <i>Eucalyptus gomphocephala</i> - Tuart Gum          |
| 28 | <i>Acer negundo variegatum</i> - Variegated Elder                    | 62 | <i>Eucalyptus gomphocephala</i> - Tuart Gum          |
| 29 | <i>Acer negundo variegatum</i> - Variegated Elder                    | 63 | <i>Eucalyptus gomphocephala</i> - Tuart Gum          |
| 30 | <i>Acer negundo variegatum</i> - Variegated Elder                    | 64 | <i>Eucalyptus gomphocephala</i> - Tuart Gum          |
| 31 | <i>Acer negundo variegatum</i> - Variegated Elder                    | 65 | <i>Pittosporum James Stirling</i> TO REMAIN          |
| 32 | <i>Malus ioensis</i> - Ornamental pear                               | 66 | <i>Pittosporum James Stirling</i> TO REMAIN          |
| 33 | <i>Malus ioensis</i> - Ornamental pear                               | 67 | <i>Gleditsia triacanthos</i> - Golden Rain TO REMAIN |
| 34 | <i>Malus ioensis</i> - Ornamental pear                               | 68 | <i>Malus ioensis</i> - Ornamental pear TO REMAIN     |
|    |  | 69 | <i>Fraxinus raywoodii</i> - Desert Ash TO REMAIN     |



This copied document to be made available for the sole purpose of enabling its consideration and review as part of a planning process under the Planning and Environment Act 1987. The document must not be used for any purpose which may breach any copyright

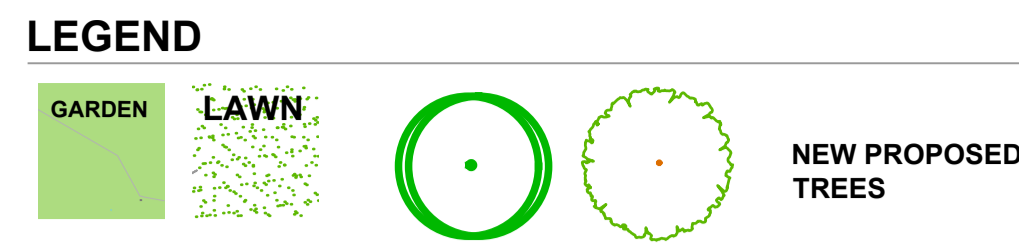
**ADVERTISED PLAN**

**KIC - JUNIOR SCHOOL TREE REMOVAL PLAN PROPOSED PLAN 1:500 (A1)**



**LEGEND**

-  TREE TO REMOVE
-  TREE TO REMAIN

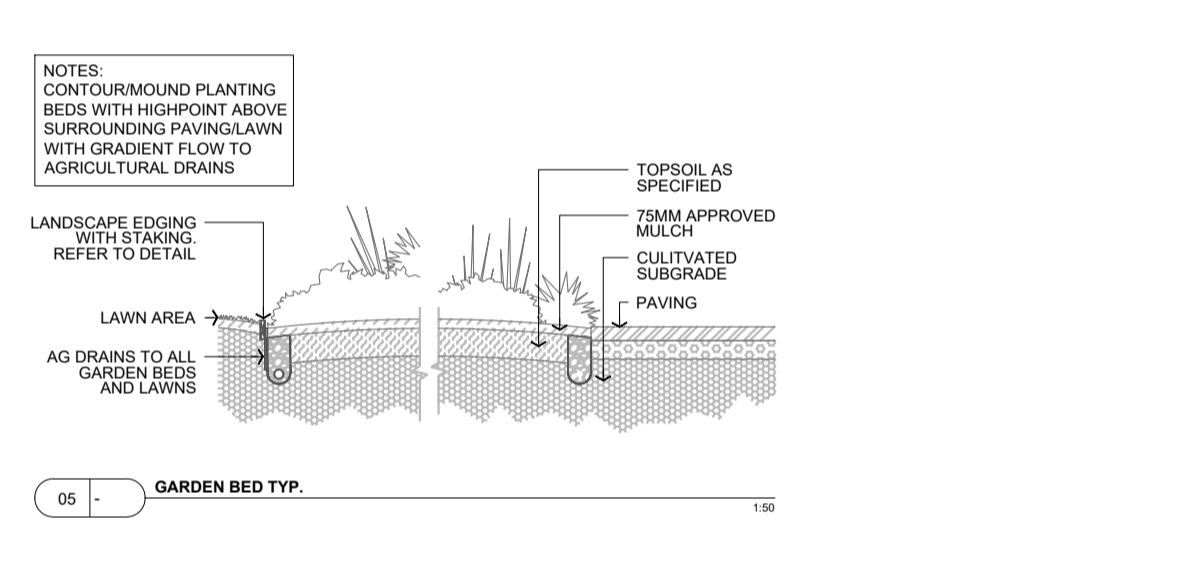
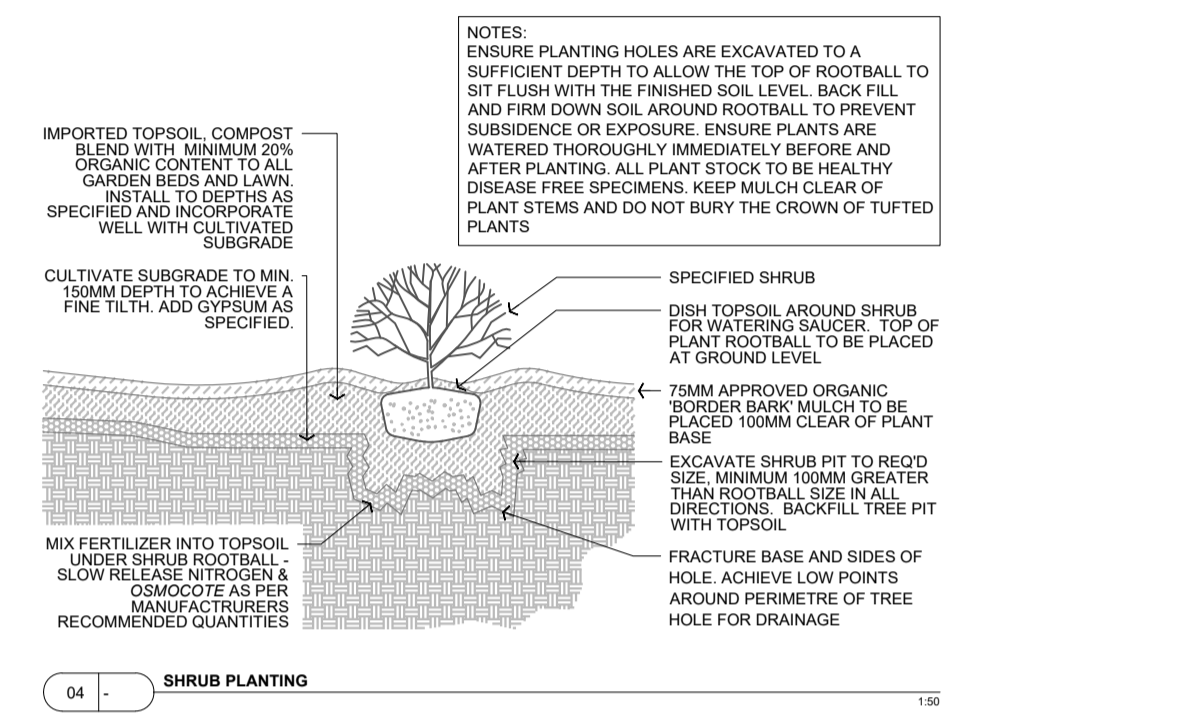
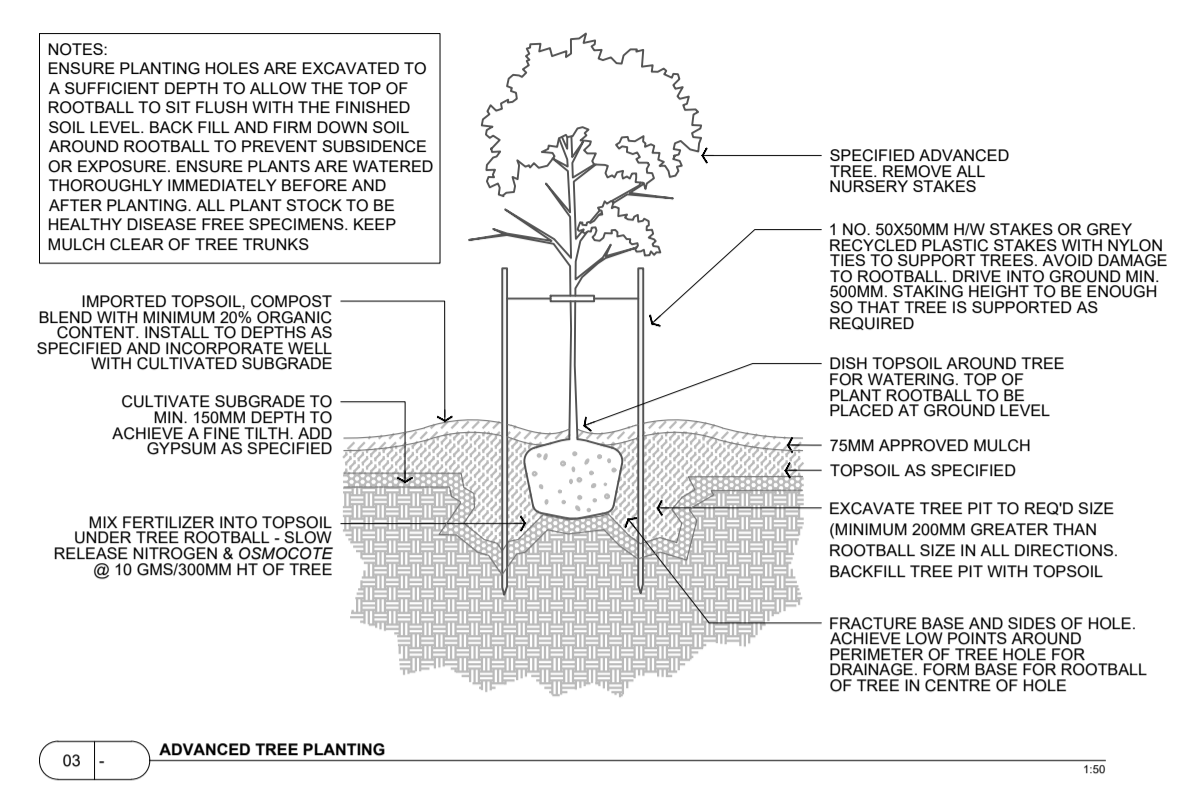


**Tree List - Qty's of each species to be confirmed. Approx. 48 Advanced trees to be planted**

Key	Plant Names	Install Size - These are the minimum sizes to be supplied.	Notes
Cc	Corymbia citriodora 'Scentuous'	50lt 2.0m ht, 25mm caliper	All trees must be of consistent form, colour and height. Mature heights and widths
Cp	Cercis canadensis 'Forest Pansy'	50lt 2.0m ht, 25mm caliper	4m height x 3m width
Cf	Corymbia ficifolia 'Summer Beauty'	50lt 2.0m ht, 25mm caliper	6m height x 3m width
Els	Eucalyptus leucocylon megalocarpa 'Rosea'	50lt 2.0m ht, 25mm caliper	8m height x 6m width
Els	Eucalyptus mannifera 'Little Spotty'	50lt 2.0m ht, 25mm caliper	7m height x 5m width
Els	Eucalyptus scoparia	50lt 2.0m ht, 25mm caliper	8m height x 5m width
Els	Eucalyptus sideroxylon 'Rosea'	50lt 2.0m ht, 25mm caliper	14m height x 6m width
Hf	Hymenosporum flavum	50lt 3.2m ht, 50mm caliper	8m height x 5m width
Lit	Lagerstromia indica x lauriei 'TUSCARORA'	50lt 2.5m ht, 25mm caliper	4m height x 3m width
Els	Magnolia grandifolia 'Kay Paris'	50lt 2.0m ht, 25mm caliper	4m height x 3m width
Pc	Pyrus Calleryana 'Chanticleer'	50lt 2.5m ht, 25mm caliper	8m height x 5m width
Els	Tristanopsis laurina 'Luscious'	50lt 2.0m ht, 25mm caliper	8m height x 4m width

**Shrub/Groundcover Species List - Draft species list - Qty's of each species to be confirmed. Shrubs to be planted at 1/m2. Groundcovers to be planted 3/m3**

Key	Plant Names	Install Size	Approx Mature Size
Aca	Anthropodium cirratum matapouri bay	150mm	6m height x .8m width
Af	Acacia 'Winter Flame'	200mm	1m height x 1m width
Ac	Acacia cognata 'Dazzler'	200mm	1m height x 1m width
Ct	Chiosya ternata	200mm	1.5m height x 1m width
Ca	Correa alba	150mm	1m height x 1m width
Ci	Correa 'Ivory Lantern'	200mm	.8m height x .8m width
Cd	Correa 'Dusky Bells'	200mm	1.2m height x 1m width
Cg	Correa glabra	200mm	1m height x 1m width
Di	Dietersa indidoides	200mm	.6m height x .6m width
Db	Dianella caerulea 'Breeze'	200mm	.6m height x .6m width
Dtb	Dianella tasmanica 'Blaze'	200mm	.6m height x .6m width
Dtd	Dietersa grandiflora 'Tiny Dancer'	140mm	.8m height x .8m width
Dj	Dianella caerulea 'Little Jess'	140mm	.6m height x .8m width
Lp	Lomandra 'Little Pal'	140mm	.5m height x .5m width
Lt	Lomandra tanika	140mm	.8m height x .8m width
Lm	Liriope muscari 'Just right'	140mm	.5m height x .5m width
Mp	Myoporum parvifolium	140mm	.3m height x .8m width
Or	Olearia ramulosa	140mm	.6m height x .6m width
Pa	Plectranthus argentatus	140mm	1.5m height x 1.2m width
Pi	Prostanthera lasianthos	140mm	1m height x 1m width
Wb	Westringia 'Grey Box'	200mm	.6m height x .6m width
Lp	Limonium perzi	200mm	.5m height x .5m width
Sb	Stachys byzantina	200mm	.4m height x .4m width
Tj	Trachelospermum jasminoides	200mm	.6m height x .6m width
Wf	Westringia fruticosa	200mm	1m height x 1m width
Wm	Westringia fruticosa 'Mundi'	140mm	.3m height x .8m width



**LANDSCAPE NOTES**

**GARDEN PREP**  
THE SURFACE OF THE LANDSCAPE GARDEN AREAS MUST BE CULTIVATED PRIOR TO INSTALLATION OF TOPSOIL AND PLANTS (WITH POSSIBLE EXCEPTION OF UNDER EXISTING TREES). ALL CULTIVATION UNDER TREES TO BE APPROVED BY ARBORIST). USE A MECHANICAL RIPPER OR HAND CULTIVATION TO CULTIVATE ALL PLANTING AREA SUBGRADES TO A DEPTH OF 250MM. RIPLINES SPACED AT 200MM. RAKE IN GYPSUM INTO SUBGRADE AFTER RIPPER TO RATE OF 1 KILOGRAM A M2 PRIOR TO INSTALLING TOPSOIL.

**LANDSCAPE GARDEN EDGING**  
ALL GARDEN BEDS TO HAVE TIMBER EDGING WHEN NOT ADJACENT TO PAVING. REFER TO LANDSCAPE EDGING DETAILS AND SPECIFICATIONS.

**LANDSCAPE MAINTENANCE PERIOD**  
THE CONTRACTOR IS RESPONSIBLE FOR THE MAINTENANCE OF ALL PLANTING AND LAWN AREAS FOR A PERIOD OF 13 WEEKS. THIS MAINTENANCE INCLUDES WATERING FOR PROPER ESTABLISHMENT OF NEW PLANTING. ANY PLANT MATERIAL THAT IS DEEMED UNHEALTHY OR DEAD BY THE LANDSCAPE ARCHITECT, IS TO BE IMMEDIATELY REPLACED. IF REQUIRED OR INSTRUCTED, RE-MULCH, REMOVE WEEDS, RE-STAKE TREES, FIX TEMPORARY FENCING, AND GENERAL TIDYING UP OF ALL LANDSCAPE INSTALLATIONS IS TO BE UNDERTAKEN TO THE SATISFACTION OF THE SUPERINTENDENT AND LANDSCAPE ARCHITECT. MAINTENANCE PERIOD TO BEGIN AFTER LANDSCAPE IS INSPECTED AND APPROVED.

**TOPSOIL, SOIL TESTS, AND MULCH**  
**SOIL TESTS**  
A SOIL TEST IS REQUIRED FOR ALL PROPOSED TOPSOILS FOR APPROVAL OF SOILS PRIOR TO INSTALLATION. **ISSUE SOIL TESTS FOR ALL PROPOSED AND SPECIFIED SOILS PRIOR TO DELIVERY AND INSTALLATIONS.**  
**SOILS TO BE SUPPLIED BY APPROVED SUPPLIER ONLY.**  
ANY ADDITIVES REQUIRED TO SPECIFIED SOILS TO ENSURE THAT THEY ARE COMPLIANT WITH SOIL TEST RECOMMENDATIONS, AND/OR ENSURE SOILS ARE FIT FOR PURPOSE, AND TO REACH AS 2223 DEFINITION, ARE TO BE SUPPLIED AND MIXED, WITH COSTS COVERED BY THE CONTRACTOR.

**AG DRAINAGE**  
THE NEW WORKS ARE BEING DRAINED BY SURFACE DRAINAGE AND A SUB-SURFACE DRAINAGE SYSTEM OF AG DRAINS, CONNECTED TO THE STORMWATER PITS. ALL SAND, SOFTFALL AREAS AND ALL PLANTING AREAS TO HAVE AG DRAINS. CARE IS TO BE TAKEN TO INSTALL DRAINS AND TO PROTECT THEM DURING CONSTRUCTION SO THEY ARE NOT FOULED AND DRAIN FREELY. TEST ALL AG DRAINAGE UPON COMPLETION TO THE SATISFACTION OF THE SUPERINTENDENT. ALL AG DRAINS TO BE 100MM PERFORATED PIPE WITH SOCK COVERS AND INSTALLED IN FREE DRAINING GRAVEL TRENCHES. A MINIMUM OF 1:200 DRAINAGE GRADIENT IS TO BE PROVIDED TO ALL AG DRAINS, DRAINING TO SW PITS.

**SOIL GRADIENTS AND LEVELS**  
SUBGRADE AND SOIL GRADIENTS TO DRAIN TO AG DRAINS OR TO OUTLET POINTS. NO LOW AREAS ARE TO BE CREATED IN GARDEN BEDS THAT HAVE NO DRAINAGE. PLANTING AREAS TO SLIGHTLY MOUNDED ABOVE PAVED AREAS FOR POSITIVE DRAINAGE TOWARDS AG DRAINS.

ALL PLANTING BEDS ADJACENT TO BUILDING EDGES TO HAVE SUB-GRADIES AND FINISH GRADES THAT DRAIN AWAY FROM BUILDING WITH TOPS OF FINISH GARDEN BEDS SET A MINIMUM OF 50MM BELOW FFL.

**TREE SUPPLIERS**  
PREFERRED LIST OF TREE GROWERS, PICTURES OF ACTUAL TREES TO BE DELIVERED TO SITE MUST BE SUBMITTED FOR APPROVAL.  
ESTABLISHED TREES 5964-4240  
TALL TREES 5983 0166  
SPECIALITY TREES 9796-8308  
METROPOLITAN TREE GROWERS 9499-9913  
MT WILLIAM ADVANCED TREE NURSERY 5429-1517  
TIMBERTOP ADVANCED TREES 5968-1760  
OLINDA ADVANCED TREE NURSERY 5427-0463  
OTHER SUPPLIERS MUST BE APPROVED BY THE LANDSCAPE ARCHITECT.  
TREES FROM PLANTMARK AND PRESTIGE PLANTS (OR OTHER SUPPLIERS THAT DO NOT GROW THEIR OWN TREES) ARE NOT ACCEPTABLE. TREES TO BE SOURCED FROM DIRECT TREEGROWERS ONLY.

**PLANTING**  
ALL PLANTING IS TO BE INSTALLED DURING MAXIMUM PLANTING CONDITIONS, I.E. AUTUMN OR SPRING. PLANTING DURING HOT SUMMER MONTHS IS NOT ACCEPTABLE. PLANTING DURING TIMES OF POSSIBLE FROST ARE NOT ACCEPTABLE.

**MULCH**  
ALL GARDEN BEDS TO HAVE 75MM OF GARDEN MULCH. MEDIUM TEXTURED BARK MULCH, APPROX. 15MM - 20MM PINE BARK - SUPPLY SAMPLES FOR APPROVAL.

**IRRIGATION AND WATERING**  
INSTALL A DRIP IRRIGATION SYSTEM TO ALL GARDEN BEDS. IRRIGATION TO BE CONNECTED TO MAINS WATER. IRRIGATION CONTROLLER LOCATION AS INDICATED ON PLANS OR APPROVED LOCATION. PROVIDE ALL CERTIFICATES FOR SAFETY REQUIREMENTS TO AUSTRALIAN STANDARDS. A LICENSED PLUMBER MUST BE USED TO DESIGN AND INSTALL THE SYSTEM. ALL COMPONENTS MUST BE COMPLIANT TO STANDARDS. SUBMIT A FULL LIST OF COMPONENTS WITH MAINTENANCE MANUALS UPON COMPLETION. REFER TO SPECIFICATION FOR FULL REQUIREMENTS.

**ROOT BARRIERS**  
INSTALL ROOT BARRIERS WHERE NOTED ON PLANT SCHEDULE. SUPPLY FROM ARBOGREEN. PRODUCT # RDC900.

01 - PROPOSED AREAS FOR PLANTING AND PROPOSED TREES

This copied document to be made available for the sole purpose of enabling its consideration and review as part of a planning process under the Planning and Environment Act 1987. The document must not be used for any purpose which may breach any copyright

ADVERTISED PLAN