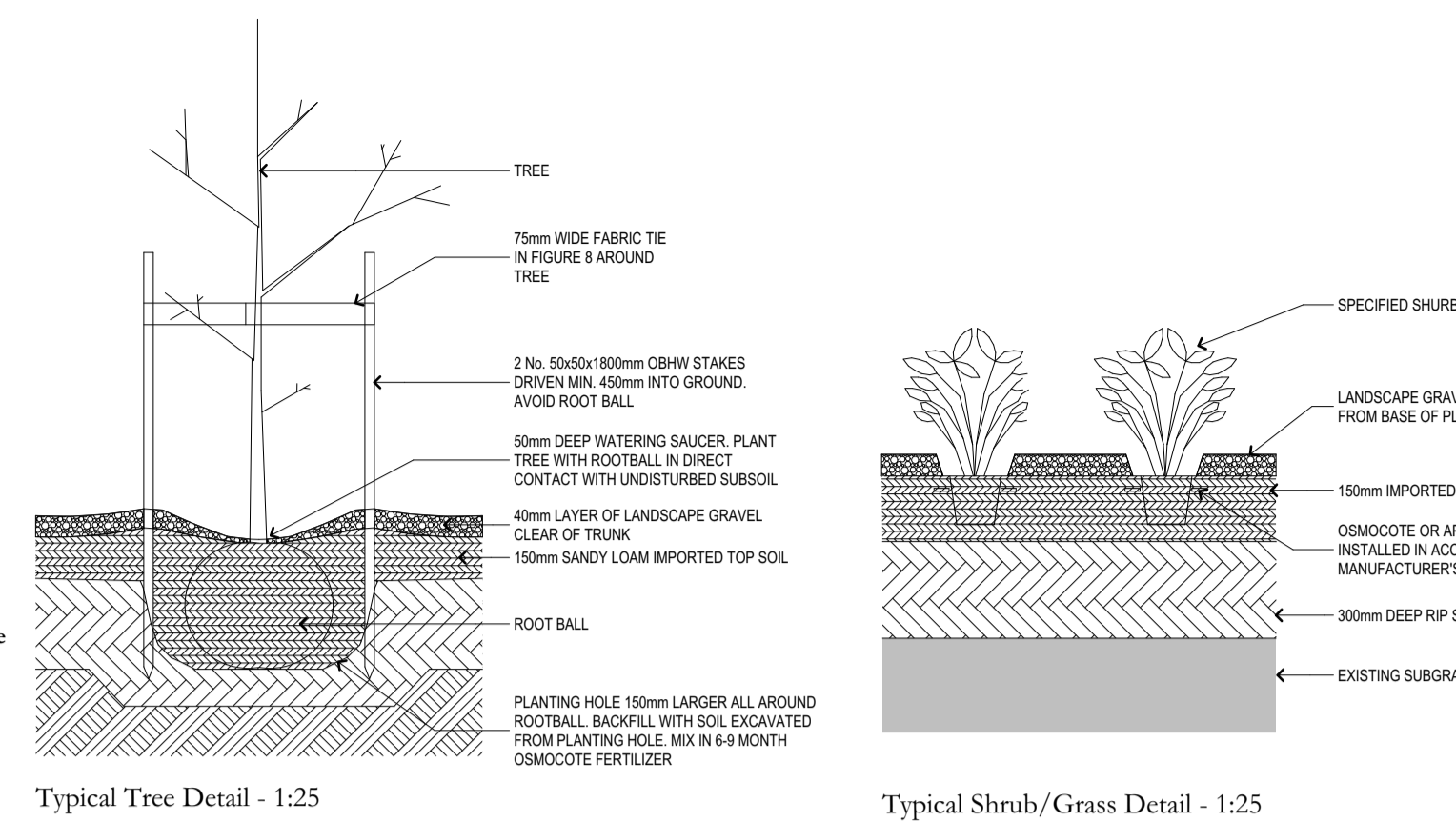


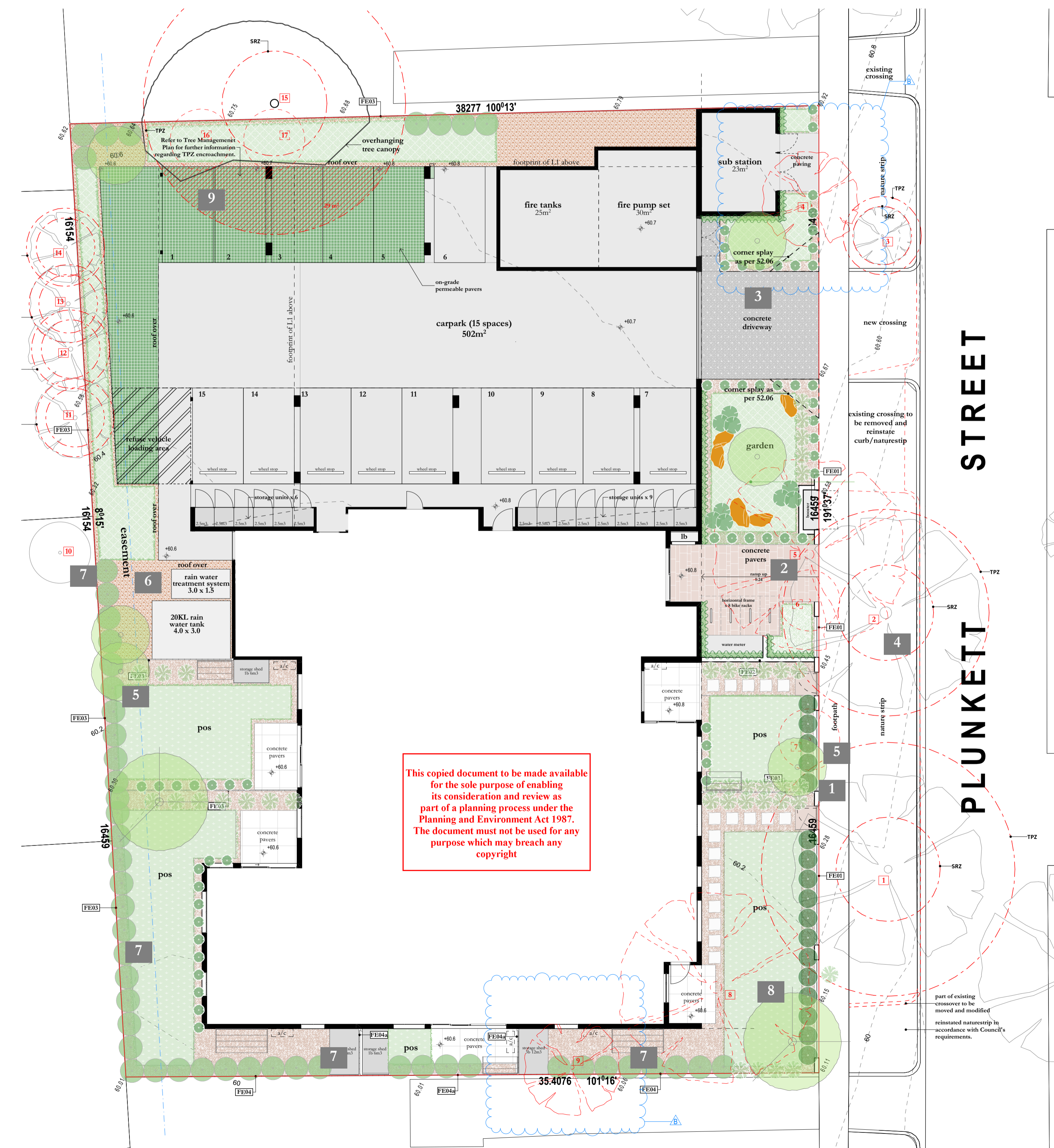
LEGEND

	existing tree to be retained		screening plant <i>Olearia ramulosa</i>		lawn
	existing tree to be removed		low shrub <i>Lavandula angustifolia</i>		feature landscape rock
	canopy tree <i>Allocasuarina verticillata</i>		grasses <i>Lomandra Longifolia</i> <i>Poa Morrisii</i>		landscape gravel
	small canopy tree <i>White crepe myrtle</i> <i>Banksia marginata</i>		small grasses <i>Lomandra filiformis</i> <i>Dianella admixta</i>		concrete pavers
	screening plant <i>Pittosporum 'Silver Sheen'</i> <i>Pittosporum Green Pillar</i>		climbing planting <i>Ficus pumila</i> <i>Hedera Helix</i>		feature concrete pavers
			permeable pavers		concrete - exposed aggregate
			ground covers <i>Dichondra repens</i> <i>Scaevola albida</i>		concrete pavement
			tree number as per arborist report		



PLANTING PALETTE

Lagerstoemia indica x Fauriei 'Natchez' - White Crepe myrtle 6m x 4m	Allocasuarina Verticillata 10m x 6m	Banksia marginata 5m x 4m	Concrete Pavers & Landscape Gravel	Concrete Driveway Exposed Aggregate	Feature Concrete Pavement (Main entrance)
Lomandra filiformis	Poa morrisii	Dianella admixta	Lomandra Longifolia	Landscape feature rock	Permeable Pavers
				Tree Planting Notes:	
Pittosporum 'Silver Sheen' 4m x 2m	Pittosporum 'Green Pillar' 4m x 3m	Olearia ramulosa 1.6m x 2m	Lavandula angustifolia 1.0m x 1.0m	Automatic drip irrigation system to be implemented in planting areas connected via pump to rainwater tanks. Excavate a square hole twice the width and depth as the rootball. Break up base of hole to a depth of 100mm. Loosen compacted sides of the hole where subsoil is dry, fill hole with water and let drain thoroughly prior to planting. Staple ties in a figure eight pattern approx. 300mm from the top of the stakes. Drive in stakes as specified, position plant so that the top soil of the rootball is level with the finished surface level. Where possible, position the tree so that the branches do not rub against stakes or in future conflict with buildings or overhead wires. Backfill with an even mixture of excavated material and import topsoil, place fertilizer tablets quarter the depth of the rootball, do not allow tablets to come in contact with the rootball. Tamp backfill lightly and form a temporary watering ring. Water tree thoroughly to eliminate air pockets. Provide timber garden edging to all gravel / top soil areas. No building works or facilities are to be provided within the dedicated landscaping areas.	
				FENCE, BALUSTRADE AND SCREEN LEGEND	
Dichondra repens	Scaevola albida	Ficus pumila	Hedera helix	FE01 - New 1.5m high front fence - brick pillars (FM01) with vertical metal slats @ 45° (FM07). FE02 - New 1.5m high masonry brick wall (FM01). FE03 - New 2.1m high timber paling fence. FE04 - New 2.4m high timber paling fence. FE04a - New 2.4m high timber paling fence with 450mm high concrete sleeper retaining wall at base. BAL01 - Metal slat balustrade (FM03) to achieve 1.0m high above FFL with metal solar/privacy shroud extending 500mm around balcony opening. SCR01 - Powdercoated metal privacy screen to 1.7m above FFL. Finish - Matt Anthracite. SCR02 - Powdercoated metal privacy screen to 1.7m above FFL. Finish - Manor Red. SCR03 - Powdercoated metal roof plant screen to 1.8m high. Finish - Dover White. SCR04 - Powdercoated metal privacy shroud (FM05) extending 500mm past balcony opening.	



ADVERTISED PLAN

Landscape Design Intent: Preserve and protect existing trees to the north western and eastern boundary of the site. Complement the built form with compact landscape responses and buffering to adjacent properties.

- 1.5m high brick pier and steel slat fencing (FE01) with angled blades to courtyards with gate to shield views while providing surveillance. Screen planting behind fence to further filter view from street into private open space.
- Low lying shrubs, ground covers and feature concrete pavers to create a welcoming and legible entry point to the building.
- Exposed aggregate concrete driveway.
- Existing eucalyptus trees within the front setback and nature strip.
- Small feature tree and low maintenance understorey planting to private garden areas. Concrete pavers over landscaped gravel affords a permeable surface while connecting outdoor areas.
- Landscape gravel to BOH areas requiring minimal maintenance and permeability.
- Buffer planting to western/southern boundaries to offer ground level screening and soften the building interface.
- Replace existing paperbark tree with new feature tree.
- Permeable pavers installed along the north west corner of the car park to permit refuse truck manoeuvrability while affording a permeable surface to mitigate impact within TPZ of the neighbouring tree at 33 Plunkett St.

TOWN PLANNING NOT FOR CONSTRUCTION

27-31 PLUNKETT ST, BELLFIELD LA.01 Landscape Concept Plan

SCALE	@A1
DATE	04/03/2024
DRAWN BY	FBA
PROJET	23009
REVISION	B

© Ferenc Baranyay Architects Pty Ltd 2024 EXCEPT AS ALLOWED UNDER COPYRIGHT ACT, NO PART OF THIS DRAWING MAY BE REPRODUCED OR OTHERWISE DEALT WITH WITHOUT WRITTEN PERMISSION OF FERENC BARANYAY ARCHITECTS PTY LTD.

09.05.2024 B
04.03.2024 A
29.02.2024 -

FERENC BARANYAY ARCHITECTS