

Project: New Marianist Building  
Emmanuel College, St. Paul's Campus  
423 Blackshaws Road, Altona North VIC 3025

Subject: Current & proposed Waste management Arrangements in place at St. Paul's Campus

This letter is to outline current waste management arrangements at St. Paul's Campus.

Currently we have below numbers of bins on the campus.

- 35x 240 litre bins, usually stored at existing Marianist building, see figure-1.
- 4 x skipper bins, these are usually docked at the northwest corner of existing Marianist building, see figure 1.
- Out of the skipper bins, we have 2 General Waste skips - emptied twice a week. 1 Plastic & Glass skip emptied fortnightly. 1 Paper & Cardboard - emptied fortnightly.
- We utilize a 10.59m long Bucher Front Lift collection vehicle.
- We have all 35 bins cleaned quarterly by ECO Bin cleaning. It is part of the school's regular maintenance program.

In upcoming years, the maximum increase in student numbers will be an additional 56 and increase in staff is estimated to be five staff. Our building maintenance team shall organize to Increase the number of bins proportionately for the increase in student & staff over next ten years.

Space allocation has been made at proposed new paving area as part of stage- 1 works of 10 yr. masterplan, see figure 3 and 4. We confirm that there is enough space to dock few extra numbers of bins as may be required in future.

Fig. 1- Existing location for docking skipper bins near existing Marianist building.



Fig. 2 -Existing location for storing 240 litre bins on campus near existing Marianist building





Fig. 3 – Proposed New Location for docking all bins over new paved area

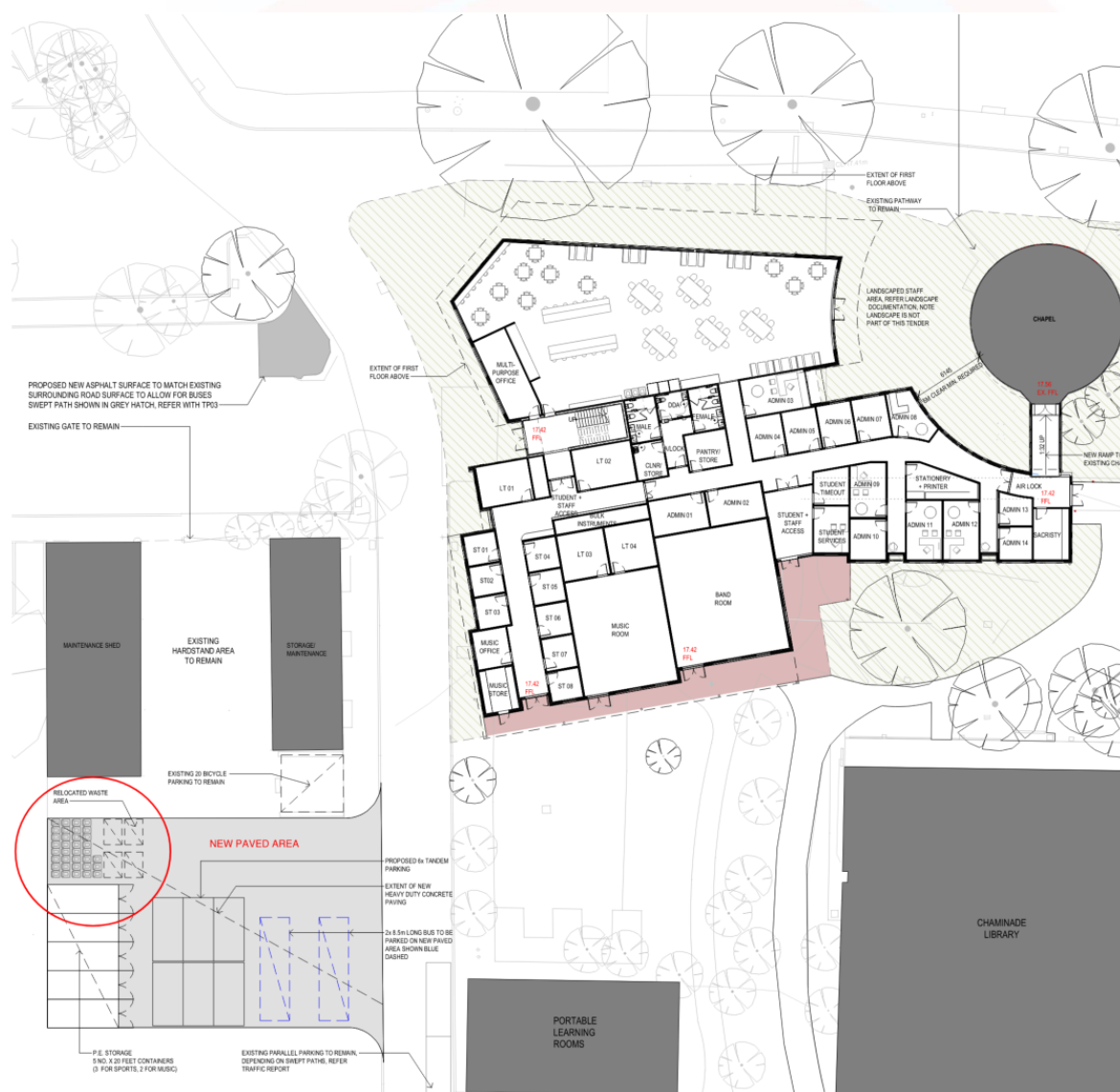
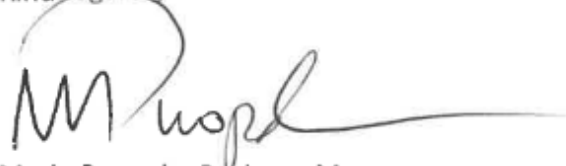


Fig. 4 – Proposed New Location for docking all bins over new paved area



Kind regards,



Mario Puopolo, Business Manager,  
Emmanuel college, St. Paul's Campus