

Copyright State of Victoria. This publication is copyright. No part may be reproduced by any process except in accordance with the provisions of the Copyright Act 1968 (Cth) and for the purposes of Section 32 of the Sale of Land Act 1962 (Vic) or pursuant to a written agreement. The information is only valid at the time and in the form obtained from the LANDATA REGD TM System. None of the State of Victoria, LANDATA REGD TM System, Victorian Land Registry Services Pty. Ltd. ABN 86 627 986 396 as trustee for the Victorian Land Registry Services Trust ABN 83 206 746 897 accept responsibility for any subsequent release, publication or reproduction of the information.

REGISTER SEARCH STATEMENT (Title Search) Transfer of Land Act 1958

VOLUME 07438 FOLIO 416

Security no : 124082319670C
Produced 26/03/2020 09:07 AM

LAND DESCRIPTION

Crown Allotment 259 Parish of Ledcourt.
PARENT TITLE Volume 03089 Folio 746
Created by instrument 2323895 29/06/1950

REGISTERED PROPRIETOR

Estate Fee Simple
Sole Proprietor
RAYMOND CHARLES GRAHAM of DADSWELLS BRIDGE 3385
T815687D 10/08/1995

ENCUMBRANCES, CAVEATS AND NOTICES

For details of any other encumbrances see the plan or imaged folio set out under DIAGRAM LOCATION below.

DIAGRAM LOCATION

SEE TP541404T FOR FURTHER DETAILS AND BOUNDARIES

ACTIVITY IN THE LAST 125 DAYS

NIL

-----END OF REGISTER SEARCH STATEMENT-----

Additional information: (not part of the Register Search Statement)

Street Address: "COOLANGATTA" 4785 WESTERN HIGHWAY LEDCOURT VIC 3385

DOCUMENT END

Delivered from the LANDATA® System by InfoTrack Pty Ltd.

The information supplied by Feigl & Newell Pty. Ltd. has been obtained from InfoTrack Pty Limited by agreement between them. The information supplied has been obtained by InfoTrack Pty Limited who is licensed by the State of Victoria to provide this information via LANDATA® System.

**ADVERTISED
PLAN**

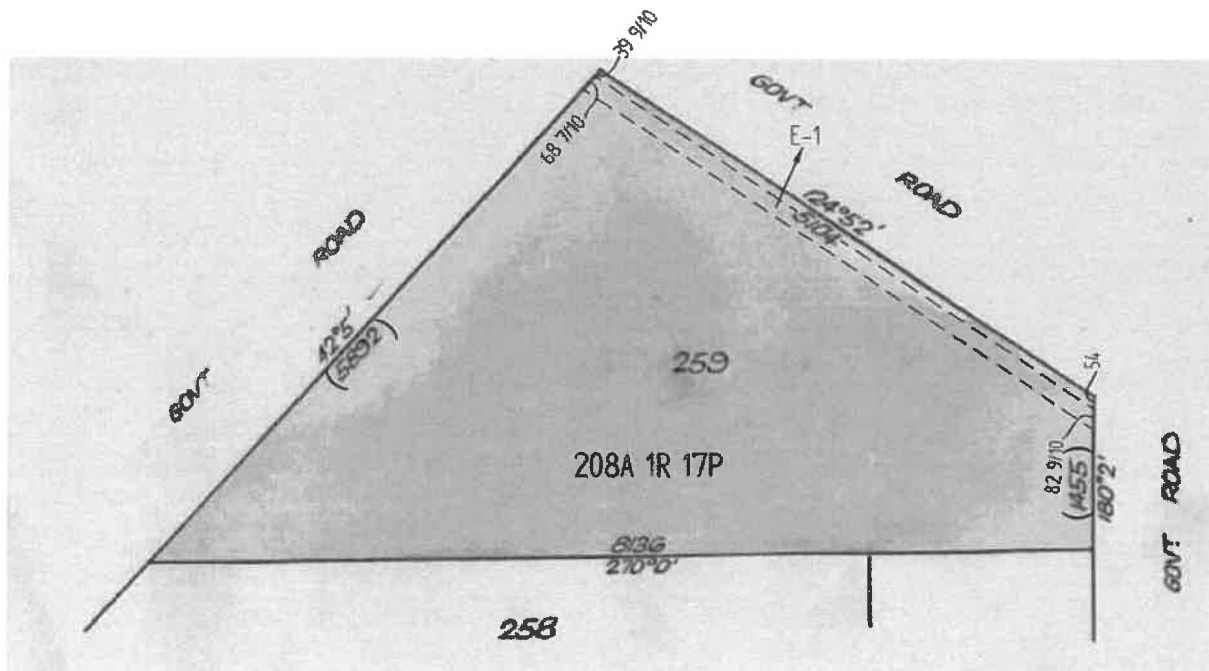
FEIGL & NEWELL
Title Searchers
GPO BOX 2343
Melb 3001

Ph. 9629 3011

TITLE PLAN	EDITION 1	TP 541404T
-------------------	------------------	-------------------

<p>Location of Land</p> <p>Parish: LEDCOURT Township: Section: Crown Allotment: 259 Crown Portion:</p> <p>Last Plan Reference: Derived From: VOL 7438 FOL 416 Depth Limitation: NIL</p>	<p>Notations</p> <p>ANY REFERENCE TO MAP IN THE TEXT MEANS THE DIAGRAM SHOWN ON THIS TITLE PLAN</p>
------------------------------------------------------------------------------------------------------------------------------------------------------------------------------------------------------------------------------------------------------------------------------	------------------------------------------------------------------------------------------------------------

<p>Description of Land / Easement Information</p> <p>E-1 = EASEMENT TO S.E.C CREATED BY C/E A519411</p>	<p>THIS PLAN HAS BEEN PREPARED FOR THE LAND REGISTRY, LAND VICTORIA, FOR TITLE DIAGRAM PURPOSES AS PART OF THE LAND TITLES AUTOMATION PROJECT</p> <p>COMPILED: 22/06/2000 VERIFIED: SO'C</p>
----------------------------------------------------------------------------------------------------------------	-----------------------------------------------------------------------------------------------------------------------------------------------------------------------------------------------------------



ADVERTISED
PLAN

LENGTHS ARE IN LINKS	Metres = 0.3048 x Feet Metres = 0.201168 x Links	Sheet 1 of 1 sheets
----------------------	-----------------------------------------------------	---------------------