



Traffic Management Plan

Unit 4 / 36 New Street,
Ringwood, VIC., 3134

Traffic Management Plan - TMP	
Site	EAPL – Hasting Power Station
Workplace Manager/Management OHS Nominee	
Health and Safety Representative:	
Person completing TMP	Wayne Aumann
Date of TMP	December 2021
Date of Plan Review	March 2022

Courier and/or delivery drop off points
<p>The following safety features are in place to ensure that deliveries of various items to the workplace is undertaken in a safe manner:</p> <ul style="list-style-type: none"> • Designated courier and/or delivery drop off points are located at: <ul style="list-style-type: none"> - Front of Warehouse • Courier and/or delivery drop off points are clearly marked by: <ul style="list-style-type: none"> - Signage • Worksite speed limits are set at (5 km/hr) with clearly displayed signage located at: <ul style="list-style-type: none"> - Front gate - Entrances to warehouse - Along East and West access roads • Speed controlling devices are in place to restrict vehicle speed on site: <ul style="list-style-type: none"> - Nil • Other considerations that are to be documented: <ul style="list-style-type: none"> - Internal roadways are only one way - Vehicles are prevented from accessing the following areas etc. <ul style="list-style-type: none"> ▪ Construction area

**ADVERTISED
PLAN**

This copied document to be made available for the sole purpose of enabling its consideration and review as part of a planning process under the Planning and Environment Act 1987. The document must not be used for any purpose which may breach any copyright



Safe passage of vehicles in (insert workplace name)

(large vehicles, mobile plant etc.)

The following safety arrangements and features are in place when large vehicles or mobile plant such as EWP, forklifts or cranes are required to move around the worksite:

- Prior to entering the HGS construction site, drivers of large vehicles must report to construction supervisor on shift to arrange for a member of staff to act as a "spotter" to supervise vehicle movements whilst on site.
- Forklifts are only to be used in clearly marked areas as designated
- Worksite speed limits are set at (5 km/hr) with clearly displayed signage located at:
 - Front gate
 - Entrances to warehouse
 - Along East and West access roads
- - Vehicles are prevented from accessing the following areas etc.
 - TBC

Parking Arrangements

The following safety arrangements and features are in place to minimise the risks associated with vehicle parking:

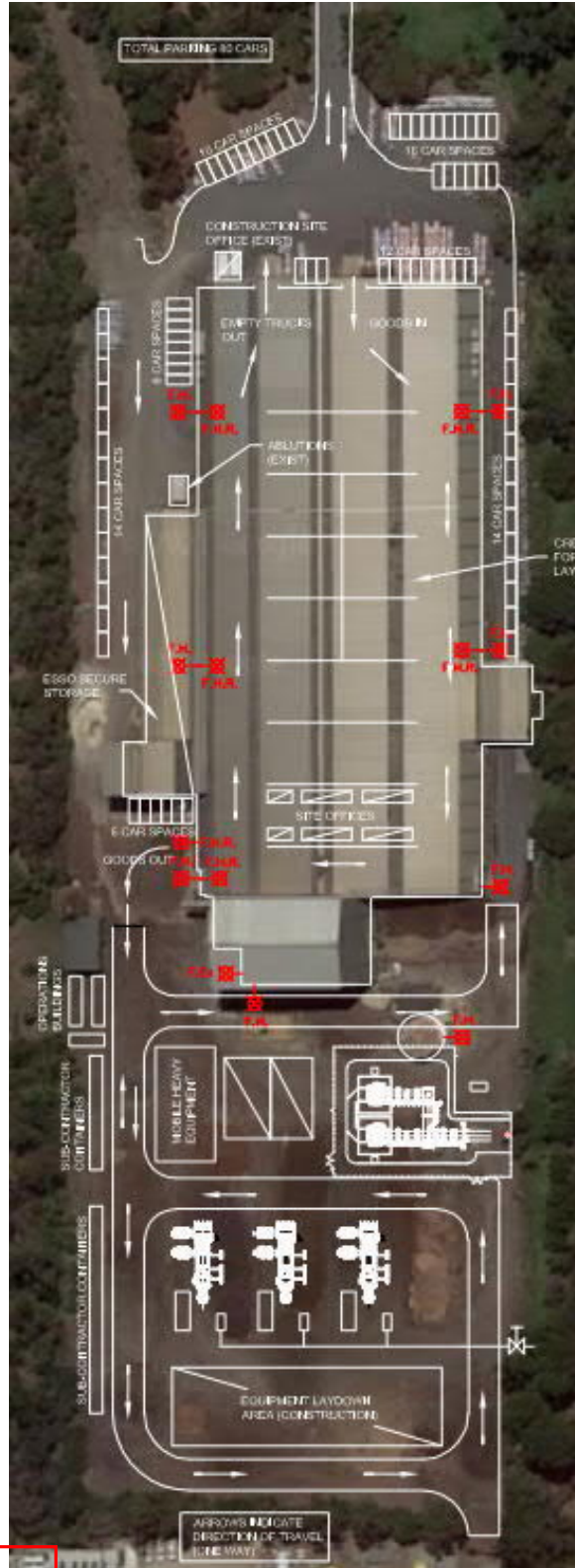
- There are 60+ car parks available for employees, 10 car parks available for visitors and 4 car parks available for people with disabilities.
- Car parking areas are clearly designated with marked parking bays and signage displayed in the following areas:
 - Parallel parking along east and west access roads (28)
 - North of warehouse (16)
 - North West corner of warehouse (external) (8)
 - South of rail siding shed (8)
 - External Northern end of warehouse (12)
- Signage identifying the whereabouts of the Office/Reception is clearly visible from the car park and is located at:
 - North western end of where house
- Pedestrian only pathways are clearly marked internal of the warehouse

This copied document to be made available for the sole purpose of enabling its consideration and review as part of a planning process under the Planning and Environment Act 1987. The document must not be used for any purpose which may breach any copyright

**ADVERTISED
PLAN**



WORKPLACE LAYOUT (Refer attached layout drawing)



**ADVERTISED
PLAN**

This copied document to be made available for the sole purpose of enabling its consideration and review as part of a planning process under the Planning and Environment Act 1987. The document must not be used for any purpose which may breach any copyright

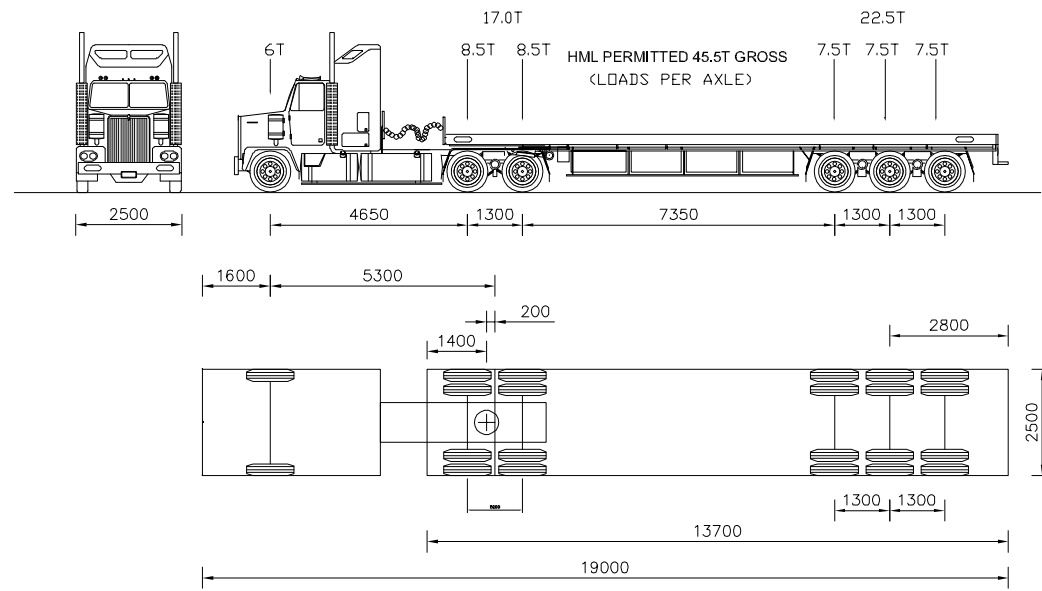


Signatures

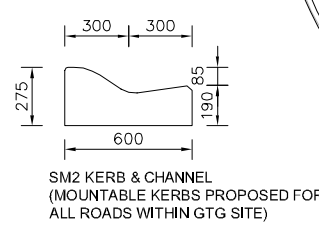
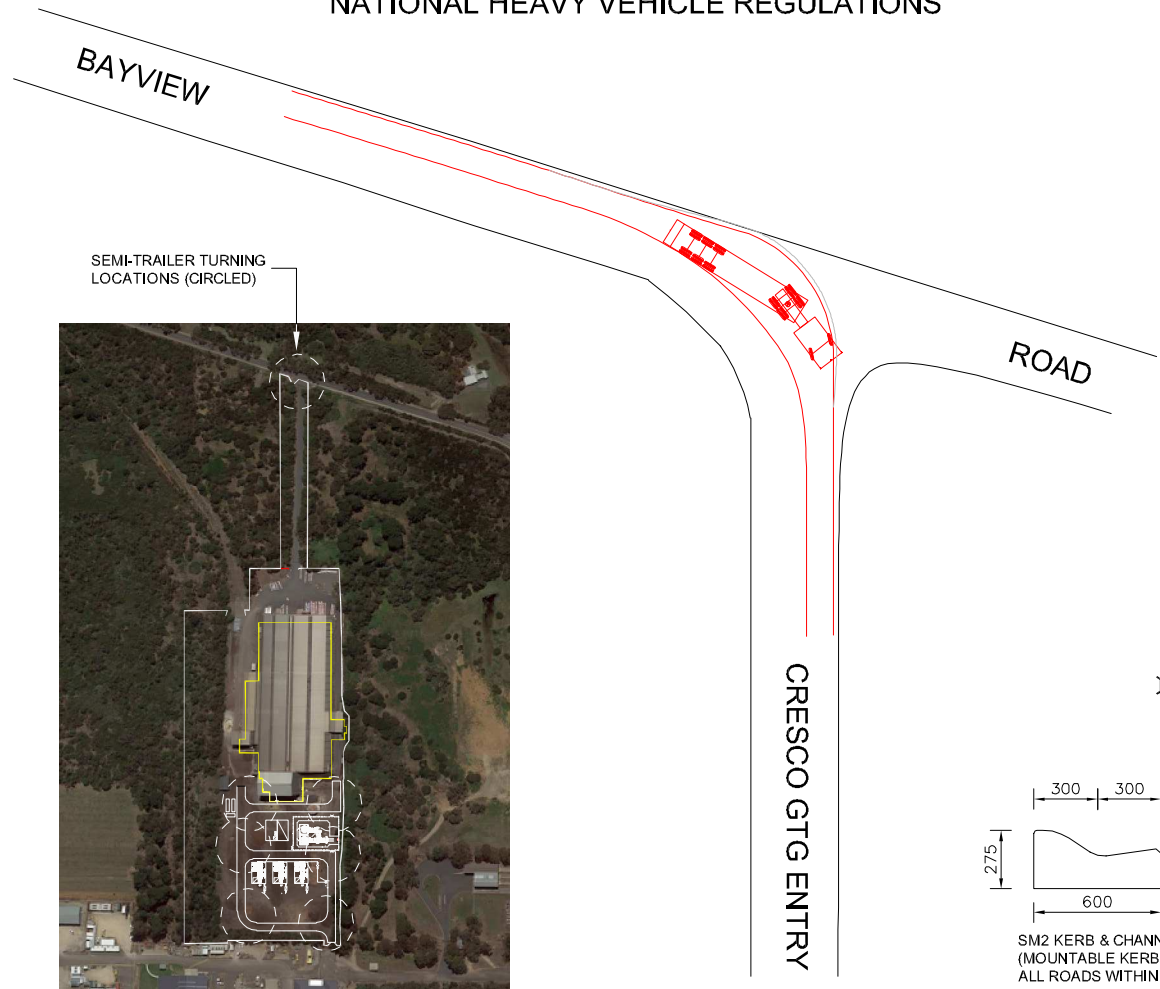
Workplace Manager/Management OHS Nominee		Date
Health and Safety Representative		Date
Person Completing TMP		Date

This copied document to be made available for the sole purpose of enabling its consideration and review as part of a planning process under the Planning and Environment Act 1987. The document must not be used for any purpose which may breach any copyright

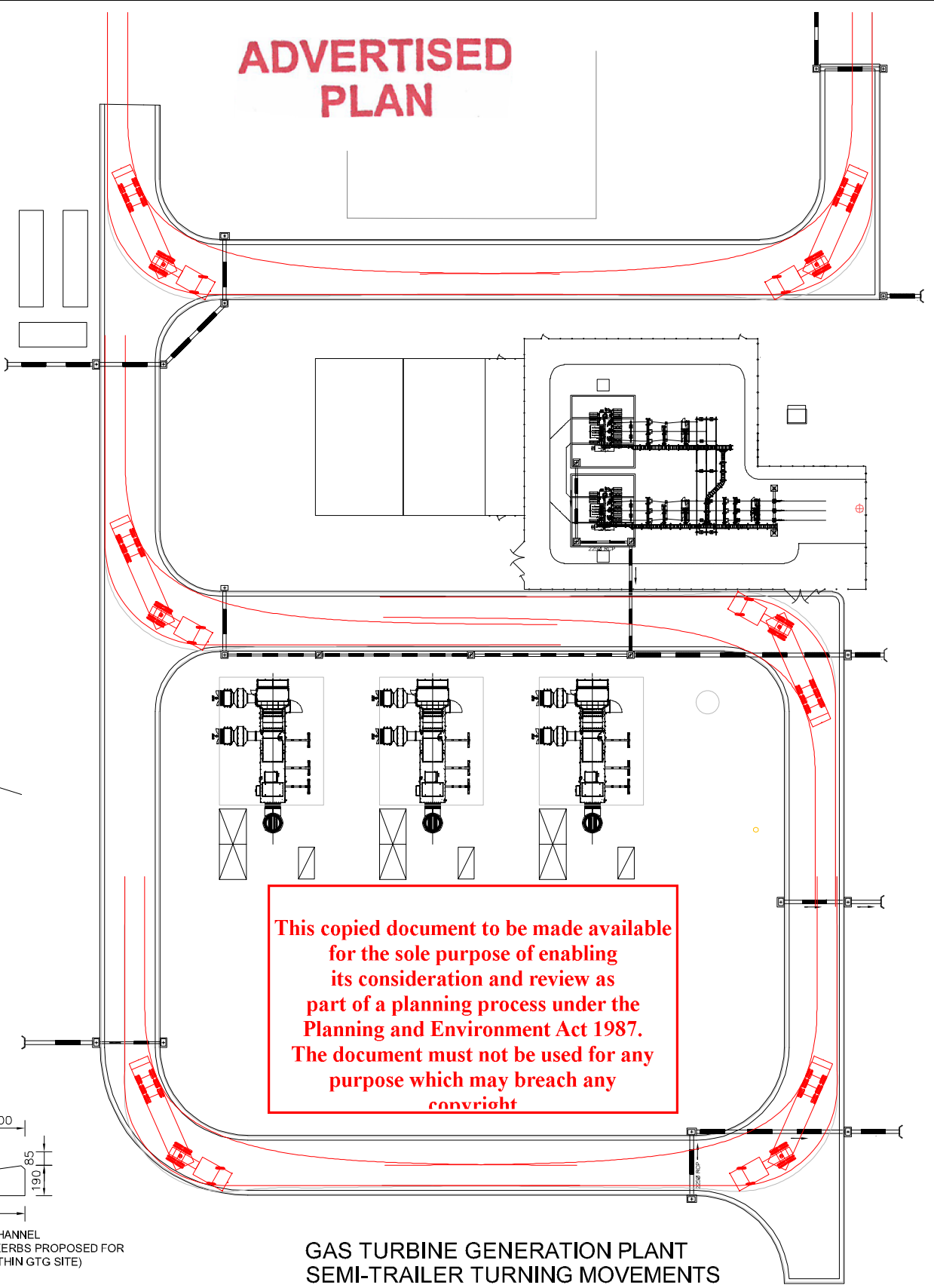
**ADVERTISED
PLAN**



19.0m PRIME MOVER/SEMI-TRAILER
NATIONAL HEAVY VEHICLE REGULATIONS

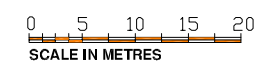


ADVERTISED PLAN



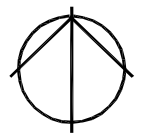
This copied document to be made available for the sole purpose of enabling its consideration and review as part of a planning process under the Planning and Environment Act 1987. The document must not be used for any purpose which may breach any *convright*

GAS TURBINE GENERATION PLANT SEMI-TRAILER TURNING MOVEMENTS



CIVIL DESIGN MANAGEMENT
PTY LTD
ABN 22 071 989 958
24 MANCHESTER GROVE
GLEN HUNTLY 3163
0408 406 220

E			
D			
C			
B	16-12-21	ISSUED FOR REVIEW	GK
Z	---	ISSUED FOR REVIEW	GK
No	DATE	REVISION	APP'D



DOCUMENT PURPOSE	AUTHORITY	DESIGN
SHEET SIZE A3	APPROVED:	DRAWN: GK King
ADVANCE COPY	DATE:	DATE: Dec 2021
FOR INFORMATION	FILE No:	CHECKED:
AUTHORITY APPL	CONTRACT DATE:	APPROVED:
FOR TENDER ONLY		DATE:
FOR CONSTRUCTION		
AS CONSTRUCTED		

EXXON MOBIL HASTINGS
GAS TURBINE PROJECT
TRUCK TURNING

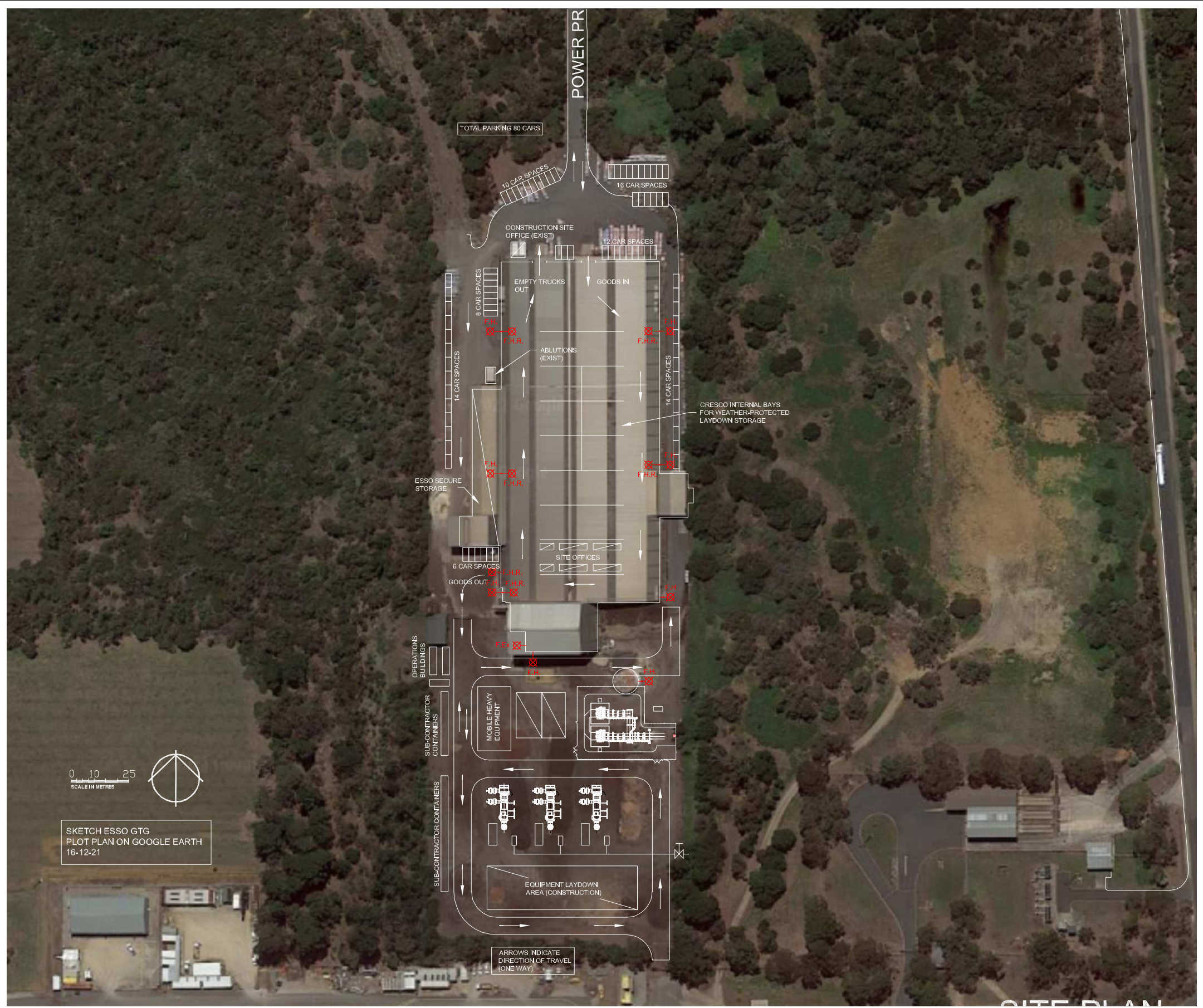


White Technics Pty Ltd
Unit 4, 36 New Street
Ringwood, VIC, 3134
Australia
Tel: +61 3 9847 0222
Fax: +61 3 9847 0333

DRAWING No. _____
SHEET 5 OF 6
FILENAME: ESSO FPP.DWG
REV B

This copied document to be made available for the sole purpose of enabling its consideration and review as part of a planning process under the Planning and Environment Act 1987. The document must not be used for any purpose which may breach any copyright

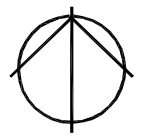
ADVERTISED PLAN



SKETCH ESSO GTG PLOT PLAN ON GOOGLE EARTH 16-12-21

CIVIL DESIGN MANAGEMENT
 ABN 22 071 989 958
PTY LTD
 24 MANCHESTER GROVE
 GLEN HUNTLY 3163
 0408 406 220

E			
D			
C			
B	16-12-21	ISSUED FOR REVIEW	GK
Z	---	ISSUED FOR REVIEW	GK
No	DATE	REVISION	APP'D



DOCUMENT PURPOSE	AUTHORITY	DESIGN
SHEET SIZE A3	APPROVED:	DRAWN: GKing
ADVANCE COPY	DATE:	DATE: Dec 2021
FOR INFORMATION	FILE No:	CHECKED:
AUTHORITY APPL	CONTRACT DATE:	APPROVED:
FOR TENDER ONLY		DATE:
FOR CONSTRUCTION		
AS CONSTRUCTED		

EXXON MOBIL HASTINGS
GAS TURBINE PROJECT
CONSTRUCTION ARRANGEMENTS



White Technics Pty Ltd
 Unit 4, 36 New Street
 Ringwood, VIC, 3134
 Australia
 Tel: +61 3 9847 0222
 Fax: +61 3 9847 0333

FILENAME: ESSO FPP.DWG
 SHEET 6 OF 6
 DRAWING No.
 REV B