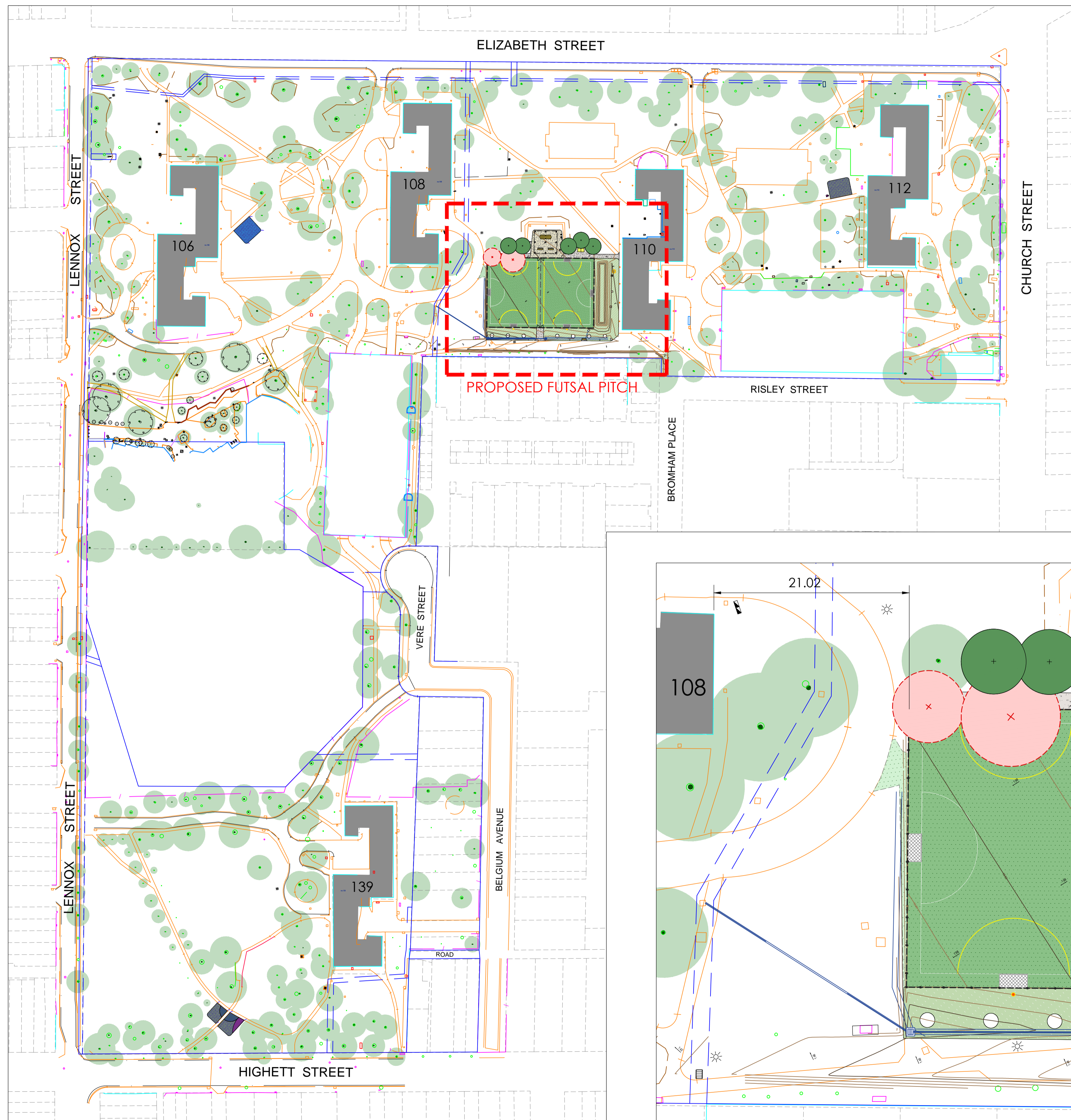
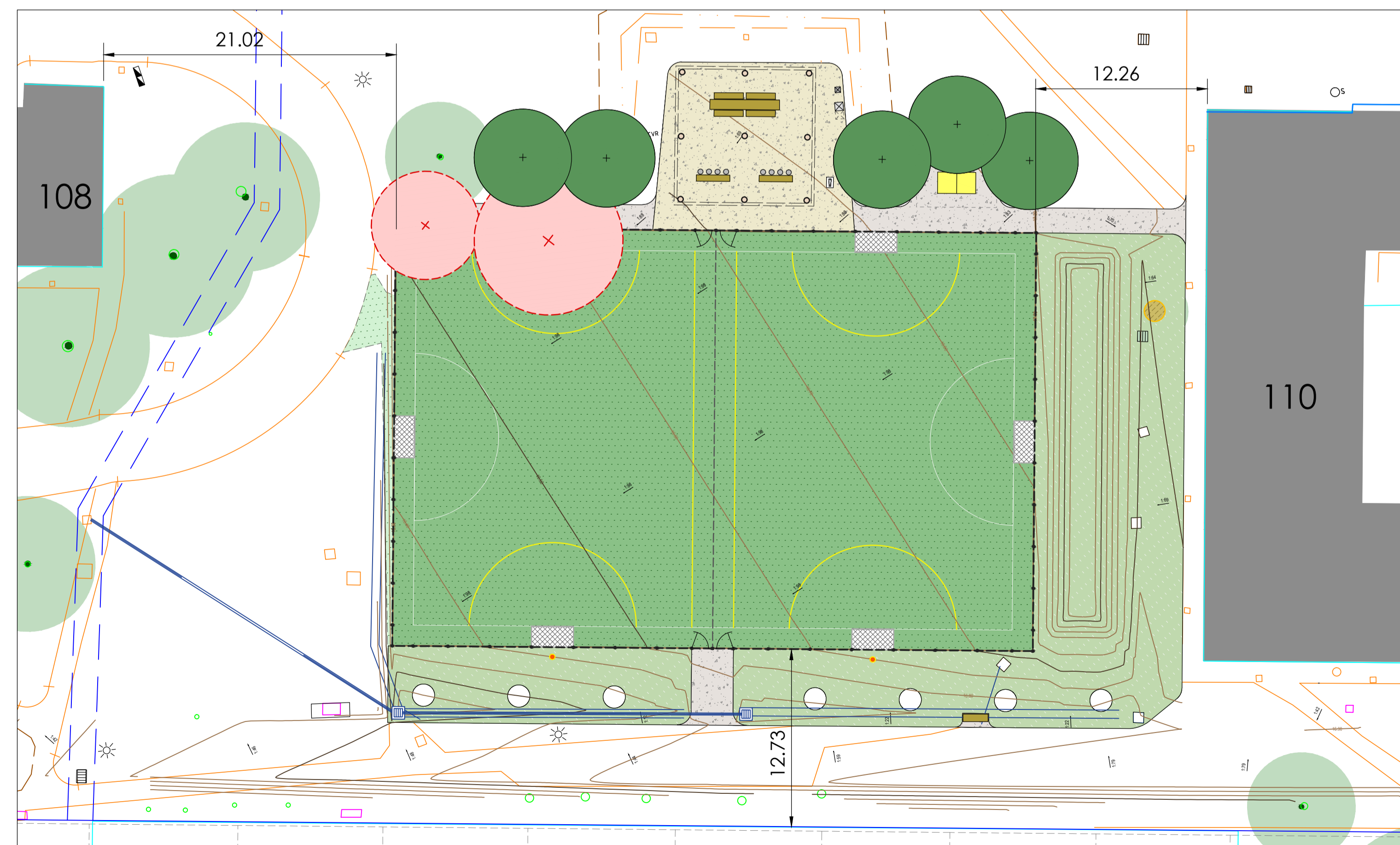


North Richmond Housing Estate

Proposed Futsal Pitch



Locality Plan
Scale 1:1000 @ A1



Proposed Futsal Pitch - Concept Plan
Scale 1:250 @ A1

LEGEND

- SITE PREPARATION**
 - REMOVAL OF EXISTING SURFACE OR MATERIAL AS NOTED
 - DEMOLITION OF EXISTING SURFACE OR MATERIAL AS NOTED
 - RETENTION OF EXISTING OBJECT AS NOTED
 - TREE PROTECTION FENCING
- KNOWN UNDERGROUND SERVICES**
 - WATER
 - SEWER
 - STORMWATER
 - TELSTRA
 - GAS
 - ELECTRICAL
 - UNKNOWN
- GRADING**
 - PROPOSED FINISH SURFACE LEVEL
 - EXISTING CONTOUR LINE
 - EXISTING CONTOUR LINE (MAJOR)
- SURFACES**
 - PV1.1A RUBBER SURFACING - COLOUR A
 - PV1.1B RUBBER SURFACING - COLOUR B
 - PV1.1C RUBBER SURFACING - COLOUR C
 - PV1.1D RUBBER SURFACING - COLOUR D
 - PV1.1E RUBBER SURFACING - COLOUR E
 - PV1.2 NO-FINES CONCRETE BASE FOR RUBBER SURFACING
 - PV2.1 IMPACT ABSORBING MATTING
- FENCES**
 - FEL.1 FENCE - TYPE 1
 - FEL.1 GATE - TYPE 1
- PLAY EQUIPMENT**
 - PEL.1 EXISTING ROCKERS

DO NOT SCALE - USE WRITTEN DIMENSIONS ONLY

No	DATE	AMENDMENTS	BY



CLIENT
HOMES VICTORIA

PROJECT
NORTH RICHMOND HOUSING ESTATE
PROPOSED FUTSAL PITCH

DRAWING
CONCEPTUAL LAYOUT PLAN

STATUS
ISSUED

	SURVEYED SURFCAST	DRAWN SURFCAST
	DESIGNED	DATUM AHD/IMG84
	SCALE (A1) AS SHOWN	SCALE (A3) AS SHOWN

DATE
JANUARY 2022

APPROVED

PROJ. NO. 2022 - 015	FILE NAME NORTH RICHMOND HE	REV. A
SHEET No. 1 of 1		

NORTH RICHMOND HOUSING ESTATE LANDSCAPE & GREENING - FUTSAL PITCH

ISSUE

DRAFT TENDER ISSUE

CLIENT



PREPARED BY



Landscape Architect
Urban Initiatives

MELBOURNE OFFICE
Ground Floor
143 Franklin Street
Melbourne, Vic 3000

T: (03) 9329 6844
F: (03) 9329 6336
E: office@urbaninitiatives.com.au
W: www.urbaninitiatives.com.au

HOBART OFFICE
City Mill
Level 3 11 Morrison Street
Hobart, Tas 7000

T: (03) 6223 3138
E: Andrew@urbaninitiatives.com.au
W: www.urbaninitiatives.com.au



SITE LOCATION PLAN
NTS

DRAWING REGISTER

- LD0.0 COVER PAGE, LOCATION PLAN, LEGEND & DRAWING REGISTER
- LD1.1 SITE PREPARATION & DEMOLITION PLAN
- LD2.1 SURFACES & MATERIALS PLAN
- LD4.1 SETOUT PLAN
- LD5.1 PLANTING PLAN
- LD6.1 SECTIONS AND ELEVATIONS
- LD7.1 DETAILS 01
- LD7.2 DETAILS 02

LEGEND

DEMOLITION & SITE PREPARATION

- PAVING TO BE REMOVED
- GRASS TO BE REMOVED
- TREE TO BE REMOVED
- OBJECT TO BE REMOVED
- OBJECT TO BE SALVAGED
- OBJECT TO BE RETAINED AND PROTECTED
- TREE PROTECTION FENCING

KNOWN UNDERGROUND SERVICES

- WATER
- SEWER
- STORMWATER
- TELSTRA
- GAS
- ELECTRICAL
- UNKNOWN

PAVING

- PV1.1 NORMAL GREY CONCRETE PAVING
- PV1.2 EXPOSED AGGREGATE CONCRETE PAVING
- PV2.1 SYNTHETIC TURF

GRASSING

- GR1.1 INSTANT TURF
- GR1.2 GRASS SPRIGS (TO MAKE GOOD AREAS)

SOFTSCAPE

- SO1.1 MULCH TO TREE PLANTING

EDGES & WALLS

- LE1.1 STEEL EDGE - TYPE 01
- WL1.1 CONCRETE WALL - TYPE 01

FENCES & GATES

- FE1.1 BLACK CYCLONEMESH FENCING (3.6m)
- FE1.2 CURTAIN DIVIDER NET (3.6m)
- FE2.1 BLACK CYCLONEMESH GATES (1.1m)

FURNITURE & FIXTURES

- LF1.1 BENCH TYPE 01
- LF1.2 SEAT WITH BACK & ARMRESTS TYPE 01
- LF2.1 LOOKOUT TABLE AND STOOLS
- LF2.1 COMMUNAL TABLE PICNIC SETTING
- LF3.1 RETRACTABLE FUTSAL GOALS
- LF3.2 STEEL OUTDOOR TABLE TENNIS TABLE
- LF4.1 REPAINTING TO SHELTER POSTS & BEAMS
- LF5.1 ACCESSIBLE DRINKING FOUNTAIN WITH DOG BOWL
- LF6.1 BIN SURROUND (WITH SPACE ALLOCATION FOR FUTURE RECYCLING SURROUND)

LIGHTING & FIXTURES

- LX1.1 FUTSAL FLOODLIGHTING ON 15m POLES - REFER ELECTRICAL ENGINEER DOCUMENTS
- LX2.1 ELECTRICAL PILLAR / CONTROL BOARD - REFER ELECTRICAL ENGINEER DOCUMENTS

TREES & PLANTING

- EXISTING TREE TO BE RETAINED
- PROPOSED ADVANCED TREE PLANTING

SUBCONSULTANTS

WSP AUSTRALIA

Civil & Structural Engineers

Level 15, 28 Freshwater Place
Southbank VIC 3006

T: (03) 9861 1111

CASE CONSULTING

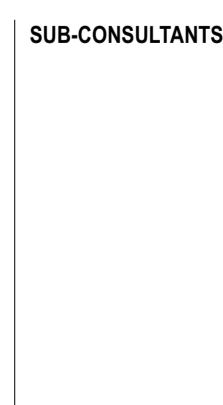
Electrical Engineer



MELB OFFICE
GROUND FLOOR 143 FRANKLIN STREET,
MELBOURNE VIC 3000 AUSTRALIA
T: (03) 9329 6844
E: OFFICE@URBANINITIATIVES.COM.AU

TAS OFFICE
CITY MILL, LEVEL 3 11 MORRISON STREET,
HOBART, TASMANIA 7000 AUSTRALIA
T: (03) 6223 3138
E: ANDREW@URBANINITIATIVES.COM.AU
W: WWW.URBANINITIATIVES.COM.AU

NOTE
THIS WORK IS NOT TO BE COPIED OR
REPRODUCED IN ANY FORM WITHOUT
THE PRIOR WRITTEN PERMISSION OF
THE AUTHOR



NO.	DATE	REVISION	BY	NO.	DATE	ISSUE	BY
2	29/10/21	TENDER ISSUE	TB	1	22/10/21	DRAFT TENDER ISSUE	TB

DRAWN BY | TB
CHECKED BY | TH
PLOT DATE | 29/10/21
CAD FILE NAME | 21045_Landscape_F
| utsal.vsw

NORTH
SCALE
AS SHOWN @A1
1: @A3

PROJECT
21045
North Richmond Housing Estate -
Landscape & Greening
ADDRESS
Elizabeth & Highett St, North Richmond
VIC

DRAWING NO. REV #
LD0.0
DRAWING NAME
Cover Page, Drawing Register & Site
Location Plan

FOR TENDER

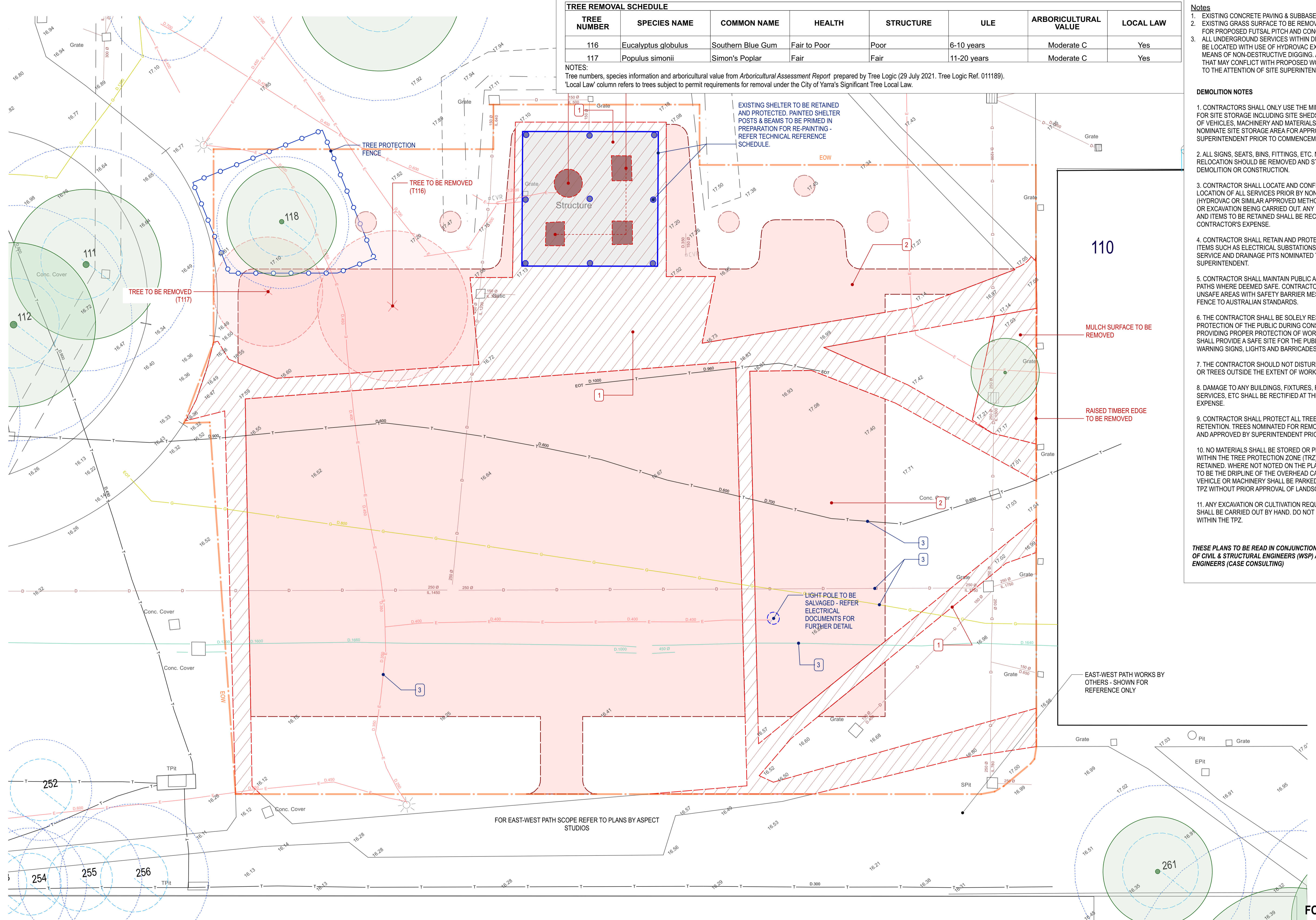
TREE NUMBER	SPECIES NAME	COMMON NAME	HEALTH	STRUCTURE	ULE	ARBORICULTURAL VALUE	LOCAL LAW
116	Eucalyptus globulus	Southern Blue Gum	Fair to Poor	Poor	6-10 years	Moderate C	Yes
117	Populus simonii	Simon's Poplar	Fair	Fair	11-20 years	Moderate C	Yes

NOTES:
 Tree numbers, species information and arboricultural value from *Arboricultural Assessment Report* prepared by Tree Logic (29 July 2021, Tree Logic Ref. 011189).
 Local Law column refers to trees subject to permit requirements for removal under the City of Yarra's Significant Tree Local Law.

- Notes**
- EXISTING CONCRETE PAVING & SUBBASE TO BE REMOVED
 - EXISTING GRASS SURFACE TO BE REMOVED IN PREPARATION FOR PROPOSED FUTSAL PITCH AND CONCRETE PAVING.
 - ALL UNDERGROUND SERVICES WITHIN DISTURBED AREAS TO BE LOCATED WITH USE OF HYDROVAC EXCAVATION OR OTHER MEANS OF NON-DESTRUCTIVE DIGGING. ANY SERVICE LINES THAT MAY CONFLICT WITH PROPOSED WORKS TO BE BROUGHT TO THE ATTENTION OF SITE SUPERINTENDENT.

- DEMOLITION NOTES**
- CONTRACTORS SHALL ONLY USE THE MINIMUM SPACE REQUIRED FOR SITE STORAGE INCLUDING SITE SHEDS, PARKING AND STORAGE OF VEHICLES, MACHINERY AND MATERIALS. CONTRACTOR SHALL NOMINATE SITE STORAGE AREA FOR APPROVAL BY SUPERINTENDENT PRIOR TO COMMENCEMENT OF DEMOLITION.
 - ALL SIGNS, SEATS, BINS, FITTINGS, ETC. NOMINATED FOR RELOCATION SHOULD BE REMOVED AND STORED ONSITE PRIOR TO ANY DEMOLITION OR CONSTRUCTION.
 - CONTRACTOR SHALL LOCATE AND CONFIRM ON-SITE THE LOCATION OF ALL SERVICES PRIOR BY NON-DESTRUCTIVE MEANS (HYDROVAC OR SIMILAR APPROVED METHOD) TO ANY DEMOLITION OR EXCAVATION BEING CARRIED OUT. ANY DAMAGE TO SERVICES, AND ITEMS TO BE RETAINED SHALL BE RECTIFIED AT THE CONTRACTOR'S EXPENSE.
 - CONTRACTOR SHALL RETAIN AND PROTECT ANY SURFACES OR ITEMS SUCH AS ELECTRICAL SUBSTATIONS, SERVICE POLES, SERVICE AND DRAINAGE PITS NOMINATED TO BE RETAINED BY SUPERINTENDENT.
 - CONTRACTOR SHALL MAINTAIN PUBLIC ACCESS TO ADJACENT PATHS WHERE DEEMED SAFE. CONTRACTOR SHALL CORDON OFF UNSAFE AREAS WITH SAFETY BARRIER MESH, AND TEMPORARY FENCE TO AUSTRALIAN STANDARDS.
 - THE CONTRACTOR SHALL BE SOLELY RESPONSIBLE FOR THE PROTECTION OF THE PUBLIC DURING CONSTRUCTION, BY PROVIDING PROPER PROTECTION OF WORKS. THE CONTRACTOR SHALL PROVIDE A SAFE SITE FOR THE PUBLIC BY THE USE OF WARNING SIGNS, LIGHTS AND BARRICADES.
 - THE CONTRACTOR SHOULD NOT DISTURB ANY GRASS, FEATURES OR TREES OUTSIDE THE EXTENT OF WORKS AREA.
 - DAMAGE TO ANY BUILDINGS, FIXTURES, FITTINGS, TREES, SERVICES, ETC SHALL BE RECTIFIED AT THE CONTRACTORS EXPENSE.
 - CONTRACTOR SHALL PROTECT ALL TREES NOMINATED FOR RETENTION. TREES NOMINATED FOR REMOVAL SHALL BE MARKED AND APPROVED BY SUPERINTENDENT PRIOR TO REMOVAL.
 - NO MATERIALS SHALL BE STORED OR PLACED AT ANYTIME WITHIN THE TREE PROTECTION ZONE (TRZ) OF ANY TREES TO BE RETAINED. WHERE NOT NOTED ON THE PLANS, THE TPZ IS DEEMED TO BE THE DRIPLINE OF THE OVERHEAD CANOPY OF THE TREE. NO VEHICLE OR MACHINERY SHALL BE PARKED OR TRAVEL WITHIN THE TPZ WITHOUT PRIOR APPROVAL OF LANDSCAPE ARCHITECT.
 - ANY EXCAVATION OR CULTIVATION REQUIRED WITHIN THE TPZ SHALL BE CARRIED OUT BY HAND. DO NOT USE ANY MACHINERY WITHIN THE TPZ.

THESE PLANS TO BE READ IN CONJUNCTION WITH DOCUMENTS OF CIVIL & STRUCTURAL ENGINEERS (WSP) AND ELECTRICAL ENGINEERS (CASE CONSULTING)



FOR TENDER



MELB OFFICE
 GROUND FLOOR 143 FRANKLIN STREET,
 MELBOURNE VIC 3000 AUSTRALIA
 T: (03) 9329 6844
 E: OFFICE@URBANINITIATIVES.COM.AU

TAS OFFICE
 CITY MILL, LEVEL 3 11 MORRISON STREET,
 HOBART, TASMANIA 7000 AUSTRALIA
 T: (03) 6223 3138
 E: ANDREW@URBANINITIATIVES.COM.AU
 W: WWW.URBANINITIATIVES.COM.AU

NOTE
 THIS WORK IS NOT TO BE COPIED OR REPRODUCED IN ANY FORM WITHOUT THE PRIOR WRITTEN PERMISSION OF THE AUTHOR



CLIENT

SUB-CONSULTANTS

NO.	DATE	REVISION	BY
2	29/10/21	TENDER ISSUE	
1	22/10/21	DRAFT TENDER ISSUE	

NO.	DATE	ISSUE
2	29/10/21	TENDER ISSUE
1	22/10/21	DRAFT TENDER ISSUE

DRAWN BY	TB
CHECKED BY	TH
PLOT DATE	29/10/21
CAD FILE NAME	21045_Landscape_F utsal.vsw

NORTH

SCALE
 1:125
 1:

PROJECT
 21045
 North Richmond Housing Estate -
 Landscape & Greening

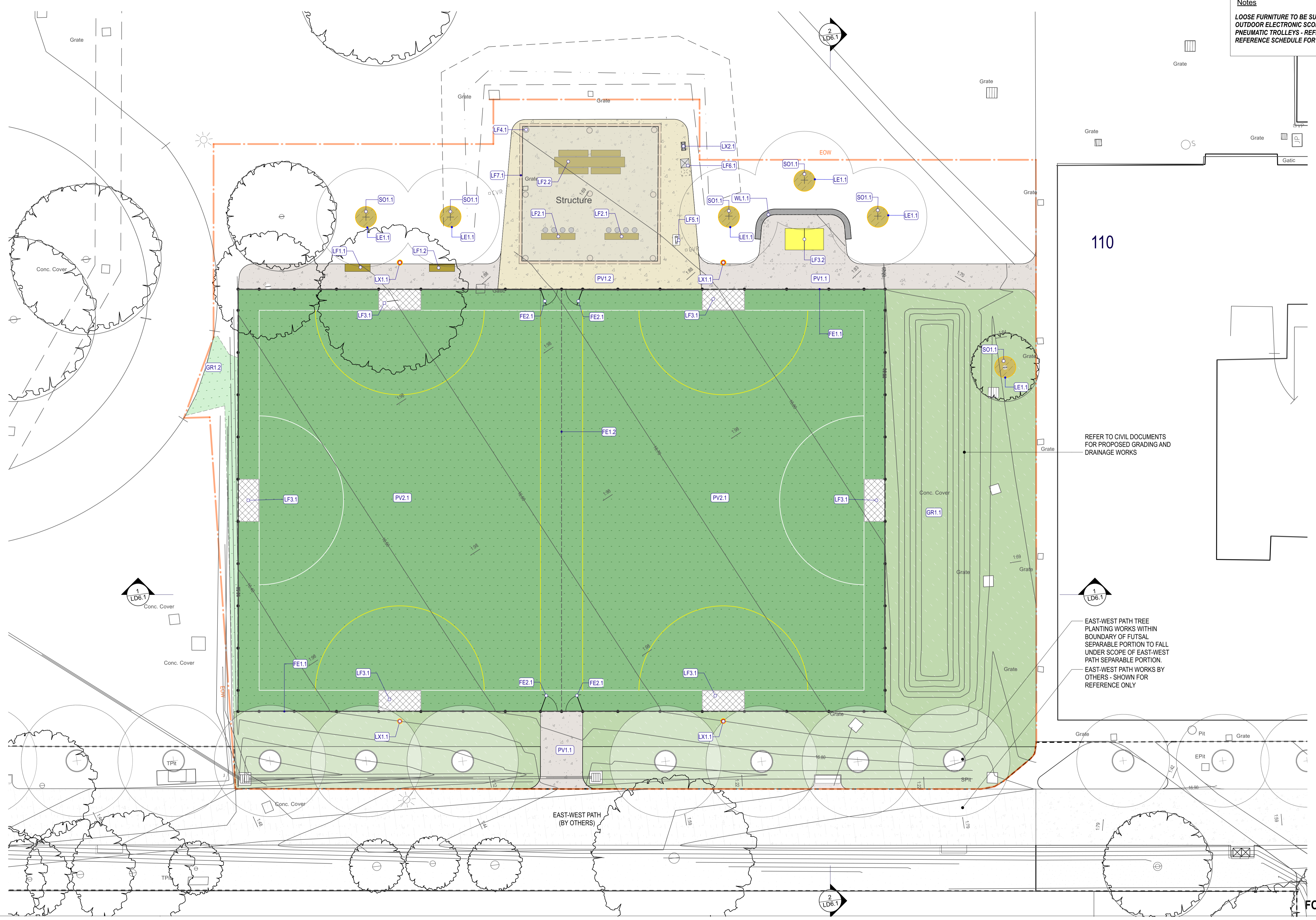
ADDRESS
 Elizabeth & Highett St, North Richmond
 VIC

DRAWING NO.
LD1.1

DRAWING NAME
 Site Preparation and Demolition Plan
 - Futsal

REV #

Notes
 LOOSE FURNITURE TO BE SUPPLIED - LX3.1
 OUTDOOR ELECTRONIC SCOREBOARDS WITH
 PNEUMATIC TROLLEYS - REFER TECHNICAL
 REFERENCE SCHEDULE FOR DETAIL.



110

REFER TO CIVIL DOCUMENTS
 FOR PROPOSED GRADING AND
 DRAINAGE WORKS

EAST-WEST PATH TREE
 PLANTING WORKS WITHIN
 BOUNDARY OF FUTSAL
 SEPARABLE PORTION TO FALL
 UNDER SCOPE OF EAST-WEST
 PATH SEPARABLE PORTION.
 EAST-WEST PATH WORKS BY
 OTHERS - SHOWN FOR
 REFERENCE ONLY

EAST-WEST PATH
 (BY OTHERS)

FOR TENDER



MELB OFFICE
 GROUND FLOOR 143 FRANKLIN STREET,
 MELBOURNE VIC 3000 AUSTRALIA
 T: (03) 9329 6844
 E: OFFICE@URBANINITIATIVES.COM.AU

TAS OFFICE
 CITY MILL, LEVEL 3 11 MORRISON STREET,
 HOBART, TASMANIA 7000 AUSTRALIA
 T: (03) 6223 3138
 E: ANDREW@URBANINITIATIVES.COM.AU
 W: WWW.URBANINITIATIVES.COM.AU

NOTE
 THIS WORK IS NOT TO BE COPIED OR
 REPRODUCED IN ANY FORM WITHOUT
 THE PRIOR WRITTEN PERMISSION OF
 THE AUTHOR



NO.	DATE	REVISION	BY
2	29/10/21	TENDER ISSUE	TB
1	22/10/21	DRAFT TENDER ISSUE	TB

NO.	DATE	REVISION	BY
2	29/10/21	TENDER ISSUE	TB
1	22/10/21	DRAFT TENDER ISSUE	TB

NO.	DATE	REVISION	BY
2	29/10/21	TENDER ISSUE	TB
1	22/10/21	DRAFT TENDER ISSUE	TB

DRAWN BY | TB
CHECKED BY | TH
PLOT DATE | 29/10/21
CAD FILE NAME | 21045_Landscape_F
 utsal.vwx

NORTH

SCALE
 1:125
 1:

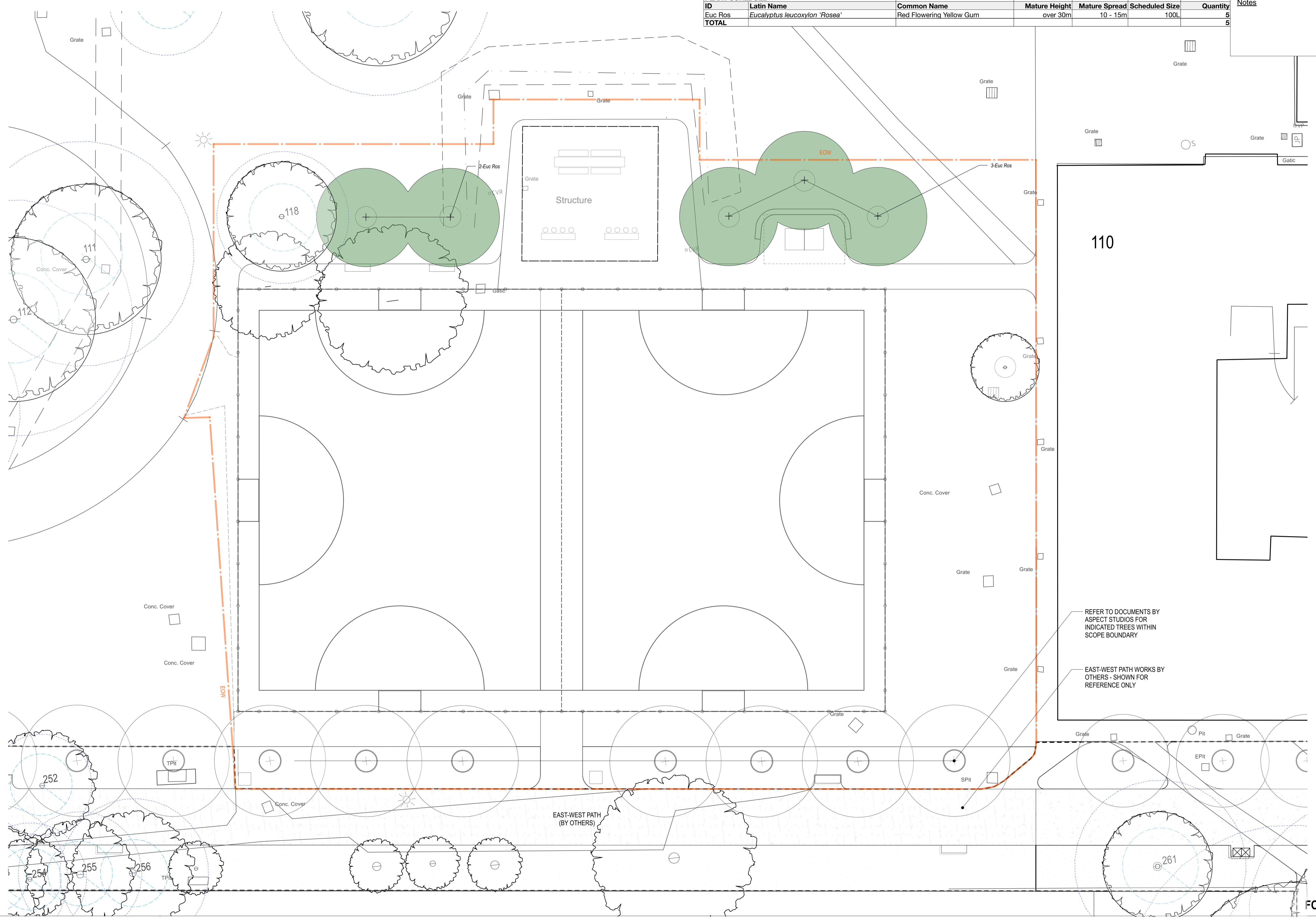
PROJECT
 21045
 North Richmond Housing Estate -
 Landscape & Greening

ADDRESS
 Elizabeth & Highett St, North Richmond
 VIC

DRAWING NO.
LD2.1
DRAWING NAME
 Surfaces & Materials Plan - Futsal

REV #

PLANT SCHEDULE							
ID	Latin Name	Common Name	Mature Height	Mature Spread	Scheduled Size	Quantity	Notes
Euc Ros	<i>Eucalyptus leucoxylon</i> 'Rosea'	Red Flowering Yellow Gum	over 30m	10 - 15m	100L	5	
TOTAL						5	



REFER TO DOCUMENTS BY ASPECT STUDIOS FOR INDICATED TREES WITHIN SCOPE BOUNDARY

EAST-WEST PATH WORKS BY OTHERS - SHOWN FOR REFERENCE ONLY

FOR TENDER

urban initiatives
LANDSCAPE ARCHITECTS & URBAN DESIGN CONSULTANTS

MELB OFFICE
GROUND FLOOR 143 FRANKLIN STREET,
MELBOURNE VIC 3000 AUSTRALIA
T: (03) 9329 6844
E: OFFICE@URBANINITIATIVES.COM.AU

TAS OFFICE
CITY MILL LEVEL 3 11 MORRISON STREET,
HOBART TASMANIA 7000 AUSTRALIA
T: (03) 6223 3138
E: ANDREW@URBANINITIATIVES.COM.AU
W: WWW.URBANINITIATIVES.COM.AU

NOTE
THIS WORK IS NOT TO BE COPIED OR REPRODUCED IN ANY FORM WITHOUT THE PRIOR WRITTEN PERMISSION OF THE AUTHOR

CLIENT

h.v homes victoria

SUB-CONSULTANTS

NO.	DATE	REVISION	BY
2	29/10/21	TENDER ISSUE	
1	22/10/21	DRAFT TENDER ISSUE	

NO.	DATE	REVISION	BY

NO.	DATE	ISSUE	BY
2	29/10/21	TENDER ISSUE	
1	22/10/21	DRAFT TENDER ISSUE	

DRAWN BY | TB

CHECKED BY | TH

PLOT DATE | 29/10/21

CAD FILE NAME | 21045_Landscape_F utball.vsw

NORTH

SCALE
1:125

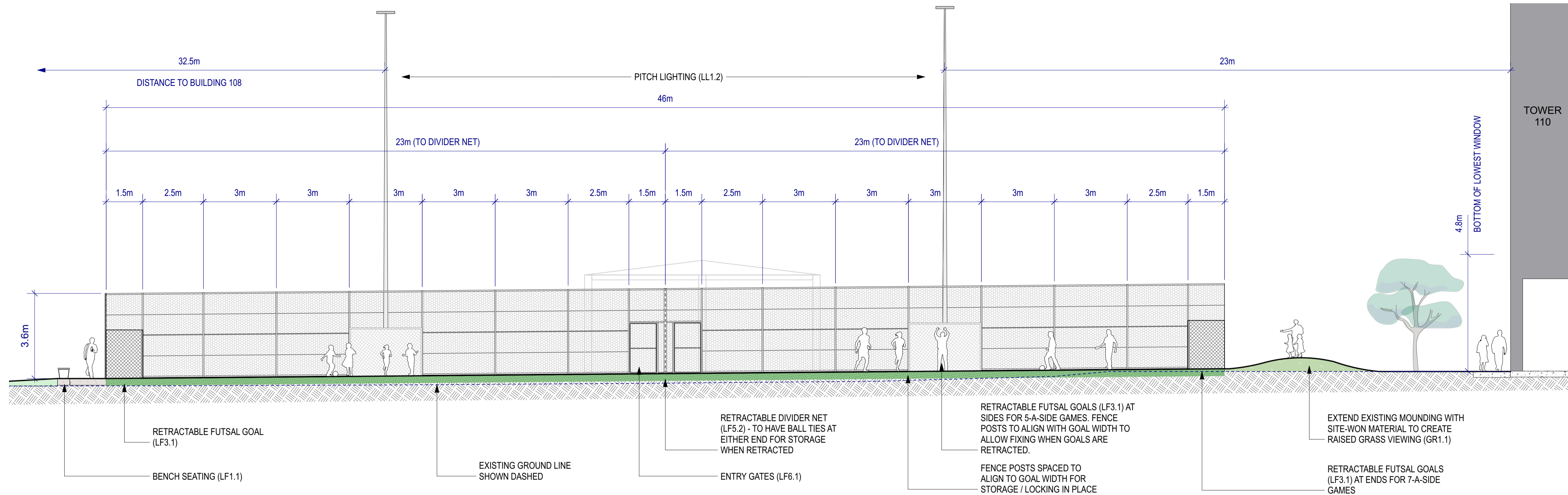
PROJECT
21045
North Richmond Housing Estate -
Landscape & Greening

ADDRESS
Elizabeth & Highett St, North Richmond
VIC

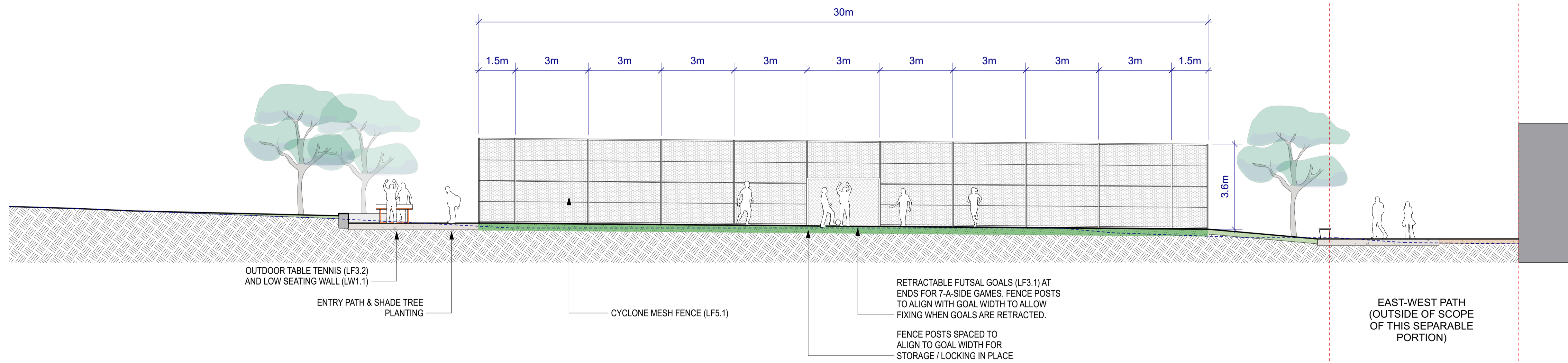
DRAWING NO.
LD5.1

DRAWING NAME
Planting Plan - Futsal

REV #



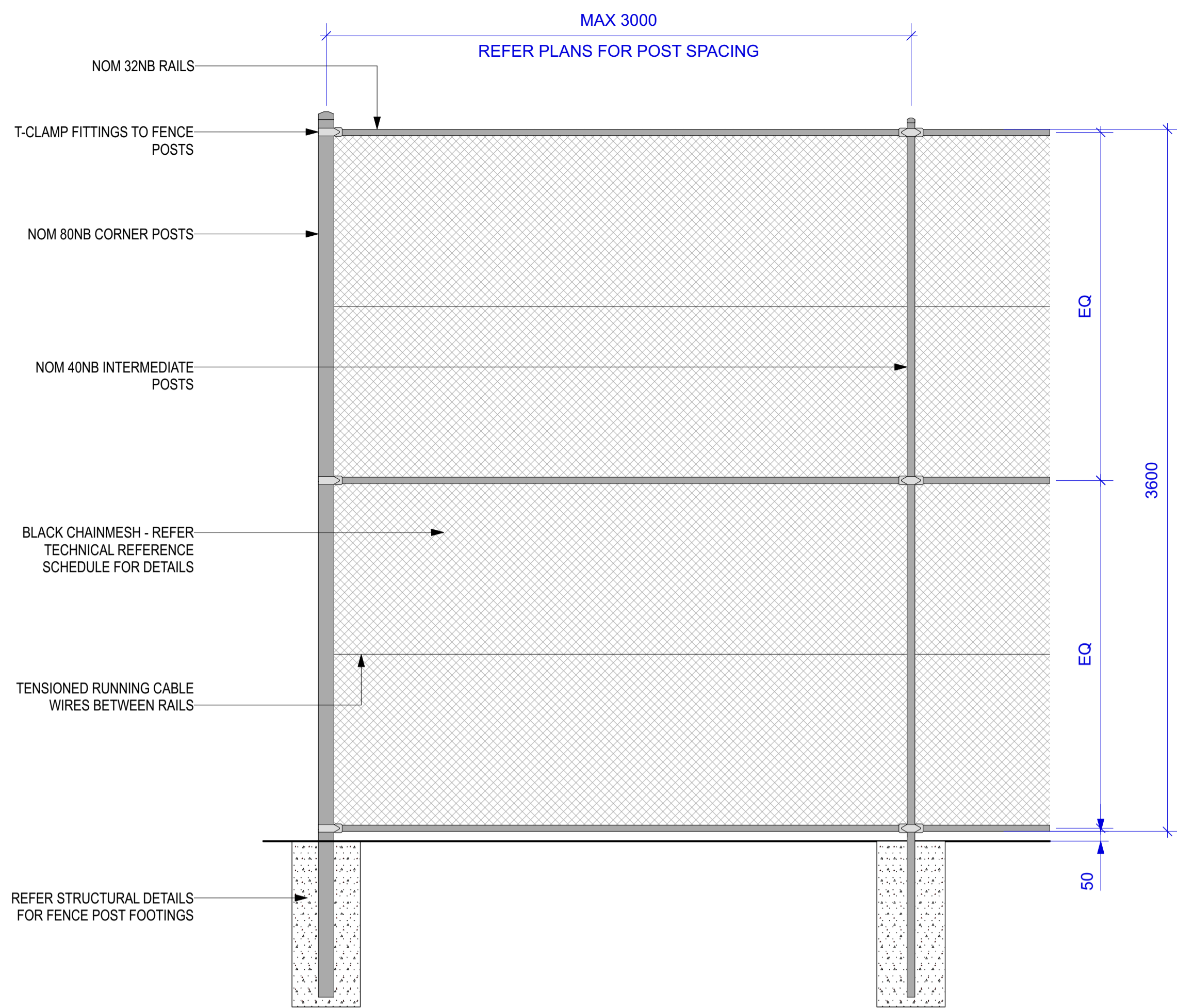
1 Elevation 01
Scale: 1:100



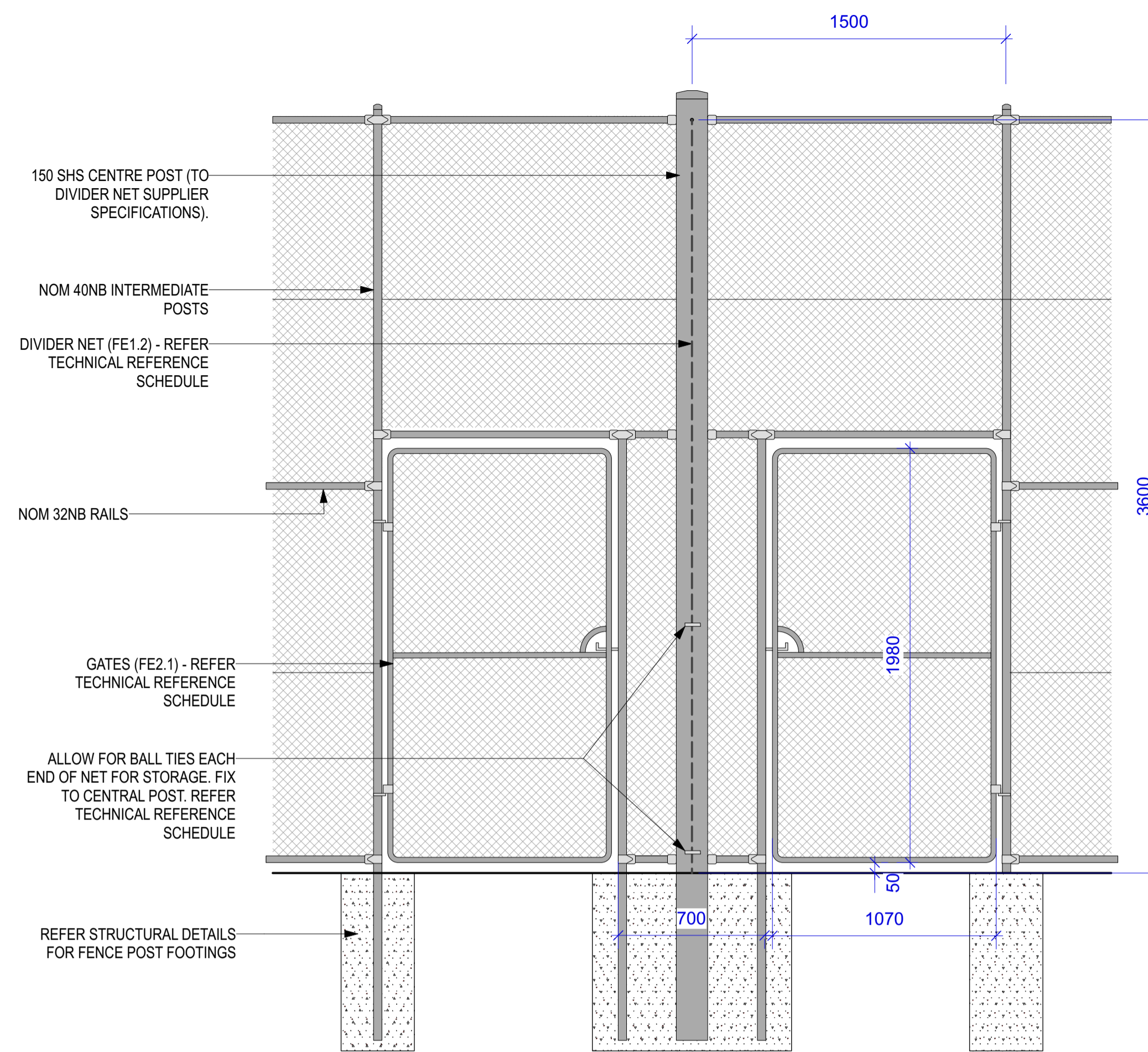
2 Elevation 02
Scale: 1:100

FOR CONSTRUCTION

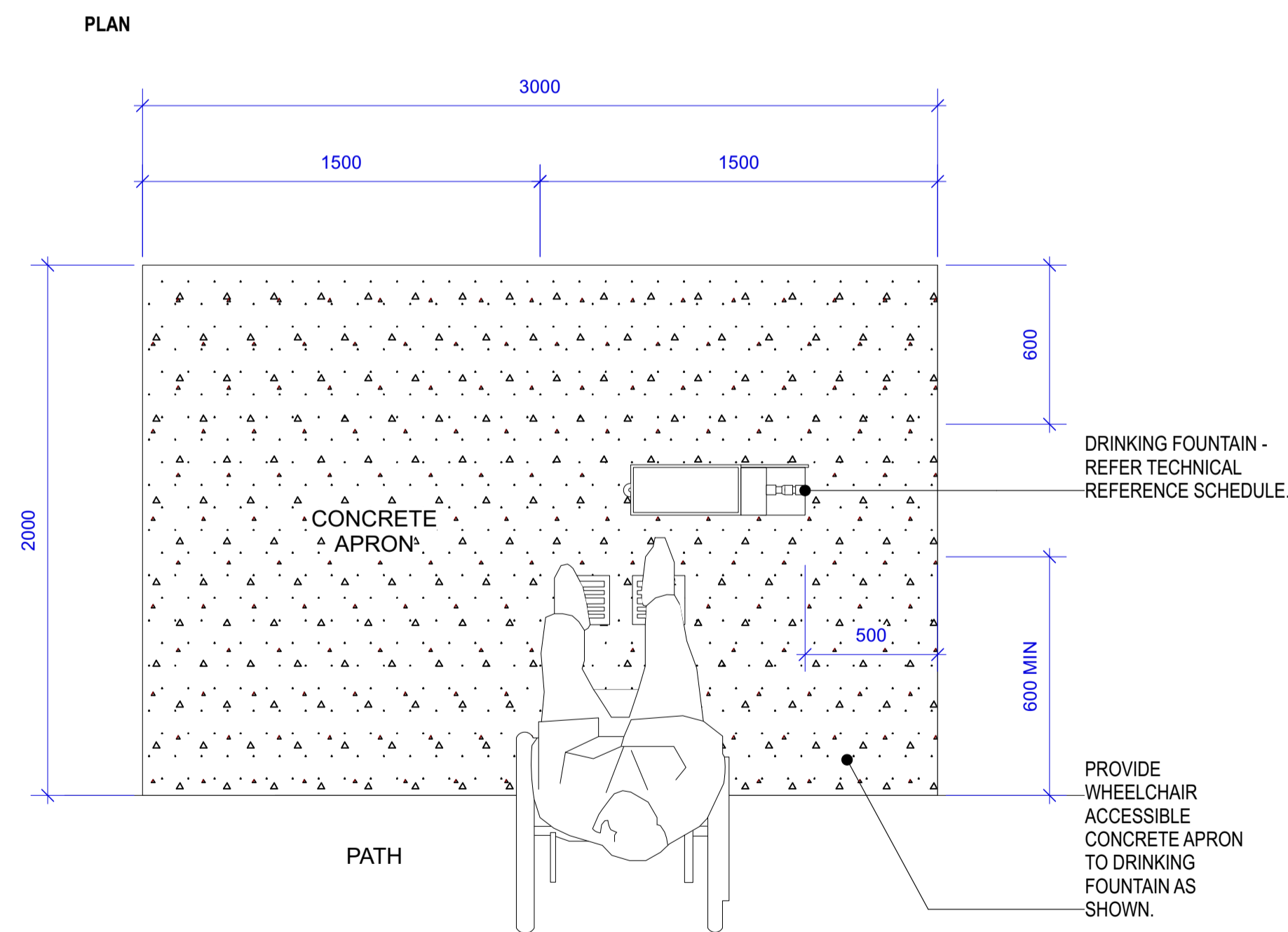
NO.	DATE	REVISION	BY	NO.	DATE	ISSUE	BY
				A	04/02/22	FOR CONSTRUCTION	TB



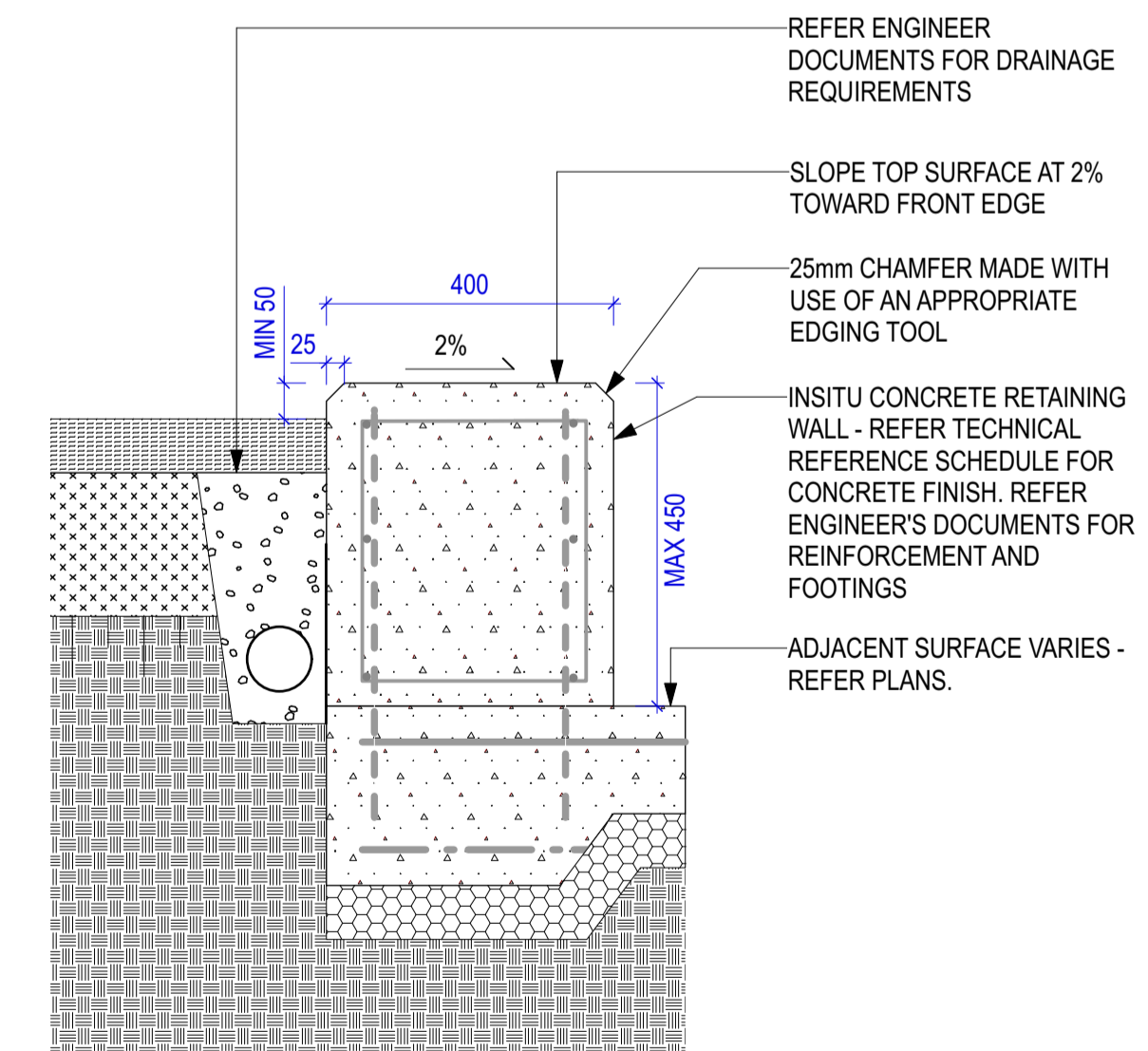
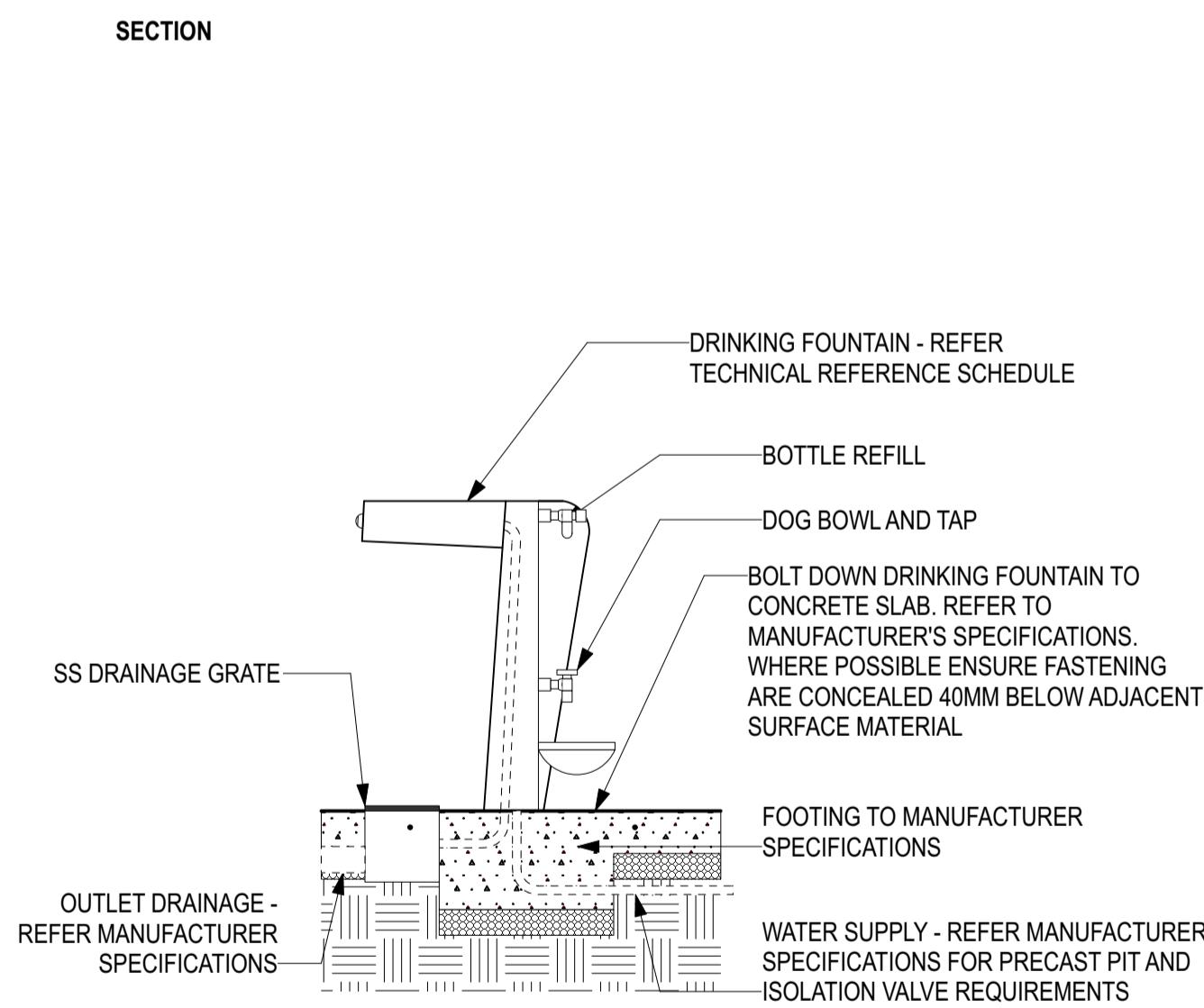
1 TYPICAL CYCLONE MESH FENCE (FE1.1) DETAIL
Scale: 1:20



2 TYPICAL GATES (FE2.1) AND DIVIDER NET (FE1.2) DETAIL
Scale: 1:20

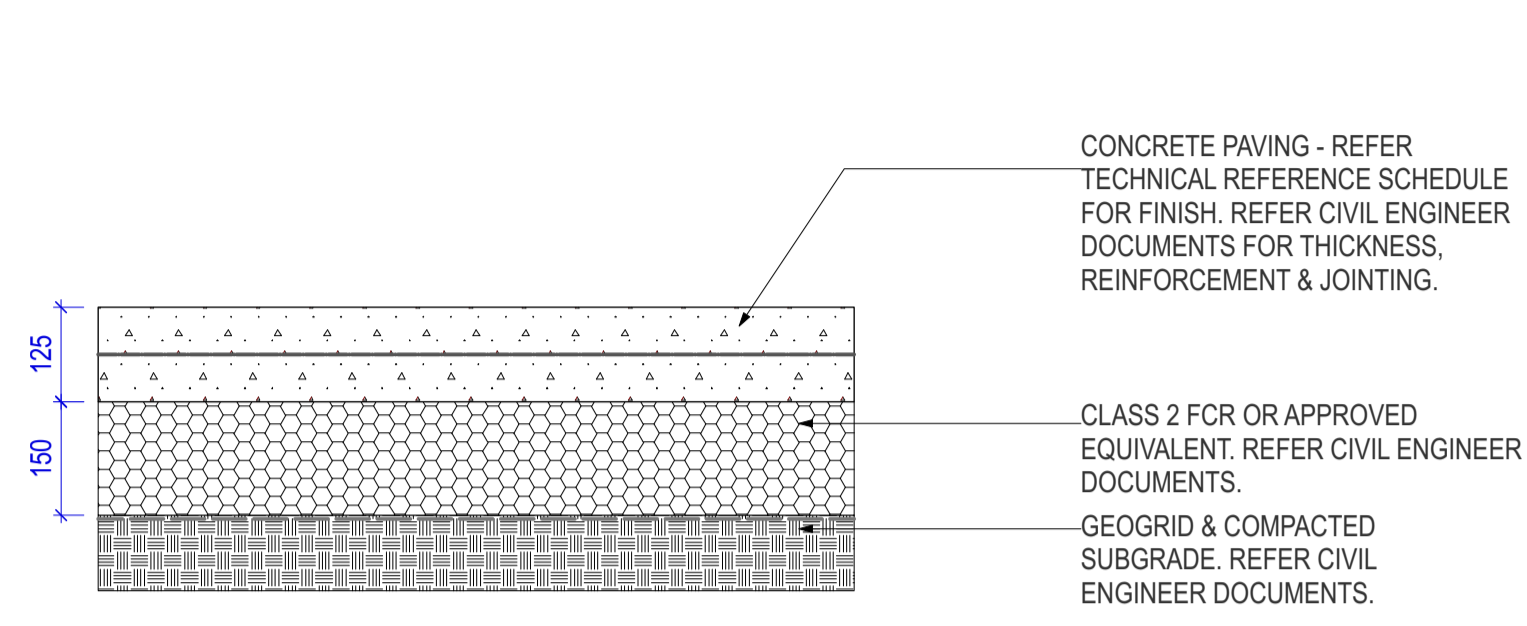


10 DRINKING FOUNTAIN (LF5.1) TYPICAL DETAIL
Scale: 1:20

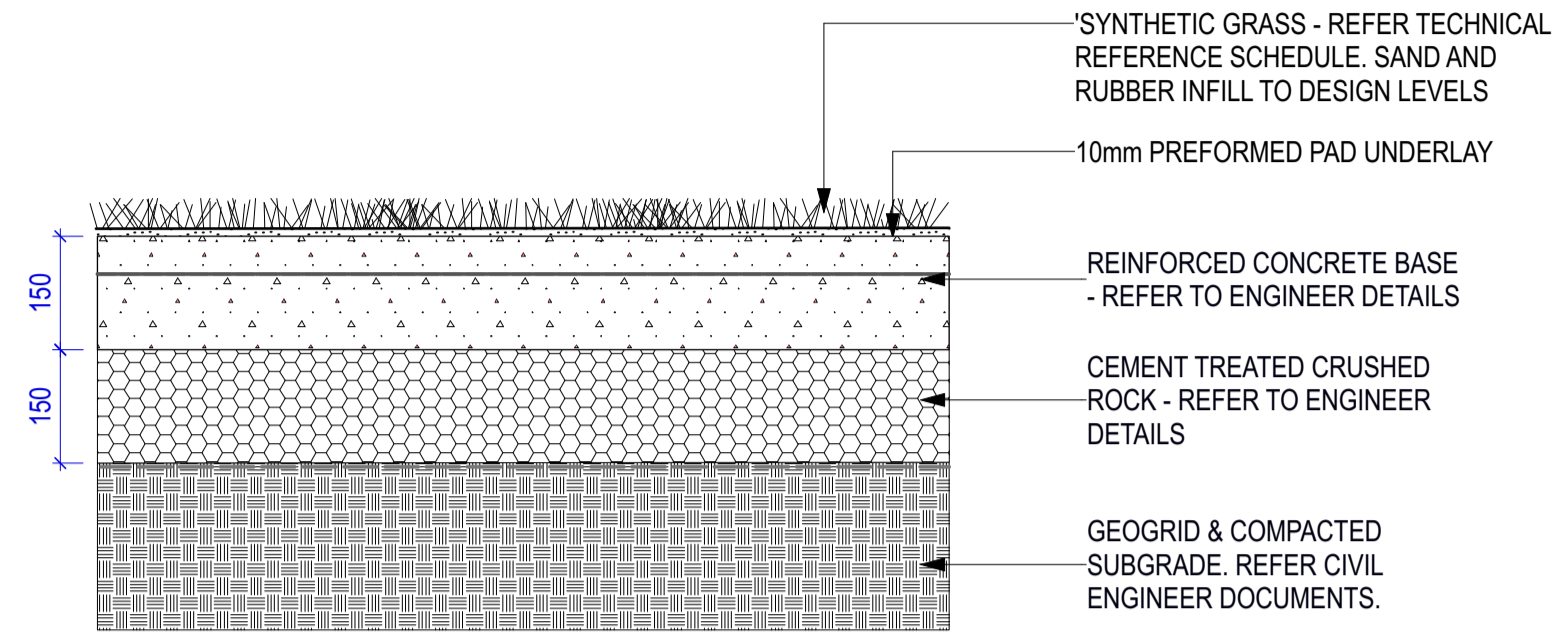


13 LOW RETAINING EDGE WALL (WL1.1) TYPICAL DETAIL
Scale: 1:10

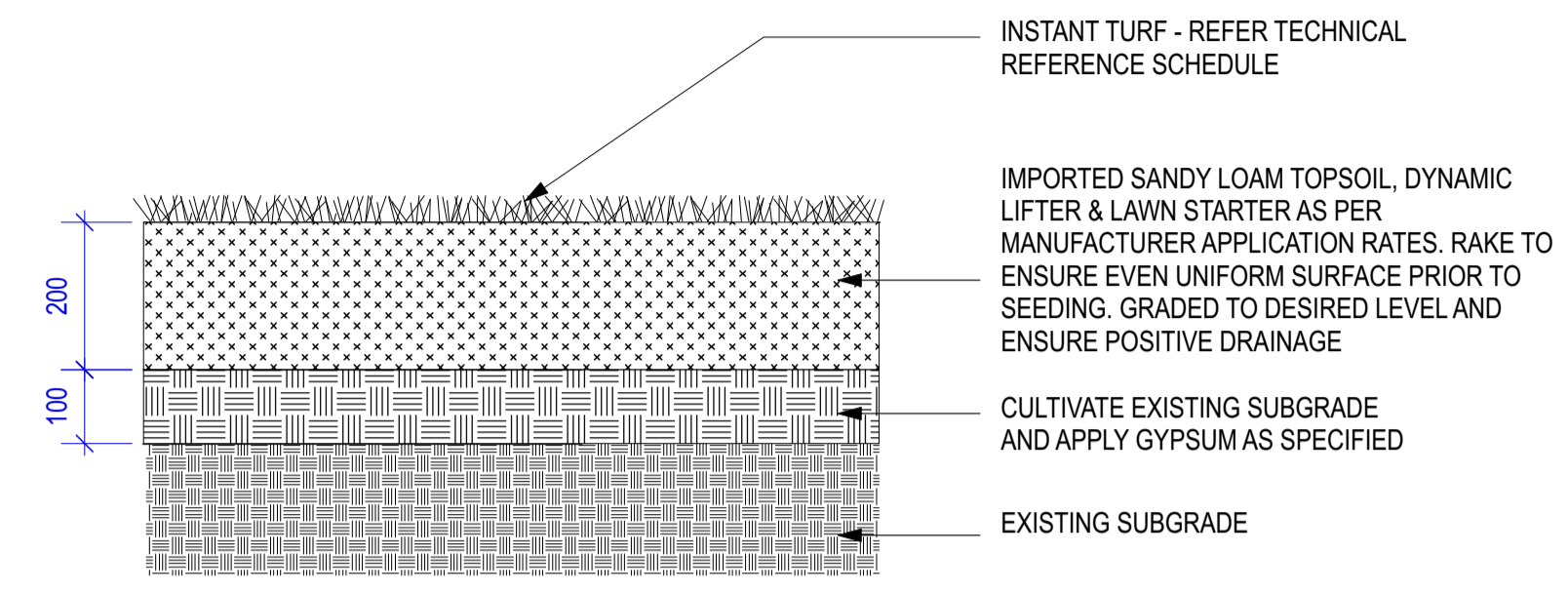
FOR TENDER



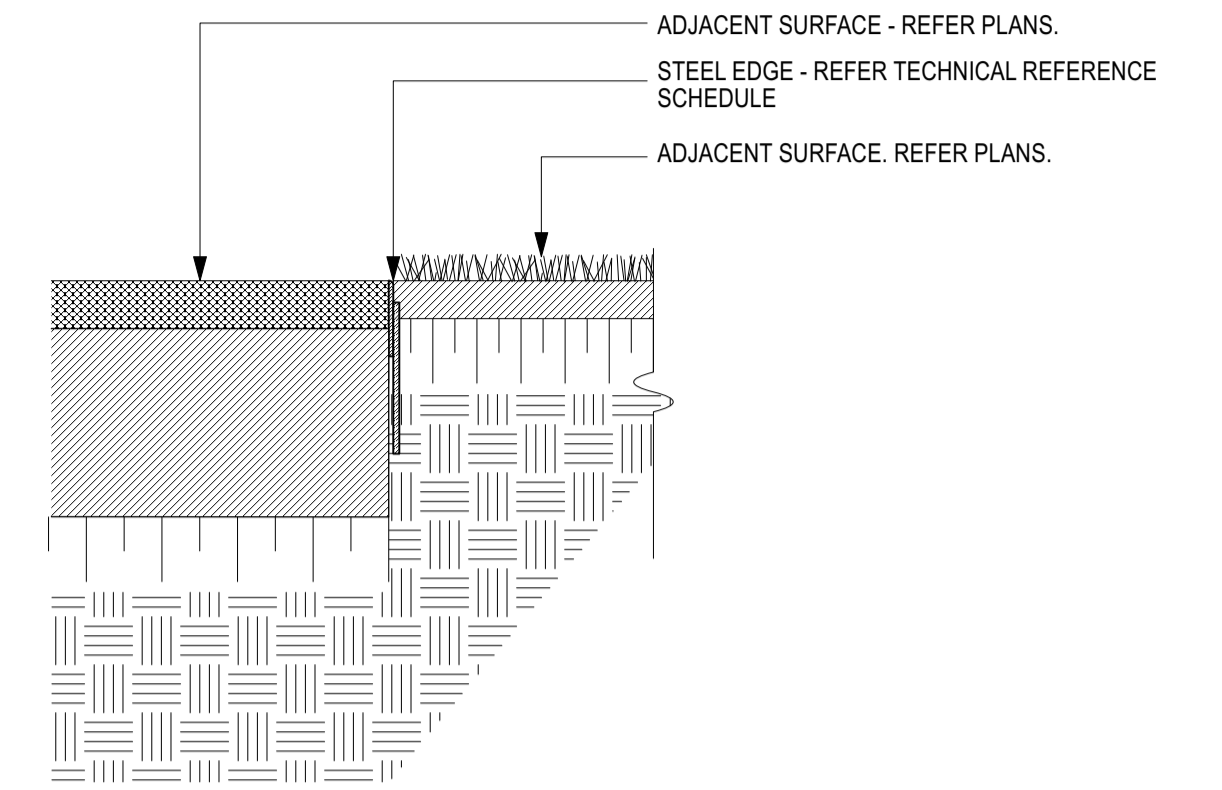
1 TYPICAL CONCRETE PAVING (PV1.1) DETAIL
Scale: 1:10



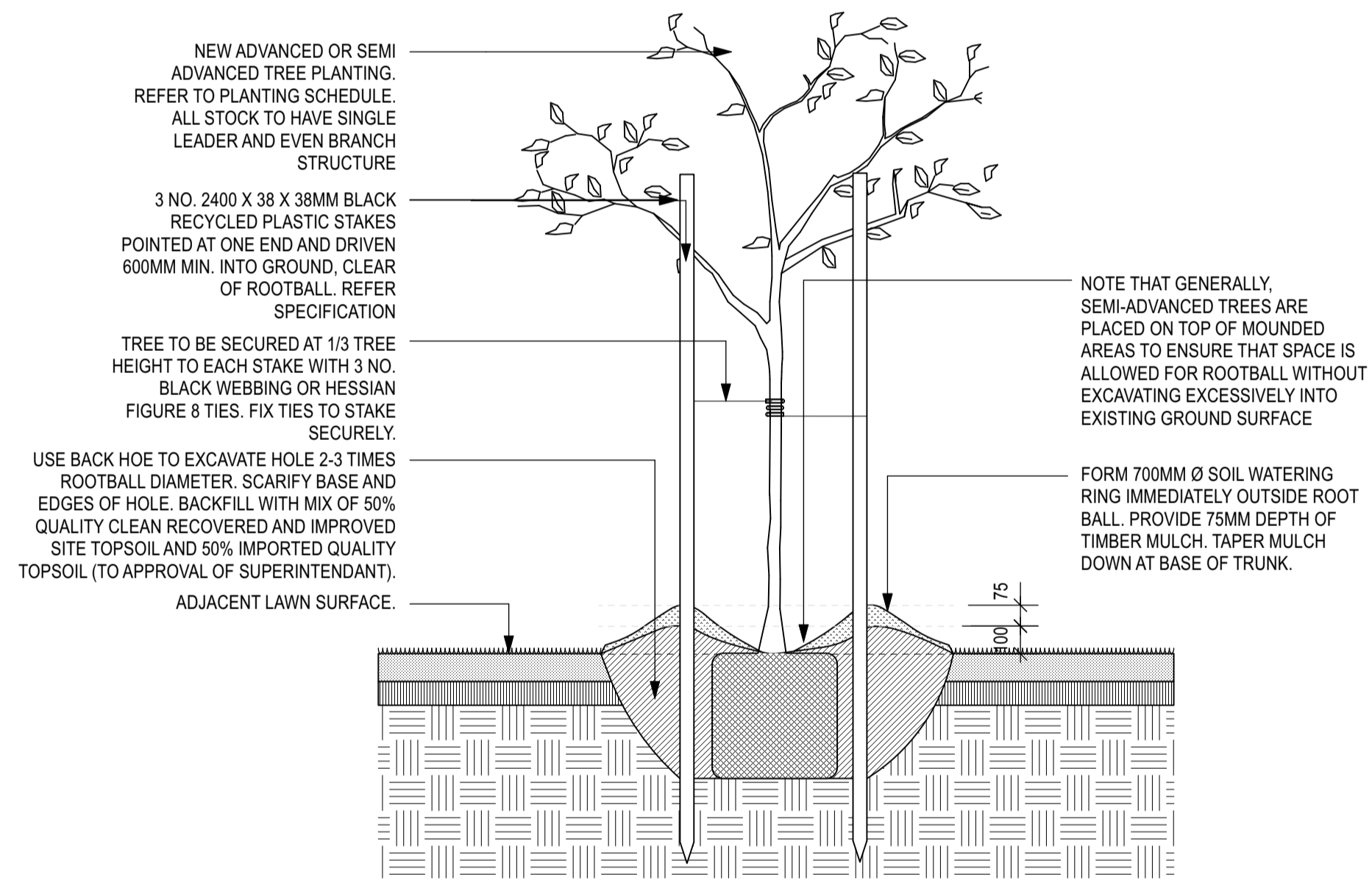
2 SYNTHETIC TURF (PV2.1) DETAIL
Scale: 1:10



3 INSTANT TURF (GR1.1) DETAIL
Scale: 1:10



4 TYPICAL STEEL EDGE (LE1.1) DETAIL
Scale: 1:10

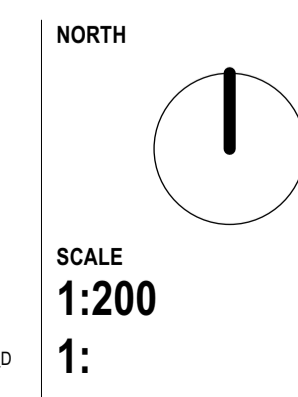


5 TREE IN LAWN DETAIL
Scale: 1:20

FOR TENDER

NO.	DATE	REVISION	BY	NO.	DATE	ISSUE	BY
2	29/10/21	TENDER ISSUE	TB				
1	22/10/21	DRAFT TENDER ISSUE	TB				

DRAWN BY	
CHECKED BY	
PLOT DATE	29/10/21
CAD FILE NAME	21045_Landscape_Details.wxd



PROJECT
21045
North Richmond Housing Estate -
Landscape & Greening

ADDRESS
Elizabeth & Highett St, North Richmond
VIC

DRAWING NO.
LD7.2

DRAWING NAME
Landscape Details 02

REV #

