

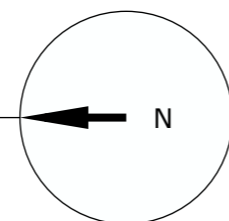
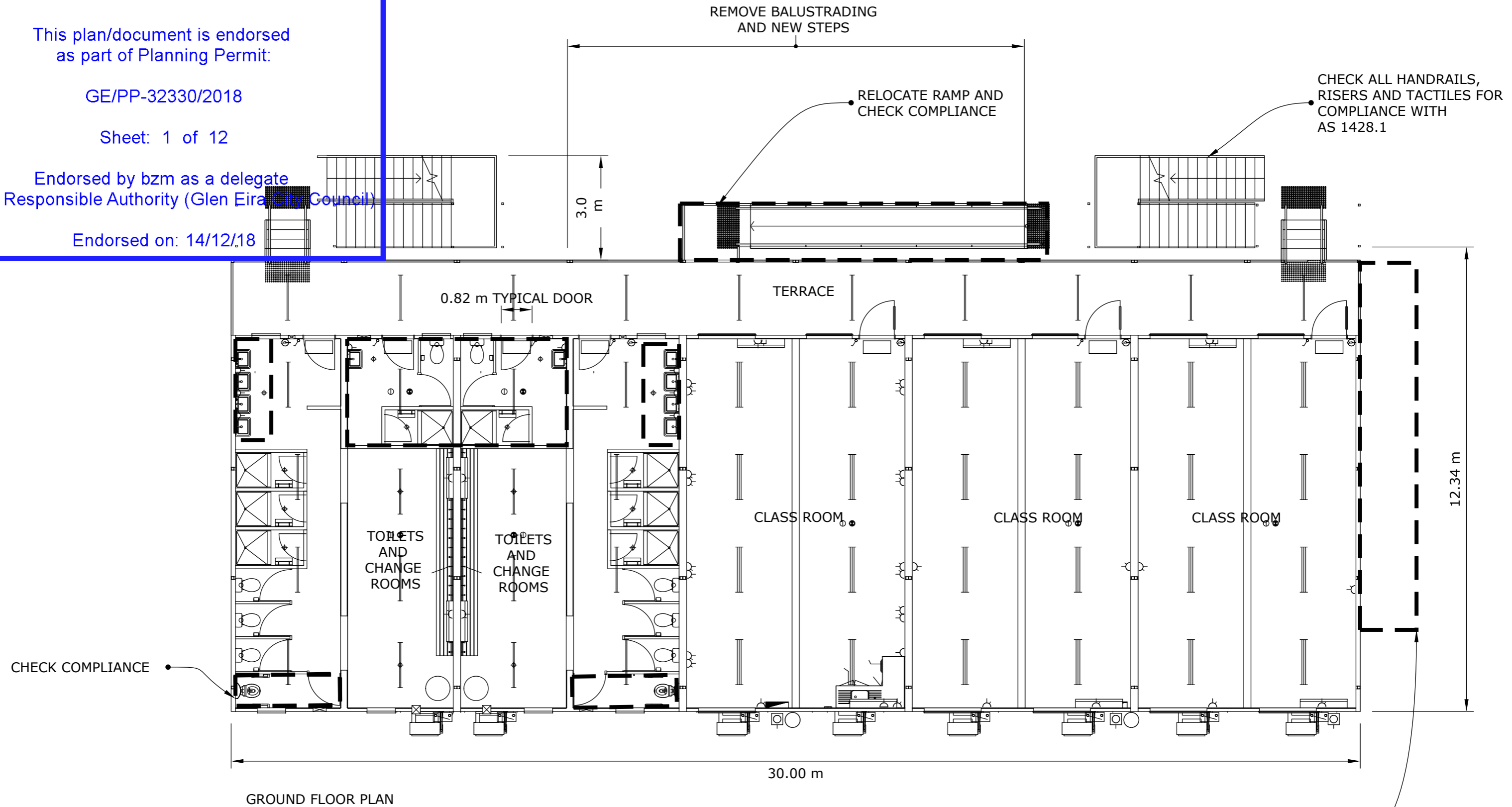
This plan/document is endorsed
as part of Planning Permit:

GE/PP-32330/2018

Sheet: 1 of 12

Endorsed by bzm as a delegate
of the Responsible Authority (Glen Eira City Council)

Endorsed on: 14/12/18



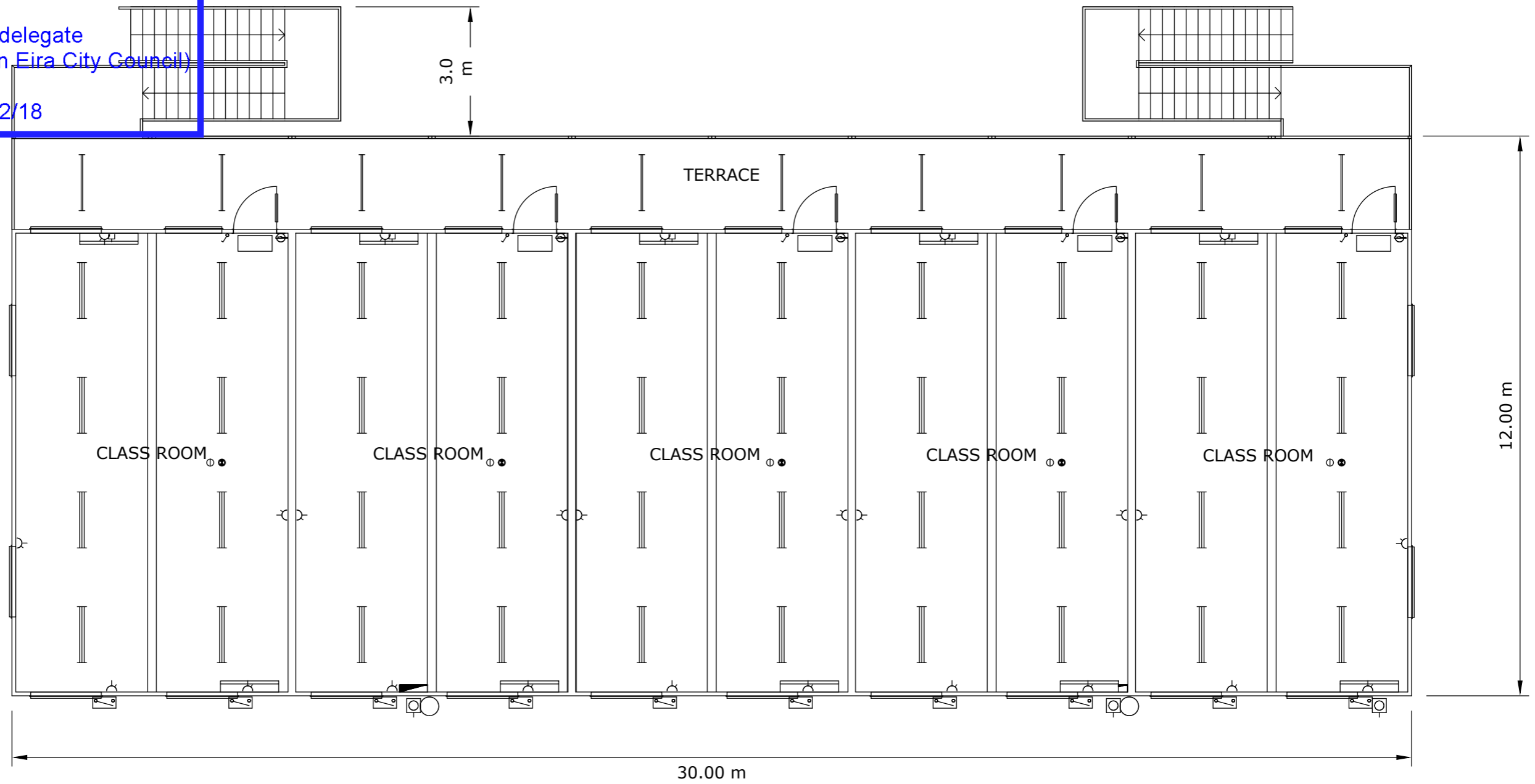
This plan/document is endorsed
as part of Planning Permit:

GE/PP-32330/2018

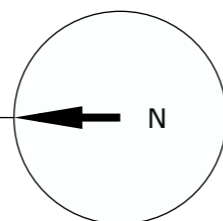
Sheet: 2 of 12

Endorsed by bzm as a delegate
of the Responsible Authority (Glen Eira City Council)

Endorsed on: 14/12/18



FIRST FLOOR PLAN



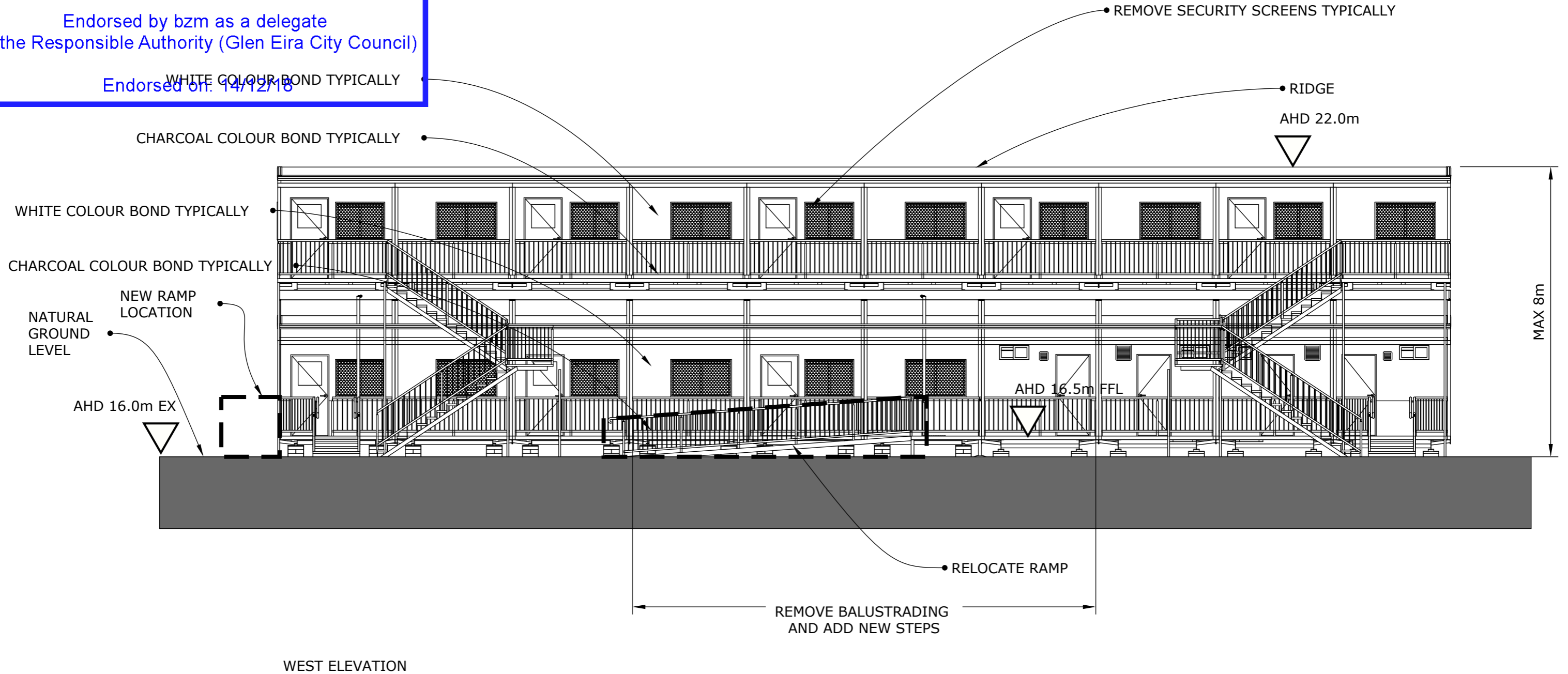
This plan/document is endorsed
as part of Planning Permit:

GE/PP-32330/2018

Sheet: 3 of 12

Endorsed by bzm as a delegate
of the Responsible Authority (Glen Eira City Council)

Endorsed on: 14/12/18



This plan/document is endorsed
as part of Planning Permit:

GE/PP-32330/2018

Sheet: 4 of 12

Endorsed by bzm as a delegate
of the Responsible Authority (Glen Eira City Council)

WHITE COLOUR BOND TYPICALLY
Endorsed on: 14/12/18

CHARCOAL COLOUR BOND TYPICALLY

WHITE COLOUR BOND TYPICALLY

CHARCOAL COLOUR BOND TYPICALLY

NATURAL
GROUND
LEVEL

PRIOR TO REMOVE SECURITY
SCREENS TYPICALLY CHECK
SILL HIEGHT FOR SAFETY
COMPLIANCE.

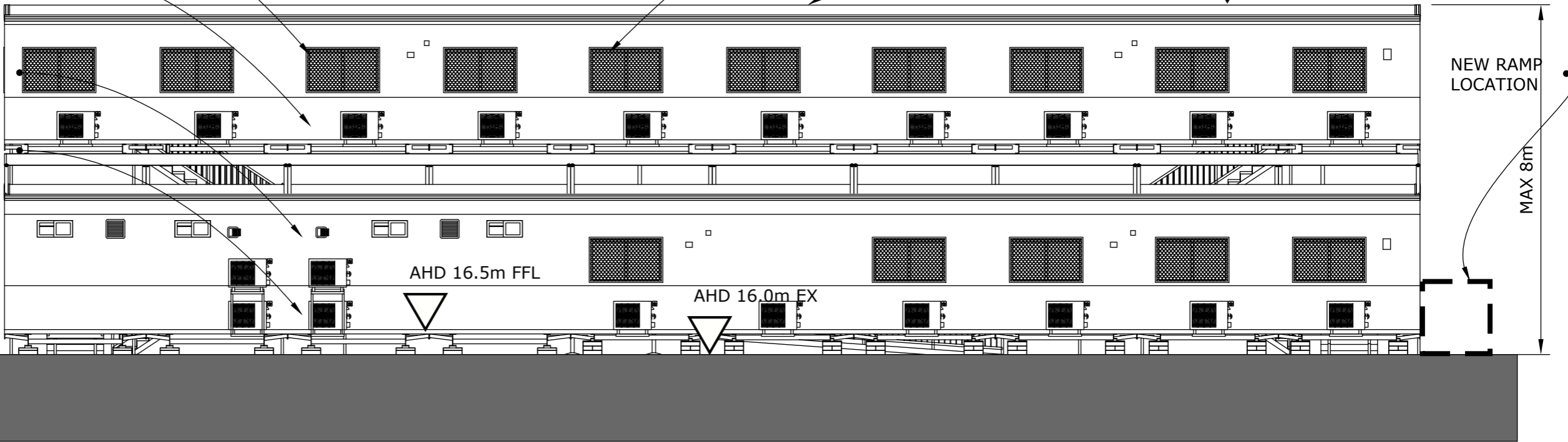
RIDGE
AHD 22.0m

NEW RAMP
LOCATION

MAX 8m

AHD 16.5m FFL

AHD 16.0m EX



FURNEAUX GROVE ELEVATION

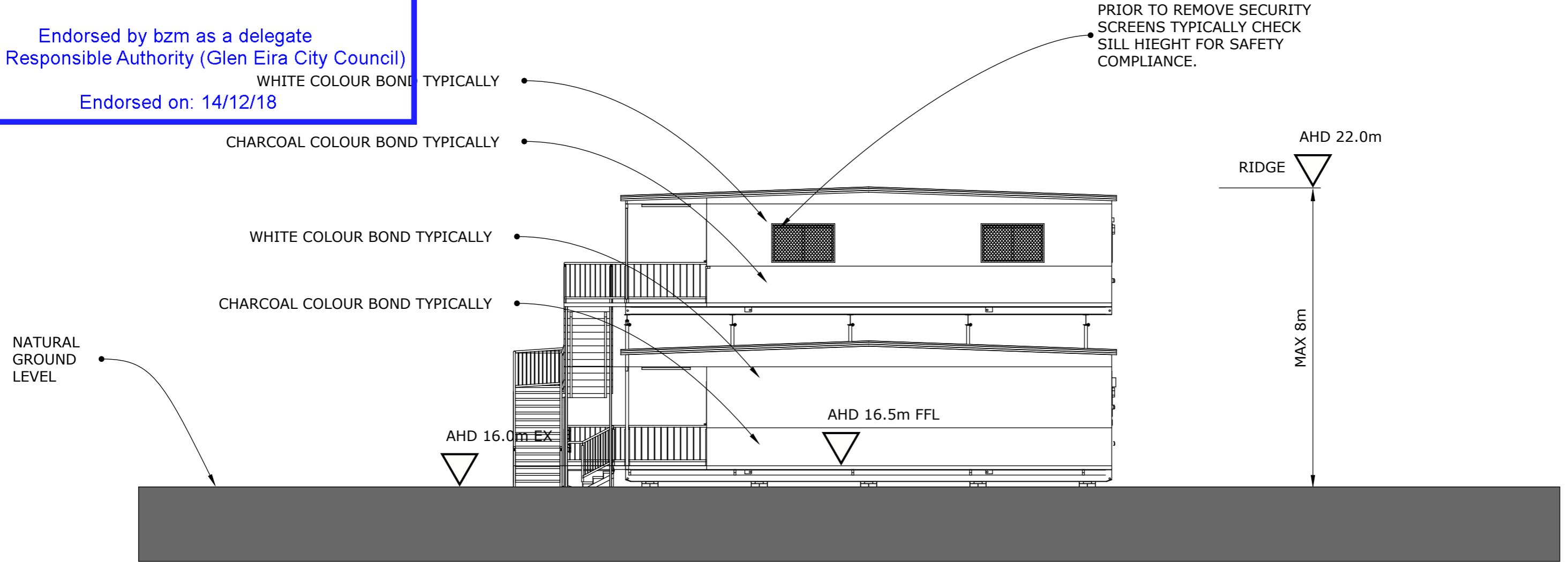
This plan/document is endorsed
as part of Planning Permit:

GE/PP-32330/2018

Sheet: 5 of 12

Endorsed by bzm as a delegate
of the Responsible Authority (Glen Eira City Council)

Endorsed on: 14/12/18



LOCH STREET ELEVATION

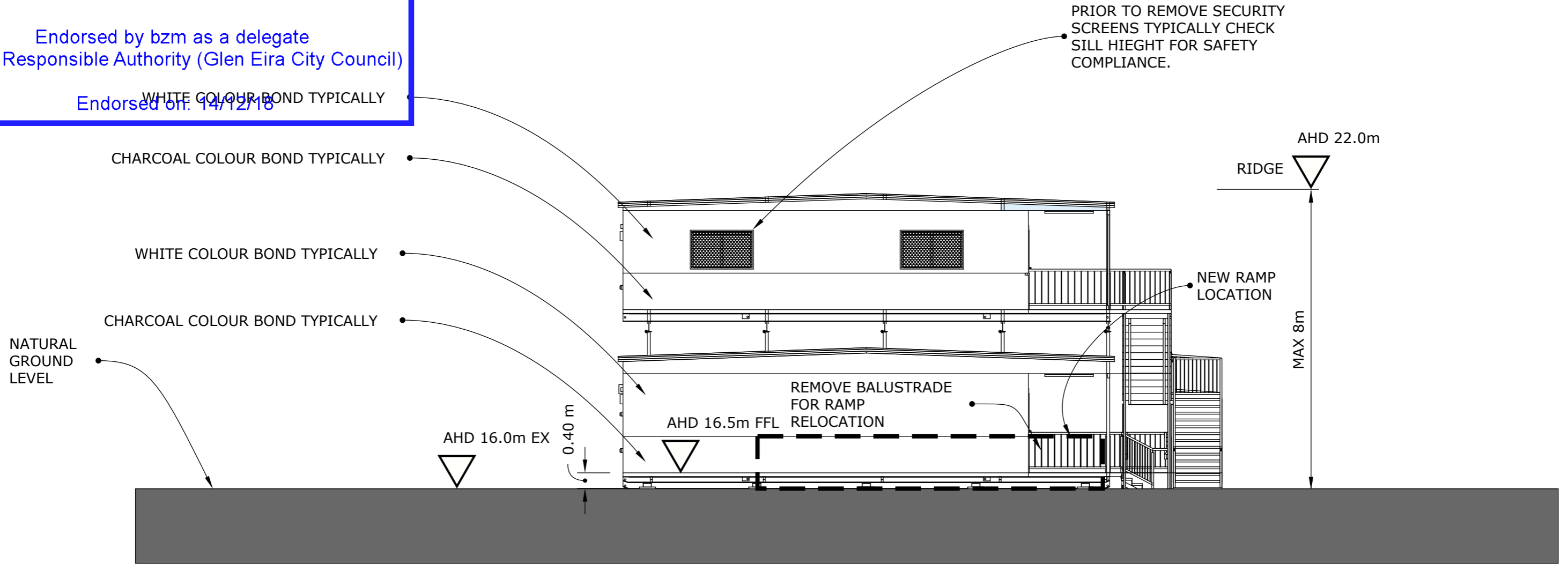
This plan/document is endorsed
as part of Planning Permit:

GE/PP-32330/2018

Sheet: 6 of 12

Endorsed by bzm as a delegate
of the Responsible Authority (Glen Eira City Council)

Endorsed on: 14/12/18



SOUTH ELEVATION

Drawings for Planning Application

PROJECT CAULFIELD GRAMMAR SCHOOL 2 FURNEAUX GROVE ST KILDA EAST

DRAWING ELEVATION

**DRAWINGS SUPPLIED BY ATCO
PROPOSED NEW CLASSROOMS**

SCALE 1:100 @ A3

14 NOV 2018

EX 6

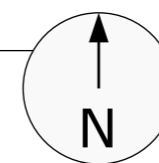
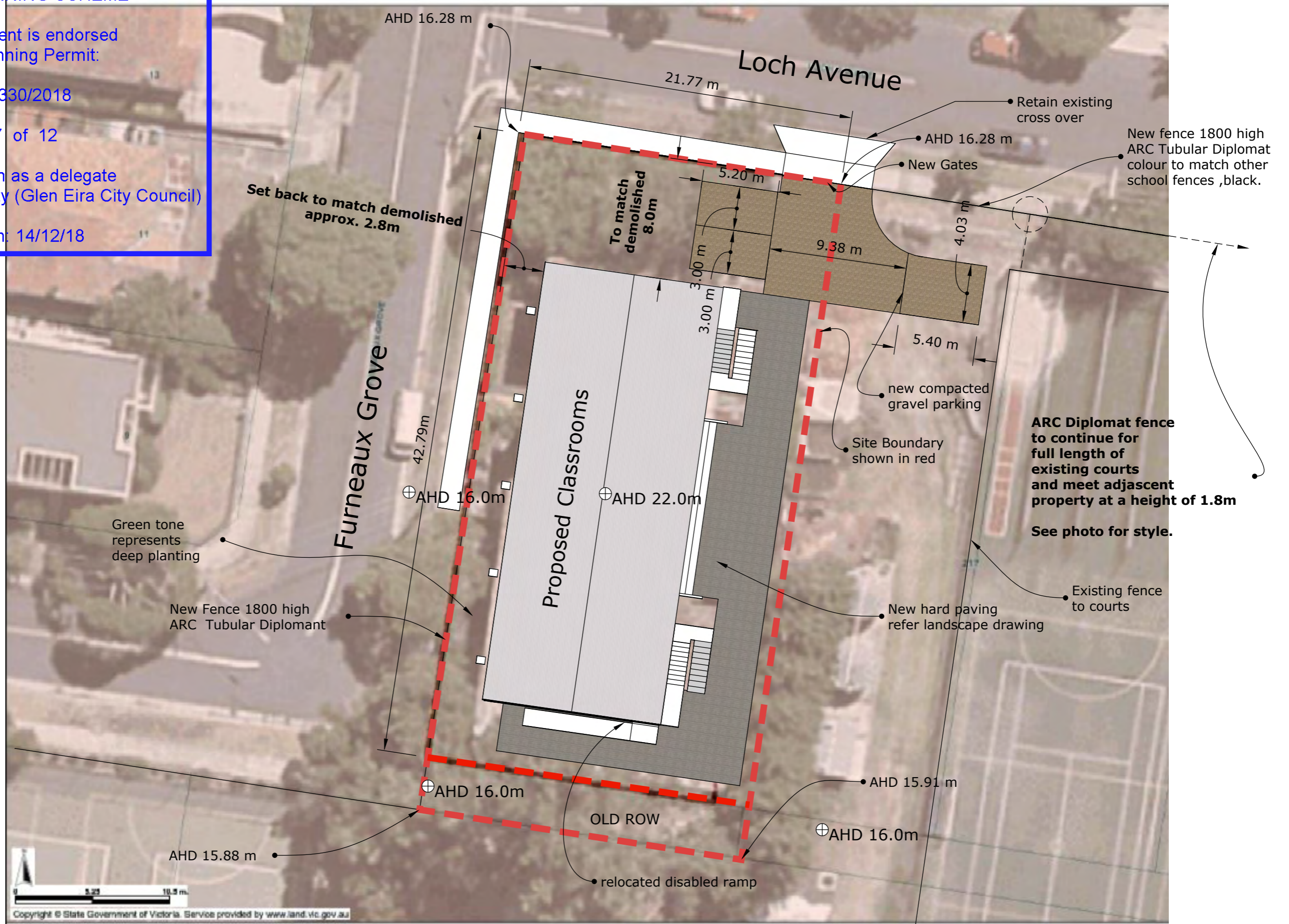
This plan/document is endorsed
 as part of Planning Permit:

GE/PP-32330/2018

Sheet: 7 of 12

Endorsed by bzm as a delegate
 of the Responsible Authority (Glen Eira City Council)

Endorsed on: 14/12/18



This plan/document is endorsed
as part of Planning Permit:

GE/PP-32330/2018

Sheet: 8 of 12

Endorsed by bzm as a delegate
of the Responsible Authority (Glen Eira City Council)

Endorsed on: 14/12/18

Loch Avenue

Furneaux Grove

Site
Boundary

Planning Map
2 Furneaux grove

Copyright © State Government of Victoria. Service provided by www.land.vic.gov.au

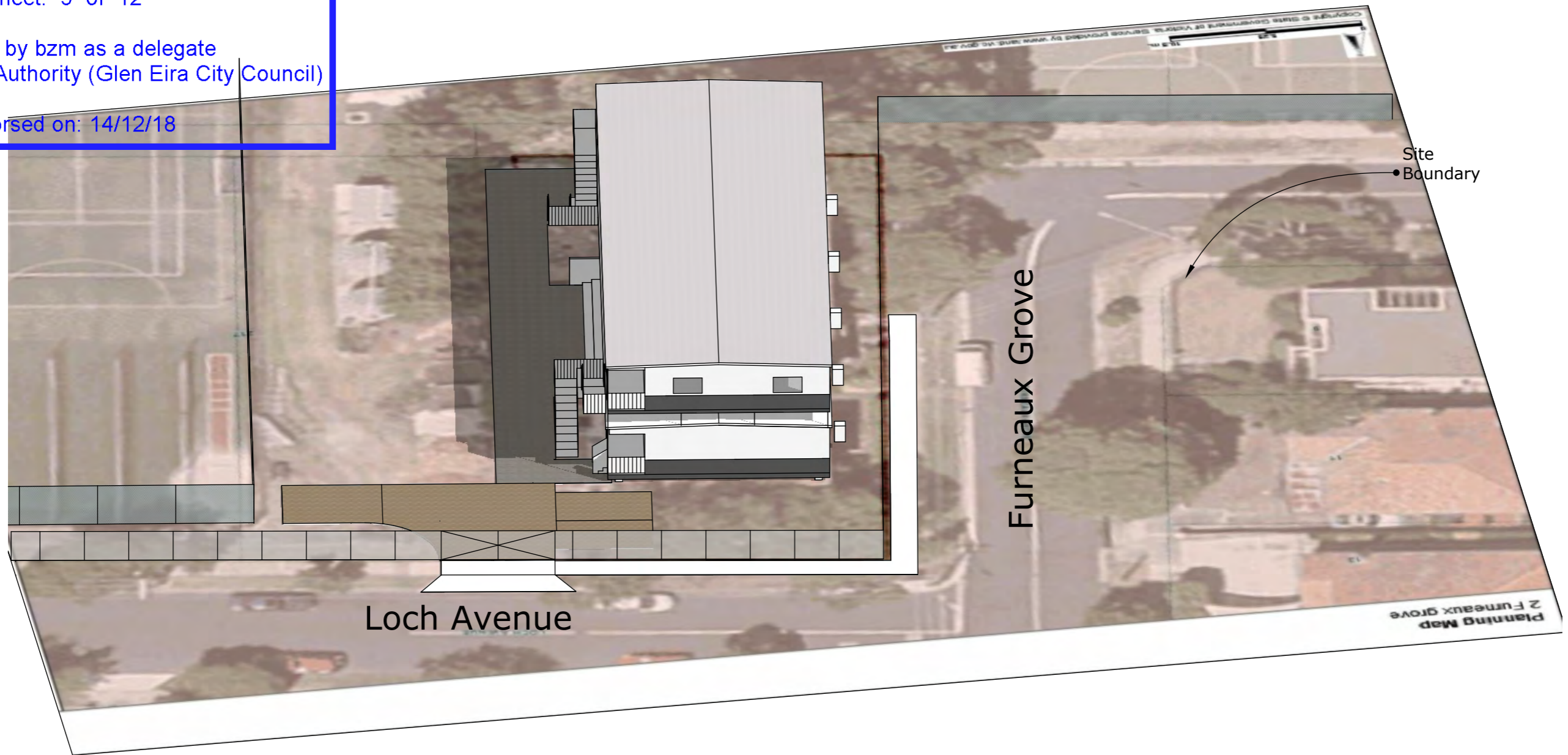
This plan/document is endorsed
as part of Planning Permit:

GE/PP-32330/2018

Sheet: 9 of 12

Endorsed by bzm as a delegate
of the Responsible Authority (Glen Eira City Council)

Endorsed on: 14/12/18



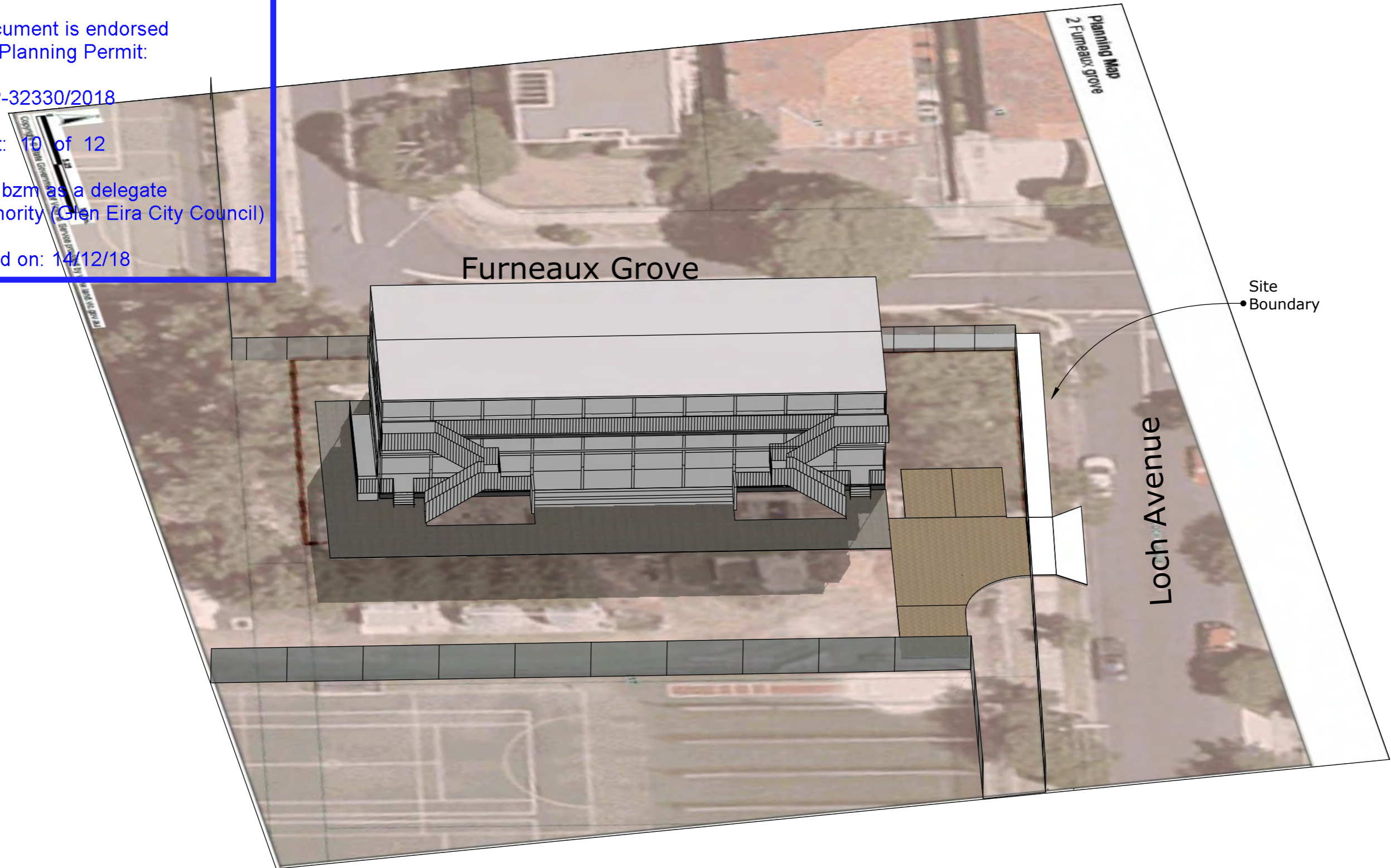
This plan/document is endorsed
as part of Planning Permit:

GE/PP-32330/2018

Sheet: 10 of 12

Endorsed by bzm as a delegate
of the Responsible Authority (Glen Eira City Council)

Endorsed on: 14/12/18



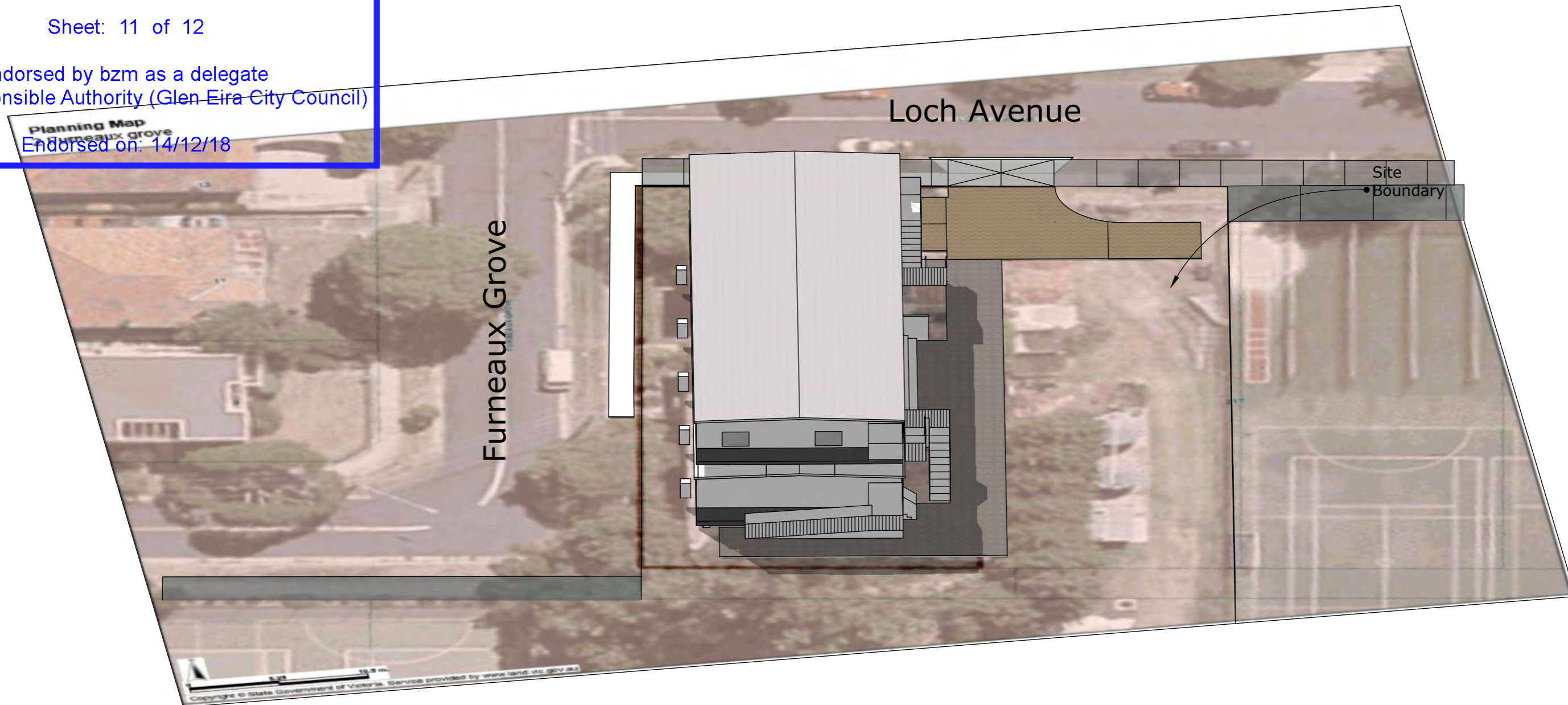
This plan/document is endorsed
as part of Planning Permit:

GE/PP-32330/2018

Sheet: 11 of 12

Endorsed by bzm as a delegate
of the Responsible Authority (Glen Eira City Council)

Planning Map
of Furneaux Grove
Endorsed on: 14/12/18



PLANNING AND ENVIRONMENT ACT 1987 GLEN EIRA PLANNING SCHEME

This plan/document is endorsed
as part of Planning Permit:



GE/PP-32330/2018

[STORE LOCATIONS](#) [RESIDENTIAL FENCING](#) [INDUSTRIAL FENCING](#) [SAFETY](#) [ABOUT ARC](#) [CONTACT US](#)

Search here...

[REQUEST A FREE QUOTE](#)

1800 336 237

Sheet: 12 of 12

Endorsed by bzm as a delegate
of the Responsible Authority (Glen Eira City Council)

Endorsed on: 14/12/18

Tubular - Diplomat™

[Share](#)

Product Information

Material:	Steel
Applications:	Schools, Business, Railways
Quality:	Quality Endorsed
Finishes:	Galvanised Steel
Design options:	Through Rail
Accessories and fittings:	Flanges - standard fixing to posts by 40mm x 40mm steel rail flanges and tek screws or anti-theft screws. They are anti tamper and provide you with peace of mind. They can be supplied on request. All gates comes complete with drop bolts, lugs, chain, striker and ball bearing hinges.

Need a quote or more information?

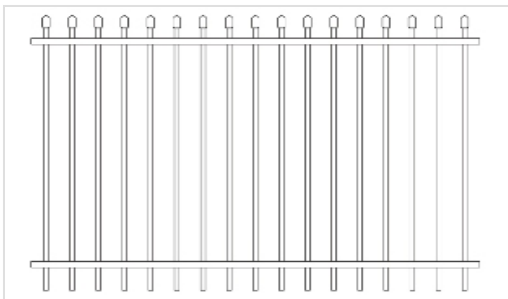
Call our team of fencing experts or send us a request for quote.

Phone: 1800 336 237

[REQUEST A FREE QUOTE](#)

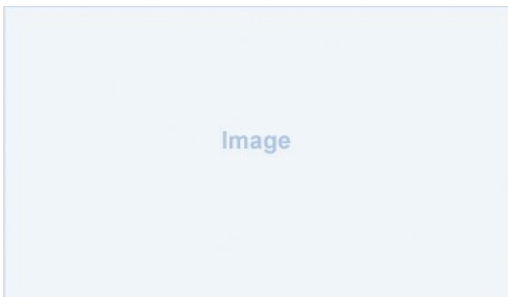
Sliding Gates can be priced on application. Double Gates are available in opening sizes up to 8000mm on request.

Standard Sizes



PANEL HEIGHTS (MM)	1800, 2100 or 2400
PANEL WIDTHS (MM)	2400
HORIZONTAL RAILS (MM)	40 x 40 x 1.6
VERTICAL PICKETS (MM)	25 x 25 x 1.2
TUBE SPACING	140mm Centres

Posts



INGROUND POST HEIGHT (MM)	From 2700 - 3600
STANDARD POSTS SPECS (MM)	65 x 65 x 2.0

Colours