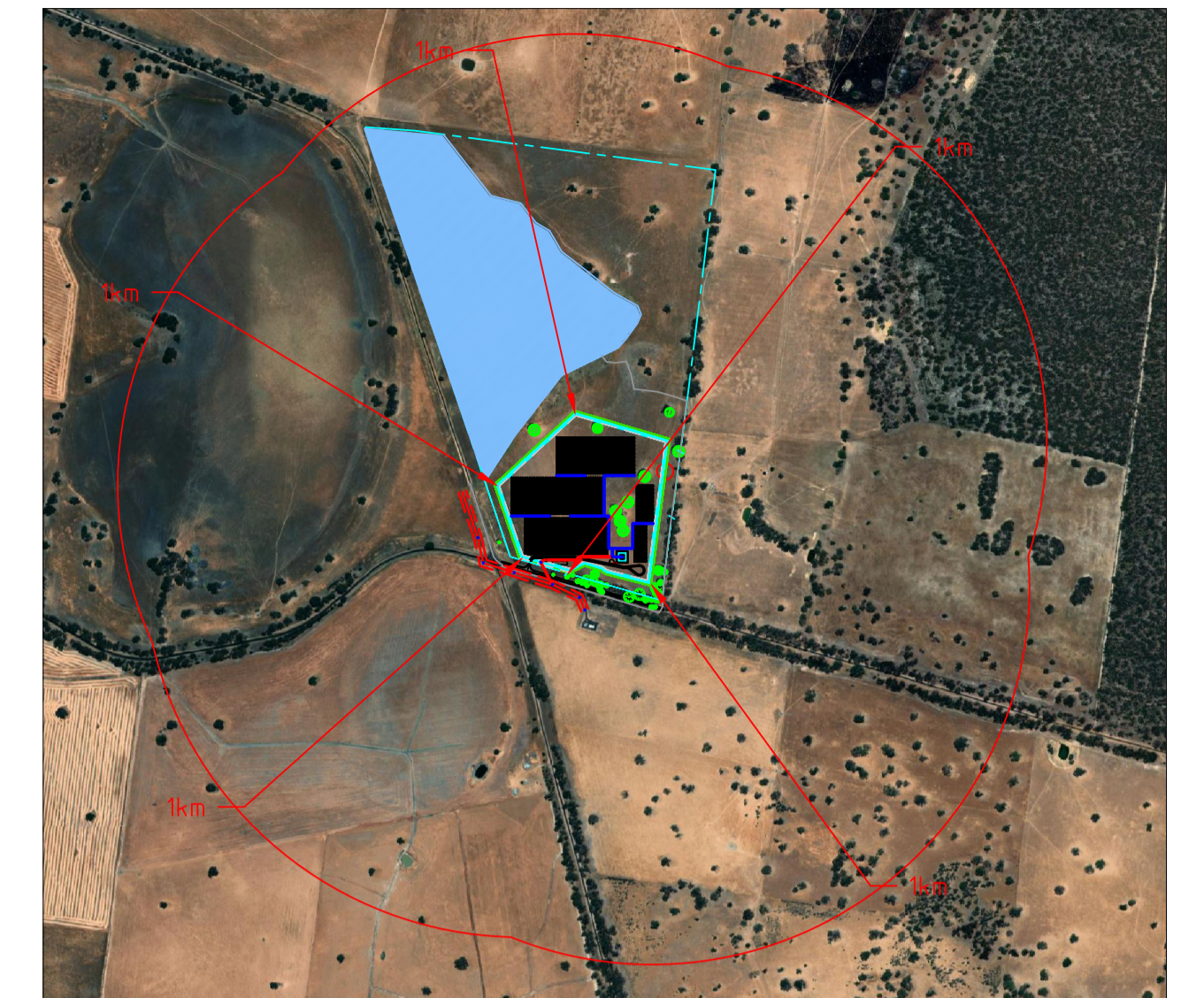


ABORIGINAL CULTURAL HERITAGE SENSITIVITY

FENCE

ADVERTISED PLAN



LOCATION PLAN (N.T.S)

PERIPHERAL LANDSCAPING BUFFER

NOTES

1. ACTUAL DIMENSIONS AND CLEARANCES MAY VARY SUBJECT TO SITE CONDITIONS.
2. DIMENSIONS OF ELECTRICAL EQUIPMENT ARE INDICATIVE ONLY. ACTUAL DIMENSIONS TO BE CONFIRMED.
3. EXISTING POWERCOR 22kV POLE IS FOR ILLUSTRATION ONLY. ACTUAL POSITION IS SUBJECT TO THE ACTUAL MEASUREMENT ON SITE.
4. SITE STORAGE AND AMENITY FACILITIES TO BE ON SITE ONLY DURING CONSTRUCTION PHASE. NO PERMANENT BUILDINGS TO BE KEPT ON SITE AFTER CONSTRUCTION COMPLETED.
5. TREES (RIVER RED GUM TREE) TO BE RETAINED ON SITE PER INDICATION.
6. A AT LEAST 60m LONG HOSE IS INCLUDED WITH THE HYDRANT.
7. THE MAXIMUM STORAGE CAPACITY AND TYPE OF BATTERIES ARE 11,000 MVA AND LPF, RESPECTIVELY.
8. THE MAXIMUM VOLTAGE OF THE POWER LINE IS 22kV.

LEGEND

- PROPOSED UNDERGROUND HV CABLE
- PROPOSED UNDERGROUND DC CABLE
- PROPOSED OVERHEAD HV CABLE
- EXISTING POWER LINE WITH EASEMENT

SYSTEM SPECIFICATIONS				
DC	6.17	MW	TOTAL MODULES	10287
MODULE CAPACITY	600	W	MODULES PER STRING	27
NUMBER OF INVERTERS	1	-	NUMBER OF STRINGS	381
INVERTER MODEL	SG4950-HV-MV	-	MODULE MODEL	LR5-72HTH-600M
NUMBER OF BATTERIES	4	-	BATTERY MODEL	ST-2752UX

FOR INFORMATION

This copied document to be made available for the sole purpose of enabling its consideration and review as part of a planning process under the Planning and Environment Act 1987. The document must not be used for any purpose which may breach any copyright

PROPERTY BOUNDARY

ALTERNATIVE ACCESS GATE

EXISTING 22kV LINE WITH EASEMENT

ACCESS GATE

HV SWITCHBOARD

EXISTING POWERCOR 22kV POLE (NOTE 3)

SITE AMENITIES AND STORAGE AREA (NOTE 4)

28.8kL WATER TANK

HYDRANT (NOTE 8) & HARDSTAND (8m x 6m)

PROPERTY BOUNDARY

TREES TO BE RETAINED (NOTE 5)

10m APZ FOR BATTERY

INVERTER STATION

FENCE

4 LFP BATTERIES
11,000 MVA MAXIMUM STORAGE CAPACITY

- LEGEND
- PROPOSED PV ARRAY
 - SECURITY FENCE
 - PROPERTY BOUNDARY
 - TREE WITH 15m PROTECTION ZONE
 - 10m WIDE ASSET PROTECTION ZONE

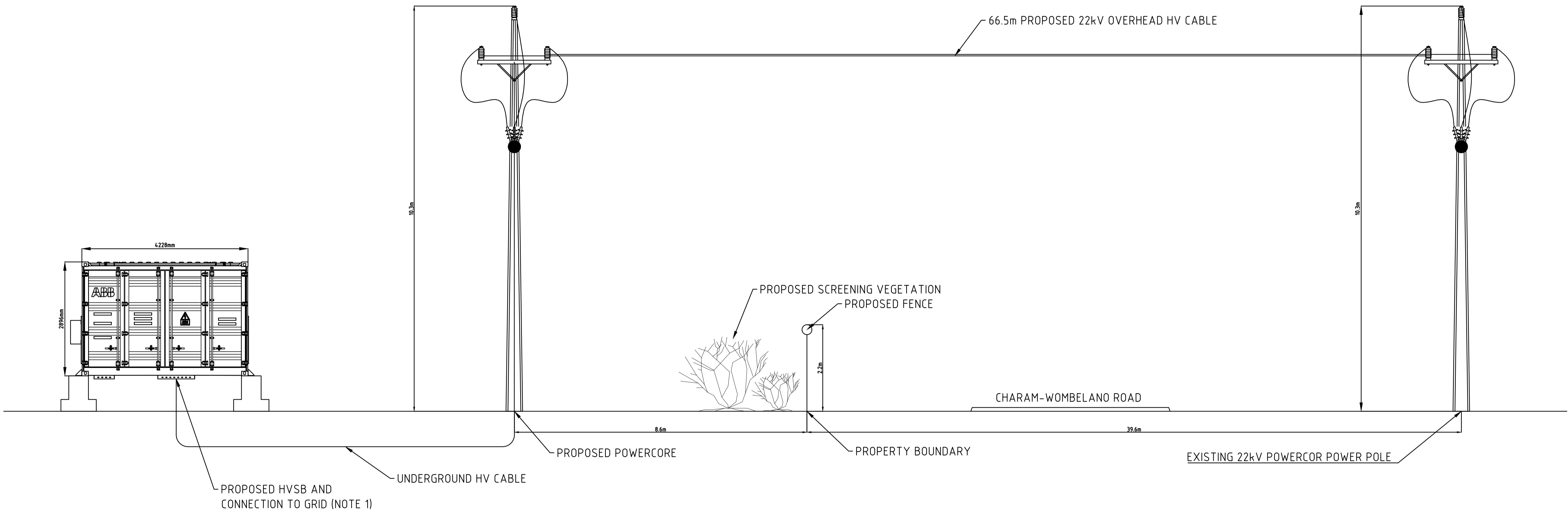
No	DATE	DRN	CHK	ENG	Q.A.	PROJECT	DESCRIPTION	NUMBER	TITLE
F	16/08/23	DS	ACE	DS	ACE		UPDATE TPZ		
E	19/07/23	DS	ACE	DS	ACE		UPDATE INVERTER MODEL		
J	22/03/24	DS	ACE	DS	ACE		ADD OVERHEAD LINE		
I	06/02/24	DS	ACE	DS	ACE		UPDATE DETAILS		
H	20/09/23	DS	ACE	DS	ACE		UPDATE TPZ		
G	05/09/23	MG	ACE	MG	ACE		UPDATE TPZ & TRACKER LAYOUT		
REVISION							REFERENCE DRAWINGS		



GOROKE-HARROW ROAD, CHARAM VIC
4.95 MW PV & BESS EXPORT SYSTEM
SITE PLAN

DATE: 22/03/24	DRN: DS	CHK: ACE	ENG: DS	Q.A: ACE	SCALE: 1:1500
PROJ No	DRG No				REV J

ADVERTISED PLAN



This copied document to be made available for the sole purpose of enabling its consideration and review as part of a planning process under the Planning and Environment Act 1987. The document must not be used for any purpose which may breach any copyright

NOTE:
1. DIMENSIONS OF THE PROPOSED HVSB TO BE APPROX. 4.2m(W) x 2.9m(H) x 2.7m (L). FINAL DIMENSIONS TBA DURING DETAILED DESIGN.

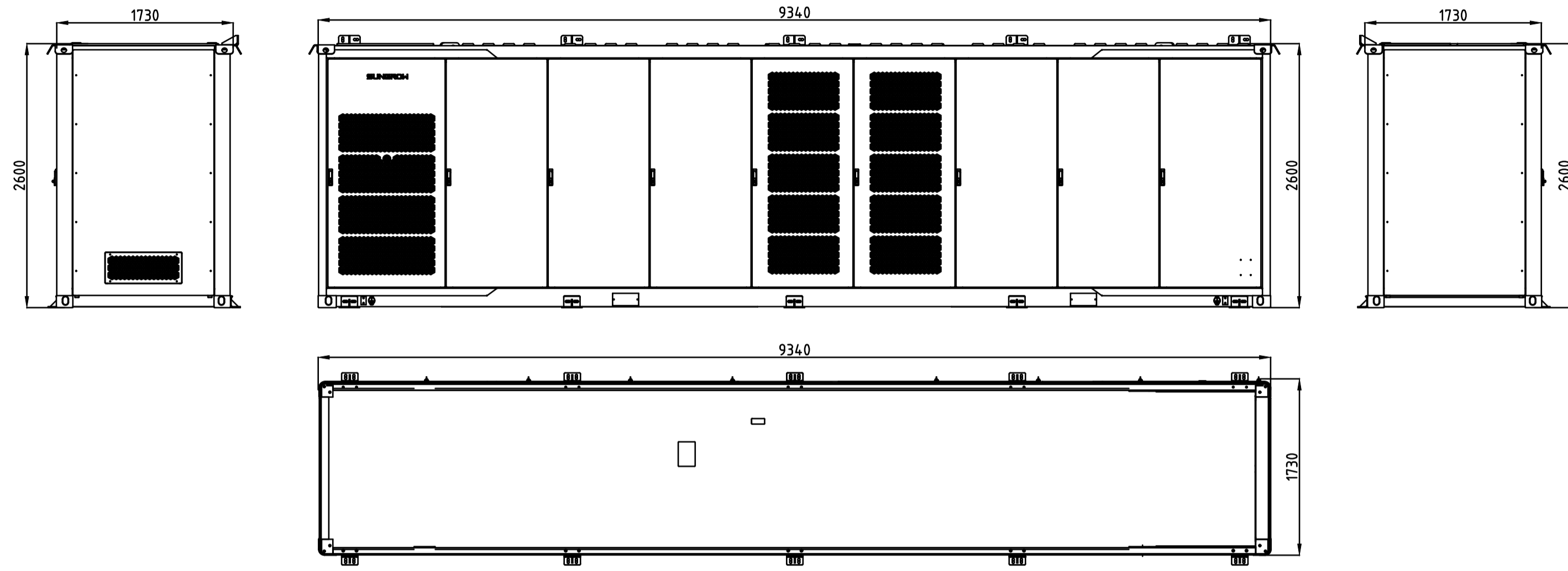
FOR INFORMATION

No	DATE	DRN	CHK	ENG	Q.A.	PROJECT	DESCRIPTION	NUMBER	TITLE
A	13/02/24	D.S.	ACE	D.S.	ACE		ISSUED FOR INFORMATION		
REVISION							REFERENCE DRAWINGS		

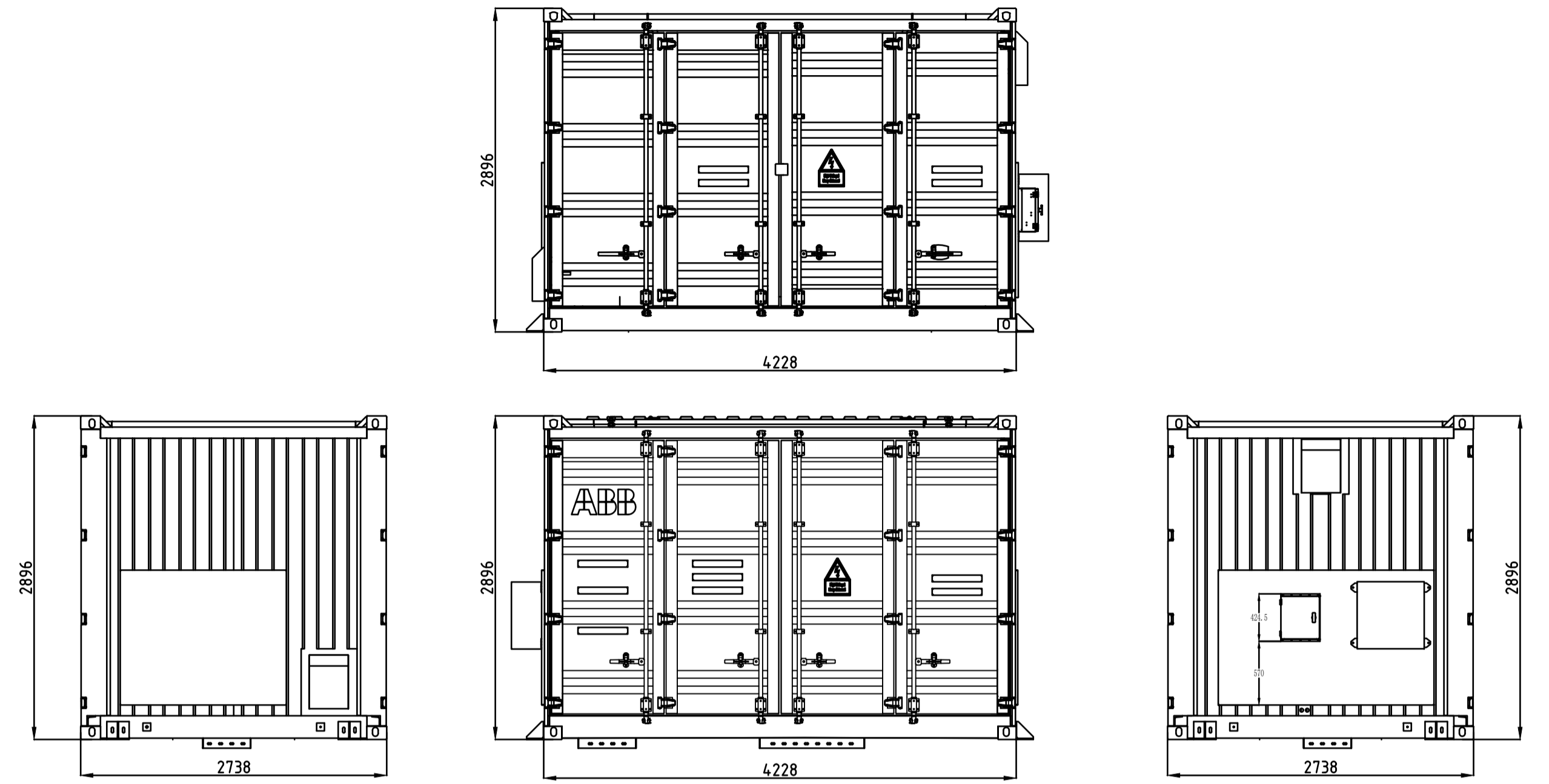


GOROKE-HARROW ROAD, CHARAM VIC 4.95MW PV EXPORT SYSTEM NETWORK CONNECTION ELEVATION PLAN									
DATE: 13/02/24	DRN: D.S.	CHK: ACE	ENG: D.S.	Q.A: ACE	SCALE: NTS				
PROJ No	DRG No				REV	A			

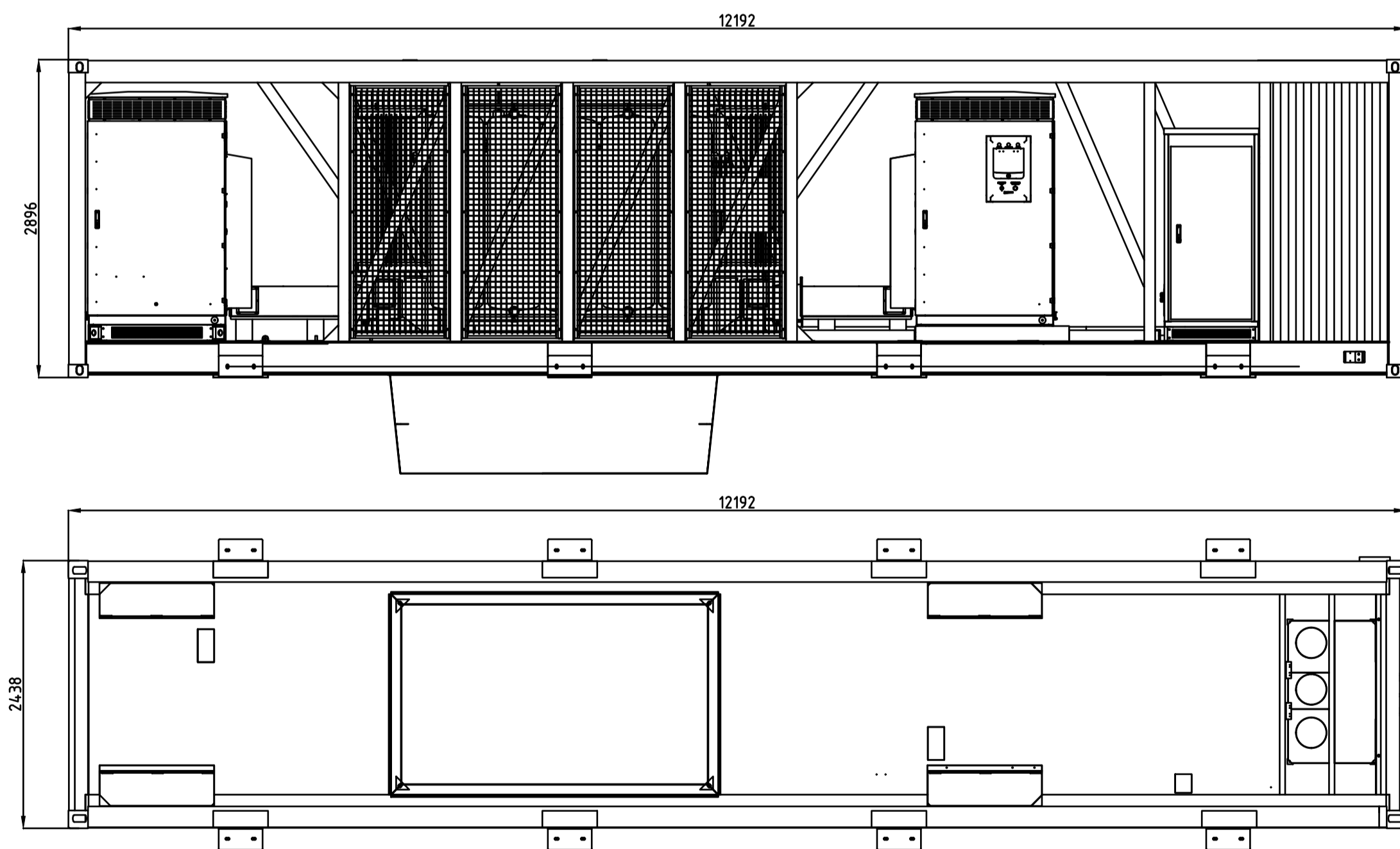
This copied document to be made available for the sole purpose of enabling its consideration and review as part of a planning process under the Planning and Environment Act 1987. The document must not be used for any purpose which may breach any copyright



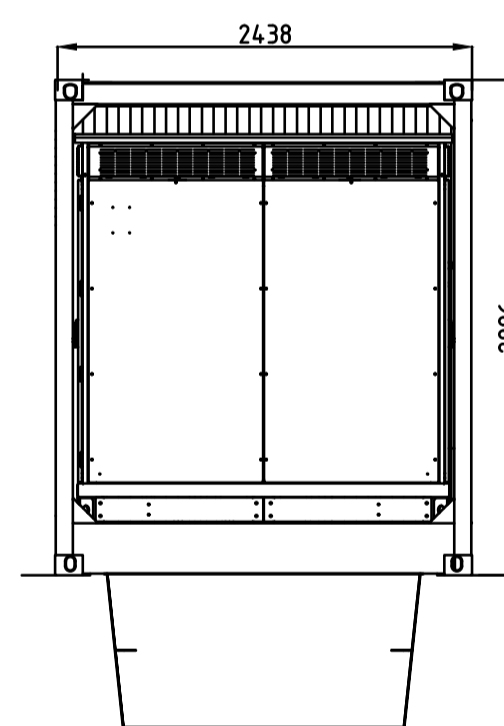
TYPICAL BATTERY ELEVATION



TYPICAL HV SWITCHBOARD ELEVATION



TYPICAL INVERTER ELEVATION



- NOTES:
1. ALL DIMENSIONS ARE IN MILLIMETERS UNLESS OTHERWISE NOTED.
 2. ACTUAL DIMENSIONS OF THE EQUIPMENT MAY VARY BASED ON THE ACTUAL DIMENSIONS OF THE EQUIPMENT MAY VARY BASED ON THE SPECIFICATIONS OF EQUIPMENT MANUFACTURERS.
 3. THE MAIN COLOUR OF ALL EQUIPMENT IS WHITE.

ADVERTISED PLAN

FOR INFORMATION

No	DATE	DRN	CHK	ENG	Q.A.	PROJECT	DESCRIPTION	NUMBER	TITLE
A	08/11/23	D.S.	ACE	D.S.	ACE		ISSUED FOR INFORMATION		
REVISION REFERENCE DRAWINGS									



GENERAL SOLAR FARM
TYPICAL ELECTRICAL EQUIPMENT ELEVATIONS

DATE: 08/11/23	DRN: D.S.	CHK: ACE	ENG: D.S.	Q.A: ACE	SCALE: NTS
PROJ No	DRG No				REV A