

This copied document to be made available for the sole purpose of enabling its consideration and review as part of a planning process under the Planning and Environment Act 1987. The document must not be used for any purpose which may breach any copyright



Tree Care Consulting
'Sustainable planning solutions'

Tree/s Location: Goroke-Harrow Road, Charam, VIC 3318

Completed for: Chris Smith & Associates

Inspection date: 18 September 2023

Date of report: 21 September 2023

Prepared by: Jimmy Ross, Consulting Arborist

Diploma of Arboriculture, Fairfield Polytechnic (Level 5)

Phone: 0415 944 987

Email: info@treecareconsulting.com.au

ACN: 637 683 339

ABN: 14 637 683 339



**ADVERTISED
PLAN**

This Tree Protection Management Plan is designed for the protection and preservation of eleven trees situated within the subject allotment (outside trees in groups/clusters protect trees within groups/clusters) and two trees within the road reserve for the construction of a mini solar farm and surrounding security fence (see Appendix C).

TPZ fencing must be installed 14 days prior to any demolition/construction.

The below document MUST be signed and dated at the completion of each task within provided columns. Documentation provided by the Project Arborist to the client at the completion of works must also be signed and certified.

Project Arborist: Jimmy Ross, consulting arborist from Tree Care Consulting- 0415 944 987

***Caution: failure to comply with this plan may result in Council enforcement action and/or stop work orders**

ADVERTISED PLAN

**This copied document to be made available
for the sole purpose of enabling
its consideration and review as
part of a planning process under the
Planning and Environment Act 1987.
The document must not be used for any
purpose which may breach any
copyright**

TREE PROTECTION PROJECT TASK LIST


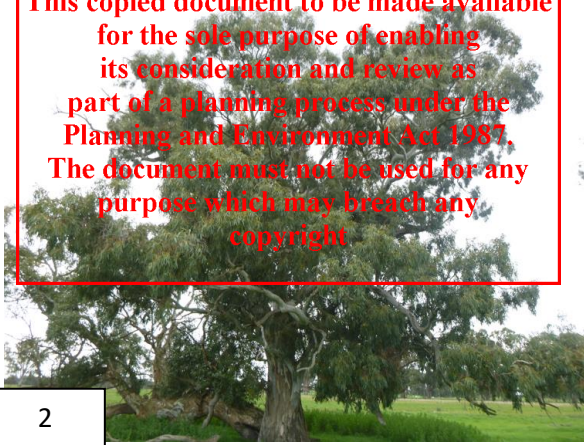

Timing	Task	Completion of task date & sign-off
Pre-Demolition/ Construction	<p><u>Appoint the Project Arborist</u> Appoint the Project Arborist to action this Tree Protection Management Plan. Provide at least fourteen days' notice of the works commencement date. Provide Project Arborist contact details to Council.</p> <p><u>TPZ Fencing within the Subject Allotment</u> Prior to commencement of works, erect TPZ fencing 14 days prior to any works, as depicted in Appendix C (TPMP).</p> <p>TPZ fencing must encompass as much of the calculated TPZ as practical as measured from the centre of the tree. TPZ fencing must be orange bunting flags with 1.8m star pickets placed every 3-4 metres. This will deter the entry of heavy equipment, vehicles, workers and the public into the Tree Protection Zone. Any alterations required to TPZ fencing must be authorised by the Project Arborist.</p> <p>Signs should be affixed to the fence at appropriate intervals and should be easily readable from a distance of 10 metres displaying the words: "TREE PROTECTION ZONE. NO ACCESS" or similar.</p> <p>All TPZ fencing must conform to AS4970 2009 Protection of Trees on Development Sites - see Appendix C.</p> <p><u>Arborist Sign Off</u> The Project Arborist must be notified by the Site Manager when the tree protection measures are in place. The Project Arborist must assess the protection measures and if satisfied, sign off the Tree Protection Management Plan and provide a Letter of Inspection before the commencement of either demolition or construction works.</p> <p>Works must not commence until this document is signed off.</p>	
Construction	<p><u>Temporary Access of Tree Protection Zone</u> If temporary machinery access is required within the TPZ, this must only occur after ground protection measures are in place. These works must be supervised by the Project Arborist (unless specified otherwise). The use of 75-100mm of mulch (not an aggregate base) overlaid by strapped planks or the like as per 4.5.3 AS4970 2009 Protection of Trees on Development Sites will be required. See Appendix C.</p>	

Timing	Task	Completion of task date & sign-off
<p>Post Construction</p>	<p><u>Excavation within Tree Protection Zone</u> Excavation must not occur within the Structural Root Zone of any tree retained.</p> <p>The Project Arborist must be on-site to supervise all excavation works within the calculated TPZ. This is essential if substantial roots (i.e., > 50 mm) are encountered and may require pruning. Inspection will need to take place by the Project Arborist to ascertain the impact on the trees and recommend follow up works if required.</p> <p>Any proposed works within the tree protection zones of any tree retained must be carried out by hand, and large roots (>50mm diameter) if encountered must be left intact. If any roots are to be cut by the Project Arborist, they must be cut cleanly to prevent infection or fungus entering the severed roots.</p> <p><u>Service Installation</u> Where underground services pass through the Tree Protection Zone, these must be underground bored at appropriate depths or hand excavated under the direct supervision of the Project Arborist. All access pits for bore machinery must be located outside of the TPZ unless installed by hand excavation, Air Spade or Hydro-vacuum. Excavation must be completed under the direct supervision of the Project Arborist.</p> <p><u>Removal of Tree Protection Fencing</u> TPZ fencing must remain in place until completion of works and certification of the TPMP by the Project Arborist.</p> <p><u>Landscape Works</u> Landscape works may proceed after TPMP certification and the TPZ fencing has been removed.</p> <p><u>Certification of Tree Protection</u> Certification that tree protection has remained in place for the entirety of the demolition & construction phase.</p> <p><u>Final Arborist Report/Certification</u> The Project Arborist must assess the tree for any changes to tree health as a result of the works period. If any changes are noted, a report must be provided to Council detailing tree health and viability and any remedial measures that may need to be applied.</p>	

This copied document to be made available for the sole purpose of enabling consideration and review as part of a planning process under the Planning and Environment Act 1987. The document must not be used for any purpose which may breach any copyright


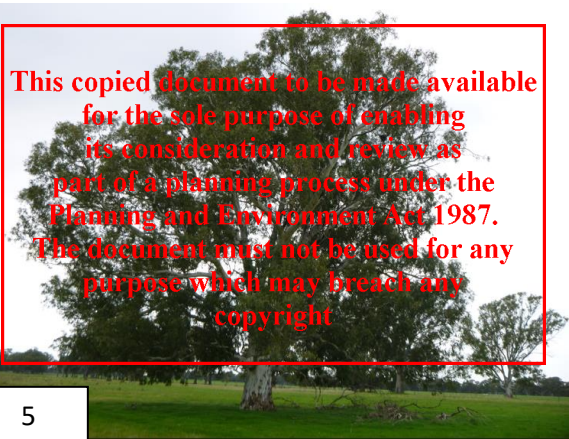

APPENDIX A. TREE DATA FOR RETAINED TREES

Tree No.	Identification	Origin	Permit required for removal	Age	ULE	Health	Structure	Hazard	Height (m)	Width (m)	Retention Value	Recommended for retention	DBH (cm) * = multi-stem	TPZ (m)	SRZ (m)
1	<i>Eucalyptus camaldulensis</i> (River Red Gum)	Indigenous, Naturally Regenerated	Yes	M	L	F	P	H	30	30	H	Yes	320	15.0	5.4
2	<i>Eucalyptus camaldulensis</i> (River Red Gum)	Indigenous, Naturally Regenerated	Yes	M	L	F	P	H	21	15	H	Yes	130	15.0	3.7
3	<i>Eucalyptus camaldulensis</i> (River Red Gum)	Indigenous, Naturally Regenerated	Yes	M	L	F	G	H	22	24	H	Yes	125	15.0	3.6


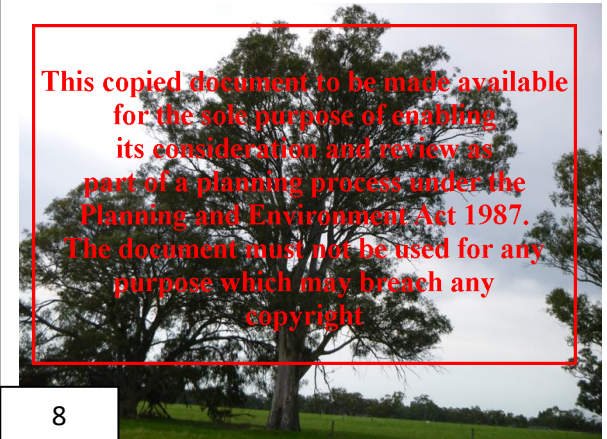

1		2		3	
<p>Tree Protection Measures The TPZ fencing specifications must be a minimum of 1.2 - 1.5 metres in height using high visibility bunting flags with 1.8 metre star pickets every 3-4 metres. This fence will deter the entry of any equipment, vehicles and also the entry of workers and the public into the Tree Protection Zone. The Tree Protection Zone must be clearly signed on all visible sides "Tree Protection Zone" – No Entry.</p>		<p>Tree Protection Measures The TPZ fencing specifications must be a minimum of 1.2 - 1.5 metres in height using high visibility bunting flags with 1.8 metre star pickets every 3-4 metres. This fence will deter the entry of any equipment, vehicles and also the entry of workers and the public into the Tree Protection Zone. The Tree Protection Zone must be clearly signed on all visible sides "Tree Protection Zone" – No Entry.</p>		<p>Tree Protection Measures The TPZ fencing specifications must be a minimum of 1.2 - 1.5 metres in height using high visibility bunting flags with 1.8 metre star pickets every 3-4 metres. This fence will deter the entry of any equipment, vehicles and also the entry of workers and the public into the Tree Protection Zone. The Tree Protection Zone must be clearly signed on all visible sides "Tree Protection Zone" – No Entry.</p>	

This copied document to be made available for the sole purpose of enabling its consideration and review as part of a planning process under the Planning and Environment Act 1987. The document must not be used for any purpose which may breach any copyright

Tree No.	Identification	Origin	Permit required for removal	Age	ULE	Health	Structure	Hazard	Height (m)	Width (m)	Retention Value	Recommended for retention	DBH (cm) * =multi-stem	TPZ (m)	SRZ (m)
4	<i>Eucalyptus camaldulensis</i> (River Red Gum)	Indigenous, Naturally Regenerated	Yes	M	L	F	G	H	26	22	H	Yes	132	15.0	3.7
5	<i>Eucalyptus camaldulensis</i> (River Red Gum)	Indigenous, Naturally Regenerated	Yes	M	L	F	P	H	24	24	H	Yes	151	15.0	3.9
6	<i>Eucalyptus camaldulensis</i> (River Red Gum)	Indigenous, Naturally Regenerated	Yes	M	L	F	P	H	20	22	H	Yes	111	13.3	3.5

	 <p style="color: red; text-align: center;">This copied document to be made available for the sole purpose of enabling its consideration and review as part of a planning process under the Planning and Environment Act 1987. The document must not be used for any purpose which may breach any copyright</p>	
4	5	6
<p>Tree Protection Measures The TPZ fencing specifications must be a minimum of 1.2 - 1.5 metres in height using high visibility bunting flags with 1.8 metre star pickets every 3-4 metres. This fence will deter the entry of any equipment, vehicles and also the entry of workers and the public into the Tree Protection Zone. The Tree Protection Zone must be clearly signed on all visible sides “Tree Protection Zone” – No Entry.</p>	<p>Tree Protection Measures The TPZ fencing specifications must be a minimum of 1.2 - 1.5 metres in height using high visibility bunting flags with 1.8 metre star pickets every 3-4 metres. This fence will deter the entry of any equipment, vehicles and also the entry of workers and the public into the Tree Protection Zone. The Tree Protection Zone must be clearly signed on all visible sides “Tree Protection Zone” – No Entry.</p>	<p>Tree Protection Measures The TPZ fencing specifications must be a minimum of 1.2 - 1.5 metres in height using high visibility bunting flags with 1.8 metre star pickets every 3-4 metres. This fence will deter the entry of any equipment, vehicles and also the entry of workers and the public into the Tree Protection Zone. The Tree Protection Zone must be clearly signed on all visible sides “Tree Protection Zone” – No Entry.</p>

Tree No.	Identification	Origin	Permit required for removal	Age	ULE	Health	Structure	Hazard	Height (m)	Width (m)	Retention Value	Recommended for retention	DBH (cm) * =multi-stem	TPZ (m)	SRZ (m)
7	<i>Eucalyptus camaldulensis</i> (River Red Gum)	Indigenous, Naturally Regenerated	Yes	M	L	F	P	H	23	15	H	Yes	223	15.0	4.6
8	<i>Eucalyptus camaldulensis</i> (River Red Gum)	Indigenous, Naturally Regenerated	Yes	M	L	F	P	H	28	22	H	Yes	162	15.0	4.1
9	<i>Eucalyptus camaldulensis</i> (River Red Gum)	Indigenous, Naturally Regenerated	Yes	M	L	F	G	H	13	15	H	Yes	101	12.1	3.3

	 <p style="color: red; text-align: center;">This copied document to be made available for the sole purpose of enabling its consideration and review as part of a planning process under the Planning and Environment Act 1987. The document must not be used for any purpose which may breach any copyright</p>	
<p>Tree Protection Measures The TPZ fencing specifications must be a minimum of 1.2 - 1.5 metres in height using high visibility bunting flags with 1.8 metre star pickets every 3-4 metres. This fence will deter the entry of any equipment, vehicles and also the entry of workers and the public into the Tree Protection Zone. The Tree Protection Zone must be clearly signed on all visible sides "Tree Protection Zone" – No Entry.</p>	<p>Tree Protection Measures The TPZ fencing specifications must be a minimum of 1.2 - 1.5 metres in height using high visibility bunting flags with 1.8 metre star pickets every 3-4 metres. This fence will deter the entry of any equipment, vehicles and also the entry of workers and the public into the Tree Protection Zone. The Tree Protection Zone must be clearly signed on all visible sides "Tree Protection Zone" – No Entry.</p>	<p>Tree Protection Measures The TPZ fencing specifications must be a minimum of 1.2 - 1.5 metres in height using high visibility bunting flags with 1.8 metre star pickets every 3-4 metres. This fence will deter the entry of any equipment, vehicles and also the entry of workers and the public into the Tree Protection Zone. The Tree Protection Zone must be clearly signed on all visible sides "Tree Protection Zone" – No Entry.</p>

Tree No.	Identification	Origin	Permit required for removal	Age	ULE	Health	Structure	Hazard	Height (m)	Width (m)	Retention Value	Recommended for retention	DBH (cm) * =multi-stem	TPZ (m)	SRZ (m)
10	<i>Eucalyptus camaldulensis</i> (River Red Gum)	Indigenous, Naturally Regenerated	Yes	M	L	F	P	H	24	20	H	Yes	112	13.4	3.5
11	<i>Eucalyptus camaldulensis</i> (River Red Gum)	Indigenous, Naturally Regenerated	Yes	M	L	F	P	H	27	20	H	Yes	90	10.8	3.2
12	<i>Allocasuarina verticillata</i> (Drooping Sheoak)	Indigenous, Naturally Regenerated	Yes	M	L	G	P	L	17	6	M	Yes	40	4.8	2.3



10



11



12

Tree Protection Measures

The TPZ fencing specifications must be a minimum of 1.2 - 1.5 metres in height using high visibility bunting flags with 1.8 metre star pickets every 3-4 metres. This fence will deter the entry of any equipment, vehicles and also the entry of workers and the public into the Tree Protection Zone. The Tree Protection Zone must be clearly signed on all visible sides **“Tree Protection Zone” – No Entry.**

Tree Protection Measures

The TPZ fencing specifications must be a minimum of 1.2 - 1.5 metres in height using high visibility bunting flags with 1.8 metre star pickets every 3-4 metres. This fence will deter the entry of any equipment, vehicles and also the entry of workers and the public into the Tree Protection Zone. The Tree Protection Zone must be clearly signed on all visible sides **“Tree Protection Zone” – No Entry.**

Tree Protection Measures

The TPZ fencing specifications must be a minimum of 1.2 - 1.5 metres in height using high visibility bunting flags with 1.8 metre star pickets every 3-4 metres. This fence will deter the entry of any equipment, vehicles and also the entry of workers and the public into the Tree Protection Zone. The Tree Protection Zone must be clearly signed on all visible sides **“Tree Protection Zone” – No Entry.**

Tree No.	Identification	Origin	Permit required for removal	Age	ULE	Health	Structure	Hazard	Height (m)	Width (m)	Retention Value	Recommended for retention	DBH (cm) * =multi-stem	TPZ (m)	SRZ (m)
13	<i>Eucalyptus camaldulensis</i> (River Red Gum)	Indigenous, Naturally Regenerated	Yes	SM	L	G	G	L	12	6	M	Yes	50	6	2.5



13

Tree Protection Measures

The TPZ fencing specifications must be a minimum of 1.2 - 1.5 metres in height using high visibility bunting flags with 1.8 metre star pickets every 3-4 metres. This fence will deter the entry of any equipment, vehicles and also the entry of workers and the public into the Tree Protection Zone. The Tree Protection Zone must be clearly signed on all visible sides **“Tree Protection Zone” – No Entry.**

ADVERTISED PLAN

This copied document to be made available for the sole purpose of enabling its consideration and review as part of a planning process under the Planning and Environment Act 1987. The document must not be used for any purpose which may breach any copyright

APPENDIX B TREE PROTECTION

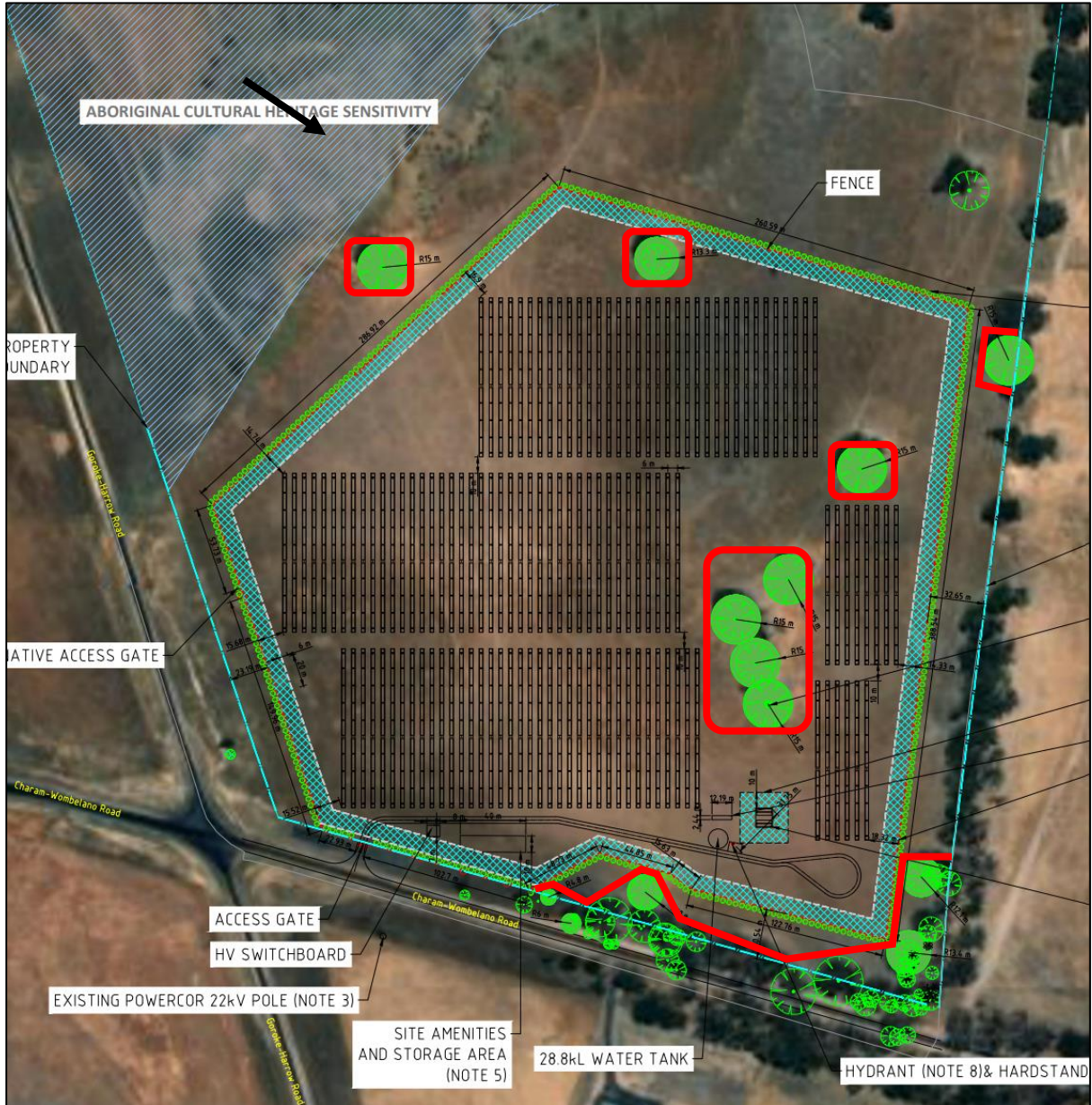
Example of TPZ fencing



**ADVERTISED
PLAN**

This copied document to be made available for the sole purpose of enabling its consideration and review as part of a planning process under the Planning and Environment Act 1987. The document must not be used for any purpose which may breach any copyright

APPENDIX C SITE PLAN AND TREE PROTECTION MANAGEMENT PLAN (TPMP)



All Tree Protection measures must be installed 14 days prior to demolition/construction.

TPZ fencing locations are indicative only.

TPZ bunting flags must be installed outer edge of TPZs provided (see Appendix A).

**ADVERTISED
PLAN**

This copied document to be made available for the sole purpose of enabling its consideration and review as part of a planning process under the Planning and Environment Act 1987. The document must not be used for any purpose which may breach any copyright

APPENDIX D. TREE PROTECTION SIGNAGE



Contact: Tree Care Consulting

Jimmy Ross 0415 944 987

**ADVERTISED
PLAN**

TERMS AND LIMITATIONS OF THE REPORT

Any legal information in the report has been provided to Tree Care Consulting by an external source and it is assumed to be correct. All references to property title and/or control of ownership of land are assumed to be correct as Tree Care Consulting has been advised.

Great care has been taken in sourcing information for this report so as it is correct. Tree Care Consulting cannot be responsible for information provided which is not directly under their control.

The Tree Care Consulting shall not be required to give testimony or attend court for any matter in relation to this report unless further contractual arrangements have been made.

This report is not to be altered in any way. It has been produced as a whole document and is intended for use as a whole document. Any changes or modifications are not to be undertaken. If this occurs the report shall be rendered invalid.

The content of this report is produced in the full and honest opinion of Tree Care Consulting. In no way is it biased or weighted.

No diagrams, pictures or other reference material in this report is said to be to scale or value unless stipulated. All measurements and values are made to the best of Tree Care Consulting ability at the time of the report being compiled. Care should be taken and clarification sought before using as final measurements for whatever reason.

This report is developed around the information provided by the client in the assignment section of the report. Only issues and locations covered in the assignment section are discussed in this report.

All details, information and advice contained in this report have been researched and reference. Where no reference is included, it is the authors learned opinion, experience, and observations.

No section of this report may be reproduced for any reason without the written permission of the Tree Care Consulting.

**ADVERTISED
PLAN**

This copied document to be made available for the sole purpose of enabling its consideration and review as part of a planning process under the Planning and Environment Act 1987. The document must not be used for any purpose which may breach any copyright