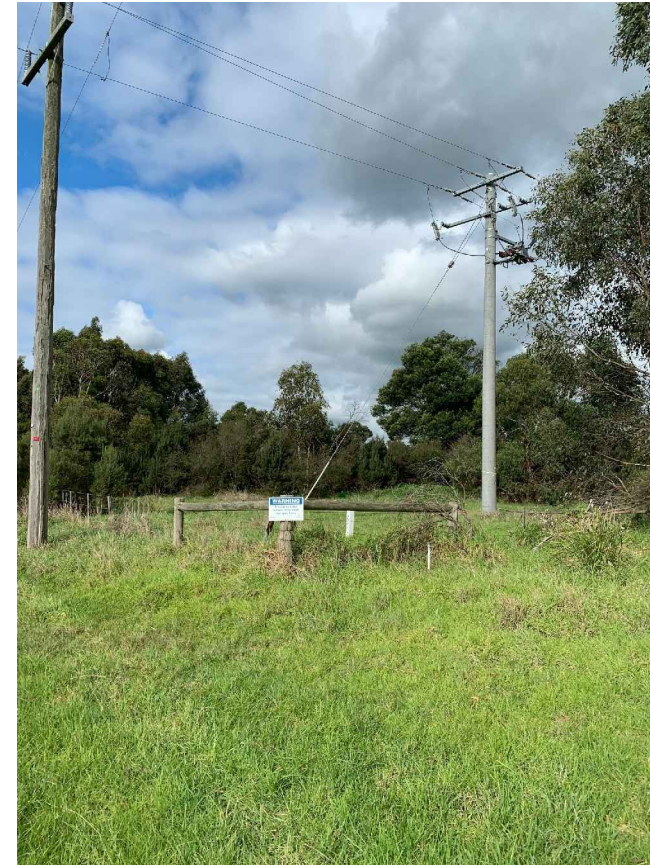


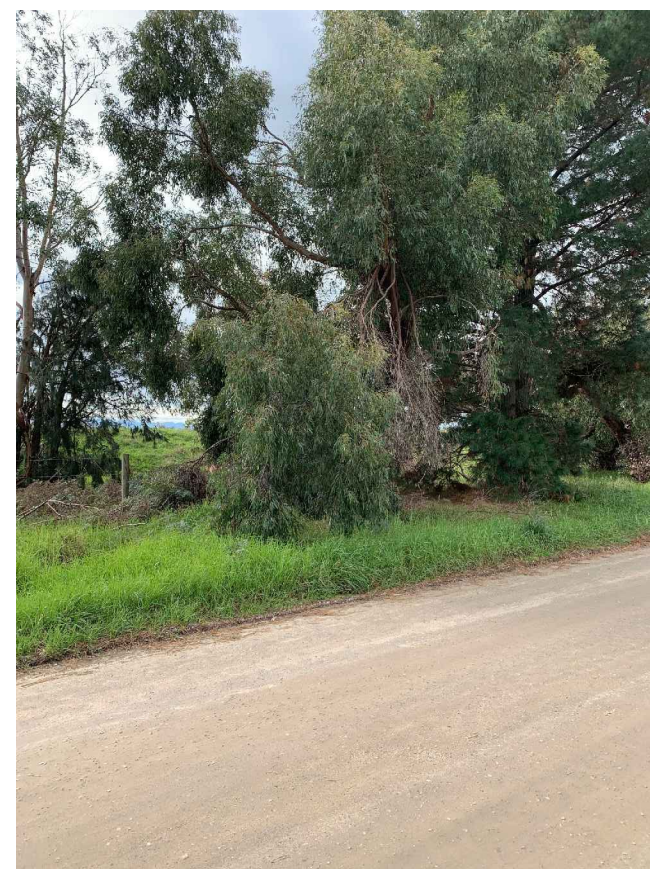
The planting within this part of the site consisting mounding and a mix of trees, shrubs continues to establish very well. At this location the areas within the site is completing screen.



Roadside vegetation along Milners Road and planting within the site provides very good screening from this part of the site.



Roadside vegetation along Milners Road is in good condition and combined with the mounding and rehabilitation planting within the site continues to provide a very effective green edge.



Rehabilitation planting in this part of the site has established well and combined with existing roadside vegetation provides a very effective green buffer.



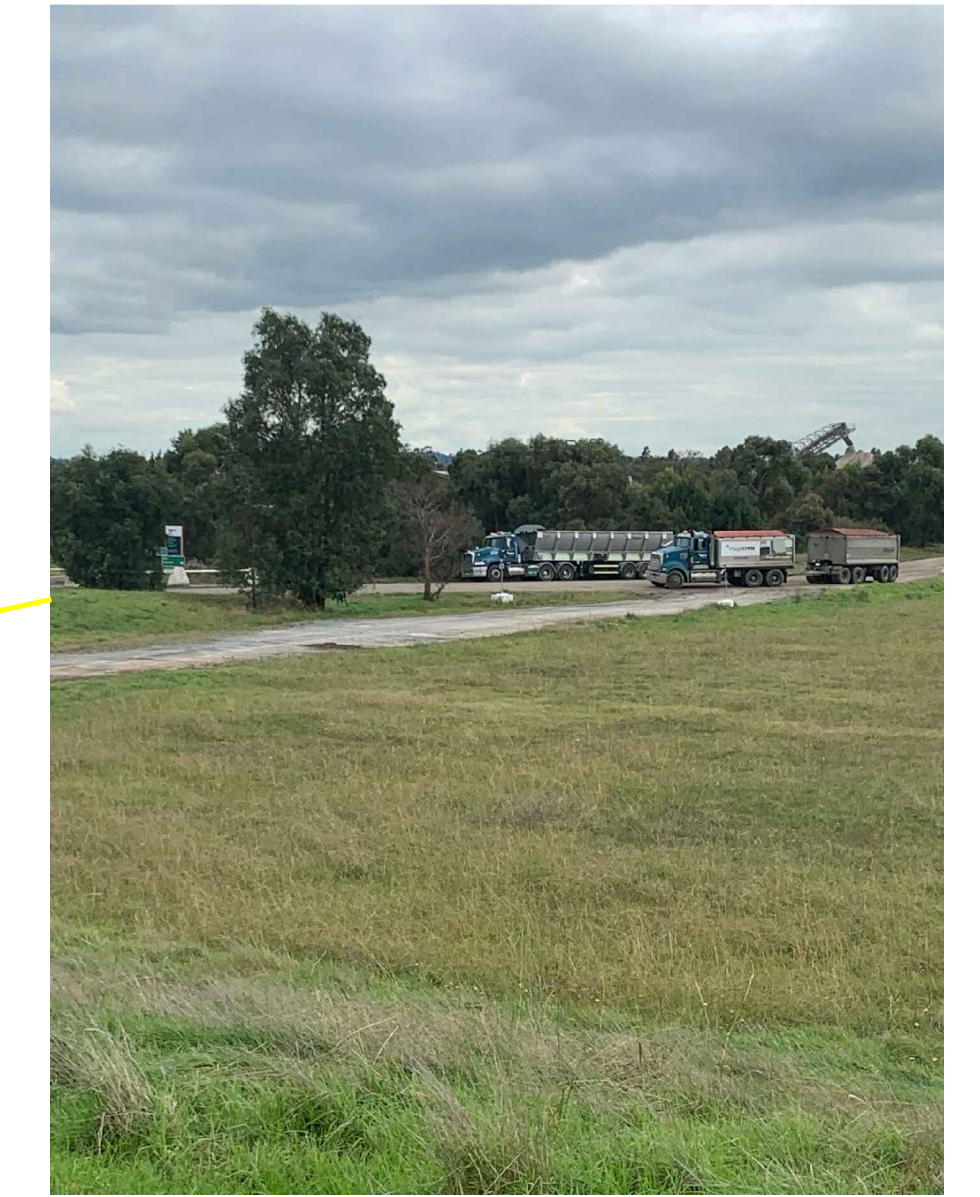
The planting within the front boundary continues to establish with trees and shrubs providing screening.



The trees and shrubs planted on top of the bund along Westernport Road continue to establish well, providing an effective screening to this part of the site.



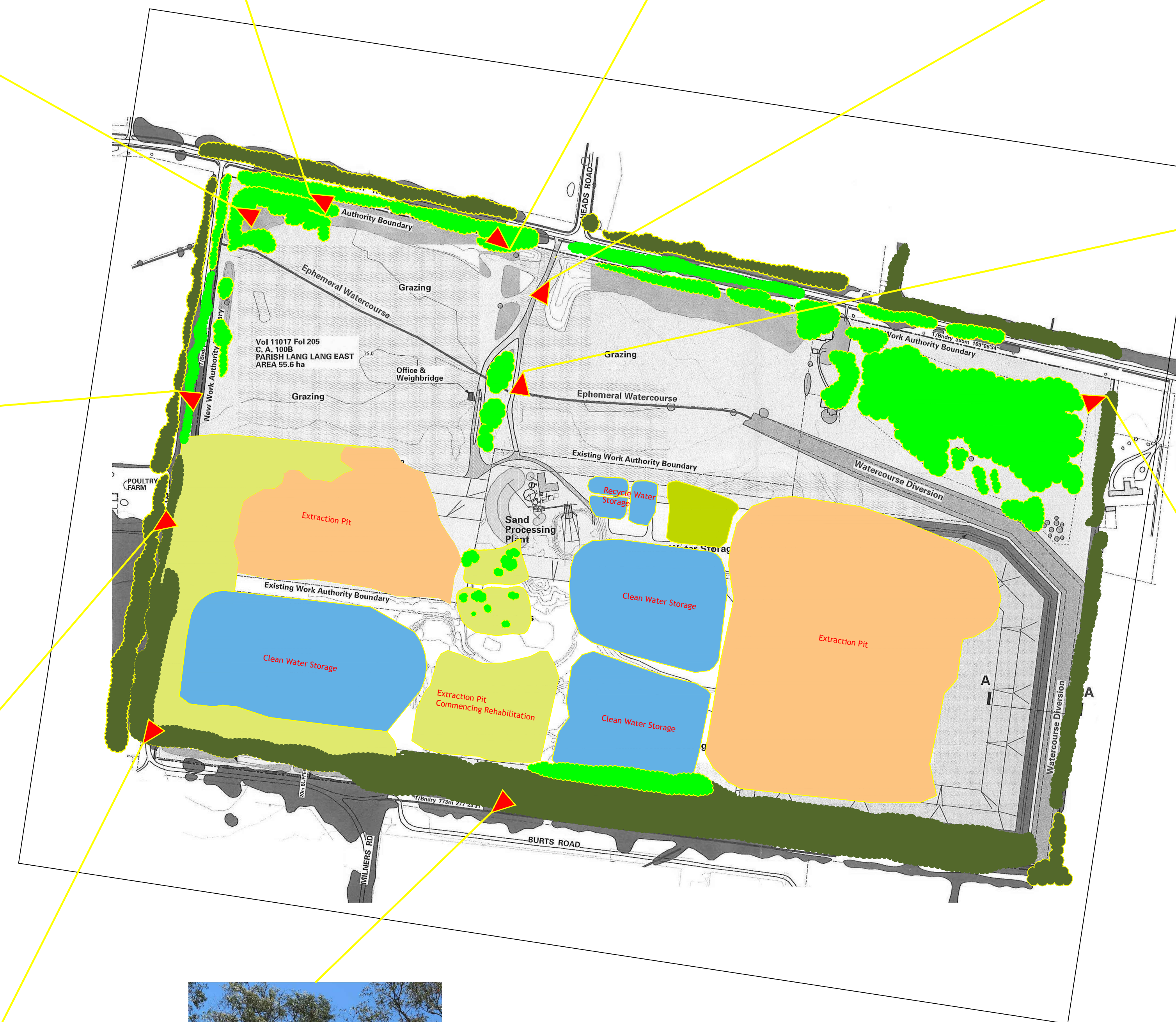
The large groupings of trees and shrubs located in front of the Sand Processing Plant continues to provide excellent screening of buildings and plant equipment. This vegetation has grown very well over the last two years.



The trees and shrubs located have substantially increased in size over the last two years providing excellent screening.



The large Woodlot planting in the north-east corner of the site consisting of a mix of trees and shrubs continues to establish very well. The area provides a very good visual screen from Westernport Road and blends well with the vegetation in adjoining properties.



The southern boundary vegetation and mounding provides very good screening. The existing roadside vegetation combined with the planting within the site along the boundary is in very good condition.



Existing Planting within the site completed by Hanson  
Existing Planting beyond the site

