



EXISTING FRONT SIGNAGE 1 - PENINSULA DRIVE
 DIMENSIONS: 3m(H) x 1m(W)
 HEIGHT ABOVE NGL: 1m
 ILLUMINATED: YES, 2 x GROUND LIGHTS
 HOURS: 7PM TO 6AM (DAILY)
 BAFFLES PROVIDED: NO



EXISTING FRONT SIGNAGE 2- PENINSULA DRIVE
 DIMENSIONS: 4m(W) x 0.5m(H)
 HEIGHT ABOVE NGL: approx 0.6m (VARIES)
 ILLUMINATED: NO
 HOURS: N/A
 BAFFLES PROVIDED: NO

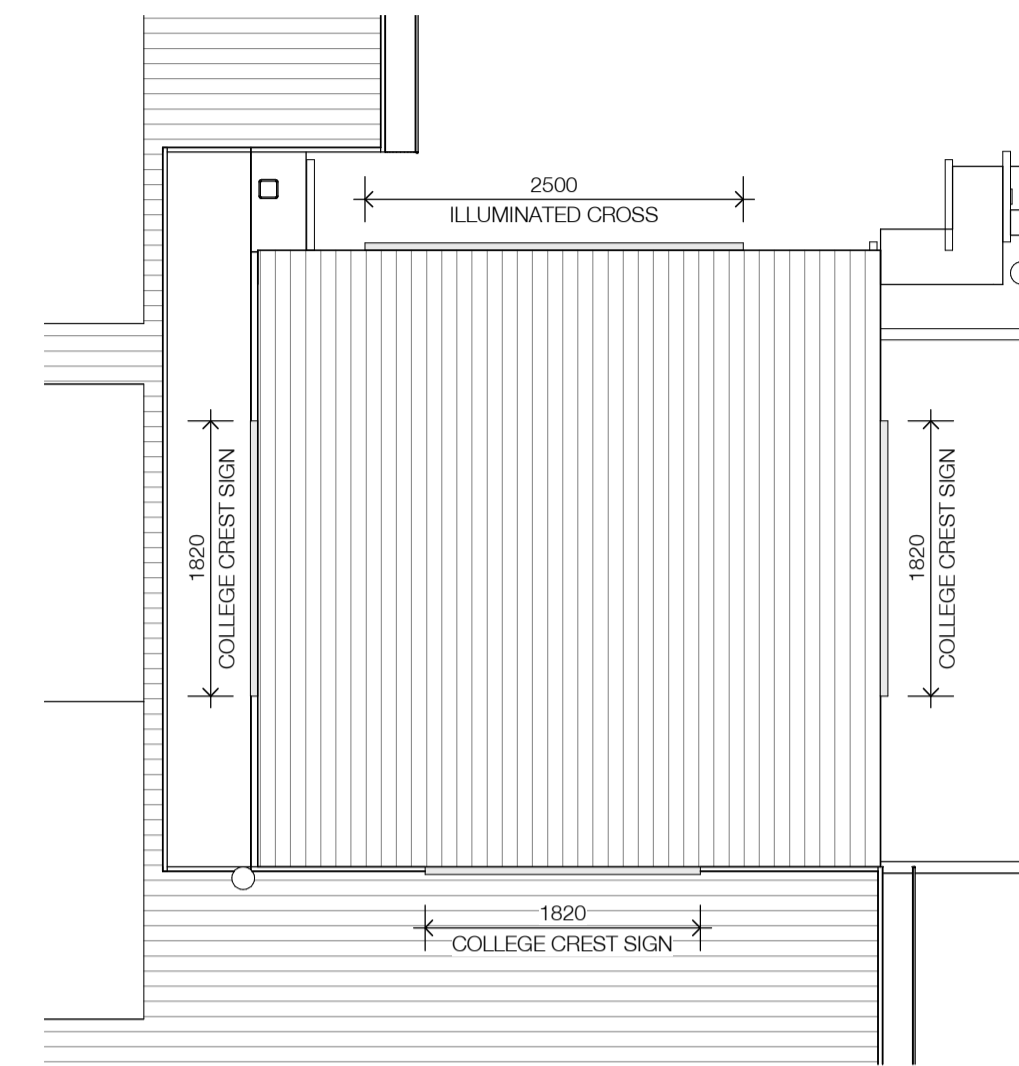
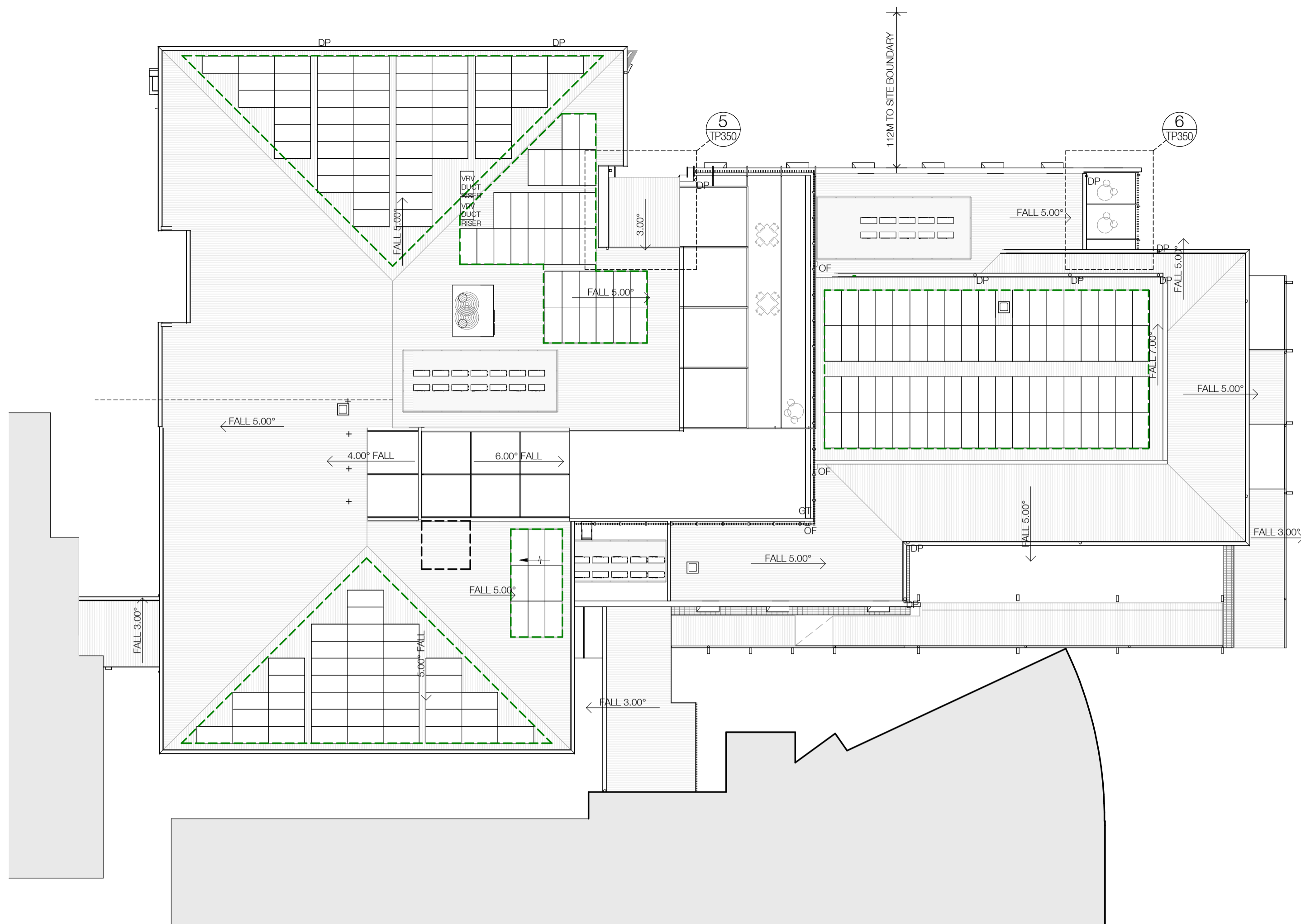


EXISTING FRONT SIGNAGE 1 - PENINSULA DRIVE
 DIMENSIONS: 2.5m(W) x 3.7m(H)
 HEIGHT ABOVE NGL: 6.5m
 ILLUMINATED: NO
 HOURS: N/A
 BAFFLE PROVIDED: NO

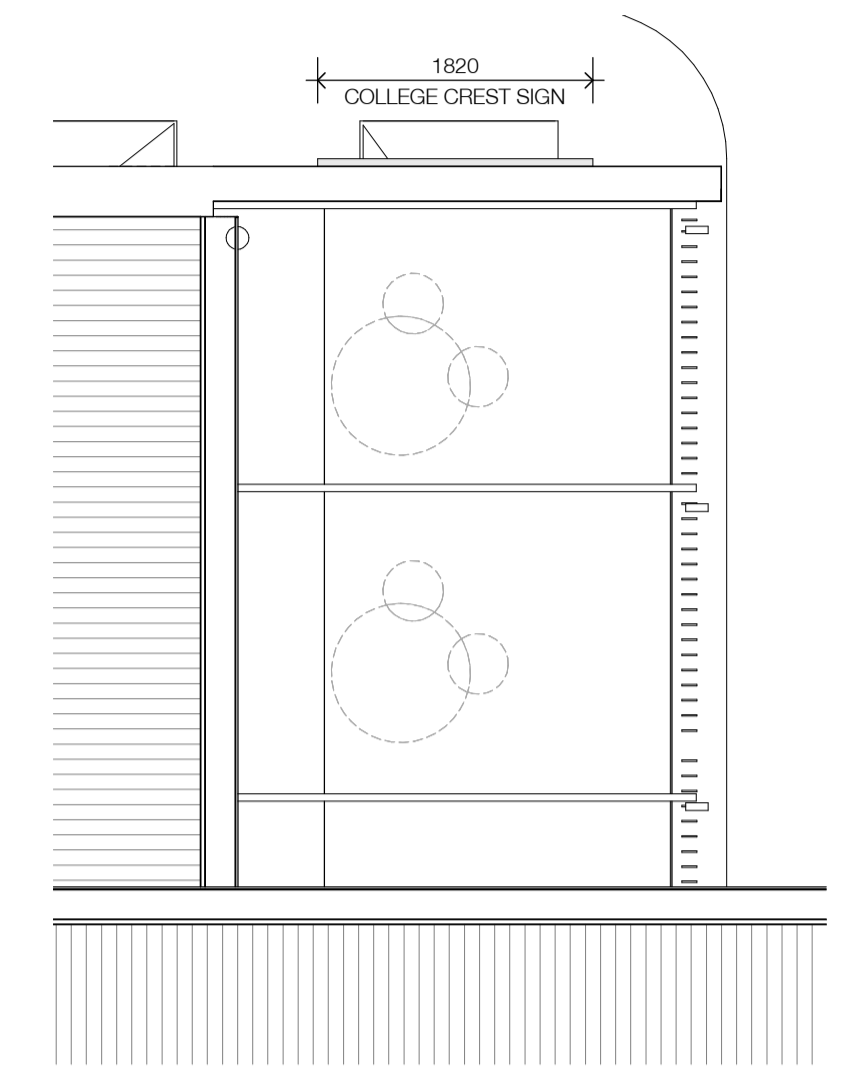
**ADVERTISED
 PLAN**

This copied document to be made available for the sole purpose of enabling its consideration and review as part of a planning process under the Planning and Environment Act 1987. The document must not be used for any purpose which may breach any copyright.

ADVERTISED PLAN

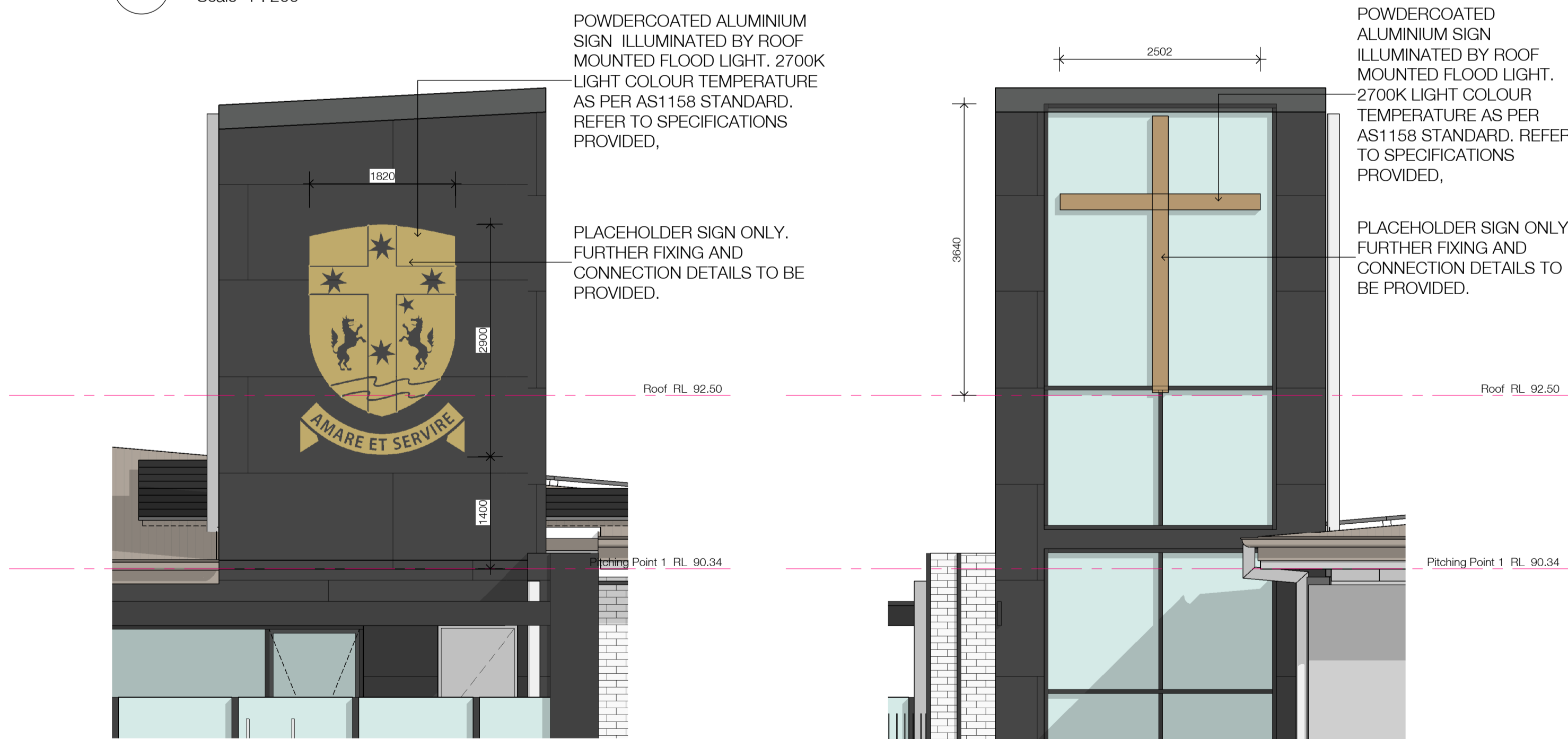


5 TP Signage - Callout 1
Scale 1 : 50



6 TP Signage - Callout 2
Scale 1 : 50

1 Signage Site Plan
Scale 1 : 200



POWDERCOATED ALUMINIUM SIGN ILLUMINATED BY ROOF MOUNTED FLOOD LIGHT. 2700K LIGHT COLOUR TEMPERATURE AS PER AS1158 STANDARD. REFER TO SPECIFICATIONS PROVIDED.

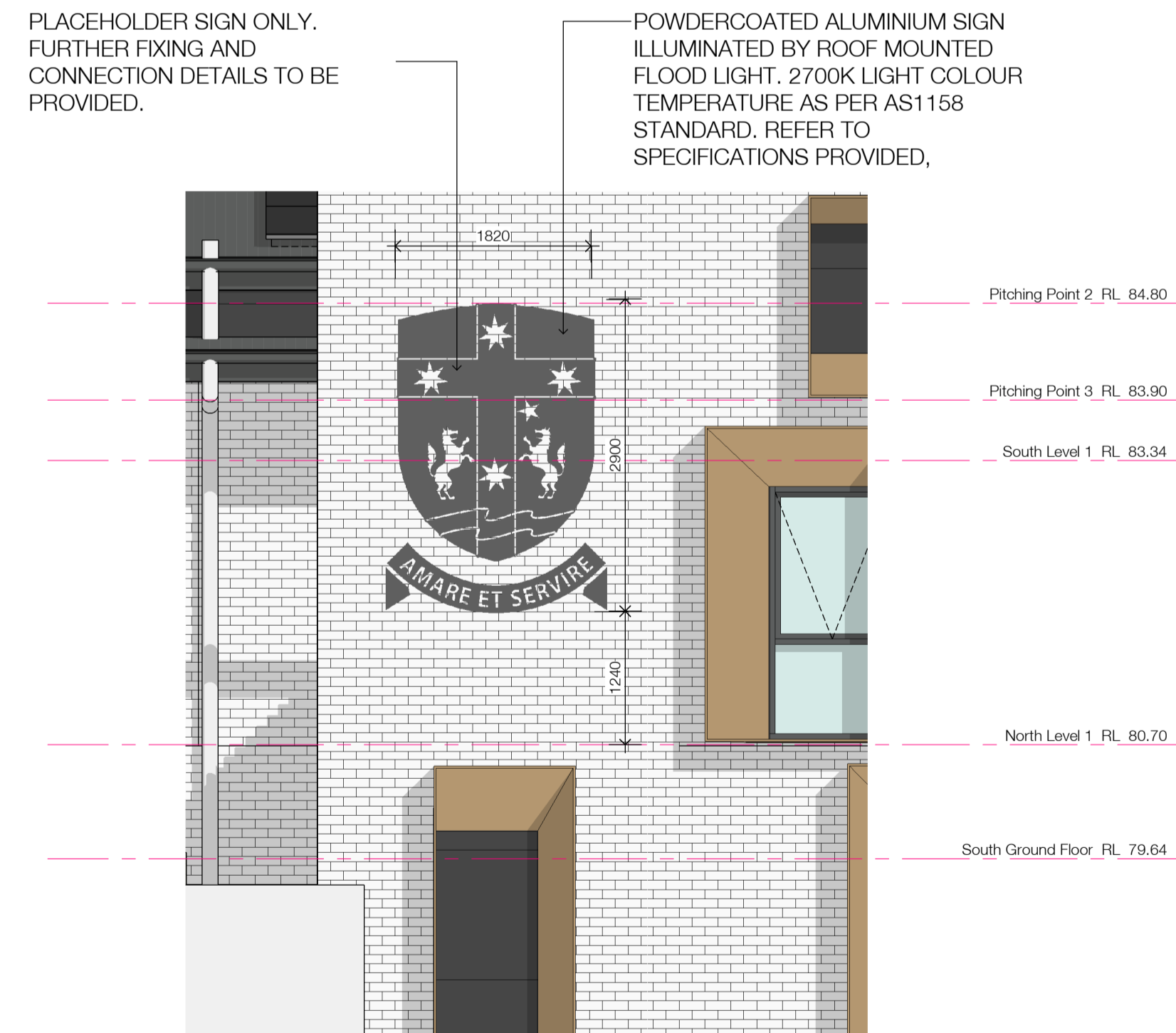
PLACEHOLDER SIGN ONLY. FURTHER FIXING AND CONNECTION DETAILS TO BE PROVIDED.

2 College Crest on Tower
Scale 1 : 50

POWDERCOATED ALUMINIUM SIGN ILLUMINATED BY ROOF MOUNTED FLOOD LIGHT. 2700K LIGHT COLOUR TEMPERATURE AS PER AS1158 STANDARD. REFER TO SPECIFICATIONS PROVIDED.

PLACEHOLDER SIGN ONLY. FURTHER FIXING AND CONNECTION DETAILS TO BE PROVIDED.

3 Illuminated Cross
Scale 1 : 50



POWDERCOATED ALUMINIUM SIGN ILLUMINATED BY ROOF MOUNTED FLOOD LIGHT. 2700K LIGHT COLOUR TEMPERATURE AS PER AS1158 STANDARD. REFER TO SPECIFICATIONS PROVIDED.

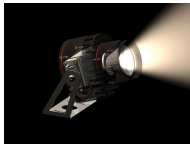
PLACEHOLDER SIGN ONLY. FURTHER FIXING AND CONNECTION DETAILS TO BE PROVIDED.

4 College Crest on Blade Wall
Scale 1 : 50

This copied document to be made available for the sole purpose of enabling its consideration and review as part of a planning process under the Planning and Environment Act 1987. The document must not be used for any purpose which may breach any copyright.



SPOCK



SPOCK - x-ray view

SPOCK



FINISHES



- Surface mounted LED adjustable projector luminaire for outdoor installations
- Suitable for ground, wall or ceiling locations
- IP66 IK07 aluminium and stainless-steel construction

OVERVIEW

Modern shaped LED floodlights designed for the lighting of interiors and exterior locations including trees, facades, signage, monuments and architectural details. The luminaires are available in three different sizes with an array of lighting distributions. They can be mounted on surfaces, on ground spikes and on poles.

DESIGN

Die-cast aluminium structure. EN AB 47100 alloy (low copper content), with double-layer coating for high corrosion resistance, with powders compliant with QUALICOAT standards. AISI 316L stainless steel fixing bracket.

OPTIC

Extra-clear glass diffuser with silkscreen border, fixed via a robotic gluing system. Tuneable white versions with micro-textured glass.

ELECTRICAL

Integral fixed output electronic driver for mains power operation (Class I). Dimmable versions available on request. DALI drivers standard for tuneable white versions.

LIGHT SOURCE

Energy efficient LEDs in 2700K, 3000K, or 4000K. CRI >80. Tuneable white versions with 2700K-5700K CCT.

**ADVERTISED
PLAN**

This copied document to be made available for the sole purpose of enabling its consideration and review as part of a planning process under the Planning and Environment Act 1987. The document must not be used for any purpose which may breach any copyright

VERSION	SIZE	BEAM SPREAD	CCT	FIXTURE OUTPUT	WATTAGE	CODE	DIMENSIONS
Image 1	SPOCK 75	20°	2700k	725lm	12W	541023 ₁	Diagram 1
Image 1	SPOCK 75	20°	3000K	780lm	12W	541003 ₁	Diagram 1
Image 1	SPOCK 75	20°	4000K	811lm	12W	541002 ₁	Diagram 1
Image 1	SPOCK 75	50°	2700k	697lm	12W	541026 ₁	Diagram 1
Image 1	SPOCK 75	50°	3000K	749lm	12W	541006 ₁	Diagram 1
Image 1	SPOCK 75	50°	4000K	778lm	12W	541005 ₁	Diagram 1
Image 2	SPOCK 95	20°	2700k	2141lm	29W	541028 ₁	Diagram 2
Image 2	SPOCK 95	20°	3000K	2302lm	29W	541008 ₁	Diagram 2
Image 2	SPOCK 95	20°	4000K	2415lm	29W	541007 ₁	Diagram 2
Image 2	SPOCK 95	40°	2700k	2153lm	29W	541030 ₁	Diagram 2
Image 2	SPOCK 95	40°	3000K	2315lm	29W	541010 ₁	Diagram 2
Image 2	SPOCK 95	40°	4000K	2428lm	29W	541009 ₁	Diagram 2
Image 3	SPOCK 130	20°	2700k	4059lm	52W	541032 ₁	Diagram 3
Image 3	SPOCK 130	20°	3000K	4365lm	52W	541012 ₁	Diagram 3
Image 3	SPOCK 130	20°	4000K	4477lm	52W	541011 ₁	Diagram 3
Image 3	SPOCK 130	45°	2700k	3981lm	52W	541034 ₁	Diagram 3
Image 3	SPOCK 130	45°	3000K	4281lm	52W	541014 ₁	Diagram 3
Image 3	SPOCK 130	45°	4000K	4390lm	52W	541013 ₁	Diagram 3
Image 3	SPOCK 130	20°	2700K-5700K	2200lm	38W	541100 ₁	Diagram 3
Image 3	SPOCK 130	40°	2700K-5700K	2250lm	38W	541102 ₁	Diagram 3

₁ Colour finishes to be nominated. Add suffix '.1' for White, '.3' for Anthracite, '.4' for Black, '.6' for Grey or '.18' for Deep Brown

**ADVERTISED
PLAN**

This copied document to be made available for the sole purpose of enabling its consideration and review as part of a planning process under the Planning and Environment Act 1987. The document must not be used for any purpose which may breach any copyright

VERSION

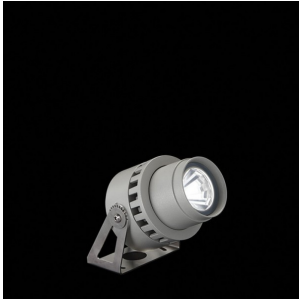


IMAGE 1



IMAGE 2



IMAGE 3

DIAGRAM

**ADVERTISED
PLAN**

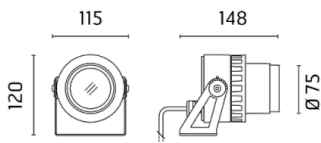


DIAGRAM 1

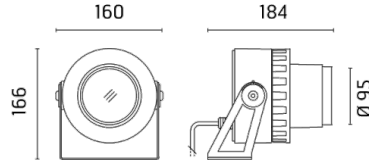


DIAGRAM 2

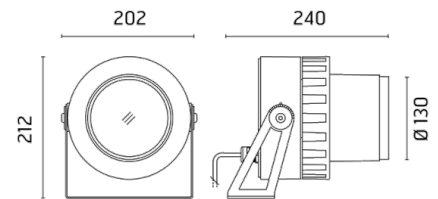


DIAGRAM 3

This copied document to be made available for the sole purpose of enabling its consideration and review as part of a planning process under the Planning and Environment Act 1987. The document must not be used for any purpose which may breach any copyright

ADVERTISED PLAN

VERSION	DESCRIPTION	CODE	DIMENSIONS
Image 4	Visor to suit SPOCK 75 (black)	205	Diagram 4
Image 4	Visor to suit SPOCK 95 (black)	206	Diagram 5
Image 4	Visor to suit SPOCK 130 (black)	207	Diagram 6
Image 5	Flood diffuser to suit SPOCK 75 (black)	208	Diagram 7
Image 5	Flood diffuser to suit SPOCK 95 (black)	209	Diagram 8
Image 5	Flood diffuser to suit SPOCK 130 (black)	210	Diagram 9
Image 6	Anti-glare louvre to suit SPOCK 75 (black)	211	Diagram 10
Image 6	Anti-glare louvre to suit SPOCK 95 (black)	212	Diagram 11
Image 6	Anti-glare louvre to suit SPOCK 130 (black)	213	Diagram 12
Image 5	Elliptical lens to suit SPOCK 75 (black)	261	Diagram 7
Image 5	Elliptical lens to suit SPOCK 95 (black)	262	Diagram 8
Image 5	Elliptical lens to suit SPOCK 130 (black)	263	Diagram 9
Image 7	Kit of 2 ground spikes	203	Diagram 13

VERSION

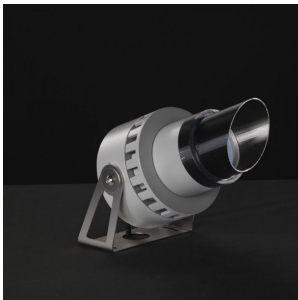


IMAGE 4



IMAGE 5



IMAGE 6



IMAGE 7

This copied document to be made available for the sole purpose of enabling its consideration and review as part of a planning process under the Planning and Environment Act 1987. The document must not be used for any purpose which may breach any copyright

This copied document to be made available for the sole purpose of enabling its consideration and review as part of a planning process under the Planning and Environment Act 1987. The document must not be used for any purpose which may breach any copyright

DIAGRAM

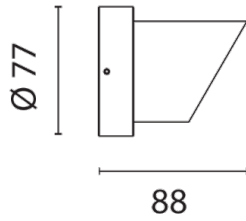


DIAGRAM 4

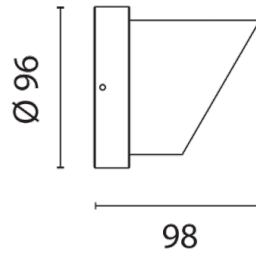


DIAGRAM 5

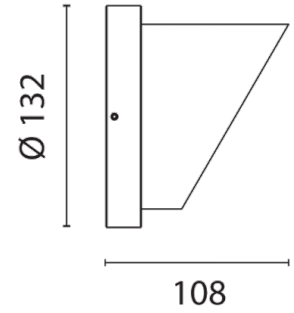


DIAGRAM 6

ADVERTISED
PLAN

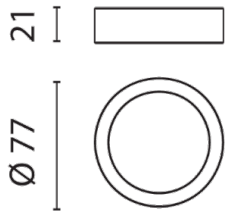


DIAGRAM 7

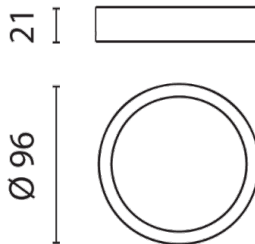


DIAGRAM 8

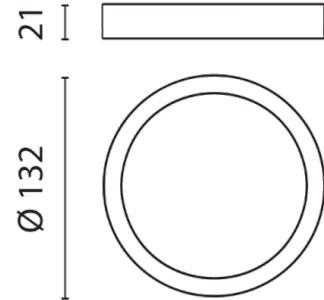


DIAGRAM 9

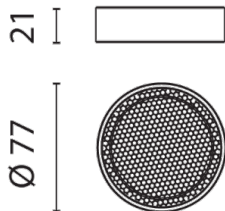


DIAGRAM 10

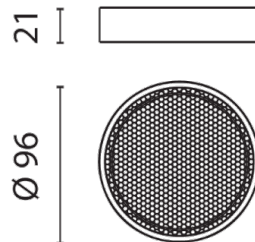


DIAGRAM 11

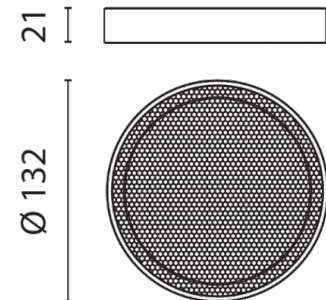


DIAGRAM 12

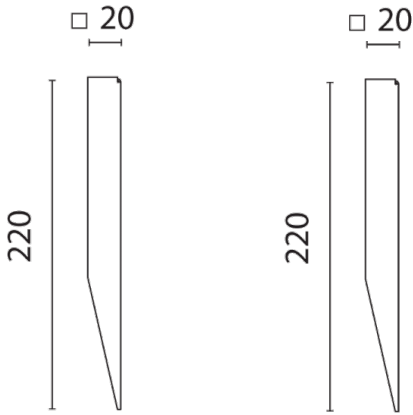


DIAGRAM 13

**ADVERTISED
PLAN**

**This copied document to be made available
for the sole purpose of enabling
its consideration and review as
part of a planning process under the
Planning and Environment Act 1987.
The document must not be used for any
purpose which may breach any
copyright**