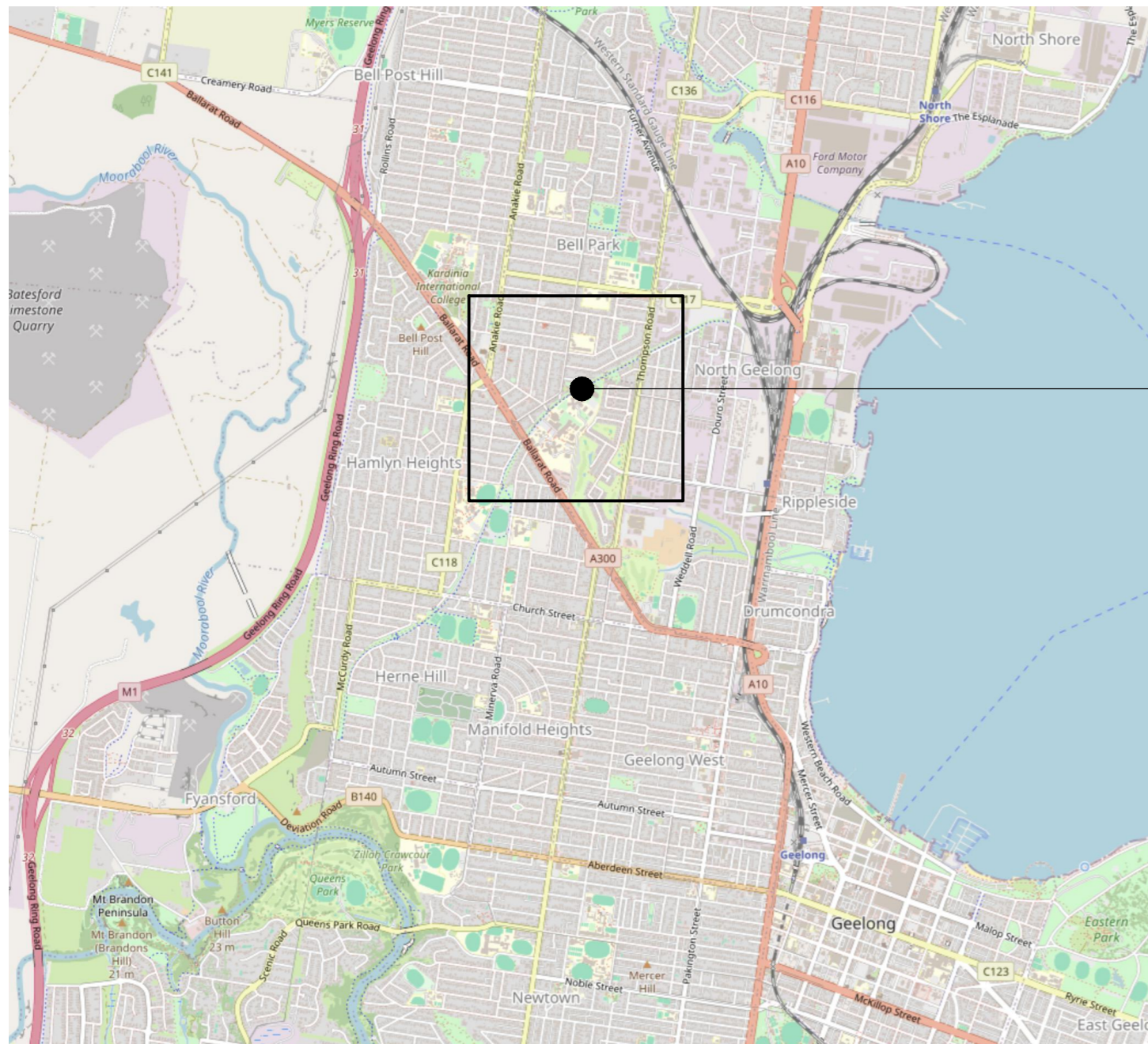


V-SATELLITE BELL PARK LANDSCAPING WORKS



PROJECT LOCATION
Melways Page 441 G7

SHEET LIST TABLE

Sheet No	Title	REV
2522 L00	Cover Sheet	B
2522 L01	Surfacing, Setout & Tree Plan	B
2522 L02	Planting Plan	B
2522 L03	Details	-
2522 L04	Specifications	-

NOTES

Existing Trees:

- A Tree Protection Zone (TPZ) is to be established as shown on this drawing and the Tree Report by Tree Care Consulting. The TPZ is to be
- fenced with a 1.6m high temporary steel mesh fence (eg cyclone mesh)
 - approved by the relevant local council prior to construction and prior to removal.
 - provided with signage fixed to the TPZ noting "Tree Protection Zone - No Access".
 - mulched with 20mm wood mulch to a depth of 100mm and
 - maintained during construction including fortnightly irrigation and weed control.

Within the TPZ:

- the existing soil level must not be altered by either fill or excavation;
- the soil must not be compacted, or the soil drainage patterns changed;
- no fuels, oils, chemicals, waste or other materials are to be stored or dispersed;
- no storage of equipment, machinery or material, or vehicle parking is to occur;
- open trenching to lay underground services must not be used;
- tree roots must not be severed or injured, and;
- machinery must not be used to remove any existing materials.

All tree pruning is to be supervised or carried out by a qualified arborist according to AS 4373-2007 'Pruning of Amenity Trees'.

Preparation:

At least 2 weeks prior to commencement, the works area is to be sprayed off with a Glyphosate-based herbicide (eg Roundup) to kill weeds. Prior to spreading topsoil to garden beds and lawn areas, cultivate site soil to 150mm depth with a rotary hoe or similar, incorporating 1kg/m² (1m³/1000m²) gypsum, and shaping subgrade to achieve adequate drainage prior to topsoiling.

Drainage:

Landscape and/or Building contractor/s are responsible for civil and hydraulic computation for landscape works including surface and sub-surface drainage for all landscape areas prior to commencement of works. Planting locations that are poorly drained (eg at the base of retaining walls) are to be provided with subsoil drainage to stormwater pit.

Garden beds and edging:

Garden beds to be spread with screened organic blended soil complying with AS2223-1978, and mulched as noted. Garden edging is to be installed where shown, using 2.0mm x 100mm galvanised steel garden edging (eg Formboss or equiv), tech-screwed at max 1.5m centres to 2.5mm gauge heavy duty 400minx50x30 angled galvanised steel stakes. 100x50 finesawn treated pine, fixed with hardwood pegs may be used as an alternative if approved by client.

Root Control Barriers

Proposed planting may require the provision of root control barriers or specially designed building footings to prevent root intrusion into adjacent areas or building foundations. A structural engineer may be required to recommend appropriate foundation designs and preventative measures.

Lawn areas:

Lawn areas to be spread with 75mm screened organic topsoil, brought to a fine tilth, finishing as a lightly rolled layer 8mm above adjacent paved surfaces or plinth board. Turf with specified turf in sunny areas and establish as per best horticultural practice.

Plants and planting:

All plants to be healthy disease-free specimens. All tree stock used must be in accordance with AS2303-2015 Tree stock for Landscape Use.

Over-excavate all plant holes by at least twice the volume. Spread Osmocote fertiliser to each plant hole at the following rates: 400mm pots 75gms/ea, 300mm and 140mm pots 25gms/ea. Trees to be staked outside the plants root ball with 3no. 50x50x2400 hardwood stakes, and secured with a figure 8 loop of rubber or hessian banding. Immediately after planting, water in all plants and maintain regular follow-up watering during establishment period.

Irrigation:

A fully automatic irrigation system is required to be designed for the approval of the Project Manager and installed to all planted areas to relevant Australian Standards. Irrigation is to comprise drip irrigation (eg Netafim Scapeline), with a fully automatic controller connected to mains power, and including a handover to clients representative.

Substitutions:

Every effort has been made to specify plants and recommended pot sizes that are readily available from either a multi-nursery trade outlet or specialist local indigenous plant nursery. However, if a plant is unavailable in nominated size, the next smallest size should be used. If a plant is unavailable at all, contact the Landscape Architect for recommendation of a suitable substitute plant.

Maintenance:

Landscape works are to be maintained for 13 week following Practical Completion, during which time all garden and lawn areas are to be maintained to a high standard, including lawn mowing, pruning, fertilising, watering, and weeding. Garden beds and lawn areas are to be regularly watered during establishment period and dry spells. Any plants that are missing, damaged, in poor health or dead are to be replaced.

This copied document to be made available for the sole purpose of enabling its consideration and review as part of a planning process under the Planning and Environment Act 1987. The document must not be used for any purpose which may breach any copyright

ADVERTISED
PLAN

SUE	REVISION	DRN	CHK	APP	DATE
	COORDINATION				09/12/25
	TOWN PLANNING				12/12/25



Perry Mills & Associates
Landscape Architecture

ph: 0428 848 646
e: perry@perrymills.com.au
w: www.perrymills.com.au

SCALE
1:100 @ A1
1:200 @ A3

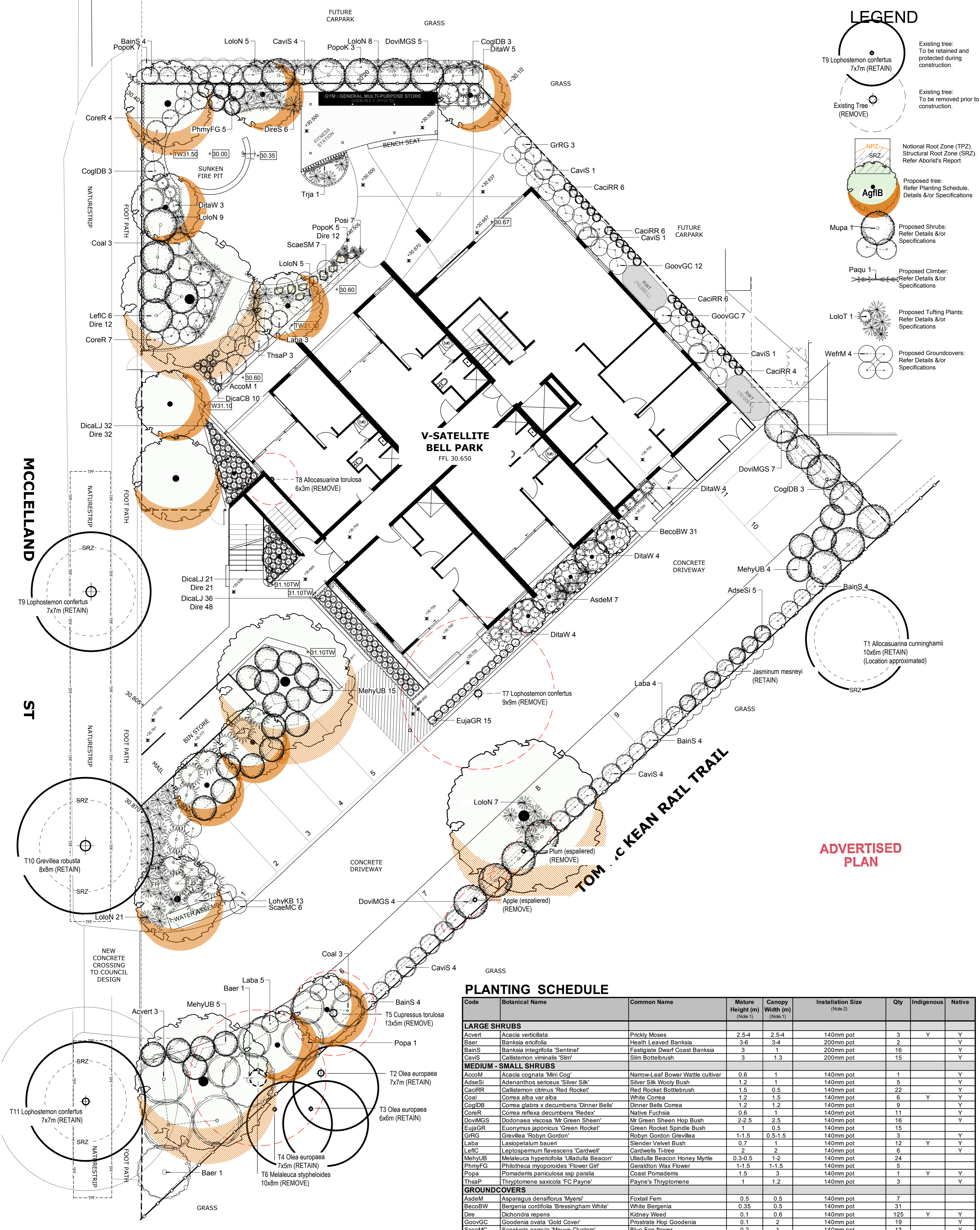


PROJECT NAME & LOCATION
V-Satellite Bell Park
McClelland Drive, Bell Park
City of Greater Geelong
Wadawurrung Country
CLIENT
Vasey - RSL

DRAWING TITLE
COVER SHEET

DRAWING NUMBER
2522 L00

REVISION
B



LEGEND

- Existing tree: T9 Lophostemon confertus 7x7m (RETAIN)
- Existing tree: To be removed prior to construction.
- Notional Root Zone (TPZ), Structural Root Zone (SRZ). Refer Arborist's Report
- Proposed tree: Refer Planting Schedule, Details &/or Specifications
- Proposed Shrubs: Refer Details &/or Specifications
- Proposed Climber: Refer Details &/or Specifications
- Proposed Tufting Plants: Refer Details &/or Specifications
- Proposed Groundcovers: Refer Details &/or Specifications

ADVERTISED PLAN

PLANTING SCHEDULE

Code	Botanical Name	Common Name	Mature Height (m) (Note 1)	Canopy Width (m) (Note 1)	Installation Size (Note 2)	Qty	Indigenous	Native
LARGE SHRUBS								
Acvert	Acacia verticillata	Prickly Moses	2.5-4	2.5-4	140mm pot	3	Y	Y
Baer	Banksia ericifolia	Heath Leaved Banksia	3-6	3-4	200mm pot	2	Y	Y
BainS	Banksia integrifolia 'Sentinel'	Fastigate Dwarf Coast Banksia	3	1	200mm pot	16	Y	Y
CaviS	Callistemon viminalis 'Slim'	Slim Bottlebrush	3	1.3	200mm pot	15	Y	Y
MEDIUM - SMALL SHRUBS								
AccoM	Acacia cognata 'Mini Cog'	Narrow-Leaf Bower Wattle cultivar	0.6	1	140mm pot	1	Y	Y
AdseSi	Adenanthos sericeus 'Silver Silk'	Silver Silk Woolly Bush	1.2	1	140mm pot	5	Y	Y
CaciRR	Callistemon citrinus 'Red Rocket'	Red Rocket Bottlebrush	1.5	0.5	140mm pot	22	Y	Y
Coal	Correa alba var alba	White Correa	1.2	1.5	140mm pot	6	Y	Y
CogIDB	Correa glabra x decumbens 'Dinner Bells'	Dinner Bells Correa	1.2	1.2	140mm pot	9	Y	Y
CoreR	Correa reflexa decumbens 'Redex'	Native Fuchsia	0.6	1	140mm pot	11	Y	Y
DoviMGS	Dodonaea viscosa 'Mr Green Sheen'	Mr Green Sheen Hop Bush	2-2.5	2.5	140mm pot	16	Y	Y
EujaGR	Euonymus japonicus 'Green Rocket'	Green Rocket Spindle Bush	1	0.5	140mm pot	15	Y	Y
GrRG	Grevillea 'Robyn Gordon'	Robyn Gordon Grevillea	1-1.5	0.5-1.5	140mm pot	3	Y	Y
Laba	Lasiopetalum baueri	Slender Velvet Bush	0.7	1	140mm pot	12	Y	Y
LeflC	Leptospermum flavescens 'Cardwell'	Cardwells T-tree	2	2	140mm pot	6	Y	Y
MehyUB	Melaleuca hypericifolia 'Ulladulla Beacon'	Ulladulla Beacon Honey Myrtle	0.3-0.5	1-2	140mm pot	24	Y	Y
PhmyFG	Philothea myoporoides 'Flower Girl'	Geraldton Wax Flower	1-1.5	1-1.5	140mm pot	5	Y	Y
Popa	Pomadernis paniculosa ssp paralia	Coast Pomadernis	1.5	3	140mm pot	1	Y	Y
ThsaP	Thryptomena saxicola 'FC Payne'	Payne's Thryptomene	1	1.2	140mm pot	3	Y	Y
GROUNDCOVERS								
AsdeM	Asparagus densiflorus 'Myers'	Foxtail Fern	0.5	0.5	140mm pot	7	Y	Y
BecoBW	Bergenia cordifolia 'Bressingham White'	White Bergenia	0.35	0.5	140mm pot	31	Y	Y
Dire	Dichondra repens	Kidney Weed	0.1	0.6	140mm pot	125	Y	Y
GoovGC	Goodenia ovata 'Gold Cover'	Prostrate Hop Goodenia	0.1	2	140mm pot	19	Y	Y
ScaeMC	Scaevola aemula 'Mauve Clusters'	Blue Fan-flower	0.2	1	140mm pot	13	Y	Y
TUFTING PLANTS								
DicaCB	Dianella caerulea 'Cassa Blue'	Blue Flax-lily	0.5	0.4	140mm pot	10	Y	Y
DicaLJ	Dianella caerulea 'Little Jess'	Dwarf Blue Flax Lily	0.4	0.4	140mm pot	89	Y	Y
DireS	Dianella revoluta 'Seaspray'	Flax Lily cultivar	1.0	1.0	140mm pot	6	Y	Y
DitaW	Dianella tasmanica 'Wyesena'	Variagated Tasman Flax Lily	0.8-0.9	0.8	140mm pot	20	Y	Y
LoloKB	Lomandra hystrix 'Katie Belles'	River Mat Rush cultivar	1.5-1.8	1.5-1.8	140mm pot	13	Y	Y
LoloN	Lomandra longifolia 'Nyalla'	Lomandra Nyalla	0.8-0.9	0.8-0.9	140mm pot	55	Y	Y
PopoK	Poa polyformis 'Kingsdale'	Coast Tussock-grass	0.45	0.45	140mm pot	15	Y	Y
Posi	Poa sieberiana	Grey Tussock Grass	0.4	0.4	140mm pot	7	Y	Y
CLIMBING PLANTS								
Trja	Trachelospermum jasminoides	Confederate Star Jasmine	climber		140mm pot	1	Y	Y

This copied document to be made available for the sole purpose of enabling its consideration and review as part of a planning process under the Planning and Environment Act 1987. The document must not be used for any purpose which may breach any copyright.

SUE REVISION	DRN	CHK	APP	DATE
COORDINATION				09/12/25
TOWN PLANNING				12/12/25

Perry Mills & Associates
Landscape Architecture

ph: 0428 848 646
e: perry@perrymills.com.au
w: www.perrymills.com.au

SCALE
1:100 @ A1
1:200 @ A3

PROJECT NAME & LOCATION
V-Satellite Bell Park
McClelland Drive, Bell Park
City of Greater Geelong
Wadawurrung Country
CLIENT
Vasey - RSL

DRAWING TITLE
PLANTING PLAN

DRAWING NUMBER
2522 L02

REVISION
B