



**ADVERTISED
PLAN**

This copied document to be made available for the sole purpose of enabling its consideration and review as part of a planning process under the Planning and Environment Act 1987. The document must not be used for any purpose which may breach any copyright



Photomontage

5MW Solar Energy Facility

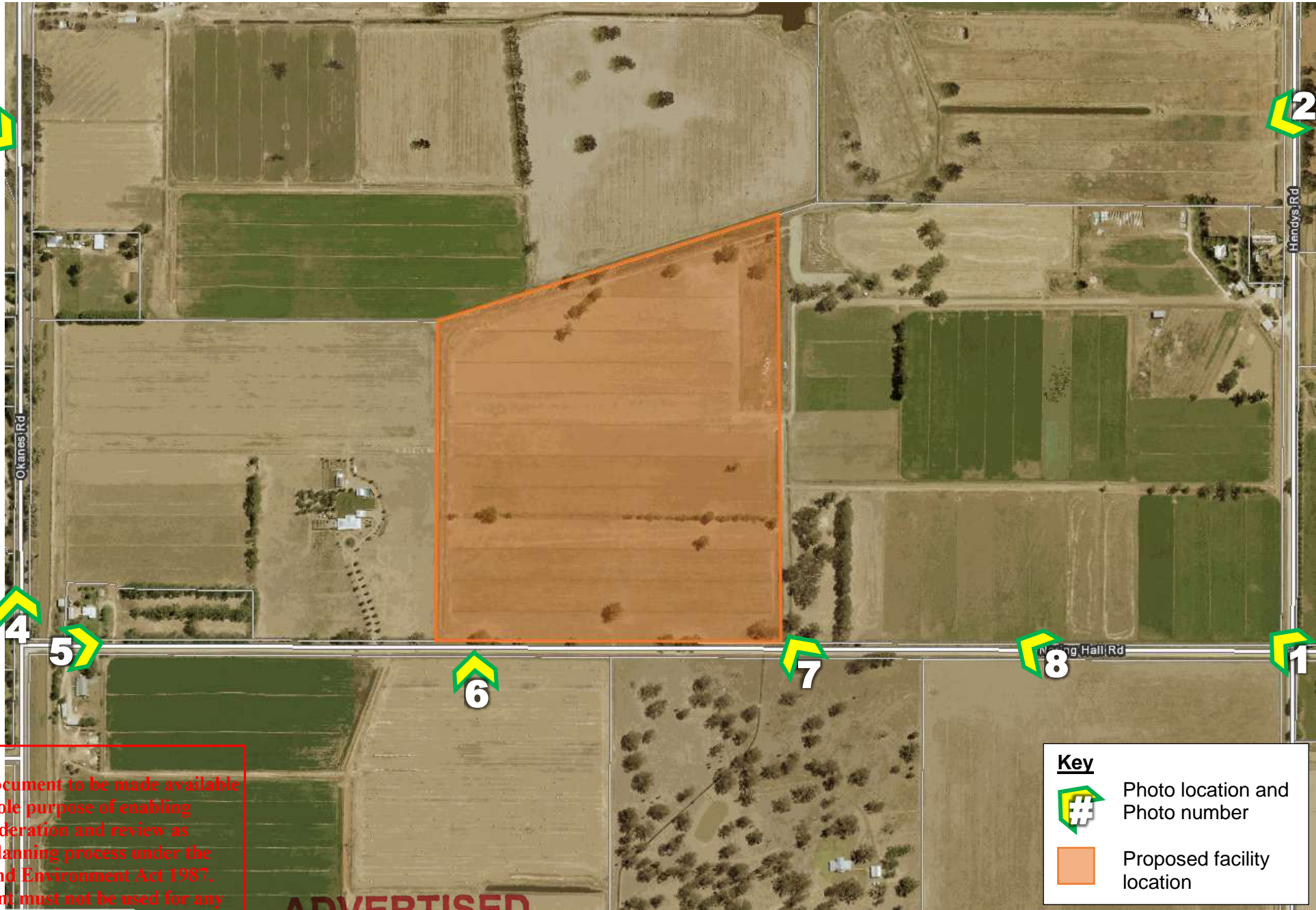
574 Hendys Road, Numurkah

Rev. 1 June 2020

Document Ref: Photomontage, Rev. 1

Level 1 135 Fryers Street, Shepparton, Vic, 3630
Telephone (03) 5820 7700 Facsimile (03) 5822 4878

■ Visiting Offices: ■ Shop 3, 11-13 Sydney Street, Kilmore, Vic. 3764 ■ Ph: (03) 5781 1939
■ Suite 3, 33 Nish Street, Echuca, Vic. 3564 ■ Ph: (03) 5482 9100



This copied document to be made available for the sole purpose of enabling its consideration and review as part of a planning process under the Planning and Environment Act 1987. The document must not be used for any purpose which may breach any copyright

ADVERTISED PLAN

Key

- Photo location and Photo number
- Proposed facility location



Facility behind tree belt (approx.
650m from photo location)



Corner Naring Hall and Hendys Road (facing north west) – Location of solar energy facility marked

Photo 1

Facility behind trees (approx.
670m from photo location)



Along Hendys Road (facing west) – Location of solar energy facility marked

Photo 2



Facility behind tree belt (approx. 760m away)



Along Okanes Road (facing south east) – Location of solar energy facility marked

Photo 3



Facility not in photo (approximately 520m east)

Okanes Road (facing north) – illustrating extent of established vegetation along rural interface

Photo 4



Naring Hall Road (facing east) – approximate site entrance marked by arrow

Photo 5



Subject site – showing western boundary of proposed facility – photo from Naring Hall Rd

Photo 6



Land directly east of proposed facility – photo from Naring Hall Rd (facing north)

Photo 7



Facility behind tree belt (approx. 340m away)



Photo from Naring Hall Road (facing north west)

Photo 8