



**ADVERTISED
PLAN**

Waste Management Plan

**1-3 Gloucester Crescent,
Shepparton**

09th April 2026

Admin@msconsultants.com.au

**Melbourne
Sustainability
Consultants.**

**This copied document to be made available
for the sole purpose of enabling
its consideration and review as
part of a planning process under the
Planning and Environment Act 1987.
The document must not be used for any
purpose which may breach any
copyright**

Table of Contents

Executive Summary.....	3
1. Introduction.....	4
a. Proposed Development.....	4
b. Local Waste Standards and Limitations	4
2. Waste Generation Assessment.....	5
a. General Waste and Recycling.....	5
b. Food and Organic (FOGO) Waste Separation	5
c. Waste Generation	5
d. Other Waste.....	6
3. Waste Systems & Storage.....	6
a. Bin Quantity and Size	6
b. Bin Storage Requirements.....	6
c. Bin Colour and Signage	7
d. Internal Waste System.....	8
4. Waste Collection and Methodology	9
5. Communication Strategy.....	10
6. Best Practice Waste Management	11
Appendix A – Waste Drawings.....	12

**ADVERTISED
PLAN**

Document History

Version	Date	Status	Author	Approved
0	31/03/2026	First Issue	YL	DM
1	01/04/2026	Updated report as per client's comments	YL	DM
2	09/04/2026	Updated report as drawing updated	YL	DM
3	06/05/2026	Updated report as per council's comments	YL	DM

ADVERTISED PLAN

IP and Copyright Disclaimer

This report is protected by Australian copyright law and is the property of MSC. The information contained in this report is intended for the sole use of MSC's client and is not to be shared or distributed to any third party without prior written permission from MSC.

This document, including all content, materials, and information contained herein, is the intellectual property of MSC and is protected by Australian intellectual property laws, including copyright and trademark.

Executive Summary

This executive summary outlines the key points of the operational Waste Management Plan for the proposed school located at 1-3 Gloucester Crescent, Shepparton. The complete report must be thoroughly reviewed prior to implementing the operational waste management plan.

The development is a two-storey school with associated car park.

Waste will be collected via a council contractor with the following frequency and bin quantity:

Waste Type	Bin quantity	Collection Frequency	Waste Contractor
Garbage	1 x 240L	1 time/fortnightly	Council Contractor
Recycling	1 x 240L	1 time/fortnightly	Council Contractor
FOGO	1 x 80L	1 time/weekly	Council Contractor
Glass	1 x 80L	1 time/ four week	Council Contractor

Collections will be undertaken from the kerbside of Gloucester Crescent (Waste collection Point) by Council waste truck.

Bins will be rolled by the cleaner/ staffs from the storage to the kerbside on the evening prior to collection day. The collection vehicle will stop along King Street and collect bins directly. Bins will be returned to the storage area by the cleaner/ staff once empty by the end of collection day.

Occasionally, as a result of shifts in legislative obligations, modifications in the development's requirements (such as changes in waste generation rates, volume, or distribution), or unforeseen operational challenges, it becomes the responsibility of School Management to coordinate the required revisions to this Waste Management Plan.

**ADVERTISED
PLAN**

1. Introduction

a. Proposed Development

The site is located at 1-3 Gloucester Crescent, Shepparton within Greater Shepparton City council. The site is provided with one entrance via King Street.

It is proposed to use the existing two storey building on the site as a primary school with the following development summary:

School	
Total student number	150

b. Local Waste Standards and Limitations

The following relevant guidelines and standards have been considered while preparing this operational waste management:

- Sustainability Victoria – Better Practice Guide for Waste Management and Recycling in Multi-Unit Development (2019)
- City of Melbourne Waste Generation Rates 2021 – SV guidelines bases all its waste generation on City of Melbourne.

This report does not cover waste management during the construction and fit-out stages of the development.

**ADVERTISED
PLAN**

2. Waste Generation Assessment

a. General Waste and Recycling

Sustainability Victoria – Better Practice Guide for Waste Management and Recycling in Multi-Unit Development (2019) specifies waste generation rates. Based on SV's guidelines, rates for general rubbish and recycling are as follows:

General Waste Rates

- Education or training (teaching space) – 0.5L per student per week

Recycling Waste Rates

- Education or training (teaching space) – 0.5L per student per week

b. Food and Organic (FOGO) Waste Separation

This list of waste types to be separately treated is expected to expand by 2030 in line with the Victoria State Government's Recycling Victoria Policy. This will include separate treatment of FOGO and glass waste for a 4-stream system.

FOGO have been separated through an additional waste collection stream. An allocation for future separate glass waste stream service has been included in line with Victoria's 2030 targets. Glass collection services will be required to be provided once it is compulsory to start offering the service. Based on previous experience and guidelines (SV and City of Melbourne), the following percentages of these separate streams have been adopted:

- 20% of general waste is FOGO.
- 15% of commingled recyclables is glass.

c. Waste Generation

Based on the waste generation listed above, the daily rates for the proposed development are detailed in the following table:

Occupancy	Garbage (L/week)	Recycling (L/week)	FOGO (L/week)	Glass (L/week)
Student	0.4L	0.4L	0.1L	0.1L

Based on the rates above, the total waste generation for the proposed development will be as follows:

Occupancy	Number	Garbage (L/week)	Recycling (L/Week)	FOGO (L/Week)	Glass (L/week)
Student	150	60L	60L	15L	15L
TOTAL		60L	60L	15L	15L

**ADVERTISED
PLAN**

d. Other Waste

In addition to the waste streams described above, the development will generate hard waste and e-waste.

The school will not have access to Council's hard waste collection and will need to arrange for hard waste collection privately.

E-Waste is banned from landfill. Occupants will be required to dispose of their E-waste at their nearest drop-off point. The nearest e-waste recycling drop-off point can be found on Planet Ark's *Recycling Near You* at <https://recyclingnearyou.com.au/electrical>.

3. Waste Systems & Storage

a. Bin Quantity and Size

Based on the waste generation listed in section 2c, the following bins and collection frequency will be required for the proposed development:

Stream	Bin Size	Qty	Collection Frequency (times per week)	Contractor
Garbage	1 x 240L	1	1 time/fortnightly	Council
Recycling	1 x 240L	1	1 time/fortnightly	Council
FOGO	1 x 80L	1	1 time/weekly	Council
Glass	1 x 80L	1	1 time/ four weeks	Council

The proposed bin dimensions are as follows (from SULO):

- 80L bins - Height 0.84m, Width 0.45m, Depth 0.51m for footprint of 0.23m²/bin.
- 240L bins - Height 0.93m, Width 0.72m, Depth 0.58m for footprint of 0.42m²/bin.

b. Bin Storage Requirements

Bin Storage Location and Size

Based on the number of bins listed in section 3a, the total footprint of the bins will be 1.3m². The proposed bin storage area located on adjacent to the south of the bicycle parking will be sufficient to store all bins and allow space for manoeuvring. The proposed bin storage allows easy access for users as well as easy transfer of bins to the collection point. See screenshot below of the proposed bin storage, and refer to Appendix A for the ground floor plan:

**ADVERTISED
PLAN**

ADVERTISED PLAN

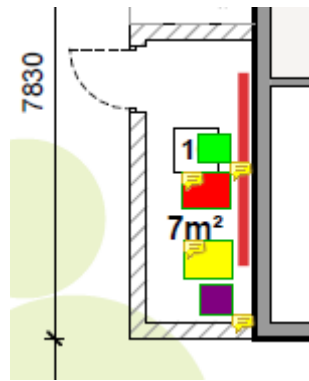


Figure 1: Potential Waste storage.

The bin storage area will be appropriately enclosed to ensure that the visual amenities are not compromised.

Bin Washing

The cleaner will ensure that the bin storage area remains clean and clear to avoid attracting vermin and maintain easy access.

A bin wash area will be provided near or within the storage area. The bin washing area will include a tap, hose as well as drainage of all wastewater directly to the sewer.

Ventilation

The storage area is outdoor and thus naturally ventilated which will help reduce odours related to the waste.

Noise

To minimise the disturbance to residents during waste collection, the collection should follow the criteria specified by the EPA, as below:

- Collections occurring once a week should be restricted to the hours 6:00am to 6:00pm, Monday to Saturday.
- Collections occurring more than once a week should be restricted to the hours 7:00am to 6:00pm, Monday to Saturday.
- Compaction should only be carried out while on the move.
- Routes that service entirely residential areas should be altered regularly to reduce early morning disturbance
- Noisy verbal communication between operators should be avoided where possible.

c. Bin Colour and Signage

All bins will be provided by the council contractor. Any replacement or repair of bins will need to be arranged with them. The below bin colours are specified by Australian Standard AS4123.72006:

- Garbage (general waste) bins shall have red lids with dark green or black body.
- Recycle bins shall have yellow lids with dark green or black body.
- Food organics bins shall have lime green lids with dark green or black body.
- Glass bins shall have purple lids with nature green body

These colours are recommendations only and it should be noted that council collection contractors often provide their own bins for collection. However, colour coding will be required to ensure bins are distinguishable reducing risks of contamination between streams.

Bins (on bin lid) and bin storage area will also include clear signage in line with industry standards. See an example of signage approved by Sustainability Victoria:



d. Internal Waste System

Adequate internal storage spaces will be provided within the school to enable the separation of waste (garbage, recycling, food and future glass). Bin will not be larger than 60L to allow for easy manual handling.

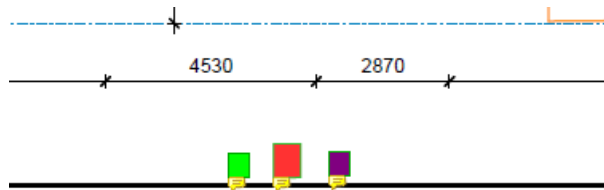
**ADVERTISED
PLAN**

4. Waste Collection and Methodology

Council collection is proposed for the development.

The school management or cleaner will roll out the bins to the kerbside along Gloucester Crescent. on the evening prior to collection day and put the bins back once empty.

The site will have enough kerbside space to present all bins with minimum 300mm between each bin – A maximum of 3 bins will be presented for collection as general waste and recycling will be collected on alternate fortnight



GLOUCESTER CRES.

Figure 2: Bin presentation on the kerbside for council collection.

The collection will require separate trucks for each waste stream.

All waste streams will be collected by Council, with pickups made once per week for FOGO and fortnightly for general waste and recycling, once per four weeks for glass.

Collection hours will be in accordance with EPA and the Greater Shepparton City Council's requirements, to minimise any traffic disturbance for staff or visitors entering or exiting the site.

**ADVERTISED
PLAN**

5. Communication Strategy

Building Management has the obligation to ensure that all individuals utilising the waste systems are adequately informed about the waste management system in place for the development, including precise instructions on where and how to appropriately dispose of each type of waste. It is strongly advised that this Waste Management Plan be electronically distributed to all tenants.

The waste collection contractor(s) will be responsible for providing educational resources to familiarise all waste system users with the development's waste management system. They will also offer guidance to ensure that each waste stream is properly separated and disposed of, with utmost care, aiming to minimize landfill waste and reduce the contamination of recyclable materials.

Building management will be responsible for coordinating any necessary waste management plan revision to address any unforeseen operational issues, legislative changes etc.

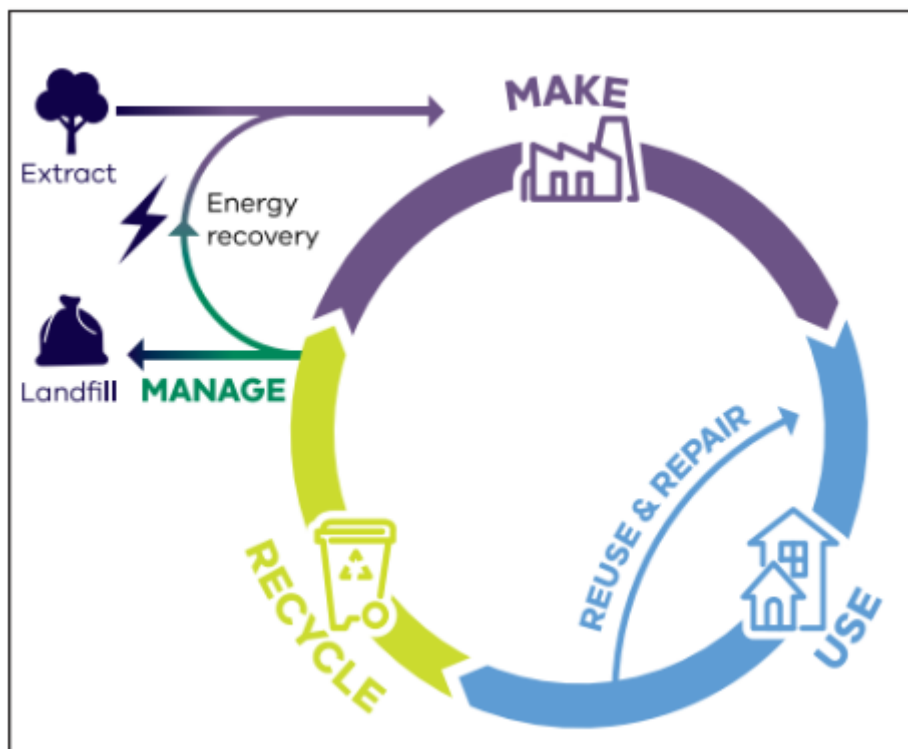
**ADVERTISED
PLAN**

6. Best Practice Waste Management

Released in 2020, Recycling Victoria: A New Economy by the Victorian Government outlines strategies aimed at curbing waste generation in Victoria and bolstering recycling and reprocessing efforts to mitigate environmental harm. This is a 10-year action plan.

Vital elements such as ongoing education and dedicated management services play a pivotal role in fostering sustained user engagement and adherence to the intended services and systems.

The future occupants of the development are expected to actively endorse this strategy whenever feasible, while also encouraging users to actively participate in minimising the ecological repercussions of waste. In particular, emphasis should be placed on embracing the principles of the circular economy, as illustrated in the figure below.



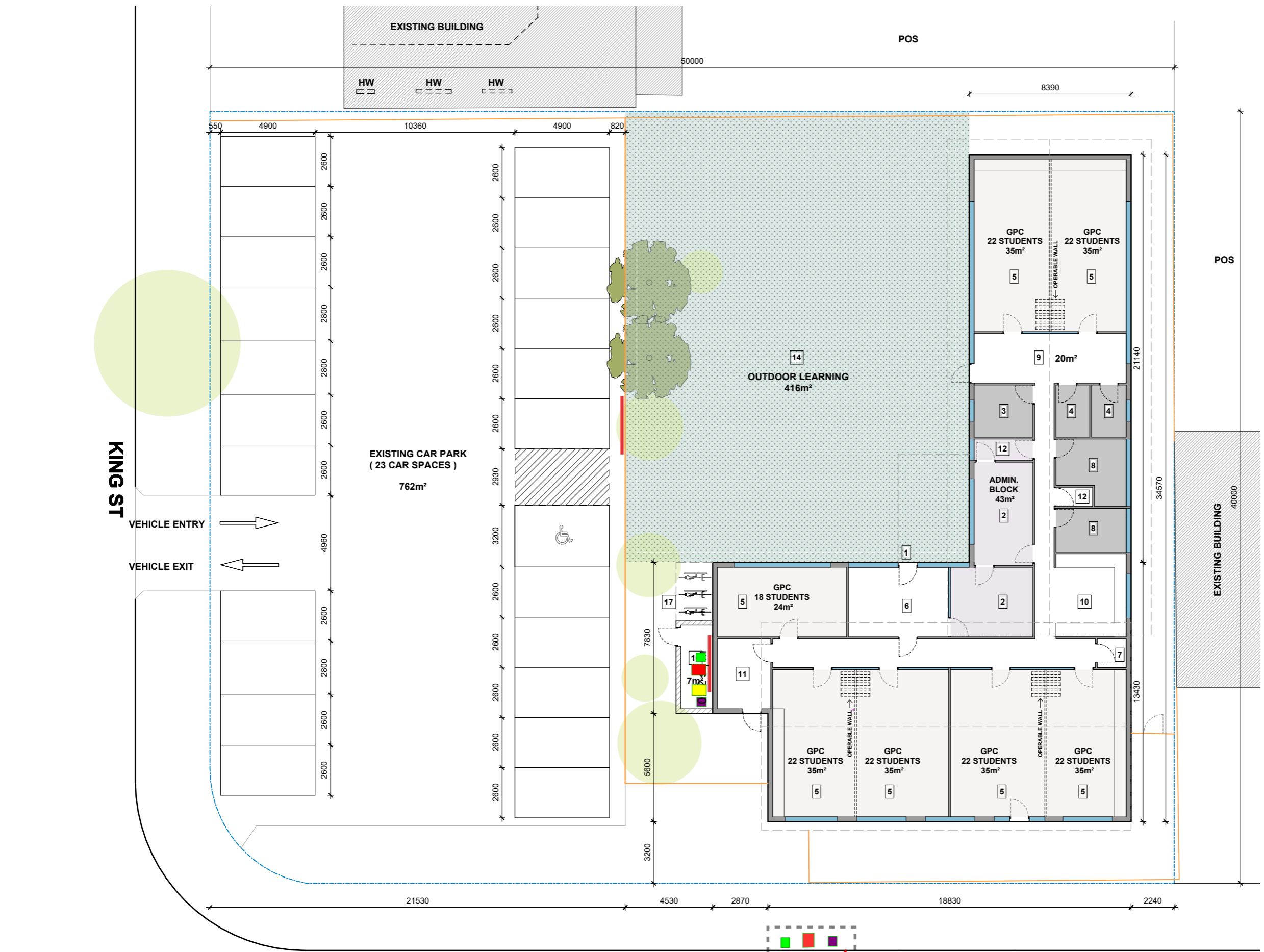
This transformative approach seeks to continually diminish the ecological footprint of production and consumption, while concurrently fostering economic growth through more efficient utilisation of natural resources.

**ADVERTISED
PLAN**



**ADVERTISED
PLAN**

Appendix A – Waste Drawings



- PLAN LEGEND**
1. MAIN ENTRANCE
 2. STAFF OFFICE
 3. DDA/UNISEX WC
 4. CHANGE ROOM
 5. GENERAL PURPOSE CLASSROOM
 6. FOYER
 8. TOILET BLOCK
 7. SERVICES ROOM
 9. BREAKOUT / COLLABORATIVE LEARNING
 10. KITCHEN
 11. SICK ROOM
 12. GENERAL STORE
 14. OUTDOOR LEARNING
 15. WASTE COLLECTION POINT
 16. WASTE REFUSE STORE
 17. SECURE COVERED BIKE STORE (6 BIKES)

- HW HABITABLE ROOM WINDOWS
- POS PRIVATE OPEN SPACE
- EXISTING FENCE
- - - ROOF ABOVE SHOWN DASHED
- - - TITLE BOUNDARY SHOWN INDICATIVELY (REFER TO LAND SURVEY)
- WALL/FENCE MOUNTED SIGNAGE

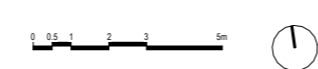
FOR REVIEW

ADVERTISED PLAN

GLOUCESTER CRES. Potential bin presentation location

NOTES:
 These drawings, plans and specifications and the copyright contained therein are the property of SEARCH STUDIO CO P/L and must not be used, including by reproducing, publishing or communicating to the public, either wholly or in part, without the express written permission of SEARCH STUDIO CO P/L.
 Do not scale drawings, contractors must verify all dimensions on site before commencing any work or preparing shop drawings.

REV	DATE	REASON FOR ISSUANCE	BY



PROJECT STATUS

SEARCH • STUDIO
 L4,80 Market Street, South Melbourne, VIC 3205
 P : 04 21 24 77 82 ACN 609538909
 E : ss@search-studio.com ARBV 18609
 W : search-studio.net BOAT 1465

PROJECT TITLE
PROPOSED PRIMARY SCHOOL
 1-3 GLOUCESTER CRESCENT, SHEPPARTON
 JOB NO DATE SCALE @ A1
26325 2026 APRIL 1:100

DRAWING TITLE
PROPOSED SITE PLAN

DWG NO.
SD01
 REV