

Traffix Group

This copied document to be made available for the sole purpose of enabling its consideration and review as part of a planning process under the Planning and Environment Act 1987. The document must not be used for any purpose which may breach any copyright

Traffic and Parking Management Plan

Approved School **ADVERTISED PLAN**
19-23 Horswood Road, Narre Warren North

Prepared for
Pared Limited

September 2025

G31830R-03D (TPMP)

ADVERTISED PLAN

Document Control

Our Reference: G31830R-03D (TPMP)

Issue No.	Type	Date	Prepared By	Approved By
A	Final	21/10/2024	S. Stephenson	L. Furness
B	Final	08/01/2025	S. Stephenson	L. Furness
C	DTP Comments	12/02/2025	S. Stephenson	L. Furness
D	Update	15/09/2025	S. Stephenson	L. Furness

AS/NZS ISO 45001-2018 Occupational Health & Safety Management Systems
 AS/NZS ISO 14001 Environmental Management Systems
 AS/NZS ISO 9001-2016 Quality Management Systems



COPYRIGHT: The ideas and material contained in this document are the property of Traffix Group (Traffix Group Pty Ltd – ABN 32 100 481 570). Use or copying of this document in whole or in part without the written permission of Traffix Group constitutes an infringement of copyright.

LIMITATION: This report has been prepared on behalf of and for the exclusive use of Traffix Group’s client and is subject to and issued in connection with the provisions of the agreement between Traffix Group and its client. Traffix Group accepts no liability or responsibility whatsoever for or in respect of any use of or reliance upon this report by any third party.

Table of Contents

- 1. Introduction..... 4
- 2. Proposal..... 5
 - 2.1. Transport for Victoria Conditions..... 7
- 3. Signage and Line Marking Details..... 8
- 4. Bus Services and Pick-up/Drop-off..... 8
- Appendix A Development Plans 9
- Appendix B Signage and Line Marking Plan 10

List of Appendices

- Appendix A Development Plans
- Appendix B Signage and Line Marking Plan

**ADVERTISED
PLAN**

1. Introduction

Traffix Group has been engaged by Pared Limited to prepare a Traffic and Parking Management Plan (TPMP) for the approved School at 19-23 Horswood Road, Narre Warren North. The development has received a Planning Permit (No. PA2302660).

This report and associated drawings have been prepared to address the permit condition which relates to the management of the on-site car parking areas.

A copy of the associated development plans is attached at Appendix A.

A signage and line marking plan is attached at Appendix B.

Specifically, this plan addresses conditions of Planning Permit PA2302660 listed below:

Traffic and Parking Management Plan

12. *Concurrent with the endorsement of plans, a traffic and parking management plan for all stages must be approved and endorsed by the responsible authority. The traffic and parking management plan must be prepared to the satisfaction of the responsible authority, be generally in accordance with the Traffic and Transport Assessment prepared by Traffix Group, dated 12 July 2024, but amended to show the following details:*
- a) *Any changes required by the detailed development plans.*
 - b) *Any changes required by the Head, Transport for Victoria conditions.*
 - c) *Signage and line markings at entry and exit points.*
 - d) *Details to address traffic and pedestrian movement and safety including:*
 - I. *Entry and exit signage locations.*
 - II. *Designated pick-up and drop-off areas with clear markings.*
 - III. *Pedestrian crossing treatment and location/s.*
 - IV. *Physical protection and clear markings for pedestrian walkways.*
 - e) *Details of ongoing bus transport services to be provided by the school for all students in both Stage 1 and Stage 2 of the school's operation.*

**ADVERTISED
PLAN**

2. Proposal

The approved development is for a new primary and secondary school (Years 3 to 12) on the subject site.

The school proceeds in two stages. From a traffic perspective, the main distinction is that in Stage 1, students are transported to the school by bus. There are three bus bays proposed within the front setback that will allow private school buses to drop-off and pick-up students.

In Stage 2, students can be transported by parents via private cars.

Staff and student numbers will progressively increase.

The school will provide the following parking facilities:

- 85 car spaces, comprising:
- 13 parallel drop-off/pick-up spaces across the two car parking areas.
- 72 car spaces, including 2 DDA car spaces.
- 3 bus bays within the front setback of the site.
- 80 bicycle spaces.

Vehicle access to the school will be via Horswood Road via two crossovers. The entry crossover is located at the site's north-east corner with this access to be serviced by a left-turn deceleration lane. The exit crossover is located towards the site's midpoint.

An emergency vehicle access point will be provided at the Horswood Road roundabout (at the location of the existing gate access). A network of service/emergency vehicle paths are provided around the school grounds.

During Stage 1, students will be transported by private school bus to/from Harkaway Hills College, as shown in the figure below. Parents will only be permitted to drop children off or pick them directly from the school outside of regular start and finish times of 8-9am and 3-4pm when the bus service is not operating. Examples of this is when a child is completing extra-circular activities or in after-school care.

At Stage 2, parents will be permitted to drop-off/pick-up children directly. This requires signalisation of the intersection of Horswood Road/Belgrave-Hallam Road to accommodate the school traffic.

The school has requested an extension of public Bus Route 841 during school pick up and drop off times to improve transportation in the area, however the school is not reliant on the extension and will function adequately without the extension of the bus route.

**ADVERTISED
PLAN**



Figure 1: Location of site relative to Harkaway Hills College Campus Allocation of Car Parking

**ADVERTISED
PLAN**

2.1. Transport for Victoria Conditions

Department of Transport and Planning (DTP) has reviewed application and offered no objection to the application subject to conditions. The Conditions are as follows:

- 1. Prior to the endorsement of plans, amended plans must be submitted to and approved by the Head, Transport for Victoria. When approved by the Head, Transport for Victoria, the plans must be endorsed by the Responsible Authority and will then form part of the permit. The plans must be drawn to scale with dimensions. The plans must be generally modified to show:*
- 2. The intersection of Horswood Road and Belgrave-Hallam Road to be signalised T-intersection.*
- 3. Unless otherwise agreed in writing by the Head, Transport for Victoria, prior to the commencement of stage 2 of the school's operation (i.e. once the students are allowed to be pick-up & drop-off via private passenger vehicles), the following roadworks on Horswood Road and Belgrave-Hallam Road must be completed at no cost to and to the satisfaction of the Head, Transport for Victoria:*
- 4. Traffic Signals at Horswood Road and Belgrave-Hallam Road intersection.*
- 5. Unless otherwise agreed in writing by the Head, Transport for Victoria, prior to the commencement of any roadworks, Functional Layout Plans (FLP) generally consistent with the submitted conceptual FLP prepared by Traffix Group (dwg. no. G31830-01-01, dated 05/08/2022) along with a functional Road Safety Audit must be prepared and submitted to the satisfaction of the Head, Transport for Victoria. When approved by the Head, Transport for Victoria, the plans must be endorsed by the Responsible Authority and will then form part of the permit.*
- 6. Subsequent to the approval of the FLP and prior to the commencement of any roadworks within the arterial road reserve the applicant must submit the detailed engineering design plans to the Head, Transport for Victoria for review and approval. The detailed design plans must be prepared generally in accordance with the approved FLP to the satisfaction of the Head, Transport for Victoria.*
- 7. Unless otherwise agreed in writing by the Head, Transport for Victoria, prior to the occupation and operation of stage 2 of the school, the buildings and works shown on the endorsed plans must be constructed to the satisfaction of and at no cost to the Head, Transport for Victoria.*

The conditions pertain to upgrading the intersection of Horswood Road and Belgrave-Hallam Road to a signalised T-intersection. However, this is not within the scope of the Traffic and Parking Management Plan. A detailed FLP will be submitted for approval at a later date.

**ADVERTISED
PLAN**

3. Signage and Line Marking Details

The plans which identify the schedule of all proposed signage and line marking within the on-site parking areas are provided at Appendix B.

The plans detail:

- 'Entry' and 'Exit' signage
- signage to indicate to parents where 'drop-off and pick-up' activities are to occur and signed P2 min,
- line marked zebra crossings, accompanied by appropriate signage to warn drivers of pedestrian priority,
- line marking for DDA car spaces, including chevron line marking, disabled space symbol and bollard in accordance with AS2890.6-2022, and
- directional line marking and signage inside the site at the vehicle access indicating one-way traffic flow within the carpark.
- Footpaths and pedestrian crossings have been provided around the carpark. Pedestrian access to the site is available to Horswood Road via a separate pedestrian pathway is provided. The separated internal pedestrian pathway is clearly shown on the plans.

4. Bus Services and Pick-up/Drop-off

Under Stage 1A, 189 students will travel to and from the site via private buses organised by the school. Parents will only be permitted to drop off or pick up children directly from the school outside the regular start and finish times of 8–9am and 3–4pm, when the bus service is not operating. Examples of this include when a student is attending extra-curricular activities or enrolled in after-school care.

Under Stage 1B, student numbers will increase to 239 and a total of 27 staff members. Students will continue to travel to and from the site via the school-operated bus service only with private pick-up and drop off only permitted outside of regular school start and finish times. Pared Limited has informed Traffix Group that the school plans to use one 25-seater bus. Based on a student population of 239, it was calculated that approximately 198 students would require the bus service, accounting for early and late arrivals, children of staff members, and daily absences. A single bus would complete a maximum of eight trips, with each round trip taking approximately 12 minutes.

At Stage 2 (ultimate conditions), the number of students and staff will remain the same as Stage 1B. Under Stage 2, parents would be permitted to transfer students to the site via private vehicle if required. The bus loop will continue to operate, either providing transportation to the sister school, key destinations, or directly to/from home. If more bus trips are needed, the school will rent additional buses and supply drivers to ensure adequate transport options. Stage 2 of the works will not commence until the Belgrave-Hallam Road/Horswood Road intersection upgrades works are complete.



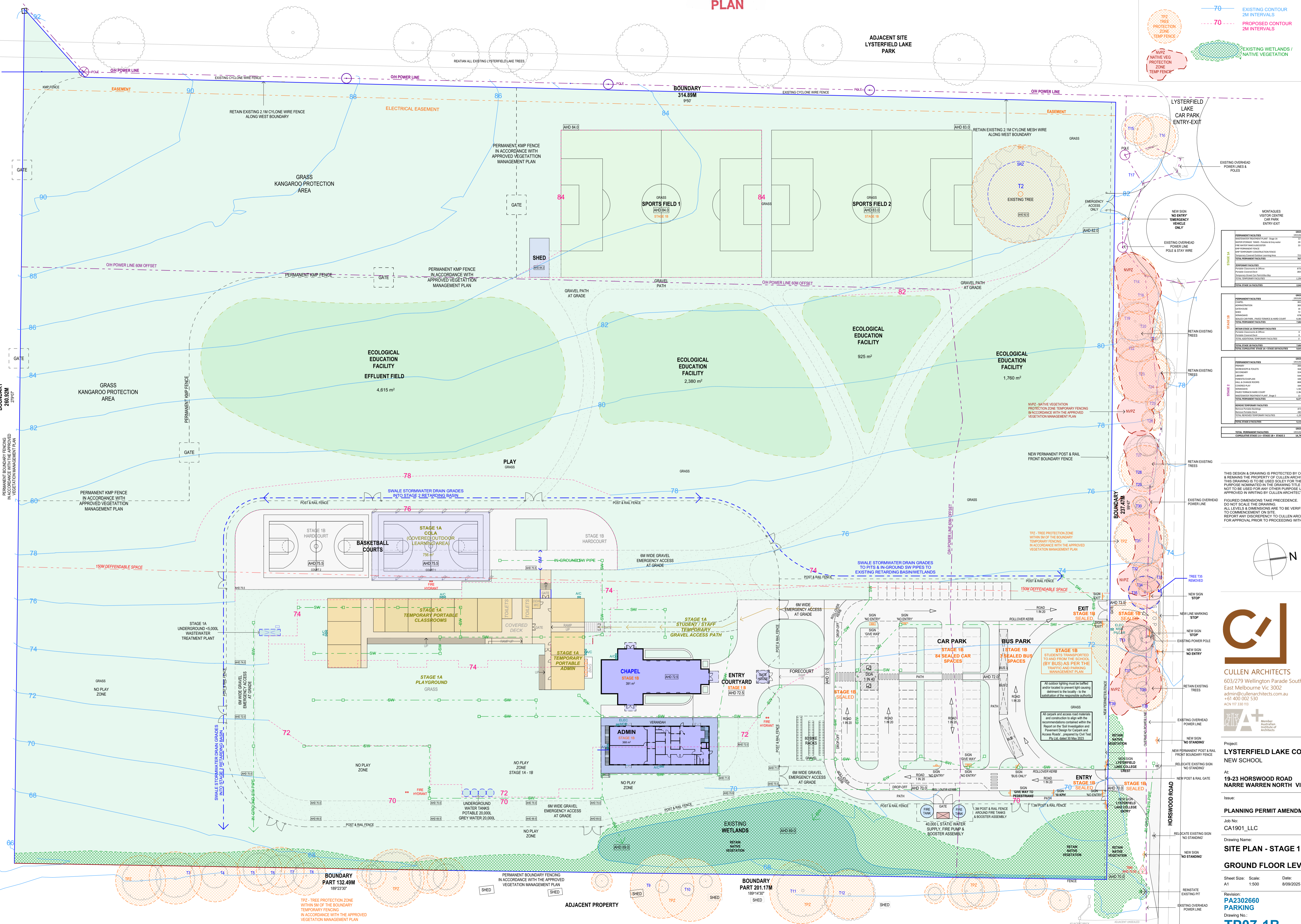
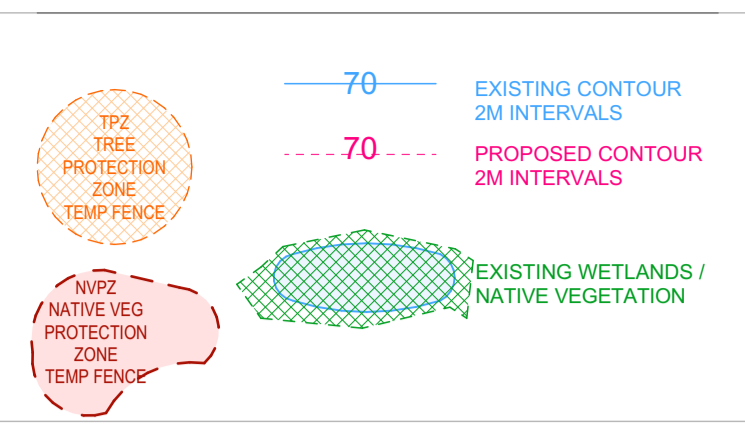
Appendix A

Development Plans

**ADVERTISED
PLAN**

ADVERTISED PLAN

LEGEND



STAGE 1A	GRASS FLOOR AREA (m ²)
PERMANENT FACILITIES	200
PROPOSED FACILITIES	200
TOTAL STAGE 1A FACILITIES	400

STAGE 1B	GRASS FLOOR AREA (m ²)
PERMANENT FACILITIES	200
PROPOSED FACILITIES	200
TOTAL STAGE 1B FACILITIES	400

STAGE 2	GRASS FLOOR AREA (m ²)
PERMANENT FACILITIES	200
PROPOSED FACILITIES	200
TOTAL STAGE 2 FACILITIES	400

TOTAL PERMANENT FACILITIES	GRASS FLOOR AREA (m ²)
STAGE 1A	400
STAGE 1B	400
STAGE 2	400
TOTAL PERMANENT FACILITIES	1,200

THIS DESIGN AND DRAWING IS PROTECTED BY COPYRIGHT & REMAINS THE PROPERTY OF CULLEN ARCHITECTS. THIS DRAWING IS TO BE USED SOLELY FOR THE PURPOSES INDICATED IN THE DRAWING TITLE AND IS NOT TO BE USED FOR ANY OTHER PURPOSE UNLESS APPROVED IN WRITING BY CULLEN ARCHITECTS.

FIGURED DIMENSIONS TAKE PRECEDENCE. DO NOT SCALE THE DRAWING. ALL LEVELS & DIMENSIONS ARE TO BE VERIFIED PRIOR TO COMMENCEMENT ON SITE. REPORT ANY DISCREPANCY TO CULLEN ARCHITECTS FOR APPROVAL PRIOR TO PROCEEDING WITH WORKS.



Project:
**LYSTERFIELD LAKE COLLEGE
 NEW SCHOOL**

At:
**19-23 HORSWOOD ROAD
 NARRE WARREN NORTH VIC**

Issue:
PLANNING PERMIT AMENDMENT

Job No:
CA1901_LLC

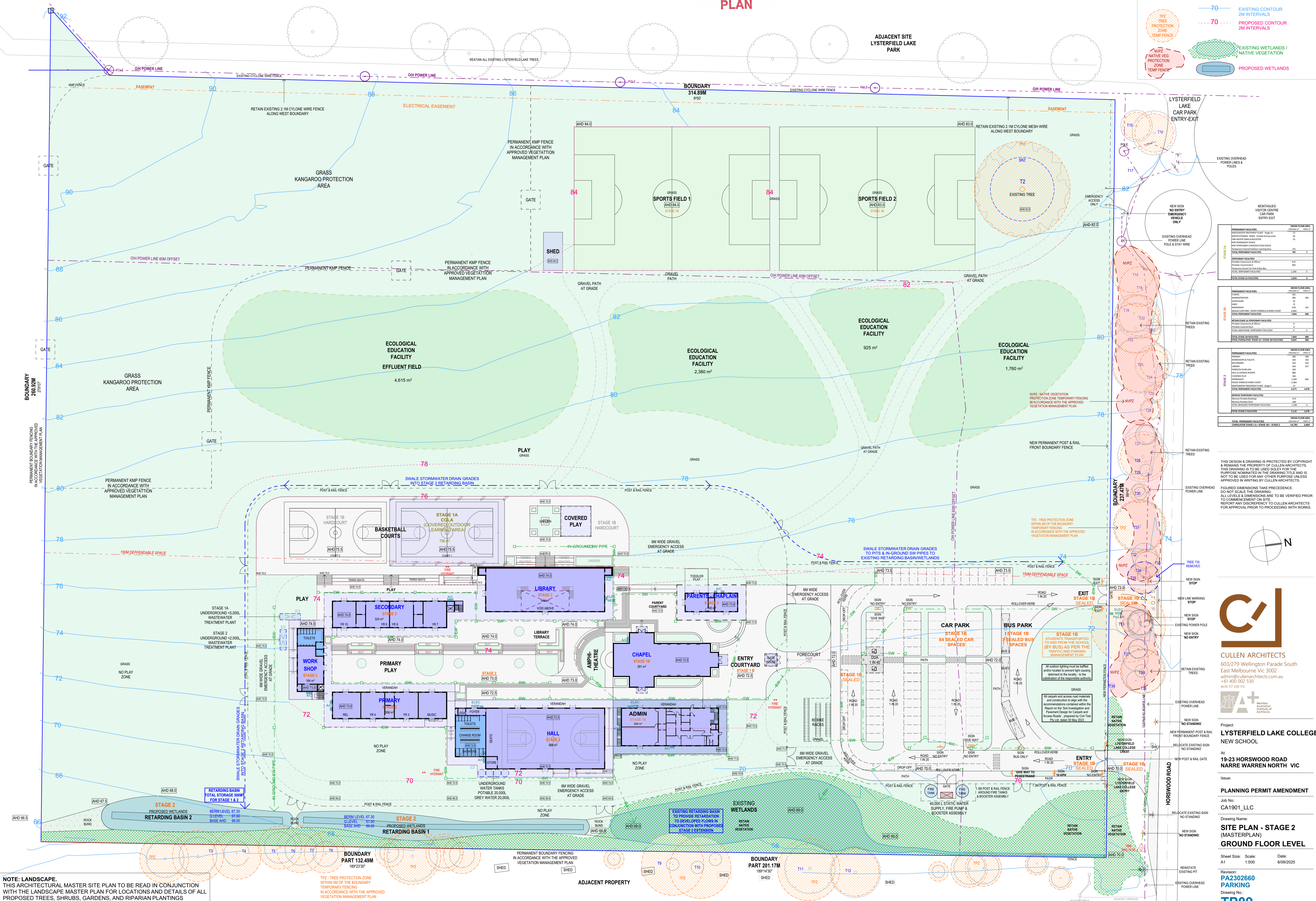
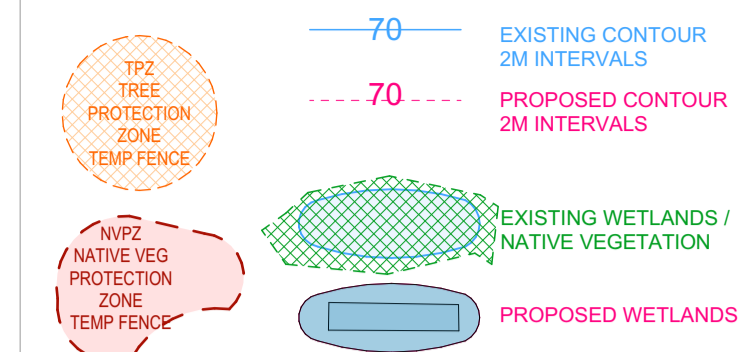
Drawing Name:
**SITE PLAN - STAGE 1B
 GROUND FLOOR LEVEL**

Sheet Size: Scale: Date:
 A1 1:500 6/08/2025

Revision:
**PA2302660
 PARKING**
 Drawing No:
TP07-1B

ADVERTISED PLAN

LEGEND



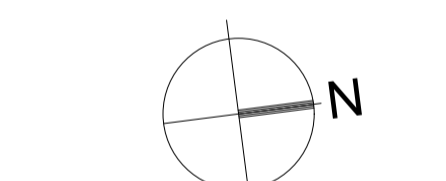
STAGE 1A	GRASS FLOOR AREA (m ²)
PERMANENT FACILITIES	300
PROPOSED FACILITIES	300
TOTAL STAGE 1A FACILITIES	600

STAGE 1B	GRASS FLOOR AREA (m ²)
PERMANENT FACILITIES	300
PROPOSED FACILITIES	300
TOTAL STAGE 1B FACILITIES	600

STAGE 2	GRASS FLOOR AREA (m ²)
PERMANENT FACILITIES	300
PROPOSED FACILITIES	300
TOTAL STAGE 2 FACILITIES	600

TOTAL PERMANENT FACILITIES	GRASS FLOOR AREA (m ²)
PERMANENT FACILITIES	300
PROPOSED FACILITIES	300
TOTAL PERMANENT FACILITIES	600

THIS DESIGN AND DRAWING IS PROTECTED BY COPYRIGHT & REMAINS THE PROPERTY OF CULLEN ARCHITECTS. THIS DRAWING IS TO BE USED SOLELY FOR THE PURPOSES INDICATED IN THE DRAWING TITLE AND IS NOT TO BE USED FOR ANY OTHER PURPOSE UNLESS APPROVED IN WRITING BY CULLEN ARCHITECTS.



CULLEN ARCHITECTS
 603/279 Wellington Parade South
 East Melbourne Vic 3002
 admin@cullenarchitects.com.au
 +61 400 000 530
 ACN 117 330 113

Project:
**LYSTERFIELD LAKE COLLEGE
 NEW SCHOOL**

At:
**19-23 HORSWOOD ROAD
 NARRE WARREN NORTH VIC**

Issue:
PLANNING PERMIT AMENDMENT

Job No:
CA1901_LLC

Drawing Name:
**SITE PLAN - STAGE 2
 (MASTERPLAN)
 GROUND FLOOR LEVEL**

Sheet Size: Scale: Date:
 A1 1:500 6/08/2025

Revision:
**PA2302660
 PARKING**

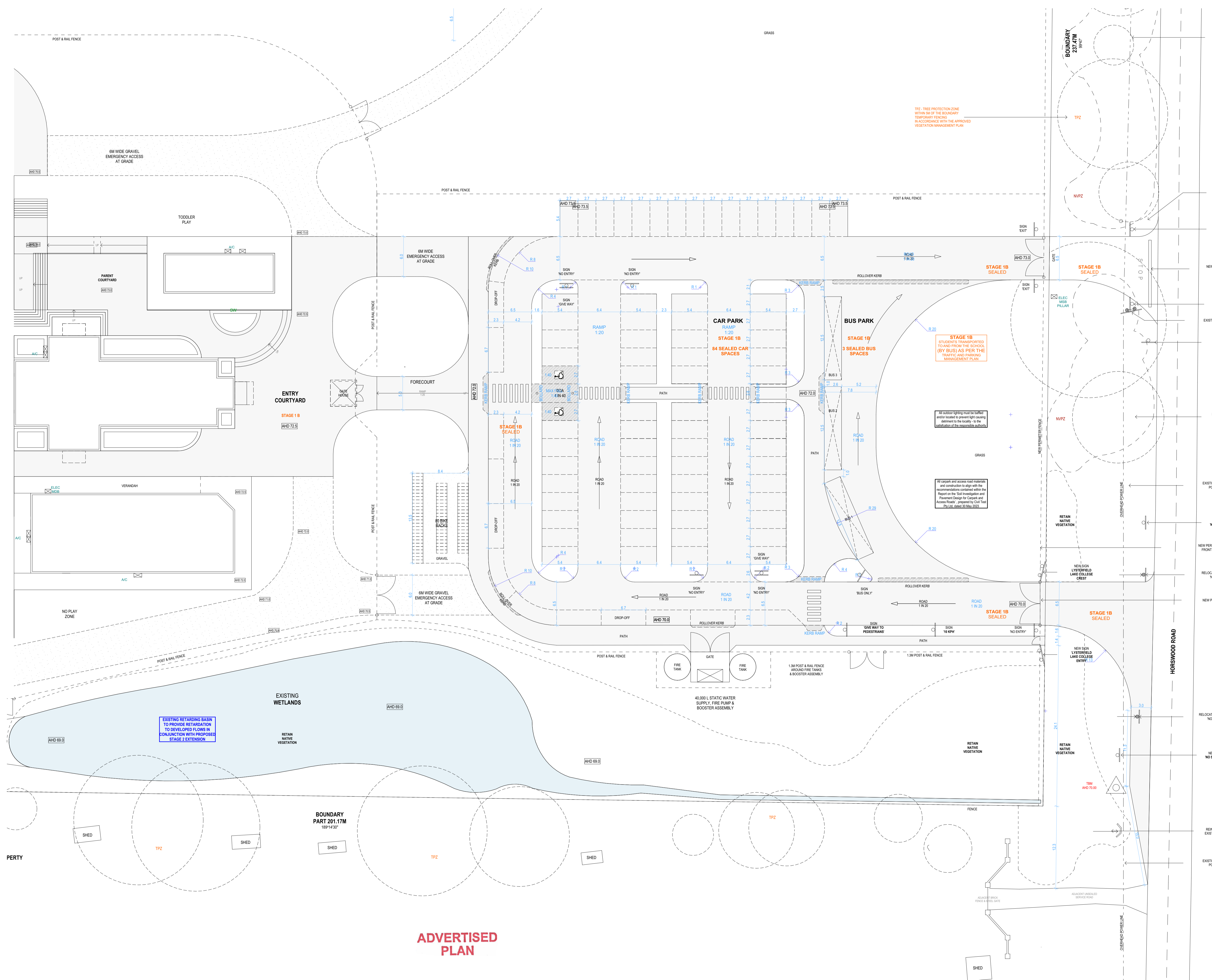
Drawing No:
TP09

NOTE: LANDSCAPE.
 THIS ARCHITECTURAL MASTER SITE PLAN TO BE READ IN CONJUNCTION WITH THE LANDSCAPE MASTER PLAN FOR LOCATIONS AND DETAILS OF ALL PROPOSED TREES, SHRUBS, GARDENS, AND RIPARIAN PLANTINGS

TPZ - TREE PROTECTION ZONE WITHIN 5M OF THE BOUNDARY TEMPORARY FENCING IN ACCORDANCE WITH THE APPROVED VEGETATION MANAGEMENT PLAN

PERMANENT BOUNDARY FENCING IN ACCORDANCE WITH THE APPROVED VEGETATION MANAGEMENT PLAN

ADJACENT PROPERTY



TPZ - TREE PROTECTION ZONE WITHIN 5M OF THE BOUNDARY TEMPORARY FENCING IN ACCORDANCE WITH THE APPROVED VEGETATION MANAGEMENT PLAN

STAGE 1B STUDENTS TRANSPORTED TO AND FROM THE SCHOOL (BY BUS) AS PER THE TRAFFIC AND PARKING MANAGEMENT PLAN

All outdoor lighting must be shielded and/or located to prevent light causing detriment to the locality - to the satisfaction of the responsible authority

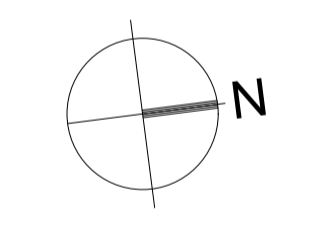
All carpark and access road materials and construction to align with the recommendations contained within the Report on the Soil Investigation and Pavement Design for Carpark and Access Roads - prepared by Civil Team Pty Ltd dated 30 May 2023

EXISTING RETARDING BASIN TO PROVIDE RETARDATION TO DEVELOPED FLOWS IN CONJUNCTION WITH PROPOSED STAGE 2 EXTENSION

ADVERTISED PLAN

THIS DESIGN AND DRAWING IS PROTECTED BY COPYRIGHT & REMAINS THE PROPERTY OF CULLEN ARCHITECTS. THIS DRAWING IS TO BE USED SOLELY FOR THE PURPOSE INDICATED IN THE DRAWING TITLE AND IS NOT TO BE USED FOR ANY OTHER PURPOSE UNLESS APPROVED IN WRITING BY CULLEN ARCHITECTS.

FIGURED DIMENSIONS TAKE PRECEDENCE. DO NOT SCALE THE DRAWING. ALL LEVELS & DIMENSIONS ARE TO BE VERIFIED PRIOR TO COMMENCEMENT ON SITE. REPORT ANY DISCREPANCY TO CULLEN ARCHITECTS FOR APPROVAL PRIOR TO PROCEEDING WITH WORKS.



CULLEN ARCHITECTS
 603/279 Wellington Parade South
 East Melbourne Vic 3002
 admin@cullenarchitects.com.au
 +61 401 002 230
 ACN 117 330 113



Project:
LYSTERFIELD LAKE COLLEGE NEW SCHOOL

At:
19-23 HORSWOOD ROAD NARRE WARREN NORTH VIC

Issue:
PLANNING PERMIT AMENDMENT

Job No:
 CA1901_LLC
 Drawing Name:
CARPARK SETOUT PLAN STAGE 1B

Sheet Size: Scale: Date:
 A1 1:250 01/08/2025

Revision:
PA2302660 PARKING
 Drawing No.:
TP16

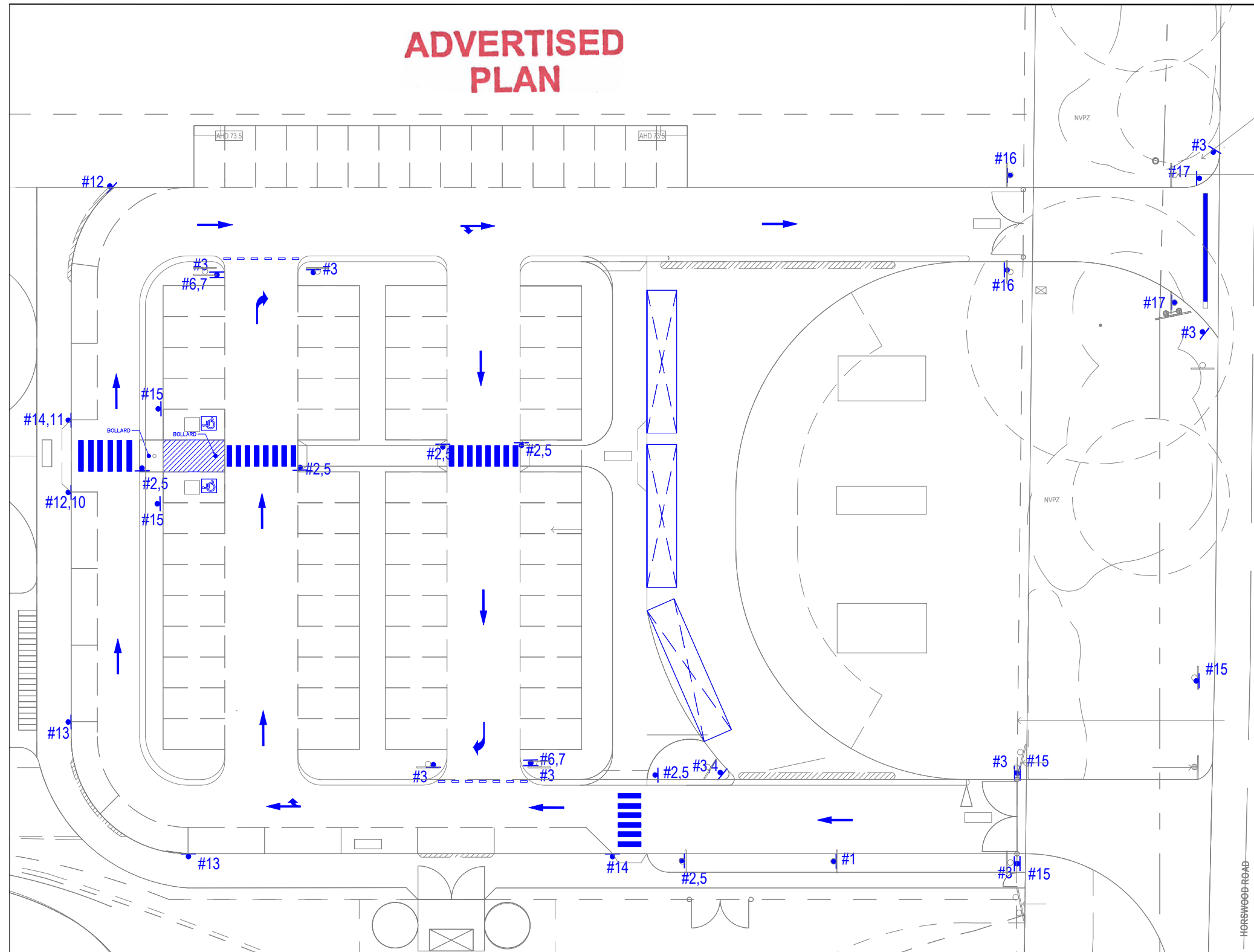


Appendix B

Signage and Line Marking Plan

**ADVERTISED
PLAN**

ADVERTISED PLAN



SIGN SCHEDULE

#1		R4-1-10	#10		R5-15-1(R)
#2		R2-10	#11		R5-15-1(L)
#3		R2-4	#12		R5-1-15(L)
#4		R9-2	#13		R5-1-15(LR)
#5		R3-1	#14		R5-1-15(R)
#6		R1-2	#15		
#7		R2-14(R)	#16		
#8		R5-31(L)	#17		R1-1
#9		R5-31(R)	#18		R5-15-1(LR)

Note:

- Sign locations are indicative only and exact location to be determined on installation
- Arrow linemarking to be provided with dimensions which accord with Figure 4.3 of AS2890.1-2004
- Parking space line marking as dimensioned with 100mm thick white lines in accordance with Clause 7.1 of AS1742.11-2016
- Text marking for allocated car spaces to be 150mm high
- Give way line marking as dimensioned with 150mm thick, 600mm long white lines with 300mm spaces in accordance with Clause 5.3 of AS1742.2-2022
- Zebra crossing as dimensioned with 600mm thick white lines with 600mm spaces in accordance with Clause 2.2 of AS1742.10-2009

REV	DATE	NOTES	DESIGNED BY	CHECKED BY
A	17/10/2024	CPMP	S. STEPHENSON	L. FURNESS
B	09/09/2025	CPMP	S. STEPHENSON	L. FURNESS

19-21 HORSWOOD ROAD, NARRE WARREN NORTH
PARKING MANAGEMENT PLAN
PROPOSED SCHOOL

GENERAL NOTES:
 BASE INFORMATION FROM CAD FILE
 "CA1901_LLC_250908_Parking
 Amendment_CAR PARK LAYOUT.dwg"

FILE NAME: G31830-03B
SHEET NO.: 01



SCALE: 1:400 (A3)

COPYRIGHT: The ideas and material contained in this document are the property of Traffic Group (Traffic Group Pty Ltd - ABN 32 100 481 570). Use or copying of this document in whole or in part without the written permission of Traffic Group constitutes an infringement of copyright.

Traffic Group
 Level 28, 459 Collins St, MELBOURNE VIC 3000
 T: (03) 9822 2888
 www.trafficgroup.com.au