

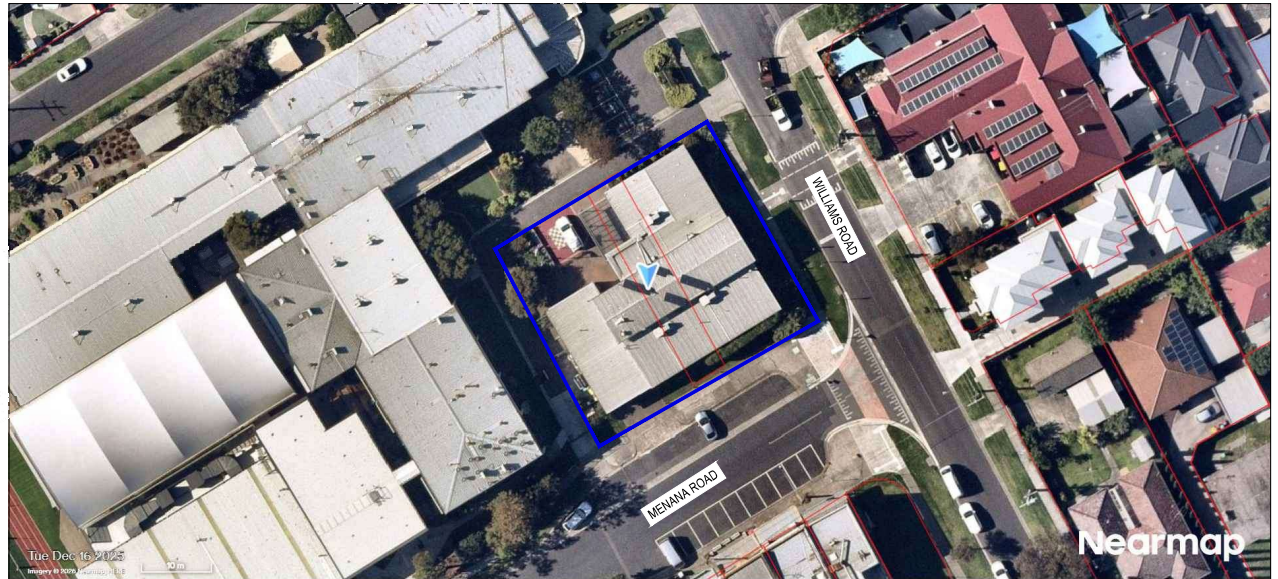
GLENROY ARTS BUILDING

35 WILLIAM STREET, GLENROY VIC

CIVIL DRAWINGS

**ADVERTISED
PLAN**

DRAWING INDEX	
DRAWING NUMBER	DRAWING TITLE
C000	FACE SHEET, DRAWING INDEX AND LOCALITY PLAN
C001	GENERAL NOTES
C010	EXISTING SITE PLAN
C020	CIVIL PLAN
C050	TYPICAL DETAILS - SHEET 1
C051	TYPICAL DETAILS - SHEET 2



This copied document to be made available for the sole purpose of enabling its consideration and review as part of a planning process under the Planning and Environment Act 1987. The document must not be used for any purpose which may breach any copyright

LOCALITY PLAN

N.T.S.

<small>DISCLAIMER:</small> Copyright of this drawing is vested in BCE DESIGN and this drawing file is not to be reprinted or copied in whole or in part, in any form, without the prior written approval of BCE DESIGN. The recipient is responsible for ensuring that they review the status of the drawing, and are in receipt of the current revision prior to use, except when a signed changeover has been executed. BCE DESIGN is not responsible for dimensioning and engineering. This drawing has not been conducted to a level of dimensional accuracy suitable for fabrication, the dimensioner is responsible for production of fabricated items. Drawings where these are required, this drawing has been produced for the named client for use on the project and is not to be used for any other purpose.				<small>CLIENT:</small> PENOLA CATHOLIC COLLEGE				<small>PROJECT NAME:</small> GLENROY ARTS BUILDING 35 WILLIAM ST, GLENROY VIC 3046				<small>DRAWING TITLE:</small> FACE SHEET, DRAWING INDEX AND LOCALITY PLAN							
<small>SCALE:</small> N.T.S.				<small>DATE:</small> JAN 2025				<small>DESIGNER:</small> V.K.				<small>CHECKER:</small> V.K.				<small>APPROVER:</small> J.T.			
<small>SCALE INDICATED FOR REFERENCE ONLY. DO NOT SCALE DRAWING.</small>				<small>PROJECT NUMBER:</small> 243703				<small>DRAWING NO.:</small> C000				<small>REVISION:</small> P1							
<small>SCALE:</small> N.T.S.				<small>DATE:</small> JAN 2025				<small>DESIGNER:</small> V.K.				<small>CHECKER:</small> V.K.				<small>APPROVER:</small> J.T.			
<small>SCALE:</small> N.T.S.				<small>DATE:</small> JAN 2025				<small>DESIGNER:</small> V.K.				<small>CHECKER:</small> V.K.				<small>APPROVER:</small> J.T.			
<small>SCALE:</small> N.T.S.				<small>DATE:</small> JAN 2025				<small>DESIGNER:</small> V.K.				<small>CHECKER:</small> V.K.				<small>APPROVER:</small> J.T.			
<small>SCALE:</small> N.T.S.				<small>DATE:</small> JAN 2025				<small>DESIGNER:</small> V.K.				<small>CHECKER:</small> V.K.				<small>APPROVER:</small> J.T.			
<small>SCALE:</small> N.T.S.				<small>DATE:</small> JAN 2025				<small>DESIGNER:</small> V.K.				<small>CHECKER:</small> V.K.				<small>APPROVER:</small> J.T.			
<small>SCALE:</small> N.T.S.				<small>DATE:</small> JAN 2025				<small>DESIGNER:</small> V.K.				<small>CHECKER:</small> V.K.				<small>APPROVER:</small> J.T.			
<small>SCALE:</small> N.T.S.				<small>DATE:</small> JAN 2025				<small>DESIGNER:</small> V.K.				<small>CHECKER:</small> V.K.				<small>APPROVER:</small> J.T.			
<small>SCALE:</small> N.T.S.				<small>DATE:</small> JAN 2025				<small>DESIGNER:</small> V.K.				<small>CHECKER:</small> V.K.				<small>APPROVER:</small> J.T.			
<small>SCALE:</small> N.T.S.				<small>DATE:</small> JAN 2025				<small>DESIGNER:</small> V.K.				<small>CHECKER:</small> V.K.				<small>APPROVER:</small> J.T.			
<small>SCALE:</small> N.T.S.				<small>DATE:</small> JAN 2025				<small>DESIGNER:</small> V.K.				<small>CHECKER:</small> V.K.				<small>APPROVER:</small> J.T.			
<small>SCALE:</small> N.T.S.				<small>DATE:</small> JAN 2025				<small>DESIGNER:</small> V.K.				<small>CHECKER:</small> V.K.				<small>APPROVER:</small> J.T.			
<small>SCALE:</small> N.T.S.				<small>DATE:</small> JAN 2025				<small>DESIGNER:</small> V.K.				<small>CHECKER:</small> V.K.				<small>APPROVER:</small> J.T.			
<small>SCALE:</small> N.T.S.				<small>DATE:</small> JAN 2025				<small>DESIGNER:</small> V.K.				<small>CHECKER:</small> V.K.				<small>APPROVER:</small> J.T.			
<small>SCALE:</small> N.T.S.				<small>DATE:</small> JAN 2025				<small>DESIGNER:</small> V.K.				<small>CHECKER:</small> V.K.				<small>APPROVER:</small> J.T.			
<small>SCALE:</small> N.T.S.				<small>DATE:</small> JAN 2025				<small>DESIGNER:</small> V.K.				<small>CHECKER:</small> V.K.				<small>APPROVER:</small> J.T.			
<small>SCALE:</small> N.T.S.				<small>DATE:</small> JAN 2025				<small>DESIGNER:</small> V.K.				<small>CHECKER:</small> V.K.				<small>APPROVER:</small> J.T.			
<small>SCALE:</small> N.T.S.				<small>DATE:</small> JAN 2025				<small>DESIGNER:</small> V.K.				<small>CHECKER:</small> V.K.				<small>APPROVER:</small> J.T.			
<small>SCALE:</small> N.T.S.				<small>DATE:</small> JAN 2025				<small>DESIGNER:</small> V.K.				<small>CHECKER:</small> V.K.				<small>APPROVER:</small> J.T.			
<small>SCALE:</small> N.T.S.				<small>DATE:</small> JAN 2025				<small>DESIGNER:</small> V.K.				<small>CHECKER:</small> V.K.				<small>APPROVER:</small> J.T.			
<small>SCALE:</small> N.T.S.				<small>DATE:</small> JAN 2025				<small>DESIGNER:</small> V.K.				<small>CHECKER:</small> V.K.				<small>APPROVER:</small> J.T.			
<small>SCALE:</small> N.T.S.				<small>DATE:</small> JAN 2025				<small>DESIGNER:</small> V.K.				<small>CHECKER:</small> V.K.				<small>APPROVER:</small> J.T.			
<small>SCALE:</small> N.T.S.				<small>DATE:</small> JAN 2025				<small>DESIGNER:</small> V.K.				<small>CHECKER:</small> V.K.				<small>APPROVER:</small> J.T.			
<small>SCALE:</small> N.T.S.				<small>DATE:</small> JAN 2025				<small>DESIGNER:</small> V.K.				<small>CHECKER:</small> V.K.				<small>APPROVER:</small> J.T.			
<small>SCALE:</small> N.T.S.				<small>DATE:</small> JAN 2025				<small>DESIGNER:</small> V.K.				<small>CHECKER:</small> V.K.				<small>APPROVER:</small> J.T.			
<small>SCALE:</small> N.T.S.				<small>DATE:</small> JAN 2025				<small>DESIGNER:</small> V.K.				<small>CHECKER:</small> V.K.				<small>APPROVER:</small> J.T.			
<small>SCALE:</small> N.T.S.				<small>DATE:</small> JAN 2025				<small>DESIGNER:</small> V.K.				<small>CHECKER:</small> V.K.				<small>APPROVER:</small> J.T.			
<small>SCALE:</small> N.T.S.				<small>DATE:</small> JAN 2025				<small>DESIGNER:</small> V.K.				<small>CHECKER:</small> V.K.				<small>APPROVER:</small> J.T.			
<small>SCALE:</small> N.T.S.				<small>DATE:</small> JAN 2025				<small>DESIGNER:</small> V.K.				<small>CHECKER:</small> V.K.				<small>APPROVER:</small> J.T.			
<small>SCALE:</small> N.T.S.				<small>DATE:</small> JAN 2025				<small>DESIGNER:</small> V.K.				<small>CHECKER:</small> V.K.				<small>APPROVER:</small> J.T.			
<small>SCALE:</small> N.T.S.				<small>DATE:</small> JAN 2025				<small>DESIGNER:</small> V.K.				<small>CHECKER:</small> V.K.				<small>APPROVER:</small> J.T.			
<small>SCALE:</small> N.T.S.				<small>DATE:</small> JAN 2025				<small>DESIGNER:</small> V.K.				<small>CHECKER:</small> V.K.				<small>APPROVER:</small> J.T.			
<small>SCALE:</small> N.T.S.				<small>DATE:</small> JAN 2025				<small>DESIGNER:</small> V.K.				<small>CHECKER:</small> V.K.				<small>APPROVER:</small> J.T.			
<small>SCALE:</small> N.T.S.				<small>DATE:</small> JAN 2025				<small>DESIGNER:</small> V.K.				<small>CHECKER:</small> V.K.				<small>APPROVER:</small> J.T.			
<small>SCALE:</small> N.T.S.				<small>DATE:</small> JAN 2025				<small>DESIGNER:</small> V.K.				<small>CHECKER:</small> V.K.				<small>APPROVER:</small> J.T.			
<small>SCALE:</small> N.T.S.				<small>DATE:</small> JAN 2025				<small>DESIGNER:</small> V.K.				<small>CHECKER:</small> V.K.				<small>APPROVER:</small> J.T.			
<small>SCALE:</small> N.T.S.				<small>DATE:</small> JAN 2025				<small>DESIGNER:</small> V.K.				<small>CHECKER:</small> V.K.				<small>APPROVER:</small> J.T.			
<small>SCALE:</small> N.T.S.				<small>DATE:</small> JAN 2025				<small>DESIGNER:</small> V.K.				<small>CHECKER:</small> V.K.				<small>APPROVER:</small> J.T.			
<small>SCALE:</small> N.T.S.				<small>DATE:</small> JAN 2025				<small>DESIGNER:</small> V.K.				<small>CHECKER:</small> V.K.				<small>APPROVER:</small> J.T.			
<small>SCALE:</small> N.T.S.				<small>DATE:</small> JAN 2025				<small>DESIGNER:</small> V.K.				<small>CHECKER:</small> V.K.				<small>APPROVER:</small> J.T.			
<small>SCALE:</small> N.T.S.				<small>DATE:</small> JAN 2025				<small>DESIGNER:</small> V.K.				<small>CHECKER:</small> V.K.				<small>APPROVER:</small> J.T.			
<small>SCALE:</small> N.T.S.				<small>DATE:</small> JAN 2025				<small>DESIGNER:</small> V.K.				<small>CHECKER:</small> V.K.				<small>APPROVER:</small> J.T.			
<small>SCALE:</small> N.T.S.				<small>DATE:</small> JAN 2025				<small>DESIGNER:</small> V.K.				<small>CHECKER:</small> V.K.				<small>APPROVER:</small> J.T.			
<small>SCALE:</small> N.T.S.				<small>DATE:</small> JAN 2025				<small>DESIGNER:</small> V.K.				<small>CHECKER:</small> V.K.				<small>APPROVER:</small> J.T.			
<small>SCALE:</small> N.T.S.				<small>DATE:</small> JAN 2025				<small>DESIGNER:</small> V.K.				<small>CHECKER:</small> V.K.				<small>APPROVER:</small> J.T.			
<small>SCALE:</small> N.T.S.				<small>DATE:</small> JAN 2025				<small>DESIGNER:</small> V.K.				<small>CHECKER:</small> V.K.				<small>APPROVER:</small> J.T.			
<small>SCALE:</small> N.T.S.				<small>DATE:</small> JAN 2025				<small>DESIGNER:</small> V.K.				<small>CHECKER:</small> V.K.				<small>APPROVER:</small> J.T.			
<small>SCALE:</small> N.T.S.				<small>DATE:</small> JAN 2025				<small>DESIGNER:</small> V.K.				<small>CHECKER:</small> V.K.				<small>APPROVER:</small> J.T.			
<small>SCALE:</small> N.T.S.				<small>DATE:</small> JAN 2025				<small>DESIGNER:</small> V.K.				<small>CHECKER:</small> V.K.				<small>APPROVER:</small> J.T.			
<small>SCALE:</small> N.T.S.				<small>DATE:</small> JAN 2025				<small>DESIGNER:</small> V.K.				<small>CHECKER:</small> V.K.				<small>APPROVER:</small> J.T.			
<small>SCALE:</small> N.T.S.				<small>DATE:</small> JAN 2025				<small>DESIGNER:</small> V.K.				<small>CHECKER:</small> V.K.				<small>APPROVER:</small> J.T.			
<small>SCALE:</small> N.T.S.				<small>DATE:</small> JAN 2025				<small>DESIGNER:</small> V.K.				<small>CHECKER:</small> V.K.				<small>APPROVER:</small> J.T.			
<small>SCALE:</small> N.T.S.				<small>DATE:</small> JAN 2025				<small>DESIGNER:</small> V.K.				<small>CHECKER:</small> V.K.				<small>APPROVER:</small> J.T.			
<small>SCALE:</small> N.T.S.				<small>DATE:</small> JAN 2025				<small>DESIGNER:</small> V.K.				<small>CHECKER:</small> V.K.				<small>APPROVER:</small> J.T.			
<small>SCALE:</small> N.T.S.				<small>DATE:</small> JAN 2025				<small>DESIGNER:</small> V.K.				<small>CHECKER:</small> V.K.				<small>APPROVER:</small> J.T.			
<small>SCALE:</small> N.T.S.				<small>DATE:</small> JAN 2025				<small>DESIGNER:</small> V.K.				<small>CHECKER:</small> V.K.				<small>APPROVER:</small> J.T.			
<small>SCALE:</small> N.T.S.				<small>DATE:</small> JAN 2025				<small>DESIGNER:</small> V.K.				<small>CHECKER:</small> V.K.				<small>APPROVER:</small> J.T.			
<small>SCALE:</small> N.T.S.				<small>DATE:</small> JAN 2025				<small>DESIGNER:</small> V.K.				<small>CHECKER:</small> V.K.				<small>APPROVER:</small> J.T.			
<small>SCALE:</small> N.T.S.				<small>DATE:</small> JAN 2025				<small>DESIGNER:</small> V.K.				<small>CHECKER:</small> V.K.				<small>APPROVER:</small> J.T.			
<small>SCALE:</small> N.T.S.				<small>DATE:</small> JAN 2025				<small>DESIGNER:</small> V.K.				<small>CHECKER:</small> V.K.				<small>APPROVER:</small> J.T.			
<small>SCALE:</small> N.T.S.				<small>DATE:</small> JAN 2025				<small>DESIGNER:</small> V.K.				<small>CHECKER:</small> V.K.				<small>APPROVER:</small> J.T.			
<small>SCALE:</small> N.T.S.				<small>DATE:</small> JAN 2025				<small>DESIGNER:</small> V.K.				<small>CHECKER:</small> V.K.				<small>APPROVER:</small> J.T.			
<small>SCALE:</small> N.T.S.				<small>DATE:</small> JAN 2025				<small>DESIGNER:</small> V.K.				<small>CHECKER:</small> V.K.				<small>APPROVER:</small> J.T.			
<small>SCALE:</small> N.T.S.				<small>DATE:</small> JAN 2025				<small>DESIGNER:</small> V.K.				<small>CHECKER:</small> V.K.				<small>APPROVER:</small> J.T.			
<small>SCALE:</small> N.T.S.				<small>DATE:</small> JAN 2025				<small>DESIGNER:</small> V.K.				<small>CHECKER:</small> V.K.				<small>APPROVER:</small> J.T.			
<small>SCALE:</small> N.T.S.				<small>DATE:</small> JAN 2025				<small>DESIGNER:</small> V.K.				<small>CHECKER:</small> V.K.				<small>APPROVER:</small> J.T.			
<small>SCALE:</small> N.T.S.				<small>DATE:</small> JAN 2025				<small>DESIGNER:</small> V.K.				<small>CHECKER:</small> V.K.				<small>APPROVER:</small> J.T.			
<small>SCALE:</small> N.T.S.				<small>DATE:</small> JAN 2025				<small>DESIGNER:</small> V.K.				<small>CHECKER:</small> V.K.				<small>APPROVER:</small> J.T.			
<small>SCALE:</small> N.T.S.				<small>DATE:</small> JAN 2025				<small>DESIGNER:</small> V.K.				<small>CHECKER:</small> V.K.				<small>APPROVER:</small> J.T.			
<small>SCALE:</small> N.T.S.				<small>DATE:</small> JAN 2025				<small>DESIGNER:</small> V.K.				<small>CHECKER:</small> V.K.				<small>APPROVER:</small> J.T.			
<small>SCALE:</small> N.T.S.				<small>DATE:</small> JAN 2025				<small>DESIGNER:</small> V.K.				<small>CHECKER:</small> V.K.				<small>APPROVER:</small> J.T.			
<small>SCALE:</small> N.T.S.				<small>DATE:</small> JAN 2025				<small>DESIGNER:</small> V.K.				<small>CHECKER:</small> V.K.				<small>APPROVER:</small> J.T.			
<small>SCALE:</small> N.T.S.				<small>DATE:</small> JAN 2025				<small>DESIGNER:</small> V.K.				<small>CHECKER:</small> V.K.				<small>APPROVER:</small> J.T.			
<small>SCALE:</small> N.T.S.				<small>DATE:</small> JAN 2025				<small>DESIGNER:</small> V.K.				<small>CHECKER:</small> V.K.				<small>APPROVER:</small> J.T.			
<small>SCALE:</small> N.T.S.				<small>DATE:</small> JAN 2025				<small>DESIGNER:</small> V.K.				<small>CHECKER:</small> V.K.				<small>APPROVER:</small> J.T.			
<small>SCALE:</small> N.T.S.				<small>DATE:</small> JAN 2025				<small>DESIGNER:</small> V.K.				<small>CHECKER:</small> V.K.				<small>APPROVER:</small> J.T.			
<small>SCALE:</small> N.T.S.				<small>DATE:</small> JAN 2025				<small>DESIGNER:</small> V.K.				<small>CHECKER:</small> V.K.				<small>APPROVER:</small> J.T.			
<small>SCALE:</small> N.T.S.				<small>DATE:</small> JAN 2025				<small>DESIGNER:</small> V.K.				<small>CHECKER:</small> V.K.				<small>APPROVER:</small> J.T.			
<small>SCALE:</small> N.T.S.				<small>DATE:</small> JAN 2025				<small>DESIGNER:</small> V.K.				<small>CHECKER:</small> V.K.				<small>APPROVER:</small> J.T.			
<small>SCALE:</small> N.T.S.				<small>DATE:</small> JAN 2025				<small>DESIGNER:</small> V.K.											

GENERAL NOTES

GENERAL NOTES

- DRAWINGS ARE TO BE READ IN CONJUNCTION WITH ALL OTHER PROJECT DRAWINGS.
- ALL CONSTRUCTION WORKS TO BE CARRIED OUT IN ACCORDANCE WITH CIVIL SPECIFICATION, APPROVED PLANS AND TO THE SATISFACTION OF THE SUPERINTENDENT.
- ALL WORKS IN THE PUBLIC ROAD RESERVE ARE TO BE CARRIED OUT TO THE SATISFACTION OF AND IN ACCORDANCE WITH THE SPECIFICATION AND STANDARDS OF MERRI BECK CITY COUNCIL.
- SURVEY BACKGROUND INFORMATION SUPPLIED BY NEEDS CONSULTING, REF NO. 22406RFL, DATED 21/10/2025. REFER TO PLAN DRAWINGS FOR FURTHER INFORMATION.
- EXISTING CONTOURS SHOWN REFLECT SITE CONDITIONS AT TIME OF SURVEY.
- THE CONTRACTOR IS TO REVIEW THE GEOTECHNICAL REPORT AND CIVIL SPECIFICATION FOR SUBGRADE PREPARATION, SOIL PARAMETERS AND CONSTRUCTION METHODOLOGY TO SUIT THE CONDITIONS ON SITE.
- ALL DIMENSIONS SHOWN ARE IN MILLIMETRES UNLESS NOTED OTHERWISE.
- LEVELS ARE TO AUSTRALIAN HEIGHT DATUM (m AHD).
- ALL DIMENSIONS RELEVANT TO SETTING OUT SHALL BE CONFIRMED AND VERIFIED BY THE CONTRACTOR BEFORE CONSTRUCTION IS COMMENCED. THE CONTRACTOR SHALL REPORT ANY IDENTIFIED DISCREPANCIES TO THE SUPERINTENDENT FOR CLARIFICATION.
- THE CONTRACTOR MUST ARRANGE THE REQUISITE INSPECTIONS OF THE WORKS WITH THE SUPERINTENDENT OR THEIR REPRESENTATIVE AS PER THE SPECIFICATIONS.
- ALL RELEVANT ASSETS AND THEIR ASSOCIATED INFRASTRUCTURE (I.E PIPE WORK/MANHOLE ETC) ARE TO BE REMOVED AND DISPOSED OF OFF SITE AT THE CONTRACTORS EXPENSE.
- ALL TRENCHING WORKS TO BE IN ACCORDANCE WITH THE RELEVANT ACT AND REGULATIONS.
- CONTRACTOR IS TO ALLOW FOR BACK FILLING ASSOCIATED TRENCHES IN ACCORDANCE WITH THE CIVIL SPECIFICATION/ RELEVANT DRAWINGS.
- ALL EXISTING ASSETS AFFECTED BY THE WORKS, E.G. SIGNS, VEHICLE CROSSINGS, FOOTPATHS, KERB AND LINE MARKING, SHALL BE REINSTATED BY THE CONTRACTOR PRIOR TO THE COMPLETION OF THE WORKS TO THE SATISFACTION OF THE SUPERINTENDENT OR THEIR REPRESENTATIVE.
- AT THE COMPLETION OF ALL WORKS, ALL RUBBISH, DEBRIS AND SURPLUS SPOIL SHALL BE REMOVED AND THE SITE SHALL BE CLEARED TO THE SATISFACTION OF THE SUPERINTENDENT OR THEIR REPRESENTATIVE.
- IT IS THE CONTRACTORS RESPONSIBILITY TO SUBMIT THE AS-BUILT DRAWINGS (INCLUDING DIGITAL FORMAT) TO THE SUPERINTENDENT AND DESIGN ENGINEER AT THE COMPLETION OF THE CONSTRUCTION WORKS. ANY UNAPPROVED DISCREPANCIES MUST BE RECTIFIED AT THE CONTRACTORS EXPENSE TO THE SATISFACTION OF THE SUPERINTENDENT AND /OR ENGINEER.

TREE PROTECTION

- ALL TREES AND SHRUBS ARE TO BE RETAINED UNLESS OTHERWISE SHOWN ON THE DRAWINGS TO BE REMOVED OR DIRECTED BY THE SUPERINTENDENT OR THEIR REPRESENTATIVE. UNDER NO CIRCUMSTANCES SHALL WORKS BE CARRIED OUT MATERIALS STORED OR CONSTRUCTION VEHICLES BE PARKED WITHIN THE CANOPY OF EXISTING TREES WITHOUT THE APPROVAL OF THE SUPERINTENDENT.
- THE CONTRACTOR SHALL BRING TO THE ATTENTION OF THE SUPERINTENDENT ANY TREES THAT ARE IN CONFLICT WITH THE PROPOSED WORKS AND SEEK DIRECTION ON HOW TO PROCEED.

EXISTING SERVICES

- BCE DESIGN PTY LTD. ACCEPTS NO RESPONSIBILITIES IN RELATION TO EXTENT AND LOCATION OF EXISTING SERVICES IN THE VICINITY OF THE SITE. CONTRACTORS MUST ASCERTAIN THE PRECISE LOCATION AND DEPTH OF ALL EXISTING SERVICES WHICH COULD BE AFFECTED BY THE WORKS. WHERE EXISTING SERVICES ARE FOUND TO BE IN CLASH OF THE WORKS, THE CONTRACTOR SHOULD NOTIFY THE SUPERINTENDENT ACCORDINGLY.
- THE CONTRACTOR SHALL LIAISE WITH ALL RELEVANT SERVICE AUTHORITIES WITH RESPECT TO ANY SERVICE ALTERATIONS OR FOR WORKS IN VICINITY OR CLOSE PROXIMITY TO EXISTING SERVICES. THE CONTRACTOR SHALL BE REQUIRED TO SEEK CLEARANCE, PROGRAM AND COORDINATE THESE WORKS WITH THE RELEVANT SERVICE AUTHORITY AND THEIR CONTRACTORS AT THEIR OWN EXPENSE.
- ANY INFRASTRUCTURE DAMAGE DURING THE DEFECTS LIABILITY PERIOD IS THE RESPONSIBILITY OF THE CONTRACTOR AND IS TO BE REINSTATED TO THE SATISFACTION OF THE SUPERINTENDENT OR THEIR REPRESENTATIVE.
- ALL SERVICE CONDUITS TRENCHES UNDER ROAD PAVEMENTS ARE TO BE BACKFILLED WITH 20mm 3% CEMENT TREATED CLASS 3 CRUSHED ROCK COMPACTED TO A DENSITY NOT LESS THAN 98% OF THE MAXIMUM DRY DENSITY VALUE DETERMINED BY THE MODIFIED COMPACTION TEST IN ACCORDANCE WITH A.S.1289.5.2-14093.

OCCUPATIONAL HEALTH AND SAFETY

- PRIOR TO COMMENCEMENT OF WORKS ON SITE, THE CONTRACTOR MUST ENSURE THAT ALL MATTERS RELATING TO THE OCCUPATIONAL HEALTH AND SAFETY ACT 2004, HAVE BEEN AND WILL BE COMPLIED WITH.
- CONTRACTOR TO INTRODUCE MANUAL HANDLING PROCEDURES PRIOR TO CONSTRUCTION AND MAINTENANCE WORKS.
- CONTRACTOR TO INTRODUCE SAFE MAINTENANCE PROCEDURES PRIOR TO UNDERTAKING MAINTENANCE WORKS ON THESE ASSETS.

SEDIMENT CONTROL

- ON COMMENCEMENT OF CONSTRUCTION WORKS, THE CONTRACTOR MUST COMPLY WITH THE RECOMMENDATIONS OF THE ENVIRONMENT PROTECTION AUTHORITY PUBLICATION "CONSTRUCTION TECHNIQUES FOR SEDIMENT POLLUTION CONTROL". APPROPRIATE SILTATION CONTROL IS TO BE MAINTAINED THROUGHOUT THE CONSTRUCTION AND MAINTENANCE PERIOD OF THE WORKS.

SITE CLEARING

- TOP SOIL TO BE STRIPPED ACROSS THE DEVELOPMENT SITE AS REQUIRED.
- STRIPPED TOPSOIL SHALL BE STOCKPILED ON SITE FOR FUTURE LANDSCAPING USE. THE LOCATION OF TOPSOIL STOCKPILE SHALL BE AS APPROVED OR DIRECTED BY THE SUPERINTENDENT, SUBJECT TO THE SUPERINTENDENTS APPROVAL. TOPSOIL IN EXCESS TO SITE REQUIREMENTS SHALL BE DISPOSED OFF SITE.

EARTHWORKS

- A SUITABLY QUALIFIED GEOTECHNICAL ENGINEER SHALL BE ENGAGED AT CONTRACTORS EXPENSE TO WITNESS AND APPROVE THE SUBGRADE PREPARATION WORKS AND FINAL PROOF ROLLING AS ADEQUATE FOR CONSTRUCTION.
- DESIGN LEVELS PROVIDED IN THE DRAWINGS ARE FINISHED SURFACE LEVELS. EARTHWORKS SHOULD THEREFORE BE FINISHED AT THE APPROPRIATE LEVELS TO ALLOW FOR THE CONSTRUCTION OF PAVEMENTS AND SHOULD BE DOCUMENTED.
- EARTHWORK SPOIL IN EXCESS OF SITE FILL REQUIREMENTS SHALL BE DISPOSED OFF SITE.
- PRIOR TO EARTH FILLING WORKS THE EXPOSED EMBANKMENT FOUNDATION SHALL BE MOISTURE CONDITIONED AND COMPACTED TO A MINIMUM OF 98% STANDARD COMPACTION PRIOR TO FILLING OR PAVEMENT CONSTRUCTION.
- ANY SOFT, WET OR UNSUITABLE SUBGRADE MATERIALS, AS DEFINED IN THE SPECIFICATION, SHALL BE REMOVED AND REPLACED WITH AN APPROVED MATERIAL.
- EXCAVATED MATERIAL THAT COMPLIES WITH THE SPECIFICATION REQUIREMENTS FOR FILL MAY BE USED AS BACKFILL.
- ALL COMPACTION TO BE CARRIED OUT IN ACCORDANCE WITH COMPACTION TEST PROCEDURES DEFINED IN AS 1289. CERTIFICATION IS TO BE BY AN INDEPENDENT GEOTECHNICAL ENGINEER (AT CONTRACTORS EXPENSE).
- ALL EXCAVATED AND FILLED BATTER AREAS SHALL BE SURFACED WITH A 150mm LAYER OF APPROVED TOPSOIL OR AS SHOWN OTHERWISE ON THE DRAWINGS.

PAVEMENTS

- WHERE NEW ASPHALT, CONCRETE KERB & CHANNEL, PATHS AND DRIVEWAYS MATCH INTO EXISTING, THE EXISTING SURFACE IS TO BE SAW CUT AND MATCHED NEATLY.
- ANY PAVEMENT SOFT SPOTS (IDENTIFIED SHALL BE EXCAVATED TO A PROOF ROLLED BASE AND BACKFILLED WITH APPROVED MATERIAL COMPACTED IN 150mm LAYERS (UNLESS OTHERWISE INSTRUCTED BY THE GEOTECHNICAL ENGINEER) TO ACHIEVE THE REQUIRED DRY DENSITY VALUE.
- CRUSHED CONCRETE COMPLYING WITH VICROADS SECTION 820 MAY BE USED IN LIEU OF VIRGIN CRUSHED ROCK SUBJECT TO APPROVAL BY THE SUPERINTENDENT.
- EXISTING PAVEMENT AREAS THAT REMAIN, WHERE CRACKING IS EVIDENT SHALL BE REPAIRED WITH A PROPRIETARY PRODUCT TO THE MANUFACTURERS SPECIFICATIONS.

KERBING AND THE ANCILLARY WORKS

- SEE OUT DIMENSIONS GIVEN TO KERBING ARE TO BE THE INVERT OF KERB AS DEFINED ON THE STANDARD DRAWINGS.
- PEDESTRIAN CROSSINGS TO CONFORM TO AS 1428.1 AND RELEVANT AUTHORITIES STANDARD DETAILS WHERE APPLICABLE.
- WHERE REQUIRED ALL NEW KERBS ARE TO EXISTING KERBS, LEVEL AND NEATLY, ENSURING MINIMUM 1 IN 250 GRADE, SAW CUTTING AND REINSTATING PAVEMENT IN FRONT OF KERB TO FALL TO NEW KERB LEVEL.

STORMWATER DRAINAGE

- ALL STORMWATER DRAINS - 150MM ARE TO BE CLASS 2 R.C. FRC, HDPE OR POLYPROPYLENE PIPES COMPLYING WITH REQUIREMENTS OF AS3500 UNLESS NOTED OTHERWISE. ALL PIPES ARE TO BE RUBBER RING JOINTED. ALTERNATIVE PIPE MATERIALS MAY BE USED SUBJECT TO APPROVAL BY THE SUPERINTENDENT.
- ALL STORMWATER DRAINAGE PIPES LESS THAN 225MM TO BE SLOVED QUALITY UPVC WITH SOLVENT WELDED JOINTS. UNLESS NOTED OTHERWISE.
- DRAINAGE TRENCHING WORKS TO BE IN ACCORDANCE WITH THE RELEVANT ACT AND REGULATIONS.
- FIT COVER LEVELS (CLS) TO EXISTING OR PROPOSED FINISHED LEVELS AS APPROPRIATE. ACCORDINGLY THE CONTRACTOR IS TO VERIFY DOCUMENTED CLS PRIOR TO DRAINAGE INSTALLATION AND NOTIFY THE SUPERINTENDENT OF ANY ANOMALIES WITH CLS AND FINISHED LEVELS FOR CLARIFICATION.
- ALL DOWNPIPE CONNECTIONS TO BE MINIMUM 1000 OR EQUAL TO DOWNPIPE DIAMETER, UNLESS OTHERWISE NOTED. ALL PIPES TO BE SEWER QUALITY UPVC, WITH SOLVENT WELDED JOINTS. DOWNPIPE CONNECTIONS SHALL TYPICALLY BE PLACED AT MIN GRADE OF 1:100.
- EXISTING STORM WATER PIPE TO BE ABANDONED IS TO BE CUT AND SEALED WITH CONCRETE AT BOTH ENDS.
- FIT SETOUT COORDINATES ARE TO THE CENTRE OF THE FIT.
- ALL TABLE DRAINS AND VERGES ARE TO BE REINSTATED UPON COMPLETION OF WORKS TO THE SATISFACTION OF THE SUPERINTENDENT OR THEIR REPRESENTATIVE.
- DURING CONSTRUCTION THE CONTRACTOR SHALL BE RESPONSIBLE FOR CONSTRUCTING AND MAINTAINING A TEMPORARY SITE DRAINAGE SYSTEM AND TO MAINTAIN THE SITE IN A DRY AND STABLE CONDITION. DETAILS OF THE DRAINAGE SYSTEM SHALL BE SUBMITTED FOR THE APPROVAL OF THE SUPERINTENDENT.

SUBSOIL DRAINAGE

- PAVEMENT SUBSOIL DRAINS ARE TO BE PLACED IN ACCORDANCE WITH STANDARD DRAWINGS BEHIND ALL KERB AND CHANNEL, ON THE LOW SIDE OF ALL PAVEMENTS, AND ROAD CROSSINGS AT SAG VERTICAL CURVES.
- SUBSOIL DRAINAGE SHALL OUTLET TO DRAINAGE PITS OR LAND DRAINS.

LINE MARKING AND SIGNAGE

- ALL REDUNDANT LINE MARKING SHALL BE PERMANENTLY REMOVED BY APPLICATION OF A SPRAY SEAL OR GRINDING OFF.
- ALL LINE MARKING TO BE IN ACCORDANCE WITH AS1742.
- ALL TRAFFIC CONTROL MEASURES, PROPOSED SIGNS AND LINE MARKING SHALL BE IN ACCORDANCE WITH AS1742 PARTS 1, 2 & 3.
- ALL SIGNS TO BE CLASS 1 HIGH INTENSITY TYPE AND TO COMPLY WITH THE REQUIREMENTS OF A.S.1743-2001.
- ALL LINE MARKING TO BE SOLVENT BASED PAINT OF LONG LIFE QUALITY IN ACCORDANCE WITH VIC ROADS REQUIREMENTS AND AUSTRALIAN STANDARDS.
- ROAD PAVEMENT MARKINGS TO BE MARKED OUT WITH 100mm WIDE WHITE LINES UNLESS DENOTED OTHERWISE.
- CAR PARKING BAYS MARKINGS ARE TO BE 60mm WIDE WHITE LINES UNLESS DENOTED OTHERWISE.

TRENCHING

- PIPE BEDDING AND BACKFILLING OF ALL STORMWATER TRENCHES SHALL BE TO A LEVEL OF 450mm ABOVE THE TOPS OF PIPES AND SHALL BE IMPORTED CLASS 3 FINE CRUSHED ROCK, WITH A NOMINAL SIZE 20mm, PLACED IN NOT EXCEEDING 120MM LAYERS. ALL LAYERS SHALL BE COMPACTED PRIOR TO INSTALLING SUBSEQUENT LAYERS.
- PRIOR TO THE COMMENCEMENT OF FILLING THE SITE SHALL BE STRIPPED AS NOTED. FILLING IS TO BE CARRIED OUT IN STRICT ACCORDANCE WITH THE SPECIFICATIONS AND AS3798. APPROVED MATERIAL WON FROM SITE OR APPROVED COMPACTED FILL SHALL BE MOISTURE CONDITIONED IN ACCORDANCE WITH THE RECOMMENDATIONS OF THE GEOTECHNICAL REPORT PRIOR TO BEING PLACED IN UNIFORM HORIZONTAL LAYERS OF 200mm MAXIMUM DEPTH, AND COMPACTED AS SPECIFIED. ALL FINISHED SURFACES SHALL ACHIEVE A MINIMUM COMPACTION OF 98% STANDARD DRY DENSITY. COMPACTION TESTING OF ALL FILL SHALL BE CARRIED OUT IN ACCORDANCE WITH THE REQUIREMENTS OF AS 3798.
- BUILDER SHALL ENSURE THAT ALL TRENCHING ADJACENT TO EXISTING OR PROPOSED FOOTINGS DO NO UNDERMINE THESE FOOTINGS. REFER TO THE ANGLE OF REPOSE REQUIREMENT IN THE STRUCTURAL ENGINEERING DOCUMENTATION AND THE GEOTECHNICAL ENGINEERS REPORT FOR FURTHER INFORMATION.

TRAFFIC MANAGEMENT

- TRAFFIC MANAGEMENT SHALL BE ARRANGED BY THE CONTRACTOR FOR THE DURATION OF THE WORKS IN ACCORDANCE WITH THE SPECIFICATIONS AND TO THE SATISFACTION OF ALL PARTIES, INCLUDING THE PROVISION OF ALL NECESSARY SIGNAGE, LIGHTING AND BARRICADING, TRAFFIC FLOWS IN ALL ADJUTING ROADWAYS AND ACCESS TO THE SITE SHALL REMAIN UNIMPEDED FOR THE DURATION OF THE CONTRACT. A TRAFFIC MANAGEMENT PLAN FOR ANY EXTERNAL ROAD WORKS SHALL BE SUBMITTED TO THE RELEVANT MUNICIPAL AUTHORITY FOR APPROVAL A MINIMUM OF TWO WEEKS PRIOR TO COMMENCEMENT OF WORKS.
- A TRAFFIC MANAGEMENT PLAN WHERE REQUIRED BY THE LOCAL AUTHORITY SHALL BE PROVIDED BY THE BUILDER TO ENSURE ALL WORKS ARE CONDUCTED IN A SAFE MANNER. THE BUILDER SHALL BE RESPONSIBLE FOR THE PROCUREMENT AND EXECUTION OF THE TRAFFIC MANAGEMENT PLAN.

SITE WORKS AND MAINTENANCE

- ADEQUATE DRAINAGE SHALL BE PROVIDED TO PREVENT WATER PONDING OR COLLECTING ADJACENT TO THE WORKS.
- TRENCHES UNDER OR ADJACENT TO THE WORKS SHALL BE BACKFILLED WITH COMPACTED CLAY OR CONCRETE.
- ROOF GUTTERS, DOWN PIPES, STORM WATER AND SEWERAGE DRAINAGE SHALL BE MAINTAINED TO PREVENT OVERFLOWS. ANY LEAKS SHALL BE PROMPTLY REPAIRED.
- THE PLANTING OF TREES AND LARGE SHRUBS AND GENERAL SITE MAINTENANCE SHALL COMPLY WITH THE REQUIREMENTS OF AS2670 AND CSIRO BUILDINGS TECHNOLOGY BT7. IS. THE BUILDER SHALL NOTIFY THE OWNER OF THESE REQUIREMENTS.

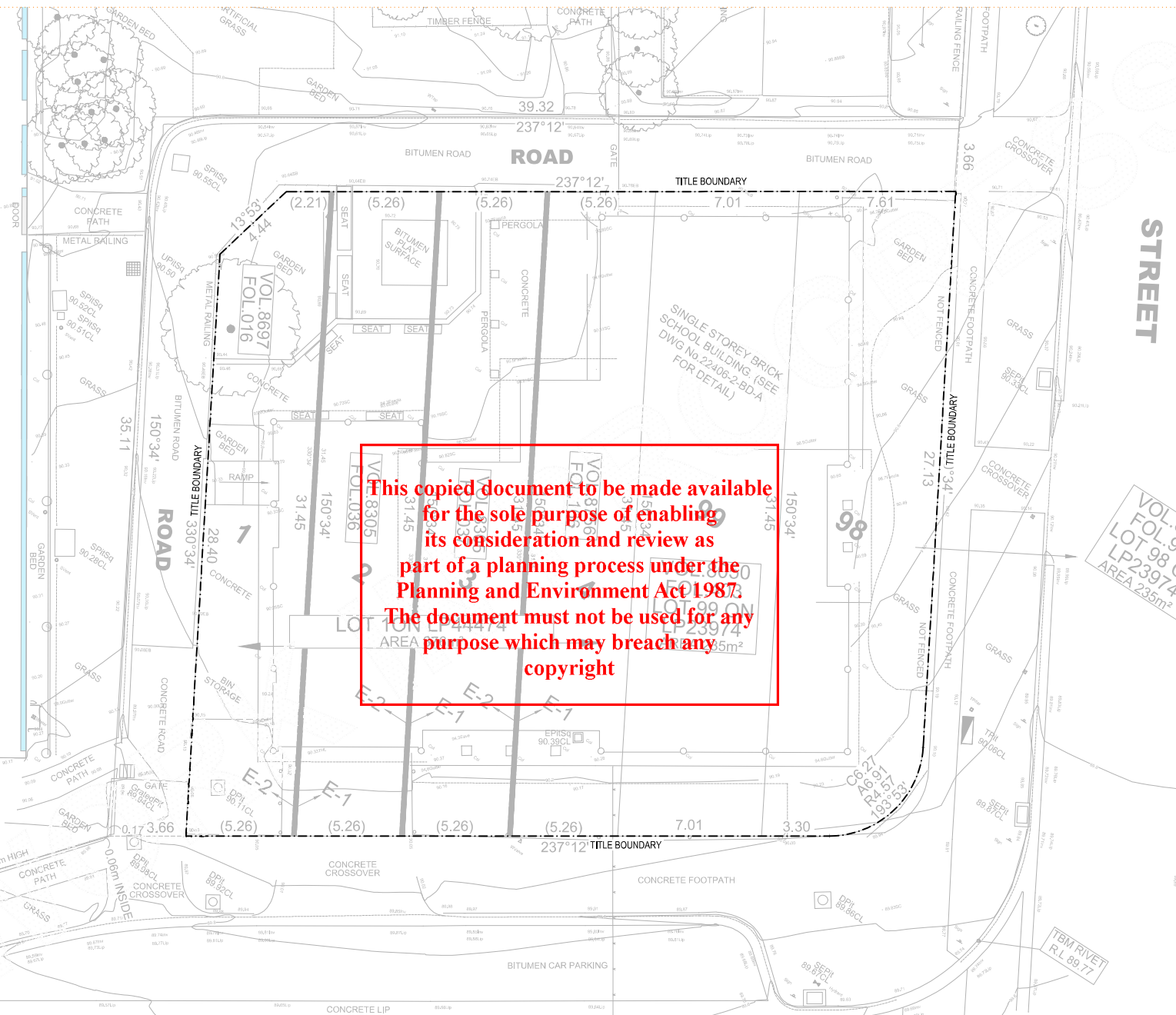
**ADVERTISED
PLAN**

This copied document to be made available for the sole purpose of enabling its consideration and review as part of a planning process under the Planning and Environment Act 1987. The document must not be used for any purpose which may breach any copyright

<p>DATE PLOTTED: 11/02/2026 10:59:35 AM BY: VASJEDS.KOURTESSES</p>	<p>CLIENT: PENOLA CATHOLIC COLLEGE</p>				<p>PROJECT NAME: GLENROY ARTS BUILDING 35 WILLIAM ST, GLENROY VIC 3046</p>				<p>DRAWING TITLE: GENERAL NOTES</p>			
	<p>PROJECT NUMBER: 243703</p>				<p>DRAWING NO: C001</p>				<p>REVISION: P1</p>			
	<p>SCALE: N.T.S.</p>				<p>DATE: JAN 2026</p>				<p>DESIGNED: V.K.</p>			
	<p>REV: DESCRIPTION</p>				<p>BY: DATE</p>				<p>REV: DESCRIPTION</p>			
<p>PI: PRELIMINARY ISSUE</p>				<p>V.K. 11/02/2026</p>				<p>REV: DESCRIPTION</p>				
<p>SCALE: N.T.S.</p>				<p>DATE: JAN 2026</p>				<p>DESIGNED: V.K.</p>				
<p>REV: DESCRIPTION</p>				<p>BY: DATE</p>				<p>REV: DESCRIPTION</p>				
<p>PI: PRELIMINARY ISSUE</p>				<p>V.K. 11/02/2026</p>				<p>REV: DESCRIPTION</p>				
<p>SCALE: N.T.S.</p>				<p>DATE: JAN 2026</p>				<p>DESIGNED: V.K.</p>				
<p>REV: DESCRIPTION</p>				<p>BY: DATE</p>				<p>REV: DESCRIPTION</p>				
<p>PI: PRELIMINARY ISSUE</p>				<p>V.K. 11/02/2026</p>				<p>REV: DESCRIPTION</p>				



0005 FOL.774
 N TP95057W
 1.602 ha



STREET

VOL.8290
 FOL.942
 LOT 98 ON
 LP23974
 AREA 235m²

This copied document to be made available
 for the sole purpose of enabling
 its consideration and review as
 part of a planning process under the
 Planning and Environment Act 1987.
 The document must not be used for any
 purpose which may breach any
 copyright



SERVICE CLASHES
 CONTRACTOR TO REFER TO SERVICES DOCUMENTATION
 AND LIAISE WITH THE RELEVANT AUTHORITY TO MITIGATE
 ANY SERVICE CLASHES WITH THE PROPOSED WORKS.

WARNING
 BEWARE OF UNDERGROUND SERVICES.
 THE LOCATION OF UNDERGROUND SERVICES ARE
 APPROXIMATE ONLY AND THEIR EXACT POSITION SHOULD
 BE PROVEN ON SITE BY CIVIL CONTRACTOR PRIOR TO
 CONSTRUCTION OF ANY CIVIL WORKS. NO GUARANTEE IS
 GIVEN THAT ALL EXISTING SERVICES ARE SHOWN.

PI	PRELIMINARY ISSUE	VK	11/02/2028	REV	DESCRIPTION	BY	DATE
REV	DESCRIPTION	BY	DATE	REV	DESCRIPTION	BY	DATE

**ADVERTISED
 PLAN**

CLIENT:	PENOLA CATHOLIC COLLEGE	PROJECT NAME:	GLENROY ARTS BUILDING 35 WILLIAM ST, GLENROY VIC 3046	DRAWING TITLE:	EXISTING SITE PLAN
				PROJECT NUMBER:	243703
				DRAWING NO.:	C010
				REVISION:	P1



IMPORTANT NOTE:

- THIS DRAWING IS SUBJECT TO THE APPROVAL OF LOCAL AUTHORITY. BUILDING SURVEYOR IS TO ISSUE DOCUMENTS TO LOCAL AUTHORITY FOR APPROVAL PRIOR TO ISSUE OF BUILDING PERMIT.
- ALL FINAL INTERNAL PIPE INVERT LEVELS SHOWN AND ARE TO BE COORDINATED ON SITE AND WITH ALL OTHER CONSULTANT DESIGNS AND DRAWINGS. WHERE CLASHES EXIST OR ADDITIONAL INFORMATION IS REQUIRED, THIS OFFICE IS TO BE CONTACTED FOR FURTHER ASSESSMENT AND RE-DESIGN.

SITE DATA

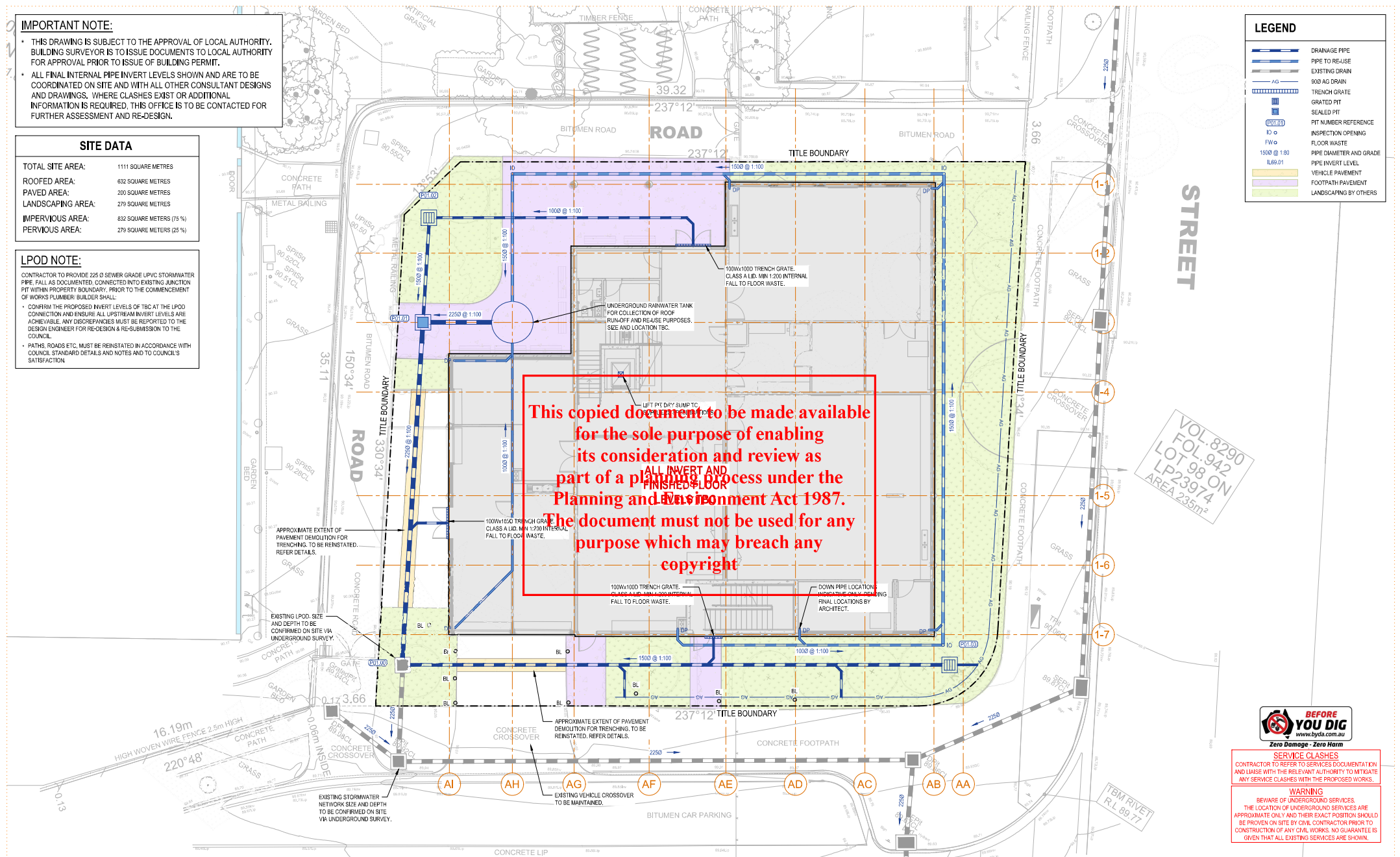
TOTAL SITE AREA:	1111 SQUARE METRES
ROOFED AREA:	632 SQUARE METRES
PAVED AREA:	200 SQUARE METRES
LANDSCAPING AREA:	279 SQUARE METRES
IMPERVIOUS AREA:	632 SQUARE METERS (57%)
PERVIOUS AREA:	279 SQUARE METERS (25%)

LPOD NOTE:

- CONTRACTOR TO PROVIDE 225 Ø SEWER GRADE UPVC STORMWATER PIPE. FALL AS DOCUMENTED, CONNECTED INTO EXISTING JUNCTION PIT WITHIN PROPERTY BOUNDARY. PRIOR TO THE COMMENCEMENT OF WORKS PLUMBER BUILDER SHALL:
 - CONFIRM THE PROPOSED INVERT LEVELS OF TBC AT THE LPOD CONNECTION AND ENSURE ALL UPSTREAM INVERT LEVELS ARE ACHIEVABLE. ANY DISCREPANCIES MUST BE REPORTED TO THE DESIGN ENGINEER FOR RE-DESIGN & RE-SUBMISSION TO THE COUNCIL.
 - PATHS, ROADS ETC. MUST BE REINSTITATED IN ACCORDANCE WITH COUNCIL STANDARD DETAILS AND NOTES AND TO COUNCIL'S SATISFACTION.

LEGEND

	DRAINAGE PIPE
	PIPE TO RELIEVE
	EXISTING DRAIN
	900 AG DRAIN
	TRENCH GRATE
	GRATED PIT
	SEALED PIT
	PIT NUMBER REFERENCE
	INSPECTION OPENING
	FLOOR WASTE
	PIPE DIAMETER AND GRADE
	PIPE INVERT LEVEL
	VEHICLE PAVEMENT
	FOOTPATH PAVEMENT
	LANDSCAPING BY OTHERS



This copied document to be made available
 for the sole purpose of enabling
 its consideration and review as
 part of a planning process under the
 Planning and Environment Act 1987.
 The document must not be used for any
 purpose which may breach any
 copyright

VOL. 8290
 FOL. 942
 LOT 98 ON
 LP23974
 AREA 235m²



SERVICE CLASHES
 CONTRACTOR TO REFER TO SERVICES DOCUMENTATION AND LAISE WITH THE RELEVANT AUTHORITY TO MITIGATE ANY SERVICE CLASHES WITH THE PROPOSED WORKS.

WARNING
 BEWARE OF UNDERGROUND SERVICES.
 THE LOCATION OF UNDERGROUND SERVICES ARE APPROXIMATE ONLY AND THEIR EXACT POSITION SHOULD BE PROVEN ON SITE BY CIVIL CONTRACTOR PRIOR TO CONSTRUCTION OF ANY CIVIL WORKS. NO GUARANTEE IS GIVEN THAT ALL EXISTING SERVICES ARE SHOWN.

REV	DESCRIPTION	BY	DATE	REV	DESCRIPTION	BY	DATE
P2	PRELIMINARY ISSUE	VK	11/02/2026				
P1	PRELIMINARY ISSUE	VK	19/01/2026				

**ADVERTISED
PLAN**

PENOLA CATHOLIC COLLEGE
 CLIENT:

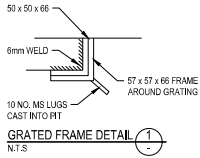
PROJECT NAME:
GLENROY ARTS BUILDING
 35 WILLIAM ST, GLENROY VIC 3046

PRELIMINARY ISSUE
 NOT TO BE USED FOR CONSTRUCTION

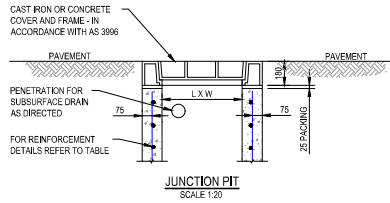
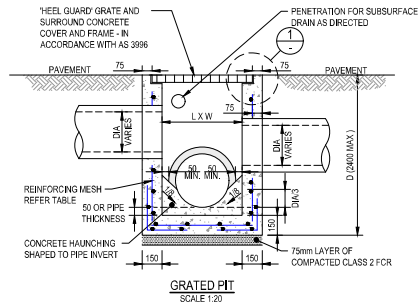
DRAWING TITLE:
CIVIL PLAN

PROJECT NUMBER:	243703	DRAWING NO.:	C020	REVISION:	P2
-----------------	--------	--------------	------	-----------	----

BCE Design Corporation Pty Ltd
 Geelong VIC 3220
 bcedesign.com.au
 info@bcedesign.com.au

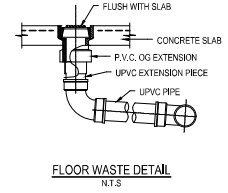
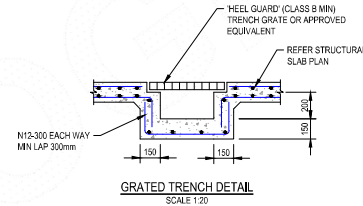
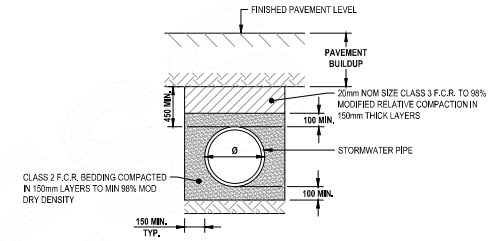
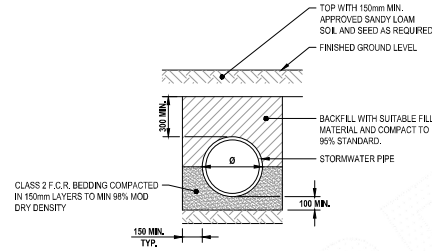
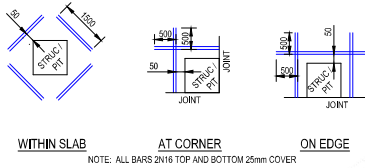


REINFORCEMENT DETAILS	
PIT LENGTH "D"	REINFORCEMENT
UP TO 1200	SL 92
1201 TO 1800	RL 918
1801 TO 2400	RL 1218
> 2400	AS DETAILED



PIT NOTES:

1. PRECAST RC PITS MAY BE USED AS ALTERNATIVE TO CAST INSITU DETAIL PROVIDED, SUBJECT TO ENGINEER APPROVAL OF SHOP DRAWINGS BY MANUFACTURER.
2. PIT REINFORCEMENT DETAILS ARE SHOWN IN TABLE. FABRIC IN SHAFT SHALL HAVE THE MAIN BARS POSITIONED HORIZONTALLY. LAPS TO BE 300mm MIN. CLEAR COVER TO BE 50mm MIN. CORNER RETURN REINFORCEMENT MAY BE FABRIC OR EQUIVALENT BARS.
3. CONCRETE SHALL BE NORMAL CLASS N32 STANDARD STRENGTH GRADE OR HIGHER COMPLYING WITH AS 1379. EXPOSURE CLASSIFICATION UP TO AND INCLUDING B1.
4. DRAINAGE PITS TO BE CONSTRUCTED IN CONCRETE WITH 150mm THICK BASE AND WALLS. PIT DIMENSIONS ARE INTERNAL.
5. CONCRETE INFILL FOR CAST IRON COVERS SHALL BE N32 WITH MAX AGGREGATE SIZE.
6. CONCRETE STRENGTH FC = 32 MPa (MIN) 28 DAYS.
7. FOR PIPES GREATER THAN 4500 HAUNCHING MAY BE REQUIRED. REFER ENGINEER FOR DETAILS.
8. ALL PITS DEEPER THAN 1000mm ARE TO BE PROVIDED WITH STEP IRONS:
 - STEP IRONS ARE TO BE 22mm Ø MILD STEEL BARS GALVANISED OR TREATED WITH APPROVED ZINC OR SILICATE PROCESS.
 - STEP IRONS TO BE SPACED AT 300mm CENTRES WITH LOWEST STEP IRON NOT MORE THAN 300mm ABOVE PIT FLOOR.
 - STEP IRONS TO BE PLACED IN WALL WHICH IS FREE OF OPENING



This copied document to be made available for the sole purpose of enabling its consideration and review as part of a planning process under the Planning and Environment Act 1987. The document must not be used for any purpose which may breach any copyright

ADVERTISED PLAN

REV	DESCRIPTION	BY	DATE	REV	DESCRIPTION	BY	DATE
P1	PRELIMINARY ISSUE	V.K	11/02/2025				

CLIENT:
PENOLA CATHOLIC COLLEGE

PROJECT NAME:
**GLENROY ARTS BUILDING
35 WILLIAM ST, GLENROY VIC 3046**

PRELIMINARY ISSUE
NOT TO BE USED FOR CONSTRUCTION

DRAWING TITLE:
TYPICAL DETAILS - SHEET 1

PROJECT NUMBER:
243703

DRAWING No:
C050

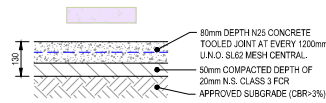
REVISION:
P1

BCE Design Corporation Pty Ltd
Copyright © 2025
bce@bcegroup.com.au
info@bcegroup.com.au

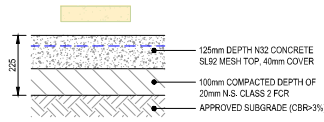
SCALE INDICATED FOR REFERENCE ONLY. DO NOT SCALE DRAWINGS.

PAVEMENT NOTES:

- DESIGN OF LIGHT AND MEDIUM DUTY PAVEMENTS (DESIGN TRAFFIC IN RANGE OF 10³ TO 10⁶ ESAS) SHALL BE DESIGNED IN ACCORDANCE WITH AUSTRROADS TECHNICAL REPORT TP1388-PAVEMENT DESIGN FOR LIGHT TRAFFIC.
- HEAVY DUTY PAVEMENTS WITH DESIGN TRAFFIC > 10⁶ ESAS PAVEMENT DESIGNS SHOULD BE CARRIED OUT IN ACCORDANCE WITH AUSTRROADS PUBLICATION PAVEMENT DESIGN: A GUIDE TO THE STRUCTURAL DESIGN OF ROAD PAVEMENTS.



CONCRETE FOOTPATH PAVEMENT
SCALE 1:10

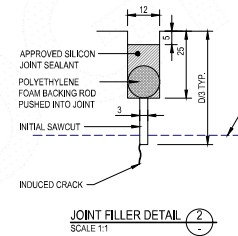


CONCRETE VEHICLE PAVEMENT
SCALE 1:10

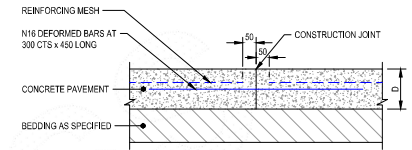
DOWEL DIMENSIONS TABLE		
SLAB THICKNESS (mm)	DOWEL DIAMETER (mm)	DOWEL LENGTH (mm)
90-140	16	400
140-190	20	400
190-240	24	450
240-270	30	450

DOWELING NOTES:

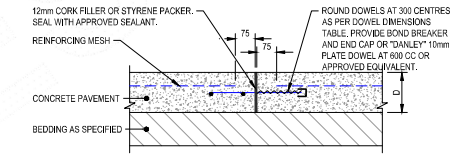
- ALL DOWELS SHALL BE INSTALLED PARALLEL TO ADJACENT DOWELS AND PERPENDICULAR TO THE PRIMARY DIRECTION OF SHRINKAGE AND EXPANSION
- ALL DOWELS SHALL BE FRICTION CUT, NOT CROPPED OR SHEARED.



JOINT FILLER DETAIL (2)
SCALE 1:1

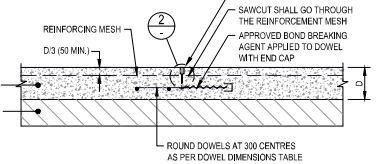


TIED CONSTRUCTION JOINT
SCALE 1:10



DOWELED EXPANSION JOINT REINFORCED CONCRETE
SCALE 1:10

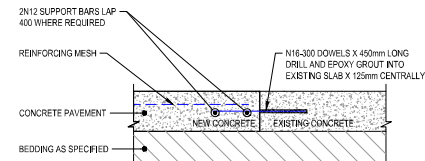
NOTE:
SAWCUT WITHIN 24 HOUR PERIOD (OR AS SOON AS TRAFFICABLE) AFTER CONCRETE HAS BEEN PLACED.



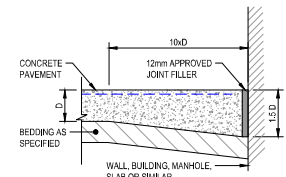
SAWCUT JOINT - DOWELED
N.T.S.

ADVERTISED PLAN

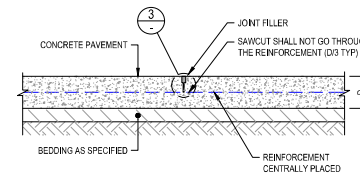
This copied document to be made available for the sole purpose of enabling its consideration and review as part of a planning process under the Planning and Environment Act 1987. The document must not be used for any purpose which may breach any copyright



TIED CONSTRUCTION JOINT MATCHING OF NEW AND EXISTING CONCRETE
N.T.S.

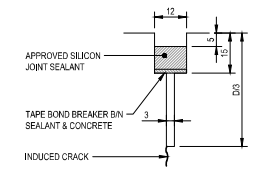


ISOLATION JOINT
N.T.S.



SAWCUT JOINT DETAIL - LIGHT DUTY PAVEMENT (NO DOWEL)
N.T.S.

NOTE:
SAWCUT WITHIN 24 HOUR PERIOD (OR AS SOON AS TRAFFICABLE) AFTER CONCRETE HAS BEEN PLACED.



JOINT FILLER DETAIL (3)
SCALE 1:1

REV	DESCRIPTION	BY	DATE	REV	DESCRIPTION	BY	DATE
PI	PRELIMINARY ISSUE	V.K	11/02/2025				

CLIENT:	PENOLA CATHOLIC COLLEGE
PROJECT NAME:	GLENROY ARTS BUILDING 35 WILLIAM ST, GLENROY VIC 3046
	PRELIMINARY ISSUE NOT TO BE USED FOR CONSTRUCTION
SCALE: N.T.S.	DATE: JAN 2025
DESIGNER: V.K	CHECKED: V.K
DRAWN: J.T	APPROVED: -

PROJECT NUMBER:	243703	DRAWING NO.:	C051	REVISION:	P1
		BCE Design Corporation Pty Ltd Copyright © 2025 bcedesign.com.au info@bcedesign.com.au			