

This copied document to be made available for the sole purpose of enabling its consideration and review as part of a planning process under the Planning and Environment Act 1987. The document must not be used for any purpose which may breach any copyright

Sam Cox Landscape

Year 10 Futures Studio
Woodleigh School

**ADVERTISED
PLAN**

ADVERTISED PLAN

CONTENTS

This copied document to be made available for the sole purpose of enabling its consideration and review as part of a planning process under the Planning and Environment Act 1987. The document must not be used for any purpose which may breach any copyright

Concept Plan
Concept Detail Plan
Concept Roof Plan
Green Roof Mood Board
Stormwater Management Plan
Planting Plan
Understory/Boundary Planting Allocation Detail
Traditional Low Planting Allocation Detail
Plant Schedule



ADVERTISED PLAN

ABSORPTION ZONE (ORCHARD)

ROLLING GRASSLANDS

BENCH SEAT CLASSROOM

ROLLING GRASSLANDS

BRICK PAVING

POWER SERVICES HUB

RESERVE AIRLOCK ENTRANCE

WASTE WATER TREATMENT PLANT

This copied document to be made available for the sole purpose of enabling its consideration and review as part of a planning process under the Planning and Environment Act 1987. The document must not be used for any purpose which may breach any copyright

POTABLE TANK

PATH TOPPINGS TO BRIDGE

FIRE RESERVE TANK + NON POTABLE 100,000



Concept Master Plan
Year 10 Futures Studio
Woodleigh School
Scale: 1:500 @ A3

20/10/2023
Drawn: Kristen Mahler
Version: 4

ACCESS TO ORCHARD
PARK LAND AREA

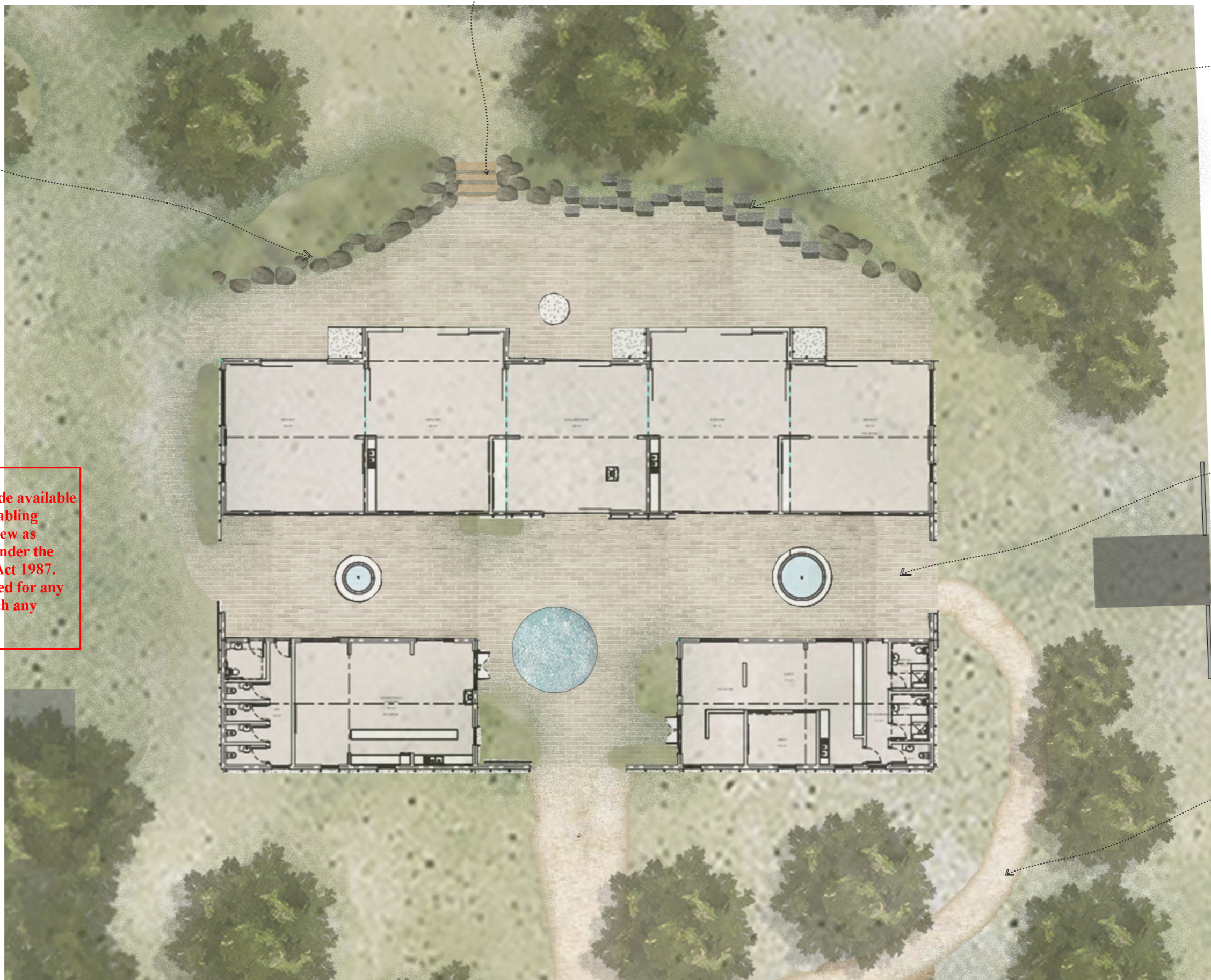
GRANITE BLOCK
SEATING

GRANITE BOULDER
OUTCROP

BRICK PAVING

TOPPINGS

This copied document to be made available
for the sole purpose of enabling
its consideration and review as
part of a planning process under the
Planning and Environment Act 1987.
The document must not be used for any
purpose which may breach any
copyright



Concept Detail Plan

20/10/2023

Year 10 Futures Studio

Drawn: Kristen Mahler

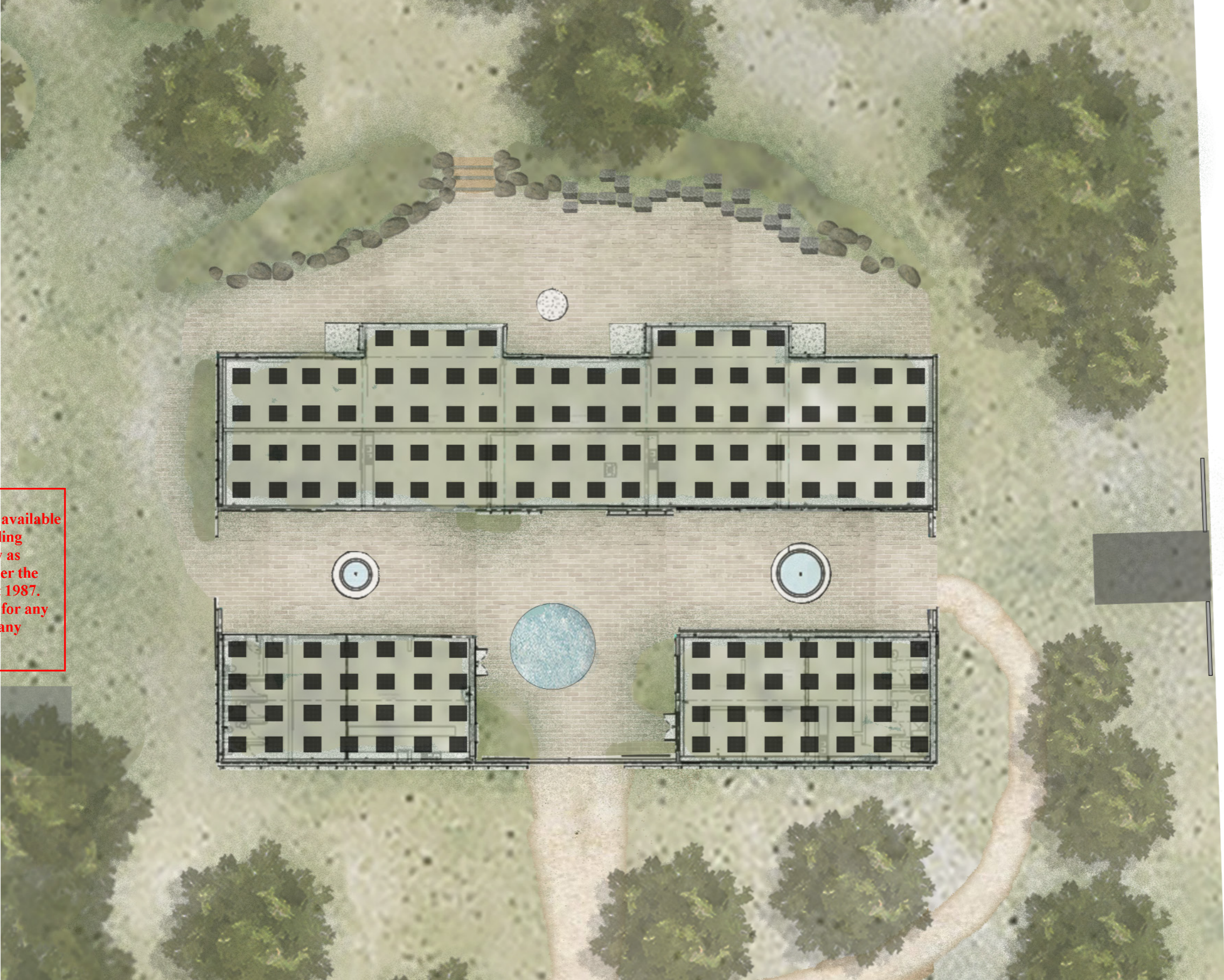
Woodleigh School

Version: 4

Scale: 1:250 @ A3



**ADVERTISED
PLAN**



This copied document to be made available for the sole purpose of enabling its consideration and review as part of a planning process under the Planning and Environment Act 1987. The document must not be used for any purpose which may breach any copyright



ADVERTISED PLAN

Concept Roof Plan

Year 10 Futures Studio

Woodleigh School

Scale: 1:250 @ A3

20/10/2023

Drawn: Kristen Mahler

Version: 4

This copied document to be made available for the sole purpose of enabling its consideration and review as part of a planning process under the Planning and Environment Act 1987. The document must not be used for any purpose which may breach any copyright



GREEN ROOF MOOD BOARD

**ADVERTISED
PLAN**

This copied document to be made available for the sole purpose of enabling its consideration and review as part of a planning process under the Planning and Environment Act 1987. The document must not be used for any purpose which may breach any copyright

ADVERTISED PLAN



450MM GRATED PITS

100MM SLOTTED AGI LINE

SWALES SHAPED INTO THE LANDSCAPE TO DIRECT AND ABSORB SURFACE WATER

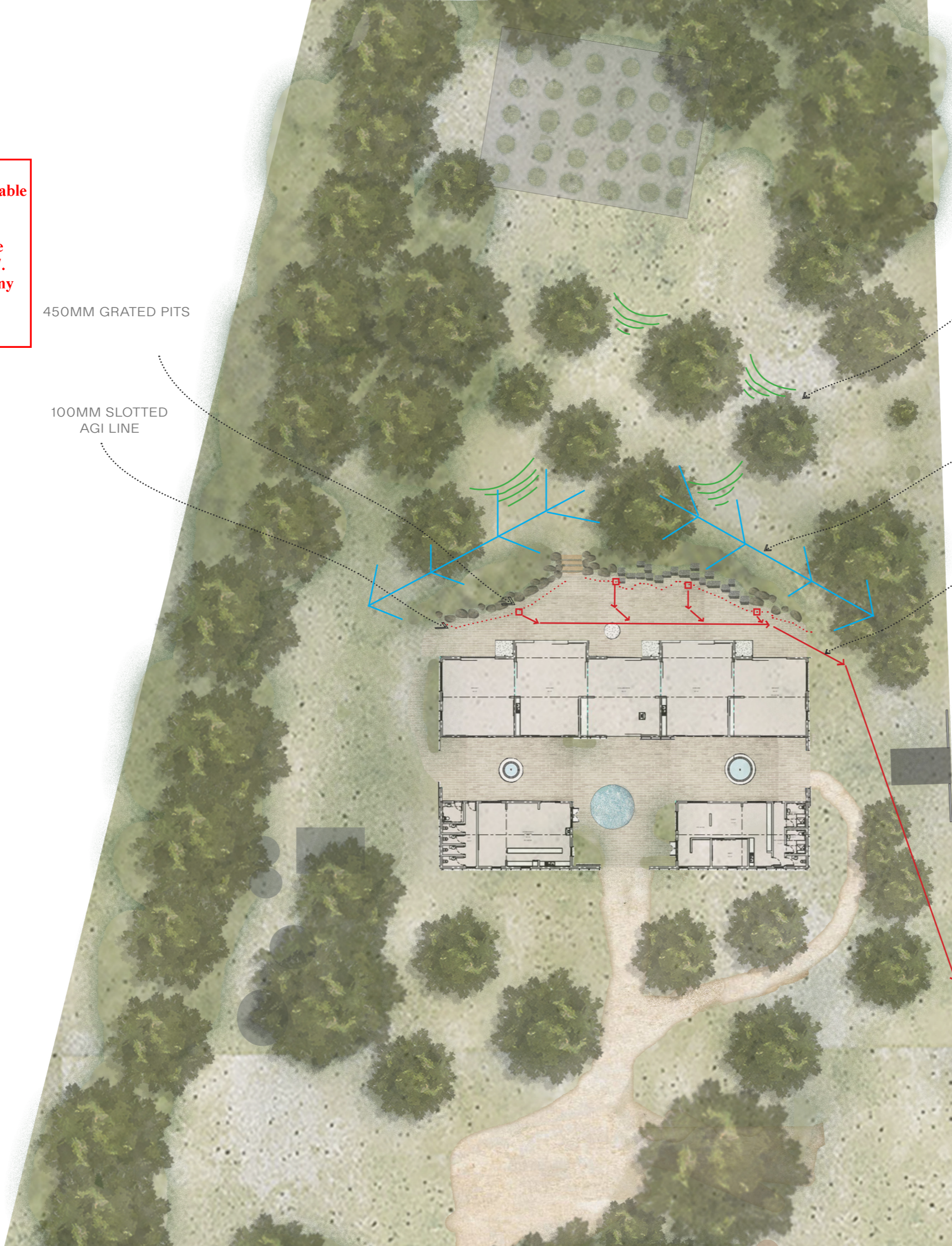
DIVERSIONARY SWALES TO DIRECT SURFACE WATER AROUND THE BUILDING

150MM PVC

STORM WATER RUN TO CREEK ONSITE SOUTH OF RESERVE

Storm Water Management Plan
Year 10 Futures Studio
Woodleigh School
Scale: 1:500 @ A3

20/10/2023
Drawn: Kristen Mahler
Version: 1

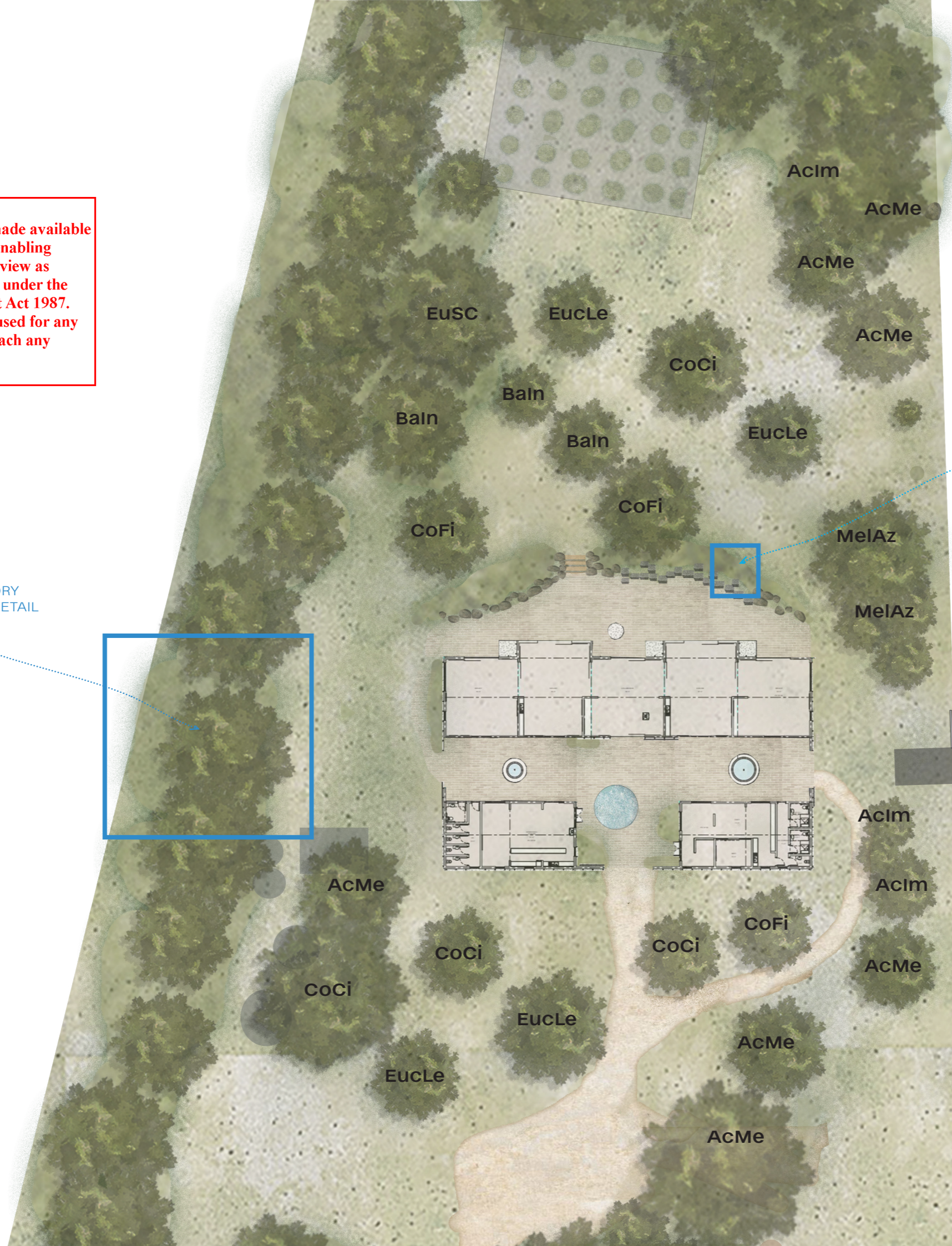


This copied document to be made available for the sole purpose of enabling its consideration and review as part of a planning process under the Planning and Environment Act 1987. The document must not be used for any purpose which may breach any copyright

BOUNDARY/UNDERSTORY PLANTING ALLOCATION DETAIL

TRADITIONAL LOW PLANTING ALLOCATION DETAIL

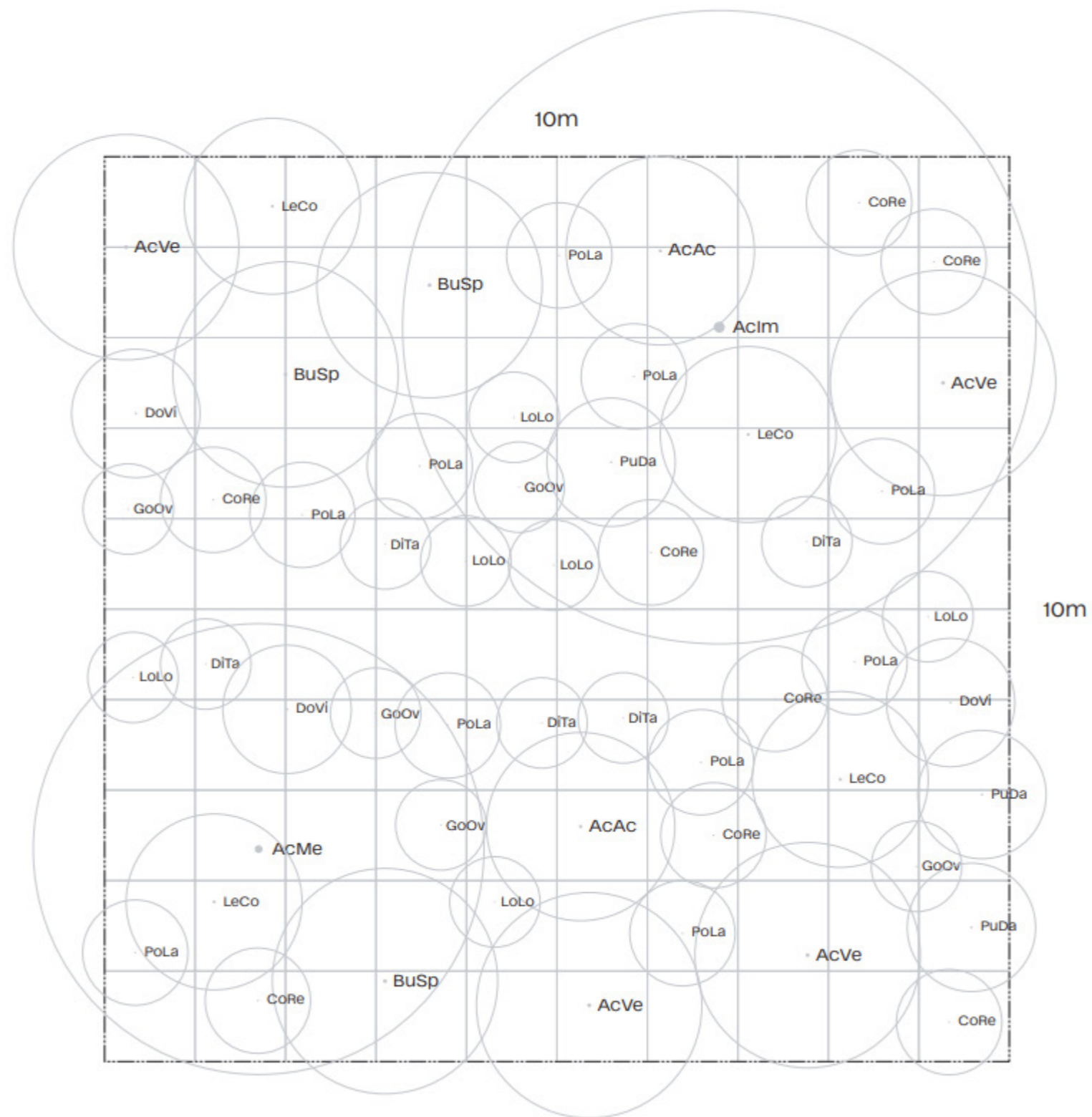
ADVERTISED PLAN



Planting Plan
Year 10 Futures Studio
Woodleigh School
Scale: 1:500 @ A3

20/10/2023
Drawn: Kristen Mahler
Version: 1

Indicative Distribution of Understory/Boundary Planting Detail
Approx 1500 plants to be used across 1200M2



**ADVERTISED
PLAN**

**This copied document to be made available
for the sole purpose of enabling
its consideration and review as
part of a planning process under the
Planning and Environment Act 1987.
The document must not be used for any
purpose which may breach any
copyright**

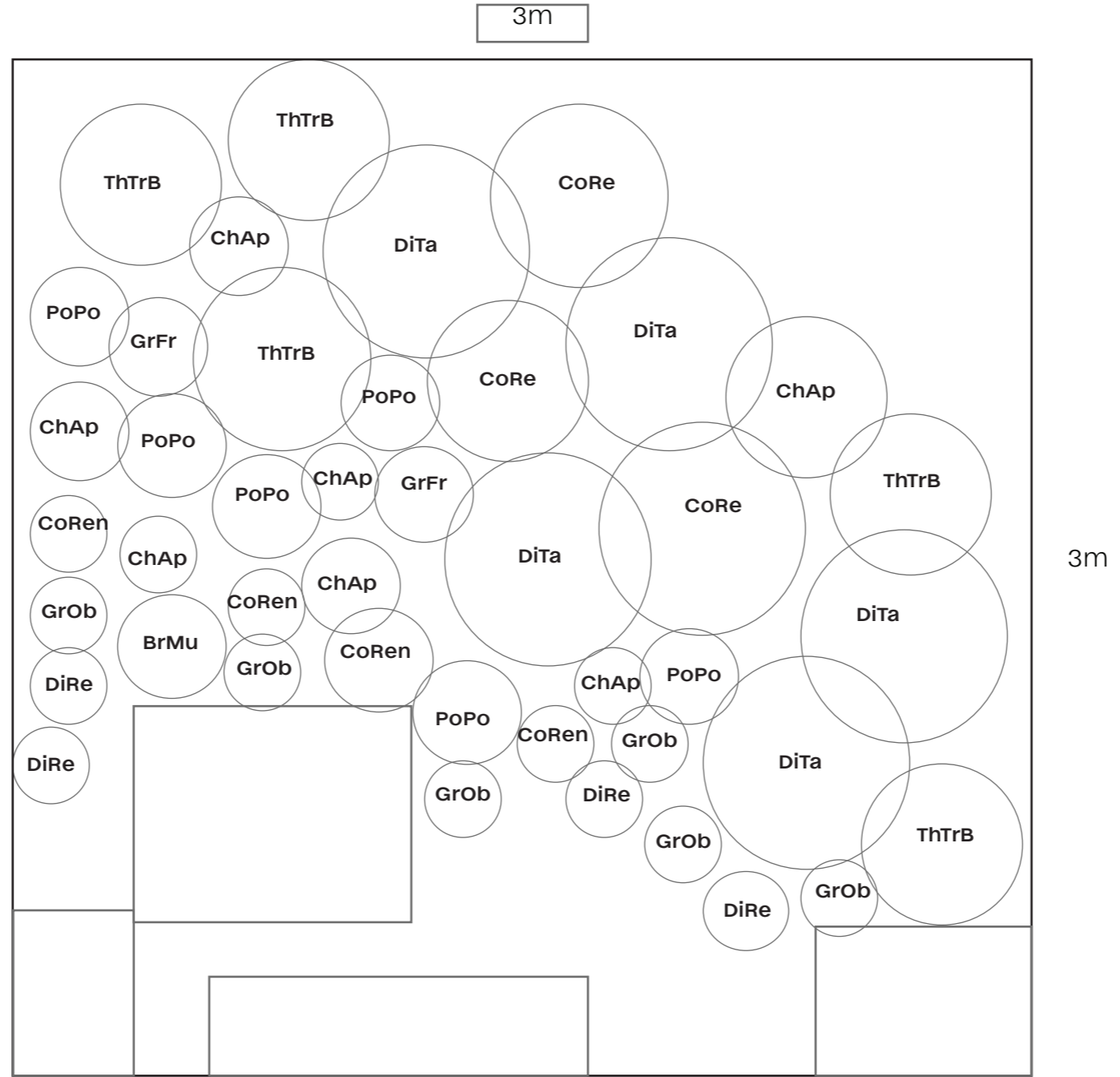


Boundary/Understory
Planting Allocation Detail
Year 10 Futures Studio
Woodleigh School

20/10/2023
Drawn: Kristen Mahler
Version: 1

Indicative Distribution of Traditional Low Planting Detail
Approx 1500 plants to be used across 1200M2

**ADVERTISED
PLAN**



**This copied document to be made available
for the sole purpose of enabling
its consideration and review as
part of a planning process under the
Planning and Environment Act 1987.
The document must not be used for any
purpose which may breach any
copyright**



Traditional low planting
allocation detail
Year 10 Futures Studio
Woodleigh School

20/10/2023
Drawn: Kristen Mahler
Version: 1

Year 10 Futures Studio
Woodleigh School

GROUNDCOVERS & CLIMBERS

LEGEND	#	SPECIFICATION	SPECIES NAME	COMMON NAME	HEIGHT (m)	WIDTH (m)	DESCRIPTION
BrMuBRD	10	Native	Brachyscome multifida 'Break of day'	Native Daisy	0.3	0.5	• Compact mounding plant with fine-leafed green foliage and purple daisy flowers produced year-round.
GrBR	15	Native	Grevillea 'Bronze Rambler'	Bronze Rambler Grevillea	0.3	5	• Dense matted groundcover with bronze-red and green foliage. Purple- red flowers appear throughout the year.
GrOb	15	Native	Grevillea obtusifolia	Gin Gin Gem	0.5	2	• Prostrate, mat-forming shrub with dense green foliage. Red and cream flowers bloom from winter to autumn.
MyPa	25	Native	Myoporum parvifolium	Creeping Boobialla	0.3	3	• Dense matted groundcover with bright green foliage. Star shaped flowers bloom from winter to summer.
MyPaF	25	Native	Myoporum parvifolium (fine leaf form)	Creeping Boobialla	0.3	3	• Dense matted groundcover with fine, bright green foliage. Star shaped flowers bloom from winter to summer.
ScAl	25	Native	Scaevola albida 'Blue'	Fan Flower	0.2	2	• Vigorous groundcover plant with bright-green, fine foliage and a profusion of blue flowers from spring to autumn.
BrDi	30	Indigenous	Brachyscome diversifolia	Tall Daisy	0.5	0.3	• Robust tufted daisy with white flowers, yellow centres and long slender stalks.
BrMu	50	Indigenous	Brachyscome multifida	Native Daisy	0.3	0.5	• Compact mounding plant with fine-leafed green foliage and purple daisy flowers produced year-round.
BrMuW	50	Indigenous	Brachyscome multifida 'White'	Native Daisy	0.3	0.5	• Compact mounding plant with fine-leafed green foliage and white daisy flowers produced year-round.
BrVi	50	Indigenous	Bracteantha viscosa	Shiny Everlasting	0.4	0.3	• Erect, multi-stemmed herb with papery bright yellow daisy flowers blooming from spring to autumn.
ChSe	50	Indigenous	Chrysocephalum semipapposum	Clustered Everlasting	0.5	1	• Sparse, erect, sprawling, perennial herb forming yellow clustered flowers in late winter and spring.
ChAp	75	Indigenous	Chrysocephalum apiculatum	Common Everlasting	0.3	1	• Dense, sprawling perennial herb forming yellow clustered flowers in late winter and spring.
DiRe	50	Indigenous	Dichondra repens	Kidney Weed	0.1	2	• Dense, creeping perennial herb with deep green kidney shaped leaves.
HaVi	30	Indigenous	Hardenbergia violacea	Purple Coral-Pea	2	2	• Twining prostrate sub-shrub with leathery dark green egg-shaped leaves and deep purple flowers appearing during winter and spring.
HiSc	50	Indigenous	Hibbertia scadens	Guinea Flower	2	2	• Vigorous twining plant with bright green foliage and large yellow flower appearing late spring and summer.
KePr	50	Indigenous	Kennedia prostrata	Running Postman	0.1	1	• Prostrate twining woody and herbaceous stems with red flowers.
PuPe	50	Indigenous	Pultenea pendunculata	Matted Bush-Pea	0.1	1	• Dense, matted groundcover with tightly packed bright-green foliage and small yellow to red flowers occurring during spring.
XeVi	50	Indigenous	Xerochrysum viscosum	Sticky Everlasting	0.75	0.5	• Low growing annual with dense clustered yellow flowers that bloom from later winter through spring.

GRASS, LILLIES & SEDGES

LEGEND	#	SPECIFICATION	SPECIES NAME	COMMON NAME	HEIGHT (m)	WIDTH (m)	DESCRIPTION
AnFl	15	Native	Anigozanthos flavidus 'red'	Red Kangaroo Paw	2	1	• Strappy, leathery, dark green leaves with towering floral stems supporting vibrant red paw shaped flowers.
AnFIR	15	Native	Anigozanthos 'Big Red'	Big Red Kangaroo Paw	2	1	• Strappy dark green leaves with towering floral stems supporting vibrant red paw shaped flowers.
DiCa	25	Native	Dianella caerulea	Native Flax	0.6	1	• Perennial, strappy leafed, clumping herb. Lavender to violet flowers occur in spring and summer followed by edible blue berries.
LoCo	25	Native	Lomandra confertifolia	Lomandra 'Crackerjack'	0.6	0.6	• Deep green, fine, strappy-leafed, tufted perennial
OrMu	25	Native	Orthrosanthus multiflorus	Morning Iris	0.3	0.3	• Tufted, strappy leafed plant with starry-blue flowers blooming in profusion during spring and summer.
ThTRB	15	Native	Themeda triandra 'Blue'	Kangaroo Grass	0.7	0.5	• Dense, tufted grass with blue-green drying to red foliage. Produces red-brown spikelet seed heads from December to February.
CaAp	25	Indigenous	Carex appressa	Tall Sedge	1.2	1	• Tufted, bright-green, strappy leafed sedge with rust-brown flower stalks ascending from later winter to summer.
DiTa	25	Indigenous	Dianella tasmanica	Tasman Flax Lily	1	0.8	• Perennial with attractive vibrant-green foliage. Lavender to violet flowers occur in spring to summer followed by edible blue berries.
LoLo	50	Indigenous	Lomandra longifolia	Spiny Toothed Matrush	1	1	• Glossy-green, strappy leafed, tufted perennial. Clustered flowers bloom during spring.
MiSt	25	Indigenous	Microlaena stipoides	Weeping Grass	0.4	0.2	• Soft, emerald green grass that can be mown to form a lawn or be left to produce graceful pendulous seed-heads.
PoLa	50	Indigenous	Poa labillardierei	Common Tussock Grass	1	0.8	• Dense, tufted grass with greyish-green or blue-green leaves. Delicate plumes occur in late spring to summer.
PoEn	50	Indigenous	Poa ensiformis	Purple Sheathed Tussock Grass	1.2	1	• Tussock forming robust perennial grass with rough dark leaves and purple heads.
PoPo	25	Indigenous	Poa poiformis	Tussock Grass	0.5	0.5	• Tussock forming perennial grass with weeping needle-like dark green foliage.
PoSi	25	Indigenous	Poa sieberiana	Grey Tussock Grass	0.7	0.7	• Tussock forming perennial grass with needle-like grey green foliage forming a rounded shape. Erect flower stems appear during spring.
ThTr	25	Indigenous	Themeda triandra	Kangaroo Grass	0.7	0.5	• Dense, tufted grass with green drying to red foliage. Produces red-brown spikelet seed heads from December to February.

**ADVERTISED
PLAN**

This copied document to be made available for the sole purpose of enabling its consideration and review as part of a planning process under the Planning and Environment Act 1987. The document must not be used for any purpose which may breach any copyright

PLANTS SCHEDULE

Year 10 Futures Studio
Woodleigh School

This copied document to be made available for the sole purpose of enabling its consideration and review as part of a planning process under the Planning and Environment Act 1987. The document must not be used for any purpose which may breach any copyright

SHRUBS

LEGEND	#	SPECIFICATION	SPECIES NAME	COMMON NAME	HEIGHT (m)	WIDTH (m)	DESCRIPTION
BaEr	15	Native	Banksia ericifolia 'Dwarf'	Heath-leafed Banksia	2	2	• Small, dense, rounded shrub with narrow, waxy green leaves and orange-maroon flowers blooming during winter and spring.
CaKPS	12	Native	Callistemon 'King's Park Special'	Bottlebrush	4	4	• Compact shrub with bright-red bottlebrush flowers blooming during spring and autumn.
CoBa	25		Correa baeuerlenii	Chef's Hat Correa	2	2	• Medium shrub with dense rounded habit. Foliage is a deep glossy green whilst pendulous cream-green flowers bloom through winter.
CoDB	25	Native	Correa 'Dusky Bells'	Native Fuchsia	1	2	• Compact mounding shrub with bright green leaves. A profusion of pink-red flowers bloom during winter and spring.
CoDe	20		Correa decumbens	Spreading Correa	0.3	2	• A low growing shrub with attractive green foliage. Winter flowering with tubular, red flowers.
CoGl	20	Native	Correa glabra	Rock Correa	2	2	• Upright dense shrub with bright-green foliage and cream, tubular flowers.
CoLa	15	Native	Correa lawrenceana	Mountain Correa	5	4	• Large, erect shrub with glabrous, dark-green foliage. Cream-green, pendulous flower bloom from winter to spring.
CoRe	25	Native	Correa reflexa	Native Fuchsia	0.5	0.5	• Low growing shrub with pink-red flowers occurring year round.
CoReN	20	Native	Correa reflexa 'Nummularifolia'	Native Fuchsia	0.3	1	• Compact spreading shrub with grey-green leathery foliage. Cream flowers bloom from autumn to spring.
ERGI	15	Native	Eremophila glabra 'Kalbarria Carpet'		0.5	3	• Prostrate shrub with soft, grey foliage, producing yellow flowers during spring and summer.
GaCe	15	Native	Gastrolobium celsianum	Swan River Pea	1	1	• Prostrate, scrambling shrub with grey-green to silvery foliage and dark red pea flowers occurring from late winter through to spring.
GrFR	15	Native	Grevillea 'Forest Rambler'	Forest Rambler Grevillea	0.5	3	• Low, spreading shrub with spiky, bright-green foliage and pale-purple and yellow flowers blooming during spring.
GrNK	10	Native	Grevillea 'Ned Kelly'	Ned Kelly Grevillea	2	2	• Spreading medium sized shrub with grey-green foliage and apricot-orange blooms appearing year-round.
GrOI	10	Native	Grevillea olivacea	Olive Grevillea	4	2	• Medium shrub with dense grey-green foliage and apricot-orange blooms occurring during winter and spring.
KuBa	10	Native	Kunzea baxteri	Crimson Kunzea	4	5	• Medium, spreading shrub with fine, dense dark green foliage and showy, crimson bottlebrush flowers blooming sporadically for most of the year.
LePC	15	Native	Leptospermum 'Pink Cascade'		0.8	1.5	• Compact shrub with cascading, green limbs and green foliage. Dante, pastel-pink flowers bloom during spring.
MeHy	10	Native	Melaleuca hypericifolia	Honey Myrtle	3	3	• Compact shrub with tightly packed bright green foliage. Terracotta, bottlebrush flowers bloom during summer.
MeHyUB	15	Native	Melaleuca hypericifolia 'Ulladulla Beacon'	Honey Myrtle	0.6	3	• Prostrate shrub with tightly packed bright green foliage. Terracotta, bottlebrush flowers bloom during summer.
PrOv	15	Native	Prostanthera ovalifolia	Oval leafed Christmas Bush	5	4	• Compact shrub with dull-green oval shaped foliage. Smothering of lilac flowers occurs during spring.
ThSa	15	Native	Thryptomene saxicola	Rock Thryptomene	1.5	2	• Compact, low growing shrub with fine foliage and a profusion of dante, pink flowers blooming during winter and spring.
WeFrWG	10	Native	Westingia 'Wynyabbie Gem'	Coastal Rosemary	1.5	1.5	• Dense, rounded shrub dotted with tightly packed grey-green foliage. Dotted with masses of small mauve flowers during spring and summer.
AcAc	50	Indigenous	Acacia acinacea	Golden Dust Wattle	2	2	• Medium shrub massed with golden, ball flowers in spring.
AcVe	50	Indigenous	Acacia verticillata	Prickly Moses	4	3	• Rounded shrub with fine, prickly foliage providing textural interest and refuge for small birds. Cream-yellow flower spikes bloom along branches in winter and early spring.
BuSp	25	Indigenous	Bursaria spinosa	Sweet Bursaria	4	4	• Large shrub with small, shiny dark-green leaves occurring along stems. Massed, small white flowers occur from spring to summer followed by brown seed capsules.
CoAl	75	Indigenous	Correa alba	White Correa	2	2	• Medium shrub with dense round habit. Dante white flowers occur from winter to spring.
CoRe	75	Indigenous	Correa reflexa	Native Fuchsia	0.5	0.5	• Low growing shrub with pink-red flowers occurring year round.
DoVi	25	Indigenous	Dodonea viscosa	Hop Bush	3	3	• Large shrub with dense shiny-green foliage. Small inconspicuous flowers occur in summer followed by striking red seed capsules.
GoOv	50	Indigenous	Goodenia ovata	Hop Goodenia	2	3	• Medium shrub massed with golden ball flowers in spring.
LeCo	25	Indigenous	Leptospermum continentale	Prickly Tea-Tree	4	2	• Medium sized, erect shrub with dark green, pointed foliage. Becomes dotted with small white flowers from spring to autumn.
PuDa	15	Indigenous	Pultenea daphnoides	Large-leaf Bush Pea	3	2	• Compact shrub with small, flat, wedge shaped leaves and yellow-brown pea flowers. blooming during winter and spring.

TREES

LEGEND	#	SPECIFICATION	SPECIES NAME	COMMON NAME	HEIGHT (m)	WIDTH (m)	DESCRIPTION
CoCl	6	Native	Corymbia citriodora	Lemon Scented Gum	25	20	• Large upright tree with open crown and powdery-creamy bark. Leaves are slender and waxy green. White flowers blooming during summer.
CoFi	5	Native	Corymbia ficifolia	Flowering Gum	10	10	• Small tree with compact, rounded shape and rough-brown bark. Leaves are dark-green. Bears a profusion of brightly coloured flowers during summer, ranging from pinks to reds to purples.
EuCl	10	Native	Eucalyptus leucoxylon	Yellow Gum	20	20	• Medium, spreading tree with attractive open canopy. Leaves green to grey-green with profusion of red or yellow flowers produced from winter to spring.
EuSC	5	Native	Eucalyptus scoparia	Wallangarra White Gum	15	10	• Small tree with smooth, white to pale-grey bark. Pendulous branches produce shiny-green leaves and small, white flowers in spring and summer.
EuSi	10	Native	Eucalyptus sideroxylon	Red Ironbark	20	20	• Large upright tree with thick, hard, furrowed bark. Leaves glaucous green. White flowers bloom during winter.
MeAZ	3	Native	Melia azedarach	White Cedar	6- 15	8	• Small to medium australian deciduous tree (fruits are toxic!)
AcIm	20	Indigenous	Acacia implexa	Lightwood	15	10	• Medium, upright tree with dark-brown fibrous bark. Slender, waxy-green leaves. Lemon flowers occur during summer.
AcMe	35	Indigenous	Acacia melanoxylon	Blackwood	20	15	• Medium, spreading tree with dark-brown fibrous bark. Foliage is deep-waxy green with a profusion of lemon floral spheres occurring in Spring.
AlLi	15	Indigenous	Allocasuarina littoralis	Black Sheoak	12	6	• Upright tree with dark-green, needle-like leaves and fissured bark. Male flower spikes are brown, whilst female flower spikes are red occurring from autumn to winter.
AlVe	15	Indigenous	Allocasuarina verticillata	Drooping Sheoak	20	15	• Upright tree with dark green needle-like hanging leaves and thick furrowed bark. Male flower spikes are brown, whilst female flower spikes are red, occurring from autumn to winter.
Baln	20	Indigenous	Banksia integrifolia	Banksia Integrifolia	20	15	• Medium, spreading tree with rough, patterned bark and long, green leaves with a silver underside. Pale, cylindrical flowers occur summer to winter.
EuPa	20	Indigenous	Eucalyptus pauciflora	Snow Gum	30	20	• Medium upright tree with smooth white bark. Lance-shaped leaves are grey to olive green. Profusion of white flowers from October to January.
LeLa	20	Indigenous	Leptospermum laevegatum	Coastal Tea Tree	15	15	• Low growing small tree with fibrous dark-brown bark and dense twisted limbs. Small oval grey green leaves. Bares a profusion of white flowers from spring to summer.

TOTAL: 2023

PLANTS SCHEDULE

ADVERTISED PLAN