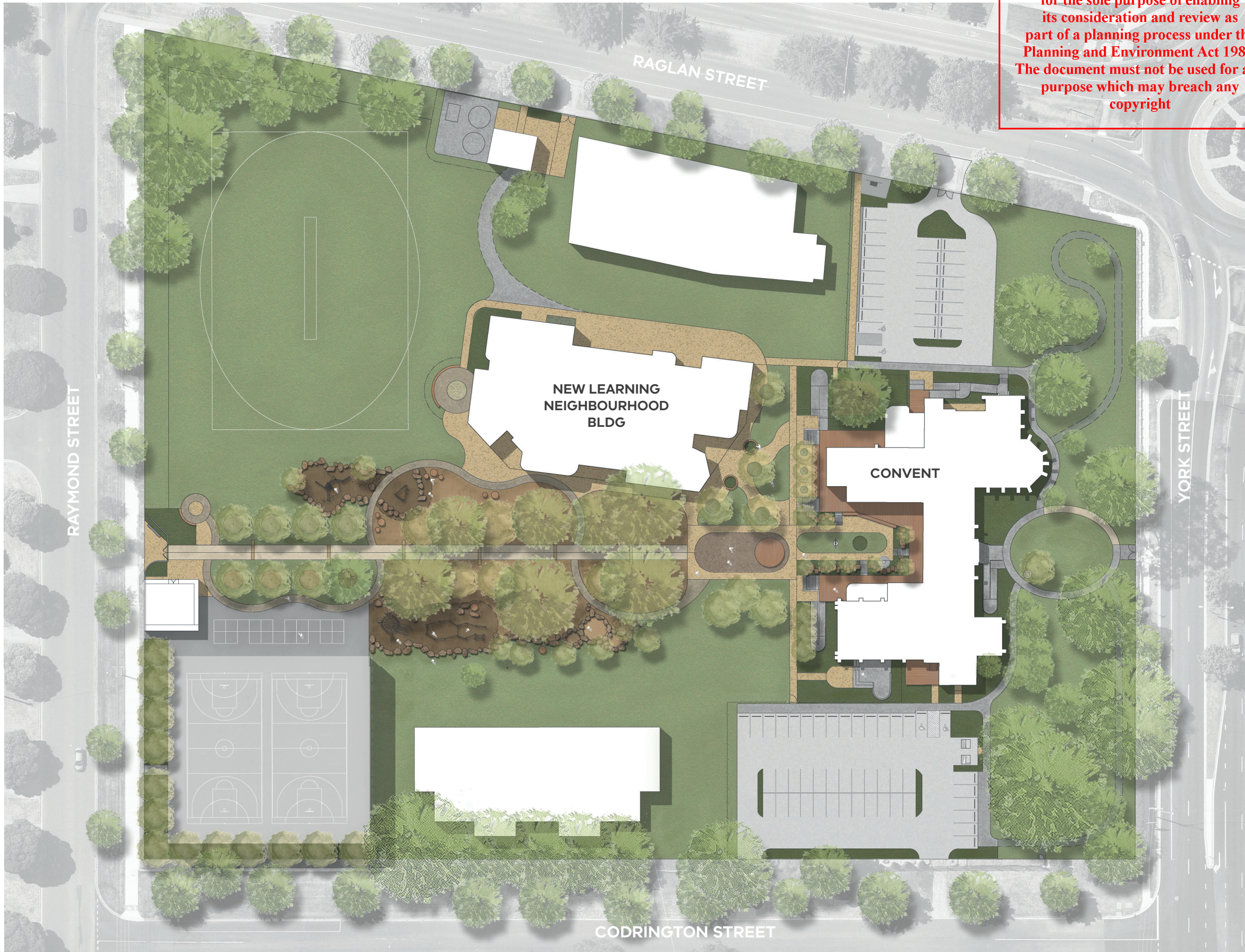


This copied document to be made available for the sole purpose of enabling its consideration and review as part of a planning process under the Planning and Environment Act 1987. The document must not be used for any purpose which may breach any copyright



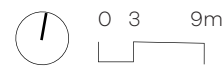
**LEGEND**

- PAV1 - Standard grey concrete paving with light exposed aggregate finish.
- PAV2 - Central space. Compacted Dromana (granite) toppings.
- PAV3 - Multi-purpose court surface. Asphalt with acrylic linemarking.
- PAV4 - Coloured concrete with light exposed aggregate finish.
- PAV5 - St Thomas Walk. Coloured concrete with broom finish.
- PAV6 - Sion Walk Paving Bands. Limestone or light coloured concrete.
- PAV7 - Sion Walk. Coloured concrete with rock salt finish.
- Garden Bed
- Lawn
- Decking or Seating
- Mulch Soft Fall

**ADVERTISED PLAN**

**PRELIMINARY PLANT LIST**

<i>Scientific Name</i>	<i>Common Name</i>
<b>Trees</b>	
Eucalyptus melliodora	Yellow Box
Juglans regia	English Walnut
Laurus nobilis	Bay
Malus pumila	Apple
Olea europea	Olive
Quercus robur	English Oak
Taxus baccata	Yew
Ulmus procera	English Elm
<b>Shrubs</b>	
Acanthus mollis	Acanthus
Ajuga reptans	Carpet Bugle
Convolvulus cneorum	Silverbush
Cistus ladanifer	Rock Rose
Cyathea australis	Rough Tree Fern
Dicksonia antarctica	Soft Tree Fern
Juniperus sabina	Sabine Juniper
Leptospermum lanigerum	Woolly Tea Tree
Ligustrum ovalifolium	Japanese Privet
Murraya paniculata	Orange Jessamine
Nepeta Six Hills Giant	Catmint
Prunus lusitanicus	Portuguese Laurel
Pelargonium peltatum	Pelargonium
Raphiolepis indica	Indian Hawthorn
Rosmarinus officinalis	Rosemary
Stachys byzantina	Lamb's Ear
Senecio serpens	Blue Chalk Sticks
Viola odorata	Sweet Violet
<b>Climbers</b>	
Vitis coignetiae	Crimson Glory Vine
<b>Herbs</b>	
Rue graveolans	Rue
Thymus serpyllum 'Alba'	Thyme
<b>Grasses &amp; Tussocks</b>	
Arthropodium cirratum	Renga Lily
Clivea miniata	Clivea
Dianella 'Breeze'	Flax Lily
Iris x germanica	Iris
Lomandra 'Tanika'	Mat Rush
Poa labillardieri	Tussock Grass








<h1>3 Acres</h1> <p>Landscape Architecture</p>	Central Goldfields Art Gallery Indigenous Interpretive Garden Landscape Works	Landscape Materials & Colour Schedule 25.08.23 [T3]
	Project No. 23360	

*Disclaimer:*

*For definition and performance criteria of an approved alternative, General Requirements – Interpretations.*



Item	Item	Code	Design Code/Colour	Distributor/Manufacturer	Example Images/Comments
------	------	------	--------------------	--------------------------	-------------------------

LANDSCAPE WORKS

	Paving Type 1 Exposed Aggregate Finish Standard Grey In-situ Concrete	PAV1	Exposed Aggregate Coloured Concrete Strength: 32 MPa <u>Finish: Very Light grit-blast exposed aggregate finish.</u> Even slip resistance. Control joints: Sawcut crack control joints. Expansion joints: 8m maximum spacing, 10mm maximum width, ableflex filler, sealant to match concrete. Sealant: Miteq penetrating sealer 102 or similar approved	TBC	
	Paving Type 2 Compacted Granitic Gravel	PAV2	Compacted granitic gravel Colour: Yellow/Brown Size: 5mm minus gravel Depth: 50mm Sub-base: 100mm depth class 3 FCR 95% MMD. Edging as detailed & specified.	Soilworx 1150 Koo Wee Rup Road Pakenham Vic 3810 T 9361 1300 OR SIMILAR APPROVED	
	Paving Type 3 Multi-purpose Court Surface	PAV3	Coloured Concrete Strength: 32 MPa Finish: <del>Steel</del> Float Finish Even slip resistance. Control joints: Sawcut crack control joints.	Geostone 'Spinel' Holcim Geostone Newhaven Display Centre 886 Phillip Island Rd Newhaven VIC 3925 OR SIMILAR APPROVED	



**This copied document to be made available for the sole purpose of enabling its consideration and review as part of a planning process under the Planning and Environment Act 1987. The document must not be used for any purpose which may breach any copyright**

**ADVERTISED  
PLAN**

			Expansion joints: 8m maximum spacing, 10mm maximum width, ableflex filler, sealant to match concrete. Sealant: Miteq penetrating sealer 102 or similar approved		
	Paving Type 4 Exposed Aggregate Finish In-situ Concrete	PAV4	Exposed Aggregate Coloured Concrete Strength: 32 MPa <u>Finish: Very Light grit-blast exposed aggregate finish.</u> Even slip resistance. Control joints: Sawcut crack control joints. Expansion joints: 8m maximum spacing, 10mm maximum width, ableflex filler, sealant to match concrete. Sealant: Miteq penetrating sealer 102 or similar approved	Geostone 'Brighton 20' Holcim Geostone Newhaven Display Centre 886 Phillip Island Rd Newhaven VIC 3925 OR SIMILAR APPROVED	 Note: Supplier colour and aggregate shown. <u>Paving to have a very light grit-blast exposed aggregate finish.</u> Contractor to prepare sample panel for approval prior to remainder.
	Paving Type 5 Broom Finish Coloured Concrete	PAV5	Coloured Concrete Strength: 32 MPa Finish: Broom Finish Even slip resistance. Control joints: Sawcut crack control joints. Expansion joints: 8m maximum spacing, 10mm maximum width, ableflex filler, sealant to match concrete. Sealant: Miteq penetrating sealer 102 or similar approved	Geostone 'Flint' Holcim Geostone Newhaven Display Centre 886 Phillip Island Rd Newhaven VIC 3925 OR SIMILAR APPROVED	

**This copied document to be made available for the sole purpose of enabling its consideration and review as part of a planning process under the Planning and Environment Act 1987. The document must not be used for any purpose which may breach any copyright**

**ADVERTISED  
PLAN**

	Paving Type 6 Limestone Paving Bands	PAV6	Limestone Cobbles Tumbled Antique Finish Ruskea by Artisan Exterior or similar approved. P4 Slip Rating 90 x 90 x 20mm on mortar bed and concrete slab.	Artisan Exterior OR SIMILAR APPROVED	
	Paving Type 7 Permeable Rock-salt Finish In-situ Concrete	PAV7	Rocksalt Finish Grey Concrete Strength: 25 MPa Finish: Rocksalt Finish Even slip resistance. Control joints: Sawcut crack control joints. Expansion joints: 8m maximum spacing, 10mm maximum width, ableflex filler, sealant to match concrete. Sealant: Miteq penetrating sealer 102 or similar approved	TBC	

<END>

## ADVERTISED PLAN

**This copied document to be made available  
for the sole purpose of enabling  
its consideration and review as  
part of a planning process under the  
Planning and Environment Act 1987.  
The document must not be used for any  
purpose which may breach any  
copyright**