



PO Box 5171

Ringwood VIC 3134

Phone: 03 8873 3100

Web: [www.activetreeservices.com.au](http://www.activetreeservices.com.au)

Tuesday, 30 June 2020

## Technical Memorandum

### Appendix B7 - Drysdale Street Reserve, Yallambie

#### **Summary**

Below are the details regarding the proposed temporary works within the reserve at the end of Drysdale St adjacent to Lower Plenty Road in Yallambie, and the impact from the works on the eight (8) trees within the assessment area. It is noted that these works are outside the Project Boundary.

It has been concluded that of the eight (8) trees located in the assessment area:

- Temporary works intrude into the Tree Protection Zone of one (1) Tree that is of high amenity and retention value.
- One tree is dead and recommended for removal.

#### **Introduction**

The following issues are addressed within this report:

- An assessment of the health and structural condition of these trees.
- Evaluation of the suitability of retention based on the arboricultural attributes of these trees.
- Evaluation of the likely impact of the project on these trees.
- Recommendations as required to reduce the impact on these trees.

This report is based on the plans provided and on observations during the site assessment and has been written in compliance with AS 4970 – 2009 Protection of trees on development sites.

These trees were inspected by Marc Coustley of Active Tree Services Pty Ltd on the 15<sup>th</sup> of May 2020.

#### **Proposed Works**

The proposed works include the following:

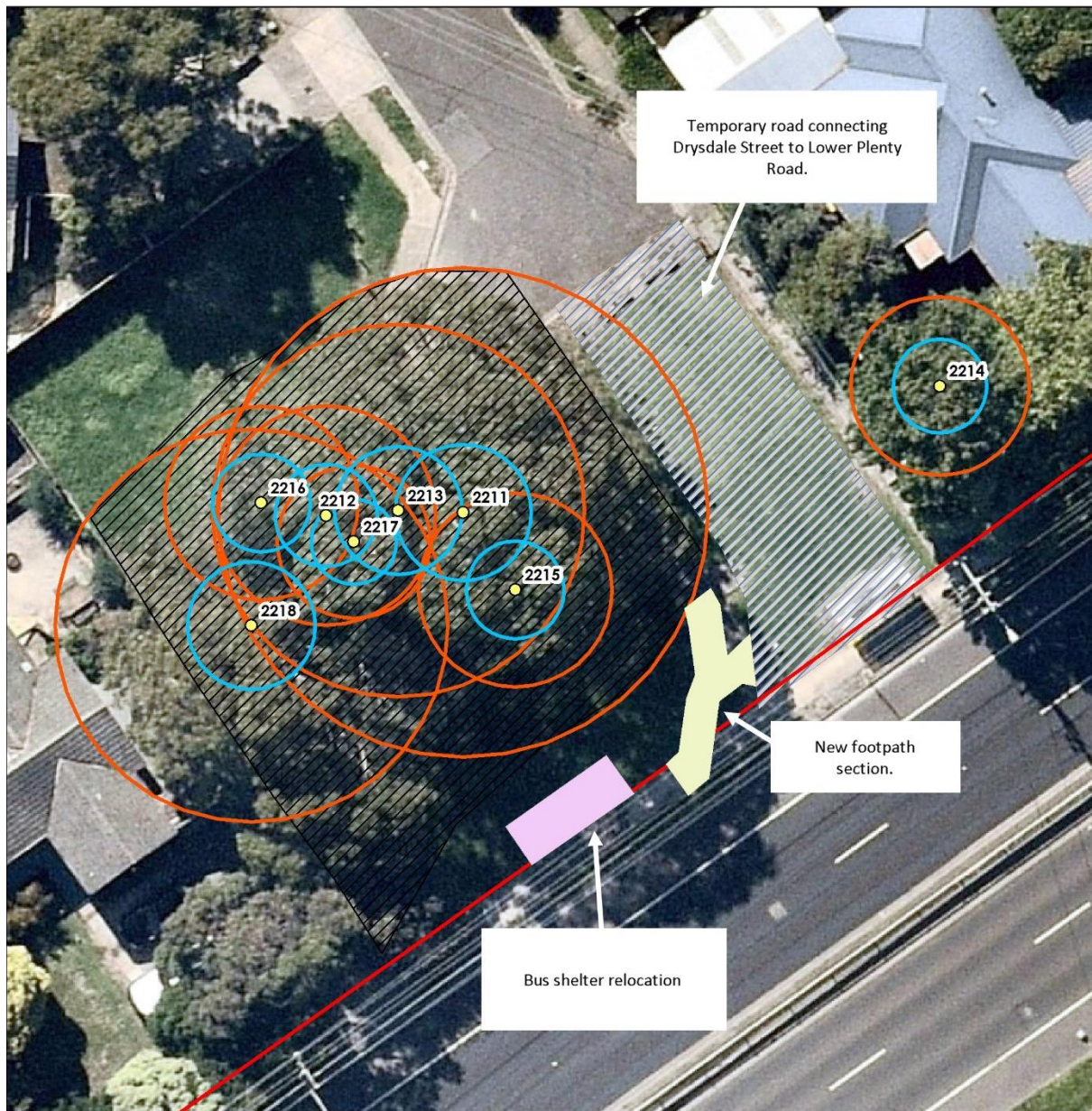
- Construction of temporary road pavement and access to Lower Plenty Road.
- Temporary relocation of the existing bus shelter on Lower Plenty Road

This assessment is based on a review of the following plans:

- Drysdale Street & Lower Plenty Road Intersection for North East Link Project

Site Map

# Drysdale Street Reserve



**Legend**

<b>Trees</b>	TPZ	Footpath	Project Boundary	No Go Zones within project boundary to be fenced off as per Tree Protection Plan were practicable.
Retained	SRZ	No Go Zones		
Removed	Bus Stop	Temp Road		



## Observations & discussion

The primary impact on these trees is from the proposed temporary road connecting Drysdale Street to Lower Plenty Road.

A review of the project plans identified that works may intrude into the Tree Protection Zone of one (1) of the eight (8) trees as listed below.

ID	Genus / species	DBH (cm)	SRZ (m)	TPZ (m)	TPZ Encroachment (%)	ConP (m)	Ret Value
<b>The following 1 tree/s are shown as Retained on the plans provided.</b>							
2211	<i>Eucalyptus camaldulensis</i>	96	3.2	11.5	9.6 %	8	High
SRZ: Structural Root Zone. TPZ: Tree Protection Zone. mTPZ: Tree Protection Zone.(Canopy) ConP: Construction Proximity.							
Number of trees in this section (total): 1							



Figure 1 – Tree 2211

**Tree 2211** is a mature *Eucalyptus camaldulensis* (Red River Gum) of high amenity and retention value. According to the project plans there will be an encroachment of the tree's Tree Protection Zone of approximately 9.6 %. This intrusion is below the 10% defined as minor within AS 4970 – 2009 *Protection of trees on development sites* and it is likely that the impact on this tree will be low.

**Tree 2211** will require clearance pruning to allow for project works and road clearance, as shown in **Figure 1**.

Any pruning must be undertaken by an arborist with minimum qualifications of AQF level 3 in arboriculture, and in accordance with the Australian Standards 4373-2007 *Pruning of amenity trees*.

**Tree 2217** is a dead *Eucalyptus camaldulensis* (Red River Gum) of very low amenity and retention value and is recommended for removal.

## Canopy Loss for Offset requirements

Below is a summary of proposed canopy loss of this location for offset requirements. For the purpose of this report, Native Trees are defined as indigenous to Victoria and Amenity Trees are defined as not indigenous to Victoria. The methodology used to calculate tree canopy was to square the tree width radius, then multiply by 3.14

- A total of 0 trees are proposed for removal.
- A total of 0 square meters of amenity tree canopy is proposed for removal.
- A total of 0 square meters of native tree canopy is proposed for removal.
- Locations of trees to be removed are shown within the site maps.
- A total of 0 square meters of total tree canopy is proposed for removal.

## Scope

Generally, all significant trees and those trees that have been planted that could develop into a significant tree have been assessed.

## Notes

The 'ID' numbers used in this report are not consecutive and have the sole purpose of identifying the tree as part of the entire North East Link Early Works Project.

The locations of any proposed excavation areas or project works shown on the assessment area maps in this report are approximate only and should be proven on site prior to the execution of work.

## Supplementary Information

The following Sections provide further information in regard to the trees in relation to various characteristics. This information is supplied to assist in the management of the project.

### Tree Protection Data for Trees Shown as Retained

Below is a list of all Tree Protection Zones and Structural Root Zones. These are calculated in accordance with *AS4970 – 2009 Protection of trees on development sites*.

ID	Genus / species	DBH	SRZ (m radius)	TPZ (m radius)	Additional Crown Protection?
2211	<i>Eucalyptus camaldulensis</i>	96	3.2	11.5	
2212	<i>Eucalyptus camaldulensis</i>	43	2.4	5.2	
2213	<i>Eucalyptus camaldulensis</i>	73	3	8.8	
2214	<i>Liquidambar styraciflua</i>	35	2.2	4.2	
2215	<i>Crataegus monogyna</i>	38	2.3	4.6	
2216	<i>Crataegus monogyna</i>	38	2.3	4.6	
2218	<i>Eucalyptus melliodora</i>	77	3	9.2	

SRZ = Structural Root Zone; TPZ = Tree Protection Zone:

## Trees listed by origin

The list below has all trees listed by origin where 'Melbourne' denotes trees indigenous to the immediate area, 'Victorian' denotes trees local to Victoria but not the immediate Melbourne area, 'Australian' denotes trees local to Australia but not Victoria. 'Exotic' denotes any tree that is from outside of Australia.

<b>ID</b>	<b>Genus / species</b>	<b>ULE</b>	<b>Form</b>	<b>Ret value</b>	<b>Retained</b>
<b>The following 5 trees are of Melbourne origin</b>					
2211	<i>Eucalyptus camaldulensis</i>	15 - 25	Fair	High	Retained
2212	<i>Eucalyptus camaldulensis</i>	15 - 25	Fair	Moderate	Retained
2213	<i>Eucalyptus camaldulensis</i>	15 - 25	Fair	High	Retained
2217	<i>Eucalyptus camaldulensis</i>	0	Fair	Remove.	Retained
2218	<i>Eucalyptus melliodora</i>	15 - 25	Fair	High	Retained
<b>The following 3 trees are of Exotic origin</b>					
2214	<i>Liquidambar styraciflua</i>	15 - 25	Good	Moderate	Retained
2215	<i>Crataegus monogyna</i>	5 - 15	Fair	Low	Retained
2216	<i>Crataegus monogyna</i>	5 - 15	Fair	Low	Retained

There are 8 trees in this section (total).

## Conclusions

Active Tree Services assessed eight (8) trees for potential impacts relating to the proposed works. Based on the proposed works the following is concluded

- Temporary works intrude into the Tree Protection Zone of one (1) Tree that is of high amenity and retention value.
- One tree will require clearance pruning to allow for project works and road clearance.
- One tree is dead and recommended for removal.

### **Assumptions & limiting conditions**

1. Active Tree Services Pty Ltd (herein after referred to as Active Tree Services) contracts with you on the basis that you promise that all legal information which you provide, including land title and ownership of other property, are correct. Active Tree Services is not responsible for verifying or ascertaining any of these issues.
2. Active Tree Services contracts with you on the basis that your promise that all affected property complies with all applicable statutes and subordinate legislation.
3. Active Tree Services will take all reasonable care to obtain necessary information from reliable sources and to verify data. However Active Tree Services neither guarantees nor is responsible for the accuracy of information provided by others.
4. If, after delivery of this report, you later require a representative of Active Tree Services to attend court to give evidence or to assist in the preparation for a hearing because of this report, you must pay an additional hourly fee at our then current rate for expert evidence.
5. Alteration of this report invalidates the entire report.
6. Active Tree Services retains the copyright in this report. Possession of the original or a copy of this report does not give you or anyone else any right of reproduction, publication or use without the written permission of Active Tree Services.
7. The contents of this report represent the professional opinion of the consultant. Active Tree Services consultancy fee for the preparation of this report is in no way contingent upon the consultant reporting a particular conclusion of fact, nor upon the occurrence of a subsequent event.
8. Sketches, diagrams, graphs and photographs in this report are intended as visual aids, are not to scale unless stated to be so, and must not be construed as engineering or architectural reports or as surveys.
9. Unless expressly stated otherwise:
  - 9.1. The information in this report covers only those items which were examined and reflects the condition of those items at the time of the inspection.
  - 9.2. Our inspection is limited to visual examination of accessible components without dissection, excavation, or probing. There is no warranty or guarantee, express or implied, that even if they were not present during our inspection, problems or defects in plants or property examined may not arise in the future.
10. This agreement supersedes all prior discussions and representations between Active Tree Services and the client on the subject and is the entire agreement and understanding between us.

Yours sincerely,



Marc Coustley.

Dip. Arb  
Cert. III Arb.