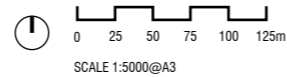
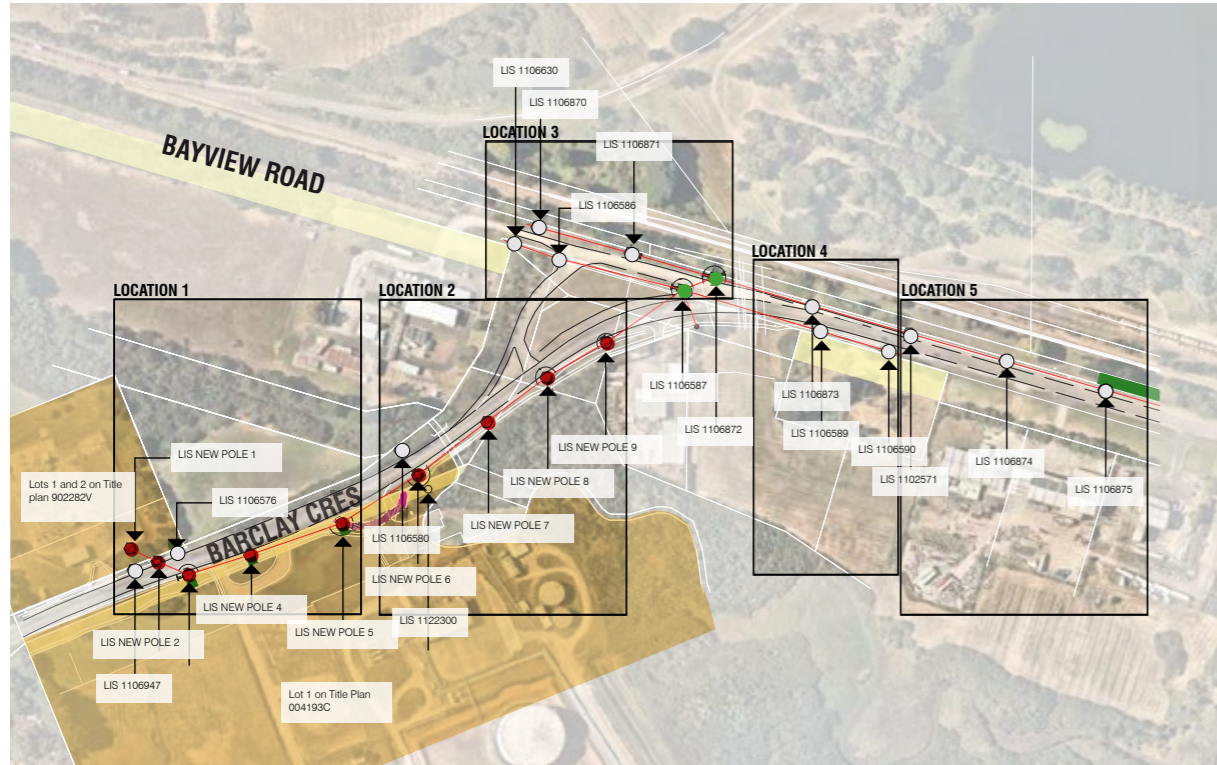


# POWER POLE SITING PLAN

## ADVERTISED PLAN



### LIMITATION OF PLAN

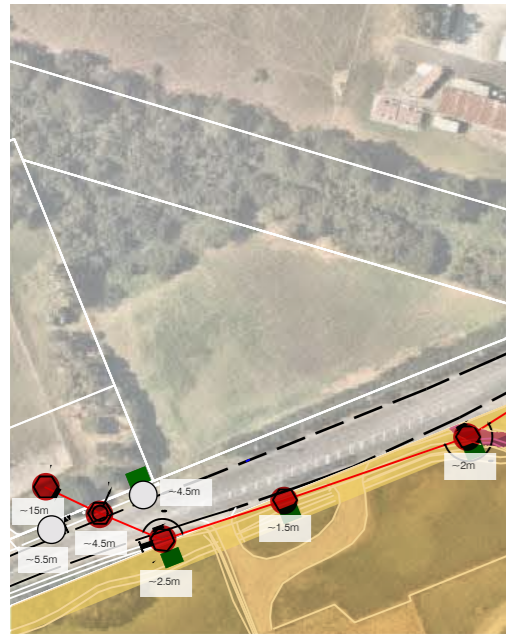
- ▶ New poles will be made of wood materials.
- ▶ Layout is based on United Energy Drawings 3000483 sheets 0-4. Aerial imagery is sourced from nearmap and is approximate in location.
- ▶ Distance from road has been traced from nearmap and is approximate. Detail survey is required for exact dimensions.
- ▶ Distances have been calculated from the edge of road pavement to centre of pole.
- ▶ Data has been collated from <https://www.data.vic.gov.au/>.
- ▶ This plan has been based on MGA 1994 Zone 55.
- ▶ All new and replacement poles shown on this plan will be 12m above ground.
- ▶ Easement location has been taken from Title Plan 004193C and is approximate only. Detail survey is required for exact dimensions.

### LEGEND

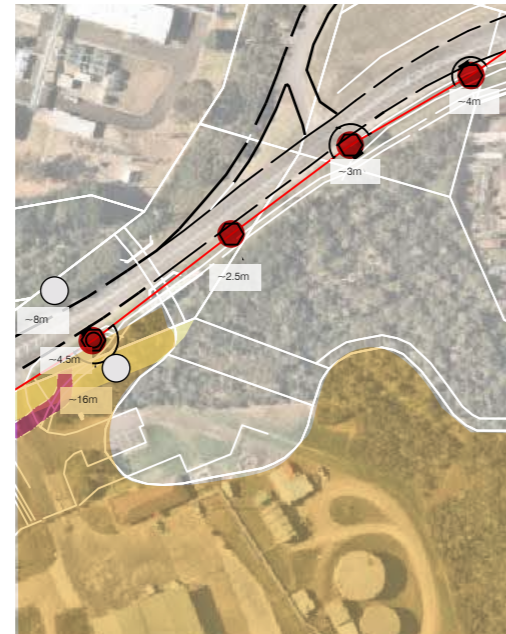
- Property boundaries
- Edge of road pavement
- Existing poles (no change)
- Replacement poles
- New poles
- Vegetation removal or pruning - approximate location. Refer to Biodiversity and Arborist Reports for details.
- Public Acquisition Overlay (PAO)
- Overhead Powerline
- LIS 1106874 Pole Reference Number
- 5.5m Offset from road
- Subject site boundary
- Easement E2

**This copied document to be made available for the sole purpose of enabling its consideration and review as part of a planning process under the Planning and Environment Act 1987. The document must not be used for any purpose which may breach any copyright**

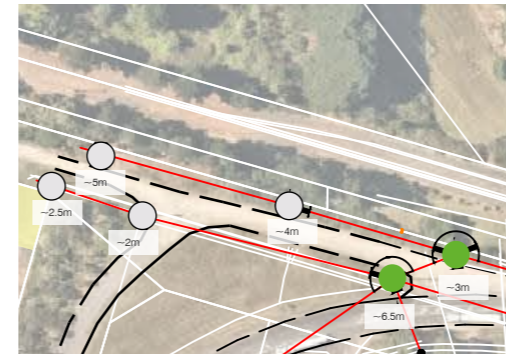
LOCATION 1



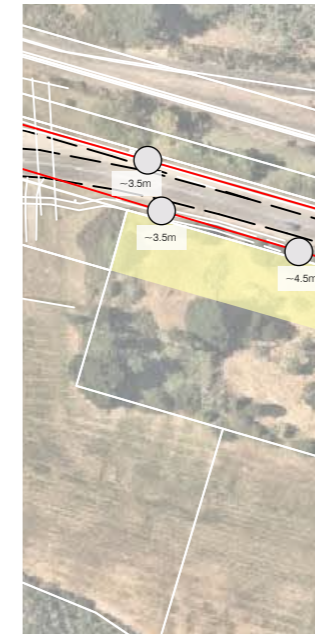
LOCATION 2



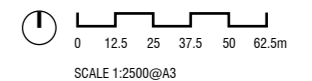
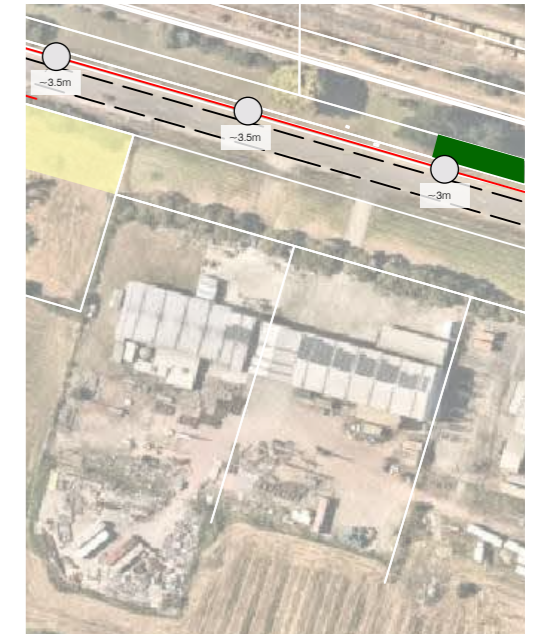
LOCATION 3



LOCATION 4



LOCATION 5



## POWER POLE SITING PLAN

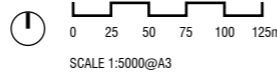
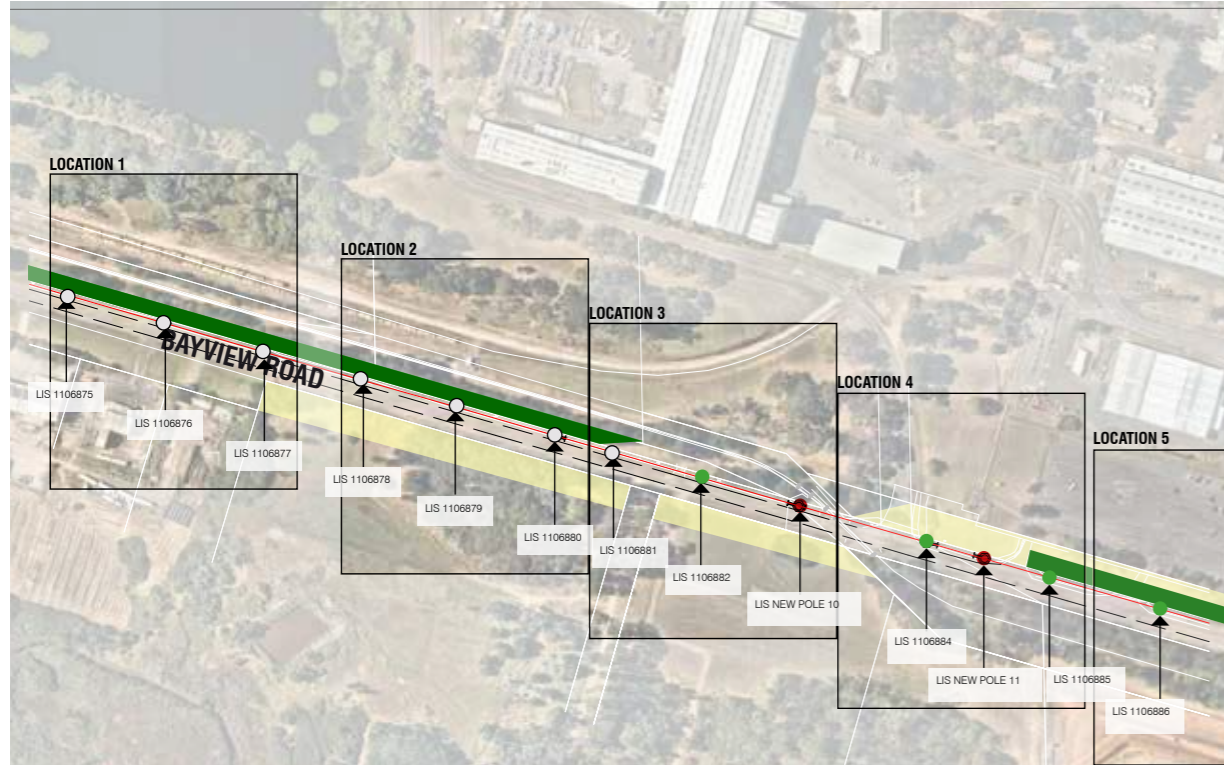
Connection to energy generation facility at 1 Long Island Drive, Hastings

DRG NO.  
309457 ID 01

REV  
01

DATE  
12/04/2022

# POWER POLE SITING PLAN



## ADVERTISED PLAN

### LIMITATION OF PLAN

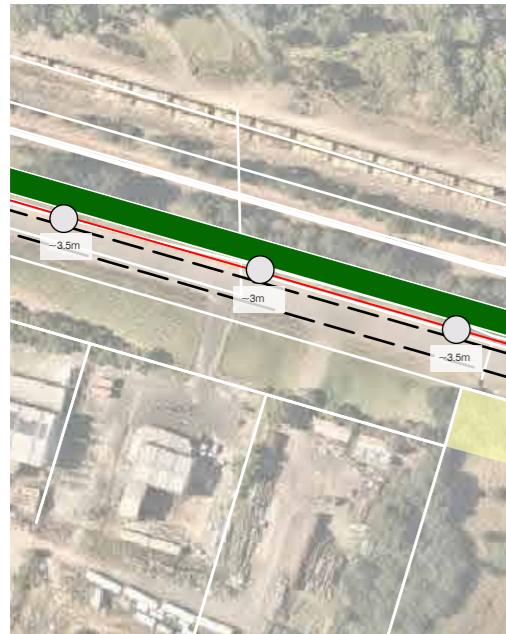
- ▶ New poles will be made of wood materials.
- ▶ Layout is based on United Energy Drawings 3000483 sheets 0-4. Aerial imagery is sourced from nearmap and is approximate in location.
- ▶ Distance from road has been traced from nearmap and is approximate. Detail survey is required for exact dimensions.
- ▶ Distances have been calculated from the edge of road pavement to centre of pole.
- ▶ Data has been collated from <https://www.data.vic.gov.au/>.
- ▶ This plan has been based on MGA 1994 Zone 55.
- ▶ All new and replacement poles shown on this plan will be 12m above ground.

### LEGEND

- Property boundaries
- Edge of road pavement
- Existing poles (no change)
- Replacement poles
- New poles
- Vegetation removal or pruning - approximate location. Refer to Biodiversity and Arborist Reports for details.
- Public Acquisition Overlay (PAO)
- Overhead Powerline
- LIS 1106874 Pole Reference Number
- 5.5m Offset from road
- Subject site boundary

This copied document to be made available for the sole purpose of enabling its consideration and review as part of a planning process under the Planning and Environment Act 1987. The document must not be used for any purpose which may breach any copyright

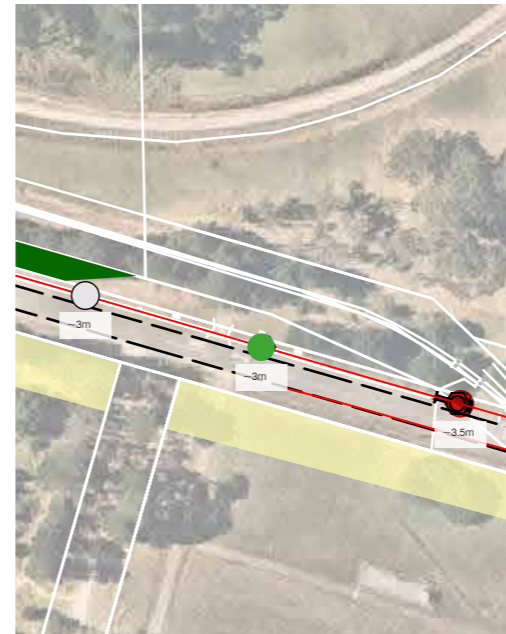
LOCATION 1



LOCATION 2



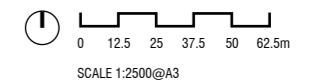
LOCATION 3



LOCATION 4



LOCATION 5



## POWER POLE SITING PLAN

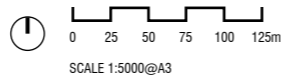
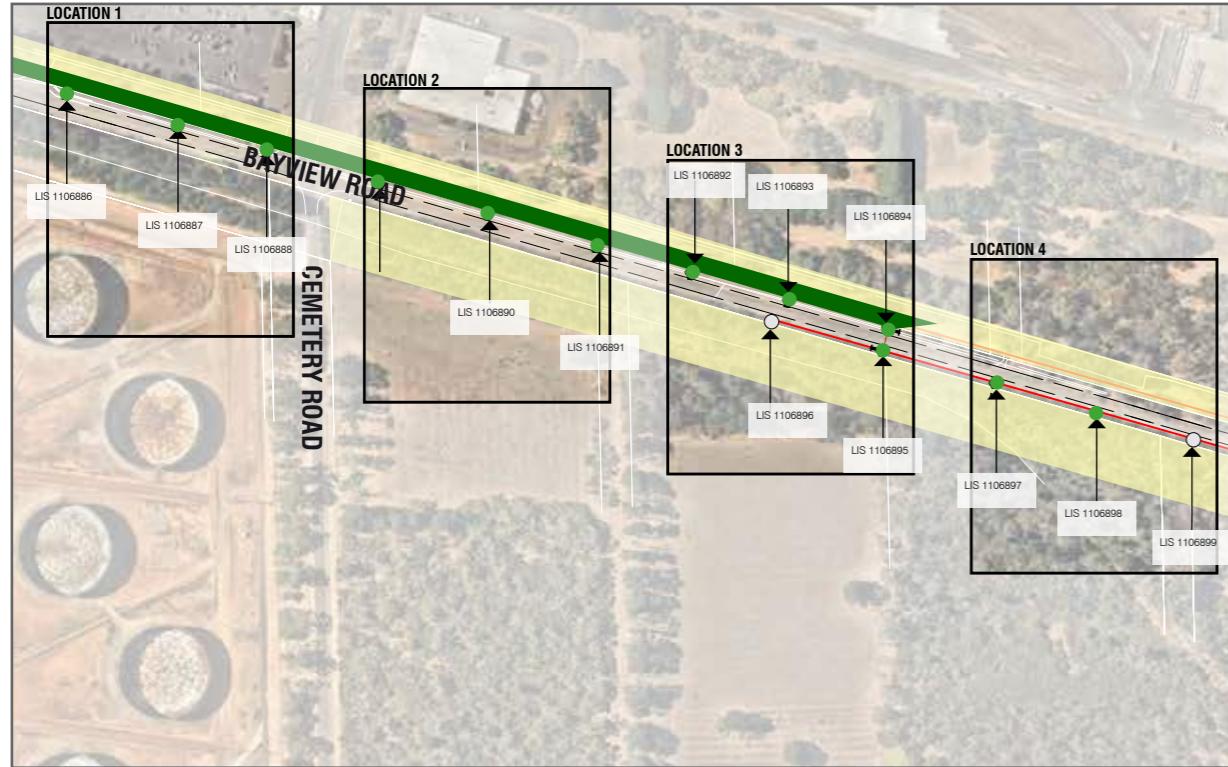
Connection to energy generation facility at 1 Long Island Drive, Hastings

DRG NO.  
309457 ID 01

REV  
01

DATE  
12/04/2022

# POWER POLE SITING PLAN



## ADVERTISED PLAN

### LIMITATION OF PLAN

- ▶ New poles will be made of wood materials.
- ▶ Layout is based on United Energy Drawings 3000483 sheets 0-4. Aerial imagery is sourced from nearmap and is approximate in location.
- ▶ Distance from road has been traced from nearmap and is approximate. Detail survey is required for exact dimensions.
- ▶ Distances have been calculated from the edge of road pavement to centre of pole.
- ▶ Data has been collated from <https://www.data.vic.gov.au/>.
- ▶ This plan has been based on MGA 1994 Zone 55.
- ▶ All new and replacement poles shown on this plan will be 12m above ground.

### LEGEND

- Property boundaries
- Edge of road pavement
- Existing poles (no change)
- Replacement poles
- New poles
- Vegetation removal or pruning - approximate location. Refer to Biodiversity and Arborist Reports for details.
- Public Acquisition Overlay (PAO)
- Overhead Powerline
- LIS 1106874 Pole Reference Number
- 5.5m Offset from road
- Subject site boundary

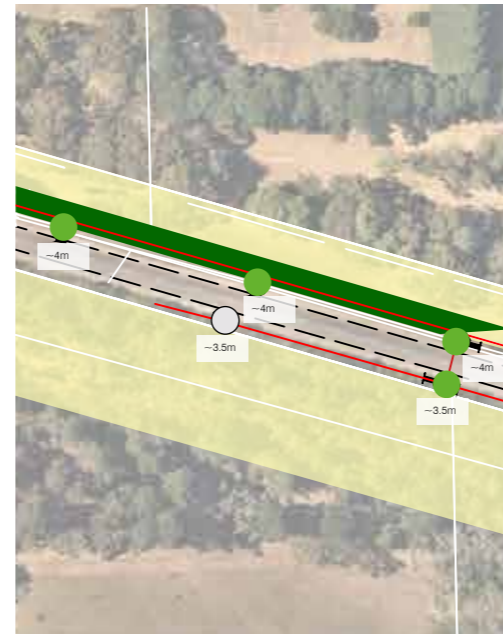
LOCATION 1



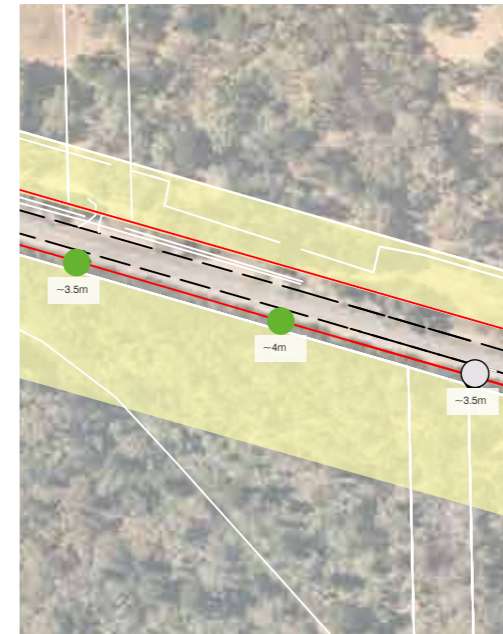
LOCATION 2



LOCATION 3



LOCATION 4



**This copied document to be made available for the sole purpose of enabling its consideration and review as part of a planning process under the Planning and Environment Act 1987. The document must not be used for any purpose which may breach any copyright**

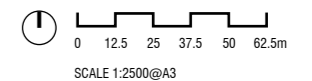
## POWER POLE SITING PLAN

Connection to energy generation facility at 1 Long Island Drive, Hastings

DRG NO.  
309457 ID 01

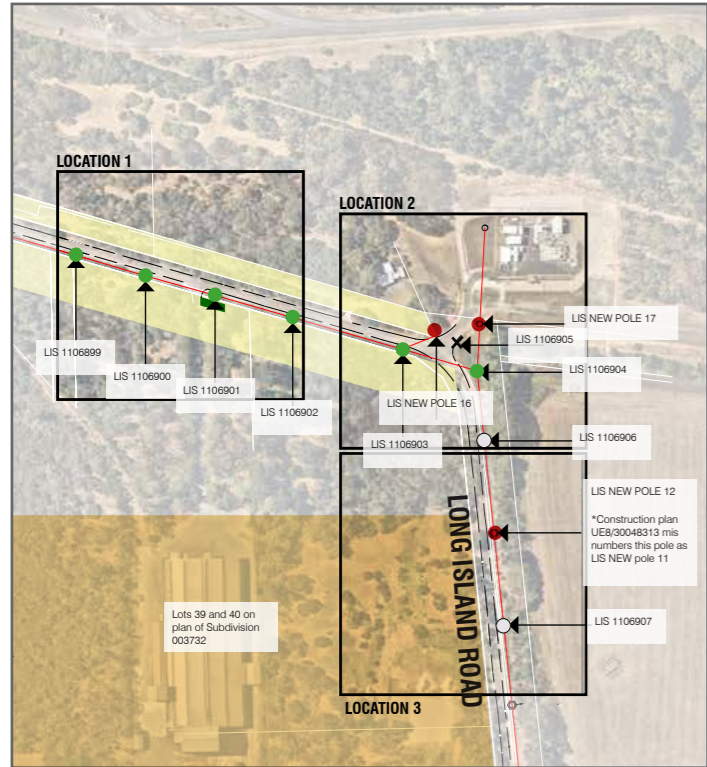
REV  
01

DATE  
12/04/2022



# POWER POLE SITING PLAN

This copied document to be made available for the sole purpose of enabling its consideration and review as part of a planning process under the Planning and Environment Act 1987. The document must not be used for any purpose which may breach any copyright



## LIMITATION OF PLAN

- ▶ New poles will be made of wood materials.
- ▶ Layout is based on United Energy Drawings 3000483 sheets 0-4. Aerial imagery is sourced from nearmap and is approximate in location.
- ▶ Distance from road has been traced from nearmap and is approximate. Detail survey is required for exact dimensions.
- ▶ Distances have been calculated from the edge of road pavement to centre of pole.
- ▶ Data has been collated from <https://www.data.vic.gov.au/>.
- ▶ This plan has been based on MGA 1994 Zone 55.
- ▶ All new and replacement poles shown on this plan will be 12m above ground, with the exception of pole LIS 17 which will be 8m above ground and pole LIS 16 which will be 11m above ground.

## LEGEND

- Property boundaries
- Edge of road pavement
- Existing poles (no change)
- Replacement poles
- New poles
- Vegetation removal or pruning - approximate location. Refer to Biodiversity and Arborist Reports for details.
- Public Acquisition Overlay (PAO)
- Overhead Powerline
- LIS 1106874 Pole Reference Number
- 5.5m Offset from road
- Subject site boundary
- ✕ Pole Removal

ADVERTISED PLAN

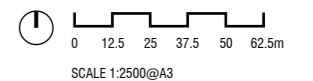
LOCATION 1



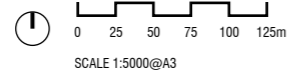
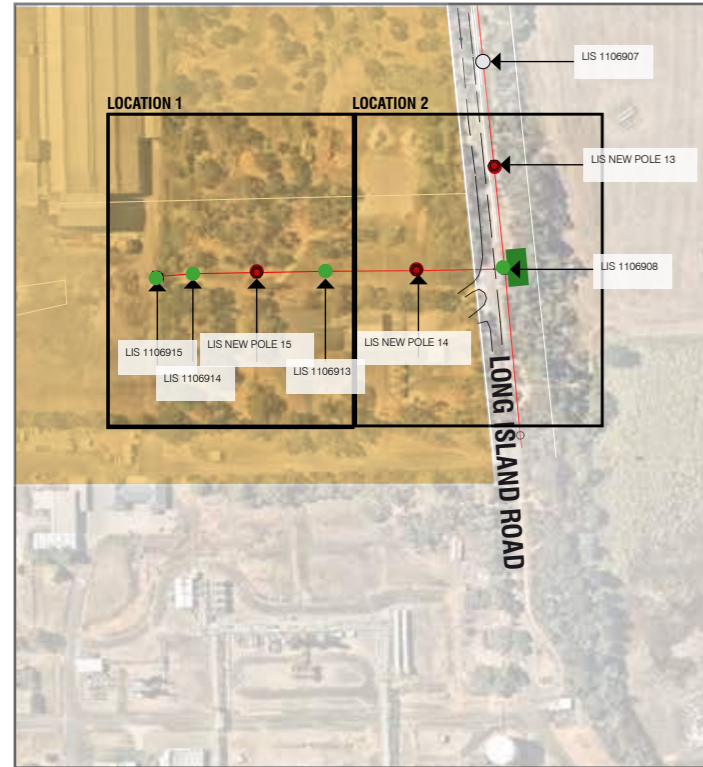
LOCATION 2



LOCATION 3



# POWER POLE SITING PLAN



## LIMITATION OF PLAN

- ▶ New poles will be made of wood materials.
- ▶ Layout is based on United Energy Drawings 3000483 sheets 0-4. Aerial imagery is sourced from nearmap and is approximate in location.
- ▶ Distance from road has been traced from nearmap and is approximate. Detail survey is required for exact dimensions.
- ▶ Distances have been calculated from the edge of road pavement to centre of pole.
- ▶ Data has been collated from <https://www.data.vic.gov.au/>.
- ▶ This plan has been based on MGA 1994 Zone 55.
- ▶ All new and replacement poles shown on this plan will be 12m above ground.

## LEGEND

- Property boundaries
- Edge of road pavement
- Existing poles (no change)
- Replacement poles
- New poles
- Vegetation removal or pruning - approximate location. Refer to Biodiversity and Arborist Reports for details.
- Public Acquisition Overlay (PAO)
- Overhead Powerline
- LIS 1106874 Pole Reference Number
- 5.5m Offset from road
- Subject site boundary

**ADVERTISED  
PLAN**

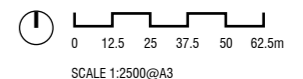
## LOCATION 1



## LOCATION 2



**This copied document to be made available for the sole purpose of enabling its consideration and review as part of a planning process under the Planning and Environment Act 1987. The document must not be used for any purpose which may breach any copyright**



## POWER POLE SITING PLAN

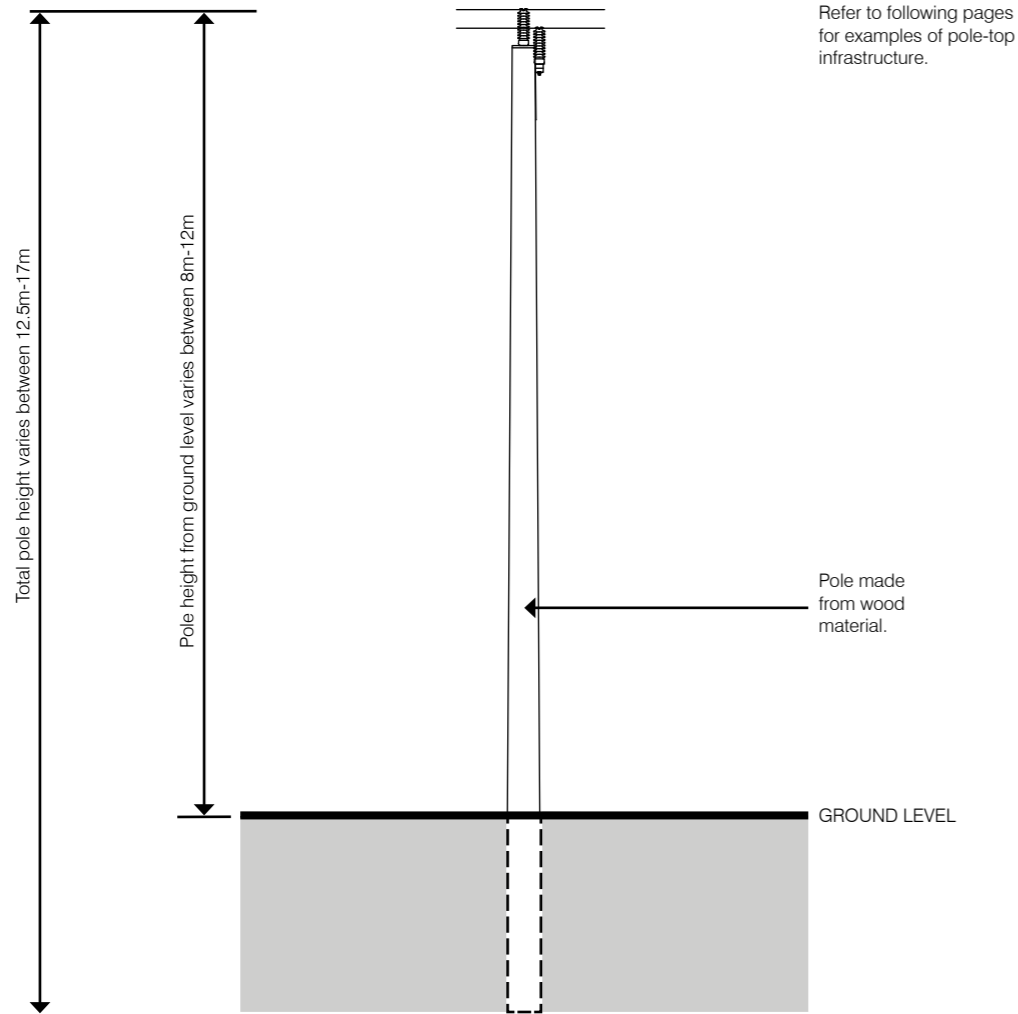
Connection to energy generation facility at 1 Long Island Drive, Hastings

DRG NO.  
309457 ID 01

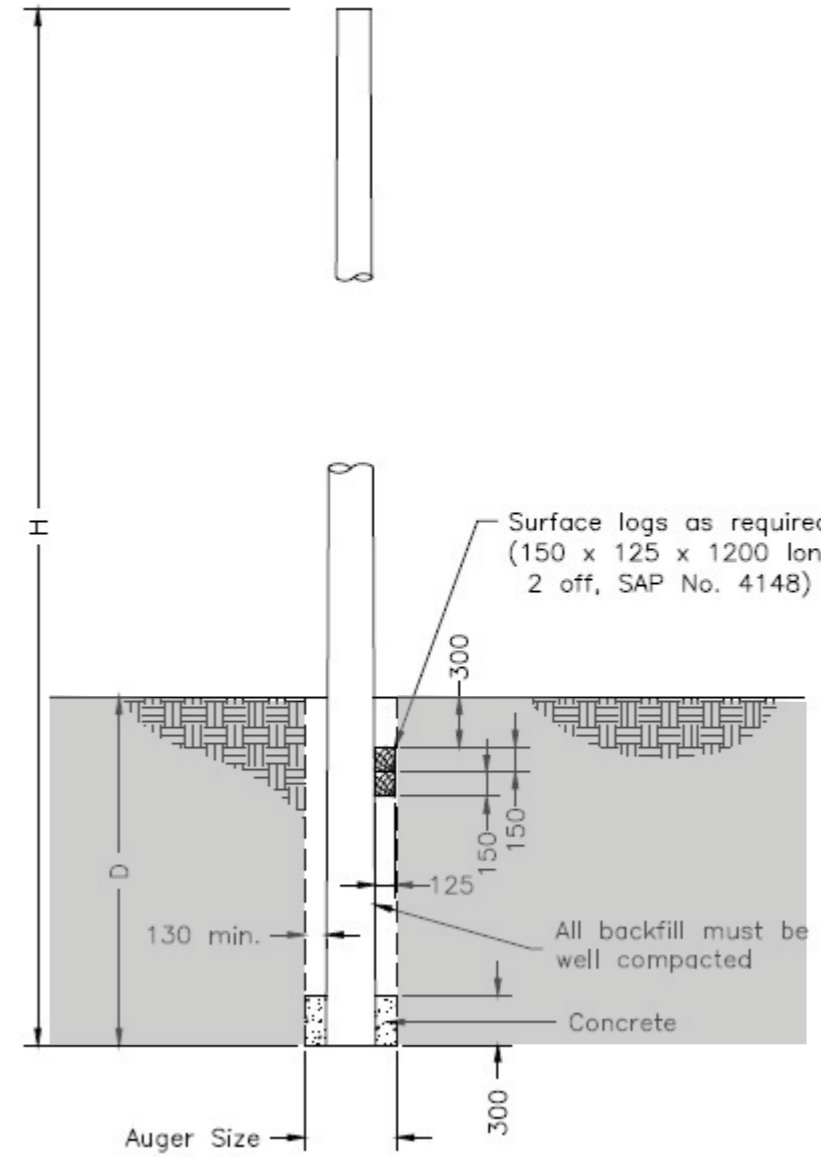
REV  
01

DATE  
12/04/2022

This copied document to be made available for the sole purpose of enabling its consideration and review as part of a planning process under the Planning and Environment Act 1987. The document must not be used for any purpose which may breach any copyright

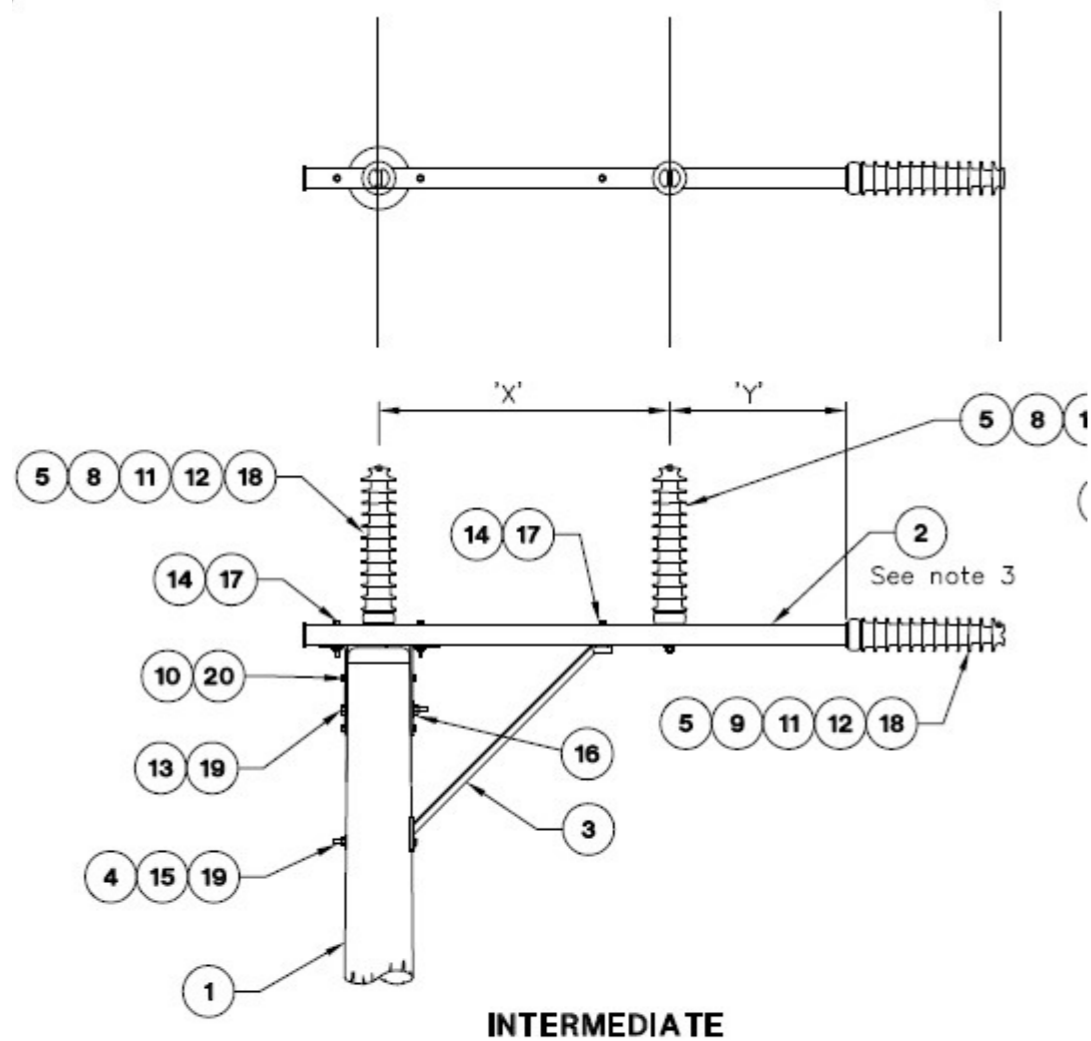


DESIGN DETAIL 1 - Pole Elevation  
12m above ground level unless otherwise stated



DESIGN DETAIL 2 - Example of pole-top infrastructure/hardware

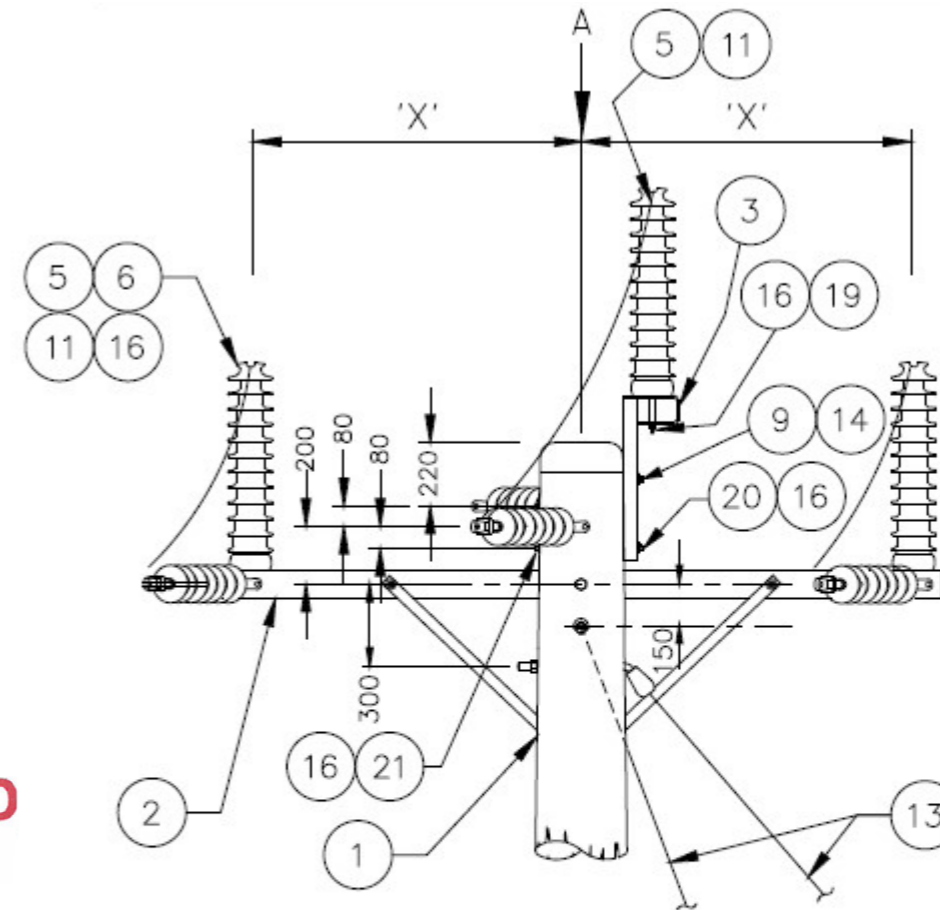
ADVERTISED PLAN



**INTERMEDIATE**

Crossarm	'X'	'Y'
US24	1700	1150

**ADVERTISED PLAN**



**NOTES:**

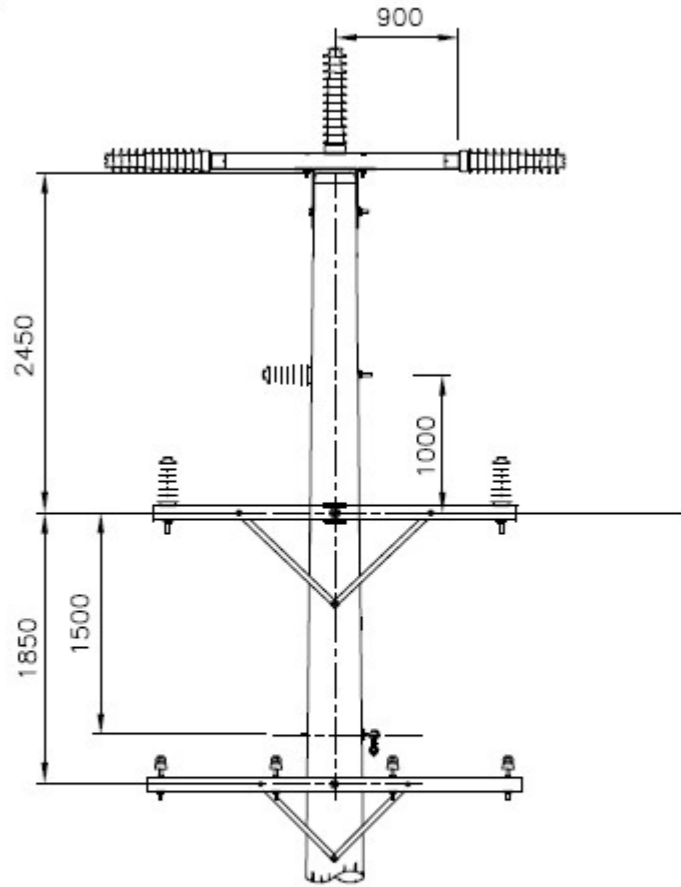
1. Horizontal bridging of outside phases using post insulators may be used if crossarm has this facility.
2. When aerial stay is required, bridge over crossarm post insulator.
3. Minimum permissible clearances at the structure are maintained up to deviations listed in the above table. For greater angles use anchor construction.

DIMENSION 'X'	MAX. ANGLE OF DEVIATION
1200	60°
1500	60°
1800	60°

DESIGN DETAIL 3 - Example of pole-top infrastructure/hardware

DESIGN DETAIL 4- Example of pole-top infrastructure/hardware

This copied document to be made available for the sole purpose of enabling its consideration and review as part of a planning process under the Planning and Environment Act 1987. The document must not be used for any purpose which may breach any copyright

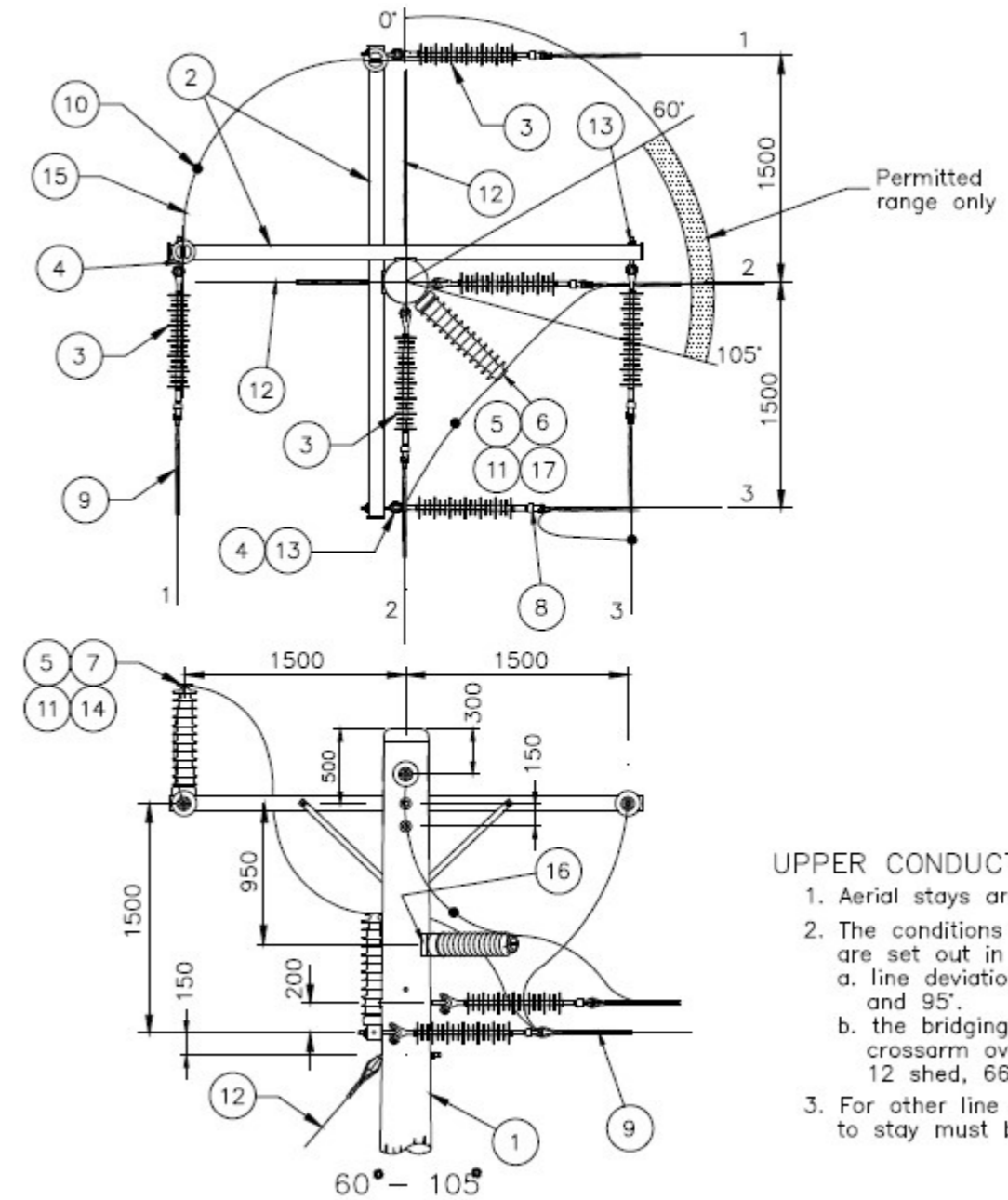


66kV Construction - Section 1.1

22kV Subsidiary Construction - Section 1.2

LV Construction - Section 1.3)

### ADVERTISED PLAN



#### UPPER CONDUCT

1. Aerial stays are
2. The conditions are set out in
  - a. line deviation and 95°.
  - b. the bridging crossarm over 12 shed, 66k
3. For other line c to stay must be

DESIGN DETAIL 5 - Example of pole-top infrastructure/hardware

DESIGN DETAIL 6 - Example of pole-top infrastructure/hardware

This copied document to be made available for the sole purpose of enabling its consideration and review as part of a planning process under the Planning and Environment Act 1987. The document must not be used for any purpose which may breach any copyright