

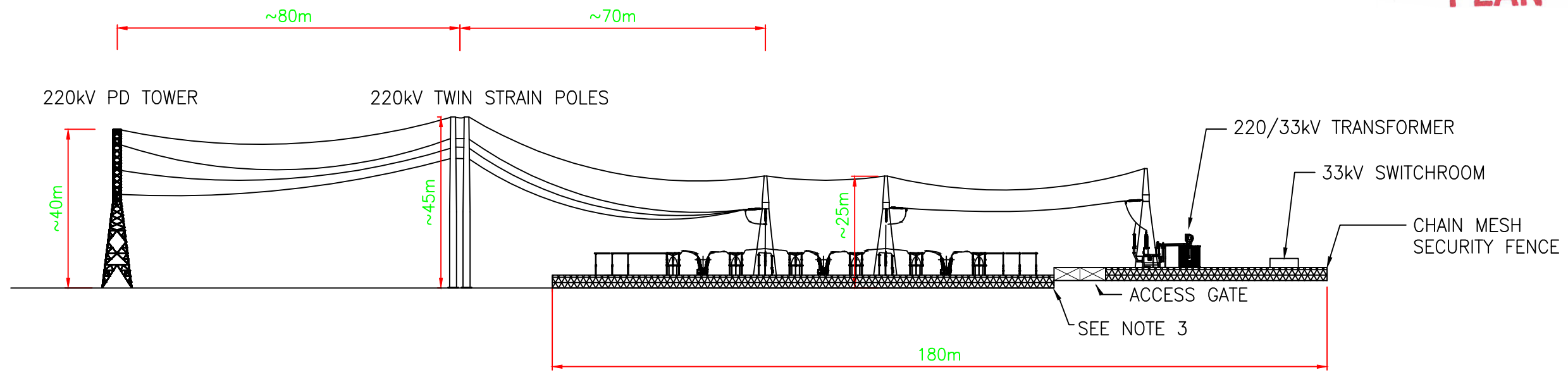
Delburn Terminal Station Mapbook

**ADVERTISED
PLAN**

This copied document to be made available for the sole purpose of enabling its consideration and review as part of a planning process under the Planning and Environment Act 1987. The document must not be used for any purpose which may breach any copyright

This copied document to be made available for the sole purpose of enabling its consideration and review as part of a planning process under the Planning and Environment Act 1987. The document must not be used for any purpose which may breach any copyright

ADVERTISED PLAN



NORTH-EAST ELEVATION

NOTES:

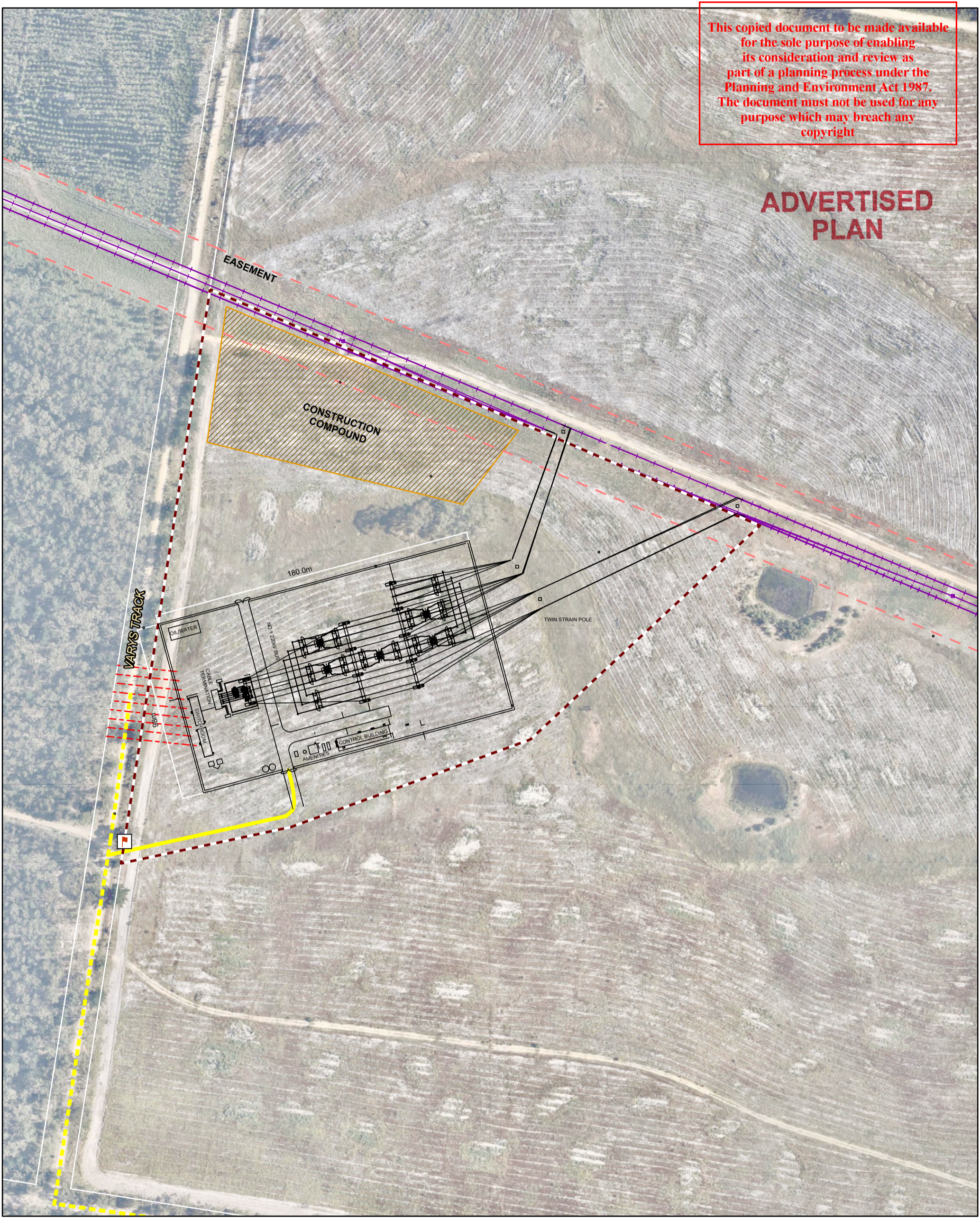
1. THIS DRAWING IS PROVIDED FOR PLANNING PURPOSES ONLY AND THIS INFORMATION SHOULD NOT BE RELIED UPON FOR DESIGN OR CONSTRUCTION.
2. DRAWING IS NOT TO SCALE.
3. TERMINAL STATION BENCH CONSISTS OF TWO LEVELS.
4. SITE TOPOGRAPHY OUTSIDE OF THE TERMINAL STATION IS NOT A TRUE REPRESENTATION OF SITE CONDITIONS. LOCAL GRADING AROUND 220KV LINES STRUCTURES EXPECTED.

REFERENCE DRAWINGS		REVISION				DELBURN WIND FARM PROJECT OPTION 2 - DOUBLE CIRCUIT CUT-IN SECTION VIEW				
DRAWING TITLE	DRAWING No.	DATE	REV	DESCRIPTION	BY	CONTRACTOR	ISSUED	ENDORSED DATE ENDORSED REV 1 Spec No. Order No. Contractors No.	AusNet services No SKT-DELBURN-SEC-OP2	1

400 X 566mm
A2

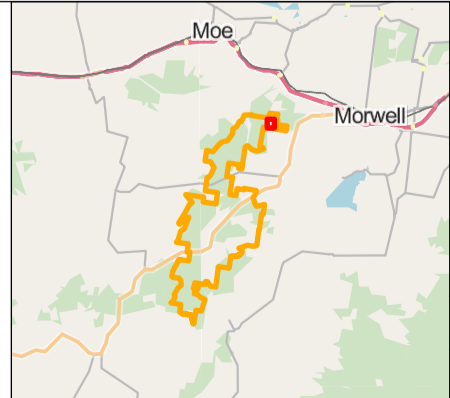
This copied document to be made available for the sole purpose of enabling its consideration and review as part of a planning process under the Planning and Environment Act 1987. The document must not be used for any purpose which may breach any copyright

ADVERTISED PLAN



Disclaimer:
OSMI Australia Pty Ltd makes no warranty in relation to the accuracy, reliability, completeness or suitability of the data and does not accept liability for any loss, damage or costs, including consequential damage, in relation to any use of the data in this map.
© OSMI Australia Pty Ltd

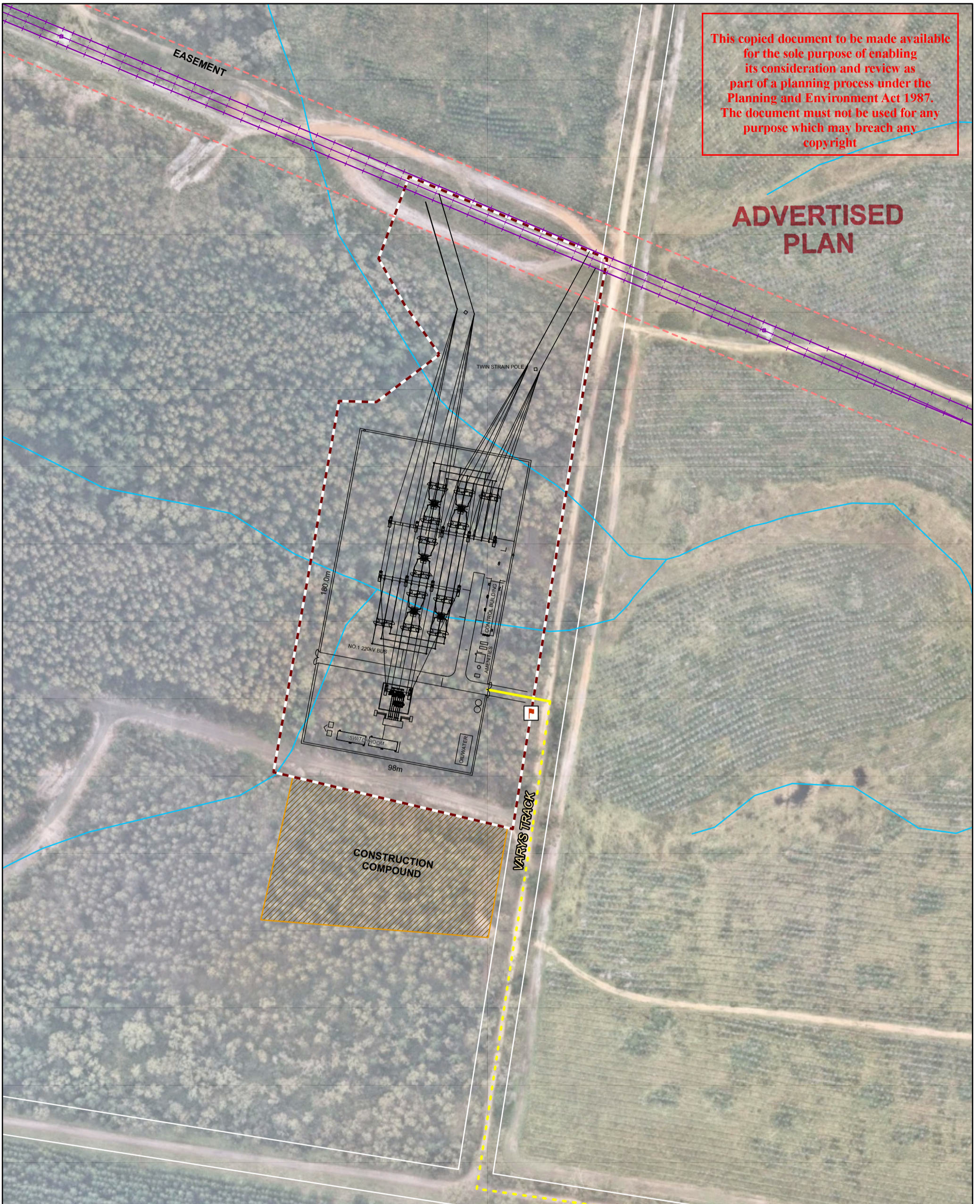
- Proposed Future Subdivision
- Terminal Station Layout Option A(2)
- Transmission Access Track Upgrade
- Terminal Station Access
- Construction Compound
- Existing Easement
- Underground Electrical Reticulation
- Existing 220kV Powerline
- Business identification signage location



PROJECT Delburn Wind Farm	
TITLE Terminal Station Option A(2)	
• DATE 28/06/2021	• PRODUCED I.Mackey
• SCALE 1:2,000 @ A3	• CHECKED I.Mackey
• STATUS Draft	• APPROVED P.Marriott
0 25 50 100 Metres	
• DRAWING No. DWF_OVR_027A_04B TSA2	• REV 04B

This copied document to be made available for the sole purpose of enabling its consideration and review as part of a planning process under the Planning and Environment Act 1987. The document must not be used for any purpose which may breach any copyright

ADVERTISED PLAN

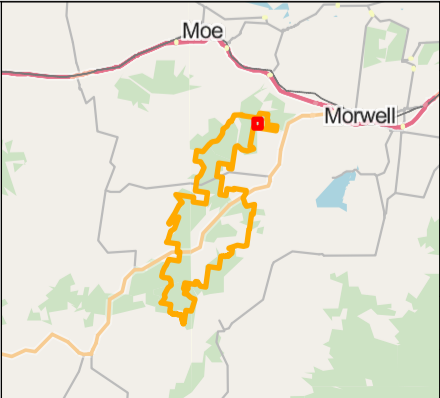


delburn
WIND FARM

Disclaimer:
OSMI Australia Pty Ltd makes no warranty in relation to the accuracy, reliability, completeness or suitability of the data and does not accept liability for any loss, damage or costs, including consequential damage, in relation to any use of the data in this map.

© OSMI Australia Pty Ltd

- Terminal Station Works Area
- Construction Compound
- Terminal Station Layout B(2)
- Terminal Station Access
- Transmission Access Track Upgrade
- Existing 220kV Powerline
- Existing Easement
- Watercourse
- Business identification signage location

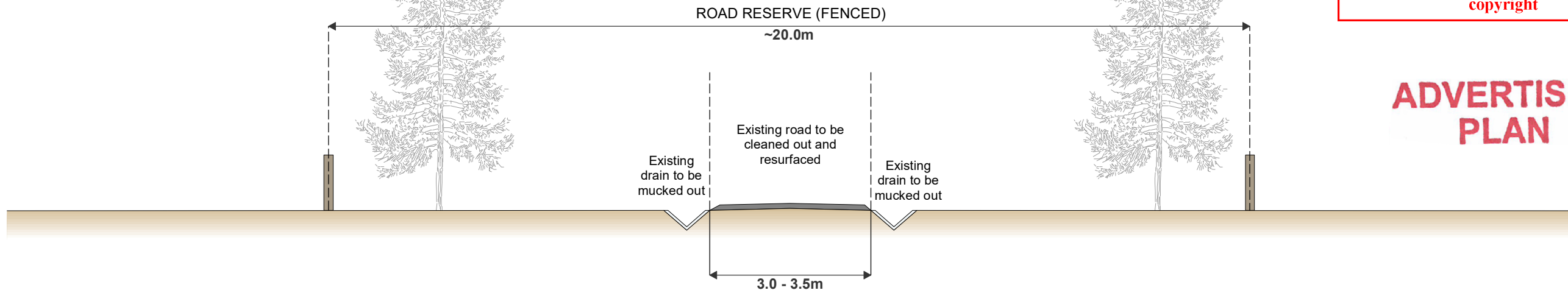


PROJECT		Delburn Wind Farm	
TITLE		Terminal Station Option B(2)	
DATE	28/06/2021	PRODUCED	A.Curtis
SCALE	1:2,000 @ A3	CHECKED	I.Mackey
STATUS	Draft	APPROVED	P.Marriott
DRAWING No.		DWF_OVR_027A_04B TSB2	
REV		04B	

0 25 50 100 Metres

N

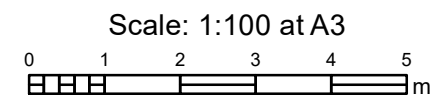
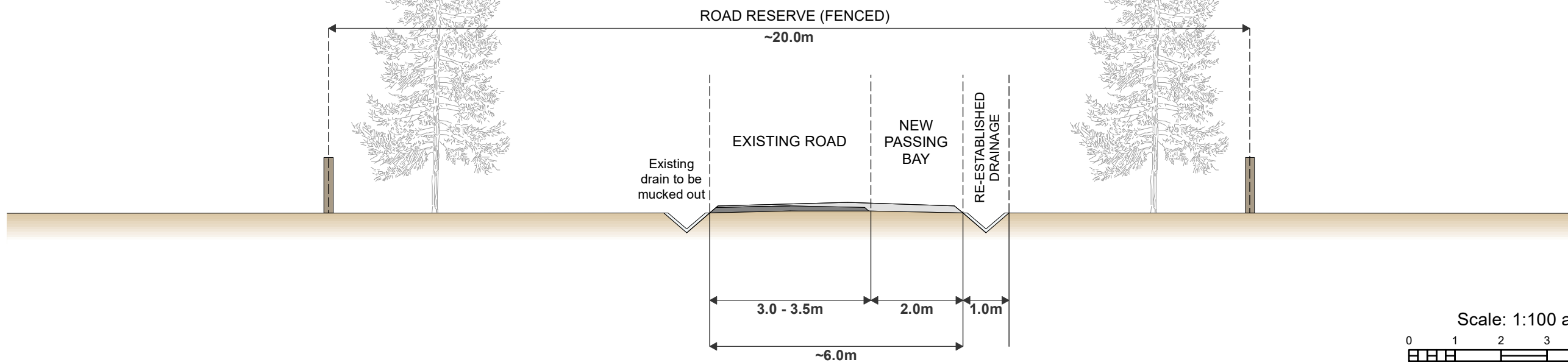
SCENARIO 1 PUBLIC ROAD UPGRADE



This copied document to be made available for the sole purpose of enabling its consideration and review as part of a planning process under the Planning and Environment Act 1987. The document must not be used for any purpose which may breach any copyright

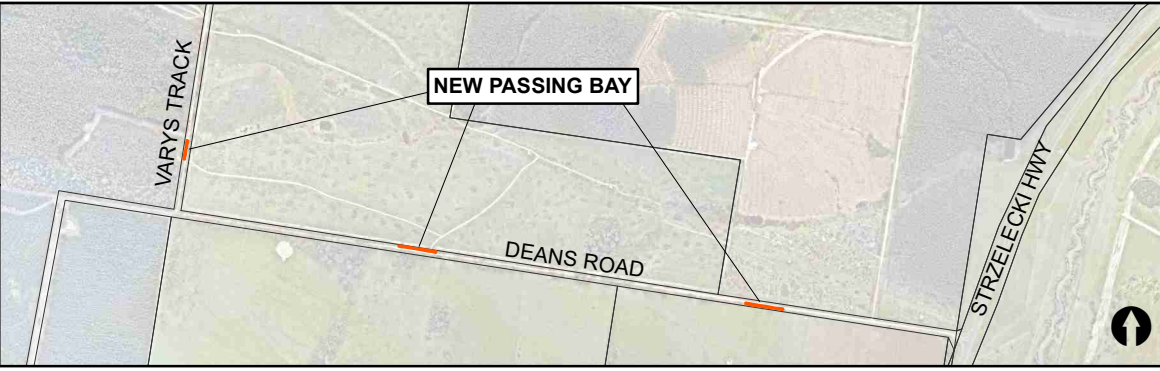
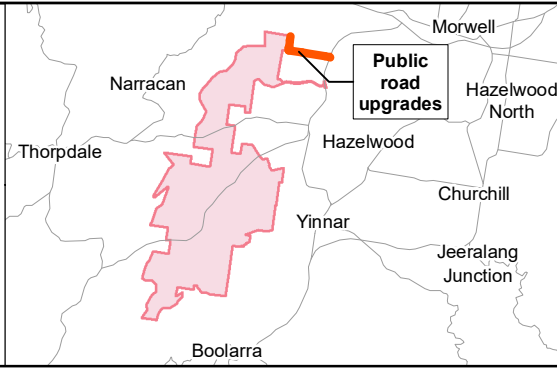
ADVERTISED
PLAN

SCENARIO 2 PUBLIC ROAD UPGRADE & WIDENING

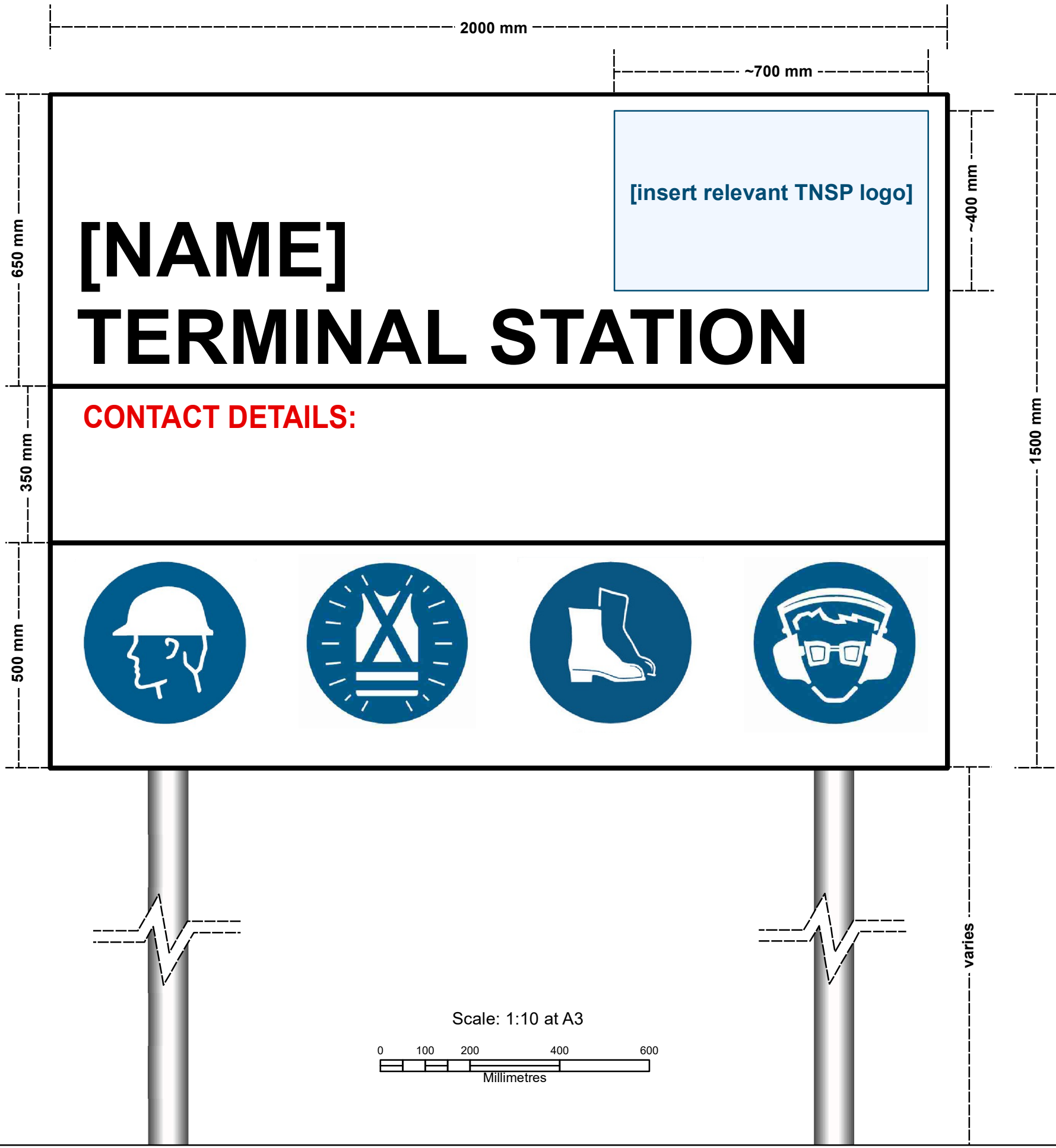


Disclaimer:
OSMI Australia Pty Ltd makes no warranty in relation to the accuracy, reliability, completeness or suitability of the data and does not accept liability for any loss, damage or costs, including consequential damage, in relation to any use of the data in this map.

© OSMI Australia Pty Ltd



Delburn Wind Farm	
DEANS ROAD & VARYS TRACK UPGRADE SCENARIOS	
• PROJECT	
• DATE	3/02/2021
• CHECKED	I.Mackey
• STATUS	Draft
• PRODUCED	A.Curtis
• APPROVED	P.Marriott
• REV	A



• PROJECT	Delburn Wind Farm	
• TITLE	TYPICAL BUSINESS IDENTIFICATION SIGN	
• DATE	28/06/2021	• PRODUCED A.Curtis
• CHECKED	I.Mackey	• APPROVED P.Marriott
• STATUS	Draft	• REV B

NOTE: Refer to Terminal Station Option A plan and Terminal Station Option B plan for location of the sign

ADVERTISED PLAN

This copied document to be made available for the sole purpose of enabling its consideration and review as part of a planning process under the Planning and Environment Act 1987. The document must not be used for any purpose which may breach any copyright



Disclaimer:
OSMI Australia Pty Ltd makes no warranty in relation to the accuracy, reliability, completeness or suitability of the data and does not accept liability for any loss, damage or costs, including consequential damage, in relation to any use of the data in this map.