



PHOTO 1 - NORTHEAST CORNER OF SUBJECT SITE FACING SOUTHWEST FROM ARTIFICIAL GRASS



PHOTO 2 - NORTHEAST CORNER OF SUBJECT SITE FACING SOUTH FROM BITUMEN DRIVEWAY



PHOTO 3 - SOUTHERN ELEVATION OF MARY MACKILLOP BUILDING



PHOTO 4 - SOUTHEAST CORNER OF SUBJECT SITE FACING NORTH FROM CONCRETE DRIVEWAY

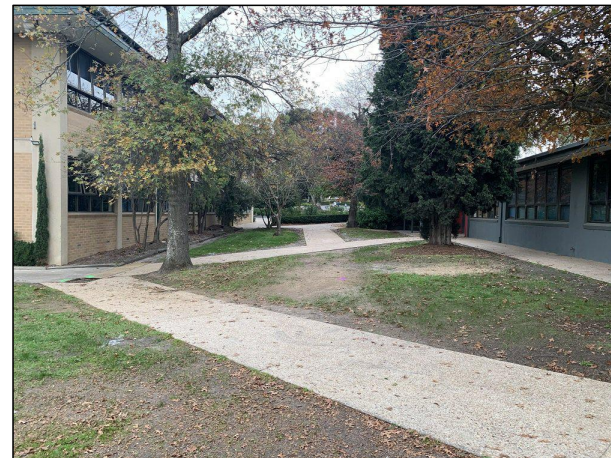


PHOTO 5 - SOUTHEAST CORNER OF SUBJECT SITE FACING WEST FROM GRASS



PHOTO 6 - SOUTHWEST CORNER OF JOHN ORMOND KENNEDY LIBRARY FACING NORTH FROM CONCRETE PATH

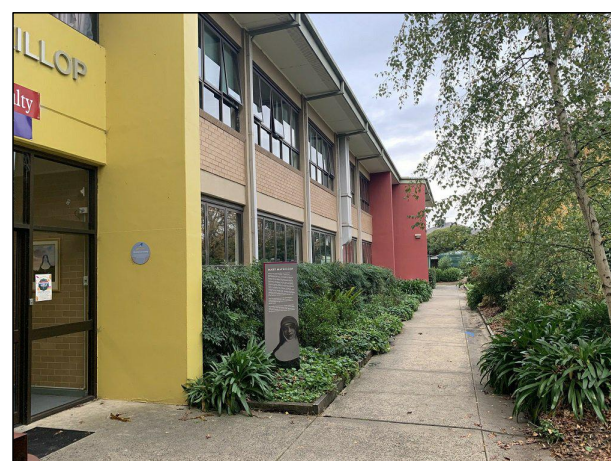
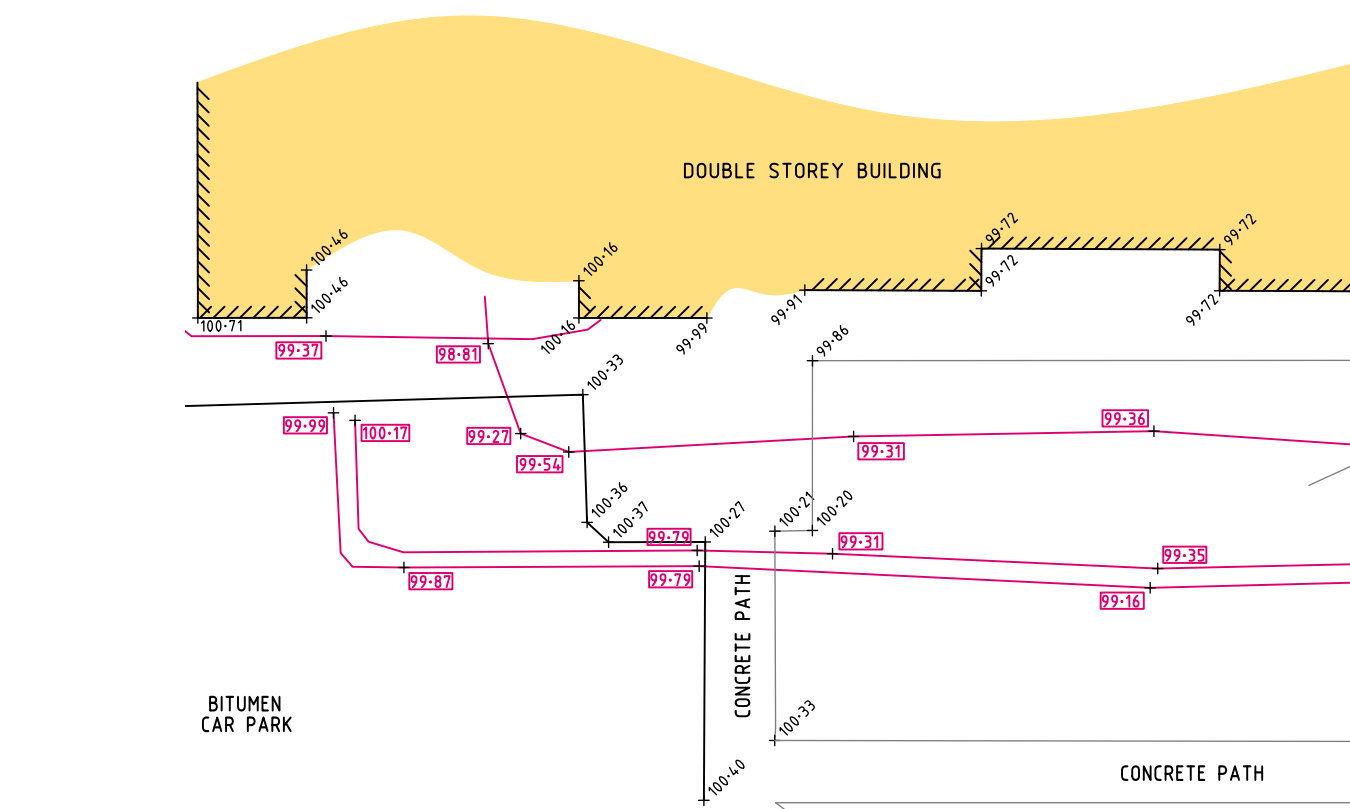
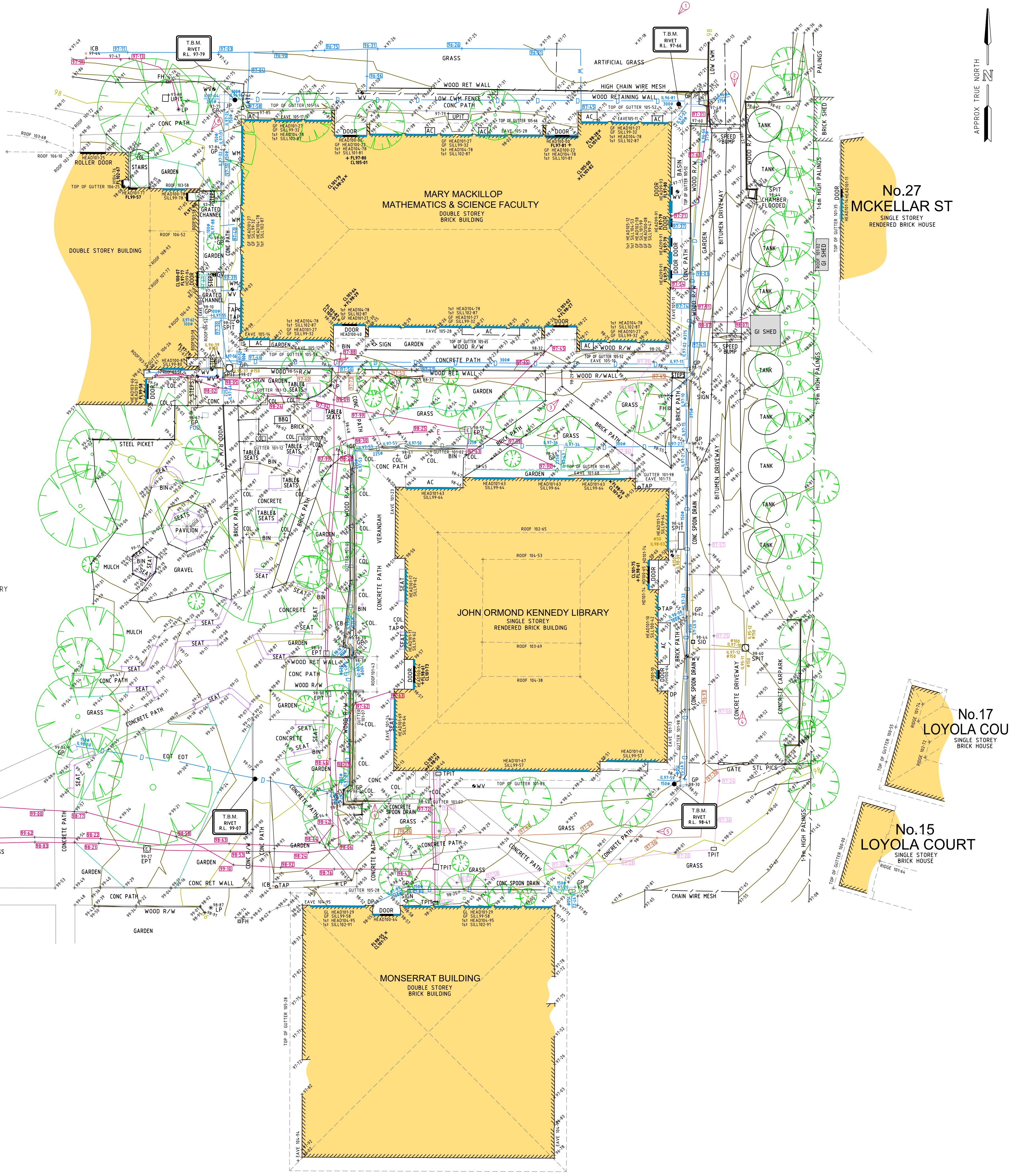


PHOTO 7 - SOUTHERN ELEVATION OF MARY MACKILLOP BUILDING



PHOTO 8 - NORTHWEST CORNER OF SUBJECT SITE FACING SOUTHWEST FROM CONCRETE PATH



APPROX TRUE NORTH

DETAILS

NOTATIONS

Levels are to Australian Height Datum as derived from previous survey by GOODISON SURVEYING, produced on 27/05/2019. Co-ordinate origin and bearing datum has also been derived from previous survey by GOODISON SURVEYING. Contour interval = 0.2m. This survey has located surface features in accordance with client instructions and would generally include visible utility services. Underground services have been plotted from marks placed by Asset Survey Solutions using electronic sensing and ground penetrating radar. Accurate location of services can only be guaranteed by excavation. Prior to any demolition, excavation or construction on the site the relevant Authorities should be contacted to ascertain the possible locations of further services and detailed location of all services. Trees are shown true to scale. Only significant trees are shown. Pits labelled CNO could not be opened. Pits labelled FOD are full of debris.

ADVERTISED PLAN

LEGEND

- TPIT TELECOMMUNICATIONS PIT
EPIT ELECTRICITY PIT
LP LIGHT POLE
WM WATER METER
FH FIRE HYDRANT
WV WATER STOP VALVE
WT WATER TAP
ICB IRRIGATION CONTROL BOX
GP DRAINAGE GRATED PIT
JP DRAINAGE JUNCTION PIT
SPIT SEWER PIT
SIS SEWER INSPECTION SHAFT
GV GAS VALVE
UTUN UNKNOWN UTILITY
UPIT UNCLASSIFIED PIT
PHOTO POINT & DIRECTION
IL 83-06 UNDERGROUND DRAIN WITH INVERT LEVEL & PIPE SIZE
OH OVERHEAD ELECTRICITY LINE
E UNDERGROUND ELECTRICITY LINE
T UNDERGROUND TELECOM LINE
G UNDERGROUND GAS LINE
S UNDERGROUND SEWER
W UNDERGROUND WATER LINE
U UNDERGROUND UNCLASSIFIED
[83-1] DENOTES REDUCED LEVEL OF ELECTRICITY SERVICE AS DETERMINED BY SERVICE LOCATOR
[83-1] DENOTES REDUCED LEVEL OF TELECOM SERVICES AS DETERMINED BY SERVICE LOCATOR
[83-1] DENOTES REDUCED LEVEL OF GAS SERVICES AS DETERMINED BY SERVICE LOCATOR
[83-1] DENOTES REDUCED LEVEL OF SEWER SERVICES AS DETERMINED BY SERVICE LOCATOR
[83-1] DENOTES REDUCED LEVEL OF UNCLASSIFIED SERVICES AS DETERMINED BY SERVICE LOCATOR
[83-1] DENOTES REDUCED LEVEL OF WATER SERVICES AS DETERMINED BY SERVICE LOCATOR

CLIENT: CLARKE HOPKINS CLARKE
DETAILS: FEATURE & LEVEL SURVEY
PROJECT: LOYOLA COLLEGE
325 GRIMSHAW STREET
WATSONIA 3087

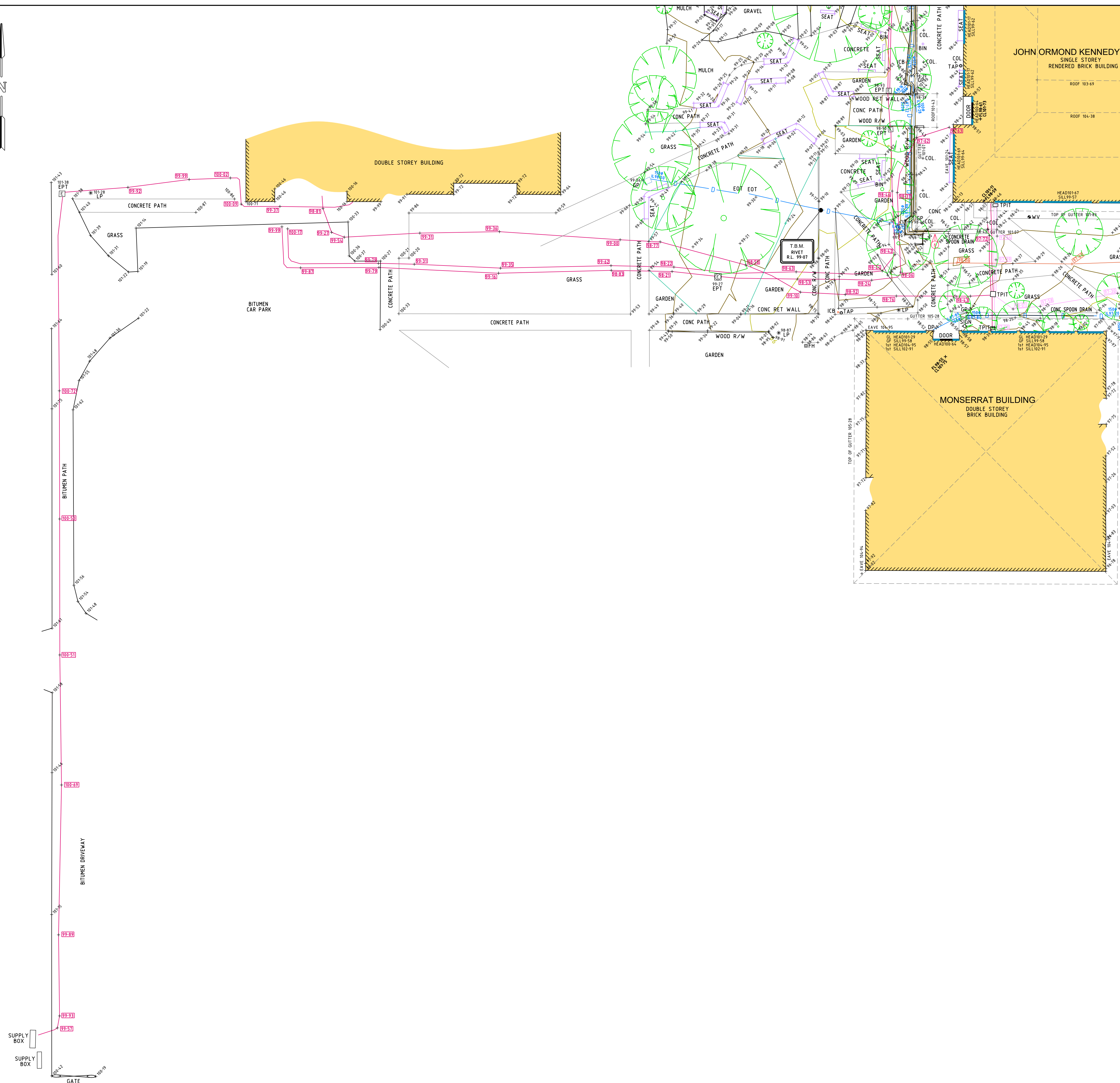
Beveridge Williams development & environment consultants
Melbourne ph : 03 9524 8888
www.beveridgewilliams.com.au

SURVEYORS REF. 2200814
VERSION A
MAY 2022
SHEET 1 OF 2
ORIGINAL SCALE 1:250 SHEET SIZE A1
LENGTHS ARE IN METRES

SURVEYOR: B.W. CHECKED: A.B. MELWAYS REF: 20 D2
DRAWN: K.G.

Table with columns: VER, BY, AMENDMENTS, DATE. Rows C, D, E, F, G.

APPROX TRUE NORTH



DETAILS

NOTATIONS

Levels are to Australian Height Datum as derived from previous survey by GOODISON SURVEYING, produced on 27/05/2019.
 Co-ordinate origin and bearing datum has also been derived from previous survey by GOODISON SURVEYING.
 Contour Interval = 0.2m
 This survey has located surface features in accordance with client instructions and would generally include visible utility services. Underground services have been plotted from marks placed by Asset Survey Solutions, using electronic sensing and ground penetrating radar. Accurate location of services can only be guaranteed by excavation. Prior to any demolition, excavation or construction on the site the relevant Authorities should be contacted to ascertain the possible locations of further services and detailed location of all services.
 Trees are shown true to scale. Only significant trees are shown.
 Pits labelled CND could not be opened.
 Pits labelled FOD are full of debris.

ADVERTISED PLAN

LEGEND

- TREE
- TPIT TELECOMMUNICATIONS PIT
- EPIT ELECTRICITY PIT
- LP LIGHT POLE
- WM WATER METER
- FH FIRE HYDRANT
- WV WATER STOP VALVE
- TAP WATER TAP
- ICB IRRIGATION CONTROL BOX
- GP DRAINAGE GRATED PIT
- JP DRAINAGE JUNCTION PIT
- SPIT SEWER PIT
- SIO SEWER INSPECTION SHAFT
- GV GAS VALVE
- UTUN UNKNOWN UTILITY
- UPIT UNCLASSIFIED PIT
- PHOTO POINT & DIRECTION
- IL 83-06 UNDERGROUND DRAIN WITH INVERT LEVEL & PIPE SIZE
- OH OVERHEAD ELECTRICITY LINE
- E UNDERGROUND ELECTRICITY LINE
- T UNDERGROUND TELECOM LINE
- G UNDERGROUND GAS LINE
- S UNDERGROUND SEWER
- W UNDERGROUND WATER LINE
- U UNDERGROUND UNCLASSIFIED
- E83-1 DENOTES REDUCED LEVEL OF ELECTRICITY SERVICE AS DETERMINED BY SERVICE LOCATOR
- T83-1 DENOTES REDUCED LEVEL OF TELECOM SERVICES AS DETERMINED BY SERVICE LOCATOR
- G83-1 DENOTES REDUCED LEVEL OF GAS SERVICES AS DETERMINED BY SERVICE LOCATOR
- S83-1 DENOTES REDUCED LEVEL OF SEWER SERVICES AS DETERMINED BY SERVICE LOCATOR
- U83-1 DENOTES REDUCED LEVEL OF UNCLASSIFIED SERVICES AS DETERMINED BY SERVICE LOCATOR
- W83-1 DENOTES REDUCED LEVEL OF WATER SERVICES AS DETERMINED BY SERVICE LOCATOR

CLIENT: CLARKE HOPKINS CLARKE

DETAILS: FEATURE & LEVEL SURVEY

PROJECT:
 LOYOLA COLLEGE
 325 GRIMSHAW STREET
 WATSONIA 3087

BW Beveridge Williams
 development & environment consultants
 Melbourne ph : 03 9524 8888
www.beveridgewilliams.com.au

SURVEYORS REF.
2200814
 VERSION A
 MAY 2022
 SHEET 2 OF 2

ORIGINAL SCALE 1:250 SHEET SIZE A1

 LENGTHS ARE IN METRES

SURVEYOR: B.W. CHECKED: A.B. MELWAYS REF: 20 D2
 DRAWN: K.G.

CAD REFERENCE: K:\JOBS\DATA\A\2200814-FL.dwg

VER	BY	AMENDMENTS	DATE
B			
C			
D			
E			
F			
G			