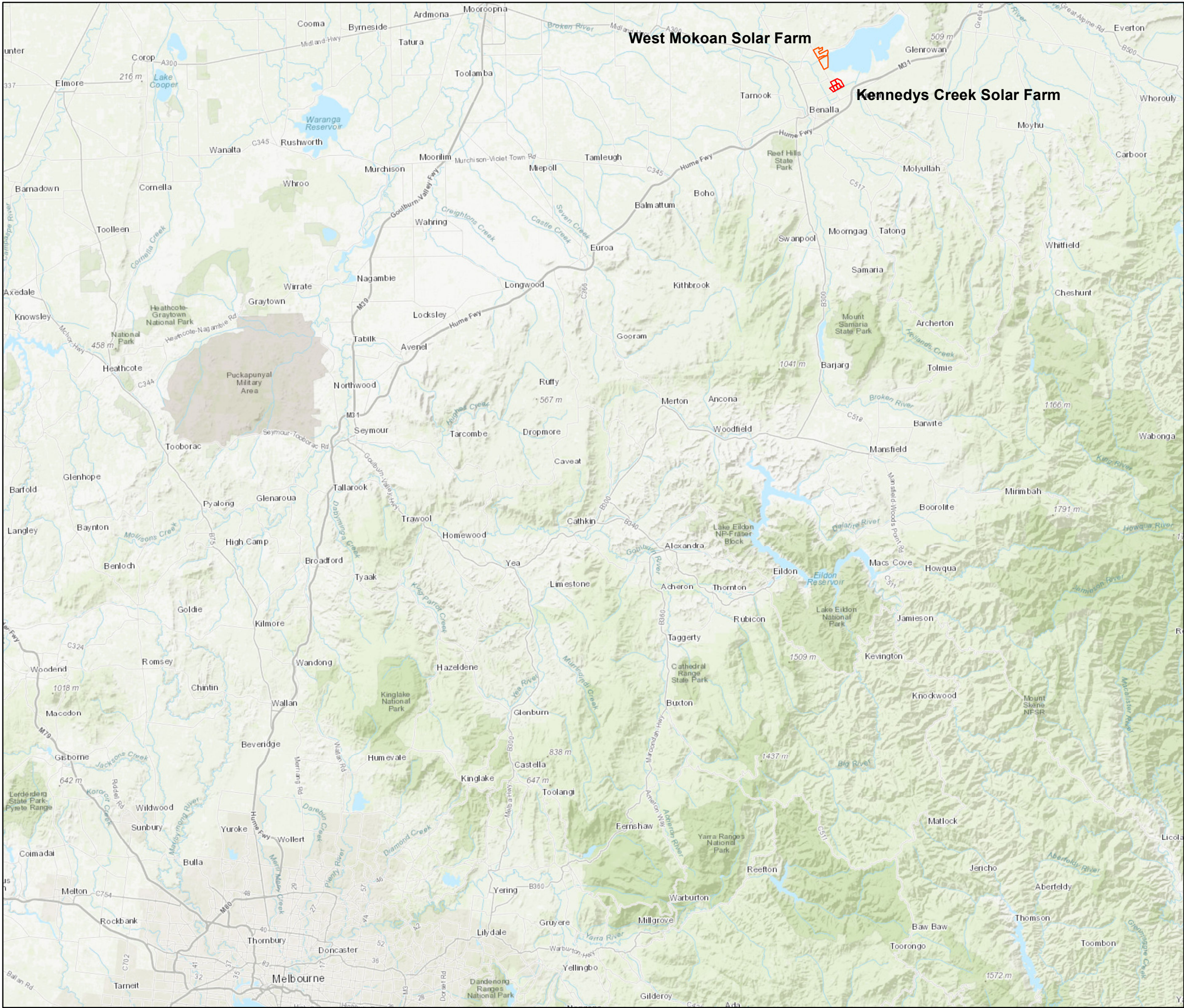


AECOM does not warrant the accuracy or completeness of information displayed in this map and any person using it does so at their own risk. AECOM shall bear no responsibility or liability for any errors, faults, defects, or omissions in the information.





AECOM



0 10 20 Km

WEST MOKOAN SOLAR FARM
PROJECT
KENNEDYS CREEK AMENDMENT
LOCATION PLAN

Legend

-  Kennedys Creek Solar Farm Site Boundary
-  West Mokoan Solar Farm Site Boundary

ADVERTISED PLAN



Service Layer Credits: Sources: Esri, HERE, Garmin, Intermap, increment P Corp., GEBCO, USGS, FAO, NPS, NRCAN, GeoBase, IGN, Kadaster NL, Ordnance Survey, Esri Japan, METI, Esri China (Hong

Copyright: Copyright in material relating to the base layers (contextual information) on this page is licensed under a Creative Commons, Attribution 3.0 Australia licence © Department of Finance, Services & Innovation 2017, (Digital Cadastral Database and/or Digital Topographic Database).

The terms of Creative Commons Attribution 3.0 Australia License are available from <https://creativecommons.org/licenses/by/3.0/au/legalcode> (Copyright Licence)

Neither AECOM Australia Pty Ltd (AECOM) nor the Department of Finance, Services & Innovation make any representations or warranties of any kind, about the accuracy, reliability, completeness or suitability or fitness for purpose in relation to the content (in accordance with clause 5 of the Copyright Licence). AECOM has prepared this document for the sole use of its Client based on the Client's description of its requirements having regard to the assumptions and other limitations set out.

AECOM does not warrant the accuracy or completeness of information displayed in this map and any person using it does so at their own risk. AECOM shall bear no responsibility or liability for any errors, faults, defects, or omissions in the information.



AECOM



**WEST MOKOAN SOLAR FARM
PROJECT
KENNEDYS CREEK AMENDMENT
OVERVIEW PLAN**

Legend

- Kennedys Creek Solar Farm Site Boundary
- West Mokoan Solar Farm Site Boundary
- Transmission Line Investigation Area
- Indicative Transmission Line Easement
- Indicative Substation Locations
- Indicative Transmission Line Centreline
- Indicative Transmission Line Pole Locations

ADVERTISED PLAN



Service Layer Credits: Source: Esri, Maxar, GeoEye, Earthstar Geographics, CNES/Airbus DS, USDA, USGS, AeroGRID, IGN, and the GIS User Community

Copyright: Copyright in material relating to the base layers (contextual information) on this page is licensed under a Creative Commons, Attribution 3.0 Australia licence © Department of Finance, Services & Innovation 2017, (Digital Cadastral Database and/or Digital Topographic Database).

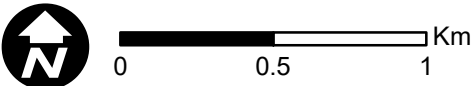
The terms of Creative Commons Attribution 3.0 Australia License are available from <https://creativecommons.org/licenses/by/3.0/au/legalcode> (Copyright Licence)

Neither AECOM Australia Pty Ltd (AECOM) nor the Department of Finance, Services & Innovation make any representations or warranties of any kind, about the accuracy, reliability, completeness or suitability or fitness for purpose in relation to the content (in accordance with clause 5 of the Copyright Licence). AECOM has prepared this document for the sole use of its Client based on the Client's description of its requirements having regard to the assumptions and other limitations set out.

AECOM does not warrant the accuracy or completeness of information displayed in this map and any person using it does so at their own risk. AECOM shall bear no responsibility or liability for any errors, faults, defects, or omissions in the information.



AECOM

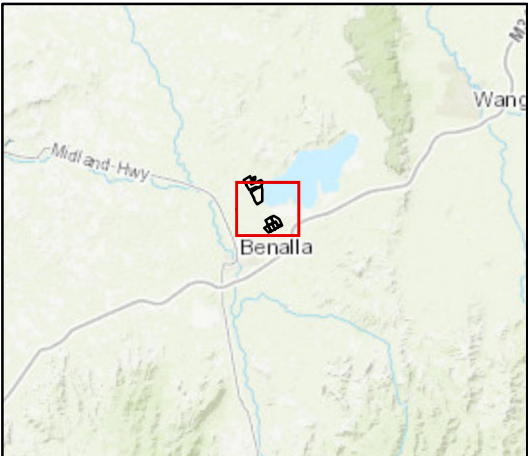


**WEST MOKOAN SOLAR FARM
PROJECT
KENNEDYS CREEK AMENDMENT**

LEGEND

- Indicative Transmission Line Pole Locations
- Indicative Transmission Line Centreline
- Indicative Transmission Line Easement
- Transmission Line Investigation Area
- Substation Locations
- Kennedys Creek Solar Farm Site Boundary
- West Mokoan Solar Farm Site Boundary
- Property Boundaries

ADVERTISED PLAN



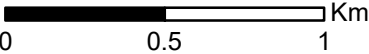
Service Layer Credits: Source: Esri, Maxar, GeoEye, Earthstar Geographics, CNES/Airbus DS, USDA, USGS, AeroGRID, IGN, and the GIS User Community

Copyright: Copyright in material relating to the base layers (contextual information) on this page is licensed under a Creative Commons, Attribution 3.0 Australia licence © Department of Finance, Services & Innovation 2017, (Digital Cadastral Database and/or Digital Topographic Database).

The terms of Creative Commons Attribution 3.0 Australia License are available from <https://creativecommons.org/licenses/by/3.0/au/legalcode> (Copyright Licence)

Neither AECOM Australia Pty Ltd (AECOM) nor the Department of Finance, Services & Innovation make any representations or warranties of any kind, about the accuracy, reliability, completeness or suitability or fitness for purpose in relation to the content (in accordance with clause 5 of the Copyright Licence). AECOM has prepared this document for the sole use of its Client based on the Client's description of its requirements having regard to the assumptions and other limitations set out.

ADVERTISED PLAN



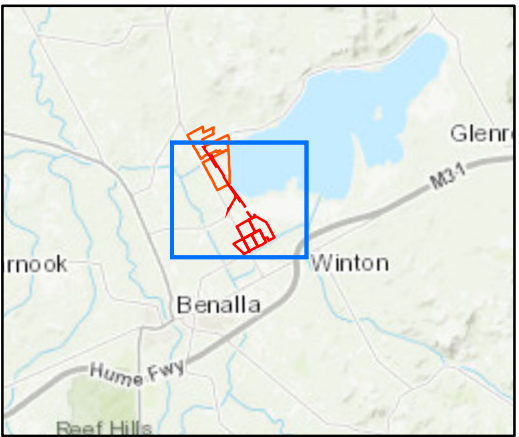
WEST MOKOAN SOLAR FARM
PROJECT
KENNEDYS CREEK AMENDMENT
ZONING PLAN

Legend

- Kennedys Creek Solar Farm Site Boundary
- West Mokoan Solar Farm Site Boundary
- Transmission Line Investigation Area
- Indicative Transmission Line Easement
- Indicative Substation Locations
- Indicative Transmission Line Centreline
- Indicative Transmission Line Pole Locations

Planning Scheme Zones

- FZ - Farming Zone
- IN1Z - Industrial 1 Zone
- IN2Z - Industrial 2 Zone
- PUZ1 - Public Use Zone - Service and Utility
- TRZ1 - State Transport Infrastructure
- TRZ2 - Principal Road Network
- TRZ3 - Significant Municipal Road
- RLZ - Rural Living Zone
- SUZ - Special Uses Zone



Service Layer Credits: Source: Esri, Maxar, GeoEye, Earthstar Geographics, CNES/Airbus DS, USDA, USGS, AeroGRID, IGN, and the GIS User Community

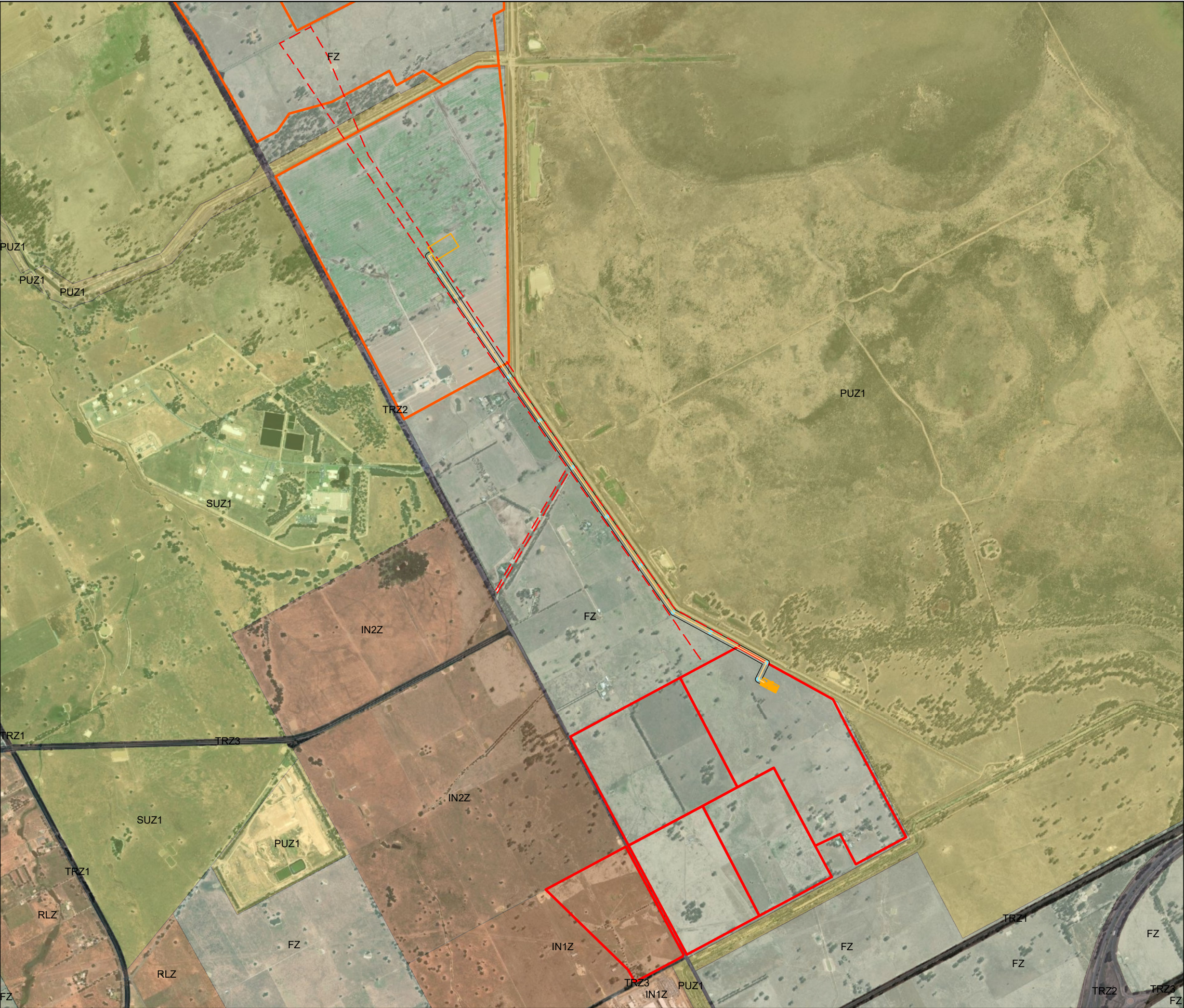
Copyright: Copyright in material relating to the base layers (contextual information) on this page is licensed under a Creative Commons, Attribution 3.0 Australia licence © Department of Finance, Services & Innovation 2017, (Digital Cadastral Database and/or Digital Topographic Database).

The terms of Creative Commons Attribution 3.0 Australia License are available from <https://creativecommons.org/licenses/by/3.0/au/legalcode> (Copyright Licence)

Neither the Department of Finance, Services & Innovation make any representations or warranties of any kind, about the accuracy, reliability, completeness or suitability or fitness for purpose in relation to the content (in accordance with clause 5 of the Copyright Licence). AECOM has prepared this document for the sole use of its Client based on the Client's description of its requirements having regard to the assumptions and other limitations set out.

ADVERTISED PLAN

AECOM does not warrant the accuracy or completeness of information displayed in this map and any person using it does so at their own risk. AECOM shall bear no responsibility or liability for any errors, faults, defects, or omissions in the information.



ADVERTISED PLAN

AECOM



0 0.5 1 Km

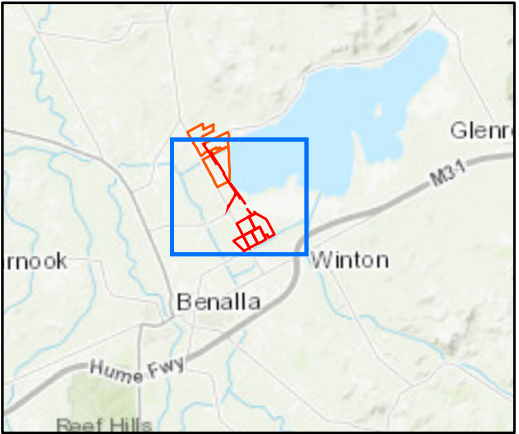
WEST MOKOAN SOLAR FARM
PROJECT
KENNEDYS CREEK AMENDMENT
OVERLAY PLAN

Legend

- Kennedys Creek Solar Farm Site Boundary
- West Mokoan Solar Farm Site Boundary
- Transmission Line Investigation Area
- Indicative Transmission Line Easement
- Indicative Substation Locations
- Indicative Transmission Line Centreline
- Indicative Transmission Line Pole Locations

Planning Scheme Overlays

- RFO - Rural Floodway Overlay
- VPO - Vegetation Protection Overlay
- BMO - Bushfire Management Overlay



Service Layer Credits: Source: Esri, Maxar, GeoEye, Earthstar Geographics, CNES/Airbus DS, USDA, USGS, AeroGRID, IGN, and the GIS User Community

Copyright: Copyright in material relating to the base layers (contextual information) on this page is licensed under a Creative Commons, Attribution 3.0 Australia licence © Department of Finance, Services & Innovation 2017, (Digital Cadastral Database and/or Digital Topographic Database).

The terms of Creative Commons Attribution 3.0 Australia License are available from <https://creativecommons.org/licenses/by/3.0/au/legalcode> (Copyright Licence)

Neither the Department of Finance, Services & Innovation make any representations or warranties of any kind, about the accuracy, reliability, completeness or suitability or fitness for purpose in relation to the content (in accordance with clause 5 of the Copyright Licence). AECOM has prepared this document for the sole use of its Client based on the Client's description of its requirements having regard to the assumptions and other limitations set out.

ADVERTISED PLAN

AECOM does not warrant the accuracy or completeness of information displayed in this map and any person using it does so at their own risk. AECOM shall bear no responsibility or liability for any errors, faults, defects, or omissions in the information.

AECOM does not warrant the accuracy or completeness of information displayed in this map and any person using it does so at their own risk. AECOM shall bear no responsibility or liability for any errors, faults, defects, or omissions in the information.



AECOM

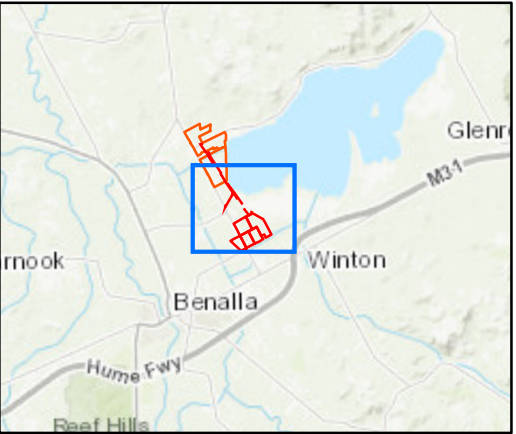


**WEST MOKOAN SOLAR FARM
PROJECT
KENNEDYS CREEK AMENDMENT
LANDOWNERSHIP PLAN**

Legend

- Kennedys Creek Solar Farm Site Boundary
- West Mokoan Solar Farm Site Boundary
- Indicative Transmission Line Easement
- Indicative Transmission Line Centreline
- Indicative Transmission Line Pole Locations
- Indicative Substation Locations
- Easements
- Parcel Boundaries

ADVERTISED PLAN



Service Layer Credits: Source: Esri, Maxar, GeoEye, Earthstar Geographics, CNES/Airbus DS, USDA, USGS, AeroGRID, IGN, and the GIS User Community

Copyright: Copyright in material relating to the base layers (contextual information) on this page is licensed under a Creative Commons, Attribution 3.0 Australia licence © Department of Finance, Services & Innovation 2017, (Digital Cadastral Database and/or Digital Topographic Database).

The terms of Creative Commons Attribution 3.0 Australia License are available from <https://creativecommons.org/licenses/by/3.0/au/legalcode> (Copyright Licence)

Neither the Department of Finance, Services & Innovation make any representations or warranties of any kind, about the accuracy, reliability, completeness or suitability or fitness for purpose in relation to the content (in accordance with clause 5 of the Copyright Licence). AECOM has prepared this document for the sole use of its Client based on the Client's description of its requirements having regard to the assumptions and other limitations set out.

ADVERTISED PLAN

ADVERTISED PLAN

	Site Boundary
	Site Entrance
	Danger signage
	Security Fence
	Single Axis Tracker 84
	Single Axis Tracker 56
	PCUs (2 inverters)
	4m solar farm access road with 20m long & 6m wide passing bays every 600 m
	Proposed 10 m wide planting zone
	Proposed 5 m wide planting zone
	Infill planting to existing boundary vegetation
	Existing Environmental Values to be retained
	Existing Overhead line Easement
	Existing Overhead line Easement to be removed
	Proposed Easement Realignment
	Gas Pipeline
	Watercourse
	Water Supply Pipeline
	Underground telecommunication cable
	Fire Break
	Trees to be retained
	Trees to be removed
	Existing Transmission Line Easement
	45,000l Water tanks
	Area of cultural heritage sensitivity
	220kV Transmission line investigation area

PV SYSTEM SPECIFICATIONS	
Capacity - DC	159.12 MW _p
Capacity - AC	125.00 MW _{AC}
DC/AC Ratio	1.27
Modules	(279160) 570 W Bifacial
Mods. per string	28
Pitch	5.0 m
GCR	45.50 %
Mounting structure	(3584) Single Axis Trackers
• Full	2802
• Partial	782
• Half	
Inverters	(48) Central Inverter 3430KVA
• Nominal Power	3575 kVA
Access roads	14846 m
Fenced area	(2504355 m ²) 618.840 Acres
• Perimeter	8769 m

Revisions:			
13	30.09.22	Layout update	AG
12	14.09.22	Layout update	AGV
11	30.08.22	Module and Substation location update	AGV
10	04.02.22	Updated trees to be retained	AG
09	28.01.22	Legend update	AG
08	18.01.22	Substation, presentation and table update	MG
15	23.02.23	Planning updates	AG GK
14	19.01.23	Legend updated	AG
Rev	Date	Comments	Dwn Chkd

AGV	CHECKED	APPROVED	30.09.2022
DRAWN	CHECKED	APPROVED	DATE

PROJECT NAME & ADDRESS:
Location: Benalla, Victoria
Australia

NOTES:
- Inverter / Plant Capacity (MVA/MWac): 1.32
- Mod. dimensions (mm): 2279 x 1134
- DC System Voltage (V): 1500
- Azimuth: 0°

Paper Size:	Scale:	Sheet:
A3	1:10000	1

CAPACITY:
279160 Modules 159.12 MWp

DRAWING TITLE:
AUS_Kennedys_LP1-Initial Design Layout_15

DRAWING NUMBER:
LP1-IDL

STATUS:
Preliminary

ADVERTISED PLAN

Lightsource Development Limited,
7th Floor, 33 Holborn, London, EC1N 2HU
General: +44 (0) 333 200 0755
Web: www.lightsourcebp.com
info@lightsourcebp.com

ISO full bleed A3 (420.00 x 297.00 MM)- V.1.0

THIS DOCUMENT IS THE PROPERTY OF LIGHTSOURCE RENEWABLE DEVELOPMENT LTD
IT IS PROHIBITED TO REPRODUCE IT FOR OTHER PURPOSES WITHOUT AUTHORIZATION IN WRITING

ADVERTISED PLAN

	Site Boundary
	Site Entrance
	Danger signage
	Security Fence
	Single Axis Tracker 84
	Single Axis Tracker 56
	PCUs (2 inverters)
	4m solar farm access road with 20m long & 6m wide passing bays every 600 m
	Proposed 10 m wide planting zone
	Proposed 5 m wide planting zone
	Infill planting to existing boundary vegetation
	Existing Environmental Values to be retained
	Existing Overhead line Easement
	Existing Overhead line Easement to be removed
	Proposed Easement Realignment
	Gas Pipeline
	Watercourse
	Water Supply Pipeline
	Underground telecommunication cable
	Fire Break
	Trees to be retained
	Trees to be removed
	Existing Transmission Line Easement
	45,000l Water tanks
	Area of cultural heritage sensitivity
	220kV Transmission line investigation area

PV SYSTEM SPECIFICATIONS	
Capacity - DC	159.12 MW _p
Capacity - AC	125.00 MW _{AC}
DC/AC Ratio	1.27
Modules	(279160) 570 W Bifacial
Mods. per string	28
Pitch	5.0 m
GCR	45.50 %
Mounting structure	(3584) Single Axis Trackers
• Full	2802
• Partial	782
• Half	
Inverters	(48) Central Inverter 3430KVA
• Nominal Power	3575 kVA
Access roads	14846 m
Fenced area	(2504355 m ²) 618.840 Acres
• Perimeter	8769 m

Revisions:			
13	30.09.22	Layout update	AG
12	14.09.22	Layout update	AGV
11	30.08.22	Module and Substation location update	AGV
10	04.02.22	Updated trees to be retained	AG
09	28.01.22	Legend update	AG
08	18.01.22	Substation, presentation and table update	MG
15	23.02.23	Planning updates	AG GK
14	19.01.23	Legend updated	AG
Rev	Date	Comments	Dwn Chkd

AGV	CHECKED	APPROVED	30.09.2022
DRAWN	CHECKED	APPROVED	DATE

PROJECT NAME & ADDRESS:
Location: Benalla, Victoria
Australia

NOTES:
- Inverter / Plant Capacity (MVA/MWac): 1.32
- Mod. dimensions (mm): 2279 x 1134
- DC System Voltage (V): 1500
- Azimuth: 0°

Paper Size:	Scale:	Sheet:
A3	1:10000	1

CAPACITY:
279160 Modules 159.12 MWp

DRAWING TITLE:
AUS_Kennedys_LP1-Initial Design Layout_15

DRAWING NUMBER:
LP1-IDL

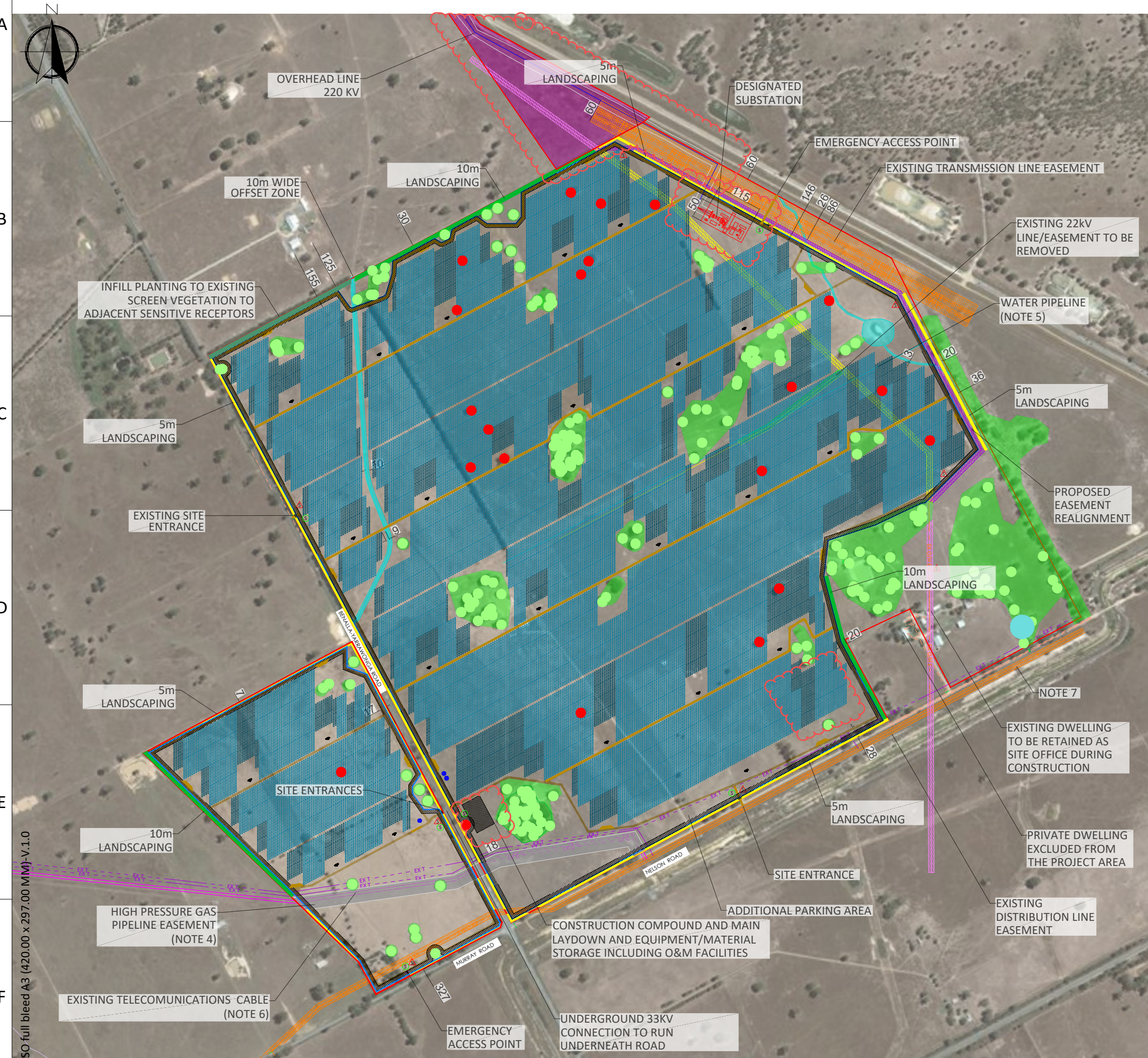
STATUS:
Preliminary

ADVERTISED PLAN

Lightsource bp

Lightsource Development Limited,
7th Floor, 33 Holborn, London, EC1N 2HU
General: +44 (0) 333 200 0755
Web: www.lightsourcebp.com
info@lightsourcebp.com

ISO full bleed A3 (420.00 x 297.00 MM)- V.1.0



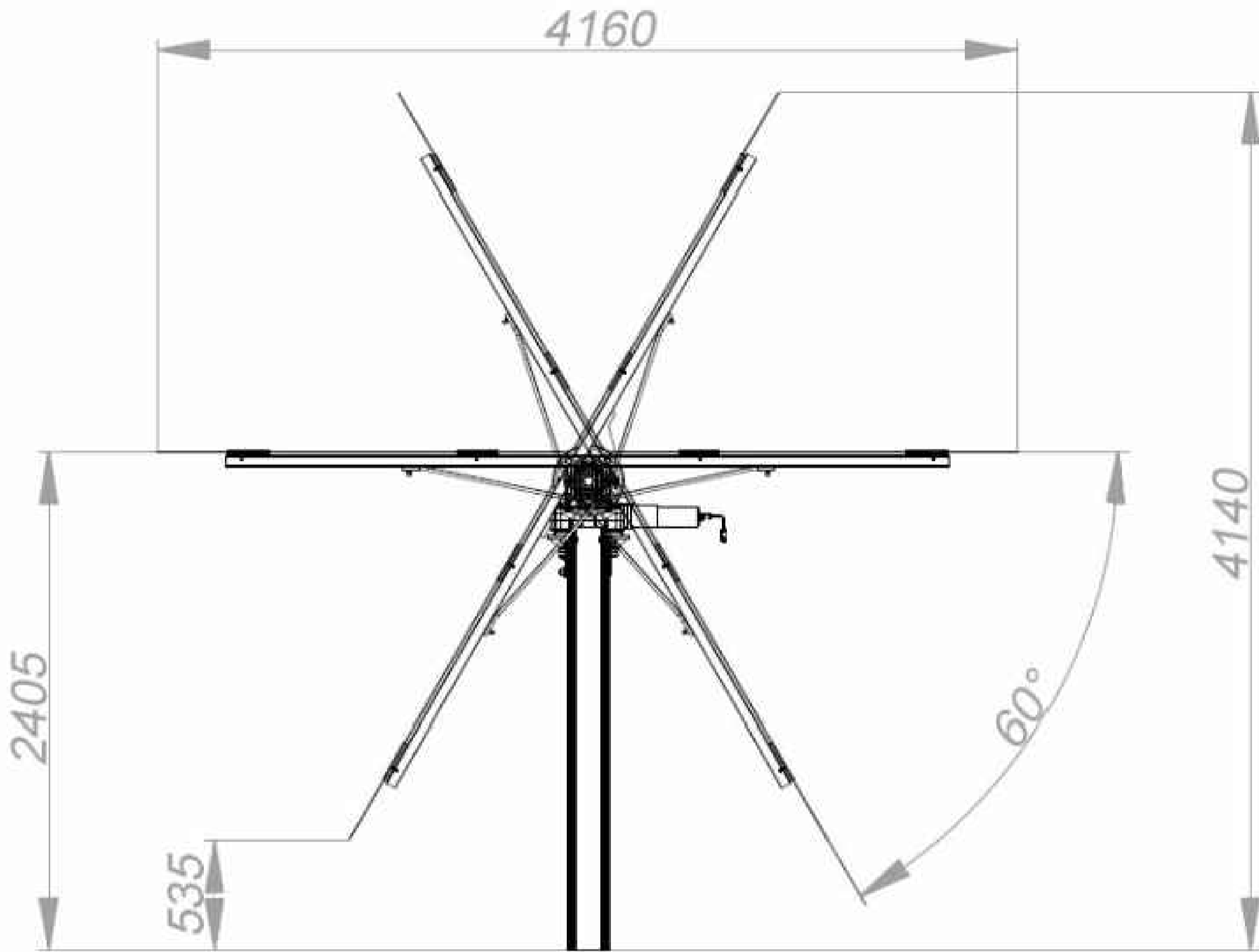


A
B
C
D
E
F

ADVERTISED PLAN

THIS DOCUMENT IS THE PROPERTY OF LIGHTSOURCE RENEWABLE DEVELOPMENT Ltd
IS PROHIBITED TO REPRODUCE FOR OTHER PURPOSES WITHOUT AUTHORIZATION IN WRITING

- NOTES:
1. 14.8m WIDE OVERHEAD 22kV DISTRIBUTION LINE EASEMENT.
 2. EXISTING 60m WIDE OVERHEAD 220kV TRANSMISSION LINE EASEMENT NOT AMENDED BUT SHOWN FOR CONTEXT.
 3. DIMENSIONS ARE IN METRES UNLESS NOTED OTHERWISE.
 4. FINAL EASEMENT BOUNDARY FOR NEW 220kV OVERHEAD LINE YET TO BE FINALISED. EXTENT OF THE NEW 220kV EASEMENT OVERHEAD LINE IS SHOWN IN FULL IN A SEPARATE TRANSMISSION LINE PLAN.



TRACKER ELEVATION
N.T.S.

ADVERTISED PLAN

DRAWING COLOUR CODED - PRINT ALL COPIES IN COLOUR.

NOT FOR CONSTRUCTION

PLEASE NOTE THE ENCLOSED DRAWINGS ARE ONLY PRELIMINARY AND NOT FOR CONSTRUCTION, AND THEREFORE ARE LIKELY TO BE SUBJECT TO CHANGE.

AECOM

PROJECT

KENNEDYS
CREEK
SOLAR FARM

BENALLA
Victoria

CLIENT

433 Link
Development Pty Ltd
Level 27, 150 Lonsdale Street
Melbourne, VIC 3000



CONSULTANT

AECOM
COLLINS SQUARE, LEVEL 10, TOWER TWO
727 COLLINS STREET, MELBOURNE, VIC 3008
613 9653 1234 tel 613 9654 7117 fax
www.aecom.com

SAFETY IN DESIGN INFORMATION

ARE THERE ANY ADDITIONAL HAZARDS / RISKS
NOT NORMALLY ASSOCIATED WITH THE TYPES
OF WORK DETAILED ON THIS DRAWING?

☒ NO
☐ YES

ISSUE/REVISION

0	12/09/2019	PRELIMINARY
I/R	DATE	DESCRIPTION

KEY PLAN

PROJECT NUMBER

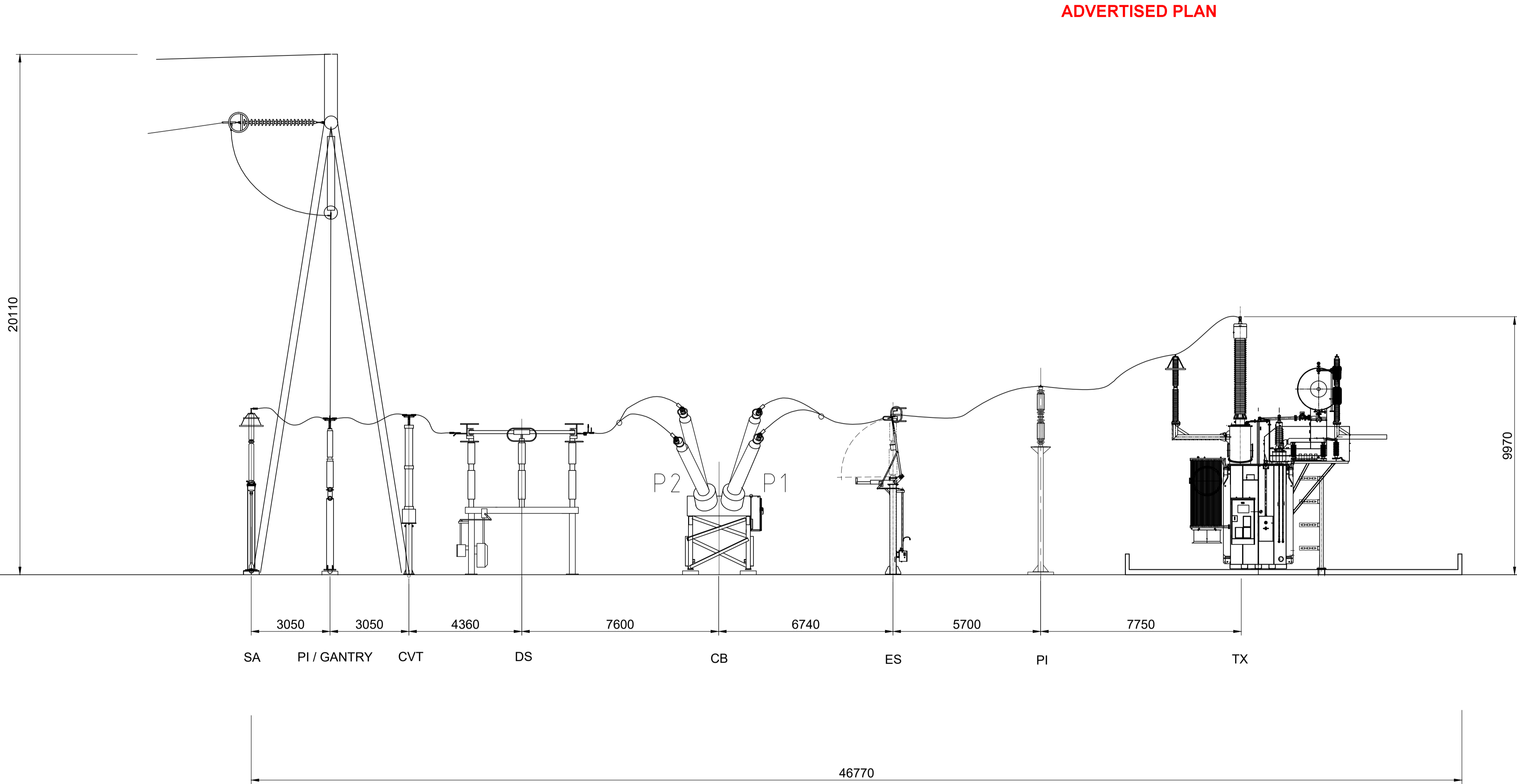
60597829

SHEET TITLE

SOLAR FARM
TYPICAL TRACKER
ELEVATION

SHEET NUMBER

SHT-EL-1021

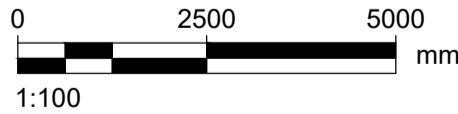


- NOTES:
- PLEASE NOTE THIS DRAWING IS CONCEPTUAL ONLY AND IS SUBJECT TO CHANGE ACCORDING TO PREFERRED CONNECTION OPTION AND ARRANGEMENT AND DETAILED DESIGN.
 - ALL DIMENSIONS IN MILLIMETERS UNLESS NOTED OTHERWISE.

TYPICAL SUBSTATION ELEVATION

Scale 1:100

NOT FOR CONSTRUCTION



This drawing is confidential and shall only be used for the purpose of this project. The signing of this title block confirms the design and drafting of this project have been prepared and checked in accordance with the AECOM quality assurance system to ISO 9001-2000.

AECOM

CONSULTANT

AECOM Australia Pty Ltd
A.B.N 20 093 846 925
www.aecom.com

PROJECT

PROJECT DATA

DATUM	SURVEY
-------	--------

ISSUE/REVISION

I/R	DATE	DESCRIPTION
2	11/01/2022	REVISION
1	19/12/2022	DRAFT ISSUE

PROJECT NUMBER

60597829

ADVERTISED PLAN

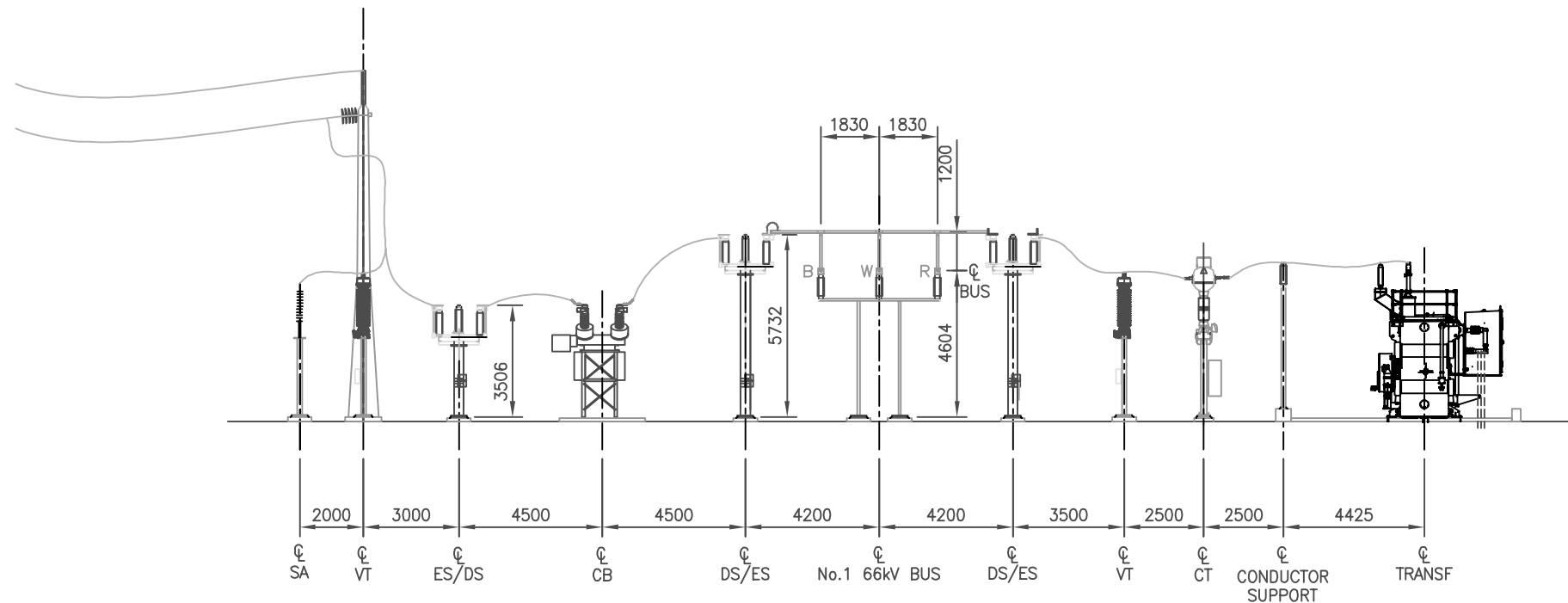
SHEET TITLE

KENNEDYS CREEK
220 KV SUBSTATION ELEVATION

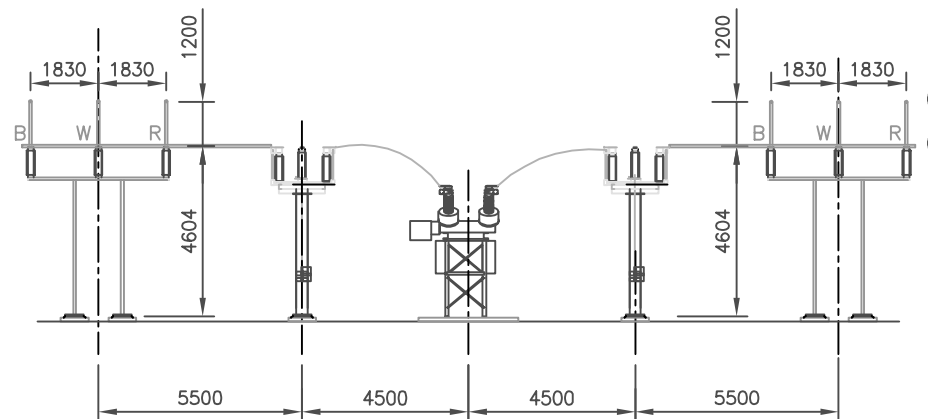
SHEET NUMBER

60597829-DWG-EL-001

ADVERTISED PLAN



SECTION A-A
SCALE 1:200



SECTION B-B
SCALE 1:200

NOT FOR CONSTRUCTION

PLEASE NOTE THE ENCLOSED DRAWINGS ARE ONLY PRELIMINARY AND NOT FOR CONSTRUCTION, AND THEREFORE ARE LIKELY TO BE SUBJECT TO CHANGE.



PROJECT
KENNEDYS CREEK
SOLAR FARM
CONCEPT DESIGN

BENALLA
Victoria

CLIENT
433 Link
Development Pty Ltd
Level 27, 150 Lonsdale Street
Melbourne, VIC 3000



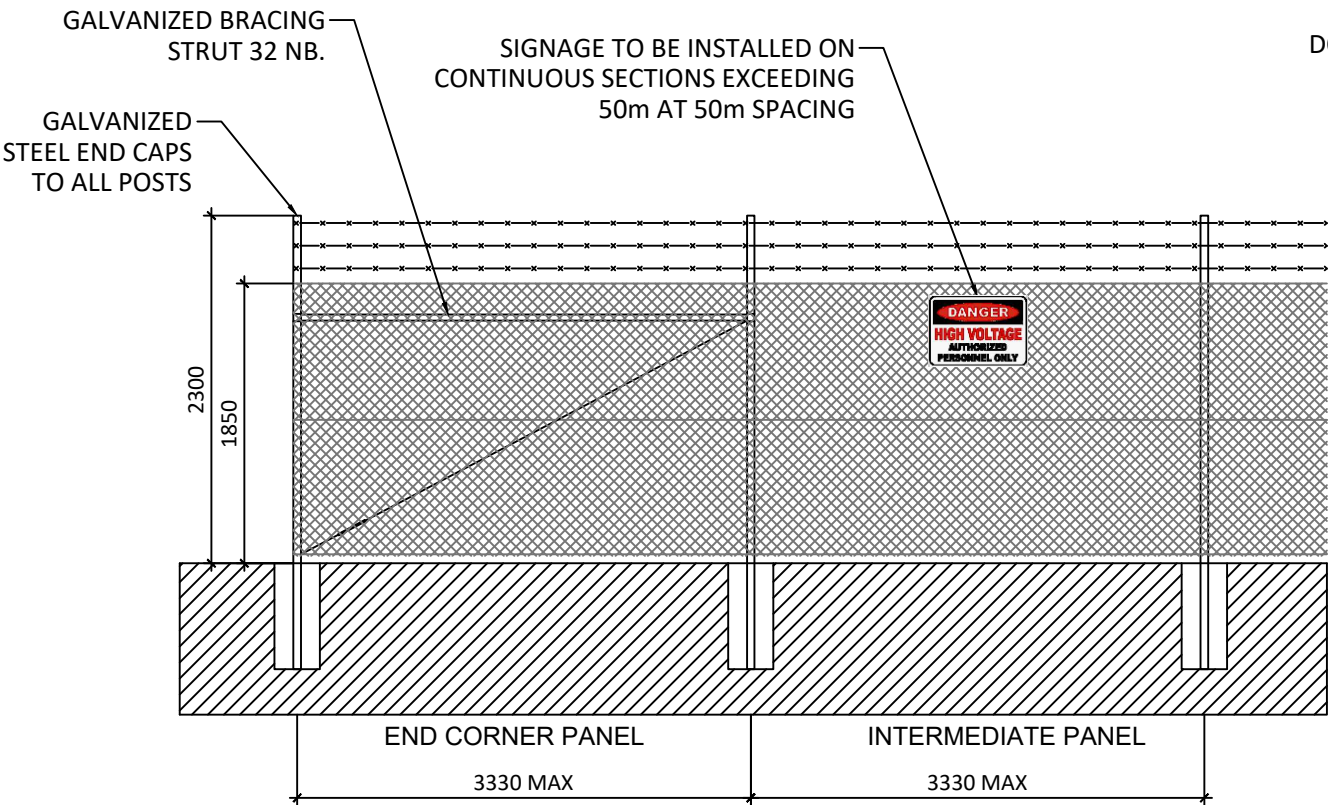
CONSULTANT
AECOM
COLLINS SQUARE, LEVEL 10, TOWER TWO
727 COLLINS STREET, MELBOURNE, VIC 3008
613 9653 1234 tel 613 9654 7117 fax
www.aecom.com

ISSUE/REVISION		
4		
3		
2		
1		
0	13/01/2020	PRELIMINARY
I/R	DATE	DESCRIPTION

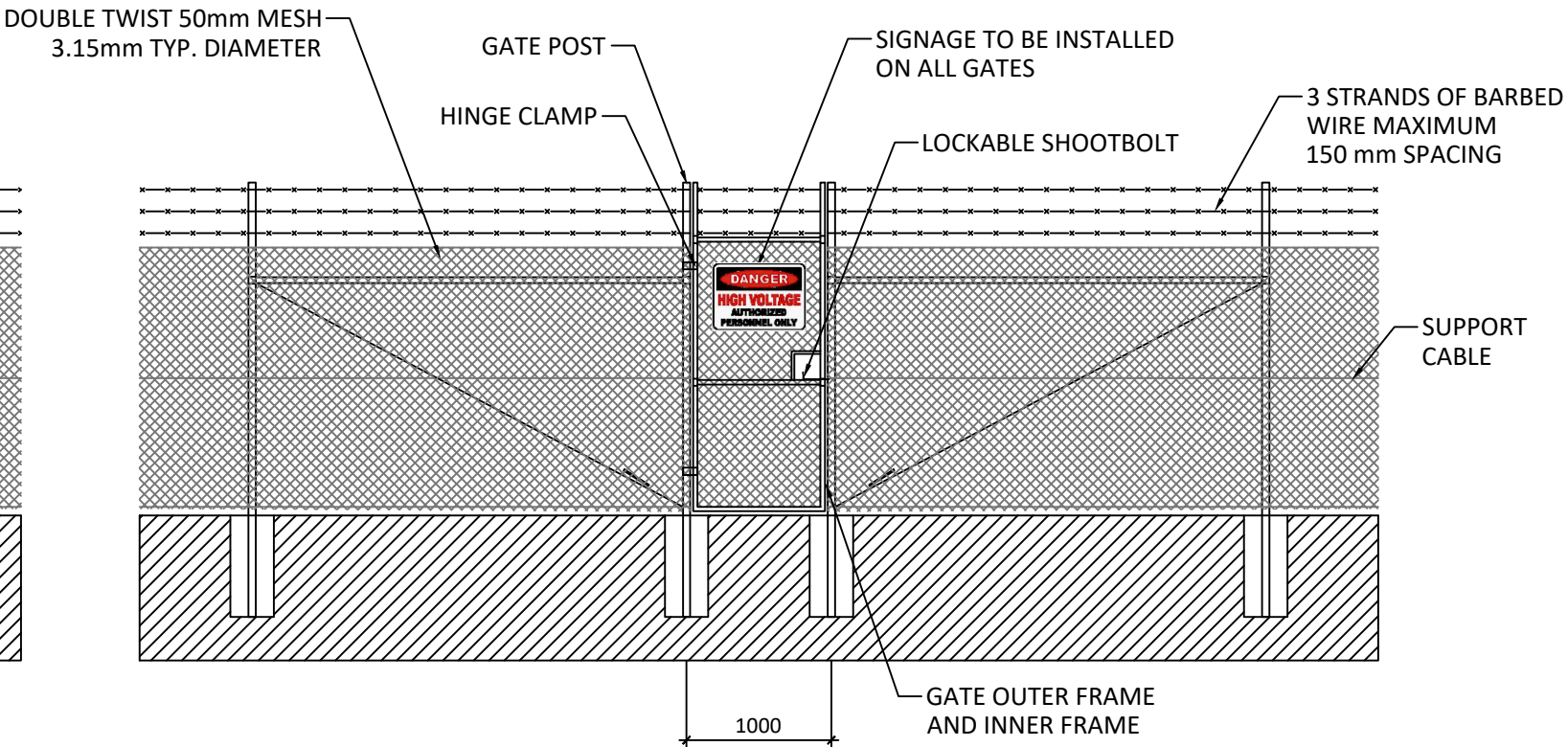
PROJECT NUMBER
60585632
SHEET TITLE
KENNEDYS CREEK
SOLAR FARM
66/33kV SWITCHYARD SECTIONS
SHEET NUMBER
60585632-DWG-EL-0004

ADVERTISED PLAN

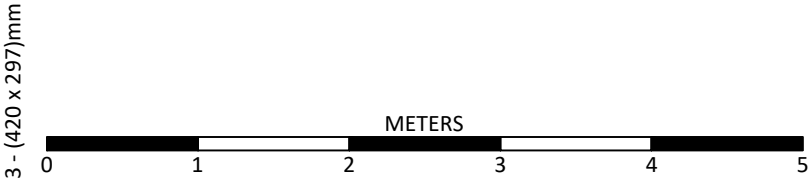
ADVERTISED PLAN



TYPICAL FENCING



TYPICAL PERSONAL ENTRY
GATE OPENING



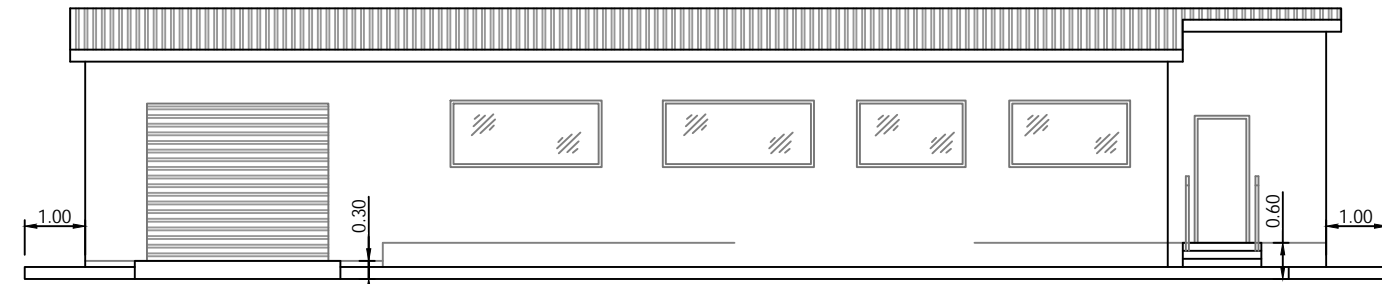
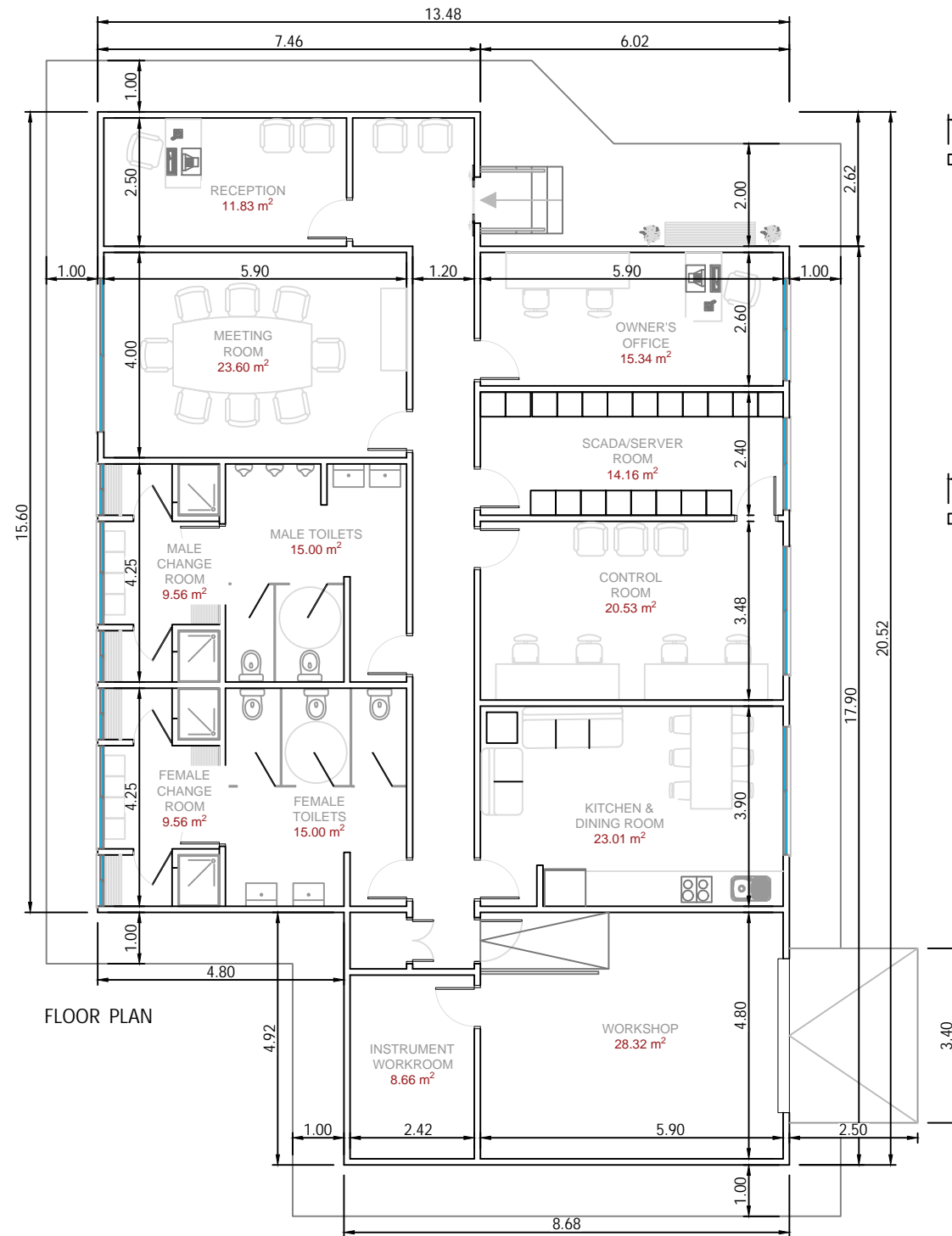
THIS DOCUMENT IS THE PROPERTY OF LIGHTSOURCE DEVELOPMENT SERVICES AUSTRALIA PTY LTD
IT IS PROHIBITED TO REPRODUCE IT FOR OTHER PURPOSES WITHOUT AUTHORIZATION IN WRITING

Chain Wire Fence with Barbed Wire Details			
DA			12.11.19
DRAWN	CHECKED	APPROVED	DATE
Paper Size: A3	Scale: 1:50@A3	Sheet: 1	
DRAWING NUMBER: CWW_01		STATUS: Preliminary	

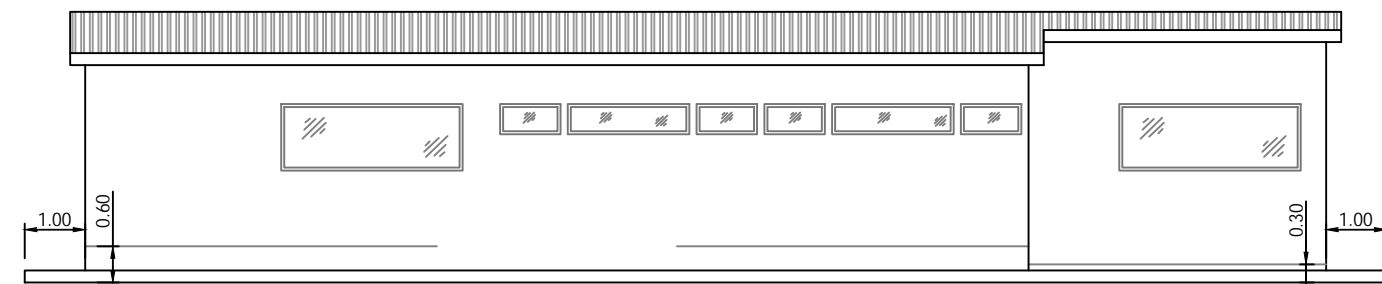
ADVERTISED PLAN

Lightsource Development Services Australia Pty Ltd
Level 9 401 Collins Street, Melbourne, 3000
General: +61 (3) 9071 0326
Web: www.lightsourcecbp.com
info@lightsourcebp.com

1	2	3	4	5	6	7	8
---	---	---	---	---	---	---	---

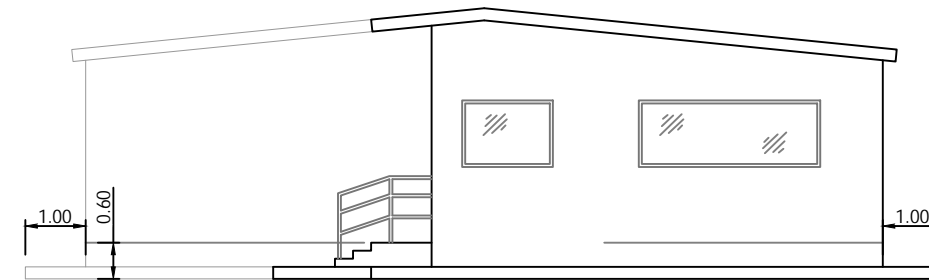


FRONT ELEVATION

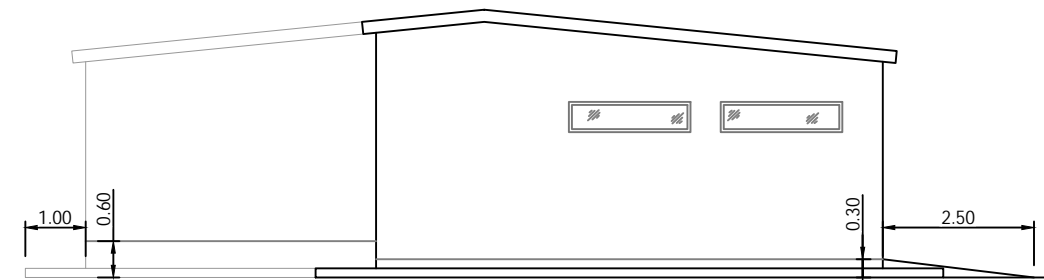


BACK ELEVATION

ADVERTISED PLAN




SIDE ELEVATION



SIDE ELEVATION

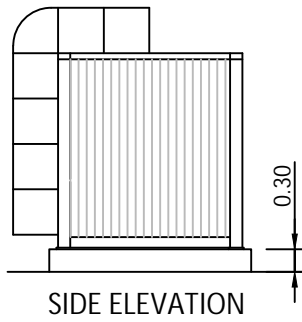
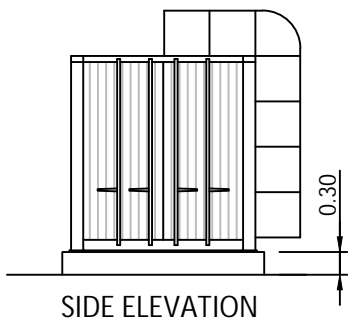
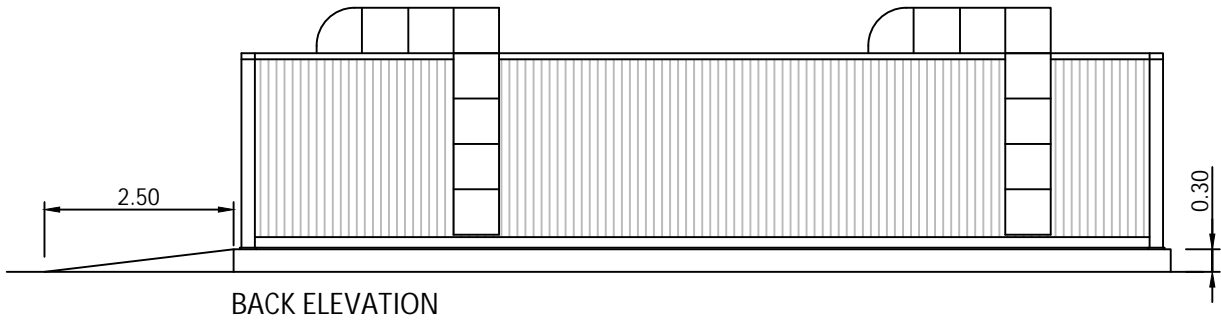
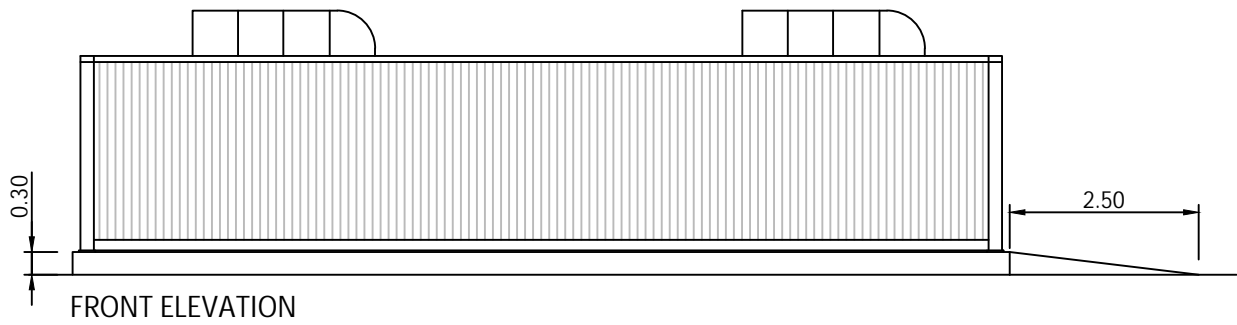
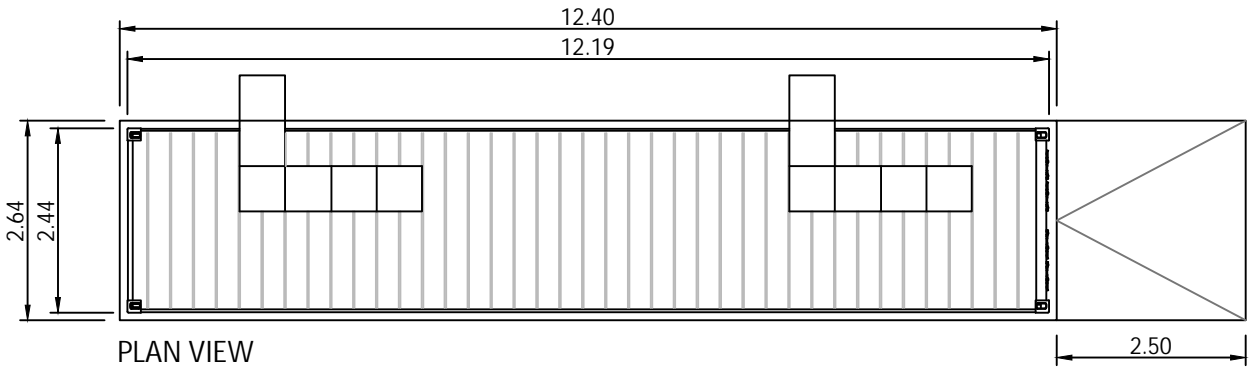
NOTES
1.- All measurements are indicative and in meters
2.- Toilets and changing rooms as per local requirements

Amenities Building			
DA			03.10.18
DRAWN	CHECKED	APPROVED	DATE
Paper Size: A3	Scale: 1:125@A3	Sheet: 1	
DRAWING NUMBER: AMB_01		STATUS: Preliminary	
			
<p>Lightsource Development Services Australia Pty Ltd Level 9 401 Collins Street, Melbourne, 3000 General: +61 (3) 9071 0326 Web: www.lightsourcecbp.com info@lightsourcecbp.com</p>			

THIS DOCUMENT IS THE PROPERTY OF LIGHTSOURCE DEVELOPMENT SERVICES AUSTRALIA PTY LTD
IT IS PROHIBITED TO REPRODUCE IT FOR OTHER PURPOSES WITHOUT AUTHORIZATION IN WRITING

A3 - (420 x 297)mm

Storage Container



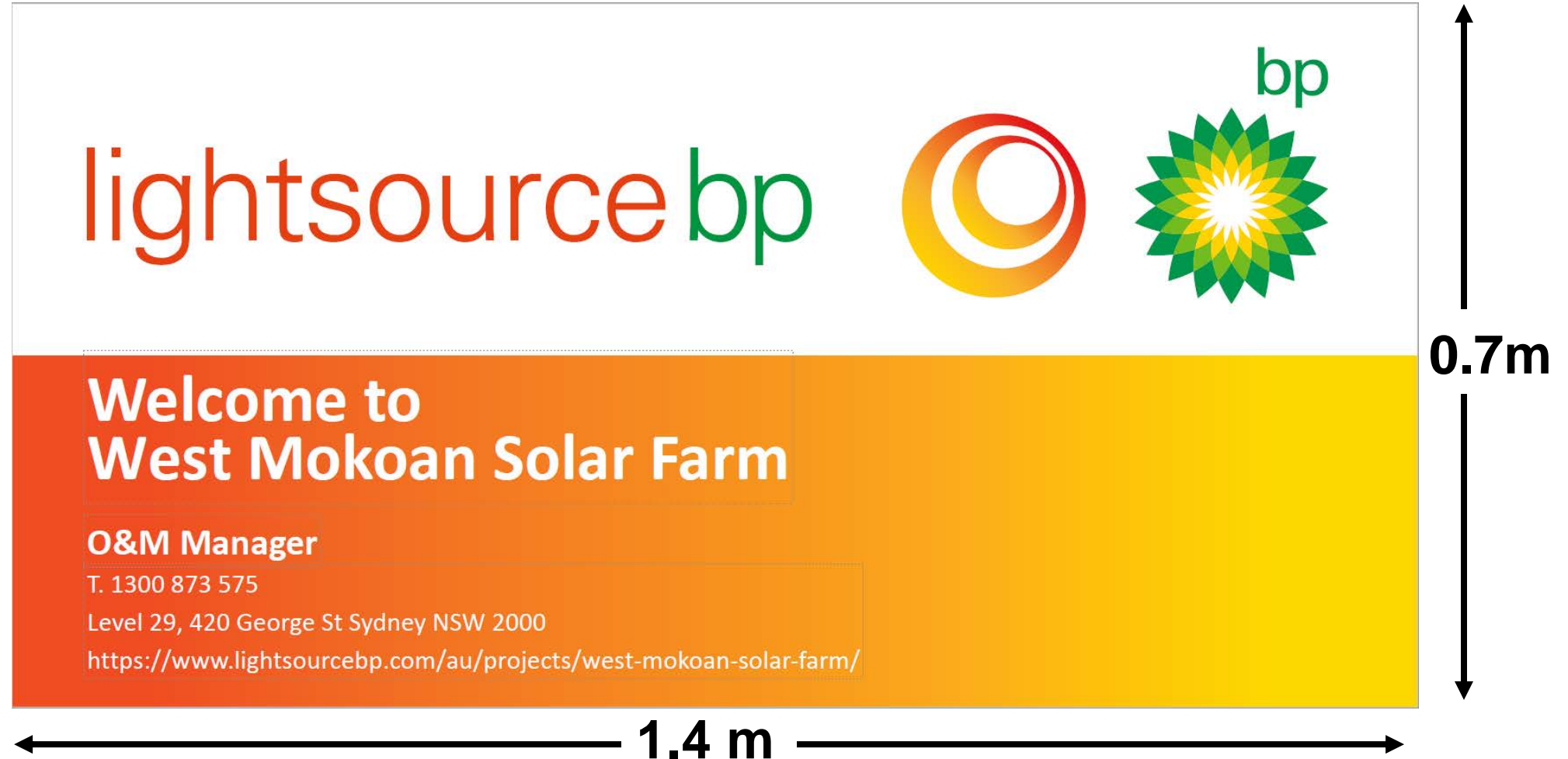
ADVERTISED PLAN

THIS DOCUMENT IS THE PROPERTY OF LIGHTSOURCE DEVELOPMENT SERVICES AUSTRALIA PTY LTD
IT IS PROHIBITED TO REPRODUCE IT FOR OTHER PURPOSES WITHOUT AUTHORIZATION IN WRITING

Storage Container			
DA			09.11.18
DRAWN	CHECKED	APPROVED	DATE
Paper Size: A3	Scale: 1:100@A3	Sheet: 1	
DRAWING NUMBER: STC_01		STATUS: Preliminary	
<div><div>lightsource</div><div>bp</div><div>bp</div></div> <p>ADVERTISED PLAN</p> <p>Lightsource Development Services Australia Pty Ltd Level 9 401 Collins Street, Melbourne, 3000 General: +61 (3) 9071 0326 Web: www.lightsourcebp.com info@lightsourcebp.com</p>			

A3 - (420 x 297)mm

ADVERTISED PLAN



ADVERTISED PLAN