

This report provides information to support an application to remove, destroy or lop native vegetation in accordance with the *Guidelines for the removal, destruction or lopping of native vegetation*. The report **is not an assessment by DELWP** of the proposed native vegetation removal. Native vegetation information and offset requirements have been determined using spatial data provided by the applicant or their consultant.

Date of issue: 27/02/2023
Time of issue: 1:09 am

Report ID: ACM_2023_002

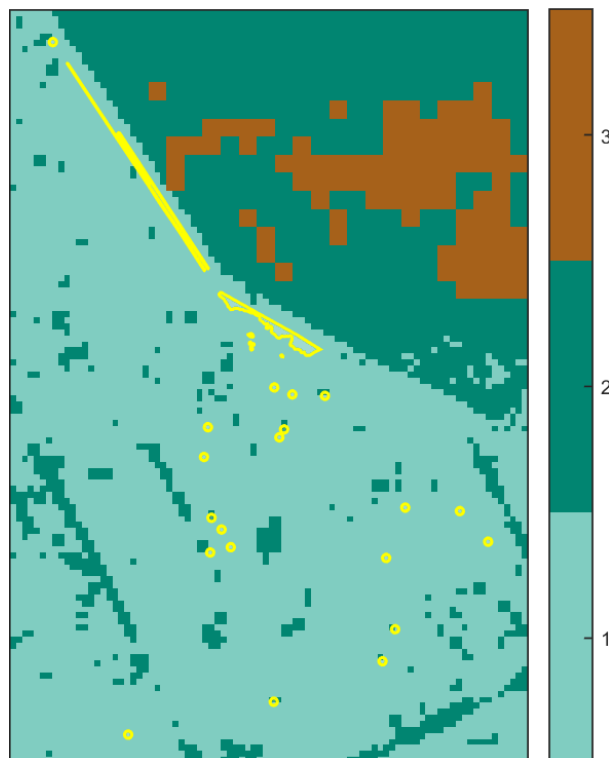
Project ID	Aecom_KennedyCrk_Loss_EnSym_VG94_V6
------------	-------------------------------------

Assessment pathway

Assessment pathway	Detailed Assessment Pathway
Extent including past and proposed	3.369 ha
Extent of past removal	0.000 ha
Extent of proposed removal	3.369 ha
No. Large trees proposed to be removed	20
Location category of proposed removal	Location 2 The native vegetation is in an area mapped as an endangered Ecological Vegetation Class (as per the statewide EVC map). Removal of less than 0.5 hectares of native vegetation in this location will not have a significant impact on any habitat for a rare or threatened species.

1. Location map

ADVERTISED PLAN



Offset requirements if a permit is granted

Any approval granted will include a condition to obtain an offset that meets the following requirements:

General offset amount¹	0.640 general habitat units
Vicinity	Goulburn Broken Catchment Management Authority (CMA) or Benalla Rural City Council
Minimum strategic biodiversity value score ²	0.218
Large trees	20 large trees

NB: values within tables in this document may not add to the totals shown above due to rounding

Appendix 1 includes information about the native vegetation to be removed

Appendix 2 includes information about the rare or threatened species mapped at the site.

Appendix 3 includes maps showing native vegetation to be removed and extracts of relevant species habitat importance maps

ADVERTISED PLAN

¹ The general offset amount required is the sum of all general habitat units in Appendix 1.

² Minimum strategic biodiversity score is 80 per cent of the weighted average score across habitat zones where a general offset is required

Next steps

Any proposal to remove native vegetation must meet the application requirements of the Detailed Assessment Pathway and it will be assessed under the Detailed Assessment Pathway.

If you wish to remove the mapped native vegetation you are required to apply for a permit from your local council. Council will refer your application to DELWP for assessment, as required. **This report is not a referral assessment by DELWP.**

This *Native vegetation removal report* must be submitted with your application for a permit to remove, destroy or lop native vegetation.

Refer to the *Guidelines for the removal, destruction or lopping of native vegetation* (the Guidelines) for a full list of application requirements. This report provides information that meets the following application requirements:

- The assessment pathway and reason for the assessment pathway
- A description of the native vegetation to be removed (partly met)
- Maps showing the native vegetation and property (partly met)
- Information about the impacts on rare or threatened species.
- The offset requirements determined in accordance with section 5 of the Guidelines that apply if approval is granted to remove native vegetation.

Additional application requirements must be met including:

- Topographical and land information
- Recent dated photographs
- Details of past native vegetation removal
- An avoid and minimise statement
- A copy of any Property Vegetation Plan that applies
- A defensible space statement as applicable
- A statement about the Native Vegetation Precinct Plan as applicable
- A site assessment report including a habitat hectare assessment of any patches of native vegetation and details of trees
- An offset statement that explains that an offset has been identified and how it will be secured.

ADVERTISED PLAN

© The State of Victoria Department of Environment, Land, Water and Planning Melbourne 2023

This work is licensed under a Creative Commons Attribution 4.0 International licence. You are free to re-use the work under that licence, on the condition that you credit the State of Victoria as author. The licence does not apply to any images, photographs or branding, including the Victorian Coat of Arms, the Victorian Government logo and the Department of Environment, Land, Water and Planning logo. To view a copy of this licence, visit <http://creativecommons.org/licenses/by/3.0/au/deed.en>

Authorised by the Victorian Government, 8 Nicholson Street, East Melbourne.

For more information contact the DELWP Customer Service Centre 136 186

www.delwp.vic.gov.au

Disclaimer

This publication may be of assistance to you but the State of Victoria and its employees do not guarantee that the publication is without flaw of any kind or is wholly appropriate for your particular purposes and therefore disclaims all liability for any error, loss or other consequence which may arise from you relying on any information in this publication.

Obtaining this publication does not guarantee that an application will meet the requirements of Clauses 52.16 or 52.17 of the Victoria Planning Provisions and Victorian planning schemes or that a permit to remove native vegetation will be granted.

Notwithstanding anything else contained in this publication, you must ensure that you comply with all relevant laws, legislation, awards or orders and that you obtain and comply with all permits, approvals and the like that affect, are applicable or are necessary to undertake any action to remove, lop or destroy or otherwise deal with any native vegetation or that apply to matters within the scope of Clauses 52.16 or 52.17 of the Victoria Planning Provisions and Victorian planning schemes.

ADVERTISED PLAN

Appendix 1: Description of native vegetation to be removed

The species-general offset test was applied to your proposal. This test determines if the proposed removal of native vegetation has a proportional impact on any rare or threatened species habitats above the species offset threshold. The threshold is set at 0.005 per cent of the mapped habitat value for a species. When the proportional impact is above the species offset threshold a species offset is required. This test is done for all species mapped at the site. Multiple species offsets will be required if the species offset threshold is exceeded for multiple species.

Where a zone requires species offset(s), the species habitat units for each species in that zone is calculated by the following equation in accordance with the Guidelines:

$$\text{Species habitat units} = \text{extent} \times \text{condition} \times \text{species landscape factor} \times 2, \text{ where the species landscape factor} = 0.5 + (\text{habitat importance score}/2)$$

The species offset amount(s) required is the sum of all species habitat units per zone

Where a zone does not require a species offset, the general habitat units in that zone is calculated by the following equation in accordance with the Guidelines:

$$\text{General habitat units} = \text{extent} \times \text{condition} \times \text{general landscape factor} \times 1.5, \text{ where the general landscape factor} = 0.5 + (\text{strategic biodiversity value score}/2)$$

The general offset amount required is the sum of all general habitat units per zone.

Native vegetation to be removed

Information provided by or on behalf of the applicant in a GIS file							Information calculated by EnSym					
Zone	Type	BioEVC	BioEVC conservation status	Large tree(s)	Partial removal	Condition score	Polygon Extent	Extent without overlap	SBV score	HI score	Habitat units	Offset type
1-ST54	Scattered Tree	vriv0055_62	Endangered	1	no	0.200	0.070	0.070	0.340		0.014	General
1-ST58	Scattered Tree	vriv0055_62	Endangered	1	no	0.200	0.070	0.070	0.370		0.014	General
1-ST62	Scattered Tree	vriv0055_62	Endangered	1	no	0.200	0.070	0.070	0.370		0.014	General
1-ST83	Scattered Tree	vriv0055_62	Endangered	1	no	0.200	0.070	0.070	0.362		0.014	General
1-ST84	Scattered Tree	vriv0055_62	Endangered	1	no	0.200	0.070	0.070	0.130		0.012	General
1-ST85	Scattered Tree	vriv0055_62	Endangered	1	no	0.200	0.070	0.070	0.300		0.014	General
1-ST90	Scattered Tree	vriv0055_62	Endangered	1	no	0.200	0.070	0.070	0.274		0.013	General

ADVERTISED PLAN

Information provided by or on behalf of the applicant in a GIS file							Information calculated by EnSym					
Zone	Type	BioEVC	BioEVC conservation status	Large tree(s)	Partial removal	Condition score	Polygon Extent	Extent without overlap	SBV score	HI score	Habitat units	Offset type
1-ST92	Scattered Tree	vriv0055_62	Endangered	1	no	0.200	0.070	0.070	0.330		0.014	General
1-ST93	Scattered Tree	vriv0055_62	Endangered	1	no	0.200	0.070	0.070	0.370		0.014	General
1-ST107	Scattered Tree	vriv0055_62	Endangered	1	no	0.200	0.070	0.070	0.100		0.012	General
1-ST112	Scattered Tree	vriv0055_62	Endangered	1	no	0.200	0.070	0.070	0.190		0.013	General
1-ST115	Scattered Tree	vriv0055_62	Endangered	1	no	0.200	0.070	0.070	0.100		0.012	General
1-ST118	Scattered Tree	vriv0055_62	Endangered	1	no	0.200	0.070	0.070	0.100		0.012	General
1-ST126	Scattered Tree	vriv0055_62	Endangered	1	no	0.200	0.070	0.070	0.190		0.013	General
1-ST127	Scattered Tree	vriv0055_62	Endangered	1	no	0.200	0.070	0.070	0.100		0.012	General
1-ST133	Scattered Tree	vriv0055_62	Endangered	1	no	0.200	0.070	0.070	0.130		0.012	General
1-39	Patch	vriv0055_62	Endangered	0	no	0.160	0.080	0.080	0.161		0.011	General
1-37	Patch	vriv0055_62	Endangered	0	no	0.160	0.183	0.183	0.133		0.025	General
1-38	Patch	vriv0125	Endangered	0	no	0.309	0.229	0.229	0.150		0.061	General
1-36	Patch	vriv0055_62	Endangered	0	no	0.190	1.419	1.419	0.370		0.277	General
1-40	Patch	vriv0055_62	Endangered	0	no	0.170	0.022	0.022	0.396		0.004	General

Information provided by or on behalf of the applicant in a GIS file							Information calculated by EnSym					
Zone	Type	BioEVC	BioEVC conservation status	Large tree(s)	Partial removal	Condition score	Polygon Extent	Extent without overlap	SBV score	HI score	Habitat units	Offset type
1-41	Patch	vriv0055_62	Endangered	0	no	0.170	0.017	0.017	0.100		0.002	General
1-42	Patch	vriv0055_62	Endangered	0	no	0.170	0.009	0.009	0.100		0.001	General
1-43	Patch	vriv0055_62	Endangered	0	no	0.170	0.004	0.004	0.100		0.001	General
1-ST1	Scattered Tree	vriv0055_62	Endangered	1	no	0.200	0.070	0.070	0.100		0.012	General
1-ST2	Scattered Tree	vriv0055_62	Endangered	1	no	0.200	0.070	0.070	0.100		0.012	General
1-ST3	Scattered Tree	vriv0055_62	Endangered	1	no	0.200	0.070	0.070	0.100		0.012	General
1-ST4	Scattered Tree	vriv0055_62	Endangered	1	no	0.200	0.070	0.070	0.347		0.014	General

ADVERTISED PLAN

ADVERTISED PLAN

Appendix 2: Information about impacts to rare or threatened species' habitats on site

This table lists all rare or threatened species' habitats mapped at the site.

Species common name	Species scientific name	Species number	Conservation status	Group	Habitat impacted	% habitat value affected
Plump Windmill Grass	<i>Chloris ventricosa</i>	500757	Vulnerable	Dispersed	Habitat importance map	0.0001
Ridged Water-milfoil	<i>Myriophyllum porcatum</i>	502257	Vulnerable	Dispersed	Habitat importance map	0.0001
Yarran Wattle	<i>Acacia omalophylla</i>	500069	Endangered	Dispersed	Habitat importance map	0.0001
Western Silver Wattle	<i>Acacia decora</i>	500027	Vulnerable	Dispersed	Habitat importance map	0.0001
Striped Water-milfoil	<i>Myriophyllum striatum</i>	503869	Vulnerable	Dispersed	Habitat importance map	0.0000
Mueller Daisy	<i>Brachyscome muelleroides</i>	500465	Endangered	Dispersed	Habitat importance map	0.0000
Mugga	<i>Eucalyptus sideroxylon subsp. sideroxylon</i>	504493	Rare	Dispersed	Habitat importance map	0.0000
Narrow Goodenia	<i>Goodenia macbarronii</i>	501513	Vulnerable	Dispersed	Habitat importance map	0.0000
Northern Sandalwood	<i>Santalum lanceolatum</i>	503005	Endangered	Dispersed	Habitat importance map	0.0000
Veiled Fringe-sedge	<i>Fimbristylis velata</i>	501369	Rare	Dispersed	Habitat importance map	0.0000
Pale Flax-lily	<i>Dianella sp. aff. longifolia (Riverina)</i>	507399	Vulnerable	Dispersed	Habitat importance map	0.0000
Pepper Grass	<i>Panicum laevinode</i>	504808	Vulnerable	Dispersed	Habitat importance map	0.0000
Bent-leaf Wattle	<i>Acacia flexifolia</i>	500035	Rare	Dispersed	Habitat importance map	0.0000
Cottony Cassinia	<i>Cassinia ozothamnoides</i>	501560	Vulnerable	Dispersed	Habitat importance map	0.0000
Euroa Guinea-flower	<i>Hibbertia humifusa subsp. erigens</i>	505083	Vulnerable	Dispersed	Habitat importance map	0.0000
Dookie Daisy	<i>Brachyscome gracilis</i>	505494	Vulnerable	Dispersed	Habitat importance map	0.0000
Silky Umbrella-grass	<i>Digitaria ammophila</i>	501041	Vulnerable	Dispersed	Habitat importance map	0.0000
Small Scurf-pea	<i>Cullen parvum</i>	502773	Endangered	Dispersed	Habitat importance map	0.0000
Yellow-tongue Daisy	<i>Brachyscome chrysoglossa</i>	503654	Vulnerable	Dispersed	Habitat importance map	0.0000

ADVERTISED PLAN

Ausfeld's Wattle	<i>Acacia ausfeldii</i>	500013	Vulnerable	Dispersed	Habitat importance map	0.0000
Umbrella Grass	<i>Digitaria divaricatissima</i> var. <i>divaricatissima</i>	501045	Vulnerable	Dispersed	Habitat importance map	0.0000
Riverina Bitter-cress	<i>Cardamine moirensis</i>	505032	Rare	Dispersed	Habitat importance map	0.0000
Stiff Groundsel	<i>Senecio behrianus</i>	503101	Endangered	Dispersed	Habitat importance map	0.0000
Western Golden-tip	<i>Goodia medicaginea</i>	501518	Rare	Dispersed	Habitat importance map	0.0000
Rye Beetle-grass	<i>Tripogon loliiformis</i>	503455	Rare	Dispersed	Habitat importance map	0.0000
Broom Bitter-pea	<i>Daviesia genistifolia</i> s.s.	503813	Rare	Dispersed	Habitat importance map	0.0000
Smooth Minuria	<i>Minuria integerrima</i>	502201	Rare	Dispersed	Habitat importance map	0.0000
Long Eryngium	<i>Eryngium paludosum</i>	501238	Vulnerable	Dispersed	Habitat importance map	0.0000
Dark Wire-grass	<i>Aristida calycina</i> var. <i>calycina</i>	503630	Rare	Dispersed	Habitat importance map	0.0000
Pale Swamp Everlasting	<i>Coronidium gunnianum</i>	504655	Vulnerable	Dispersed	Habitat importance map	0.0000
Purple Diuris	<i>Diuris punctata</i>	501084	Vulnerable	Dispersed	Habitat importance map	0.0000
Dwarf Bitter-cress	<i>Rorippa eustylis</i>	502944	Rare	Dispersed	Habitat importance map	0.0000
Rosemary Grevillea	<i>Grevillea rosmarinifolia</i> subsp. <i>rosmarinifolia</i>	504066	Rare	Dispersed	Habitat importance map	0.0000
Late-flower Flax-lily	<i>Dianella tarda</i>	505085	Vulnerable	Dispersed	Habitat importance map	0.0000
Branching Groundsel	<i>Senecio cunninghamii</i> var. <i>cunninghamii</i>	503104	Rare	Dispersed	Habitat importance map	0.0000
Delicate Crane's-bill	<i>Geranium</i> sp. 6	505347	Vulnerable	Dispersed	Habitat importance map	0.0000
Slender Club-sedge	<i>Isolepis congrua</i>	501773	Vulnerable	Dispersed	Habitat importance map	0.0000
Floodplain Fireweed	<i>Senecio campylocarpus</i>	507136	Rare	Dispersed	Habitat importance map	0.0000
Fuzzy New Holland Daisy	<i>Vittadinia cuneata</i> var. <i>morrisii</i>	505060	Rare	Dispersed	Habitat importance map	0.0000
Silky Swainson-pea	<i>Swainsona sericea</i>	504946	Vulnerable	Dispersed	Habitat importance map	0.0000
Jericho Wire-grass	<i>Aristida jerichoensis</i> var. <i>subspinulifera</i>	504631	Endangered	Dispersed	Habitat importance map	0.0000
Woolly Wattle	<i>Acacia lanigera</i> var. <i>lanigera</i>	505093	Rare	Dispersed	Habitat importance map	0.0000

ADVERTISED PLAN

Dwarf Brooklime	<i>Gratiola pumilo</i>	503753	Rare	Dispersed	Habitat importance map	0.0000
Waterbush	<i>Myoporum montanum</i>	502240	Rare	Dispersed	Habitat importance map	0.0000
Lanky Buttons	<i>Leptorhynchus elongatus</i>	501941	Endangered	Dispersed	Habitat importance map	0.0000
Southern Swainson-pea	<i>Swainsona behriana</i>	504944	Rare	Dispersed	Habitat importance map	0.0000
Hairy Tails	<i>Ptilotus erubescens</i>	502825	Vulnerable	Dispersed	Habitat importance map	0.0000
Buloke	<i>Allocasuarina luehmannii</i>	500678	Endangered	Dispersed	Habitat importance map	0.0000
Brolga	<i>Grus rubicunda</i>	10177	Vulnerable	Dispersed	Habitat importance map	0.0000
Kamarooka Mallee	<i>Eucalyptus froggattii</i>	501279	Rare	Dispersed	Habitat importance map	0.0000
Spotted Emu-bush	<i>Eremophila maculata subsp. maculata</i>	501204	Rare	Dispersed	Habitat importance map	0.0000
Twiggy Sida	<i>Sida intricata</i>	503143	Vulnerable	Dispersed	Habitat importance map	0.0000
Bearded Dragon	<i>Pogona barbata</i>	12177	Vulnerable	Dispersed	Habitat importance map	0.0000
Grey Grass-tree	<i>Xanthorrhoea glauca subsp. angustifolia</i>	507229	Endangered	Dispersed	Habitat importance map	0.0000
Velvet Daisy-bush	<i>Olearia pannosa subsp. cardiophylla</i>	502317	Vulnerable	Dispersed	Habitat importance map	0.0000
Golden Cowslips	<i>Diuris behrii</i>	501061	Vulnerable	Dispersed	Habitat importance map	0.0000
Small Burr-grass	<i>Tragus australianus</i>	503418	Rare	Dispersed	Habitat importance map	0.0000
Grassland Velleia	<i>Velleia arguta</i>	503487	Rare	Dispersed	Habitat importance map	0.0000
Black Falcon	<i>Falco subniger</i>	10238	Vulnerable	Dispersed	Habitat importance map	0.0000
Australian Painted Snipe	<i>Rostratula australis</i>	10170	Critically endangered	Dispersed	Habitat importance map	0.0000
Clover Glycine	<i>Glycine latrobeana</i>	501456	Vulnerable	Dispersed	Habitat importance map	0.0000
Australian Little Bittern	<i>Ixobrychus dubius</i>	10195	Endangered	Dispersed	Habitat importance map	0.0000
Intermediate Egret	<i>Ardea intermedia</i>	10186	Endangered	Dispersed	Habitat importance map	0.0000
Eastern Great Egret	<i>Ardea modesta</i>	10187	Vulnerable	Dispersed	Habitat importance map	0.0000
Baillon's Crake	<i>Porzana pusilla palustris</i>	10050	Vulnerable	Dispersed	Habitat importance map	0.0000

Musk Duck	<i>Biziura lobata</i>	10217	Vulnerable	Dispersed	Habitat importance map	0.0000
Hardhead	<i>Aythya australis</i>	10215	Vulnerable	Dispersed	Habitat importance map	0.0000
Australasian Shoveler	<i>Anas rhynchos</i>	10212	Vulnerable	Dispersed	Habitat importance map	0.0000

Habitat group

- Highly localised habitat means there is 2000 hectares or less mapped habitat for the species
- Dispersed habitat means there is more than 2000 hectares of mapped habitat for the species

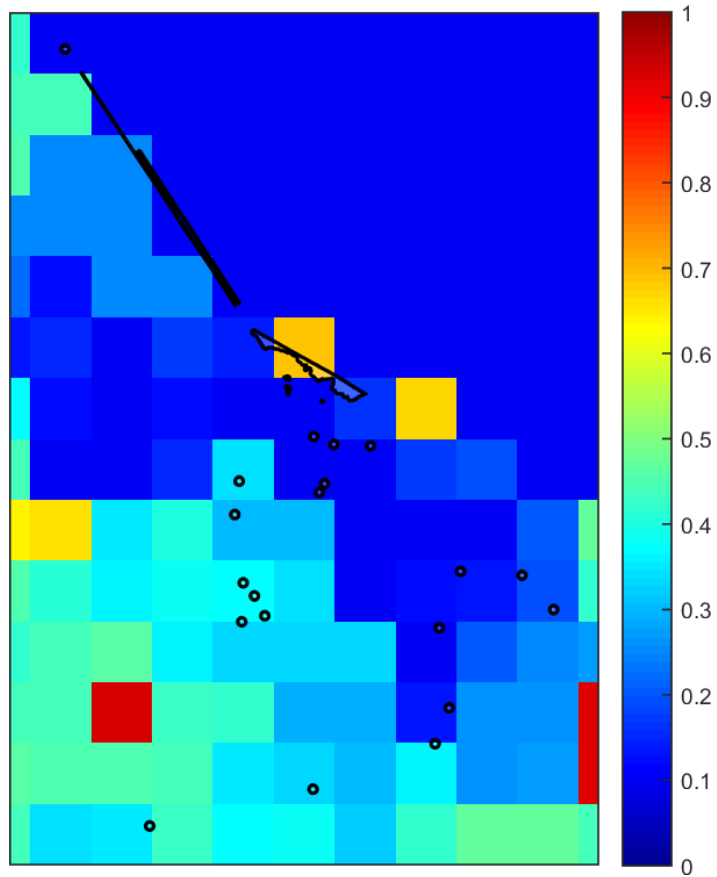
Habitat impacted

- Habitat importance maps are the maps defined in the Guidelines that include all the mapped habitat for a rare or threatened species
- Top ranking maps are the maps defined in the Guidelines that depict the important areas of a dispersed species habitat, developed from the highest habitat importance scores in dispersed species habitat maps and selected VBA records
- Selected VBA record is an area in Victoria that represents a large population, roosting or breeding site etc.

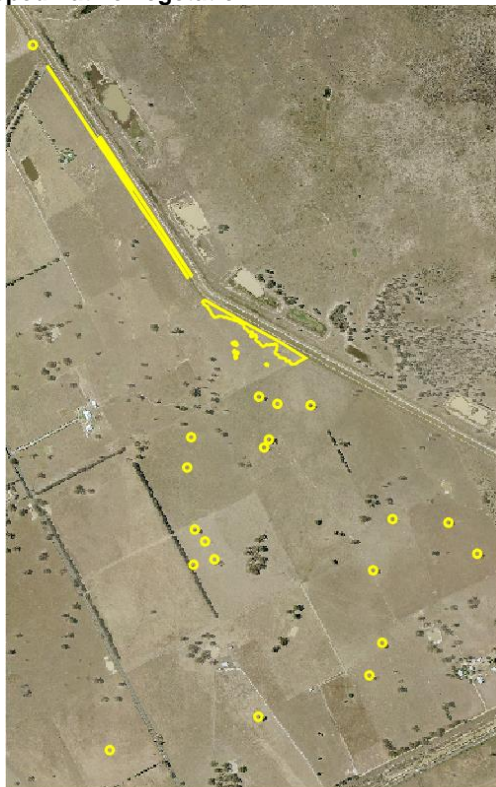
ADVERTISED PLAN

Appendix 3 – Images of mapped native vegetation

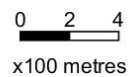
2. Strategic biodiversity values map



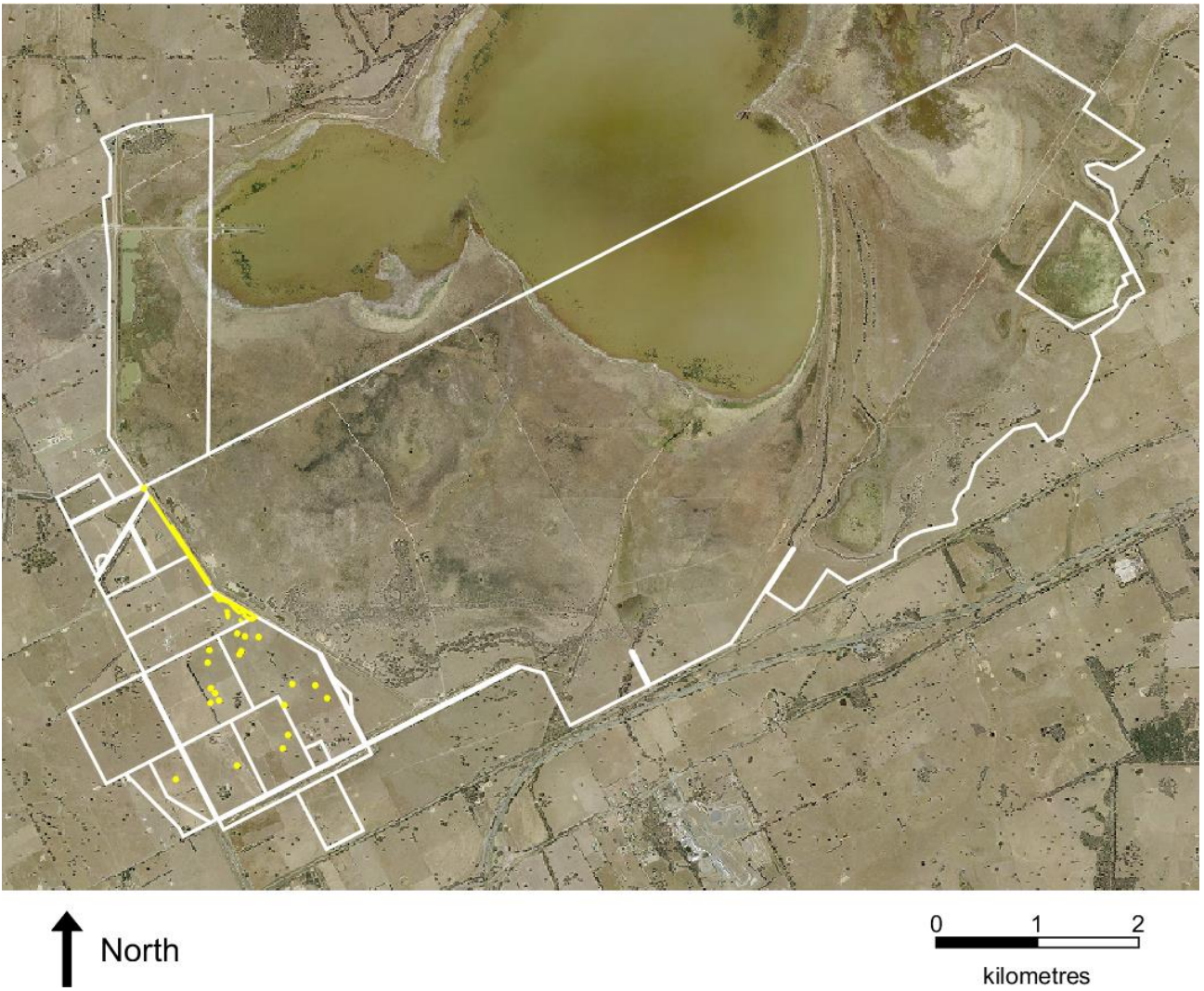
3. Aerial photograph showing mapped native vegetation



ADVERTISED PLAN



4. Map of the property in context



Yellow boundaries denote areas of proposed native vegetation removal.

ADVERTISED PLAN