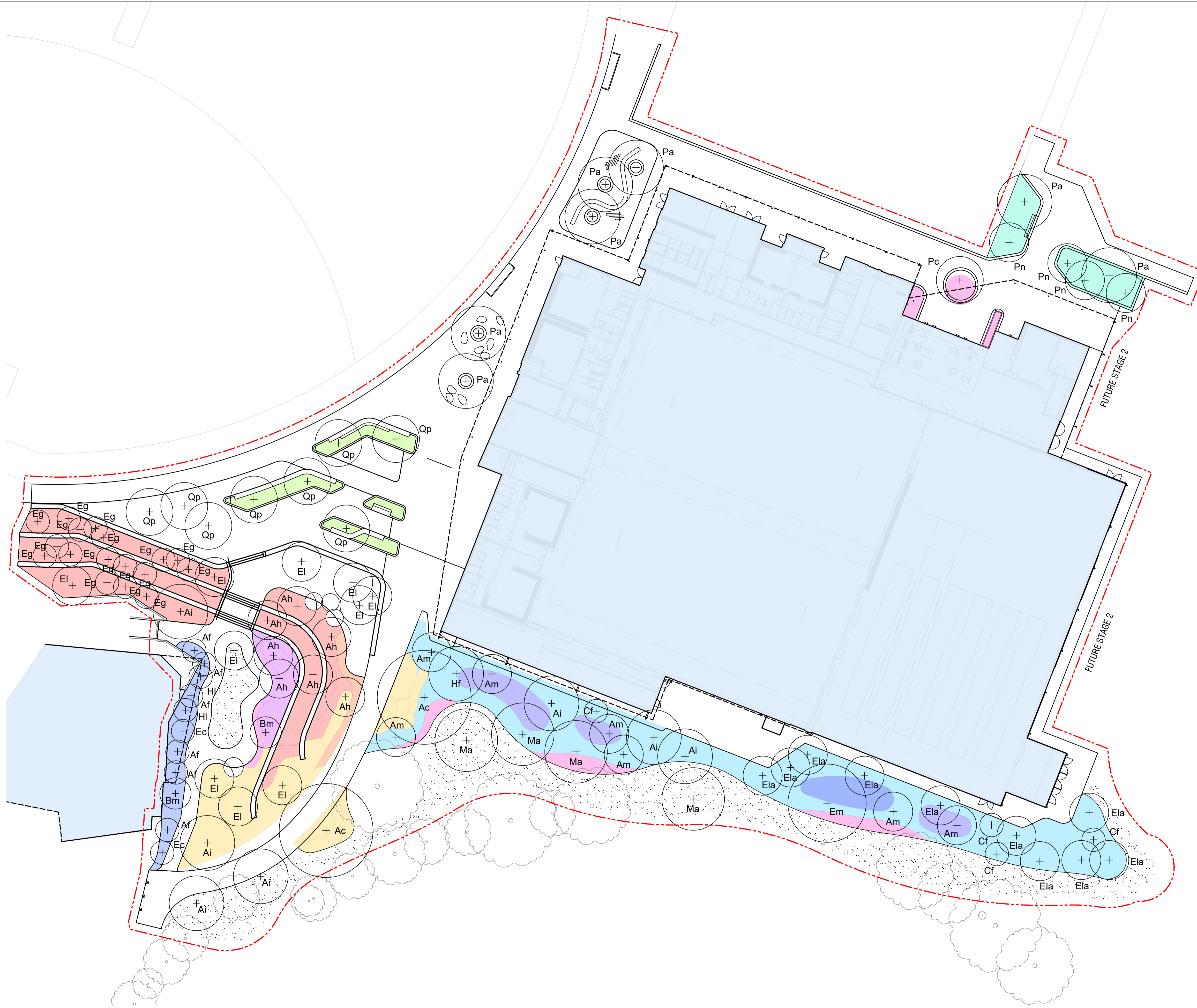


**LEGEND**

- EXTENT OF WORKS
- EXTENT OF ROOF
- TREES TO BE RETAINED
- PROPOSED TREE
- GARDEN BED MIX A  
4 plants/m2, Refer LD200
- GARDEN BED MIX B  
4 plants/m2, Refer LD200
- GARDEN BED MIX C  
4 plants/m2, Refer LD200
- GARDEN BED MIX D  
4 plants/m2, Refer LD200
- GARDEN BED MIX E  
4 plants/m2, Refer LD200
- GARDEN BED MIX F  
4 plants/m2, Refer LD200
- GARDEN BED MIX G  
2 plants/m2, Refer LD200
- GARDEN BED MIX H  
4 plants/m2, Refer LD200
- GARDEN BED MIX I  
2 plants/m2, Refer LD200
- TURF  
Refer Detail 07/LD901



**NOTES**

**spiire**

© Spiire Australia Pty Ltd All Rights Reserved  
This document is produced by Spiire Australia Pty Ltd solely for the benefit of and use by the client in accordance with the terms of the retainer. Spiire Australia Pty Ltd does not and shall not assume any responsibility or liability whatsoever to any third party arising out of any use or reliance by third party on the content of this document.

**16 BRIDGE STREET BENDIGO  
VICTORIA 3550 AUSTRALIA T 61 3 5448 2500**  
www.spiire.com.au ABN 55 050 029 635

**PRELIMINARY**

REV	DESCRIPTION	APP	DATE
D	ISSUED TO CLIENT	MS	12/06/20
C	PRELIMINARY ISSUE	GF	15/05/20
B	PRELIMINARY ISSUE	MS	08/05/20
A	PRELIMINARY ISSUE	GF	15/04/20

**CATHERINE MCAULEY COLLEGE  
JOINT USE HUB, STAGE 1**

**DETAILED DESIGN**  
PLANTING PLANS - SHEET 1  
SHEET 6 OF 13  
CITY OF GREATER BENDIGO  
CLARKE HOPKINS CLARKE ARCHITECTS

N

MGA 94 ZONE

1:250 SCALE @ A1

DESIGNED	DRAWN	CHECKED	APPROVED
GF	GF	MS	SE
DATE	DRG NO.	REV	
08/05/2020	306770LD700	D	

file name: 306770LD700.dwg, layout name: LD700, plotted by: Corinna Espinell, file location: I:\projects\Bendigo\306770\landscapes\ACAD\plot date: 12/08/2020 5:24 PM, Sheet 6 of 13 Sheets

**NOTES**

PLANTING SCHEDULE						
TREES						
CODE	BOTANICAL NAME	COMMON NAME	QTY	DENSITY	INSTALL SIZE	MATURE SIZE (h x w)
Ac	<i>Angophora costata</i>	Smooth Bark Apple	2	as shown	min. 1.8m tall, 45L	16 x 12
Ah	<i>Angophora hispida</i>	Dwarf Apple Myrtle	7	as shown	min. 1.8m tall, 45L	6 x 5
Ai	<i>Acacia implexa</i>	Lightwood	4	as shown	min. 1.8m tall, 45L	8 x 7
Am	<i>Acacia melanoxylon</i>	Blackwood	7	as shown	min. 1.8m tall, 45L	13 x 5
Bm	<i>Banksia marginata</i>	Silver Banksia	1	as shown	min. 1.8m tall, 45L	5 x 4
Cf	<i>Corymbia ficifolia</i> 'Summer Beauty'	Dwarf Flowering Gum	4	as shown	min. 1.8m tall, 45L	6 x 3
Ei	<i>Eucalyptus leucoxylon</i> 'Euky'	Euky Dwarf	5	as shown	min. 1.8m tall, 45L	6 x 5
Ela	<i>Eucalyptus landsdowneana</i>	Crimson Mallee Box	10	as shown	min. 1.8m tall, 45L	6 x 5
Em	<i>Eucalyptus melliodora</i>	Yellow Box	1	as shown	min. 1.8m tall, 45L	15 x 10
Hf	<i>Hymenosporum flavum</i>	Native Frangipani	1	as shown	min. 1.8m tall, 45L	15 x 7
Ma	<i>Melia azedarach</i> 'Elite'	White Cedar	4	as shown	min. 1.8m tall, 45L	10 x 8
Qp	<i>Quercus palustris</i>	Pin Oak	2	as shown	min. 1.8m tall, 45L	7 x 6
<b>Total</b>			<b>48</b>			

GARDEN BEDS						
MIX A						
Total area -						
BOTANICAL NAME	COMMON NAME	PERCENTAGE OF MIX	QTY	DENSITY (m <sup>2</sup> )	INSTALL SIZE	
<i>Acacia acinacae</i>	Gold Dust Wattle	3%	0	1	15cm pot	
<i>Acacia howittii</i>	Sticky Wattle	2%	0	1	15cm pot	
<i>Acacia glaucoptera</i>	Clay Wattle	2%	0	2	15cm pot	
<i>Anigozanthos</i> 'Big Red'	Kangaroo Paw	2%	0	2	15cm pot	
<i>Anigozanthos flavidus</i> (yellow)	Kangaroo Paw	2%	0	2	15cm pot	
<i>Carpobrotus rossii</i>	Native pig-face	3%	0	4	15cm pot	
<i>Correa</i> 'Dusky Bells'	Native Fuschia	8%	0	3	15cm pot	
<i>Correa</i> 'Little Cate'	Native Fuschia	8%	0	2	15cm pot	
<i>Darwinia citriodora</i>	Lemon-scented Darwinia	2%	0	2	15cm pot	
<i>Doryanthes excelsa</i>	Gynea Lily	5%	0	2	15cm pot	
<i>Grevillea</i> 'Forest Rambler'	Grevillea Forest Rambler	10%	0	2	15cm pot	
<i>Grevillea</i> 'Robyn Gordon'	Grevillea Robyn Gordon	10%	0	2	15cm pot	
<i>Leptospermum</i> 'Mozzie Blocker'	Tea Tree	3%	0	2	15cm pot	
<i>Melaleuca tymifolia</i>	Honey Myrtle	2%	0	2	15cm pot	
<i>Myoporum parvifolium</i> (broad)	Creeping Boobialla	5%	0	4	15cm pot	
<i>Poa labillardieri</i>	Common Tussock-grass	20%	0	4	15cm pot	
<i>Spyridium parvifolium</i>	Dusty Miller	10%	0	1	15cm pot	
<i>Thryptomene saxicola</i> 'FC Payne'	Payne's Thryptomene	3%	0	2	15cm pot	
<b>Total</b>			<b>0</b>			
Arrangement: Plant in drifts of 6-32 of each species, approx. parallel with the face of the building. Generally, low growing plants at the front adjacent play areas.						
MIX B						
Total area -						
BOTANICAL NAME	COMMON NAME	PERCENTAGE OF MIX	QTY	DENSITY (m <sup>2</sup> )	INSTALL SIZE	
<i>Austrostipa egalantissima</i>	Soft Feather-grass	35%	0	4	15cm pot	
<i>Austrostipa ramoisissima</i>	Feather Grass	35%	0	3	15cm pot	
<i>Perovskia atriplicifolia</i>	Russian Sage	30%	0	3	15cm pot	
<b>Total</b>			<b>0</b>			
Arrangement: Plant in rows of 6-15 of each species. Refer detail.						

**spiire**

© Spiire Australia Pty Ltd All Rights Reserved  
This document is produced by Spiire Australia Pty Ltd solely for the benefit of and use by the client in accordance with the terms of the retainer. Spiire Australia Pty Ltd does not and shall not assume any responsibility or liability whatsoever to any third party arising out of any use or reliance by third party on the content of this document.

**16 BRIDGE STREET BENDIGO  
VICTORIA 3550 AUSTRALIA T 61 3 5448 2500**  
www.spiire.com.au ABN 55 050 029 635

**PRELIMINARY**

B	ISSUED TO CLIENT	MS	12/06/20
A	PRELIMINARY ISSUE	MS	08/05/20
REV	DESCRIPTION	APP	DATE

**CATHERINE MCAULEY COLLEGE  
JOINT USE HUB, STAGE 1**

**DETAILED DESIGN**  
SCHEDULES - SHEET 1  
SHEET 2 OF 13  
CITY OF GREATER BENDIGO  
CLARKE HOPKINS CLARKE ARCHITECTS

DESIGNED	DRAWN	CHECKED	APPROVED
GF	GF	MS	SE
DATE	DRG NO.	REV	
08/05/2020	306770LD200	B	

### MIX C

Total area - 61m2

BOTANICAL NAME	COMMON NAME	PERCENTAGE OF MIX	QTY	DENSITY (m²)	INSTALL SIZE
<i>Callistemon</i> 'All Aglow'	Bottlebrush	30%	0	1	15cm pot
<i>Callistemon</i> 'Kings Park Special'	Bottlebrush	40%	0	1	15cm pot
<i>Callistemon</i> 'Western Glory'	Bottlebrush	30%	0	1	15cm pot
<b>Total</b>			<b>0</b>		

Arrangement: Grevilleas to be located on the edges, Callistemons in the centre.

### MIX D

Total area -

BOTANICAL NAME	COMMON NAME	PERCENTAGE OF MIX	QTY	DENSITY (m²)	INSTALL SIZE
<i>Correa</i> 'Lime Chimes'	Correa	30%	0	6	15cm pot
<i>Myoporum parvifolium</i>	Creeping Boobialla	30%	0	4	15cm pot
<i>Scaevola</i> 'Blue Ribbon'	Fan Flower	40%	0	6	15cm pot
<b>Total</b>			<b>0</b>		

Arrangement: Plant in drifts of 12-32 of each species.

### MIX E

Total area -

BOTANICAL NAME	COMMON NAME	PERCENTAGE OF MIX	QTY	DENSITY (m²)	INSTALL SIZE
<i>Correa</i> 'Little Cate'	Native Fuschia	20%	0	4	15cm pot
<i>Dicondra</i> 'Silver Falls'	Kidney Weed	10%	0	4	15cm pot
<i>Poa labillardieri</i>	Common Tussock-grass	35%	0	3	15cm pot
<i>Scaevola</i> 'Blue Ribbon'	Fan Flower	25%	0	6	15cm pot
<i>Wahlenbergia stricta</i>	Native Bluebells	10%	0	4	15cm pot
<b>Total</b>			<b>0</b>		

Arrangement: Plant in drifts of 3-15 of each species. Generally, larger growing species to be located at the back of the garden bed and groundcovers beside the top of retaining walls.

### MIX F

Total area -

BOTANICAL NAME	COMMON NAME	PERCENTAGE OF MIX	QTY	DENSITY (m²)	INSTALL SIZE
<i>Austrostipa egalantissima</i>	Soft Feather-grass	30%	0	3	15cm pot
<i>Austrostipa ramoisissima</i>	Feather Grass	20%	0	4	15cm pot
<i>Correa</i> 'Little Cate'	Native Fuschia	5%	0	4	15cm pot
<i>Correa</i> 'Dinner Bells'	Native Fuschia	5%	0	4	15cm pot
<i>Grevillea</i> 'Peaches and Cream'	Grevillea Peaches and Cream	10%	0	2	15cm pot
<i>Philotheca myoporoides</i>	Long-leaf Wax-flower	20%	0	2	15cm pot
<i>Poa labillardieri</i>	Common Tussock-grass	10%	0	3	15cm pot
<b>Total</b>			<b>0</b>		

Arrangement: Plant in drifts of 3-15 of each species. Generally, larger growing species to be located at the back of the garden bed and groundcovers beside paths.

### MIX G

Total area -

BOTANICAL NAME	COMMON NAME	PERCENTAGE OF MIX	QTY	DENSITY (m²)	INSTALL SIZE
<i>Banksia</i> 'Mini Marg'	Dwarf Silver Banksia	10%	0	1	15cm pot
<i>Callistemon</i> 'Western Glory'	Bottlebrush	5%	0	1	15cm pot
<i>Correa</i> 'Dinner Bells'	Native Fuschia	5%	0	4	15cm pot
<i>Correa</i> 'Dusky Bells'	Native Fuschia	10%	0	4	15cm pot
<i>Correa</i> 'Ivory Beacon'	Rock Correa	8%	0	4	15cm pot
<i>Correa</i> 'Lime Chimes'	Rock Correa	5%	0	2	15cm pot
<i>Correa</i> 'Little Cate'	Native Fuschia	2%	0	2	15cm pot
<i>Grevillea</i> 'Robyn Gordon'	Grevillea Robyn Gordon	10%	0	2	15cm pot
<i>Myoporum parvifolium</i> (broad)	Creeping Boobialla	5%	0	2	15cm pot
<i>Philotheca myoporoides</i> 'Winter Rouge'	Long-leaf Wax-flower	10%	0	4	15cm pot
<i>Poa labillardieri</i>	Common Tussock-grass	10%	0	4	15cm pot
<i>Scaevola</i> 'Blue Ribbon'	Fan Flower	5%	0	1	15cm pot
<i>Wahlenbergia stricta</i>	Native Bluebells	5%	0	2	15cm pot
<i>Westringia</i> 'Glabra Cadabra'	Native Rosemary	10%	0	6	15cm pot
<b>Total</b>			<b>0</b>		

Arrangement: Plant in drifts of 6-32 of each species. Generally, low growing plants at the front.

### NOTES

# spiire

© Spiire Australia Pty Ltd All Rights Reserved  
This document is produced by Spiire Australia Pty Ltd solely for the benefit of and use by the client in accordance with the terms of the retainer. Spiire Australia Pty Ltd does not and shall not assume any responsibility or liability whatsoever to any third party arising out of any use or reliance by third party on the content of this document.

16 BRIDGE STREET BENDIGO  
VICTORIA 3550 AUSTRALIA T 61 3 5448 2500  
www.spiire.com.au ABN 55 050 029 635

## PRELIMINARY

B	ISSUED TO CLIENT	MS	12/06/20
A	PRELIMINARY ISSUE	MS	08/05/20
REV	DESCRIPTION	APP	DATE

### CATHERINE MCAULEY COLLEGE JOINT USE HUB, STAGE 1

#### DETAILED DESIGN

SCHEDULES - SHEET 2

SHEET 3 OF 13

CITY OF GREATER BENDIGO

CLARKE HOPKINS CLARKE ARCHITECTS

DESIGNED	DRAWN	CHECKED	APPROVED
GF	GF	MS	SE
DATE	DRG NO.	REV	
08/05/2020	306770LD201	B	

**NOTES**

<b>MIX H</b>					
Total area -					
BOTANICAL NAME	COMMON NAME	PERCENTAGE OF MIX	QTY	DENSITY (m <sup>2</sup> )	INSTALL SIZE
<i>Correa</i> 'Dusky Bells'	Native Fuschia	25%	0	4	15cm pot
<i>Correa</i> 'Lime Chimes'	Rock Correa	25%	0	2	15cm pot
<i>Correa</i> 'Little Cate'	Native Fuschia	25%	0	2	15cm pot
<i>Myoporum parvifolium</i> (broad)	Creeping Boobialla	25%	0	2	15cm pot
<b>Total</b>			<b>0</b>		

Arrangement: Plant in drifts of 6-32 of each species. Generally, low growing plants at the front.

<b>MIX I</b>					
Total area -					
BOTANICAL NAME	COMMON NAME	PERCENTAGE OF MIX	QTY	DENSITY (m <sup>2</sup> )	INSTALL SIZE
<i>Agastache rugosa</i>	<i>Korean mint</i>	8%	0	4	15cm pot
<i>Austrostipa egalantissima</i>	Soft Feather-grass	18%	0	2	15cm pot
<i>Dicondra repens</i>	Dicondra	6%	0	4	15cm pot
<i>Salvia greggii</i> (purple tones)	Sage	12%	0	2	15cm pot
<i>Salvia</i> 'Waverly'	Waverly Sage	12%	0	1	15cm pot
<i>Stachys byzantina</i>	Lamb's ear	5%	0	4	15cm pot
<i>Nepeta</i> 'Walkers Blue'	Catmint	12%	0	2	15cm pot
<i>Perovskia atriplicifolia</i>	Russian Sage	12%	0	2	15cm pot
<i>Poa labillardieri</i>	Common Tussock-grass	15%	0	4	15cm pot
<b>Total</b>			<b>0</b>		

Arrangement: Plant in drifts of 3-15 of each species. Generally, larger growing species to be located at the centre or rear of the garden bed. Dicondra to face concrete path.



© Spiire Australia Pty Ltd All Rights Reserved  
 This document is produced by Spiire Australia Pty Ltd solely for the benefit of and use by the client in accordance with the terms of the retainer. Spiire Australia Pty Ltd does not and shall not assume any responsibility or liability whatsoever to any third party arising out of any use or reliance by third party on the content of this document.

**16 BRIDGE STREET BENDIGO**  
**VICTORIA 3550 AUSTRALIA T 61 3 5448 2500**  
 www.spiire.com.au ABN 55 050 029 635

**PRELIMINARY**


A	ISSUED TO CLIENT	MS	12/06/20
REV	DESCRIPTION	APP	DATE

**CATHERINE MCAULEY COLLEGE**  
**JOINT USE HUB, STAGE 1**

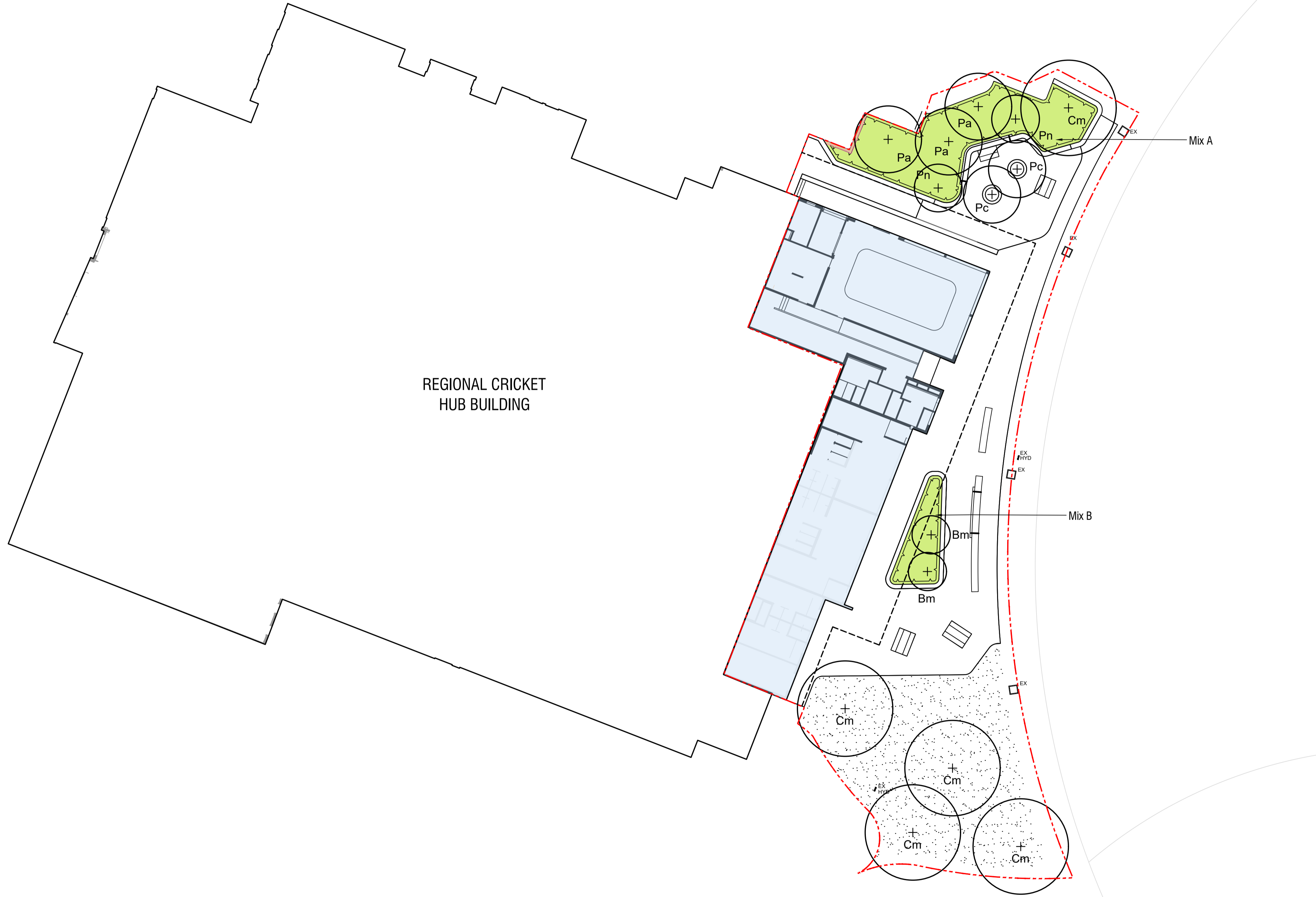
**DETAILED DESIGN**  
**SCHEDULES - SHEET 3**  
**SHEET 4 OF 13**  
**CITY OF GREATER BENDIGO**  
**CLARKE HOPKINS CLARKE ARCHITECTS**

DESIGNED	DRAWN	CHECKED	APPROVED
DATE	DRG NO.	REV	
	<b>306770LD202</b>	<b>A</b>	

file name: 306770LD202.dwg, layout name: 1.DWG, plotted by: Corinna Farrell, file location: G:\projects\Bendigo\306770\landscapes\ACAD\plot date: 12/06/2020 5:24 PM, Sheet 4 of 13 Sheets

**LEGEND**

- - - - EXTENT OF WORKS
- - - - EXTENT OF ROOF
- +  
Cc PROPOSED TREE
- GARDEN BED
- TURF  
Refer Detail



**NOTES**



© Spiire Australia Pty Ltd All Rights Reserved  
 This document is produced by Spiire Australia Pty Ltd solely for the benefit of and use by the client in accordance with the terms of the retainer. Spiire Australia Pty Ltd does not and shall not assume any responsibility or liability whatsoever to any third party arising out of any use or reliance by third party on the content of this document.

**16 BRIDGE STREET BENDIGO**  
**VICTORIA 3550 AUSTRALIA T 61 3 5448 2500**  
 www.spiire.com.au ABN 55 050 029 635

**PRELIMINARY**


A	ISSUED TO CLIENT	MS	12/06/20
REV	DESCRIPTION	APP	DATE

**CATHERINE MCAULEY COLLEGE**  
**JOINT USE HUB, STAGE 2**

**DETAILED DESIGN**  
 PLANTING PLANS - SHEET 1  
 SHEET 4 OF 8  
 CITY OF GREATER BENDIGO  
 CLARKE HOPKINS CLARKE ARCHITECTS

MGA 94 ZONE

1:250 SCALE @ A1

DESIGNED	DRAWN	CHECKED	APPROVED
GF	GF		MS
DATE	DRG NO.	REV	
08/05/2020	307729LD700	A	

file name: 307729LD700.dwg, project name: 10700, plotted by: Corinna Espinell, file location: G:\projects\Bendigo\10700\307729\landscapes\ACAD\plot date: 12/06/2020 5:52 PM Sheet 4 of 8 Sheets

**NOTES**

PLANTING SCHEDULE						
TREES						
CODE	BOTANICAL NAME	COMMON NAME	QTY	DENSITY	INSTALL SIZE	MATURE SIZE (h x w)
Bm	<i>Banksia marginata</i>	Silver Banksia	2	as shown	min. 1.8m tall, 45L	5 x 4
Cm	<i>Corymbia maculata</i>	Spotted Gum	5	as shown	min. 1.8m tall, 45L	30 x 10
Pa	<i>Pyrus calleryana Aristocrat</i>	Callery Pear	3	as shown	min. 1.8m tall, 45L	8 x 7
Pc	<i>Pistacia chinensis</i>	Chinese Pistacio	2	as shown	min. 1.8m tall, 45L	8 x 6
Pn	<i>Pyrus Nivalis</i>	Snow Pear	2	as shown	min. 1.8m tall, 45L	4 x 5
<b>Total</b>			<b>14</b>			

GARDEN BEDS					
MIX A					
Total area -					
BOTANICAL NAME	COMMON NAME	PERCENTAGE OF MIX	QTY	DENSITY (m <sup>2</sup> )	INSTALL SIZE
<i>Agastache rugosa</i>	<i>Korean mint</i>	8%	0	4	15cm pot
<i>Austrostipa egalantissima</i>	Soft Feather-grass	18%	0	2	15cm pot
<i>Dicondra repens</i>	Dicondra	6%	0	4	15cm pot
<i>Salvia greggii (purple tones)</i>	Sage	12%	0	2	15cm pot
<i>Salvia 'Waverly'</i>	Waverly Sage	12%	0	1	15cm pot
<i>Stachys byzantina</i>	Lamb's ear	5%	0	4	15cm pot
<i>Nepeta 'Walkers Blue'</i>	Catmint	12%	0	2	15cm pot
<i>Perovskia atriplicifolia</i>	Russian Sage	12%	0	2	15cm pot
<i>Poa labillardieri</i>	Common Tussock-grass	15%	0	4	15cm pot
<b>Total</b>			<b>0</b>		
Arrangement: Plant in drifts of 3-15 of each species. Generally, larger growing species to be located at the centre or rear of the garden bed. Dicondra to					

MIX B					
Total area -					
BOTANICAL NAME	COMMON NAME	PERCENTAGE OF MIX	QTY	DENSITY (m <sup>2</sup> )	INSTALL SIZE
<i>Correa 'Little Cate'</i>	Native Fuschia	20%	0	4	15cm pot
<i>Dicondra 'Silver Falls'</i>	Kidney Weed	10%	0	4	15cm pot
<i>Poa labillardieri</i>	Common Tussock-grass	35%	0	3	15cm pot
<i>Scaevola 'Blue Ribbon'</i>	Fan Flower	25%	0	6	15cm pot
<i>Wahlenbergia stricta</i>	Native Bluebells	10%	0	4	15cm pot
<b>Total</b>			<b>0</b>		
Arrangement: Plant in drifts of 3-15 of each species. Generally, larger growing species to be located at the back of the garden bed and groundcovers					



© Spiire Australia Pty Ltd All Rights Reserved  
 This document is produced by Spiire Australia Pty Ltd solely for the benefit of and use by the client in accordance with the terms of the retainer. Spiire Australia Pty Ltd does not and shall not assume any responsibility or liability whatsoever to any third party arising out of any use or reliance by third party on the content of this document.

**16 BRIDGE STREET BENDIGO**  
**VICTORIA 3550 AUSTRALIA T 61 3 5448 2500**  
 www.spiire.com.au ABN 55 050 029 635

**PRELIMINARY**


A	ISSUED TO CLIENT	MS	12/06/20
REV	DESCRIPTION	APP	DATE

**CATHERINE MCAULEY COLLEGE**  
**JOINT USE HUB, STAGE 2**

**DETAILED DESIGN**  
 SCHEDULES - SHEET 1  
 SHEET 2 OF 8  
 CITY OF GREATER BENDIGO  
 CLARKE HOPKINS CLARKE ARCHITECTS

DESIGNED	DRAWN	CHECKED	APPROVED
GF	GF		MS
DATE	DRG NO.	REV	
08/05/2020	307729LD200	A	

file name: 307729LD200.dwg, layout: name\_1.DWG, plotted by: Corinna Farrell, file location: \\spire-bendigo\data\307729\landscapes\ACAD\plot date: 12/06/2020 5:51 PM, Sheet 2 of 8 Sheets