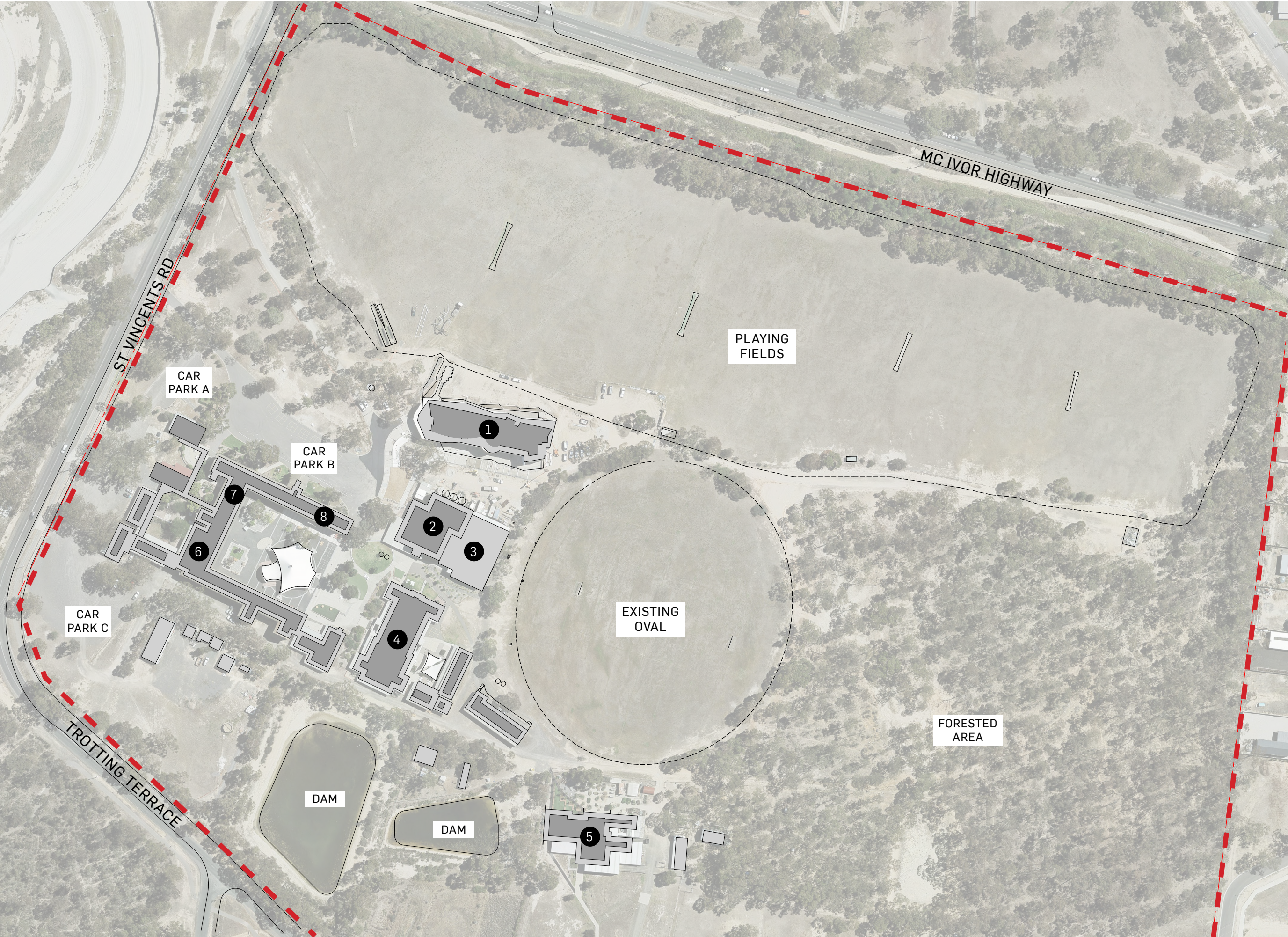




- Legend
- School Location
  - Community Facility
  - Surrounding Schools
  - Bus Stop
  - Land Use Zoning

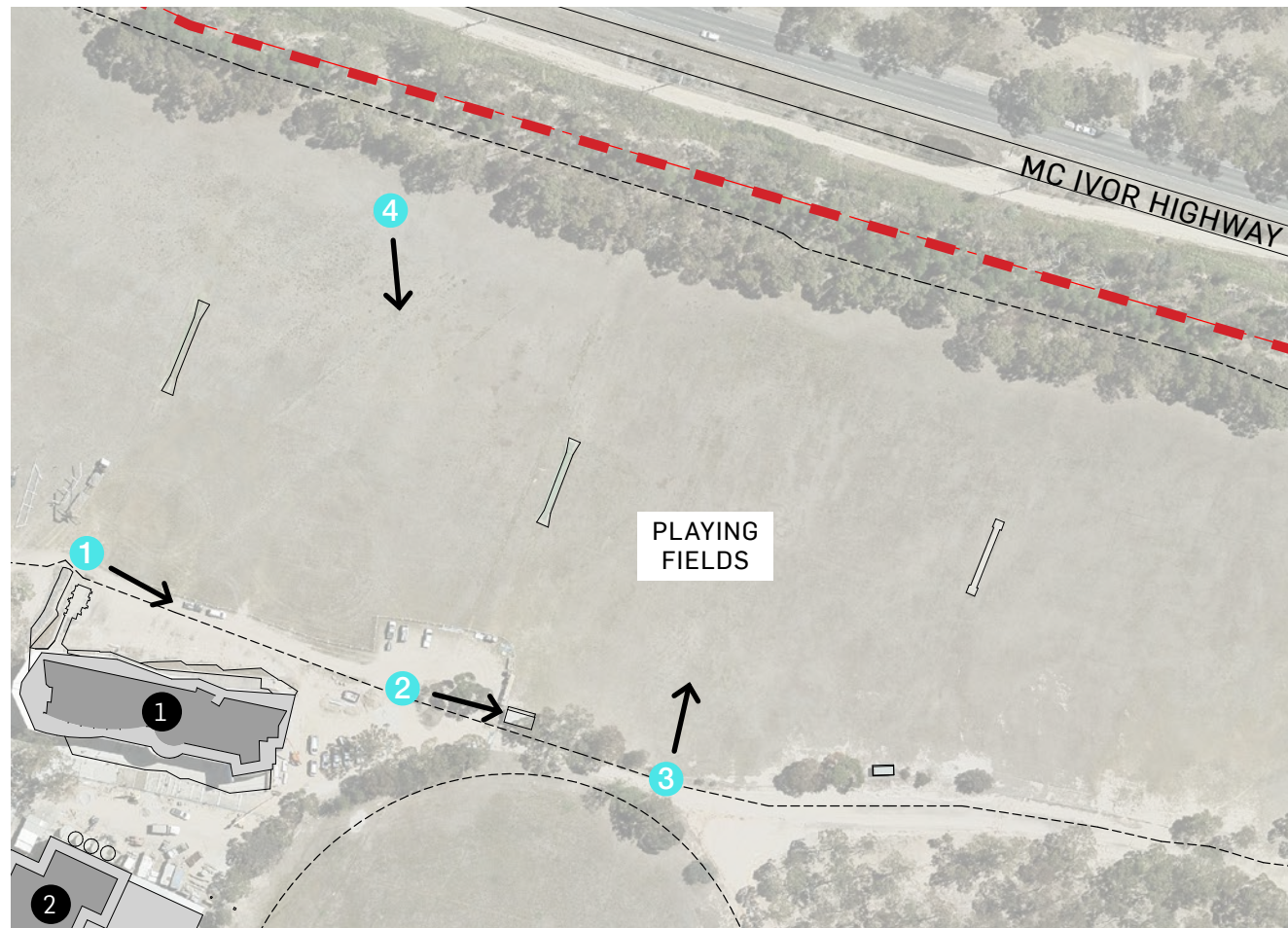




Legend

- 1 Learning Building
- 2 Gym
- 3 Covered Netball Courts
- 4 Science and Tech Labs
- 5 Trade Training
- 6 Library
- 7 Food Tech
- 8 Administration





**Existing Hub building**  
This building is in excellent condition. Construction has been recently completed.



The existing shed is in average condition. It is nominated to be removed because its location conflicts with the proposed location of the new building.

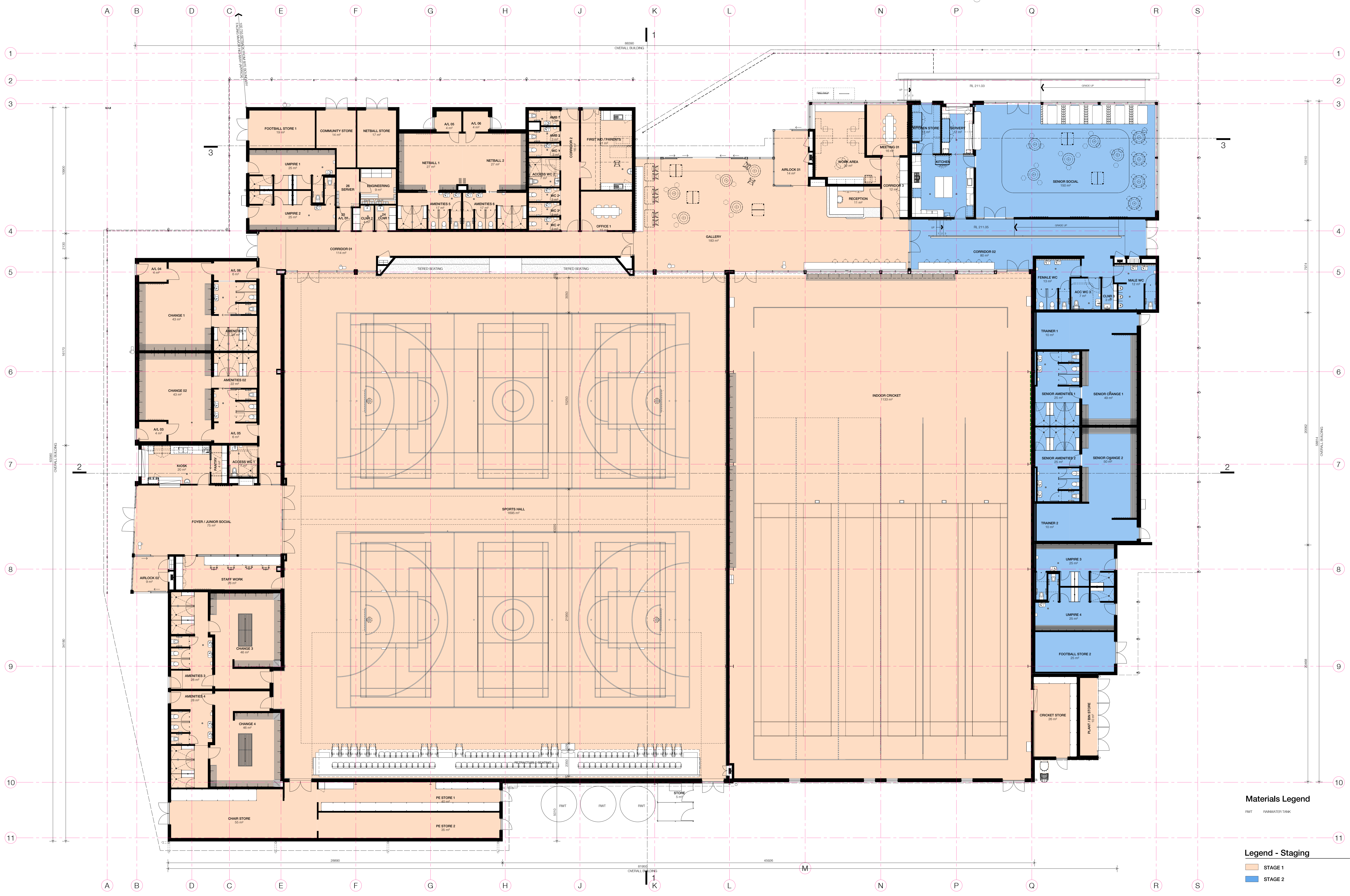


The area of the proposed works is currently utilised as a sporting oval. Minimal demolition work will be required.



The area of the proposed works is currently utilised as a sporting oval. Minimal demolition work will be required.





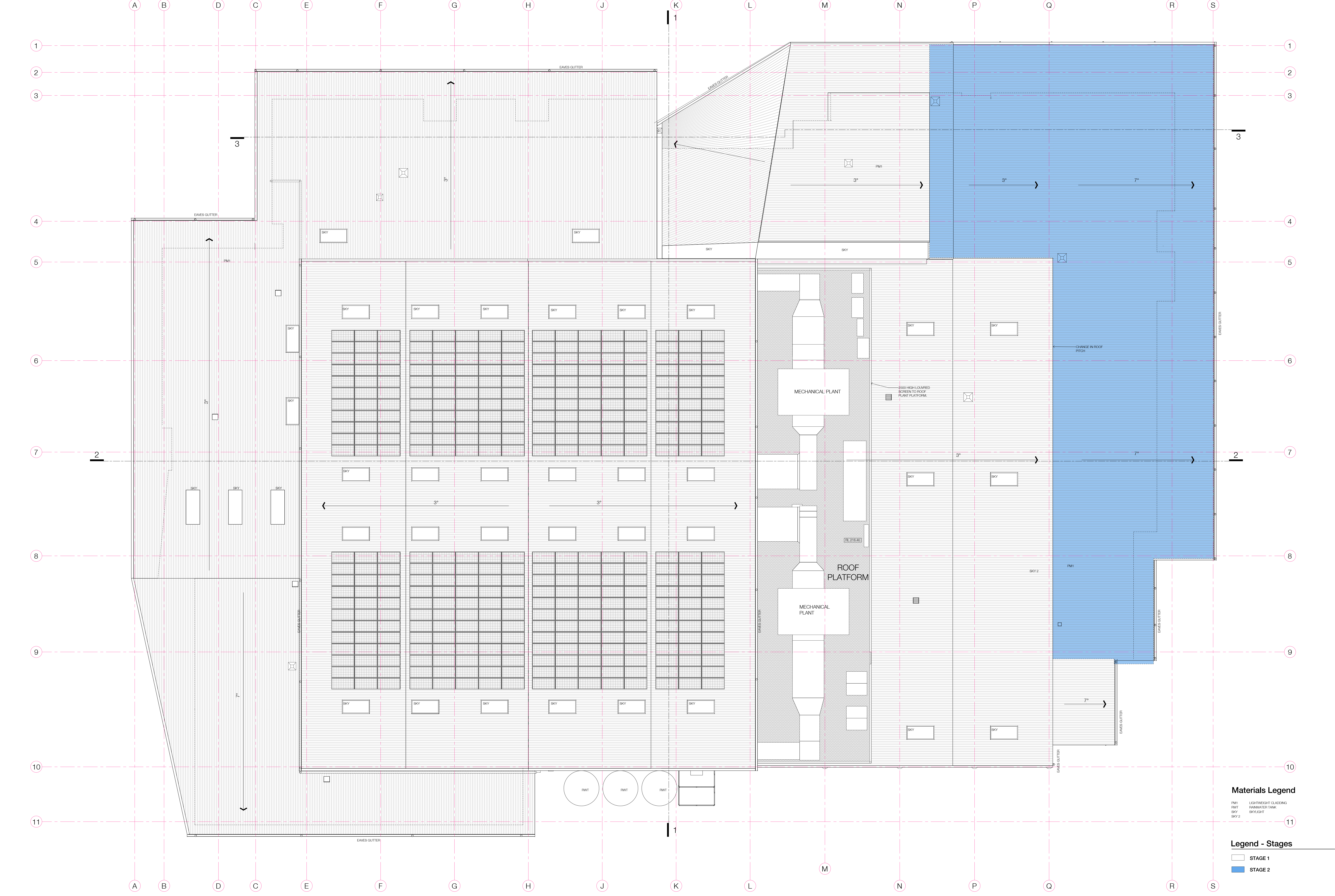
Materials Legend

RWT RAINWATER TANK

Legend - Staging

STAGE 1  
STAGE 2





Materials Legend

- PM1 LIGHTWEIGHT CLADDING
- RWT RAINWATER TANK
- SKY SKYLIGHT
- SKY 2

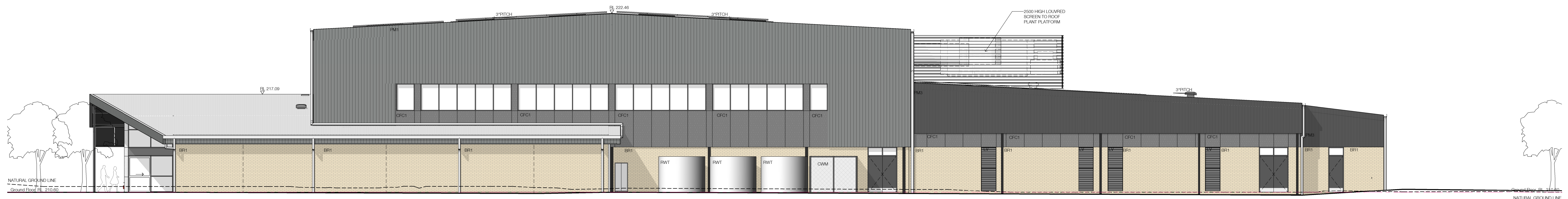
Legend - Stages

- STAGE 1
- STAGE 2

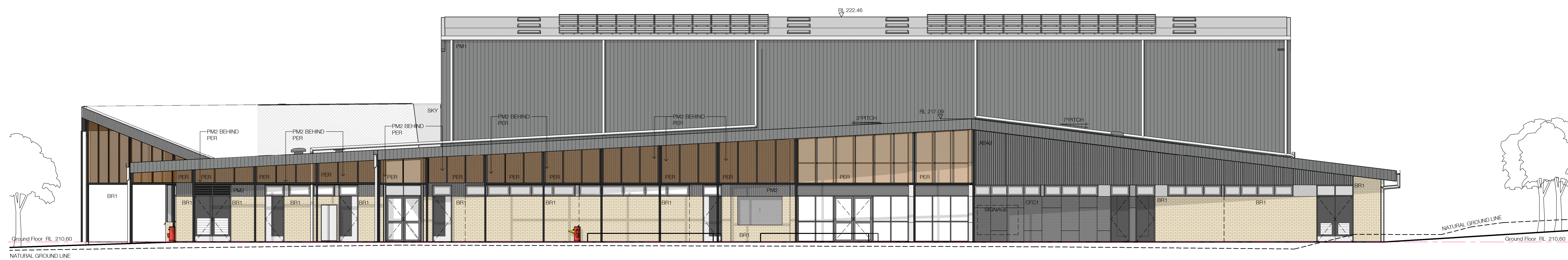




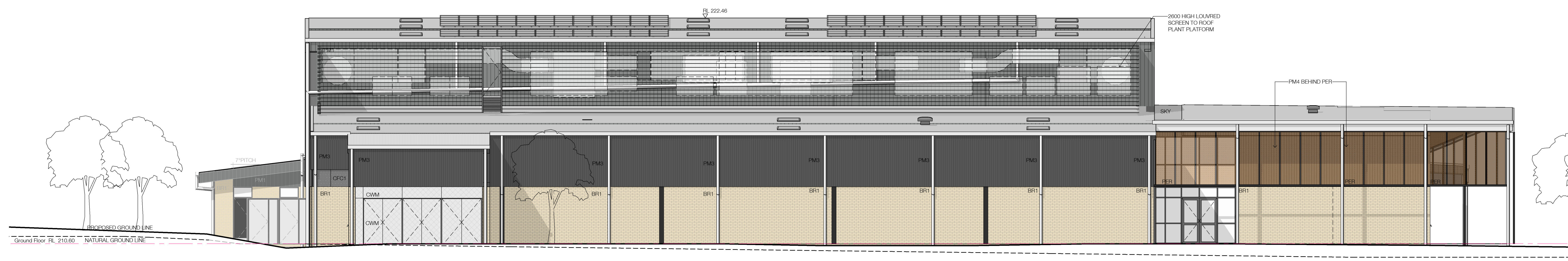
2 North Elevation - Stage 1  
Scale 1 : 100



3 South Elevation - Stage 1  
Scale 1 : 100



4 West Elevation - Stage 1  
Scale 1 : 100



1 East Elevation - Stage 1  
Scale 1 : 100

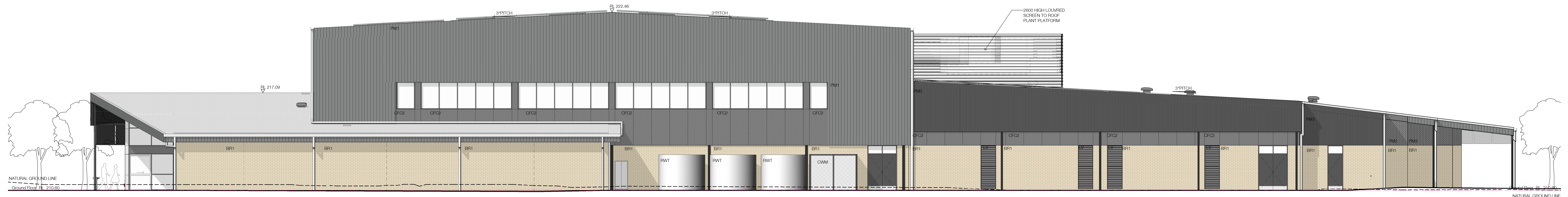
#### Materials Legend

ABW2	ALUMINUM TIMBER LOOK BATTENS - TYPE 2
BR1	BRICKWORK - TYPE 1
CF1	LIGHTWEIGHT CLADDING
CWM	CHANNED MESH
LV	LOUVER-FRAME
PER	PERFORATED METAL
PM1	LIGHTWEIGHT CLADDING
PM2	LIGHTWEIGHT CLADDING
PM3	LIGHTWEIGHT CLADDING
RWT	RAINWATER TANK
SKY	SKYLIGHT

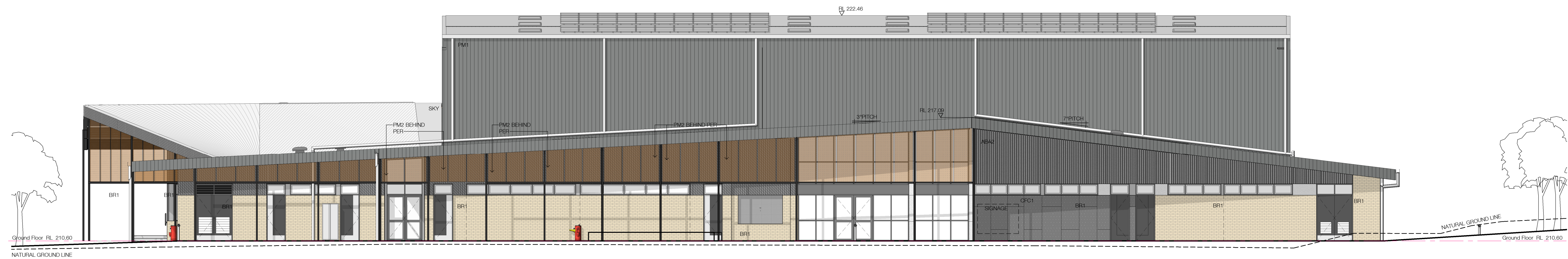




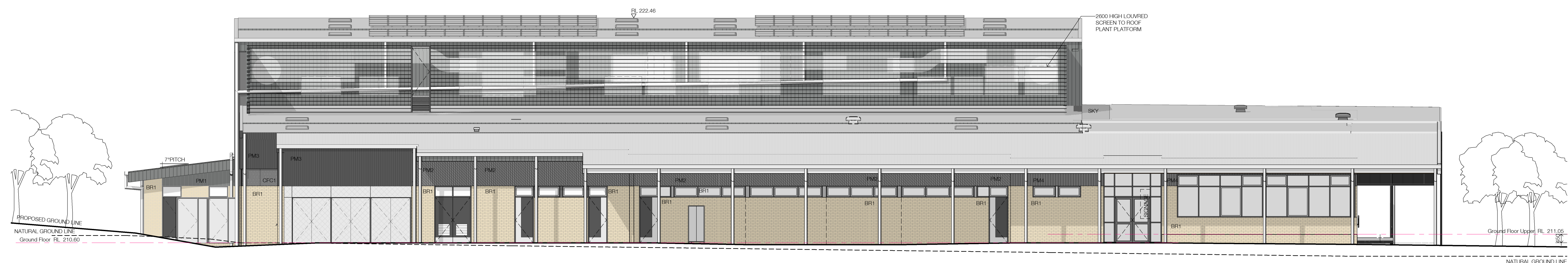
1 North Elevation - Stage 2  
Scale 1 : 100



2 South Elevation - Stage 2  
Scale 1 : 100



3 West Elevation - Stage 2  
Scale 1 : 100

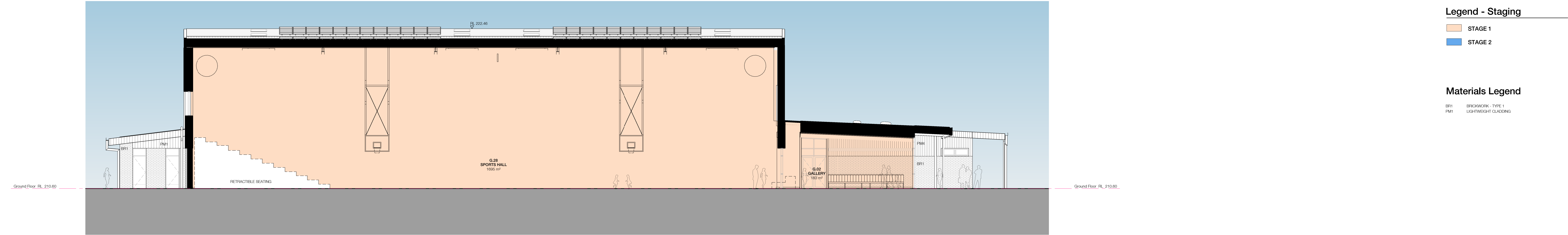


4 East Elevation - Stage 2  
Scale 1 : 100

#### Materials Legend

ABW2	ALUMINUM TIMBER LOOK BATTENS - TYPE 2
BR1	BRICKWORK - TYPE 1
CF1	LIGHTWEIGHT CLADDING
CWM	CHANNEL MESH
LV	LOUVER-FRAME
PER	PERFORATED METAL
PM1	PERFORATED METAL
PM2	PERFORATED METAL
PM3	PERFORATED METAL
PM4	PERFORATED METAL
PM5	PERFORATED METAL
PM6	PERFORATED METAL
PM7	PERFORATED METAL
PM8	PERFORATED METAL
PM9	PERFORATED METAL
PM10	PERFORATED METAL
PM11	PERFORATED METAL
PM12	PERFORATED METAL
PM13	PERFORATED METAL
PM14	PERFORATED METAL
PM15	PERFORATED METAL
PM16	PERFORATED METAL
PM17	PERFORATED METAL
PM18	PERFORATED METAL
PM19	PERFORATED METAL
PM20	PERFORATED METAL
PM21	PERFORATED METAL
PM22	PERFORATED METAL
PM23	PERFORATED METAL
PM24	PERFORATED METAL
PM25	PERFORATED METAL
PM26	PERFORATED METAL
PM27	PERFORATED METAL
PM28	PERFORATED METAL
PM29	PERFORATED METAL
PM30	PERFORATED METAL
PM31	PERFORATED METAL
PM32	PERFORATED METAL
PM33	PERFORATED METAL
PM34	PERFORATED METAL
PM35	PERFORATED METAL
PM36	PERFORATED METAL
PM37	PERFORATED METAL
PM38	PERFORATED METAL
PM39	PERFORATED METAL
PM40	PERFORATED METAL
PM41	PERFORATED METAL
PM42	PERFORATED METAL
PM43	PERFORATED METAL
PM44	PERFORATED METAL
PM45	PERFORATED METAL
PM46	PERFORATED METAL
PM47	PERFORATED METAL
PM48	PERFORATED METAL
PM49	PERFORATED METAL
PM50	PERFORATED METAL
PM51	PERFORATED METAL
PM52	PERFORATED METAL
PM53	PERFORATED METAL
PM54	PERFORATED METAL
PM55	PERFORATED METAL
PM56	PERFORATED METAL
PM57	PERFORATED METAL
PM58	PERFORATED METAL
PM59	PERFORATED METAL
PM60	PERFORATED METAL
PM61	PERFORATED METAL
PM62	PERFORATED METAL
PM63	PERFORATED METAL
PM64	PERFORATED METAL
PM65	PERFORATED METAL
PM66	PERFORATED METAL
PM67	PERFORATED METAL
PM68	PERFORATED METAL
PM69	PERFORATED METAL
PM70	PERFORATED METAL
PM71	PERFORATED METAL
PM72	PERFORATED METAL
PM73	PERFORATED METAL
PM74	PERFORATED METAL
PM75	PERFORATED METAL
PM76	PERFORATED METAL
PM77	PERFORATED METAL
PM78	PERFORATED METAL
PM79	PERFORATED METAL
PM80	PERFORATED METAL
PM81	PERFORATED METAL
PM82	PERFORATED METAL
PM83	PERFORATED METAL
PM84	PERFORATED METAL
PM85	PERFORATED METAL
PM86	PERFORATED METAL
PM87	PERFORATED METAL
PM88	PERFORATED METAL
PM89	PERFORATED METAL
PM90	PERFORATED METAL
PM91	PERFORATED METAL
PM92	PERFORATED METAL
PM93	PERFORATED METAL
PM94	PERFORATED METAL
PM95	PERFORATED METAL
PM96	PERFORATED METAL
PM97	PERFORATED METAL
PM98	PERFORATED METAL
PM99	PERFORATED METAL
PM100	PERFORATED METAL



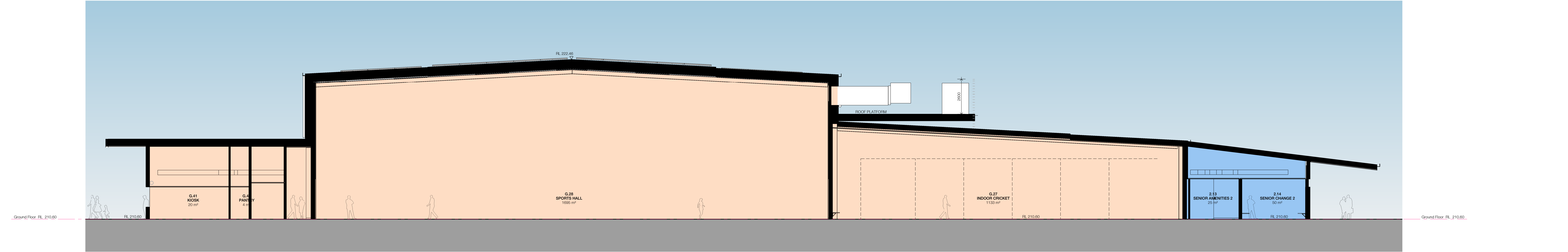


Legend - Staging

- STAGE 1
- STAGE 2

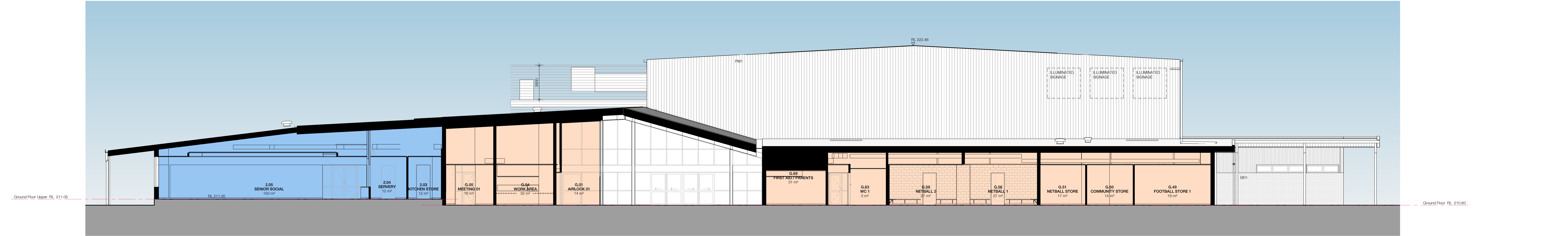
Materials Legend

- BR1 BRICKWORK - TYPE 1
- PM1 LIGHTWEIGHT CLADDING



Section 2

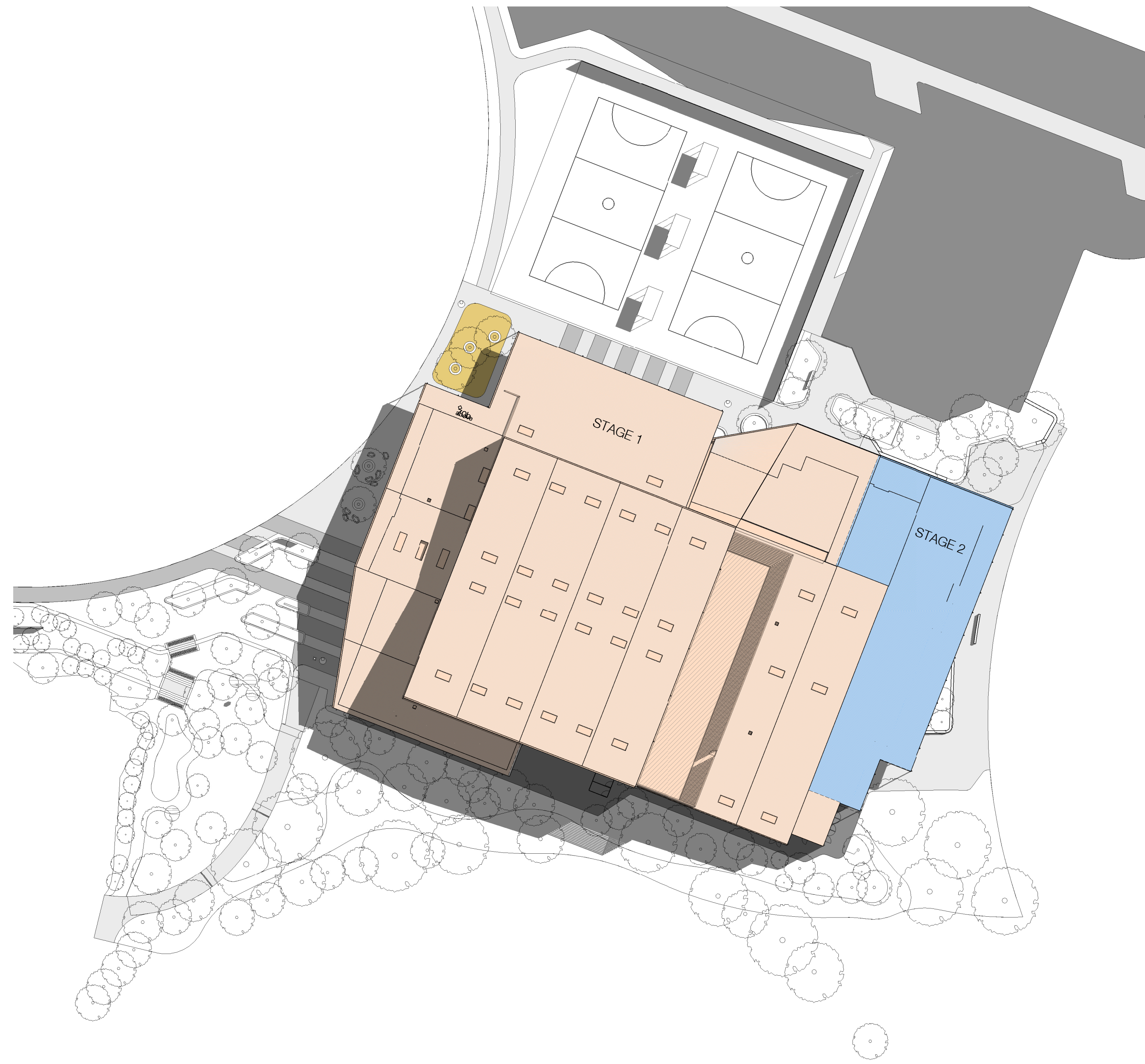
Scale 1 : 100



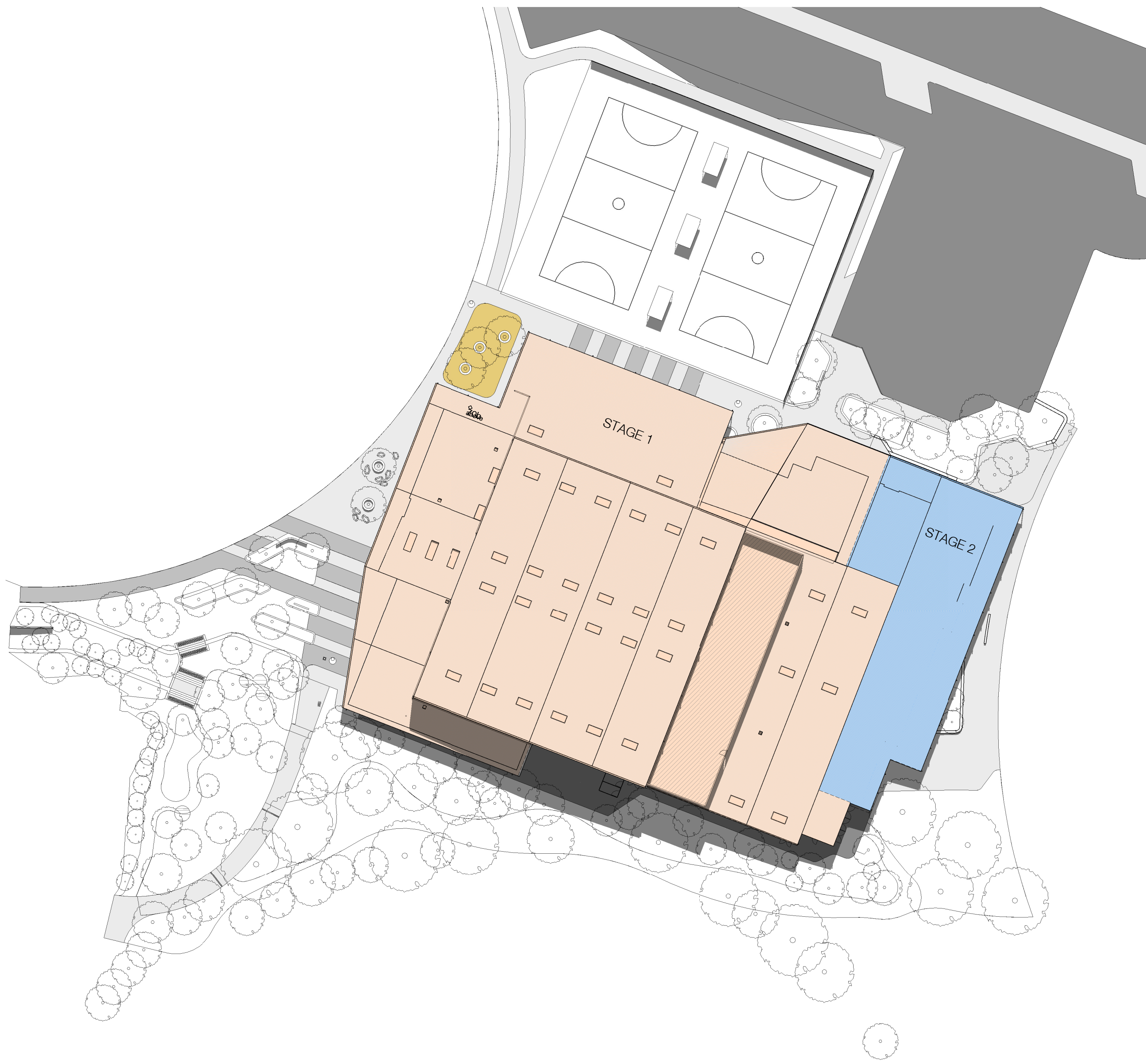
Section 3

Scale 1 : 100

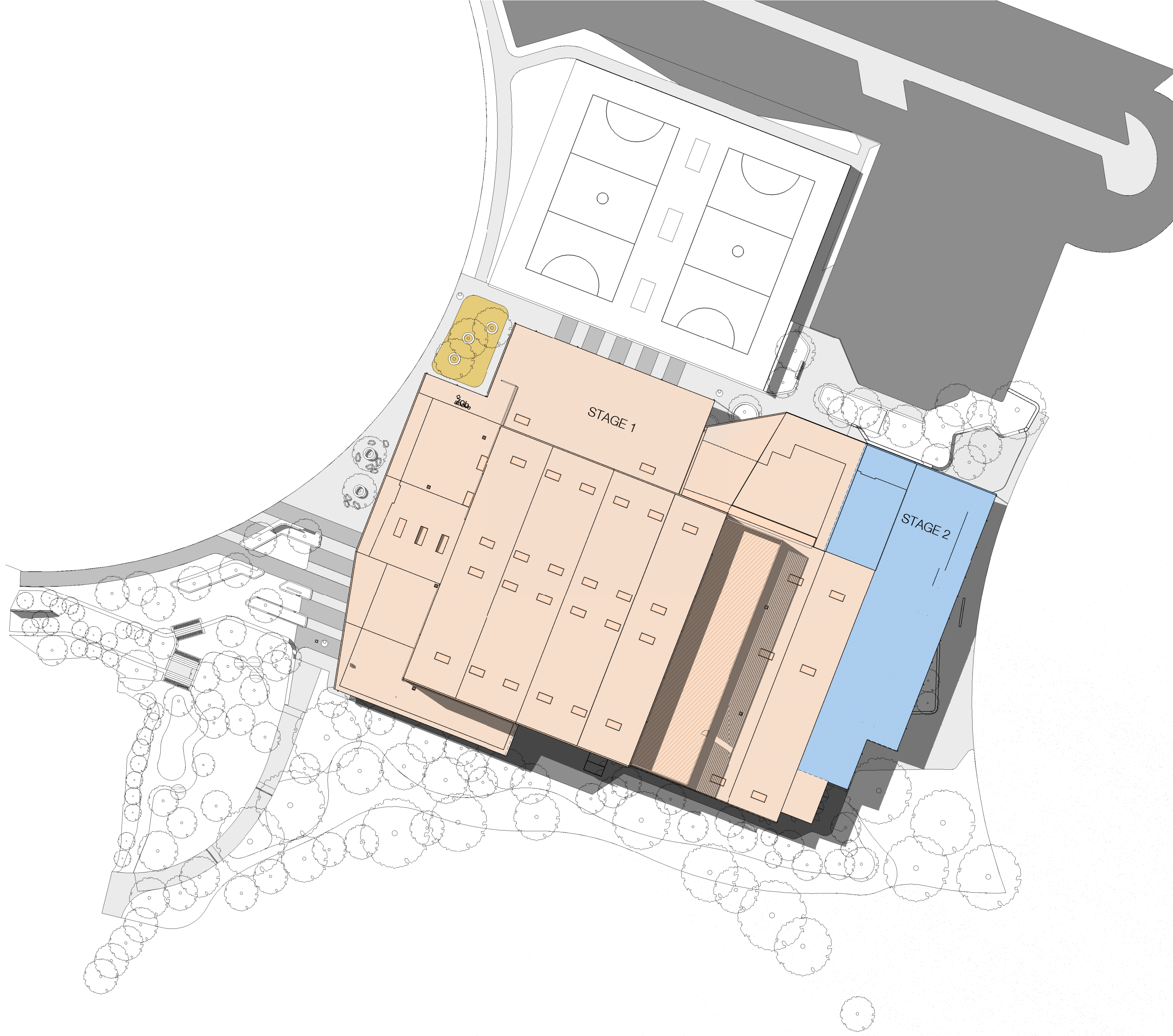




1 TP\_Shadow Study\_Sep22\_9am  
Scale 1 : 500

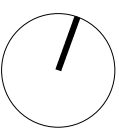


2 TP\_Shadow Study\_Sep22\_12  
Scale 1 : 500



3 TP\_Shadow Study\_Sep22\_3pm  
Scale 1 : 500

Legend - Staging  
 STAGE 1  
 STAGE 2













# MATERIALS



BR1  
Brick



PM1, PM3, PM4  
Lightweight cladding



PM2  
Lightweight cladding



CFC1, CFC2  
Lightweight cladding



PER  
Perforated metal screen



ABA  
Aluminium timber look batten



PM1 - Powdercoat finish



Powdercoat finish



CFC1 - Paint finish



Powdercoat finish



Powdercoat finish



PM3 - Powdercoat finish



PM4



CFC2 - Paint finish