

Proposed All-Weather Snowmaking Unit Installation, Northside/Spurs Area, Mt Buller Ski Field

Waste Management Plan

This Waste Management Plan has been developed to address any issues associated with the provision of waste disposal and recycling on the site.

Waste Disposal and Recycling

A Waste Management and Recycling station will be set up in the staging area within the Site Boundary (see plan below). This station will consist of:

- skips for litter and waste
- bins for plastic and paper recycling

Bins will be a covered type with a lid and secured for high winds and skips will be covered each evening and during periods of high winds.

Bins and skips will be checked regularly and replaced when necessary.

All waste will be removed from the Alpine Resort.

Identification of expected types of waste:

- Timber
- Steel
- Cardboard packaging
- Plastics
- Soil/concrete

Methods to reduce, reuse and recycle where possible will include:

- Accurate calculations ensuring only the required amount of materials are ordered
- Excavated material will be reused on-site with any excess disposed of at the earthen material storage at bottom of the Burnt Hut Spur ski slope for reuse
- Where practicable, materials will be segregated to maximise reuse and recycling;
- Re-use of formwork
- Bricks, tiles and concrete re-used on-site as appropriate, or recycled off-site
- Hazardous and/or intractable wastes are to be disposed of in accordance with WorkCover Authority and EPA requirements

Contingency plans if unexpected types of waste are discovered:

- Any unexpected waste discovered will be recycled or disposed of in accordance with WorkCover Authority and EPA requirements, if necessary Alpine Resorts Victoria Mt Buller Mt Stirling Resort Management will be notified

General site practices will include:

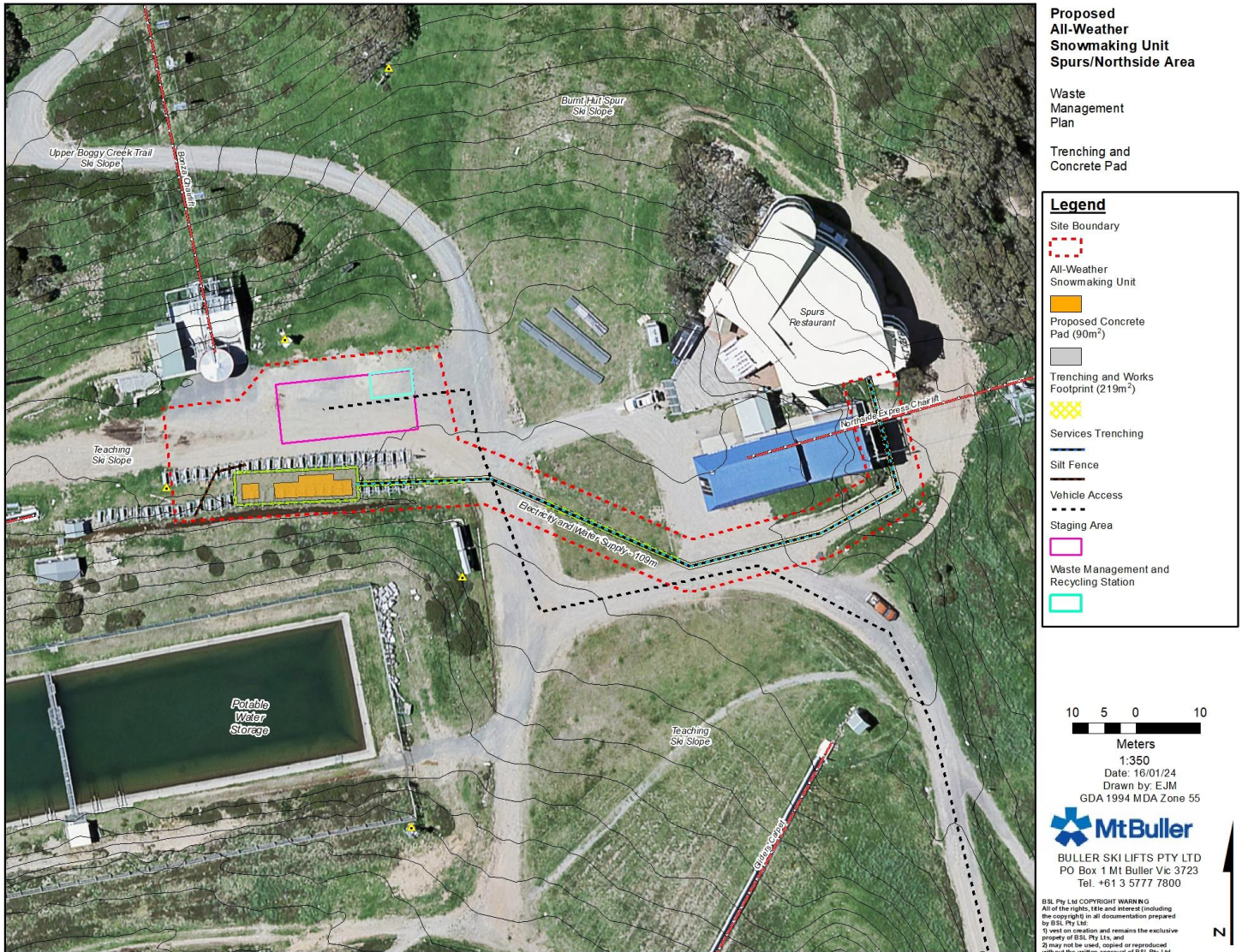
- Waste related equipment is to be well maintained
- Routine checking of waste sorting and storage areas for cleanliness, hygiene, contamination and OH&S issues
- Effective signage, communication, and education for site staff/contractors
- Providing staff/contractors with equipment manuals, training, health and safety procedures, risk assessments, and PPE to control hazards associated with all waste management activities

This copied document to be made available for the sole purpose of enabling its consideration and review as part of a planning process under the Planning and Environment Act 1987. The document must not be used for any purpose which may breach any copyright

**ADVERTISED
PLAN**

- Assessment of any manual handling risks and if necessary, prepare a manual handling control plan for waste and bin transfers
- Daily visual inspections of waste storage areas
- Maintaining and cleaning the waste storage areas

All construction waste material will be removed from the Alpine Resort



**ADVERTISED
PLAN**

This copied document to be made available for the sole purpose of enabling its consideration and review as part of a planning process under the Planning and Environment Act 1987. The document must not be used for any purpose which may breach any copyright