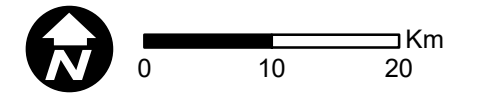


Appendix B

**ADVERTISED
PLAN**

Application Plans

**This copied document to be made available
for the sole purpose of enabling
its consideration and review as
part of a planning process under the
Planning and Environment Act 1987.
The document must not be used for any
purpose which may breach any
copyright**



WEST MOKOAN SOLAR FARM PROJECT LOCATION PLAN

Legend

 West Mokoan Solar Farm Site Boundary

ADVERTISED PLAN

This copied document to be made available for the sole purpose of enabling its consideration and review as part of a planning process under the Planning and Environment Act 1987. The document must not be used for any purpose which may breach any copyright

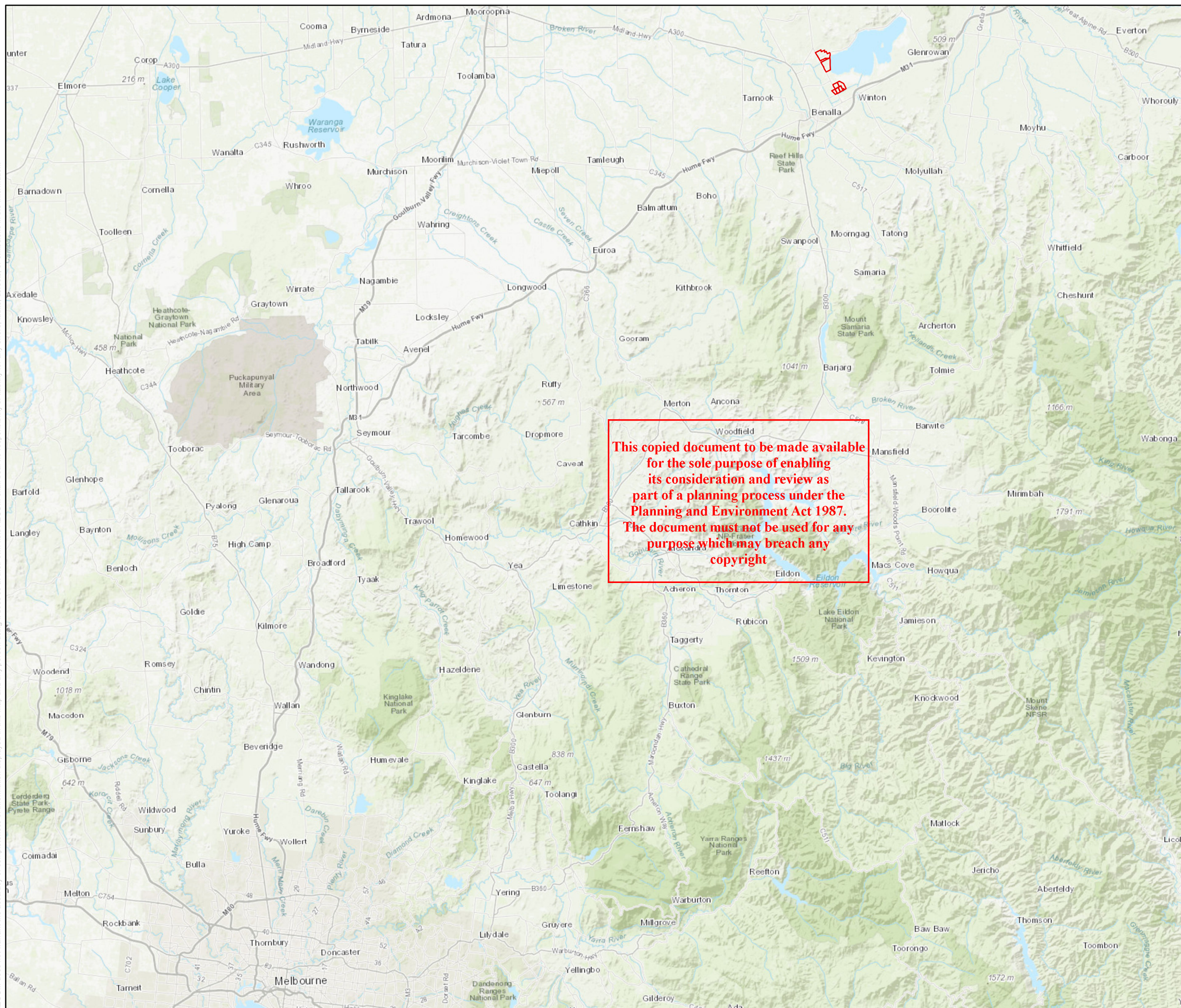


Service Layer Credits: Sources: Esri, HERE, Garmin, Intermap, increment P Corp., GEBCO, USGS, FAO, NPS, NRCAN, GeoBase, IGN, Kadaster NL, Ordnance Survey, Esri Japan, METI, Esri China (Hong

Copyright: Copyright in material relating to the base layers (contextual information) on this page is licensed under a Creative Commons, Attribution 3.0 Australia licence © Department of Finance, Services & Innovation 2017, (Digital Cadastral Database and/or Digital Topographic Database).

The terms of Creative Commons Attribution 3.0 Australia License are available from <https://creativecommons.org/licenses/by/3.0/au/legalcode> (Copyright Licence)

Neither AECOM Australia Pty Ltd (AECOM) nor the Department of Finance, Services & Innovation make any representations or warranties of any kind, about the accuracy, reliability, completeness or suitability or fitness for purpose in relation to the content (in accordance with clause 5 of the Copyright Licence). AECOM has prepared this document for the sole use of its Client based on the Client's description of its requirements having regard to the assumptions and other limitations set out.



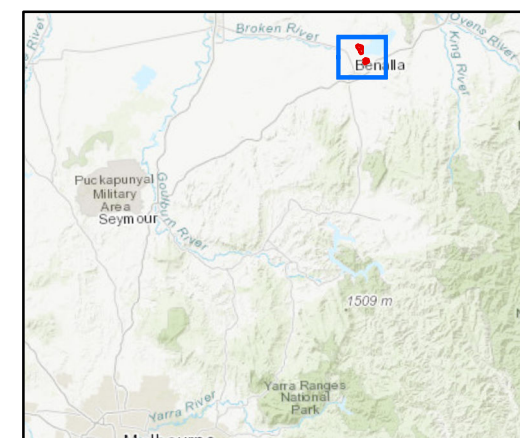


WEST MOKOAN SOLAR FARM PROJECT OVERVIEW PLAN

Legend

- West Mokoan Solar Farm Site Boundary
- Transmission Line Easement
- Property Boundaries

ADVERTISED PLAN



Service Layer Credits: Sources: Esri, HERE, Garmin, Intermap, increment P Corp., GEBCO, USGS, FAO, NPS, NRCAN, GeoBase, IGN, Kadaster NL, Ordnance Survey, Esri Japan, METI, Esri China (Hong

Copyright: Copyright in material relating to the base layers (contextual information) on this page is licensed under a Creative Commons, Attribution 3.0 Australia licence © Department of Finance, Services & Innovation 2017, (Digital Cadastral Database and/or Digital Topographic Database).

The terms of Creative Commons Attribution 3.0 Australia License are available from <https://creativecommons.org/licenses/by/3.0/au/legalcode> (Copyright Licence)

Neither AECOM Australia Pty Ltd (AECOM) nor the Department of Finance, Services & Innovation make any representations or warranties of any kind, about the accuracy, reliability, completeness or suitability or fitness for purpose in relation to the content (in accordance with clause 5 of the Copyright Licence). AECOM has prepared this document for the sole use of its Client based on the Client's description of its requirements having regard to the assumptions and other limitations set out.

AECOM does not warrant the accuracy or completeness of information displayed in this map and any person using it does so at their own risk. AECOM shall bear no responsibility or liability for any errors, faults, defects, or omissions in the information.

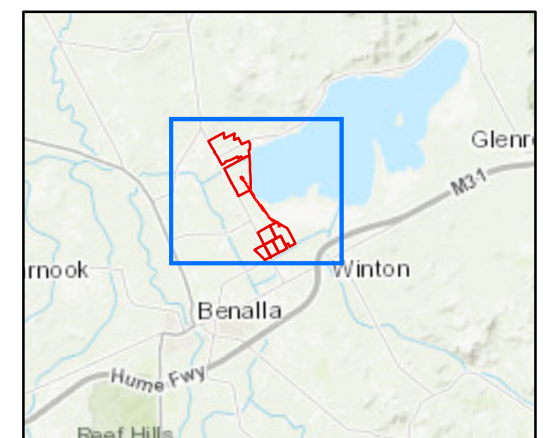
WEST MOKOAN SOLAR FARM PROJECT LANDOWNERSHIP PLAN

Legend

- West Mokoan Solar Farm Site Boundary
- Existing Easements within Site Boundary
- Transmission Line Easement
- Parcel Boundaries

**ADVERTISED
PLAN**

**This copied document to be made available
for the sole purpose of enabling
its consideration and review as
part of a planning process under the
Planning and Environment Act 1987.
The document must not be used for any
purpose which may breach any
copyright**



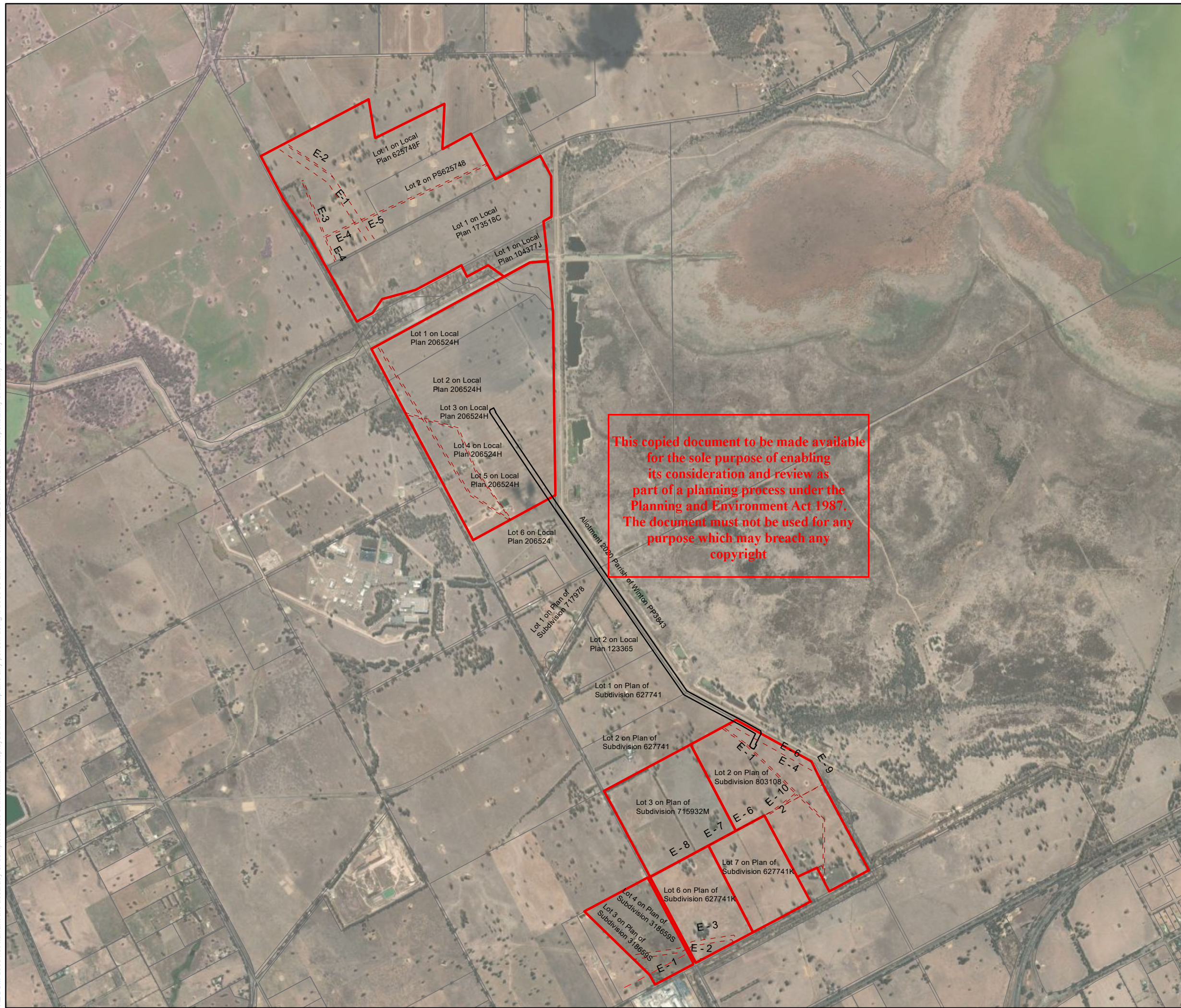
Service Layer Credits: Sources: Esri, HERE, Garmin, Intermap, increment P Corp., GEBCO, USGS, FAO, NPS, NRCAN, GeoBase, IGN, Kadaster NL, Ordnance Survey, Esri Japan, METI, Esri China (Hong

Copyright: Copyright in material relating to the base layers (contextual information) on this page is licensed under a Creative Commons, Attribution 3.0 Australia licence © Department of Finance, Services & Innovation 2017, (Digital Cadastral Database and/or Digital Topographic Database).

The terms of Creative Commons Attribution 3.0 Australia License are available from <https://creativecommons.org/licenses/by/3.0/au/legalcode> (Copyright Licence)

Neither AECOM Australia Pty Ltd (AECOM) nor the Department of Finance, Services & Innovation make any representations or warranties of any kind, about the accuracy, reliability, completeness or suitability or fitness for purpose in relation to the content (in accordance with clause 5 of the Copyright Licence). AECOM has prepared this document for the sole use of its Client based on the Client's description of its requirements having regard to the assumptions and other limitations set out.

AECOM does not warrant the accuracy or completeness of information displayed in this map and any person using it does so at their own risk. AECOM shall bear no responsibility or liability for any errors, faults, defects, or omissions in the information.



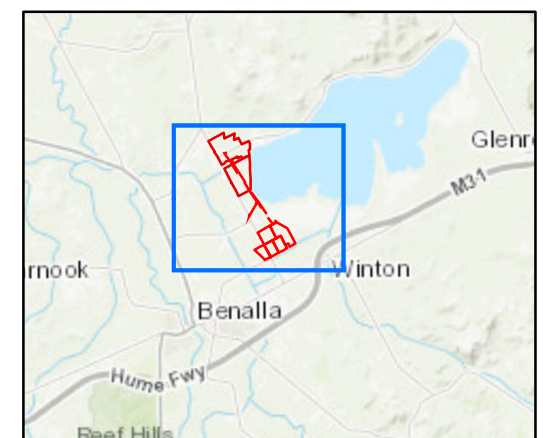
WEST MOKOAN SOLAR FARM PROJECT ZONING PLAN

ADVERTISED PLAN

Legend

- West Mokoan Solar Farm Site Boundary
- Transmission Line Easement
- Planning Scheme Zones**
- FZ - Farming Zone
- IN1Z - Industrial 1 Zone
- IN2Z - Industrial 2 Zone
- PPRZ - Public Park Recreation Zone
- PUZ1 - Public Use Zone - Service and Utility
- TRZ1 - State Transport Infrastructure
- TRZ2 - Principal Road Network
- TRZ3 - Significant Municipal Road
- RLZ - Rural Living Zone
- SUZ - Special Uses Zone

This copied document to be made available for the sole purpose of enabling its consideration and review as part of a planning process under the Planning and Environment Act 1987. The document must not be used for any purpose which may breach any copyright

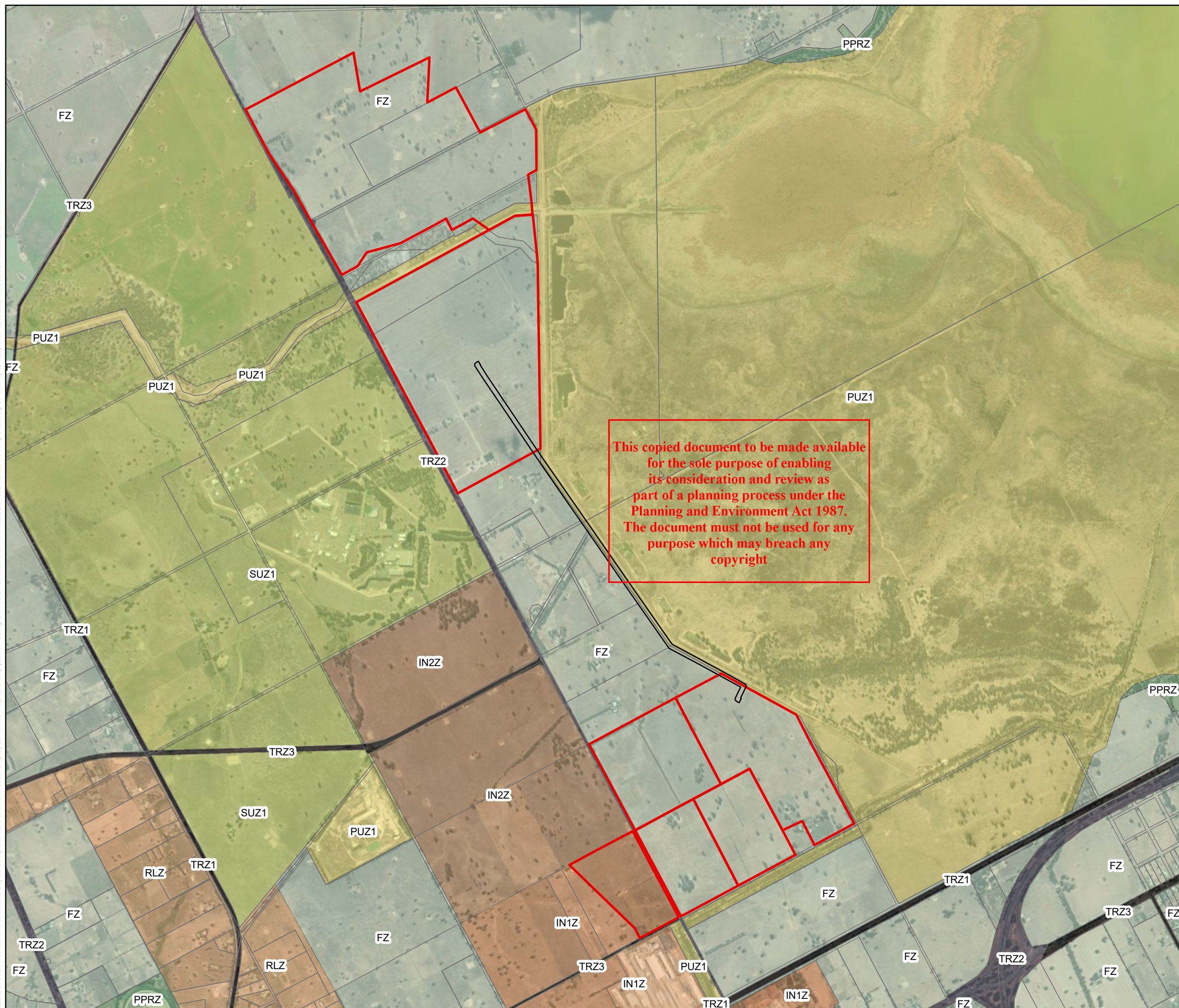


Service Layer Credits: Sources: Esri, HERE, Garmin, Intermap, increment P Corp., GEBCO, USGS, FAO, NPS, NRCAN, GeoBase, IGN, Kadaster NL, Ordnance Survey, Esri Japan, METI, Esri China (Hong

Copyright: Copyright in material relating to the base layers (contextual information) on this page is licensed under a Creative Commons Attribution 3.0 Australia licence © Department of Finance, Services & Innovation 2017, (Digital Cadastral Database and/or Digital Topographic Database).

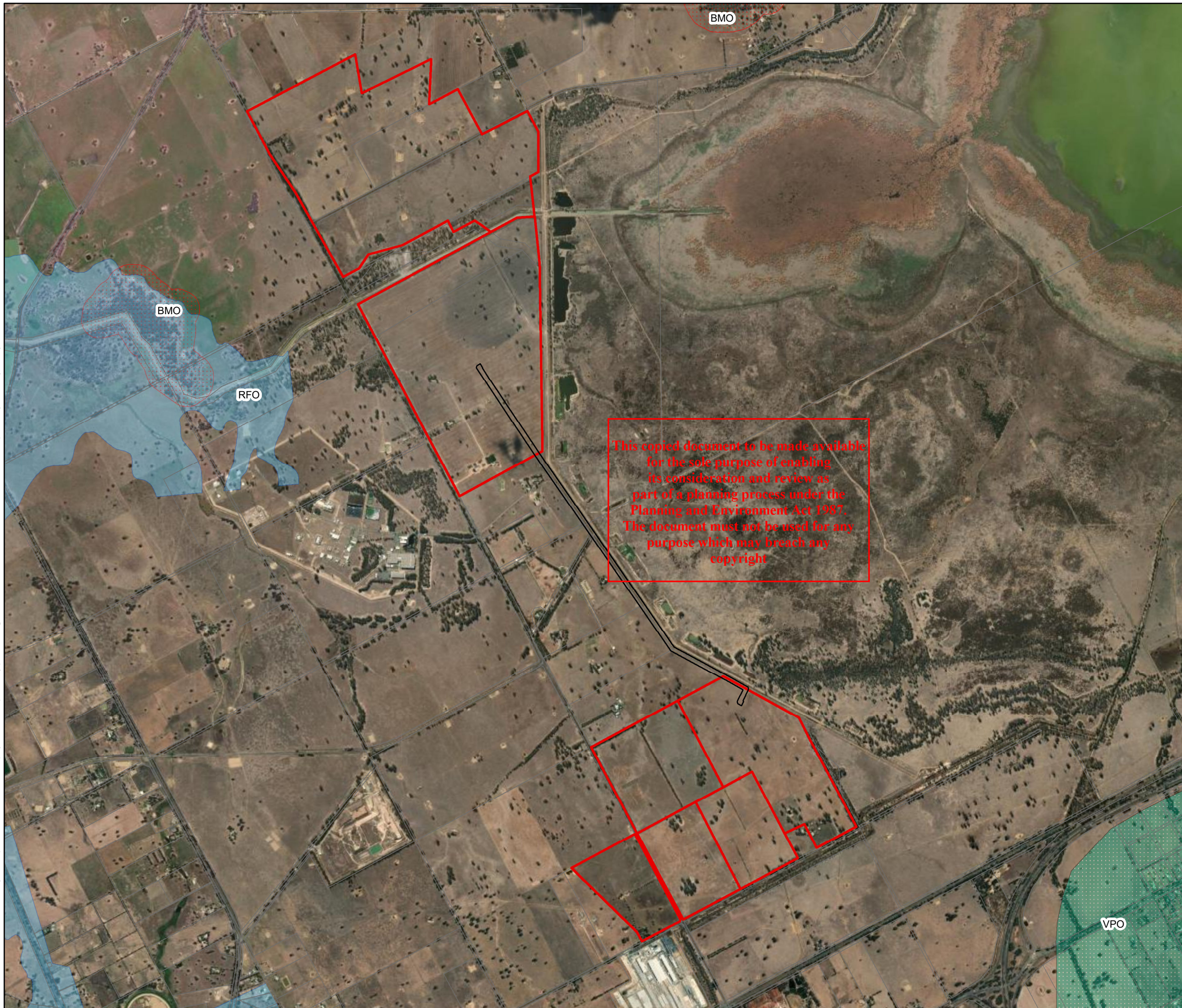
The terms of Creative Commons Attribution 3.0 Australia License are available from <https://creativecommons.org/licenses/by/3.0/au/legalcode> (Copyright Licence)

Neither AECOM Australia Pty Ltd (AECOM) nor the Department of Finance, Services & Innovation make any representations or warranties of any kind, about the accuracy, reliability, completeness or suitability or fitness for purpose in relation to the content (in accordance with clause 5 of the Copyright Licence). AECOM has prepared this document for the sole use of its Client based on the Client's description of its requirements having regard to the assumptions and other limitations set out.



AECOM does not warrant the accuracy or completeness of information displayed in this map and any person using it does so at their own risk. AECOM shall bear no responsibility or liability for any errors, faults, defects, or omissions in the information.

AECOM does not warrant the accuracy or completeness of information displayed in this map and any person using it does so at their own risk. AECOM shall bear no responsibility or liability for any errors, faults, defects, or omissions in the information.







AECOM

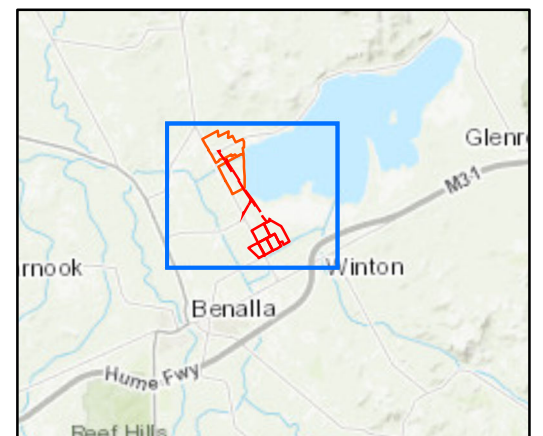


WEST MOKOAN SOLAR FARM PROJECT OVERLAY PLAN

Legend

-  West Mokoan Solar Farm Site Boundary
-  Indicative Transmission Line Easement
- Planning Scheme Overlays**
-  BMO - Bushfire Management Overlay
-  RFO - Rural Floodway Overlay
-  VPO - Vegetation Protection Overlay

ADVERTISED PLAN



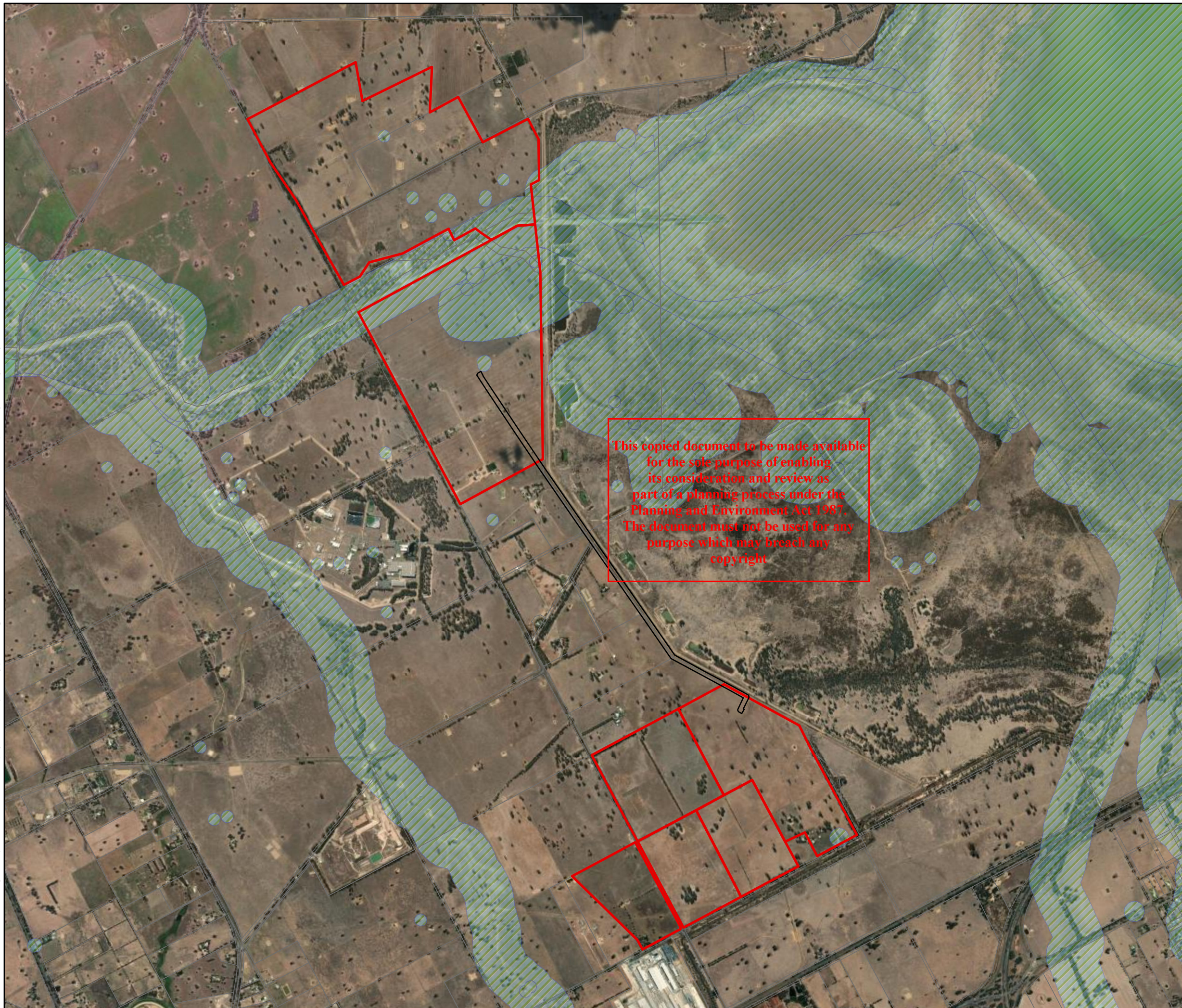
Service Layer Credits: Sources: Esri, HERE, Garmin, Intermap, increment P Corp., GEBCO, USGS, FAO, NPS, NRCAN, GeoBase, IGN, Kadaster NL, Ordnance Survey, Esri Japan, METI, Esri China (Hong

Copyright: Copyright in material relating to the base layers (contextual information) on this page is licensed under a Creative Commons, Attribution 3.0 Australia licence © Department of Finance, Services & Innovation 2017, (Digital Cadastral Database and/or Digital Topographic Database).

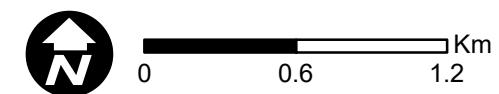
The terms of Creative Commons Attribution 3.0 Australia License are available from <https://creativecommons.org/licenses/by/3.0/au/legalcode> (Copyright Licence)

Neither AECOM Australia Pty Ltd (AECOM) nor the Department of Finance, Services & Innovation make any representations or warranties of any kind, about the accuracy, reliability, completeness or suitability or fitness for purpose in relation to the content (in accordance with clause 5 of the Copyright Licence). AECOM has prepared this document for the sole use of its Client based on the Client's description of its requirements having regard to the assumptions and other limitations set out.

AECOM does not warrant the accuracy or completeness of information displayed in this map and any person using it does so at their own risk. AECOM shall bear no responsibility or liability for any errors, faults, defects, or omissions in the information.



AECOM

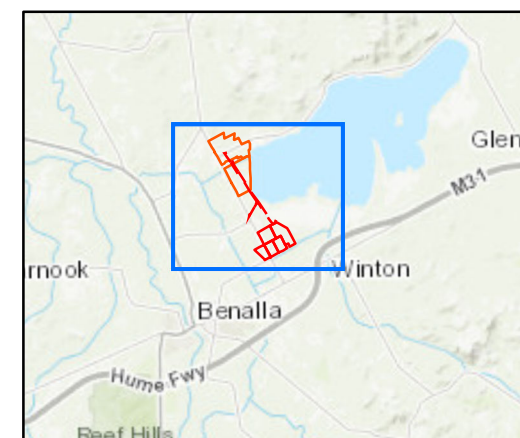


WEST MOKOAN SOLAR FARM PROJECT ABORIGINAL CULTURAL HERITAGE SENSITIVITY PLAN

Legend

- West Mokoan Solar Farm Site Boundary
- Transmission Line Easement
- Area of Aboriginal Cultural Heritage Sensitivity

ADVERTISED PLAN



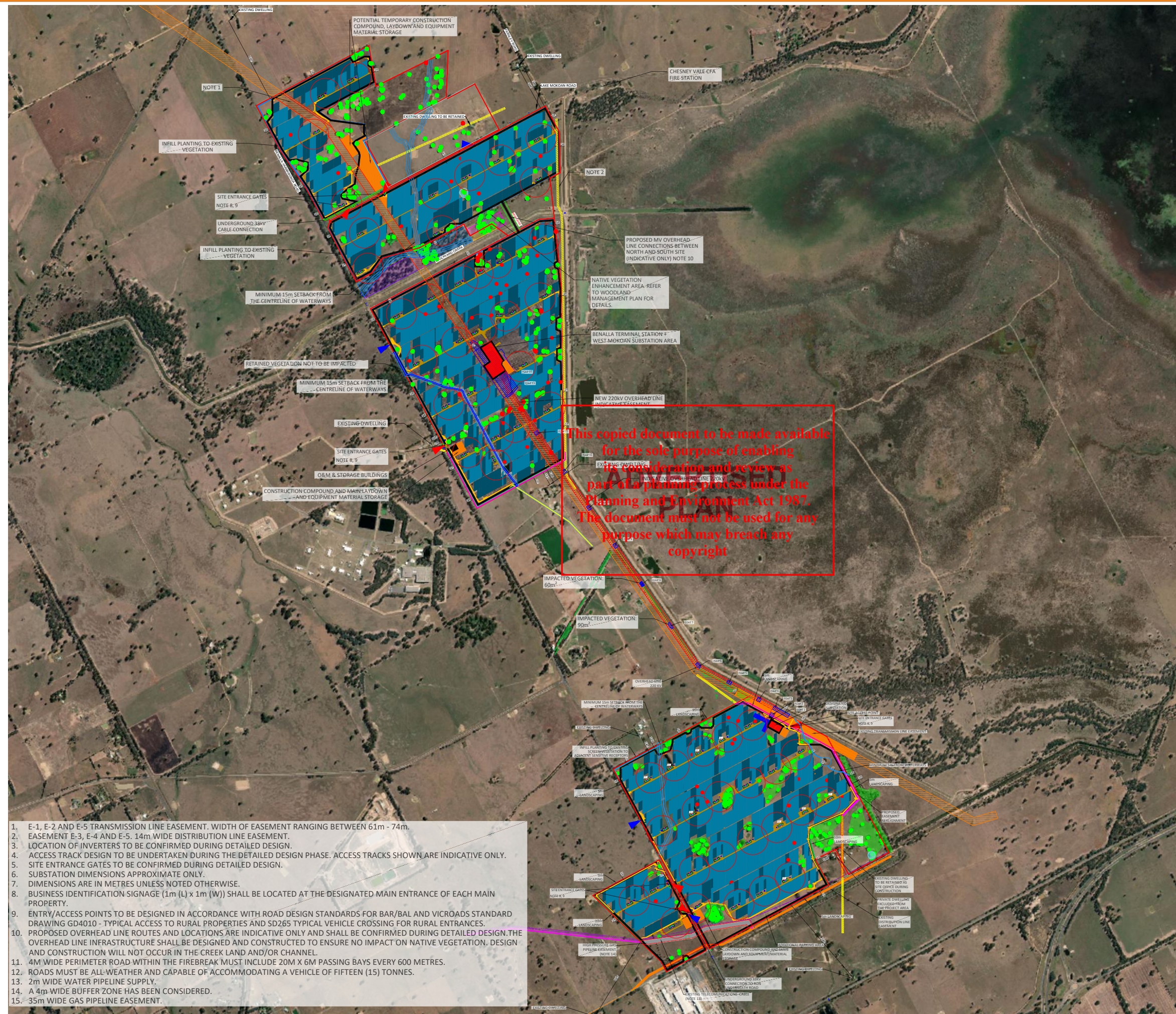
Service Layer Credits: Sources: Esri, HERE, Garmin, Intermap, increment P Corp., GEBCO, USGS, FAO, NPS, NRCAN, GeoBase, IGN, Kadaster NL, Ordnance Survey, Esri Japan, METI, Esri China (Hong

Copyright: Copyright in material relating to the base layers (contextual information) on this page is licensed under a Creative Commons, Attribution 3.0 Australia licence © Department of Finance, Services & Innovation 2017, (Digital Cadastral Database and/or Digital Topographic Database).

The terms of Creative Commons Attribution 3.0 Australia License are available from <https://creativecommons.org/licenses/by/3.0/au/legalcode> (Copyright Licence)

Neither AECOM Australia Pty Ltd (AECOM) nor the Department of Finance, Services & Innovation make any representations or warranties of any kind, about the accuracy, reliability, completeness or suitability or fitness for purpose in relation to the content (in accordance with clause 5 of the Copyright Licence). AECOM has prepared this document for the sole use of its Client based on the Client's description of its requirements having regard to the assumptions and other limitations set out.

West Mokoan Solar Farm_LP3-BDL_22 (KC_BDL_05) Planning Laydowns



	Site Boundary
	Emergency access
	Primary access
	Security Fence
	Substation area
	PCS - 2 Inverters & DC coupled BESS
	PCS - 2 Inverters & DC coupled BESS & Native Barrier option if required
	Construction easement
	Construction easement
	O&M and storage buildings
	Primary access Road covering access to PCS & Substation
	Perimeter Track (20m roads / all weathered Per CFA)
	Existing vegetation and environmental values to be retained
	Native 20m reserved fire easement
	Existing 20m Overhead Line Easement
	Redundant Line Easement to be retained
	Proposed powerline Easement alignment
	Damage easement to be created
	High pressure gas pipeline easement
	150m Fire Break
	Designated Waterway
	10m planting zone
	10m wide screen planting zone
	5m wide screen planting zone
	30m Buffer cleared trees
	Vegetation management area - project area
	Vegetation management area - screen land
	Native vegetation enhancement area - screen land
	Native vegetation enhancement area - project area
	Site entrance and barrier signage
	Business identification signage
	400L Fire Water Tank with 100mm fibre 2m suction point
	100m water tank radius
	Trees to be retained
	Trees to be removed

PV SYSTEM SPECIFICATIONS	
Capacity - DC	370.61 MW _p
Export Capacity - AC	300 MW _{AC}
DC/AC Ratio	1.253
Modules	(607560) 610 W Bifacial
Mods. per string	30
Pitch	5.20 m
GCR	45.80 %
Mounting structure	(7676) NxT Mono-Line SAT
• Full (3 Strings)	4900
• Partial (2 Strings)	2776
• Half	
Inverters	(112) Central Inverter 3575 KVA
• Nominal Power	3575 KVA
Access roads	32924 m
• Fenced area	(6258268 m ²) 1547 Ha
• Perimeter	23915 m

Rev	Date	Comments	Dwn	Chkd
17	21.07.25	Updated design	MG	
15	08.08.25	Updated design	AG	
14	16.05.25	Updated Layout	DC	
22	24.02.26	Update Noise Barriers	DC	
21	30.01.26	Water tanks added	ADC	
20	18.12.25	Planning updates	JL	
19	17.09.25	Updated layout	AG	
18	04.08.25	Updated BESS areas	DC	
Rev	Date	Comments	Dwn	Chkd

DC	CHECKED	APPROVED	DATE
			30.01.2026

PROJECT NAME & ADDRESS:
 Location: Benalla, Victoria
 Australia

NOTES:
 - 610 Wp Bifacial modules
 -
 -

Paper Size:	Scale:	Sheet:
A3	1:30	1

CAPACITY:
 607560 Modules 370.61 MWp






DRAWING TITLE:
 AUS West Mokoan Solar Farm_LP3-BDL_22 (KC_BDL_05) Planning Laydowns
 Hybrid Project Layout

DRAWING NUMBER: LP3-BDL	STATUS: Preliminary
----------------------------	------------------------

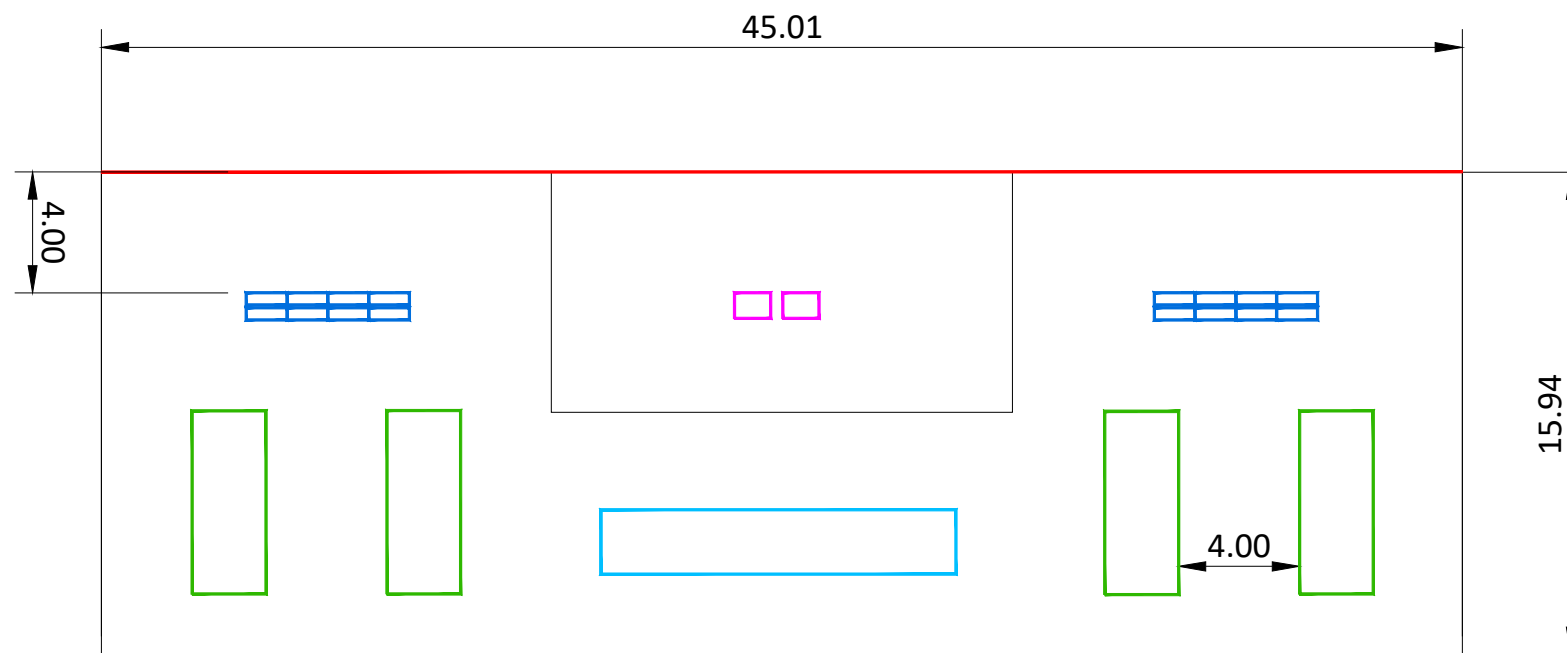
Lightsource Development Limited,
 7th Floor, 33 Holborn, London, EC1N 2HU
 General: +44 (0) 333 200 0755
 Web: www.lightsourcebp.com
 info@lightsourcebp.com

ISO full bleed A3 (420.00 x 297.00 MM)-V.1.0

THIS DOCUMENT IS THE PROPERTY OF LIGHTSOURCE DEVELOPMENT LTD. IT IS PROHIBITED TO REPRODUCE IT FOR OTHER PURPOSES WITHOUT AUTHORIZATION IN WRITING.

	Battery
	DCDC Converter
	Power Conversion Station (PCS)
	Auxiliary Transformer
	4 m Wall Noise Barrier

ADVERTISED PLAN



4 BESS containers per PCS
 2 Inverters per PCS
 16 DC-DC converter per PCS
 2 Aux Tx per PCS

This copied document to be made available for the sole purpose of enabling its consideration and review as part of a planning process under the Planning and Environment Act 1987. The document must not be used for any purpose which may breach any copyright

METERS



Rev	Date	Comments	Dwn	Chkd
06	20.02.26	Wall noise barrier updated	AG	KZ
04	27.03.25	Aux Tx added	AG	PC
03	23.02.24	Quantities updated	AG	
02	22.02.24	Updated distances between equipment	EPG	
01	22.02.24	Quantities updated	AG	

DA			06.04.2023
DRAWN	CHECKED	APPROVED	DATE

PROJECT NAME & ADDRESS:
 Location: Benalla, Victoria
 Australia

NOTES:
 -
 -
 -
 -

Paper Size: A3	Scale: Custom	Sheet: 1
-------------------	------------------	-------------

CAPACITY:

DRAWING TITLE:
 AUS_West Mokoan_DC Coupled BESS Station_06






DRAWING NUMBER: BESS_LYT	STATUS: Preliminary
-----------------------------	------------------------



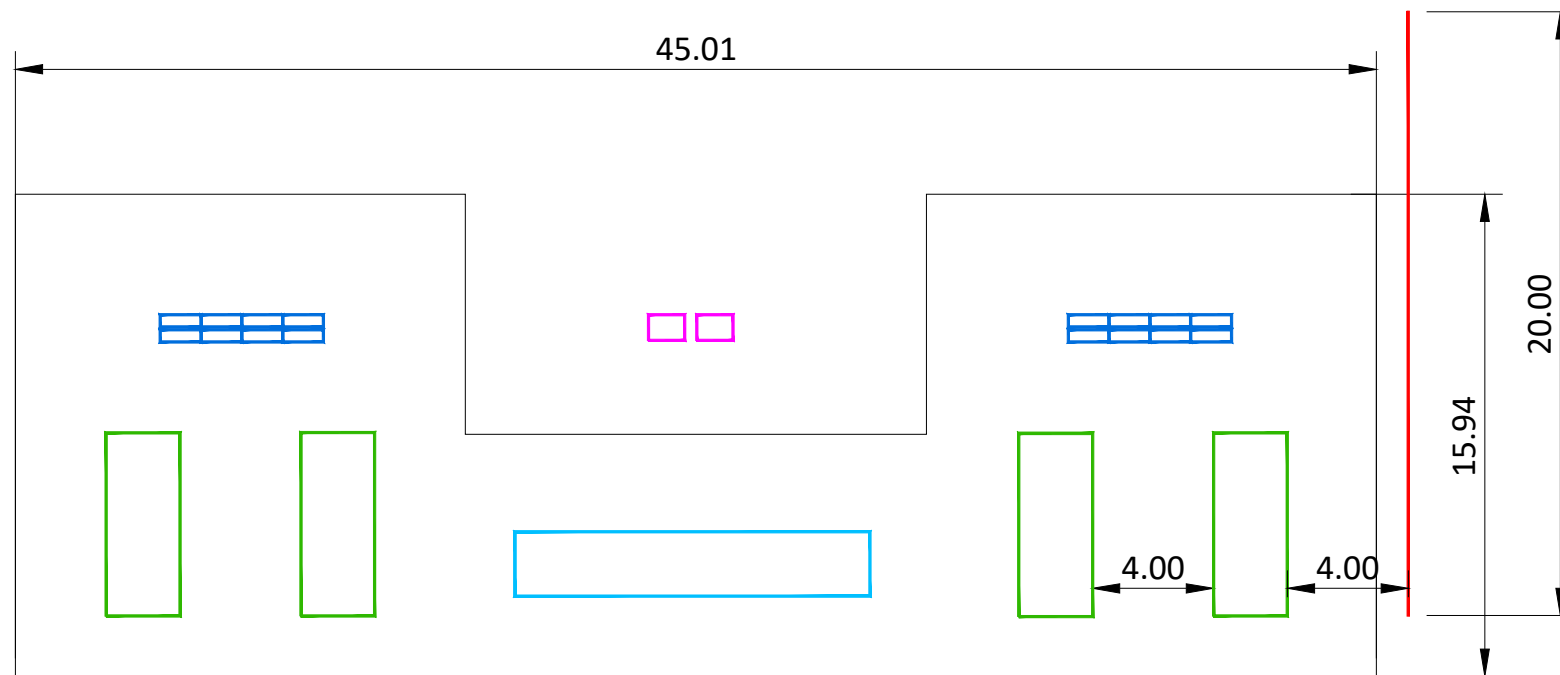
Lightsource Development Services Australia Pty Ltd
 Level 9 401 Collins Street, Melbourne, 3000
 General: +61 (3) 9071 0326
 Web: www.lightsourcebp.com
 info@lightsourcebp.com

THIS DOCUMENT IS THE PROPERTY OF LIGHTSOURCE DEVELOPMENT SERVICES AUSTRALIA PTY LTD IT IS PROHIBITED TO REPRODUCE IT FOR OTHER PURPOSES WITHOUT AUTHORIZATION IN WRITING

ISO full bleed A3 (420.00 x 297.00 MM)

	Battery
	DCDC Converter
	Power Conversion Station (PCS)
	Auxiliary Transformer
	4 m Wall Noise Barrier

ADVERTISED PLAN



4 BESS containers per PCS
 2 Inverters per PCS
 16 DC-DC converter per PCS
 2 Aux Tx per PCS

This copied document to be made available for the sole purpose of enabling its consideration and review as part of a planning process under the Planning and Environment Act 1987. The document must not be used for any purpose which may breach any copyright

METERS



Rev	Date	Comments	Dwn	Chkd
07	20.02.26	Wall noise barrier update	AG	KZ
06	06.02.26	Wall noise barrier updated	AG	KZ
04	27.03.25	Aux Tx added	AG	PC
03	23.02.24	Quantities updated	AG	
02	22.02.24	Updated distances between equipment	EPG	
01	22.02.24	Quantities updated	AG	

DA			06.04.2023
DRAWN	CHECKED	APPROVED	DATE

PROJECT NAME & ADDRESS:
 Location: Benalla, Victoria
 Australia

NOTES:
 -
 -
 -

Paper Size: A3	Scale: Custom	Sheet: 1
-------------------	------------------	-------------

CAPACITY:

DRAWING TITLE:
 AUS_West Mokoan_DC Coupled BESS Station_07

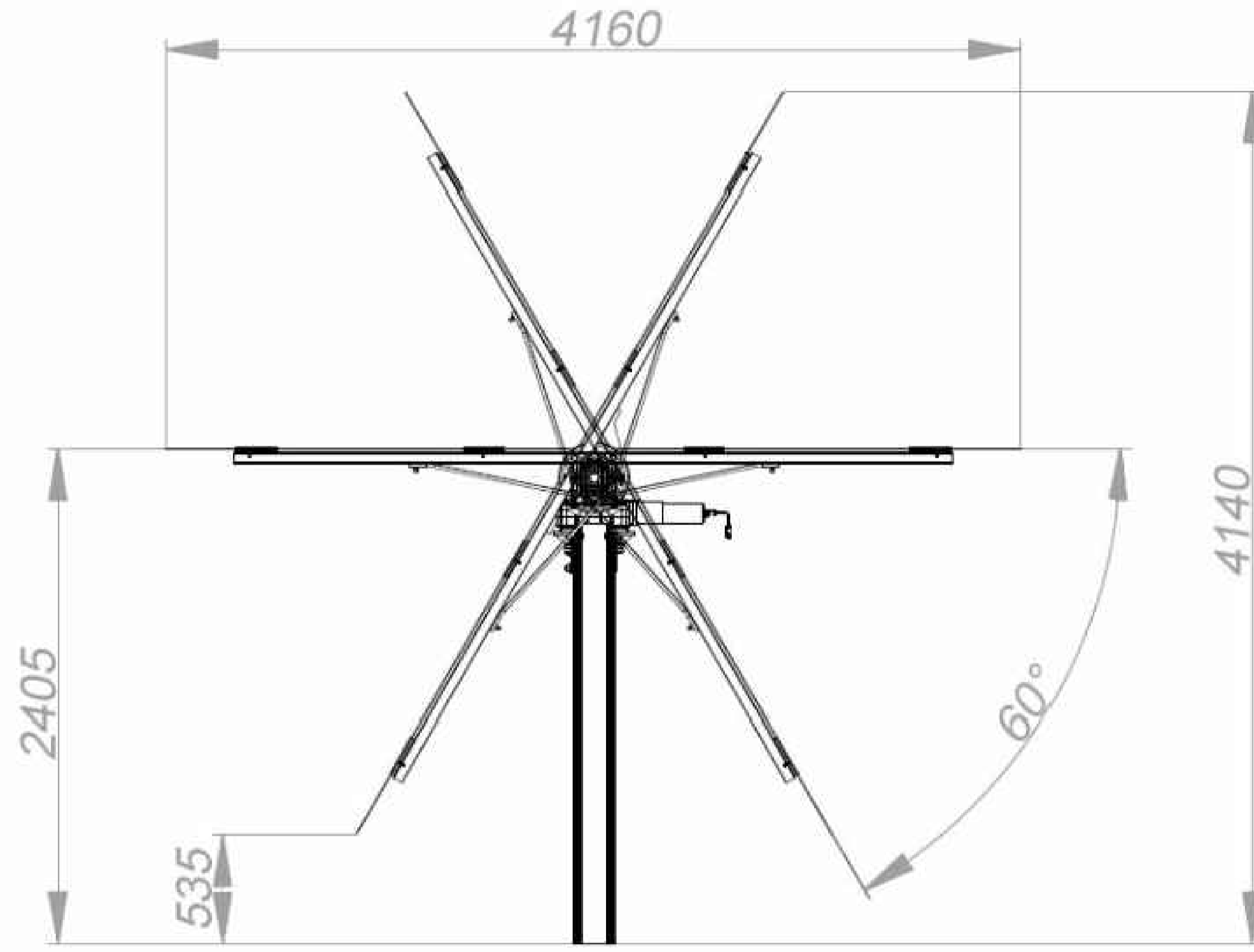
DRAWING NUMBER: BESS_LYT	STATUS: Preliminary
-----------------------------	------------------------



Lightsource Development Services Australia Pty Ltd
 Level 9 401 Collins Street, Melbourne, 3000
 General: +61 (3) 9071 0326
 Web: www.lightsourcebp.com
 info@lightsourcebp.com

THIS DOCUMENT IS THE PROPERTY OF LIGHTSOURCE DEVELOPMENT SERVICES AUSTRALIA PTY LTD IT IS PROHIBITED TO REPRODUCE IT FOR OTHER PURPOSES WITHOUT AUTHORIZATION IN WRITING

ISO full bleed A3 (420.00 x 297.00 MM)



ADVERTISED PLAN

TRACKER ELEVATION
 N.T.S.

This copied document to be made available for the sole purpose of enabling its consideration and review as part of a planning process under the Planning and Environment Act 1987. The document must not be used for any purpose which may breach any copyright

DRAWING COLOUR CODED - PRINT ALL COPIES IN COLOUR

NOT FOR CONSTRUCTION

PLEASE NOTE THE ENCLOSED DRAWINGS ARE ONLY PRELIMINARY AND NOT FOR CONSTRUCTION, AND THEREFORE ARE LIKELY TO BE SUBJECT TO CHANGE.



PROJECT

KENNEDYS CREEK SOLAR FARM

BENALLA
 Victoria

CLIENT

433 Link Development Pty Ltd
 Level 27, 150 Lonsdale Street
 Melbourne, VIC 3000



CONSULTANT

AECOM
 COLLINS SQUARE, LEVEL 10, TOWER TWO
 727 COLLINS STREET, MELBOURNE, VIC 3008
 613 9653 1234 tel 613 9654 7117 fax
 www.aecom.com

SAFETY IN DESIGN INFORMATION

ARE THERE ANY ADDITIONAL HAZARDS / RISKS NOT NORMALLY ASSOCIATED WITH THE TYPES OF WORK DETAILED ON THIS DRAWING?
 NO
 YES

ISSUE/REVISION

I/R	DATE	DESCRIPTION
0	12/09/2019	PRELIMINARY

KEY PLAN

PROJECT NUMBER

60597829

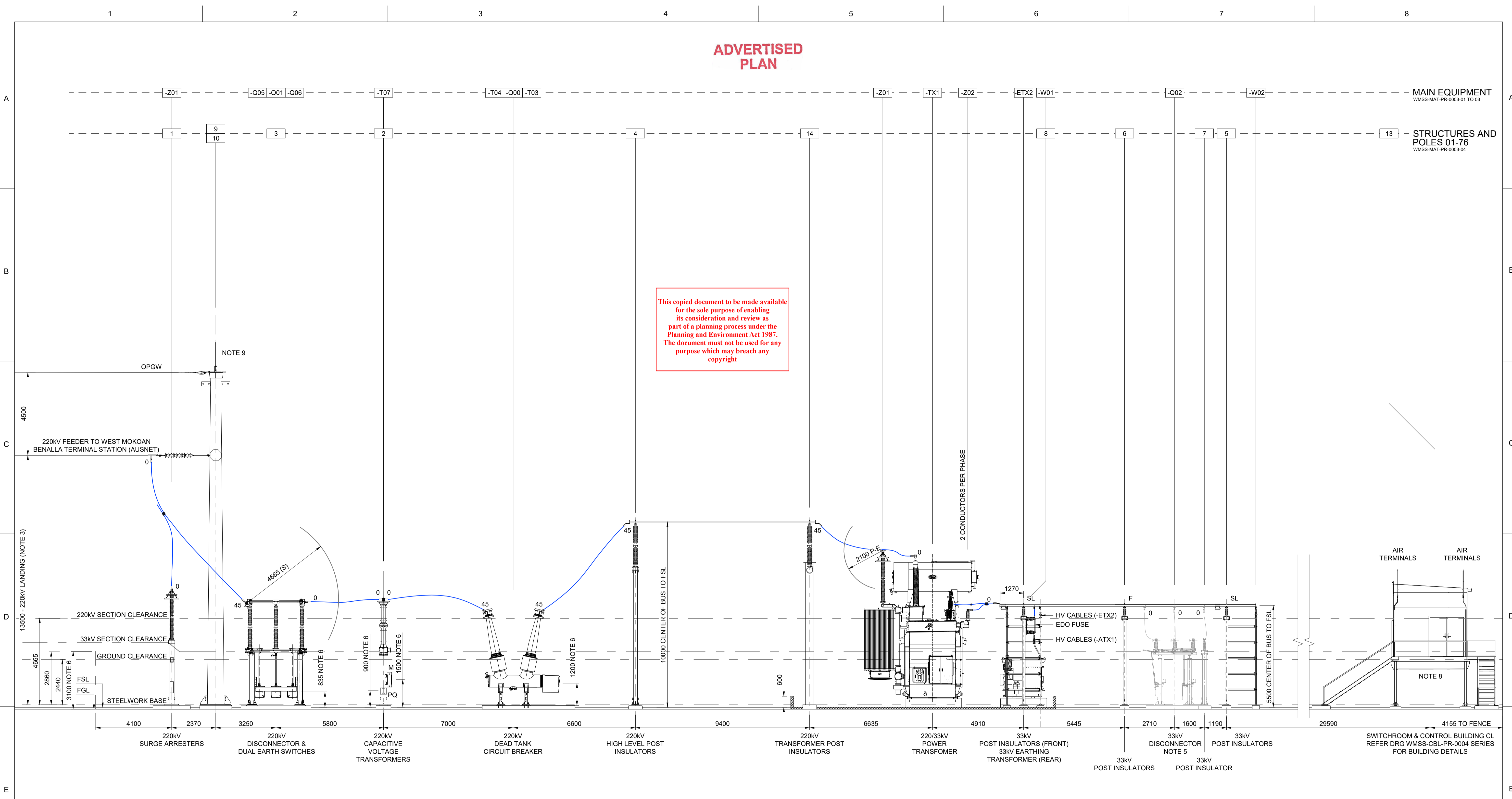
SHEET TITLE

SOLAR FARM
 TYPICAL TRACKER
 ELEVATION

SHEET NUMBER

SHT-EL-1021

ADVERTISED PLAN

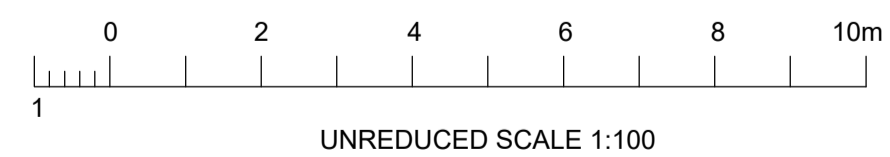


This copied document to be made available for the sole purpose of enabling its consideration and review as part of a planning process under the Planning and Environment Act 1987. The document must not be used for any purpose which may breach any copyright

- LEGEND:**
- SL DENOTES SLIDING BUSBAR END
 - F DENOTES FIXED BUSBAR END
 - 45 DENOTES COMPRESSION LUG PALM ANGLE
 - FSL FINISHED SURFACE LEVEL (100mm CRUSHED ROCK)
 - FGL FINISHED GROUND LEVEL
 - OPGW OPTICAL GROUND WIRE
 - M MARSHALLING BOX
 - PQ PQ SENSOR
 - ELECTRICAL CLEARANCE (NOTE 2)
 - STRUNG BUS WORKS

- NOTES:**
1. UNLESS STATED OTHERWISE, ALL HEIGHTS USE BOTTOM OF STEELWORK AS BASE POINT.
 2. ENSURE MINIMUM 220kV CLEARANCES ARE MAINTAINED:
 - 220kV PHASE TO EARTH = 2100mm
 - 220kV PHASE TO PHASE = 2415mm
 - 220kV NON-FLASHOVER CLEARANCE (N) = 2225mm
 - 220kV GROUND CLEARANCE (G) = 2440mm
 - 220kV SECTION CLEARANCE (S) = 4665mm
 - 220kV HORIZONTAL WORK SAFETY CLEARANCE (H) = 4125mm
 - 220kV VERTICAL WORK SAFETY CLEARANCE (V) = 3565mm
 3. GANTRY HEIGHT IS INDICATIVE ONLY AND WILL BE DETERMINED IN DETAILED DESIGN PHASE.
 4. EQUIPMENT VENDOR DETAILS TO BE FINALISED IN DETAILED DESIGN PHASE.
 5. THE HARMONIC STUDY SHALL BE CONDUCTED BY CONTRACTOR WITHIN DETAILED DESIGN. TWO INDOOR 33kV FEEDERS HAVE BEEN CONSIDERED FOR CONNECTION OF THE HARMONIC FILTERS TO 33kV NETWORK. TWO OUTDOOR 33kV FEEDERS (INCL. THE ASSOCIATED SF6 CIRCUIT BREAKERS) HAVE ALSO BEEN CONSIDERED FOR THE CONNECTION OF THE HARMONIC FILTERS. A TRANSIENT VOLTAGE STUDY TO BE UNDERTAKEN BY THE CONTRACTOR TO IDENTIFY THE TRVs AT INDOOR 33kV SWITCHGEAR. IF THE TRV EXCEEDS THE CAPABILITY OF THE INDOOR 33kV CIRCUIT BREAKERS, THE OUTDOOR CONNECTION POINTS SHALL BE UTILISED. THE CONTRACTOR TO MAKE ALLOWANCES FOR ALL THE INDOOR AND OUTDOOR CONNECTION POINTS (AND FEEDERS) AND ASSOCIATED STUDIES (HARMONIC, HARMONIC FILTER SIZING AND TRV STUDY).
 6. EQUIPMENT PANEL DIMENSIONS, TX BUND WALL, TX PLINTH, STRUCTURAL SUPPORTS & FENCE HEIGHTS SHOWN ARE INDICATIVE ONLY AND WILL BE FINALISED ONCE VENDOR DETAILS ARE PROVIDED AND STRUCTURAL ASSESSMENT IS COMPLETED DURING DETAILED DESIGN STAGE.

7. BUSBAR SIZE, CONDUCTOR JOINTS, FITTINGS AND ACCESSORIES (AND ASSOCIATED SPECIFICATIONS AND ANGLES) ARE INDICATIVE ONLY AND WILL BE FINALISED IN DETAILED DESIGN.
8. ALL CABLE LADDERS, ASSOCIATED SUPPORTS AND STANDS UNDERNEATH THE SWITCHROOM & CONTROL BUILDING WILL BE DESIGNED WITHIN THE DETAILED DESIGN STAGE.
9. FIBRE SPLICE BOX LOCATION WILL BE DETERMINED DURING DETAILED DESIGN.
10. THE INDICATIVE CONDUCTOR TYPE FOR 220kV BUSBAR IS AAAC SULPHUR AND 125x6 RIGID BUS. FOR THE 33kV BUSBAR IS SULPHUR AND 125x6 RIGID BUS.

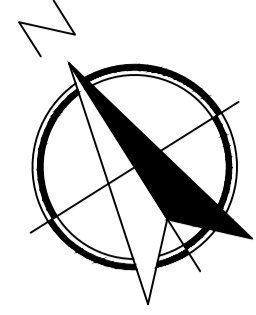


PRELIMINARY DESIGN FOR TENDER

WMSS-MAT-PR-0003 SERIES - MATERIAL LISTS										
WMSS-GAR-PR-0002-01 - GENERAL ARRANGEMENT LAYOUT										
A	ISSUED FOR CLIENT REVIEW			PDV	RRR	OO	250725			
No	Revision	Note: * indicates signatures on original issue of drawing or last revision of drawing			Drawn	Checked	Approved	Date	REFERENCE DRAWINGS	



Drawn	P. DELFIN	Designer	M. MOSTAFAVEYPOUR	Project	WEST MOKOAN SOLAR FARM 220/33kV SUBSTATION
Checked	R. REYES			Title	GENERAL ARRANGEMENT ELEVATION A-A
Approved	O. OSTOVAR			Scale	1:100
Date	25/07/2025			Original Size	A1
				Drawing No:	WMSS-GAR-PR-0002-03
				Rev:	A



LEGEND:

- SECURITY FENCE
- INDICATIVE EXTERNAL ROAD
- FIRE EXPOSURE ZONE
- STRUNG BUS
- FOUNDATION
- UNDERGROUND CABLE CULVERT
- CABLE PITS
- LIGHTING MOUNTED TO LIGHTNING MAST
- BASE LINE MARKER
- OIL CONTAINMENT DRAIN
- OS OIL SEPARATOR
- LCP LOCAL CONTROL PANEL
- O/A OVERALL
- CL CENTER LINE
- EQ EQUIPMENT
- M MARSHALLING BOX

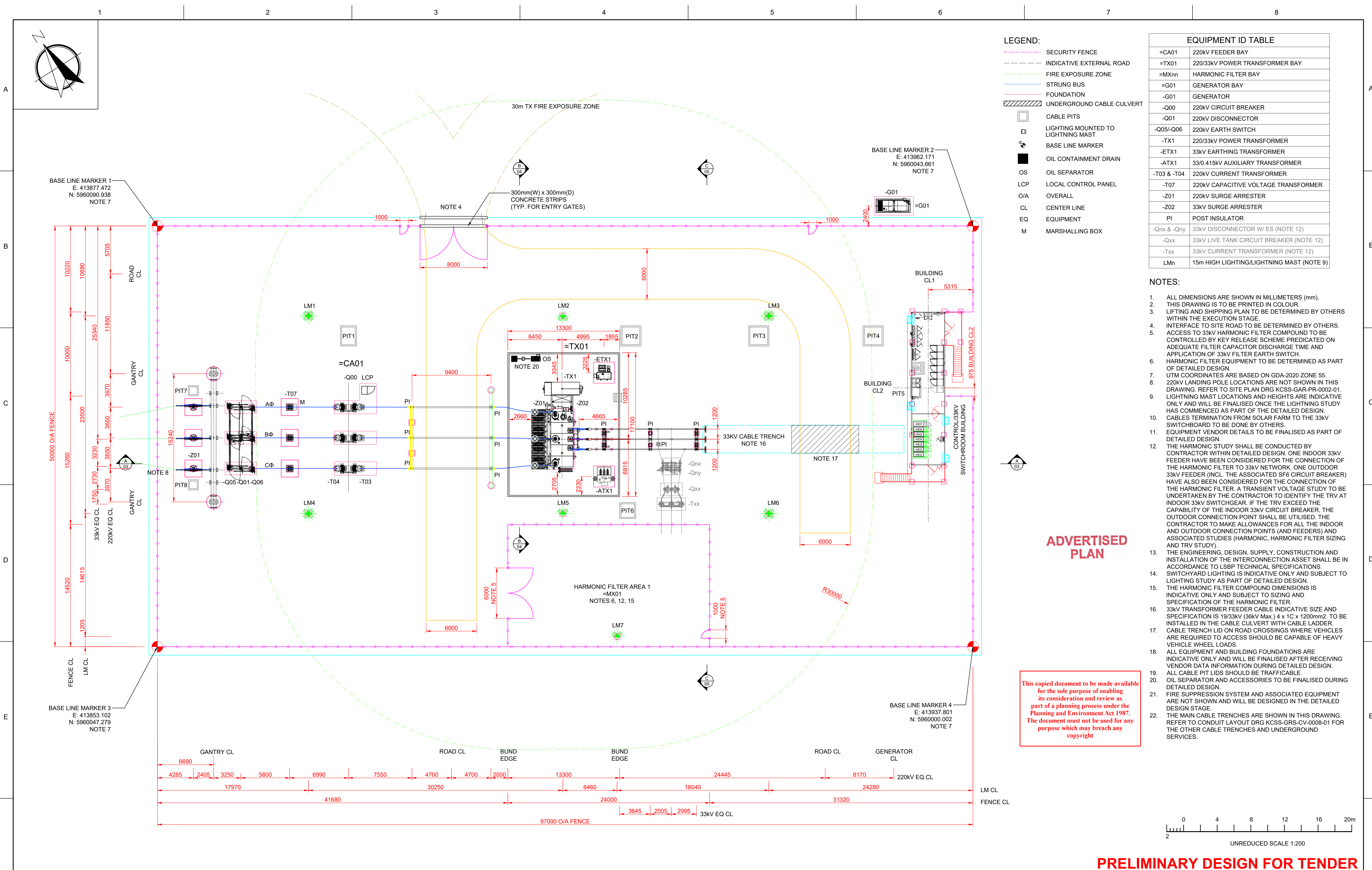
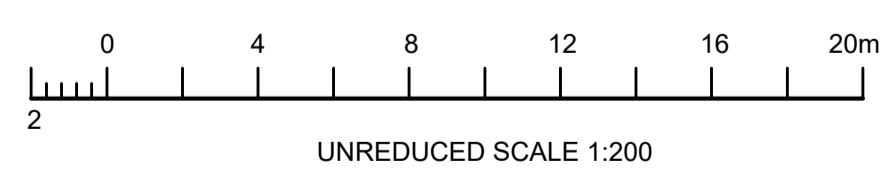
EQUIPMENT ID TABLE

=CA01	220kV FEEDER BAY
=TX01	220/33kV POWER TRANSFORMER BAY
=MXnn	HARMONIC FILTER BAY
=G01	GENERATOR BAY
-G01	GENERATOR
-Q00	220kV CIRCUIT BREAKER
-Q01	220kV DISCONNECTOR
-Q05/-Q06	220kV EARTH SWITCH
-TX1	220/33kV POWER TRANSFORMER
-ETX1	33kV EARTHING TRANSFORMER
-ATX1	33/0.415kV AUXILIARY TRANSFORMER
-T03 & -T04	220kV CURRENT TRANSFORMER
-T07	220kV CAPACITIVE VOLTAGE TRANSFORMER
-Z01	220kV SURGE ARRESTER
-Z02	33kV SURGE ARRESTER
PI	POST INSULATOR
-Qnx & -Qny	33kV DISCONNECTOR W/ ES (NOTE 12)
-Qxx	33kV LIVE TANK CIRCUIT BREAKER (NOTE 12)
-Txx	33kV CURRENT TRANSFORMER (NOTE 12)
LMn	15m HIGH LIGHTING/LIGHTNING MAST (NOTE 9)

- NOTES:**
- ALL DIMENSIONS ARE SHOWN IN MILLIMETERS (mm).
 - THIS DRAWING IS TO BE PRINTED IN COLOUR.
 - LIFTING AND SHIPPING PLAN TO BE DETERMINED BY OTHERS WITHIN THE EXECUTION STAGE.
 - INTERFACE TO SITE ROAD TO BE DETERMINED BY OTHERS.
 - ACCESS TO 33kV HARMONIC FILTER COMPOUND TO BE CONTROLLED BY KEY RELEASE SCHEME PREDICATED ON ADEQUATE FILTER CAPACITOR DISCHARGE TIME AND APPLICATION OF 33kV FILTER EARTH SWITCH.
 - HARMONIC FILTER EQUIPMENT TO BE DETERMINED AS PART OF DETAILED DESIGN.
 - UTM COORDINATES ARE BASED ON GDA-2020 ZONE 55.
 - 220kV LANDING POLE LOCATIONS ARE NOT SHOWN IN THIS DRAWING. REFER TO SITE PLAN DRG KCSS-GAR-PR-0002-01.
 - LIGHTNING MAST LOCATIONS AND HEIGHTS ARE INDICATIVE ONLY AND WILL BE FINALISED ONCE THE LIGHTNING STUDY HAS COMMENCED AS PART OF THE DETAILED DESIGN.
 - CABLES TERMINATION FROM SOLAR FARM TO THE 33kV SWITCHBOARD TO BE DONE BY OTHERS.
 - EQUIPMENT VENDOR DETAILS TO BE FINALISED AS PART OF DETAILED DESIGN.
 - THE HARMONIC STUDY SHALL BE CONDUCTED BY CONTRACTOR WITHIN DETAILED DESIGN. ONE INDOOR 33kV FEEDER HAVE BEEN CONSIDERED FOR THE CONNECTION OF THE HARMONIC FILTER TO 33kV NETWORK. ONE OUTDOOR 33kV FEEDER (INCL. THE ASSOCIATED SF6 CIRCUIT BREAKER) HAVE ALSO BEEN CONSIDERED FOR THE CONNECTION OF THE HARMONIC FILTER. A TRANSIENT VOLTAGE STUDY TO BE UNDERTAKEN BY THE CONTRACTOR TO IDENTIFY THE TRV AT INDOOR 33kV SWITCHGEAR. IF THE TRV EXCEED THE CAPABILITY OF THE INDOOR 33kV CIRCUIT BREAKER, THE OUTDOOR CONNECTION POINT SHALL BE UTILISED. THE CONTRACTOR TO MAKE ALLOWANCES FOR ALL THE INDOOR AND OUTDOOR CONNECTION POINTS (AND FEEDERS) AND ASSOCIATED STUDIES (HARMONIC, HARMONIC FILTER SIZING AND TRV STUDY).
 - THE ENGINEERING, DESIGN, SUPPLY, CONSTRUCTION AND INSTALLATION OF THE INTERCONNECTION ASSET SHALL BE IN ACCORDANCE TO LSBP TECHNICAL SPECIFICATIONS.
 - SWITCHYARD LIGHTING IS INDICATIVE ONLY AND SUBJECT TO LIGHTING STUDY AS PART OF DETAILED DESIGN.
 - THE HARMONIC FILTER COMPOUND DIMENSIONS IS INDICATIVE ONLY AND SUBJECT TO SIZING AND SPECIFICATION OF THE HARMONIC FILTER.
 - 33kV TRANSFORMER FEEDER CABLE INDICATIVE SIZE AND SPECIFICATION IS 19/33kV (36kV Max.) 4 x 1C x 1200mm². TO BE INSTALLED IN THE CABLE CULVERT WITH CABLE LADDER.
 - CABLE TRENCH LID ON ROAD CROSSINGS WHERE VEHICLES ARE REQUIRED TO ACCESS SHOULD BE CAPABLE OF HEAVY VEHICLE WHEEL LOADS.
 - ALL EQUIPMENT AND BUILDING FOUNDATIONS ARE INDICATIVE ONLY AND WILL BE FINALISED AFTER RECEIVING VENDOR DATA INFORMATION DURING DETAILED DESIGN.
 - ALL CABLE PIT LIDS SHOULD BE TRAFFICABLE.
 - OIL SEPARATOR AND ACCESSORIES TO BE FINALISED DURING DETAILED DESIGN.
 - FIRE SUPPRESSION SYSTEM AND ASSOCIATED EQUIPMENT ARE NOT SHOWN AND WILL BE DESIGNED IN THE DETAILED DESIGN STAGE.
 - THE MAIN CABLE TRENCHES ARE SHOWN IN THIS DRAWING. REFER TO CONDUIT LAYOUT DRG KCSS-GS-CV-0008-01 FOR THE OTHER CABLE TRENCHES AND UNDERGROUND SERVICES.

This copied document to be made available for the sole purpose of enabling its consideration and review as part of a planning process under the Planning and Environment Act 1987. The document must not be used for any purpose which may breach any copyright

ADVERTISED PLAN



No	Revision	Note: * indicates signatures on original issue of drawing or last revision of drawing	Drawn	Checked	Approved	Date
A	ISSUED FOR CLIENT REVIEW		PDV	RRR	OO	25/07/25

REFERENCE DRAWINGS

KCSS-FOU-ST-0009-01	- FOOTING SETOUT PLAN
KCSS-EWS-CV-0006-01	- PLATFORM EARTHWORKS SETOUT PLAN
KCSS-GAR-PR-0002-03-06	- GENERAL ARRANGEMENT ELEVATIONS
KCSS-GAR-PR-0002-01	- SITE PLAN LAYOUT
KCSS-SLD-PR-0001-01	- PLANT SINGLE LINE DIAGRAM

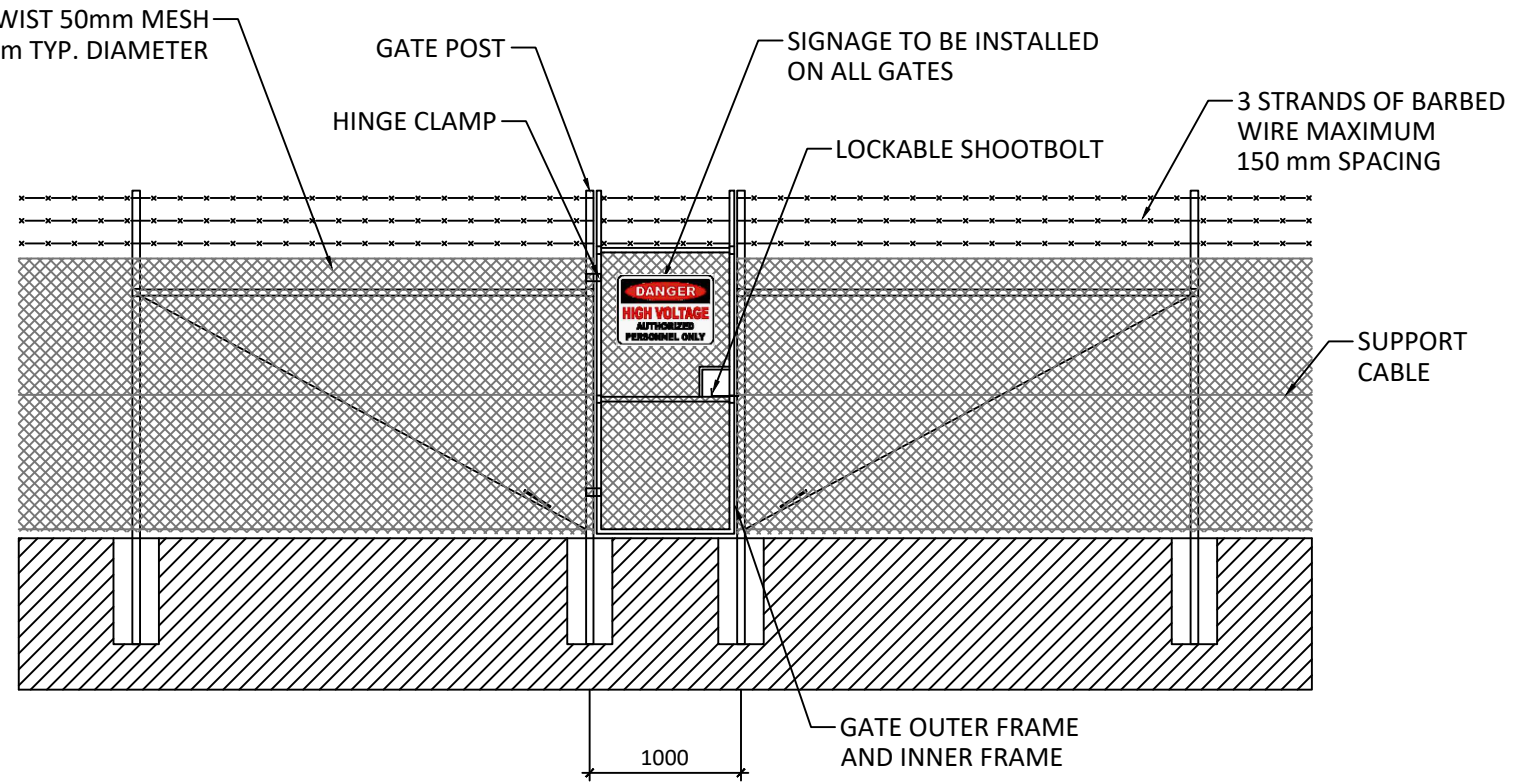
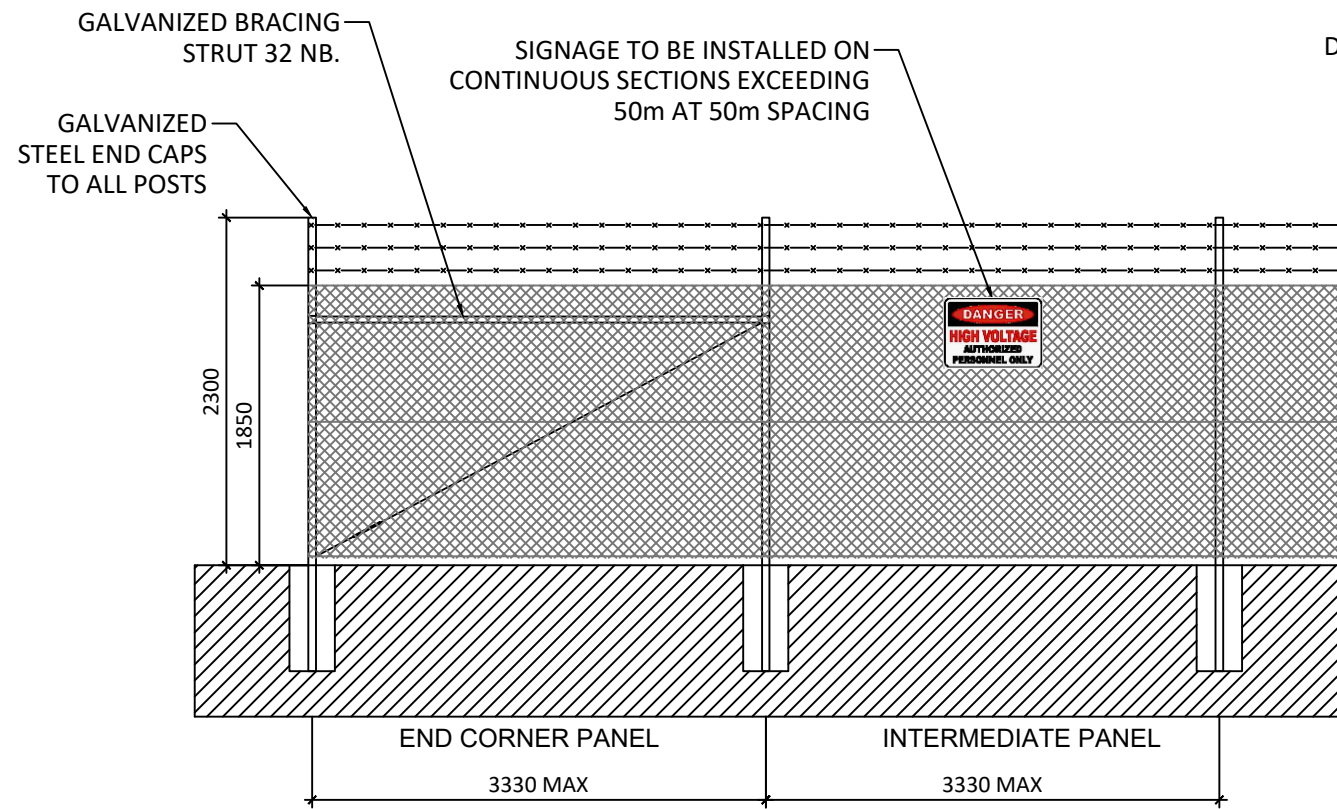
Drawn	P. DELFIN	Designer	M. MOSTAFAVEYPOUR
Checked	R. REYES		
Approved	O. OSTOVAR	RPEV No.	
Date	25/07/2025		
Scale	1:200	This Drawing must not be used for Construction unless signed as Approved	Original Size A1

PRELIMINARY DESIGN FOR TENDER

KENNEDY'S CREEK SOLAR FARM
220/33kV SUBSTATION
GENERAL ARRANGEMENT
LAYOUT

Drawing No: **KCSS-GAR-PR-0002-02** Rev: **A**

ADVERTISED PLAN

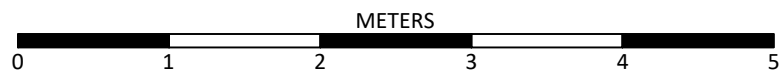


TYPICAL FENCING

TYPICAL PERSONAL ENTRY GATE OPENING

This copied document to be made available for the sole purpose of enabling its consideration and review as part of a planning process under the Planning and Environment Act 1987. The document must not be used for any purpose which may breach any copyright

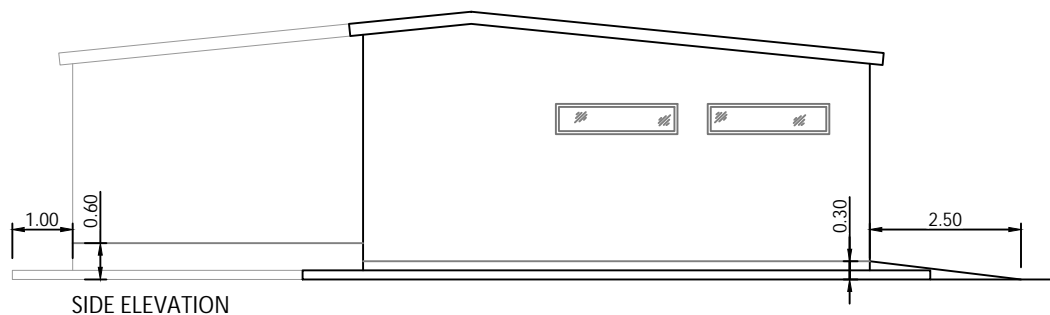
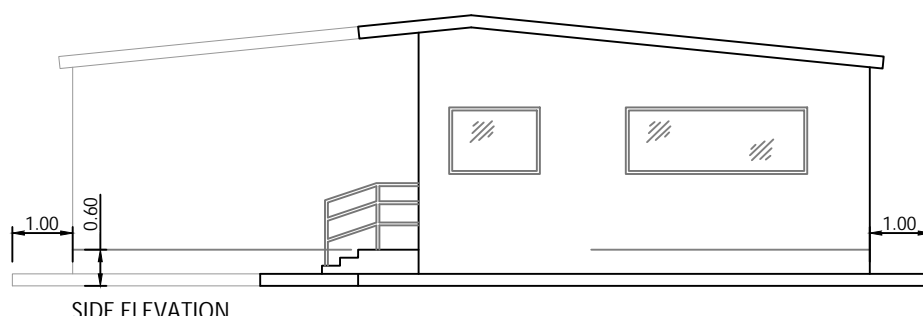
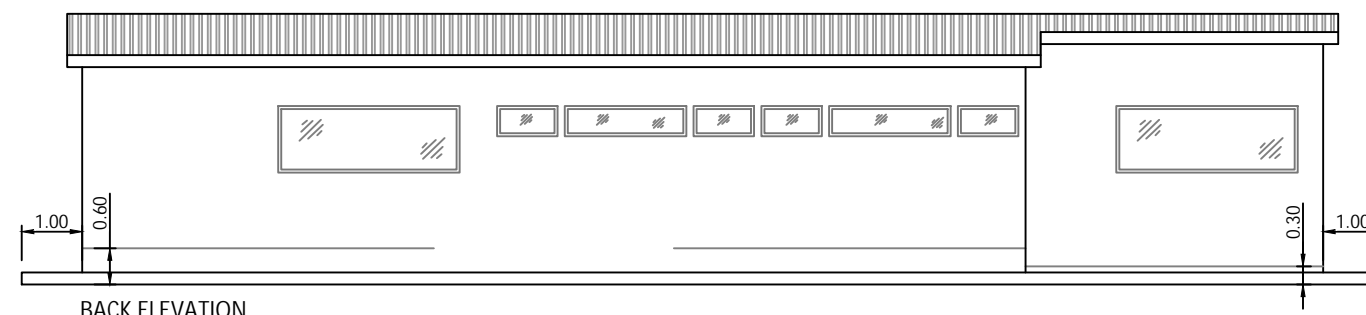
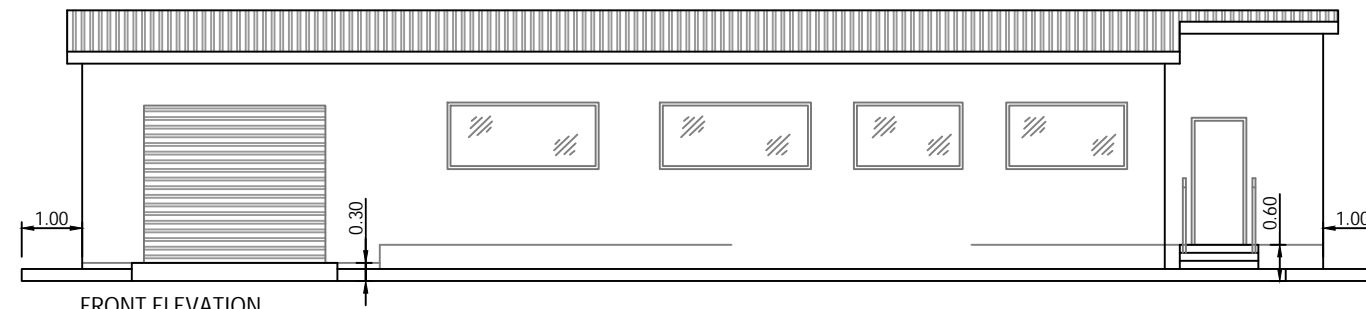
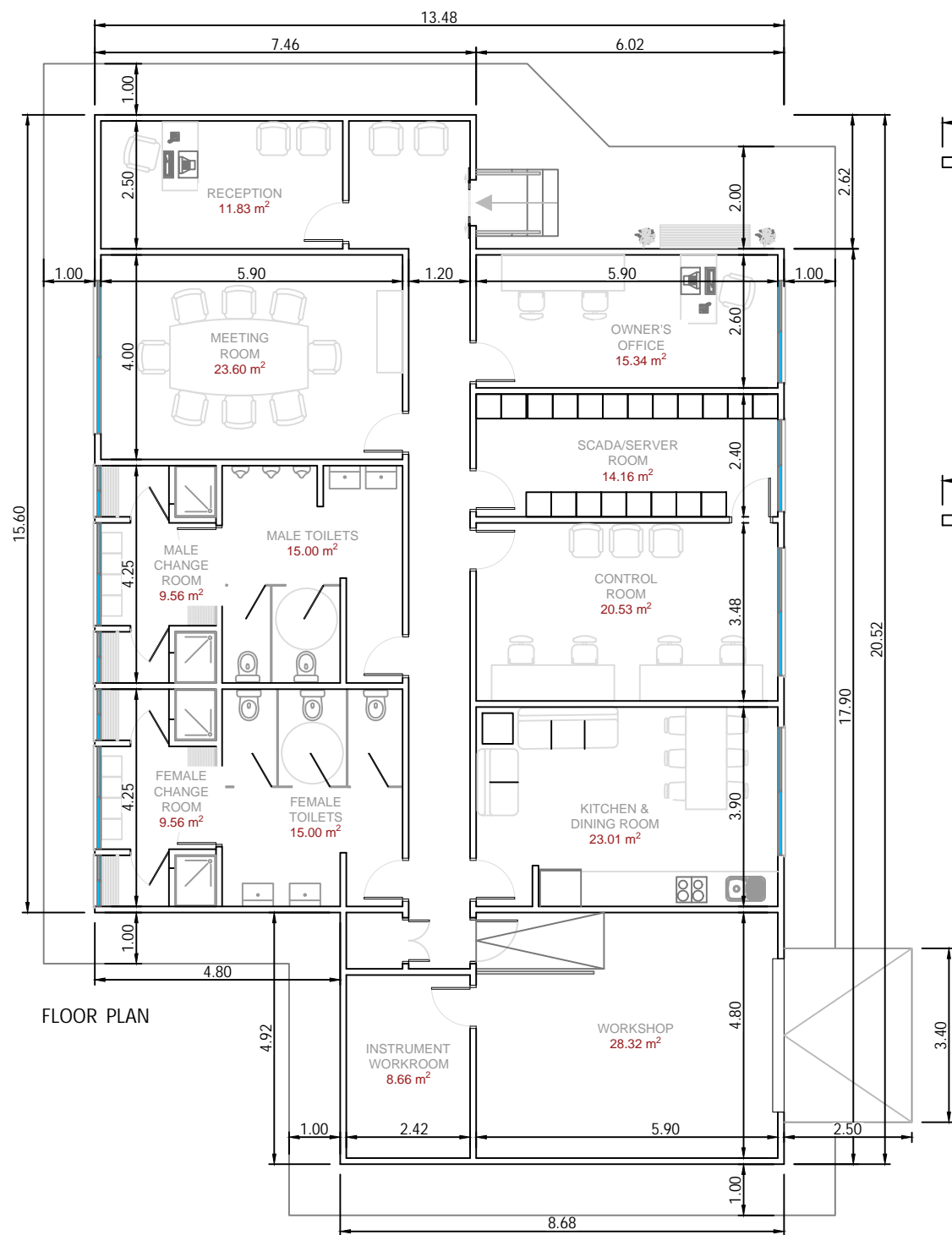
A3 - (420 x 297)mm



Chain Wire Fence with Barbed Wire Details			
DA			12.11.19
DRAWN	CHECKED	APPROVED	DATE
Paper Size: A3	Scale: 1:50@A3	Sheet: 1	
DRAWING NUMBER: CWW_01		STATUS: Preliminary	
Lightsource Development Services Australia Pty Ltd Level 9 401 Collins Street, Melbourne, 3000 General: +61 (3) 9071 0326 Web: www.lightsourcebp.com info@lightsourcebp.com			

THIS DOCUMENT IS THE PROPERTY OF LIGHTSOURCE DEVELOPMENT SERVICES AUSTRALIA PTY LTD IT IS PROHIBITED TO REPRODUCE IT FOR OTHER PURPOSES WITHOUT AUTHORIZATION IN WRITING

ADVERTISED PLAN

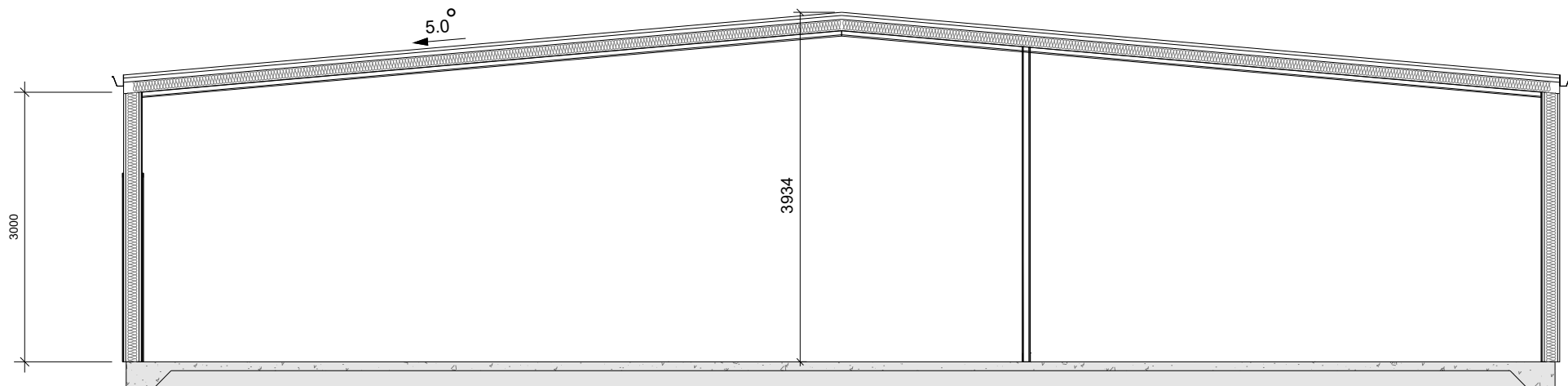


This copied document to be made available for the sole purpose of enabling its consideration and review as part of a planning process under the Planning and Environment Act 1987. The document must not be used for any purpose which may breach any copyright

- NOTES**
- 1.- All measurements are indicative and in meters
 - 2.- Toilets and changing rooms as per local requirements

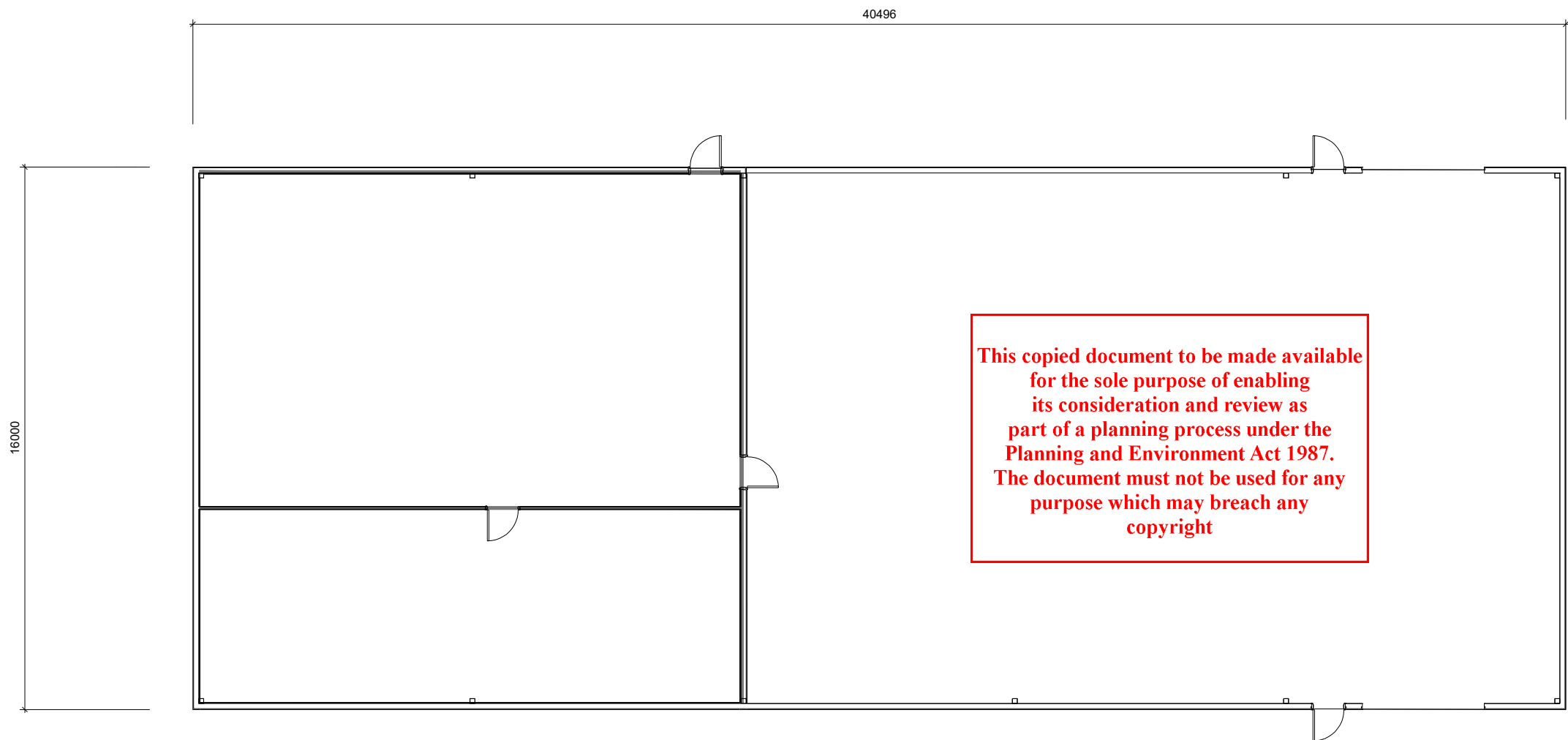
Amenities Building			
DA			03.10.18
DRAWN	CHECKED	APPROVED	DATE
Paper Size: A3	Scale: 1:125@A3	Sheet: 1	
DRAWING NUMBER: AMB_01		STATUS: Preliminary	
Lightsource Development Services Australia Pty Ltd Level 9 401 Collins Street, Melbourne, 3000 General: +61 (3) 9071 0326 Web: www.lightsourcebp.com info@lightsourcebp.com			

A3 - (420 x 297)mm



1 SECTION
N.T.S

**ADVERTISED
PLAN**



**This copied document to be made available
for the sole purpose of enabling
its consideration and review as
part of a planning process under the
Planning and Environment Act 1987.
The document must not be used for any
purpose which may breach any
copyright**

2 FLOOR
N.T.S

Rev	Date	Comments	Dwn	Chkd

JI			29.08.2024
DRAWN	CHECKED	APPROVED	DATE

PROJECT NAME & ADDRESS:
Location:
BENELLA, VICTORIA

NOTES:
-
-
-
-

Paper Size: A3	Scale: N.T.S	Sheet: 1
-------------------	-----------------	-------------

CAPACITY:

DRAWING TITLE:
AUS_EDP_Storage Building _00

DRAWING NUMBER: EDP	STATUS: Preliminary
------------------------	------------------------



Lightsource Development Limited,
7th Floor, 33 Holborn, London, EC1N 2HU
General: +44 (0) 333 200 0755
Web: www.lightsourcebp.com
info@lightsourcebp.com

ISO full bleed A3 (420.00 x 297.00 MM)-V.4.2

THIS DOCUMENT IS THE PROPERTY OF LIGHTSOURCE RENEWABLE DEVELOPMENT LTD
IT IS PROHIBITED TO REPRODUCE IT FOR OTHER PURPOSES WITHOUT AUTHORIZATION IN WRITING

ADVERTISED
PLAN

The advertisement is a rectangular sign with a white top half and a bottom half split into orange and yellow sections. It features the 'lightsource bp' logo in orange and green text, the 'lightsource' logo (two overlapping circles) in orange and yellow, and the 'bp' logo (a green and yellow flower) with 'bp' in green text. A red-bordered box contains a disclaimer. The bottom left section is orange and contains contact information for the O&M Manager. The bottom right section is yellow.

lightsource bp

This copied document to be made available for the sole purpose of enabling its consideration and review as part of a planning process under the Planning and Environment Act 1987. The document must not be used for any purpose which may breach any copyright

Welcome to West Mokoan Solar Farm

O&M Manager
T. 1300 873 575
Level 29, 420 George St Sydney NSW 2000
<https://www.lightsourcebp.com/au/projects/west-mokoan-solar-farm/>

0.7m

1.4 m