

## ADVERTISED PLAN

This copied document to be made available for the sole purpose of enabling its consideration and review as part of a planning process under the Planning and Environment Act 1987. The document must not be used for any purpose which may breach any copyright

### **85-93 Wilson Street & 10-16A Alverna Grove, Brighton** Waste Management Plan



250040WMP001E-F.docx

11 November 2025

# onemilegrid

ABN: 79 168 115 679

(03) 9939 8250  
Wurundjeri Woiworung Country  
56 Down Street  
**COLLINGWOOD, VIC 3066**  
[www.onemilegrid.com.au](http://www.onemilegrid.com.au)



## DOCUMENT INFORMATION

<b>Prepared for</b>	Knowles Group		
<b>File Name</b>	250040WMP001E-F.docx	<b>Report Date</b>	11 November 2025
<b>Prepared by</b>	LMH	<b>Reviewed by</b>	JD

**onemilegrid** operates from Wurundjeri Woiworung Country of the Kulin nation. We acknowledge and extend our appreciation to the Wurundjeri People, the Traditional Owners of the land. We pay our respects to leaders and Elders past, present and emerging for they hold the memories, the traditions, the culture, and the hopes of all Wurundjeri Peoples.

© One Mile Grid Pty Ltd. This document has been prepared by **onemilegrid** for the client as per the terms of engagement. It may not be modified or altered, copied, reproduced, sold or transferred in whole or in part in any format to any person other than by agreement. **onemilegrid** does not assume responsibility or liability to any third party arising out of misuse of this document.

## CONTENTS

1	INTRODUCTION.....	5
2	PURPOSE .....	5
3	POLICIES, STRATEGIES AND GUIDELINES .....	6
3.1	Recycling Victoria – Best Practice Waste Management .....	6
3.2	Sustainability Victoria.....	6
4	EXISTING SITE CONDITIONS.....	7
5	PROPOSED DEVELOPMENT.....	8
6	WASTE MANAGEMENT .....	8
6.1	General.....	8
6.2	Waste Streams.....	9
6.2.1	Garbage .....	9
6.2.2	Organic (Food) Waste .....	9
6.2.3	Recycling .....	9
6.2.4	Glass Recycling.....	10
6.2.5	Container Deposit Scheme (CDS) .....	10
6.2.6	Green Waste .....	10
6.2.7	Hard Waste.....	11
6.2.8	Electronic Waste (E-Waste) .....	11
6.2.9	Medical Waste.....	11
6.2.10	Clinical Waste .....	11
6.2.11	Sanitary Waste .....	11
6.2.12	Secure Document Disposal.....	12
6.2.13	Grease Trap.....	12
7	WASTE GENERATION .....	13
7.1	Adopted Waste Generation Rates .....	13
7.2	Expected Waste Generation .....	13
8	BIN REQUIREMENTS .....	14
8.1	Bin Provision and Specifications.....	14
8.1.1	In-Premise.....	14
8.1.2	Bulk Waste Bins.....	14
8.2	Bin Storage .....	15
8.3	Waste Chute Rooms.....	16
8.4	Bin Collection .....	16
8.5	Bin Cleaning .....	16
8.6	Signage .....	17
9	MANAGEMENT.....	18
9.1	General.....	18
9.2	Staff Information .....	18
9.3	Noise Control.....	18
10	OCCUPATIONAL HEALTH & SAFETY RESPONSIBILITIES.....	19
11	CONTACT INFORMATION.....	19
11.1	Council .....	19
11.2	Contractors.....	19
11.3	Others .....	20

## TABLES

Table 1	Waste Generation Rates.....	13
Table 2	Expected Waste Generation (L/week).....	13
Table 3	Bin Provision .....	14
Table 4	Bin Specifications.....	14
Table 5	Bin Colours .....	14

## FIGURES

Figure 1	Resource Flows in a Circular Economy .....	6
Figure 2	Site Location.....	7
Figure 3	Bin Storage Room and Collection Details .....	9
Figure 4	Bin Storage Room Layout .....	15
Figure 5	Example Waste Signage .....	17

## APPENDICES

<b>APPENDIX A</b>	<b>SWEPT PATH DIAGRAM</b>
<b>APPENDIX B</b>	<b>BIN STORAGE AREA SCALED PLANS</b>

## 1 INTRODUCTION

---

**onemilegrid** has been requested by Knowles Group to prepare a Waste Management Plan for the proposed aged care facility at 85-93 Wilson Street & 10-16A Alverna Grove, Brighton.

The preparation of this management plan has been undertaken with due consideration of the Sustainability Victoria Better Practice Guide for Waste Management and Recycling in Multi-unit Developments and relevant Council documentation.

## 2 PURPOSE

---

The purpose of the waste management plan is to:

- Demonstrate the development of an effective waste management system that is compatible with the design of the proposed aged care facility and the adjacent built environment. An effective waste management system is hygienic, clean and tidy, minimises waste going to landfill, and maximises recycling;
- Provide a waste management system that is supported by scale drawings to ensure the final design and construction of the development is compliant with the WMP and is verifiable;
- Form a document that achieves effective communication of the waste management system so that all stakeholders can be properly informed of its design, and the roles and responsibilities involved in its implementation. Stakeholders are defined (but not limited to): the operator, staff, Council, neighbours and collection contractors;
- Ensure residents, staff and visitors are not disadvantaged in their access to recycling and other responsible waste management options;
- Avoid existing legacy issues that plague many developments due to poor design and insufficient consideration for waste management; and
- Improve outcomes for compliance with regulatory tools and state Planning, such as:
  - + Recycling Victoria;
  - + Town planning Permits;
  - + Bayside Planning scheme;
  - + Clause 19.03-5 of the state planning policy framework; and
  - + Direction 6.7 of Plan Melbourne.

### 3 POLICIES, STRATEGIES AND GUIDELINES

#### 3.1 Recycling Victoria – Best Practice Waste Management

Best Practice Waste Management is an initiative designed to reduce the amount of waste generated, through encouraging a change of behaviour and action on waste management and moreover recycling.

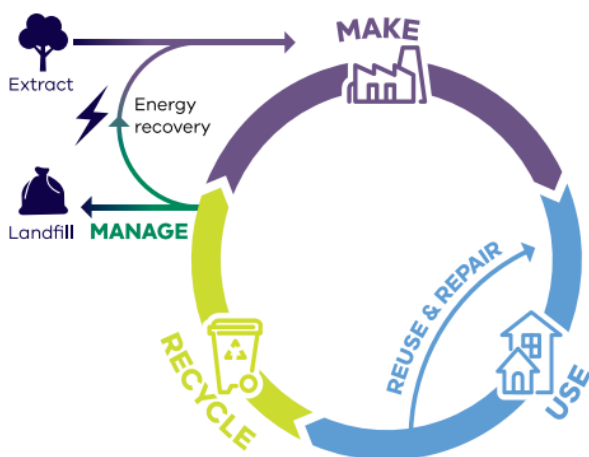
The benefits of reducing waste generation are far reaching and have been identified as significantly important by Council and the Victorian Government.

Recycling Victoria: A New Economy is a policy and 10-year action plan, prepared by the Victoria Government, to “deliver a cleaner, greener Victoria, with less waste and pollution, better recycling, more jobs and a stronger economy”.

Four overarching goals have been identified in order to achieve a circular economy in relation to waste, as below:

1. MAKE – Design to last, repair and recycle;
2. USE – Use products to create more value;
3. RECYCLE – Recycle more resources;
4. MANAGE – Reduce harm from waste and pollution.

**Figure 1 Resource Flows in a Circular Economy**



#### 3.2 Sustainability Victoria

Sustainability Victoria has developed the Guide to Better Practice for Waste Management and Recycling in Multi-Unit Developments (MUDs) to improve waste management practices and increase recycling in MUDs and commercial developments.

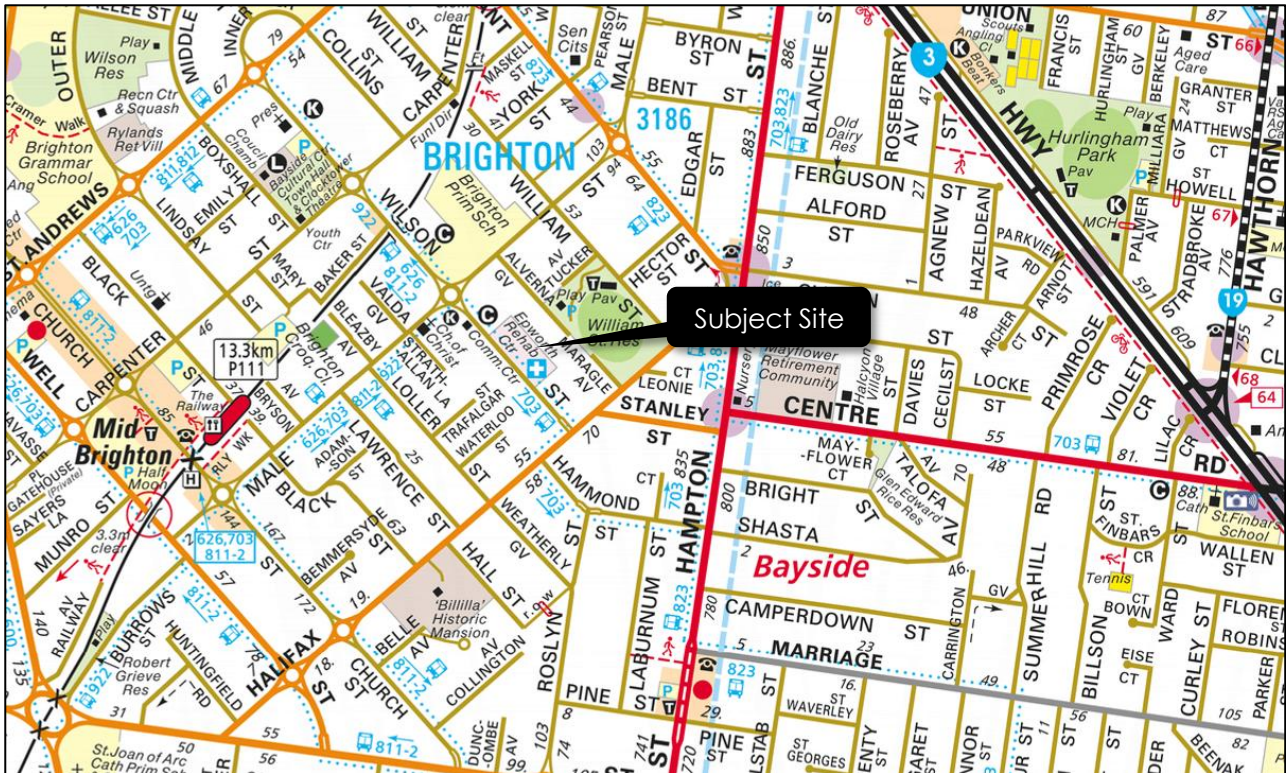
This guide is a stand-alone resource providing guidance for architects, building designers, developers, building managers, residents, planners, and waste management officers to incorporate effective waste and recycling systems into all stages of a development's life.

It outlines essential points of consideration when designing a waste management system for medium or high-density residential, mixed-use, and precinct-scale developments, with some guidance and better practice options applicable to a broader range of developments.

## 4 EXISTING SITE CONDITIONS

The subject site is addressed as 85-93 Wilson Street & 10-16A Alverna Grove, Brighton, and is located approximately midblock between Halifax Street and Male Street, as shown in Figure 2.

**Figure 2 Site Location**



Copyright Melway Publishing

The site provides frontages to Wilson Street and Alverna Grove of 73.32 m and 48.82 m respectively.

The site addressed 85-93 Wilson Street is currently vacant, having been recently demolished, however was previously occupied by Epworth Healthcare as a rehabilitation centre. It is understood the previous use offered 67 beds and provided care for orthopaedic, cardiac and neurological health issues, serviced by a total of 49 parking spaces across the site.

The site addressed 16A Alverna Grove is occupied by a single dwelling, and the sites addressed 10-14 Alverna Grove are currently vacant, though 10 & 14 Alverna Grove were previously occupied by single dwellings which have recently been demolished.

Land use in the immediate vicinity of the site is generally residential in nature, though includes Bambini Early Learning Centre located north-west, William Street Reserve to the east, and Tennis Bayside to the west.

## 5 PROPOSED DEVELOPMENT

---

It is proposed to develop the site for the purposes of an aged care development comprising 176 rooms, each providing one bed, providing capacity for 176 residents. The development will consist of five levels, including a basement level car park.

General pedestrian and vehicle access will be provided via the Wilson Street frontage, with secondary pedestrian access via Alverna Grove. Vehicle access to the site is proposed to be provided via three crossovers to Wilson Street. Vehicle access to the basement ramp and car park is located at the north-west end of the frontage, with separate entry and exit crossovers for the porte-cochere further south-east.

The loading dock will be provided within the basement, capable of accommodating vehicles up to the size of a 6.4 m small rigid vehicle (SRV).

## 6 WASTE MANAGEMENT

---

### 6.1 General

It is proposed to utilise a private contractor to manage the collection and disposal of all waste streams associated with the development.

Smaller bins will be placed throughout the residential aged care facility to ensure the separation of waste streams at the time of disposal. Staff or the appointed cleaning contractor will be responsible for emptying these bins into the larger bins provided in the bin storage room.

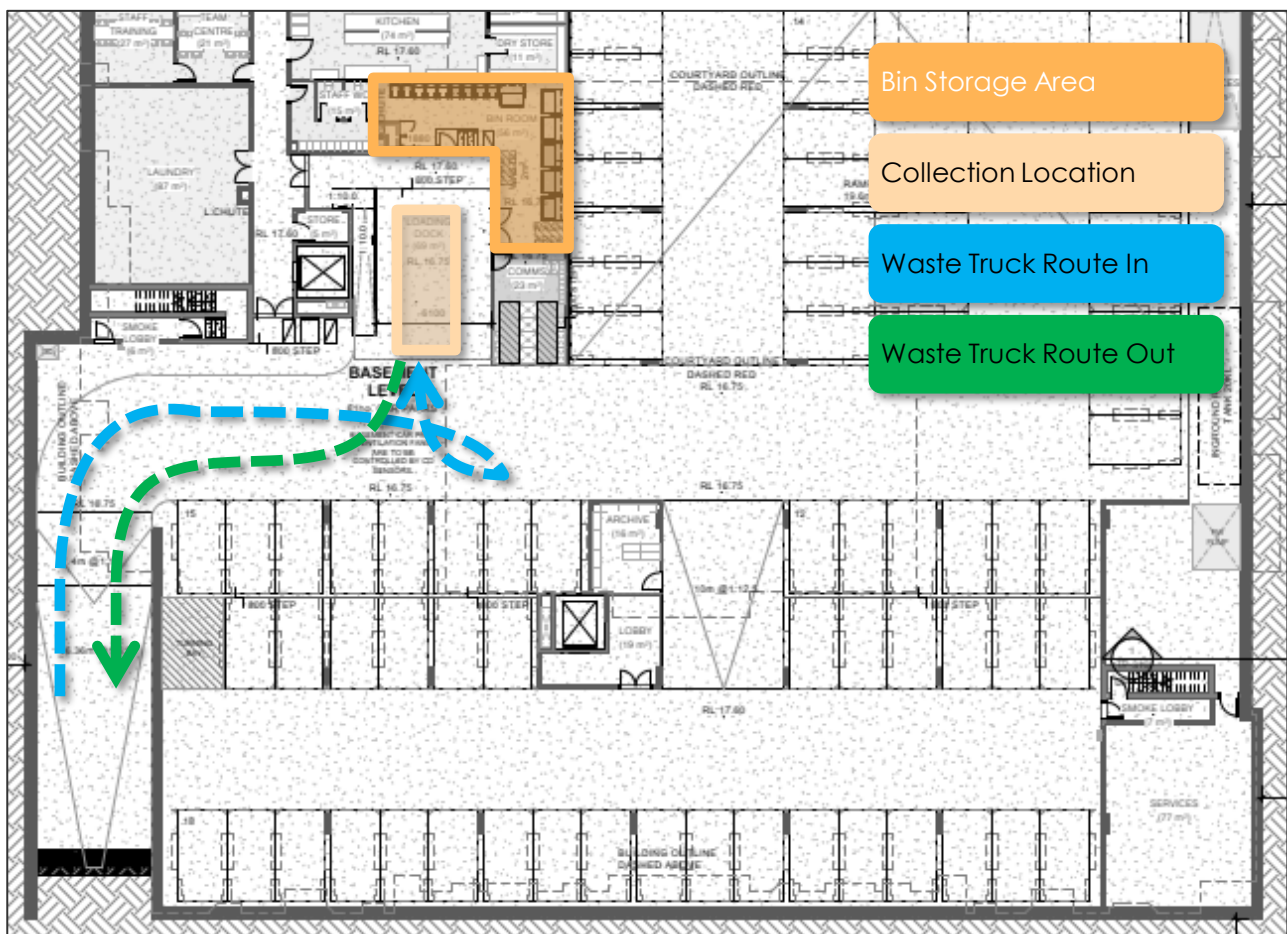
A chute system will be utilised for garbage.

Bulk waste bins will be stored within the dedicated bin storage room adjacent to the loading bay at the basement level. On collection days, the private contractor will enter the site in a forward direction using a 6.4 metre rear-lift truck, and manoeuvre within the car parking aisle to reverse into the loading bay. The bins will then be collected directly from the bin storage room by the private contractor and returned immediately following collection. The private contractor will then exit the site in a forward direction.

Cytotoxic and clinical waste (medical, infectious, sharps, chemical, pharmaceutical, radioactive, etc.) shall be managed in accordance with the Industry Code of Practice for the Management of Biohazardous Waste (including Clinical & Related wastes).

The collection location and expected transfer route is shown in Figure 3.

**Figure 3 Bin Storage Room and Collection Details**



## 6.2 Waste Streams

### 6.2.1 Garbage

The garbage stream comprises of non-recyclable material which is to be disposed of in landfill, and is one of the four primary waste streams identified by Recycling Victoria and forms part of the standard commercial collection system.

### 6.2.2 Organic (Food) Waste

A proportion of waste generated by the proposed use is anticipated to comprise of organic (food) waste, which is one of the four primary waste streams identified by Recycling Victoria and forms part of the standard commercial collection system.

### 6.2.3 Recycling

The commingled recycling stream is a mixed material stream consisting of paper, cardboard, cans, plastics, and glass (where not collected as part of a separate glass collection service) and is one of the four primary waste streams identified by Recycling Victoria and forms part of the standard commercial collection system.

## 6.2.4 Glass Recycling

A proportion of waste generated by the proposed use is anticipated to comprise of glass, which is one of the four primary waste streams identified by Recycling Victoria and forms part of the standard commercial collection system.

It is understood that Bayside City Council may transition to separate glass recycling collection by 2027, and at that time, it is recommended that this Waste Management Plan, and the private waste collection, be updated to include separate glass recycling.

Sufficient space is provided within the bin storage room for the provision of a glass recycling bin, if required, noting the provision of separate glass waste collection would result in the reduction of weekly recycling generation. Alternatively, the operator can collect and dispose of appropriate glass containers at one of the Container Deposit Scheme (CDS) depots (refer below), or within the recycling bin.

## 6.2.5 Container Deposit Scheme (CDS)

On 1 November 2023, Victoria's Container Deposit Scheme (CDS) commenced, which marked a significant milestone towards Victoria achieving its Circular Economy goal.

The CDS rewards Victorians with a 10 c refund for all eligible cans, cartons and bottles that are returned. Most aluminium, glass, plastic, and liquid paperboard (carton) drink containers, between 150 mL and 3 L are eligible, with a 10 c mark provided on the drink container label, often located near the barcode. Container lids are able to be kept on, as they can also be recycled.

There are multiple ways to receive the 10 c refund, including vouchers, which can be spent at participating shops, cash, electronic payment, and the option to donate the refund to charities and community groups.

The eligible containers can be returned to several different types of container refund points, in many locations across Victoria, with the number of locations expected to continue to grow. Typical refund points include the following:

- Reverse Vending Machines (RVMs) – Typically located in shopping centre and supermarket car parks, eligible containers are inserted into the machine, where the containers are scanned and verified;
- Depots – Larger refund points which typically offer a walk-in or drive-through services to get containers counted and refunded on the spot. Best suited for larger loads;
- Over the counter (OTC) – Some small businesses or organisations provide over-the-counter services, which essentially work like a miniature depot; and
- Pop-ups – Zone operators may offer pop-up services or events, that will have set times and locations that drinks containers can be returned.

The locations of the CDS refund points are provided at <https://cdsvic.org.au/locations>.

Staff, residents and visitors should be encouraged to contribute to the CDS, by the provision of specific CDS bins throughout the building to assist in separating eligible containers, with staff appointed by the operator to regularly take the containers for to a refund point.

## 6.2.6 Green Waste

It is expected that any maintenance and gardening undertaken on the site will be managed by a contractor appointed by the operator. The appointed contractor will be responsible for the disposal of any green waste accumulated during the course of their duties.

### **6.2.7 Hard Waste**

It is anticipated that hard waste generation will be minimal considering the proposed residential aged care use. Regardless, hard waste services will be provided by the private contractor on an as-needed basis, under the management of the operator.

Hard waste will be stored within the bin storage room, with approximately 2 m<sup>2</sup> provided for storage of hard waste/bulky items.

Additional to the above, hard waste may be disposed of independently by the operator, at Council's Recycling Centre/Transfer Station.

### **6.2.8 Electronic Waste (E-Waste)**

E-waste includes all manner of electronic waste, such as televisions, computers, cameras, phones, household electronic equipment, batteries and light bulbs. E-waste contains valuable materials that can be recovered and reused such as tin, nickel, zinc, aluminium, copper, silver and gold.

On 1<sup>st</sup> July 2019, the disposal of E-waste to landfill was banned by the Victorian Government.

A large number of e-waste collection points are available in Victoria and private contractors are equipped with the resources to undertake E-waste collections.

A 120 litre E-waste bin will be provided within the bin storage area for use by staff and visitors. The owner's corporation will arrange for the disposal of E-waste at an appropriate collection point as required.

### **6.2.9 Medical Waste**

Cytotoxic and other medical waste (infectious, sharps, chemical, pharmaceutical, radioactive, etc.) shall be managed in accordance with the Industry Code of Practice for the Management of Biohazardous Waste (including Clinical & Related wastes).

The applicant has provided information that these waste streams will be collected daily by a separate contractor direct from treatment spaces. Therefore, it is not considered relevant to list the total waste generation or specific bin storage for these medical waste streams.

### **6.2.10 Clinical Waste**

Clinical waste streams in the context of an aged-care facility include those elements of waste generated in the process of healthcare and treatment not identified within the Medical Waste categories above.

This may include contaminated gloves, masks, bandages, needles, sanitary products, diapers, soiled bedding and anything else contaminated with blood or bodily fluids.

As identified above, a specific clinical waste service is proposed for this stream, undertaken by a specialist contractor.

### **6.2.11 Sanitary Waste**

Sanitary waste bins are to be provided within the toilets for the disposal of appropriate sanitary waste. Sanitary waste bins will be exchanged for a clean bin as required by a private sanitary waste contractor.

### **6.2.12 Secure Document Disposal**

Many businesses generate documents containing confidential information such as financial records, plans, contracts or personal data that should be disposed of in secure way to prevent breach of data or identity theft.

Small lockable bins will be provided throughout the office areas, for the disposal of secure documents. A lockable 120 litre bin is proposed within the bin storage room for the disposal of secure documents.

Collection of secure documents typically occurs using vans, with the bins collected and replaced with an empty bin.

### **6.2.13 Grease Trap**

Any grease traps associated with the site should be provided with regular maintenance, emptying and cleaning to prevent blockages and keep the system running efficiently.

The frequency of collection is highly dependent on the specific operation of the food and drink premises as well as the size and type of the grease trap provided. As such, it is recommended that an inspection and assessment be undertaken by a grease trap collection service upon construction of the residential aged care facility, to determine the recommended frequency of cleaning and collection.

## 7 WASTE GENERATION

### 7.1 Adopted Waste Generation Rates

Based on our experience with similar facilities, the following table waste rates have been established in Table 1.

**Table 1 Waste Generation Rates**

<i>Dwelling Type</i>	<i>Rate per Bed (L/Week)</i>
Garbage	75
Recycling	55
Organics	15
Clinical Waste	10
Secured Documents	Nominal
E-Waste	Nominal

### 7.2 Expected Waste Generation

Based on the above, the expected weekly waste generation is expected, detailed in Table 2.

**Table 2 Expected Waste Generation (L/week)**

<i>Waste Stream</i>	<i>No. of Beds</i>	<i>Rate per Bed</i>	<i>Total Waste</i>
Garbage	176	75	13,200
Recycling		55	9,680
Organics		15	2,640
Clinical Waste		10	1,760

It is understood that a 120-litre bin can be provided for each of secure documents and E-waste to be collected as needed.

## 8 BIN REQUIREMENTS

### 8.1 Bin Provision and Specifications

#### 8.1.1 In-Premise

Separate small waste bins will be provided within the residential aged care centre for each of the three primary waste streams (garbage, organics and recycling). Appropriate bin storage locations shall be provided throughout the development, for example within the kitchens or food preparation areas, and within each lodging room as required.

#### 8.1.2 Bulk Waste Bins

It is proposed to utilise a private contractor for all waste services associated with the proposed development. Consequently, the required bins are detailed in Table 3 below.

**Table 3 Bin Provision**

Stream	Total Waste (L/Week)	Bin Size (L)	Collection Frequency	Bins Required
Garbage	13,200	1,100	3 / Week	4 bins
Recycling	9,680	1,100	3 / Week	3 bins
Organics	2,640	240	3 / Week	4 bins
Clinical Waste	1,760	240	3 / Week	3 bins
Secured Documents	-	120	As required	1 bin
E-Waste	-	120	As required	1 bin
<b>Total</b>				<b>16 bins</b>

\* The total bin capacity is slightly less than the expected generation, and may require some minor compaction of waste

**Table 4 Bin Specifications**

Capacity	Width	Depth	Height	Area
120 litres	0.50 m	0.55 m	0.95 m	0.28 m <sup>2</sup>
240 litres	0.60 m	0.75 m	1.10 m	0.45 m <sup>2</sup>
660 litres	1.25 m	0.80 m	1.30 m	1.00 m <sup>2</sup>
1,100 litres	1.25 m	1.10 m	1.35 m	1.38 m <sup>2</sup>

Bins are to be colour coded to the Australian Standard (AS4123), as shown in Table 5 below.

**Table 5 Bin Colours**

Stream	Colour
Garbage	Red lid and dark green or black body
Commingled Recycling	Yellow lid and dark green or black body
Organics	Light Green lid and dark green or black body

## 8.2 Bin Storage

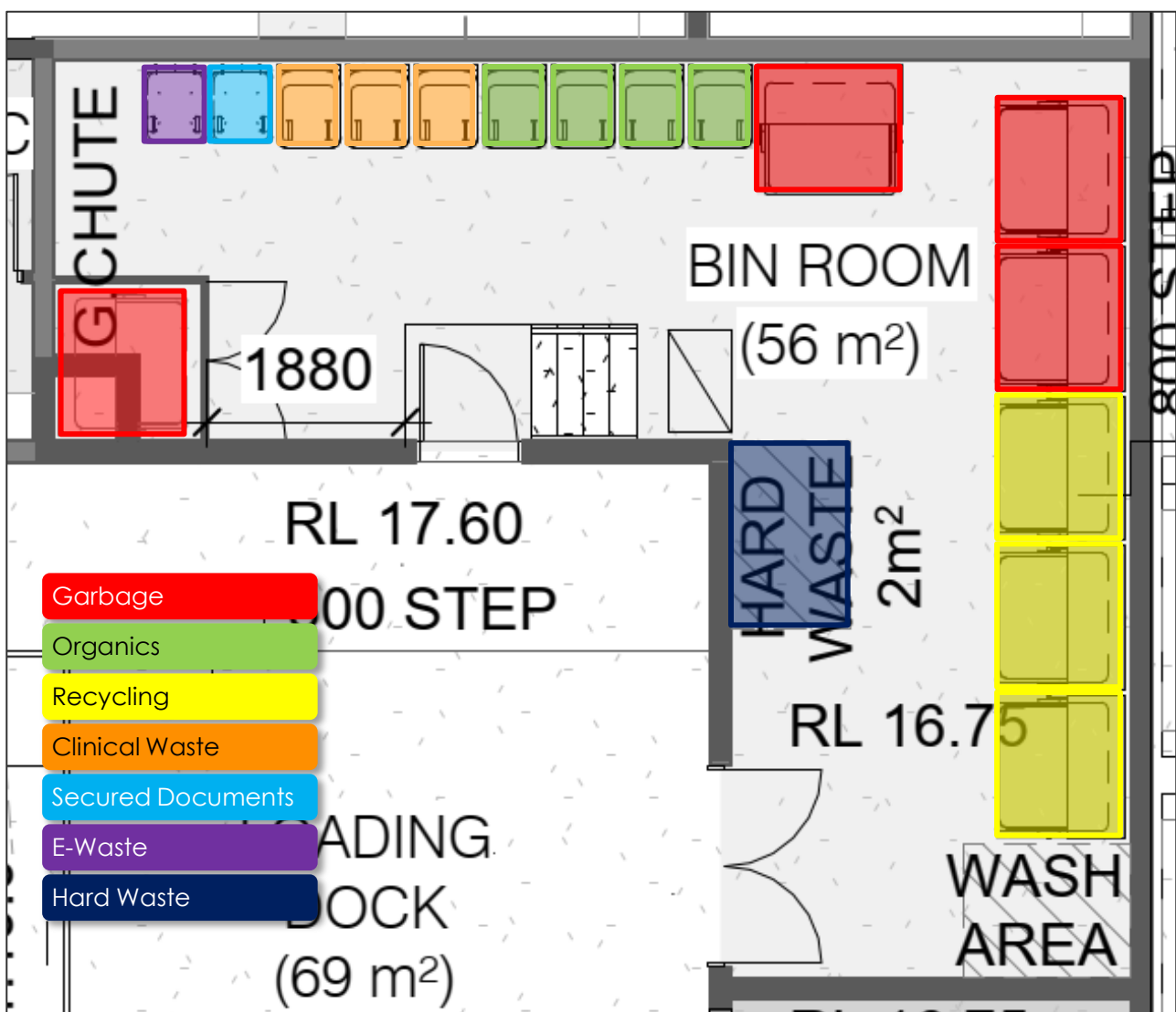
As indicated in Figure 3, it is proposed to provide a bin storage room on the basement level of the proposed residential aged care facility, with a total floor area of approximately 56 m<sup>2</sup>.

The layout of the bin storage area is shown in Figure 4, which demonstrates that the area is capable of accommodating the required bins, as calculated in Table 3.

Some additional area is also provided within the bin storage room to allow for the temporary storage of bulk items and packaging, under the control of the operator. Furthermore, the bin storage room is located appropriately for access by staff and is secured from the common areas.

The bin storage area should be vermin proof, and have appropriate ventilation, lighting and drainage, and shall be cleaned regularly by the operator or waste collection contractor, to minimise odour.

**Figure 4 Bin Storage Room Layout**



### 8.3 Waste Chute Rooms

Waste chute rooms are located at each level of the development. The waste room will include a garbage chute and a self-closing door to ensure that odours do not permeate into the hall.

The waste chute terminates in the south-west of the waste room, in an area which will be separated by mesh cage or similar to ensure the safety of bin room occupants.

The following general rules apply when using the waste chutes:

- General household rubbish (essentially kitchen & bathroom rubbish) is the ONLY waste that should be placed in the garbage chutes;
- All rubbish must be securely bagged & tied before placing down the garbage chute;
- NO glass, cardboard, open food containers, plastic or papers is to be placed down the garbage chute; **use the relevant bins in the waste room**; and
- No rubbish is to be left on floor in the waste chute room.

### 8.4 Bin Collection

On collection days, the private contractor will enter the site in a forward direction using a 6.4m length truck, and reverse into the loading bay. The bins will be collected directly from the bin storage room by the private contractor, and immediately returned following collection. The private contractor will then exit the site in a forward direction.

Swept paths have been prepared, and are provided within Appendix A demonstrating the above movements with appropriate clearances and no corrective manoeuvres required. As such, this arrangement is considered acceptable.

### 8.5 Bin Cleaning

The operator shall ensure that bins are kept in a clean state, to minimise odours and to discourage vermin. This may include regular cleaning by a third party, cleaning by the waste contractor, bin swapping by the waste contractor, or maintenance by staff or waste contractor.

If cleaning is to be undertaken on-site, it should only occur in a designated bin cleaning area, provided with a drain connected to sewer.

## 8.6 Signage

To avoid contamination between garbage streams, bin lids will be colour coded in accordance with the Australian Standard (AS4123), to ensure the bin type is easily distinguishable. Furthermore, bins should include typical signage (preferably on the bin lid) to reinforce the appropriate materials to be deposited in each bin. Example signage is shown in Figure 5 below.

**Figure 5 Example Waste Signage**



## 9 MANAGEMENT

---

### 9.1 General

In relation to the proposed development, recycling is of key importance, and in this regard, the operator shall encourage staff to participate in minimising and reducing solid waste production by:

- Promoting the waste hierarchy, which in order of preference seeks to:
  - + Avoid waste generation in the first place;
  - + Increase the reuse and recycling of waste when it is generated;
  - + Recover, treat or contain waste preferentially to; and
  - + Its disposal in Land Fill (which is least desirable).
- Providing information detailing recyclable materials to ensure that non-recyclable materials do not contaminate recycling collections;
- Providing information regarding safe chemical waste disposal methods and solutions, including correct battery and electronics disposal methods;
- Encouraging composting for staff ; and
- Providing tips for recycling and reusing waste, including encouraging the disposal of reusable items in good condition via donations to Opportunity Shops and Charities.

Additionally, it is recommended that a three bin system is provided within each lodging room (if appropriate), kitchen or food preparation area, providing separate bins for garbage, recycling, and organics.

### 9.2 Staff Information

To ensure all staff are aware of their responsibilities with regard to waste and bin management, an information package will be provided by the operator to all staff, including the following information:

- A copy of this Waste Management Plan;
- Methods and techniques for waste reduction and minimisation;
- Information regarding bin collection days and requirements;
- Staff responsibilities with regard to bin usage, storage, and collection; and
- Staff responsibilities with regard to litter and waste removal.

### 9.3 Noise Control

To minimise the disturbance to residents during waste collection, the collection should follow the criteria specified by the EPA, as below:

- Collections should be restricted to the hours 7:00am to 6:00pm, Monday to Saturday;
- Compaction should only be carried out while on the move;
- Bottles should not be broken up at the point of collection;
- Routes that service entirely residential areas should be altered regularly to reduce early morning disturbance; and
- Noisy verbal communication between operators should be avoided where possible.

## 10 OCCUPATIONAL HEALTH & SAFETY RESPONSIBILITIES

---

The operator shall ensure compliance to all relevant OH&S regulations and legislation, including the following:

- Worksafe Victoria Guidelines for Non-Hazardous Waste and Recyclable Materials.

## 11 CONTACT INFORMATION

---

### 11.1 Council

Bayside City Council

Phone: (03) 9599 4444 (Customer Service)

Web: [www.bayside.vic.gov.au](http://www.bayside.vic.gov.au)

### 11.2 Contractors

Circular Systems

Services: Waste collection and management

Web: <https://www.circular-systems.com.au/>

Email: [hello@circular-systems.com.au](mailto:hello@circular-systems.com.au)

ASI JD MacDonald

Services: Waste collection and management equipment

Phone: 1800 023 441

Web: [www.jdmacdonald.com.au](http://www.jdmacdonald.com.au)

Email: [enquiry@asidmacdonald.com.au](mailto:enquiry@asidmacdonald.com.au)

CSC Waste & recycling

Services: Private contractor

Phone: 1300 499 927

Web: [www.cscwaste.com.au](http://www.cscwaste.com.au)

Email: [info@cscwaste.com.au](mailto:info@cscwaste.com.au)

Urban Waste

Services: Private contractor

Phone: 0429 309 269

Web: [www.urbanwaste.com.au](http://www.urbanwaste.com.au)

Email: [info@urbanwaste.com.au](mailto:info@urbanwaste.com.au)

## iDump

Services: Private contractor  
Phone: 1300 443 867  
Web: [www.iDump.com.au](http://www.iDump.com.au)  
Email: [info@idump.com.au](mailto:info@idump.com.au)

## JJ Richards & Sons

Services: Private contractor including bin tugs  
Phone: (03) 9703 5222  
Web: [www.jjrichards.com.au](http://www.jjrichards.com.au)  
Email: [operations.melbourne@jjrichards.com.au](mailto:operations.melbourne@jjrichards.com.au)

## WasteWise

Services: Private contractor  
Phone: 1300 550 408  
Web: [www.wastewise.com.au](http://www.wastewise.com.au)

## Cleanaway Clinical Waste (clinical waste contractor)

Services: Private contractor  
Phone: 131 339  
Web: <https://www.cleanaway.com.au/waste/clinical-waste/>

## Cleanaway Daniels (clinical waste contractor)

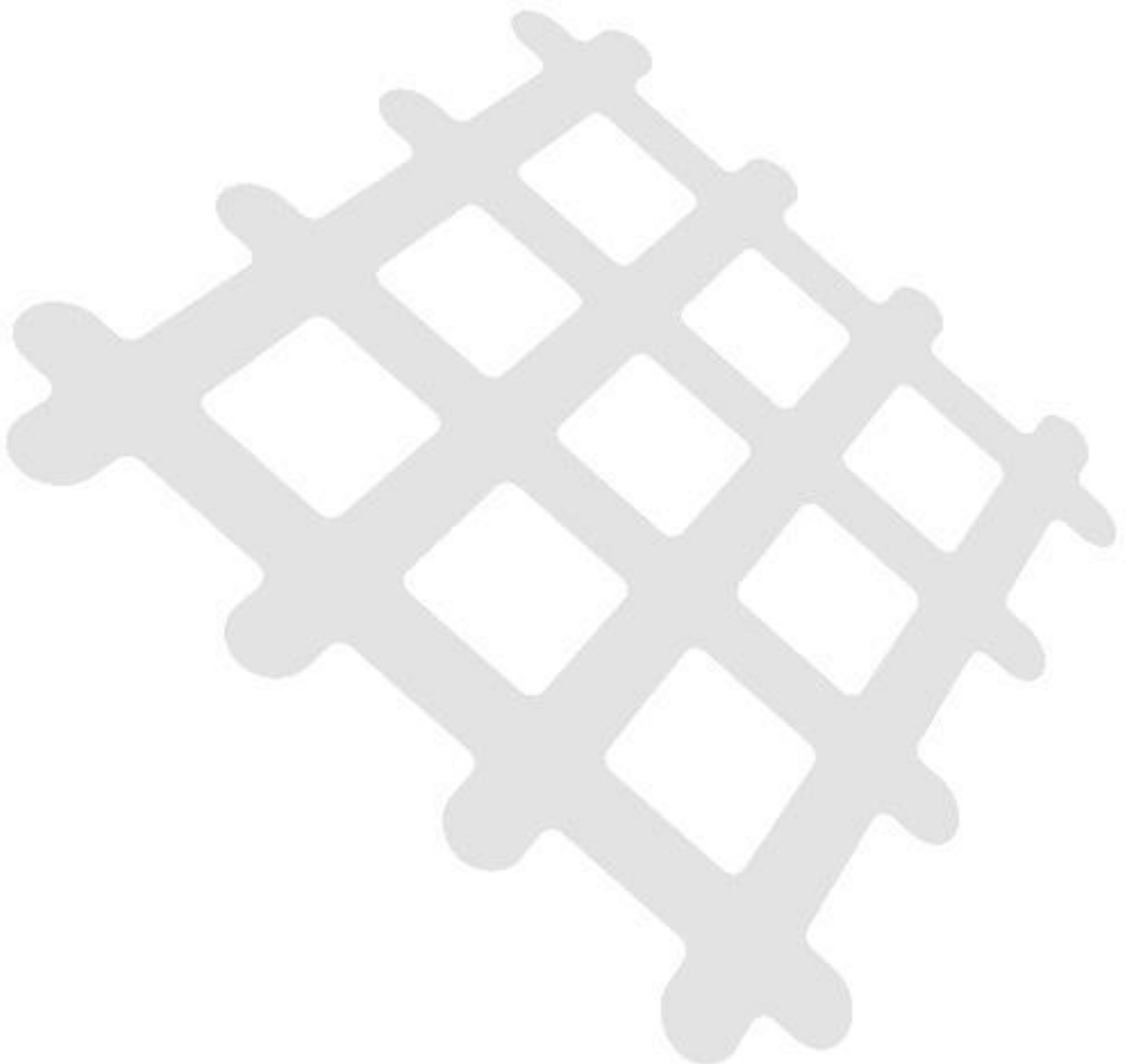
Services: Private contractor  
Phone: 1300 66 77 87  
Web: [www.danielshealth.com.au/](http://www.danielshealth.com.au/)

## 11.3 Others

### Sustainability Victoria

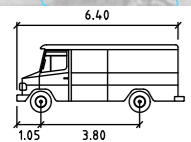
Services: Sustainable Waste Management initiatives and information  
Phone: 1300 363 744 (Energy, Waste and Recycling)  
Web: [www.sustainability.vic.gov.au](http://www.sustainability.vic.gov.au)  
Email: [info@sustainability.vic.gov.au](mailto:info@sustainability.vic.gov.au)

# ***Appendix A Swept Path Diagram***



CAD File: N:\Project\2025\250040\Drawings\250040SPA103.dgn

Date Plotted: 11-11-2025 8:34:36 AM



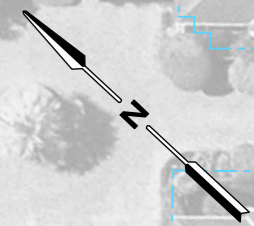
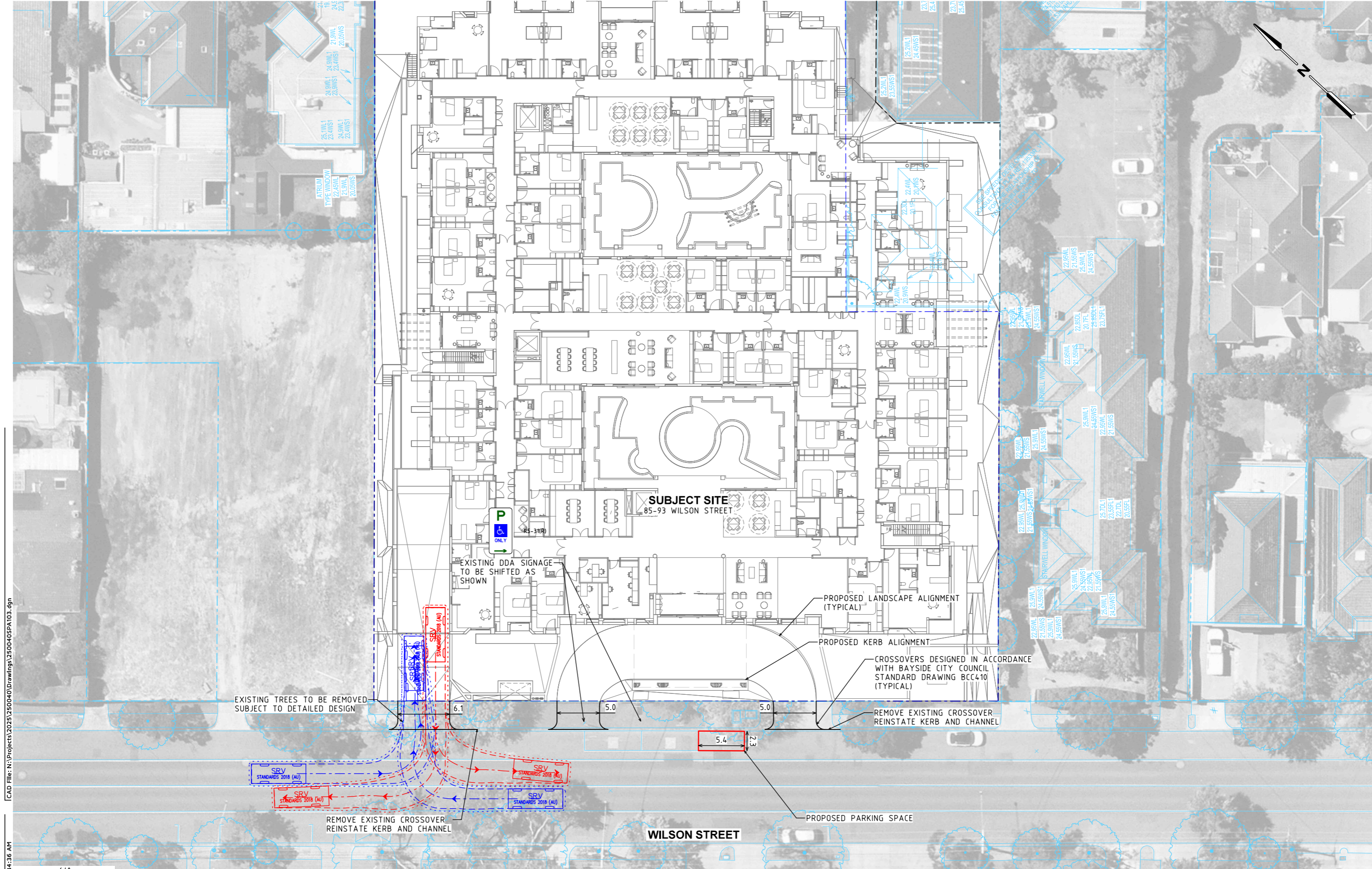
SRV  
 Width : 2.30 meters  
 Track : 2.30  
 Lock to Lock Time : 6.0  
 Steering Angle : 38.1

**SWEPT PATH LEGEND**

--- DESIGN VEHICLE SWEPT PATHS SHOWN DASHED  
 - - - - - 300mm CLEARANCE ENVELOPE SHOWN DOTTED

onemilegrid operates from Wurundjeri Woiwurrup Country of the Kulin nation. We acknowledge and extend our appreciation to the Wurundjeri People, the Traditional Owners of the land. We pay our respects to leaders and elders past, present and emerging for they hold the memories, the traditions, the culture, and the hopes of all Wurundjeri Peoples.

Aerial Photography  
 Aerial photography provided by Nearmap

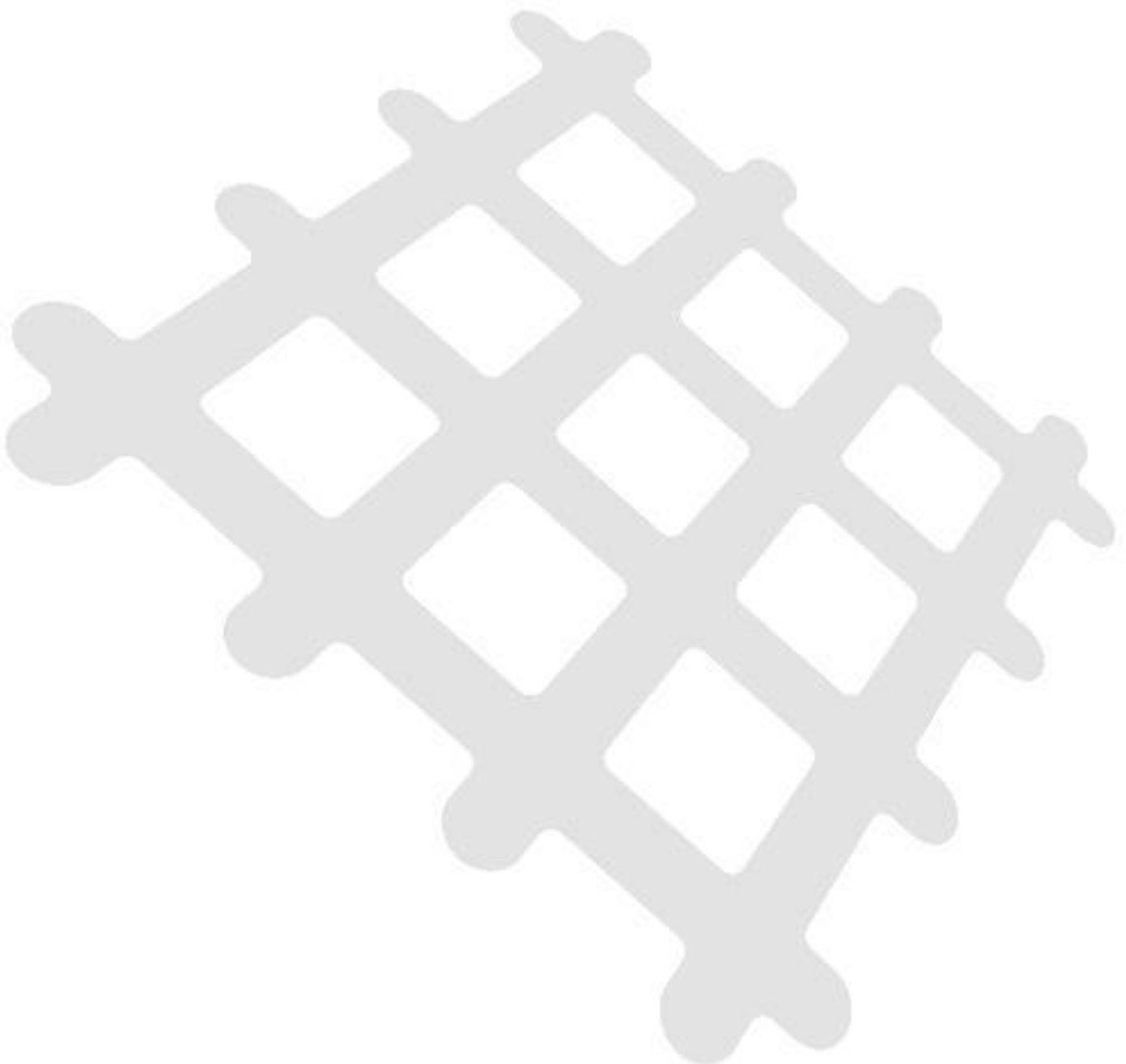


Wurundjeri Woiwurrup Country  
 56 Down Street, Collingwood, VIC 3066  
 Email: info@onemilegrid.com.au Web: www.onemilegrid.com.au  
 Phone (03) 9939 8250

Scale  
 1:400 @ A3

Drawing Title 85-93 WILSON STREET, BRIGHTON VEHICLE SITE ACCESS AND CIRCULATION - GROUND LEVEL SWEPT PATH ANALYSIS		
Designed DA	Approved JD	Melway Ref 67 G11
Project Number 250040	Drawing Number SPA103	Revision C

# ***Appendix B    Bin Storage Area Scaled Plans***



Builders / Contractors shall verify all dimensions before any work commences. Dimensions shown are nominal. Figured dimensions shall take precedence over scaled dimensions. Any discrepancies are to be made known to the Architects / Designers studio prior to any works commencing on site. All shop drawings shall be submitted for review and manufacture shall not commence prior to the return of stamped shop drawings. Drawings issued subject to the approval of the relevant building surveyor.

STUDIO MCCUE PTY LTD retains copyright and moral rights to this drawing and ideas therein. It cannot be reproduced or copied in any form or by any means without the written permission of STUDIO MCCUE PTY LTD.

**NOTES**

- TITLE BOUNDARY
- - - LINE OF BASEMENT
- - - LINE OF TPZ
- - - LINE OF SRZ

HW HABITABLE WINDOW  
NHW NON-HABITABLE WINDOW

**NOTE:**

1. FFL, RL AND NGL LEVELS SHOWN ARE IN METER TO AHD.
2. DOUBLE-GLAZING OR BETTER TO BE APPLIED TO ALL WINDOWS AND GLAZED DOORS.
3. TO BE READ IN CONJUNCTION WITH LANDSCAPE DRAWINGS.
4. LANDSCAPE IRRIGATION IS TO BE CONNECTED TO THE RAINWATER TANK ONLY.
5. TO BE READ IN CONJUNCTION WITH THE LATEST LAND SURVEYORS DRAWING.



C	07/11/2025	FOR TOWN PLANNING
B	13/10/2025	FOR TOWN PLANNING SUBMISSION

Rev	Date	Issue



# MCCUE

40265 Dover Street  
Cremorne VIC  
3121 Australia  
03 7000 4899 info@studiomccue.com  
studio@mccue.com

ABN 78 679 570 794  
ARSV 600583  
BCAO 6254  
NSWARS 9989

Project  
**ARCARE BRIGHTON**  
85-93 WILSON ST, BRIGHTON, 3186

Title  
**BASEMENT FLOOR PLAN**

Dwg No	TP-101	Project No	24021
Rev	C	Drawn By	PD
Scale @ A1	As indicated	Checked By	CM