

project GREEN



Tree Report

22 April 2026

S49082

Prepared for:

Morton & Co

Site Details:

Trinity College

119-243 Hart Street
Colac Victoria

Prepared by:

Project Green Pty Ltd

25-27 Ceafield Road
Para Hills West SA 5096

ABN: 78 088 402 706

ACN: 088 402 706

Tel: (08) 8283 1300

Fax: (08) 8258 1933

admin@projectgreen.net.au

This copied document to be made available for the sole purpose of enabling its consideration and review as part of a planning process under the Planning and Environment Act 1987. The document must not be used for any purpose which may breach any copyright

**ADVERTISED
PLAN**

Contents

1	INTRODUCTION.....	3
2	BACKGROUND INFORMATION.....	3
2.1	Relevant legislation	3
2.2	Documents and information provided.....	3
3	METHOD	4
3.1	Limitations.....	4
4	SITE DESCRIPTION.....	5
5	MAPPING	6
6	TREE DETAILS	8
7	DISCUSSION	10
7.1	Tree species.....	10
7.2	Legal status.....	10
7.3	Tree health	10
7.4	Tree structure.....	10
7.5	Useful Life Expectancy.....	10
7.6	Significance in the landscape	10
7.7	Tree retention and removal	11
8	TREE PROTECTION ZONES.....	12
9	PROPOSED DEVELOPMENT.....	14
10	ASSESSMENT.....	16
11	GLOSSARY	18
12	BIBLIOGRAPHY	19
	APPENDIX – TREE DATA SHEETS	19

ADVERTISED PLAN

1 INTRODUCTION

Project Green was engaged to undertake a tree survey at Trinity College 119-243 Hart Street Colac. Project Green was requested to provide details of tree species, legislative status, tree condition, tree protection zones, and to provide advice on tree retention and removal. A total of **48 trees** were assessed.

Background

Trinity College has submitted plans for a new Science and Learning Centre building and associated landscaping works. Demolition works include removal of all existing trees located on the proposed building and landscaping footprint. The Department of Transport and Planning has requested the following additional information in relation to the trees.

The report of a qualified arborist incorporating:

- a) An assessment of the significance of canopy trees proposed to be removed*
- b) An assessment of the adequacy of the proposed setbacks of buildings and works from canopy trees to be retained.*
- c) Identification of appropriate construction techniques to facilitate the retention of such vegetation, such as pier and beam footings;*
- d) Recommendation of measures during demolition and construction works to minimise damage to and ensure the retention of such vegetation, including the need for any remedial work such as pruning.*
- e) If any exemptions are proposed to be relied on in relation to Clause 52.16 and/or 52.17 evidence to demonstrate the applicability of these exemptions is required.*

2 BACKGROUND INFORMATION

2.1 Relevant legislation

On 15 September 2025, Amendment VC289 introduced clause 52.37 (Canopy trees) to all planning schemes. The clause requires a planning permit to remove, destroy or lop a canopy tree in specific circumstances. The requirement applies to all residential zones (except for the Low Density Residential Zone). Clause 52.37 requires a permit to remove, destroy or lop a canopy tree. A canopy tree means a tree that has:

- a height of more than 5 metres above ground level; and
- a trunk circumference of more than 0.5 metres, measured at 1.4 metres above ground level; and
- a canopy diameter of at least 4 metres.

2.2 Documents and information provided

The following documents and information were referred to in preparation of this report:

- *Architects drawings* by Morton and Co. dated 23/03/26
- *RFI from Dept of Transport and Planning* dated 02/03/2026.
- *Feature survey* by Macrae and Co dated 17/11/25.

ADVERTISED PLAN

3 METHOD

The following methods were used to assess the trees on site:

- Unique ID - Individual trees are given a unique Project Green identification number.
- GEO Location - The GPS location (longitude/latitude) of all trees was captured utilising a GPS corrected locational signal.
- Identification - trees were identified by genus and species
- Legislative Status – a trunk circumference measurement was taken at 1 metre above natural ground level. A tape measure was used to take measurements.
- Structural root zone (SPZ) – A measurement of the base of each tree was undertaken to calculate the SRZ of the tree.
- Tree protection zone (TPZ)– A measurement at 1.4m from natural ground level of each tree was undertaken to calculate the TPZ of the tree.
- Tree health – each tree was assessed for its biological attributes such as health and vigour with these being assessed and ranked in accordance with recognised industry standards.
- Tree Structure -each was assessed based on assessing live crown ratio and other crown physiology including limb attachment, taper, evidence of past limb failure, wound occlusion, evidence of any pest and or insect occurrence and general overall structure for the species being assessed.
- ULE – for each tree is derived by assessing all factors of the tree that affect life expectancy and each tree is given an expected life range.
- Retention value – retention value for each tree is using the IACA STARS rating system. The stem rates significance of a tree in the landscape and then determines retention value.
- Photo - photographic records were taken of each tree.

3.1 Limitations

- This report relates to the subject trees only. Any other trees on or adjacent to the site were not included in the assessment.
- The trees were inspected visually from the ground only. No aerial, subsurface or invasive inspections were performed and no soil or plant samples were laboratory tested.
- Due to plant hybridisation some species can be difficult to accurately identify.
- Information contained in this report is based on observations taken on the day of inspection only. It is possible that changes in environmental conditions or subsequent information may affect these findings.
- This report has been prepared on behalf of and for the exclusive use of the Project Green client.
- This report comprises an arboricultural assessment only and does not constitute legal advice. Separate legal advice should be sought as required.

4 SITE DESCRIPTION

The site is part of the Trinity College campus, comprising an open area scattered trees and with frontages to Pound Road and Hart Street. Portable classrooms are located to the west of the subject trees (Refer Figure 1).



Figure 1: Aerial view showing subject site

**ADVERTISED
PLAN**

5 MAPPING

Tree locations are shown on the aerial image and survey drawing below. The following Google Maps link is also provided.

https://www.google.com/maps/d/edit?mid=1g_Nv7r-y-ROkeKz2fyY5auMaill4mFs&usp=sharing

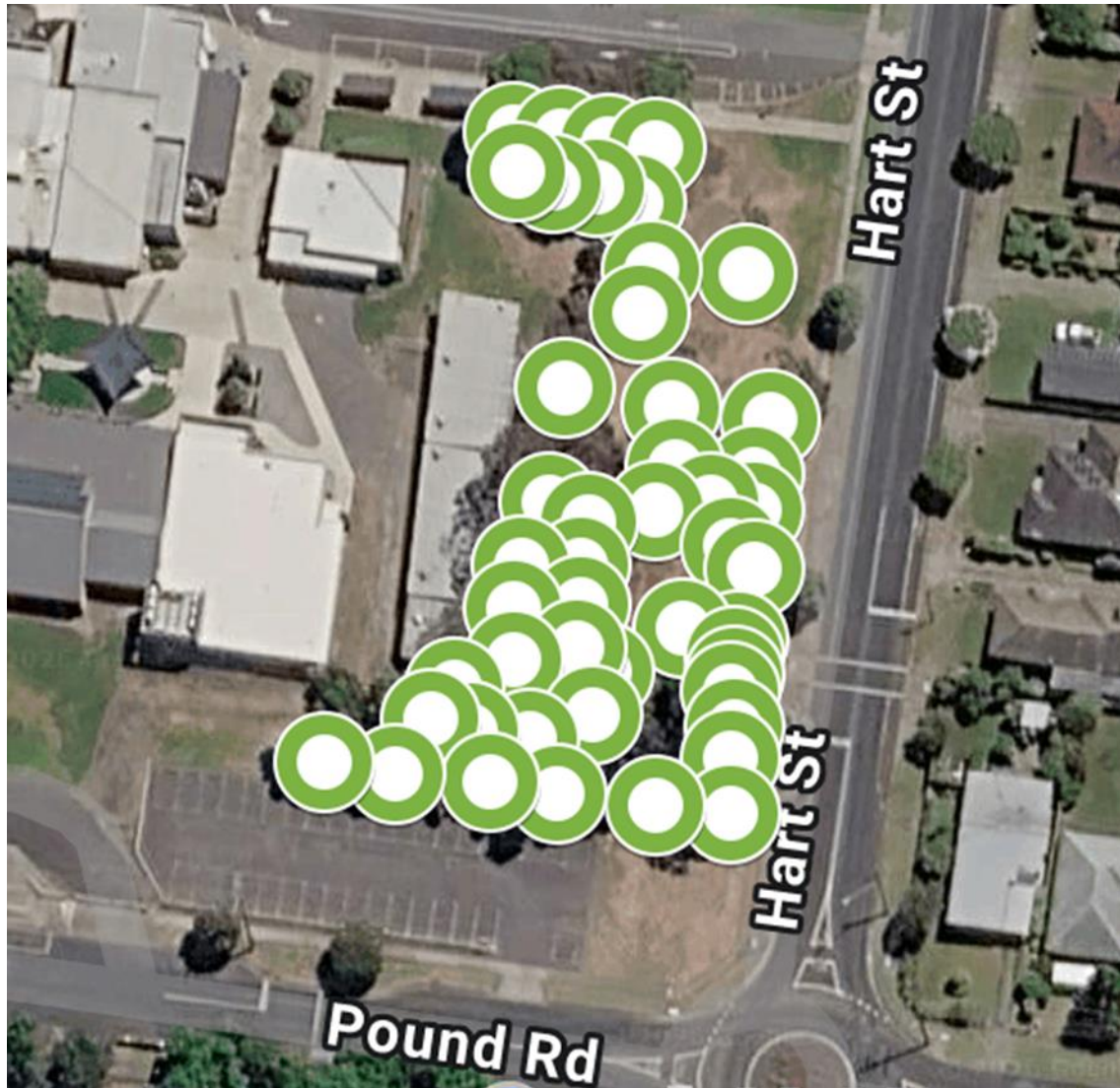


Figure 2: Aerial view showing subject trees (Google Maps)

**ADVERTISED
PLAN**

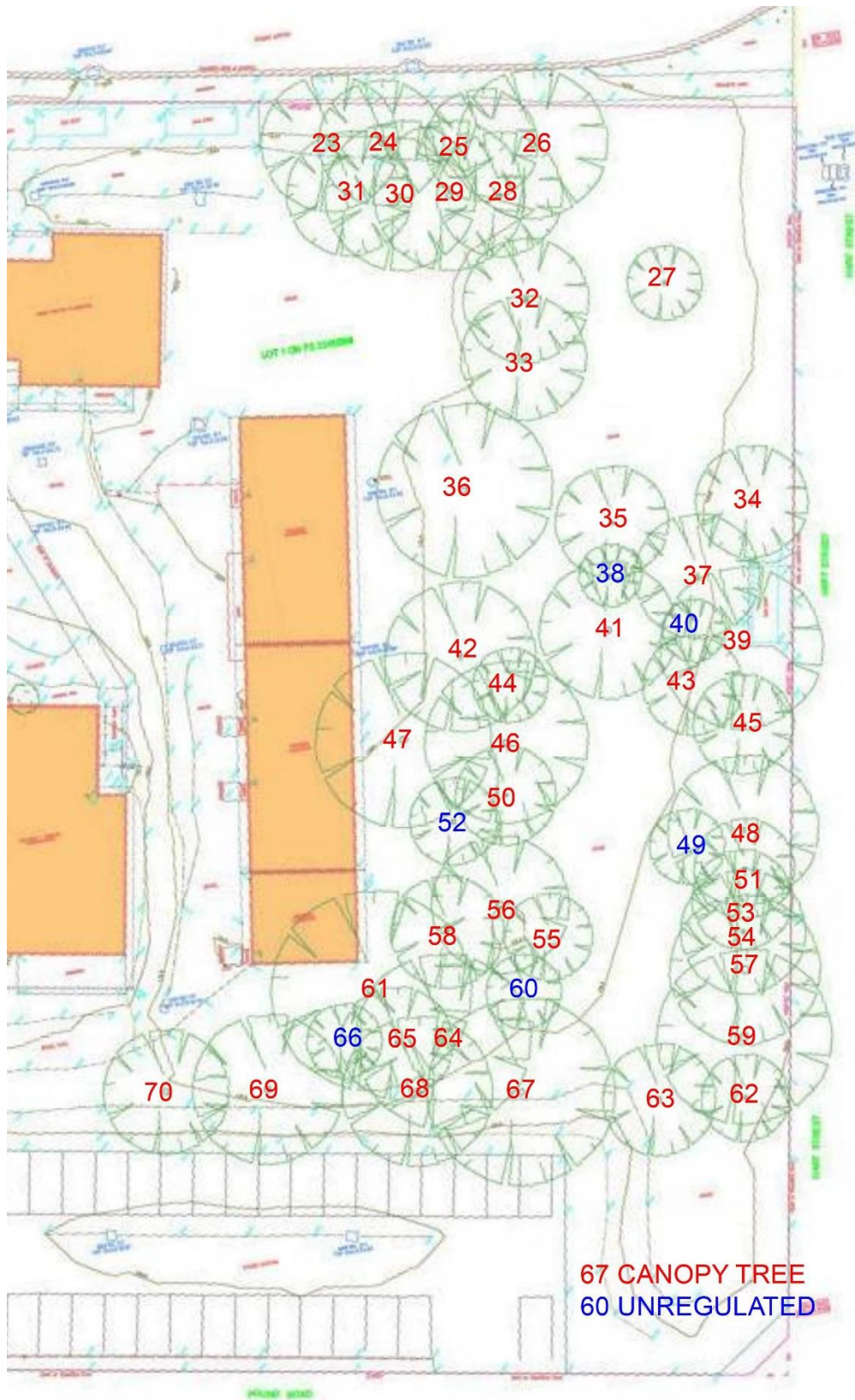


Figure 3: Survey drawing showing tree ID numbers

6 TREE DETAILS

A total of **48** trees were assessed. Details of each tree are provided in **Table 1** below, and in the tree data sheets at the end of this report.

Table 1: Tree details

Tree #	Species	legal status	Health	Structure	ULE (years)	Significance in landscape	Retention value
23	<i>Corymbia maculata</i>	Canopy Tree	Fair	Poor	Short <1-15	Low Hazardous / Irreversible Decline	Priority for Removal
24	<i>Eucalyptus sideroxylon</i>	Canopy Tree	Good	Poor	Short <1-15	Low Hazardous / Irreversible Decline	Priority for Removal
25	<i>Eucalyptus sideroxylon</i>	Canopy Tree	Good	Good	Short <1-15	Low	Low
26	<i>Eucalyptus leucoxylon ssp. leucoxylon</i>	Canopy Tree	Good	Fair	Short <1-15	Low	Low
27	<i>Eucalyptus sp.</i>	Canopy Tree	Fair	Poor	Short <1-15	Low	Low
28	<i>Eucalyptus sideroxylon</i>	Canopy Tree	Fair	Fair	Short <1-15	Low	Low
29	<i>Corymbia maculata</i>	Canopy Tree	Good	Fair	Short <1-15	Low	Low
30	<i>Eucalyptus sideroxylon</i>	Canopy Tree	Good	Fair	Short <1-15	Low	Low
31	<i>Eucalyptus leucoxylon ssp. leucoxylon</i>	Canopy Tree	Good	Fair	Short <1-15	Low	Low
32	<i>Eucalyptus sp.</i>	Canopy Tree	Good	Fair	Short <1-15	Low	Low
33	<i>Eucalyptus sp.</i>	Canopy Tree	Good	Good	Medium 15-40	Low	Medium
34	<i>Eucalyptus leucoxylon ssp. leucoxylon</i>	Canopy Tree	Good	Fair	Short <1-15	Low	Low
35	<i>Eucalyptus caesia ssp. Magna</i>	Canopy Tree	Good	Fair	Short <1-15	Low	Low
36	<i>Eucalyptus sideroxylon</i>	Canopy Tree	Good	Good	Medium 15-40	Low	Medium
37	<i>Eucalyptus leucoxylon ssp. leucoxylon</i>	Canopy Tree	Good	Good	Short <1-15	Low	Low
38	<i>Eucalyptus camaldulensis</i>	Unregulated	Poor	Poor	Short <1-15	Low Hazardous / Irreversible Decline	Priority for Removal
39	<i>Eucalyptus leucoxylon ssp. leucoxylon</i>	Canopy Tree	Good	Poor	Short <1-15	Low Hazardous / Irreversible Decline	Priority for Removal
40	<i>Corymbia ficifolia</i>	Unregulated	Fair	Fair	Short <1-15	Low Hazardous / Irreversible Decline	Priority for Removal
41	<i>Eucalyptus globulus</i>	Canopy Tree	Good	Good	Medium 15-40	Low Hazardous / Irreversible Decline	Medium
42	<i>Eucalyptus sideroxylon</i>	Canopy Tree	Good	Good	Medium 15-40	Low	Medium
43	<i>Eucalyptus leucoxylon ssp. leucoxylon</i>	Canopy Tree	Good	Good	Short <1-15	Low	Low
44	<i>Eucalyptus sp.</i>	Canopy Tree	Fair	Fair	Short <1-15	Low	Low
45	<i>Corymbia ficifolia</i>	Canopy Tree	Good	Good	Medium 15-40	Low	Medium

46	<i>Eucalyptus sideroxylon</i>	Canopy Tree	Good	Fair	Medium 15-40	Low	Medium
47	<i>Eucalyptus sideroxylon</i>	Canopy Tree	Good	Good	Medium 15-40	Low	Medium
48	<i>Eucalyptus grandis</i>	Canopy Tree	Good	Good	Medium 15-40	Low	Medium
49	<i>Corymbia ficifolia</i> (Red-	Unregulated	Fair	Fair	Short <1- 15	Low	Low
50	<i>Eucalyptus camaldulensis</i>	Canopy Tree	Good	Fair	Short <1- 15	Low	Low
51	<i>Corymbia ficifolia</i>	Canopy Tree	Good	Fair	Short <1- 15	Low	Low
52	<i>Eucalyptus sideroxylon</i>	Unregulated	Good	Poor	Short <1- 15	Low Hazardous / Irreversible Decline	Priority for Removal
53	<i>Eucalyptus leucoxylon ssp. leucoxylon</i>	Canopy Tree	Poor	Poor	Short <1- 15	Low Hazardous / Irreversible Decline	Priority for Removal
54	<i>Corymbia ficifolia</i>	Canopy Tree	Good	Fair	Short <1- 15	Low	Low
55	<i>Agonis flexuosa</i>	Canopy Tree	Fair	Fair	Short <1- 15	Low Hazardous / Irreversible Decline	Low
56	<i>Eucalyptus sideroxylon</i>	Canopy Tree	Good	Fair	Short <1- 15	Significance: 3. Low Significance in Landscape	Low
57	<i>Eucalyptus sideroxylon</i>	Canopy Tree	Good	Fair	Short <1- 15	Low	Low
58	<i>Eucalyptus camaldulensis</i>	Canopy Tree	Good	Fair	Short <1- 15	Low	Low
59	<i>Eucalyptus grandis</i>	Canopy Tree	Good	Good	Medium 15-40	Low	Medium
60	<i>Melaleuca styphelioides</i>	Unregulated	Fair	Fair	Short <1- 15	Low Environmental Pest / Noxious Weed Species	Priority for Removal
61	<i>Eucalyptus camaldulensis</i>	Canopy Tree	Good	Fair	Medium 15-40	Low	Medium
62	<i>Eucalyptus grandis</i>	Canopy Tree	Good	Good	Medium 15-40	Low Environmental Pest / Noxious Weed Species	Low
63	<i>Eucalyptus camaldulensis</i>	Canopy Tree	Good	Good	Medium 15-40	Low Environmental Pest / Noxious Weed Species	Low
64	<i>Eucalyptus camaldulensis</i>	Canopy Tree	Good	Fair	Short <1- 15	Low	Low
65	<i>Eucalyptus leucoxylon ssp. leucoxylon</i>	Canopy Tree	Good	Fair	Short <1- 15	Low	Low
66	<i>Eucalyptus camaldulensis</i>	Unregulated	Fair	Fair	Short <1- 15	Low	Low
67	<i>Eucalyptus leucoxylon ssp. Leucoxylon</i>	Canopy Tree	Good	Good	Medium 15-40	Low	Medium
68	<i>Eucalyptus leucoxylon ssp. Leucoxylon</i>	Canopy Tree	Good	Good	Medium 15-40	Low	Medium
69	<i>Eucalyptus leucoxylon ssp. Leucoxylon</i>	Canopy Tree	Good	Poor	Short <1- 15	Low Hazardous / Irreversible Decline	Priority for Removal
70	<i>Eucalyptus leucoxylon ssp. Leucoxylon</i>	Canopy Tree	Good	Poor	Short <1- 15	Low Hazardous / Irreversible Decline	Priority for Removal

7 DISCUSSION

7.1 Tree species

The trees comprise a mix of mainly native Eucalypt species commonly planted in rural townships.

7.2 Legal status

Legal status of the trees is as follows. Development approval is required in relation to any canopy trees.

- Canopy trees-42
- Unregulated-6

7.3 Tree health

The trees are native species well adapted to local conditions and mainly exhibit good health. Two trees exhibits poor health. A breakdown of tree health is as follows.

- Good -37
- Fair- 9
- Poor -2

7.4 Tree structure

The majority of trees on site have fair (average) general structure. Nine trees exhibit poor structure. A breakdown of tree structure is as follows.

- Good -15
- Fair- 24
- Poor -9

**ADVERTISED
PLAN**

7.5 Useful Life Expectancy

Most trees have a relatively short life expectancy. ULE is as follows.

- Short (1-15years) -34
- Medium (15-40 years)-14
- Long (40+) -0

7.6 Significance in the landscape

Most trees were assessed as having a low significance in the local landscape. Landscape significance is as follows.

- Low -34
- Low (Hazardous, Irreversible Decline) -11
- Low (Environmental Pest, Noxious Weed Species) -3
- Medium-0
- High -0

7.7 Tree retention and removal

No trees were rated as Priority for Retention (High) - Such trees, if present, are considered important for retention and should be retained and protected. Design modification or re-location of buildings should be considered to accommodate the setbacks as prescribed by the Australian Standard AS 4970 Protection of trees on development sites.

Twelve trees were rated as Consider for Retention (Medium) - Such trees may be retained and protected. These are considered less critical; however, their retention should remain priority with removal considered only if adversely affecting the proposed building/works and all other alternatives have been considered and exhausted.

Twenty five trees were rated as Consider for Removal (Low) - These trees are not considered important for retention, nor require special works or design modification to be implemented for their retention.

Eleven trees were rated as Priority for Removal - These trees are considered hazardous, or in irreversible decline, or weeds and should be removed irrespective of development.

**ADVERTISED
PLAN**

8 TREE PROTECTION ZONES

All parts of a tree, including its root system, trunk and crown, may be damaged by development and construction activities if tree protection measures are not implemented. Damage to any one part of the tree may affect its functioning as a whole.

Under AS4970-2025 establishing and maintaining a **Tree Protection Zone (TPZ)** is the most important part of protecting trees during the onsite stages of work. The TPZ is the zone determined by the project arborist using the process set out in AS4970. It is a specified zone above and below ground set aside to protect a tree's roots and crown where these might be damaged by development.

The **Notional Root Zone (NRZ)** is the starting point for determining the TPZ. It is a zone enclosed by a radius of 12 times DSH that is a primary trigger for arboricultural input on a development site. DSH is trunk diameter at 1.4 m above ground level.

The **Structural Root Zone (SRZ)** is the theoretical area around the base of a tree required for the tree's stability in the ground. It comprises the woody root growth and soil cohesion in the SRZ are necessary to hold the tree upright. The SRZ considers a tree's structural stability only, not the root zone required for a tree's health and long-term viability, which is typically a much larger area. **Table 2** illustrates the NRZ and SRZ for the trees.

Table 2: Tree data

Tree #	Species	Circ. @ 1m (m)	legal status	NRZ radius (m)	SRZ radius (m)
23	<i>Corymbia maculata</i>	2.04	Canopy Tree	6.45	2.7
24	<i>Eucalyptus sideroxylon</i>	1.70	Canopy Tree	5.52	2.7
25	<i>Eucalyptus sideroxylon</i>	0.90	Canopy Tree	3.48	2.3
26	<i>Eucalyptus leucoxylon ssp. leucoxylon</i>	1.46	Canopy Tree	5.52	2.8
27	<i>Eucalyptus sp.</i>	1.06	Canopy Tree	4.08	2.4
28	<i>Eucalyptus sideroxylon</i>	0.95	Canopy Tree	3.60	2.1
29	<i>Corymbia maculata</i>	1.55	Canopy Tree	5.88	2.5
30	<i>Eucalyptus sideroxylon</i>	1.30	Canopy Tree	4.80	2.3
31	<i>Eucalyptus leucoxylon ssp. leucoxylon</i>	1.18	Canopy Tree	4.44	2.3
32	<i>Eucalyptus sp.</i>	1.72	Canopy Tree	4.41	2.5
33	<i>Eucalyptus sp.</i>	1.31	Canopy Tree	5.76	2.6
34	<i>Eucalyptus leucoxylon ssp. leucoxylon</i>	1.02	Canopy Tree	4.32	3.0
35	<i>Eucalyptus caesia ssp. Magna</i>	1.11	Canopy Tree	4.08	2.2
36	<i>Eucalyptus sideroxylon</i>	1.70	Canopy Tree	6.48	2.7
37	<i>Eucalyptus leucoxylon ssp. leucoxylon</i>	0.84	Canopy Tree	3.00	1.9
38	<i>Eucalyptus camaldulensis</i>	0.81	Unregulated	2.00	2.1
39	<i>Eucalyptus leucoxylon ssp. leucoxylon</i>	0.90	Canopy Tree	3.48	2.1
40	<i>Corymbia ficifolia</i>	0.92	Unregulated	2.53	1.9
41	<i>Eucalyptus globulus</i>	1.20	Canopy Tree	4.44	2.3
42	<i>Eucalyptus sideroxylon</i>	1.61	Canopy Tree	6.00	2.6
43	<i>Eucalyptus leucoxylon ssp. leucoxylon</i>	0.76	Canopy Tree	3.12	2.0
44	<i>Eucalyptus sp.</i>	0.85	Canopy Tree	2.96	1.9
45	<i>Corymbia ficifolia</i>	1.25	Canopy Tree	4.56	2.3

46	<i>Eucalyptus sideroxylon</i>	1.90	Canopy Tree	6.63	2.8
47	<i>Eucalyptus sideroxylon</i>	1.92	Canopy Tree	7.32	2.8
48	<i>Eucalyptus grandis</i>	1.21	Canopy Tree	4.56	2.3
49	<i>Corymbia ficifolia</i> (Red-	0.92	Unregulated	2.64	2.0
50	<i>Eucalyptus camaldulensis</i>	1.03	Canopy Tree	3.60	2.1
51	<i>Corymbia ficifolia</i>	0.95	Canopy Tree	3.36	2.0
52	<i>Eucalyptus sideroxylon</i>	2.00	Unregulated	5.35	2.6
53	<i>Eucalyptus leucoxylon ssp. leucoxylon</i>	0.57	Canopy Tree	2.16	1.8
54	<i>Corymbia ficifolia</i>	1.25	Canopy Tree	4.56	2.3
55	<i>Agonis flexuosa</i>	0.86	Canopy Tree	2.40	1.7
56	<i>Eucalyptus sideroxylon</i>	2.36	Canopy Tree	5.77	2.8
57	<i>Eucalyptus sideroxylon</i>	2.03	Canopy Tree	7.08	3.2
58	<i>Eucalyptus camaldulensis</i>	1.62	Canopy Tree	3.55	2.5
59	<i>Eucalyptus grandis</i>	1.80	Canopy Tree	6.60	2.7
60	<i>Melaleuca styphelioides</i>	0.89	Unregulated	2.55	1.8
61	<i>Eucalyptus camaldulensis</i>	1.75	Canopy Tree	6.48	2.7
62	<i>Eucalyptus grandis</i>	1.14	Canopy Tree	4.08	2.2
63	<i>Eucalyptus camaldulensis</i>	1.25	Canopy Tree	4.68	2.3
64	<i>Eucalyptus camaldulensis</i>	1.90	Canopy Tree	6.84	2.8
65	<i>Eucalyptus leucoxylon ssp. leucoxylon</i>	1.15	Canopy Tree	3.73	2.3
66	<i>Eucalyptus camaldulensis</i>	0.53	Unregulated	2.00	1.6
67	<i>Eucalyptus leucoxylon ssp. Leucoxylon</i>	1.76	Canopy Tree	6.36	2.6
68	<i>Eucalyptus leucoxylon ssp. Leucoxylon</i>	1.23	Canopy Tree	4.44	2.3
69	<i>Eucalyptus leucoxylon ssp. Leucoxylon</i>	2.00	Canopy Tree	7.08	2.8
70	<i>Eucalyptus leucoxylon ssp. Leucoxylon</i>	2.30	Canopy Tree	8.28	3.0

AS4970-2025 allows for a level of encroachment into the NRZ. Encroachments can be by earthworks, paving and trenching for services, as well as building works.

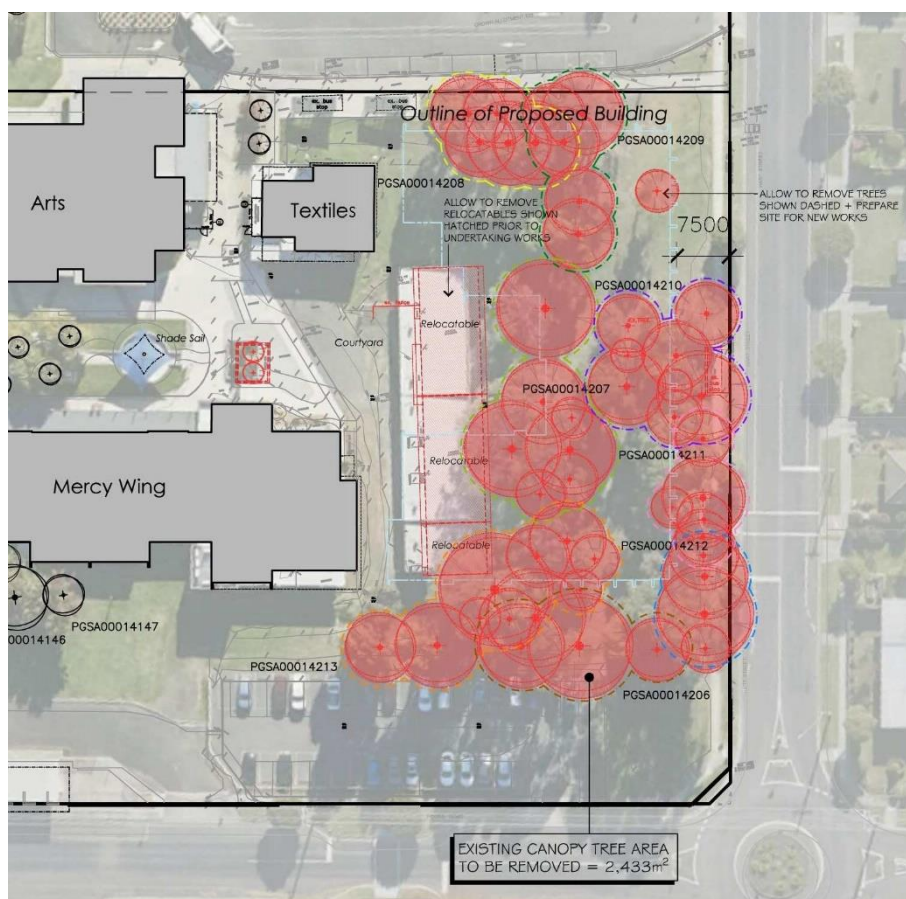
- The proposed encroachment is considered **minor** if it is less than 10 % of the area of the NRZ, has not had recent NRZ encroachments and is outside of the SRZ. Generally, it is unlikely that there will be a significant impact to tree health, longevity or structure. Tree protection should be implemented during site works.
- The proposed encroachment is considered **moderate** if it is greater than 10% and less than 20% of the area of the NRZ and is outside of the SRZ. The project arborist shall review the proposed impact and undertake any other necessary investigations to address the factors listed in Clause 3.3.2 to demonstrate how the tree will remain viable.
- The proposed encroachment is considered **major** if it is greater than 20% of the area of the NRZ or inside the SRZ. The project arborist shall explore alternative designs with the design team and/or demonstrate that the tree will remain viable. Relevant factors listed in Clause 3.3.2 should also be considered.

ADVERTISED PLAN

9 PROPOSED DEVELOPMENT

Based on the drawing provided, the proposed development includes the following.

- Removal of the subject trees.
- Removal of relocatable classrooms.
- Construction of new learning and science centre building.
- New site landscaping including new tree planting.



Demolition plan provided

**ADVERTISED
PLAN**



Landscape plan provided

ADVERTISED PLAN

10 ASSESSMENT

An assessment has been made of the significance of the canopy trees to be removed. It is proposed to remove all **42** canopy trees on the new building and landscape upgrade footprint. The retention value of these trees was assessed using the IACA STARS rating system (**Refer Table 1**). The stem rates significance of a tree in the landscape and then determines retention value. The retention value as assessed is as follows, and is shown on the demolition plan below.

- Priority for Retention (High)-**0 trees**
- Consider for Retention (Medium)-**12 trees**
- Consider for Removal (Low)-**23 trees**
- Priority for Removal-**7 trees**

In summary:

- No trees were rated as Priority for Retention (High) -Such trees, if present, are considered important for retention and should be retained and protected.
- Twelve trees were rated as Consider for Retention (Medium) - Such trees may be retained and protected but are considered less critical than high retention value trees.
- Twenty three trees were rated as Consider for Removal (Low) - These trees are not considered important for retention, nor require special works or design modification to be implemented for their retention.
- Seven trees were rated as Priority for Removal - These trees are considered hazardous, or in irreversible decline and should be removed irrespective of development.

As all trees are designated for removal, tree protection zones have not been plotted, or tree protection requirements specified.

Project Green was advised that, based on historic aerial images, the trees meet the requirements of 'planted' trees under Clause 52.17.

**ADVERTISED
PLAN**

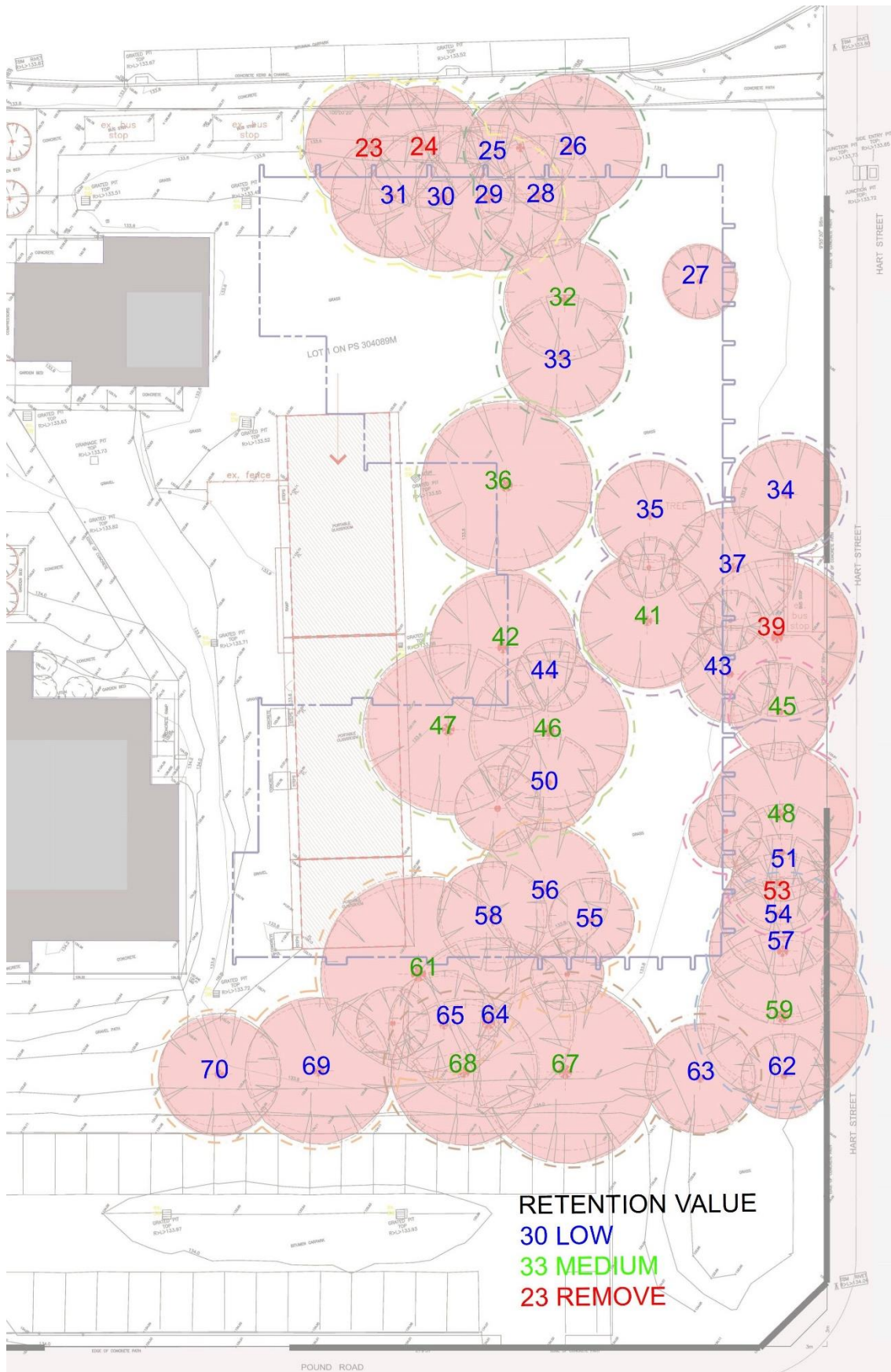


Figure 4: Canopy tree retention values

11 GLOSSARY

Crown Density	The estimated % of density of foliage present in the crown compared to that idealised for the genus and species when in good condition of normal vigour and expressed as a %, considering vigour, predation, environmental condition, epicormic shoots and dormancy (Draper & Richards, 2009).
Crown Lifting	The removal or reduction of lower branches.
Crown Thinning	The selective removal of branches that does not alter the overall size of the tree.
Health	Includes the tree's vigour exhibited by density of crown, leaf colour and the effectiveness of wound occlusion etc.
ISA	International Society of Arboriculture (USA)
Live Crown Ratio (LCR)	The proportion of live crown relative to tree height used to assist in the assessment of potentially hazardous trees.
Maintenance Pruning	The removal of any dead, dying or diseased material.
Major Encroachment	Where the total encroachment for development activities is greater than 20% of the TPZ or within the SRZ; as per AS4970-2025 Protection of trees on development sites.
Minor Encroachment	Where the total encroachment for development activities is less than 10% of the TPZ and outside of the SRZ; as per AS4970-2025 Protection of trees on development sites.
Project Arborist	The suitably qualified person responsible for carrying out the tree assessment, report preparation, consultation with designers, specifying tree protection measures, monitoring and certification.
Reaction Wood	Also termed Response Growth and comprised of either Tension or Compression Wood, it occurs as a result of gravity or injury.
Reduction Pruning	The removal of the ends of branches to lower internal lateral branches or stems in order to reduce the height and/or spread of the tree.
Size	Tree height and crown spread measured in metres.
Species profile	Attributes and characteristics of the species which includes size, longevity, structural integrity, shedding behaviour etc.
Structural Root Zone (SRZ)	The SRZ is an area required for tree stability. Any encroachment is considered to be 'major encroachment' and should only occur in consultation with a Project Arborist.
Structure	An assessment of tree stability as per species, environment, identifiable defects and remedial options.
Taper	In roots and branches; the decrease in diameter along a given length, usually reducing gradually in the distal direction (away from the point of attachment).
Tree Protection Zone (TPZ)	The TPZ is a combination of the root area and crown area requiring protection to ensure the tree remains viable. Potential encroachment is to be assessed by the Project Arborist.
Tree Risk Rating (TRR)	Expressed as being either <i>low</i> , <i>moderate</i> or <i>high</i> , any rating above <i>low</i> requires a remedial action to be undertaken.
Useful Life Expectancy (ULE)	This rating gives an estimate of the expected useful life span of the tree and takes into account age, life span of the species, local environmental conditions, location, and any suitable remedial options for identified issues.
Vigour	The capacity for an organism to respond to adverse conditions such as pests, disease or climatic challenges. Stored energy that can be depleted overtime with age and/or the experience of the subject.

Visual Tree Assessment A visual inspection of a tree from the ground undertaken by a trained arborist competent in determining tree type, structural integrity, health, growing environment and environmental benefits or impacts the tree may present. The assessment is used to determine suitable methods for managing the tree and the impact it may have on its immediate surrounds. The inspection is limited to those attributes observed on the day of inspection. No other investigative techniques are used unless stated otherwise.

12 BIBLIOGRAPHY

Draper, D.B & Richards P.A (2009) Dictionary for Managing Trees in Urban Environments, CSIRO Australia.

Matheney, N.P: & Clark, J.R (1994) Evaluation of Hazard Trees in Urban Areas. ISA Publications.

Matheney, N. P. & Clark, J.R. (1998). Trees and Development: A Technical Guide to Tree Preservation during Land Development. ISA Publications.

Nicolle D. (2006). Taller Eucalypts for Planting in Australia: Their Selection, Cultivation and Management.

Shigo, A.L. (1999) A New Tree Biology (9th edition) Sherwin Dodge Printers, Littleton, New Hampshire.

APPENDIX – TREE DATA SHEETS

**ADVERTISED
PLAN**

Appendix A Tree | Botanical Name: *Corymbia maculata* (Spotted Gum)

ID: PGSA00014023 | Fri 17 Apr 2026

EDEN4



Tree Overview

Tree Information

Health	Fair
Structure	Poor
Form	Atypical
Age class	Mature
Height (m)	11 - 15 Metres
Crown diameter N/S-E/W (m)	8 8

Retainability

Priority for Removal

Expected Life Expectancy: 3. Short <1-15 years

Significance: 3. Low Hazardous / Irreversible Decline

Tree Assessment

Legislative status	Canopy Tree
Average trunk circumference (m)	2.04
Diameter at Base (m)	0.64
Diameter at Standard Height (m)	0.54
Structural Root Zone radius (m)	2.74
Notional Root Zone radius (m)	6.45

Tight Unions Throughout, Some With Decay, Poses Risk To Public Footpath Adjacent To Tree.

Site Specific Notes

**ADVERTISED
PLAN**

Location Data

ID number	PGSA00014023
Latitude	-38.35157512941576
Longitude	143.57851039965226
Inspected by	Alex Quartley
Date	Fri 17 Apr 2026



Base



Base



Appendix A Tree | Botanical Name: *Eucalyptus sideroxylon* (Mugga Ironbark)

ID: PGSA00014024 | Fri 17 Apr 2026

EDEN4



Tree Overview

Tree Information

Health	Good	
Structure	Poor	
Form	Atypical	
Age class	Mature	
Height (m)	11 - 15 Metres	
Crown diameter N/S-E/W (m)	8	8

Retainability

Priority for Removal

Expected Life Expectancy: 3. Short <1-15 years

Significance: 3. Low Hazardous / Irreversible Decline

Tree Assessment

Legislative status	Canopy Tree
Average trunk circumference (m)	1.70
Diameter at Base (m)	0.64
Diameter at Standard Height (m)	0.46
Structural Root Zone radius (m)	2.74
Notional Root Zone radius (m)	5.52

Tight Union With Lean Over Public Footpath Adjacent To Tree.

Site Specific Notes

**ADVERTISED
PLAN**



Base



Base

Location Data

ID number	PGSA00014024
Latitude	-38.351582491444894
Longitude	143.57857477266862
Inspected by	Alex Quartley
Date	Fri 17 Apr 2026



Appendix A Tree | Botanical Name: *Eucalyptus sideroxylon* (Mugga Ironbark)

ID: PGSA00014025 | Fri 17 Apr 2026

EDEN4



Tree Overview

Tree Information

Health	Good	
Structure	Good	
Form	Typical	
Age class	Mature	
Height (m)	11 - 15 Metres	
Crown diameter N/S-E/W (m)	6	6

Retainability

Consider for Removal (Low)

Expected Life Expectancy: 3. Short <1-15 years

Significance: 3. Low Significance in Landscape

Tree Assessment

Legislative status	Canopy Tree
Average trunk circumference (m)	0.90
Diameter at Base (m)	0.42
Diameter at Standard Height (m)	0.29
Structural Root Zone radius (m)	2.30
Notional Root Zone radius (m)	3.48

Deadwood Present.

Site Specific Notes

**ADVERTISED
PLAN**



Base



Tree Overview

Location Data

ID number	PGSA00014025
Latitude	-38.35159090519157
Longitude	143.57864048678948
Inspected by	Alex Quartley
Date	Fri 17 Apr 2026





Tree Overview



Base



Tree Overview

Tree Information

Health	Good	
Structure	Fair	
Form	Typical	
Age class	Mature	
Height (m)	11 - 15 Metres	
Crown diameter N/S-E/W (m)	9	10

Retainability

Consider for Removal (Low)

Expected Life Expectancy: 3. Short <1-15 years

Significance: 3. Low Significance in Landscape

Location Data

ID number	PGSA00014026
Latitude	-38.35159258098967
Longitude	143.57870290619266
Inspected by	Alex Quartley
Date	Fri 17 Apr 2026

Tree Assessment

Legislative status	Canopy Tree
Average trunk circumference (m)	1.46
Diameter at Base (m)	0.68
Diameter at Standard Height (m)	0.46
Structural Root Zone radius (m)	2.81
Notional Root Zone radius (m)	5.52

Fair Structure, Heavy Laterals, Previous Failures.

Site Specific Notes

**ADVERTISED
PLAN**



Appendix A Tree | Botanical Name: *Eucalyptus* sp. (Gum Tree)

ID: PGSA00014027 | Fri 17 Apr 2026

EDEN4



Tree Overview



Base



Tree Overview

Tree Information

Health	Fair	
Structure	Poor	
Form	Typical	
Age class	Mature	
Height (m)	6 - 10 Metres	
Crown diameter N/S-E/W (m)	5	5

Retainability

Consider for Removal (Low)

Expected Life Expectancy: 3. Short <1-15 years

Significance: 3. Low Significance in Landscape

Location Data

ID number	PGSA00014027
Latitude	-38.3517298300911
Longitude	143.57882561725512
Inspected by	Alex Quartley
Date	Fri 17 Apr 2026

Tree Assessment

Legislative status	Canopy Tree
Average trunk circumference (m)	1.06
Diameter at Base (m)	0.47
Diameter at Standard Height (m)	0.34
Structural Root Zone radius (m)	2.41
Notional Root Zone radius (m)	4.08

Dieback In Crown, Decay In Trunk.

Site Specific Notes

**ADVERTISED
PLAN**



Appendix A Tree | Botanical Name: *Eucalyptus sideroxylon* (Mugga Ironbark)

ID: PGSA00014028 | Fri 17 Apr 2026

EDEN4



Tree Overview



Base



Tree Overview

Tree Information

Health	Fair	
Structure	Fair	
Form	Typical	
Age class	Semi-Mature	
Height (m)	11 - 15 Metres	
Crown diameter N/S-E/W (m)	6	5

Retainability

Consider for Removal (Low)

Expected Life Expectancy: 3. Short <1-15 years

Significance: 3. Low Significance in Landscape

Location Data

ID number	PGSA00014028
Latitude	-38.35165200304636
Longitude	143.57867474299803
Inspected by	Alex Quartley
Date	Fri 17 Apr 2026

Tree Assessment

Legislative status	Canopy Tree
Average trunk circumference (m)	0.95
Diameter at Base (m)	0.32
Diameter at Standard Height (m)	0.30
Structural Root Zone radius (m)	2.05
Notional Root Zone radius (m)	3.60

Large Deadwood Present.

Site Specific Notes

**ADVERTISED
PLAN**



Appendix A Tree | Botanical Name: *Corymbia maculata* (Spotted Gum)

ID: PGSA00014029 | Fri 17 Apr 2026

EDEN4



Tree Overview



Base



Base

Tree Information

Health	Good	
Structure	Fair	
Form	Typical	
Age class	Mature	
Height (m)	11 - 15 Metres	
Crown diameter N/S-E/W (m)	8	8

Retainability

Consider for Removal (Low)	
Expected Life Expectancy: 3. Short <1-15 years	
Significance: 3. Low Significance in Landscape	

Location Data

ID number	PGSA00014029	
Latitude	-38.35163464970742	
Longitude	143.57862109881773	
Inspected by	Alex Quartley	
Date	Fri 17 Apr 2026	

Tree Assessment

Legislative status	Canopy Tree
Average trunk circumference (m)	1.55
Diameter at Base (m)	0.53
Diameter at Standard Height (m)	0.49
Structural Root Zone radius (m)	2.53
Notional Root Zone radius (m)	5.88

Tight Primary Union But Some Reaction Wood.

Site Specific Notes

ADVERTISED
PLAN



Appendix A Tree | Botanical Name: *Eucalyptus sideroxylon* (Mugga Ironbark)

ID: PGSA00014030 | Fri 17 Apr 2026

EDEN4



Tree Overview



Base



Tree Overview

Tree Information

Health	Good	
Structure	Fair	
Form	Atypical	
Age class	Mature	
Height (m)	11 - 15 Metres	
Crown diameter N/S-E/W (m)	10	7

Retainability

Consider for Removal (Low)

Expected Life Expectancy: 3. Short <1-15 years

Significance: 3. Low Significance in Landscape

Location Data

ID number	PGSA00014030
Latitude	-38.3516325462721
Longitude	143.57856410187617
Inspected by	Alex Quartley
Date	Fri 17 Apr 2026

Tree Assessment

Legislative status	Canopy Tree
Average trunk circumference (m)	1.30
Diameter at Base (m)	0.43
Diameter at Standard Height (m)	0.40
Structural Root Zone radius (m)	2.32
Notional Root Zone radius (m)	4.80

Tree Has A Lean With Tight Primary Union.

Site Specific Notes

**ADVERTISED
PLAN**





Tree Overview

Tree Information

Health	Good	
Structure	Fair	
Form	Typical	
Age class	Semi-Mature	
Height (m)	11 - 15 Metres	
Crown diameter N/S-E/W (m)	7	7

Retainability

Consider for Removal (Low)

Expected Life Expectancy: 3. Short <1-15 years

Significance: 3. Low Significance in Landscape

Location Data

ID number	PGSA00014031
Latitude	-38.35161887394112
Longitude	143.57851313990489
Inspected by	Alex Quartley
Date	Fri 17 Apr 2026

Tree Assessment

Legislative status	Canopy Tree
Average trunk circumference (m)	1.18
Diameter at Base (m)	0.41
Diameter at Standard Height (m)	0.37
Structural Root Zone radius (m)	2.28
Notional Root Zone radius (m)	4.44

Sapwood Decay In Trunk

Site Specific Notes

**ADVERTISED
PLAN**



Base



Tree Defect



Appendix A Tree | Botanical Name: *Eucalyptus* sp. (Gum Tree)

ID: PGSA00014032 | Fri 17 Apr 2026

EDEN4



Tree Overview

Tree Information

Health	Good	
Structure	Fair	
Form	Atypical	
Age class	Mature	
Height (m)	11 - 15 Metres	
Crown diameter N/S-E/W (m)	9	6

Retainability

Consider for Removal (Low)

Expected Life Expectancy: 3. Short <1-15 years

Significance: 3. Low Significance in Landscape

Tree Assessment

Legislative status	Canopy Tree
Average trunk circumference (m)	0.86
Diameter at Base (m)	0.49
Diameter at Standard Height (m)	0.37
Structural Root Zone radius (m)	2.45
Notional Root Zone radius (m)	4.41

Fair Structure, Some Decay In Trunk.

Site Specific Notes

**ADVERTISED
PLAN**



Base



Base

Location Data

ID number	PGSA00014032
Latitude	-38.35172457150963
Longitude	143.5786941890134
Inspected by	Alex Quartley
Date	Fri 17 Apr 2026



Appendix A Tree | Botanical Name: *Eucalyptus* sp. (Gum Tree)

ID: PGSA00014033 | Fri 17 Apr 2026

EDEN4



Tree Overview

Tree Information

Health	Good	
Structure	Good	
Form	Typical	
Age class	Mature	
Height (m)	11 - 15 Metres	
Crown diameter N/S-E/W (m)	8	8

Retainability

Consider for Retention (Medium)

Expected Life Expectancy: 2. Medium 15-40 years

Significance: 3. Low Significance in Landscape

Location Data

ID number	PGSA00014033
Latitude	-38.351769795297784
Longitude	143.57868077796832
Inspected by	Alex Quartley
Date	Fri 17 Apr 2026

Tree Assessment

Legislative status	Canopy Tree
Average trunk circumference (m)	1.31
Diameter at Base (m)	0.54
Diameter at Standard Height (m)	0.48
Structural Root Zone radius (m)	2.55
Notional Root Zone radius (m)	5.76

Site Specific Notes

**ADVERTISED
PLAN**



Base



Tree Overview





Tree Overview



Base



Tree Overview

Tree Information

Health	Good	
Structure	Fair	
Form	Atypical	
Age class	Mature	
Height (m)	6 - 10 Metres	
Crown diameter N/S-E/W (m)	9	7

Retainability

Consider for Removal (Low)

Expected Life Expectancy: 3. Short <1-15 years

Significance: 3. Low Significance in Landscape

Location Data

ID number	PGSA00014034
Latitude	-38.35188180293057
Longitude	143.5788591448678
Inspected by	Alex Quartley
Date	Fri 17 Apr 2026

Tree Assessment

Legislative status	Canopy Tree
Average trunk circumference (m)	1.02
Diameter at Base (m)	0.78
Diameter at Standard Height (m)	0.36
Structural Root Zone radius (m)	2.98
Notional Root Zone radius (m)	4.32

Epicormic Shoots At The Base And Fair Structure

Site Specific Notes

ADVERTISED PLAN



Appendix A Tree | Botanical Name: *Eucalyptus caesia* ssp. *magna* (Silver Princess)

ID: PGSA00014035 | Fri 17 Apr 2026

EDEN4



Tree Overview

Tree Information

Health	Good	
Structure	Fair	
Form	Typical	
Age class	Semi-Mature	
Height (m)	6 - 10 Metres	
Crown diameter N/S-E/W (m)	6	6

Retainability

Consider for Removal (Low)

Expected Life Expectancy: 3. Short <1-15 years

Significance: 3. Low Significance in Landscape

Location Data

ID number	PGSA00014035
Latitude	-38.351869708218004
Longitude	143.57872570496932
Inspected by	Alex Quartley
Date	Fri 17 Apr 2026

Tree Assessment

Legislative status	Canopy Tree
Average trunk circumference (m)	1.11
Diameter at Base (m)	0.36
Diameter at Standard Height (m)	0.34
Structural Root Zone radius (m)	2.15
Notional Root Zone radius (m)	4.08

Primary Union Inclusion.

Site Specific Notes

**ADVERTISED
PLAN**



Base



Tree Overview



Appendix A Tree | Botanical Name: *Eucalyptus sideroxylon* (Mugga Ironbark)

ID: PGSA00014036 | Fri 17 Apr 2026

EDEN4



Tree Overview

Tree Information

Health	Good	
Structure	Good	
Form	Typical	
Age class	Mature	
Height (m)	11 - 15 Metres	
Crown diameter N/S-E/W (m)	10	11

Retainability

Consider for Retention (Medium)

Expected Life Expectancy: 2. Medium 15-40 years

Significance: 3. Low Significance in Landscape

Location Data

ID number	PGSA00014036
Latitude	-38.35184972564499
Longitude	143.5785808656825
Inspected by	Alex Quartley
Date	Fri 17 Apr 2026

Tree Assessment

Legislative status	Canopy Tree
Average trunk circumference (m)	1.70
Diameter at Base (m)	0.61
Diameter at Standard Height (m)	0.54
Structural Root Zone radius (m)	2.69
Notional Root Zone radius (m)	6.48

Site Specific Notes

**ADVERTISED
PLAN**



Base



Tree Overview





Tree Overview



Base



Tree Overview

Tree Information

Health	Good	
Structure	Good	
Form	Typical	
Age class	Semi-Mature	
Height (m)	11 - 15 Metres	
Crown diameter N/S-E/W (m)	5	5

Retainability

Consider for Removal (Low)

Expected Life Expectancy: 3. Short <1-15 years

Significance: 3. Low Significance in Landscape

Location Data

ID number	PGSA00014037
Latitude	-38.35194227646311
Longitude	143.57883500498667
Inspected by	Alex Quartley
Date	Fri 17 Apr 2026

Tree Assessment

Legislative status	Canopy Tree
Average trunk circumference (m)	0.84
Diameter at Base (m)	0.28
Diameter at Standard Height (m)	0.25
Structural Root Zone radius (m)	1.94
Notional Root Zone radius (m)	3.00

Site Specific Notes

ADVERTISED PLAN



Appendix A Tree | Botanical Name: *Eucalyptus camaldulensis* (River Red Gum)

ID: PGSA00014038 | Fri 17 Apr 2026

EDEN4



Tree Overview

Tree Information

Health	Poor	
Structure	Poor	
Form	Atypical	
Age class	Semi-Mature	
Height (m)	6 - 10 Metres	
Crown diameter N/S-E/W (m)	3	2

Retainability

Priority for Removal

Expected Life Expectancy: 3. Short <1-15 years

Significance: 3. Low Hazardous / Irreversible Decline

Location Data

ID number	PGSA00014038
Latitude	-38.35193596618381
Longitude	143.5787303988351
Inspected by	Alex Quartley
Date	Fri 17 Apr 2026

Tree Assessment

Legislative status	Unregulated
Average trunk circumference (m)	0.81
Diameter at Base (m)	0.34
Diameter at Standard Height (m)	0.16
Structural Root Zone radius (m)	2.10
Notional Root Zone radius (m)	2.00

Main Leader Has Died

Site Specific Notes

**ADVERTISED
PLAN**



Base



Tree Overview





Tree Overview



Base



Tree Overview

Tree Information

Health	Good	
Structure	Poor	
Form	Atypical	
Age class	Mature	
Height (m)	11 - 15 Metres	
Crown diameter N/S-E/W (m)	9	8

Retainability

Priority for Removal
Expected Life Expectancy: 3. Short <1-15 years
Significance: 3. Low Hazardous / Irreversible Decline

Location Data

ID number	PGSA00014039
Latitude	-38.3519814527681
Longitude	143.5788353402628
Inspected by	Alex Quartley
Date	Fri 17 Apr 2026

Tree Assessment

Legislative status	Canopy Tree
Average trunk circumference (m)	0.90
Diameter at Base (m)	0.35
Diameter at Standard Height (m)	0.29
Structural Root Zone radius (m)	2.13
Notional Root Zone radius (m)	3.48

Trunk Lean With Heavy Laterals

Site Specific Notes

ADVERTISED
PLAN



Appendix A Tree | Botanical Name: *Corymbia ficifolia* (Red-flowering Gum)

ID: PGSA00014040 | Fri 17 Apr 2026

EDEN4



Tree Overview



Base



Tree Overview

Tree Information

Health	Fair	
Structure	Fair	
Form	Atypical	
Age class	Semi-Mature	
Height (m)	6 - 10 Metres	
Crown diameter N/S-E/W (m)	3	3

Retainability

Priority for Removal

Expected Life Expectancy: 3. Short <1-15 years

Significance: 3. Low Hazardous / Irreversible Decline

Location Data

ID number	PGSA00014040
Latitude	-38.351972776138616
Longitude	143.57877968442574
Inspected by	Alex Quartley
Date	Fri 17 Apr 2026

Tree Assessment

Legislative status	Unregulated
Average trunk circumference (m)	0.46
Diameter at Base (m)	0.28
Diameter at Standard Height (m)	0.21
Structural Root Zone radius (m)	1.94
Notional Root Zone radius (m)	2.53

Site Specific Notes

**ADVERTISED
PLAN**



Appendix A Tree | Botanical Name: *Eucalyptus globulus* (Tasmanian Blue Gum)

ID: PGSA00014041 | Fri 17 Apr 2026

EDEN4



Tree Overview

Tree Information

Health	Good	
Structure	Good	
Form	Typical	
Age class	Semi-Mature	
Height (m)	11 - 15 Metres	
Crown diameter N/S-E/W (m)	8	8

Tree Assessment

Legislative status	Canopy Tree
Average trunk circumference (m)	1.20
Diameter at Base (m)	0.43
Diameter at Standard Height (m)	0.37
Structural Root Zone radius (m)	2.32
Notional Root Zone radius (m)	4.44

Retainability

Consider for Retention (Medium)

Expected Life Expectancy: 2. Medium 15-40 years

Significance: 3. Low Significance in Landscape

Site Specific Notes

**ADVERTISED
PLAN**



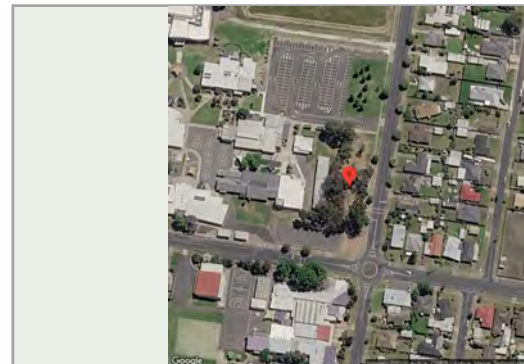
Base



Tree Overview

Location Data

ID number	PGSA00014041
Latitude	-38.35198066398364
Longitude	143.57870357674494
Inspected by	Alex Quartley
Date	Fri 17 Apr 2026



Appendix A Tree | Botanical Name: *Eucalyptus sideroxylon* (Mugga Ironbark)

ID: PGSA00014042 | Fri 17 Apr 2026

EDEN4



Tree Overview

Tree Information

Health	Good	
Structure	Good	
Form	Typical	
Age class	Mature	
Height (m)	11 - 15 Metres	
Crown diameter N/S-E/W (m)	11	10

Retainability

Consider for Retention (Medium)

Expected Life Expectancy: 2. Medium 15-40 years

Significance: 3. Low Significance in Landscape

Location Data

ID number	PGSA00014042	
Latitude	-38.351972776138616	
Longitude	143.57855806690588	
Inspected by	Alex Quartley	
Date	Fri 17 Apr 2026	

Tree Assessment

Legislative status	Canopy Tree
Average trunk circumference (m)	1.61
Diameter at Base (m)	0.56
Diameter at Standard Height (m)	0.50
Structural Root Zone radius (m)	2.59
Notional Root Zone radius (m)	6.00

Site Specific Notes

**ADVERTISED
PLAN**



Base



Tree Overview





Tree Overview

Tree Information

Health	Good	
Structure	Good	
Form	Typical	
Age class	Semi-Mature	
Height (m)	6 - 10 Metres	
Crown diameter N/S-E/W (m)	4	4

Retainability

Consider for Removal (Low)

Expected Life Expectancy: 3. Short <1-15 years

Significance: 3. Low Significance in Landscape

Location Data

ID number	PGSA00014043
Latitude	-38.35202003794779
Longitude	143.57880640853827
Inspected by	Alex Quartley
Date	Fri 17 Apr 2026

Tree Assessment

Legislative status	Canopy Tree
Average trunk circumference (m)	0.76
Diameter at Base (m)	0.31
Diameter at Standard Height (m)	0.26
Structural Root Zone radius (m)	2.02
Notional Root Zone radius (m)	3.12

Site Specific Notes

ADVERTISED PLAN



Base



Tree Overview



Appendix A Tree | Botanical Name: *Eucalyptus* sp. (Gum Tree)

ID: PGSA00014044 | Fri 17 Apr 2026

EDEN4



Tree Overview

Tree Information

Health	Fair	
Structure	Fair	
Form	Atypical	
Age class	Semi-Mature	
Height (m)	6 - 10 Metres	
Crown diameter N/S-E/W (m)	5	5

Retainability

Consider for Removal (Low)

Expected Life Expectancy: 3. Short <1-15 years

Significance: 3. Low Significance in Landscape

Location Data

ID number	PGSA00014044
Latitude	-38.35199374514199
Longitude	143.5786119483847
Inspected by	Alex Quartley
Date	Fri 17 Apr 2026

Tree Assessment

Legislative status	Canopy Tree
Average trunk circumference (m)	0.85
Diameter at Base (m)	0.28
Diameter at Standard Height (m)	0.25
Structural Root Zone radius (m)	1.94
Notional Root Zone radius (m)	2.96

Site Specific Notes

**ADVERTISED
PLAN**



Base



Tree Overview



Appendix A Tree | Botanical Name: *Corymbia ficifolia* (Red-flowering Gum)

ID: PGSA00014045 | Fri 17 Apr 2026

EDEN4



Tree Overview



Base



Tree Overview

Tree Information

Health	Good	
Structure	Good	
Form	Typical	
Age class	Semi-Mature	
Height (m)	6 - 10 Metres	
Crown diameter N/S-E/W (m)	5	6

Retainability

Consider for Retention (Medium)

Expected Life Expectancy: 2. Medium 15-40 years

Significance: 3. Low Significance in Landscape

Location Data

ID number	PGSA00014045	
Latitude	-38.35204527903237	
Longitude	143.5788379244942	
Inspected by	Alex Quartley	
Date	Fri 17 Apr 2026	

Tree Assessment

Legislative status	Canopy Tree
Average trunk circumference (m)	1.25
Diameter at Base (m)	0.44
Diameter at Standard Height (m)	0.38
Structural Root Zone radius (m)	2.34
Notional Root Zone radius (m)	4.56

Site Specific Notes

**ADVERTISED
PLAN**



Appendix A Tree | Botanical Name: *Eucalyptus sideroxylon* (Mugga Ironbark)

ID: PGSA00014046 | Fri 17 Apr 2026

EDEN4



Tree Overview

Tree Information

Health	Good	
Structure	Fair	
Form	Atypical	
Age class	Mature	
Height (m)	11 - 15 Metres	
Crown diameter N/S-E/W (m)	10	12

Retainability

Consider for Retention (Medium)

Expected Life Expectancy: 2. Medium 15-40 years

Significance: 3. Low Significance in Landscape

Location Data

ID number	PGSA00014046	
Latitude	-38.35203791705027	
Longitude	143.57860054899638	
Inspected by	Alex Quartley	
Date	Fri 17 Apr 2026	

Tree Assessment

Legislative status	Canopy Tree
Average trunk circumference (m)	1.90
Diameter at Base (m)	0.66
Diameter at Standard Height (m)	0.55
Structural Root Zone radius (m)	2.78
Notional Root Zone radius (m)	6.63

Tight Primary Union But Reaction Wood Present.

Site Specific Notes

**ADVERTISED
PLAN**



Base



Tree Overview



Appendix A Tree | Botanical Name: *Eucalyptus sideroxylon* (Mugga Ironbark)

ID: PGSA00014047 | Fri 17 Apr 2026

EDEN4



Tree Overview



Base



Tree Overview

Tree Information

Health	Good	
Structure	Good	
Form	Typical	
Age class	Mature	
Height (m)	11 - 15 Metres	
Crown diameter N/S-E/W (m)	13	13

Retainability

Consider for Retention (Medium)

Expected Life Expectancy: 2. Medium 15-40 years

Significance: 3. Low Significance in Landscape

Location Data

ID number	PGSA00014047	
Latitude	-38.35203896876204	
Longitude	143.57852008272593	
Inspected by	Alex Quartley	
Date	Fri 17 Apr 2026	

Tree Assessment

Legislative status	Canopy Tree
Average trunk circumference (m)	1.92
Diameter at Base (m)	0.66
Diameter at Standard Height (m)	0.61
Structural Root Zone radius (m)	2.78
Notional Root Zone radius (m)	7.32

Site Specific Notes

**ADVERTISED
PLAN**



Appendix A Tree | Botanical Name: *Eucalyptus grandis* (Flooded Gum)

ID: PGSA00014048 | Fri 17 Apr 2026

EDEN4



Tree Overview

Tree Information

Health	Good	
Structure	Good	
Form	Typical	
Age class	Semi-Mature	
Height (m)	11 - 15 Metres	
Crown diameter N/S-E/W (m)	10	8

Retainability

Consider for Retention (Medium)
Expected Life Expectancy: 2. Medium 15-40 years
Significance: 3. Low Significance in Landscape

Location Data

ID number	PGSA00014048
Latitude	-38.352117321246205
Longitude	143.57881378461306
Inspected by	Alex Quartley
Date	Fri 17 Apr 2026

Tree Assessment

Legislative status	Canopy Tree
Average trunk circumference (m)	1.21
Diameter at Base (m)	0.43
Diameter at Standard Height (m)	0.38
Structural Root Zone radius (m)	2.32
Notional Root Zone radius (m)	4.56

Site Specific Notes

ADVERTISED
PLAN



Base



Tree Overview



Appendix A Tree | Botanical Name: *Corymbia ficifolia* (Red-flowering Gum)

ID: PGSA00014049 | Fri 17 Apr 2026

EDEN4



Tree Overview

Tree Information

Health	Fair
Structure	Fair
Form	Atypical
Age class	Semi-Mature
Height (m)	6 - 10 Metres
Crown diameter N/S-E/W (m)	3 2

Retainability

Consider for Removal (Low)

Expected Life Expectancy: 3. Short <1-15 years

Significance: 3. Low Significance in Landscape

Location Data

ID number	PGSA00014049
Latitude	-38.35210838170532
Longitude	143.57873868276064
Inspected by	Alex Quartley
Date	Fri 17 Apr 2026

Tree Assessment

Legislative status	Unregulated
Average trunk circumference (m)	0.46
Diameter at Base (m)	0.29
Diameter at Standard Height (m)	0.22
Structural Root Zone radius (m)	1.97
Notional Root Zone radius (m)	2.64

Site Specific Notes

**ADVERTISED
PLAN**



Base



Tree Overview



Appendix A Tree | Botanical Name: *Eucalyptus camaldulensis* (River Red Gum)

ID: PGSA00014050 | Fri 17 Apr 2026

EDEN4



Tree Overview

Tree Information

Health	Good	
Structure	Fair	
Form	Atypical	
Age class	Semi-Mature	
Height (m)	11 - 15 Metres	
Crown diameter N/S-E/W (m)	7	7

Retainability

Consider for Removal (Low)

Expected Life Expectancy: 3. Short <1-15 years

Significance: 3. Low Significance in Landscape

Location Data

ID number	PGSA00014050
Latitude	-38.35208208893161
Longitude	143.57859987844412
Inspected by	Alex Quartley
Date	Fri 17 Apr 2026

Tree Assessment

Legislative status	Canopy Tree
Average trunk circumference (m)	1.03
Diameter at Base (m)	0.33
Diameter at Standard Height (m)	0.30
Structural Root Zone radius (m)	2.08
Notional Root Zone radius (m)	3.60

Tree Is Leaning

Site Specific Notes

**ADVERTISED
PLAN**



Base



Tree Overview



Appendix A Tree | Botanical Name: *Corymbia ficifolia* (Red-flowering Gum)

ID: PGSA00014051 | Fri 17 Apr 2026

EDEN4



Tree Overview

Tree Information

Health	Good	
Structure	Fair	
Form	Typical	
Age class	Semi-Mature	
Height (m)	6 - 10 Metres	
Crown diameter N/S-E/W (m)	4	4

Retainability

Consider for Removal (Low)

Expected Life Expectancy: 3. Short <1-15 years

Significance: 3. Low Significance in Landscape

Location Data

ID number	PGSA00014051
Latitude	-38.3521370408178
Longitude	143.57881009657567
Inspected by	Alex Quartley
Date	Fri 17 Apr 2026

Tree Assessment

Legislative status	Canopy Tree
Average trunk circumference (m)	0.95
Diameter at Base (m)	0.31
Diameter at Standard Height (m)	0.28
Structural Root Zone radius (m)	2.02
Notional Root Zone radius (m)	3.36

Site Specific Notes

**ADVERTISED
PLAN**



Base



Tree Overview



Appendix A Tree | Botanical Name: *Eucalyptus sideroxylon* (Mugga Ironbark)

ID: PGSA00014052 | Fri 17 Apr 2026

EDEN4



Tree Overview



Base



Tree Overview

Tree Information

Health	Good	
Structure	Poor	
Form	Atypical	
Age class	Semi-Mature	
Height (m)	6 - 10 Metres	
Crown diameter N/S-E/W (m)	3	2

Retainability

Priority for Removal

Expected Life Expectancy: 3. Short <1-15 years

Significance: 3. Low Hazardous / Irreversible Decline

Location Data

ID number	PGSA00014052
Latitude	-38.35208682163158
Longitude	143.5785073422331
Inspected by	Alex Quartley
Date	Fri 17 Apr 2026

Tree Assessment

Legislative status	Unregulated
Average trunk circumference (m)	1.00
Diameter at Base (m)	0.55
Diameter at Standard Height (m)	0.45
Structural Root Zone radius (m)	2.57
Notional Root Zone radius (m)	5.35

Tree Has Been Retrenched.

Site Specific Notes

**ADVERTISED
PLAN**





Tree Overview

Tree Information

Health	Poor
Structure	Poor
Form	Atypical
Age class	Semi-Mature
Height (m)	11 - 15 Metres
Crown diameter N/S-E/W (m)	4 3

Tree Assessment

Legislative status	Canopy Tree
Average trunk circumference (m)	0.57
Diameter at Base (m)	0.22
Diameter at Standard Height (m)	0.18
Structural Root Zone radius (m)	1.75
Notional Root Zone radius (m)	2.16

Poor Health And Structure, Too Suppressed By Neighbouring Trees

Retainability

Priority for Removal

Expected Life Expectancy: 3. Short <1-15 years

Significance: 3. Low Hazardous / Irreversible Decline

Site Specific Notes

ADVERTISED
PLAN



Base



Tree Overview

Location Data

ID number	PGSA00014053
Latitude	-38.3521564974565
Longitude	143.57880774964278
Inspected by	Alex Quartley
Date	Fri 17 Apr 2026



Appendix A Tree | Botanical Name: *Corymbia ficifolia* (Red-flowering Gum)

ID: PGSA00014054 | Fri 17 Apr 2026

EDEN4



Tree Overview

Tree Information

Health	Good	
Structure	Fair	
Form	Typical	
Age class	Mature	
Height (m)	11 - 15 Metres	
Crown diameter N/S-E/W (m)	6	6

Retainability

Consider for Removal (Low)

Expected Life Expectancy: 3. Short <1-15 years

Significance: 3. Low Significance in Landscape

Tree Assessment

Legislative status	Canopy Tree
Average trunk circumference (m)	1.25
Diameter at Base (m)	0.44
Diameter at Standard Height (m)	0.38
Structural Root Zone radius (m)	2.34
Notional Root Zone radius (m)	4.56

Suppressed By Neighbouring Tree

Site Specific Notes

**ADVERTISED
PLAN**



Base



Tree Overview

Location Data

ID number	PGSA00014054
Latitude	-38.352175691162536
Longitude	143.578803055777
Inspected by	Alex Quartley
Date	Fri 17 Apr 2026



Appendix A Tree | Botanical Name: Agonis flexuosa (Willow Myrtle)

ID: PGSA00014055 | Fri 17 Apr 2026

EDEN4



Tree Overview

Tree Information

Health	Fair	
Structure	Fair	
Form	Atypical	
Age class	Semi-Mature	
Height (m)	6 - 10 Metres	
Crown diameter N/S-E/W (m)	4	4

Retainability

Priority for Removal

Expected Life Expectancy: 3. Short <1-15 years

Significance: 3. Low Hazardous / Irreversible Decline

Tree Assessment

Legislative status	Canopy Tree
Average trunk circumference (m)	0.43
Diameter at Base (m)	0.20
Diameter at Standard Height (m)	0.20
Structural Root Zone radius (m)	1.68
Notional Root Zone radius (m)	2.40

Site Specific Notes

**ADVERTISED
PLAN**



Base



Tree Overview

Location Data

ID number	PGSA00014055
Latitude	-38.35215360525378
Longitude	143.57863474716132
Inspected by	Alex Quartley
Date	Fri 17 Apr 2026



Appendix A Tree | Botanical Name: *Eucalyptus sideroxylon* (Mugga Ironbark)

ID: PGSA00014056 | Fri 17 Apr 2026

EDEN4



Tree Overview

Tree Information

Health	Good	
Structure	Fair	
Form	Atypical	
Age class	Mature	
Height (m)	11 - 15 Metres	
Crown diameter N/S-E/W (m)	11	9

Retainability

Consider for Removal (Low)

Expected Life Expectancy: 3. Short <1-15 years

Significance: 3. Low Significance in Landscape

Location Data

ID number	PGSA00014056
Latitude	-38.35212836420696
Longitude	143.5785931729216
Inspected by	Alex Quartley
Date	Fri 17 Apr 2026

Tree Assessment

Legislative status	Canopy Tree
Average trunk circumference (m)	1.18
Diameter at Base (m)	0.67
Diameter at Standard Height (m)	0.48
Structural Root Zone radius (m)	2.80
Notional Root Zone radius (m)	5.77

Tight Primary Union.

Site Specific Notes

**ADVERTISED
PLAN**



Base



Base



Appendix A Tree | Botanical Name: *Eucalyptus sideroxylon* (Mugga Ironbark)

ID: PGSA00014057 | Fri 17 Apr 2026

EDEN4



Tree Overview

Tree Information

Health	Good	
Structure	Fair	
Form	Atypical	
Age class	Mature	
Height (m)	11 - 15 Metres	
Crown diameter N/S-E/W (m)	9	7

Retainability

Consider for Removal (Low)

Expected Life Expectancy: 3. Short <1-15 years

Significance: 3. Low Significance in Landscape

Tree Assessment

Legislative status	Canopy Tree
Average trunk circumference (m)	2.03
Diameter at Base (m)	0.94
Diameter at Standard Height (m)	0.59
Structural Root Zone radius (m)	3.22
Notional Root Zone radius (m)	7.08

Poor Crown Structure

Site Specific Notes

**ADVERTISED
PLAN**



Base



Tree Overview

Location Data

ID number	PGSA00014057
Latitude	-38.35221204210454
Longitude	143.5788077711678
Inspected by	Alex Quartley
Date	Fri 17 Apr 2026



Appendix A Tree | Botanical Name: *Eucalyptus camaldulensis* (River Red Gum)

ID: PGSA00014058 | Fri 17 Apr 2026

EDEN4



Tree Overview

Tree Information

Health	Good	
Structure	Fair	
Form	Atypical	
Age class	Semi-Mature	
Height (m)	6 - 10 Metres	
Crown diameter N/S-E/W (m)	6	5

Retainability

Consider for Removal (Low)

Expected Life Expectancy: 3. Short <1-15 years

Significance: 3. Low Significance in Landscape

Tree Assessment

Legislative status	Canopy Tree
Average trunk circumference (m)	0.54
Diameter at Base (m)	0.49
Diameter at Standard Height (m)	0.30
Structural Root Zone radius (m)	2.45
Notional Root Zone radius (m)	3.55

Site Specific Notes

**ADVERTISED
PLAN**



Base



Tree Overview

Location Data

ID number	PGSA00014058
Latitude	-38.352138422419465
Longitude	143.57850937541488
Inspected by	Alex Quartley
Date	Fri 17 Apr 2026



Appendix A Tree | Botanical Name: *Eucalyptus grandis* (Flooded Gum)

ID: PGSA00014059 | Fri 17 Apr 2026

EDEN4



Tree Overview

Tree Information

Health	Good	
Structure	Good	
Form	Typical	
Age class	Mature	
Height (m)	16 - 20 Metres	
Crown diameter N/S-E/W (m)	12	12

Retainability

Consider for Retention (Medium)

Expected Life Expectancy: 2. Medium 15-40 years

Significance: 3. Low Significance in Landscape

Location Data

ID number	PGSA00014059	
Latitude	-38.35224464508402	
Longitude	143.57880441840652	
Inspected by	Alex Quartley	
Date	Fri 17 Apr 2026	

Tree Assessment

Legislative status	Canopy Tree
Average trunk circumference (m)	1.80
Diameter at Base (m)	0.63
Diameter at Standard Height (m)	0.55
Structural Root Zone radius (m)	2.73
Notional Root Zone radius (m)	6.60

Site Specific Notes

**ADVERTISED
PLAN**



Base



Tree Overview



Appendix A Tree | Botanical Name: *Melaleuca styphelioides* (Prickly Paperbark)

ID: PGSA00014060 | Fri 17 Apr 2026

EDEN4



Tree Overview

Tree Information

Health	Fair	
Structure	Fair	
Form	Atypical	
Age class	Semi-Mature	
Height (m)	6 - 10 Metres	
Crown diameter N/S-E/W (m)	3	3

Retainability

Priority for Removal

Expected Life Expectancy: 3. Short <1-15 years

Significance: 3. Low Environmental Pest / Noxious Weed Species

Location Data

ID number	PGSA00014060
Latitude	-38.35219942159242
Longitude	143.57861465211872
Inspected by	Alex Quartley
Date	Fri 17 Apr 2026

Tree Assessment

Legislative status	Unregulated
Average trunk circumference (m)	0.45
Diameter at Base (m)	0.24
Diameter at Standard Height (m)	0.21
Structural Root Zone radius (m)	1.82
Notional Root Zone radius (m)	2.55

Site Specific Notes

**ADVERTISED
PLAN**



Base



Tree Overview



Appendix A Tree | Botanical Name: *Eucalyptus camaldulensis* (River Red Gum)

ID: PGSA00014061 | Fri 17 Apr 2026

EDEN4



Tree Overview

Tree Information

Health	Good	
Structure	Fair	
Form	Typical	
Age class	Mature	
Height (m)	16 - 20 Metres	
Crown diameter N/S-E/W (m)	12	10

Retainability

Consider for Retention (Medium)

Expected Life Expectancy: 2. Medium 15-40 years

Significance: 3. Low Significance in Landscape

Location Data

ID number	PGSA00014061
Latitude	-38.3521694478673
Longitude	143.57842890914444
Inspected by	Alex Quartley
Date	Fri 17 Apr 2026

Tree Assessment

Legislative status	Canopy Tree
Average trunk circumference (m)	1.75
Diameter at Base (m)	0.60
Diameter at Standard Height (m)	0.54
Structural Root Zone radius (m)	2.67
Notional Root Zone radius (m)	6.48

Primary Union Inclusion But Lots Of Reaction Wood

Site Specific Notes

**ADVERTISED
PLAN**



Base



Tree Overview



Appendix A Tree | Botanical Name: *Eucalyptus grandis* (Flooded Gum)

ID: PGSA00014062 | Fri 17 Apr 2026

EDEN4



Tree Overview

Tree Information

Health	Good	
Structure	Good	
Form	Typical	
Age class	Mature	
Height (m)	16 - 20 Metres	
Crown diameter N/S-E/W (m)	9	7

Retainability

Consider for Removal (Low)	
Expected Life Expectancy: 2. Medium 15-40 years	
Significance: 3. Low Environmental Pest / Noxious Weed Species	

Location Data

ID number	PGSA00014062
Latitude	-38.35230531670702
Longitude	143.57880627111155
Inspected by	Alex Quartley
Date	Fri 17 Apr 2026

Tree Assessment

Legislative status	Canopy Tree
Average trunk circumference (m)	1.14
Diameter at Base (m)	0.37
Diameter at Standard Height (m)	0.34
Structural Root Zone radius (m)	2.18
Notional Root Zone radius (m)	4.08

Site Specific Notes

ADVERTISED PLAN



Base



Tree Overview



Appendix A Tree | Botanical Name: *Eucalyptus camaldulensis* (River Red Gum)

ID: PGSA00014063 | Fri 17 Apr 2026

EDEN4



Tree Information

Health	Good	
Structure	Good	
Form	Typical	
Age class	Mature	
Height (m)	16 - 20 Metres	
Crown diameter N/S-E/W (m)	8	8

Retainability

Consider for Removal (Low)

Expected Life Expectancy: 2. Medium 15-40 years

Significance: 3. Low Environmental Pest / Noxious Weed Species

Tree Assessment

Legislative status	Canopy Tree
Average trunk circumference (m)	1.25
Diameter at Base (m)	0.44
Diameter at Standard Height (m)	0.39
Structural Root Zone radius (m)	2.34
Notional Root Zone radius (m)	4.68

Site Specific Notes

**ADVERTISED
PLAN**



Base



Tree Overview

Location Data

ID number	PGSA00014063
Latitude	-38.35229453670028
Longitude	143.57870132968384
Inspected by	Alex Quartley
Date	Fri 17 Apr 2026



Appendix A Tree | Botanical Name: *Eucalyptus camaldulensis* (River Red Gum)

ID: PGSA00014064 | Fri 17 Apr 2026

EDEN4



Tree Overview



Base



Tree Overview

Tree Information

Health	Good	
Structure	Fair	
Form	Atypical	
Age class	Mature	
Height (m)	16 - 20 Metres	
Crown diameter N/S-E/W (m)	13	13

Retainability

Consider for Removal (Low)

Expected Life Expectancy: 3. Short <1-15 years

Significance: 3. Low Significance in Landscape

Location Data

ID number	PGSA00014064	
Latitude	-38.35222249466273	
Longitude	143.57852832720238	
Inspected by	Alex Quartley	
Date	Fri 17 Apr 2026	

Tree Assessment

Legislative status	Canopy Tree
Average trunk circumference (m)	1.90
Diameter at Base (m)	0.65
Diameter at Standard Height (m)	0.57
Structural Root Zone radius (m)	2.76
Notional Root Zone radius (m)	6.84

Large Multiple Stems From Tight Union

Site Specific Notes

**ADVERTISED
PLAN**





Tree Overview

Tree Information

Health	Good	
Structure	Fair	
Form	Atypical	
Age class	Semi-Mature	
Height (m)	11 - 15 Metres	
Crown diameter N/S-E/W (m)	6	8

Retainability

Consider for Removal (Low)

Expected Life Expectancy: 3. Short <1-15 years

Significance: 3. Low Significance in Landscape

Location Data

ID number	PGSA00014065
Latitude	-38.35221723611705
Longitude	143.5784512136932
Inspected by	Alex Quartley
Date	Fri 17 Apr 2026

Tree Assessment

Legislative status	Canopy Tree
Average trunk circumference (m)	1.15
Diameter at Base (m)	0.43
Diameter at Standard Height (m)	0.31
Structural Root Zone radius (m)	2.32
Notional Root Zone radius (m)	3.73

Primary Union Inclusion

Site Specific Notes

ADVERTISED PLAN



Base



Base



Appendix A Tree | Botanical Name: *Eucalyptus camaldulensis* (River Red Gum)

ID: PGSA00014066 | Fri 17 Apr 2026

EDEN4



Tree Overview



Base



Tree Overview

Tree Information

Health	Fair	
Structure	Fair	
Form	Typical	
Age class	Semi-Mature	
Height (m)	6 - 10 Metres	
Crown diameter N/S-E/W (m)	2	2

Retainability

Consider for Removal (Low)

Expected Life Expectancy: 3. Short <1-15 years

Significance: 3. Low Significance in Landscape

Location Data

ID number	PGSA00014066
Latitude	-38.352201777747425
Longitude	143.57839675934434
Inspected by	Alex Quartley
Date	Fri 17 Apr 2026

Tree Assessment

Legislative status	Unregulated
Average trunk circumference (m)	0.53
Diameter at Base (m)	0.19
Diameter at Standard Height (m)	0.16
Structural Root Zone radius (m)	1.65
Notional Root Zone radius (m)	2.00

Site Specific Notes

**ADVERTISED
PLAN**





Tree Overview

Tree Information

Health	Good	
Structure	Good	
Form	Typical	
Age class	Mature	
Height (m)	16 - 20 Metres	
Crown diameter N/S-E/W (m)	10	11

Retainability

Consider for Retention (Medium)	
Expected Life Expectancy: 2. Medium 15-40 years	
Significance: 3. Low Significance in Landscape	

Location Data

ID number	PGSA00014067	
Latitude	-38.35228538859656	
Longitude	143.5785670796168	
Inspected by	Alex Quartley	
Date	Fri 17 Apr 2026	

Tree Assessment

Legislative status	Canopy Tree
Average trunk circumference (m)	1.76
Diameter at Base (m)	0.58
Diameter at Standard Height (m)	0.53
Structural Root Zone radius (m)	2.63
Notional Root Zone radius (m)	6.36

Site Specific Notes

ADVERTISED PLAN



Base



Tree Overview





Tree Overview

Tree Information

Health	Good	
Structure	Good	
Form	Typical	
Age class	Mature	
Height (m)	16 - 20 Metres	
Crown diameter N/S-E/W (m)	8	8

Tree Assessment

Legislative status	Canopy Tree
Average trunk circumference (m)	1.23
Diameter at Base (m)	0.41
Diameter at Standard Height (m)	0.37
Structural Root Zone radius (m)	2.28
Notional Root Zone radius (m)	4.44

Retainability

Consider for Retention (Medium)
Expected Life Expectancy: 2. Medium 15-40 years
Significance: 3. Low Significance in Landscape

Site Specific Notes

ADVERTISED
PLAN



Base



Tree Overview

Location Data

ID number	PGSA00014068
Latitude	-38.35227066468045
Longitude	143.5784772256148
Inspected by	Alex Quartley
Date	Fri 17 Apr 2026



Appendix A Tree | Botanical Name: *Eucalyptus camaldulensis* (River Red Gum)

ID: PGSA00014069 | Fri 17 Apr 2026

EDEN4



Tree Overview

Tree Information

Health	Good	
Structure	Poor	
Form	Atypical	
Age class	Mature	
Height (m)	11 - 15 Metres	
Crown diameter N/S-E/W (m)	7	7

Retainability

Priority for Removal

Expected Life Expectancy: 3. Short <1-15 years

Significance: 3. Low Hazardous / Irreversible Decline

Tree Assessment

Legislative status	Canopy Tree
Average trunk circumference (m)	2.00
Diameter at Base (m)	0.65
Diameter at Standard Height (m)	0.59
Structural Root Zone radius (m)	2.76
Notional Root Zone radius (m)	7.08

Upper Crown Has Been Pollarded And Needs On Going Management To Mitigate Risk Of Poor Attachment Failures.

Site Specific Notes

**ADVERTISED
PLAN**



Base



Tree Overview

Location Data

ID number	PGSA00014069
Latitude	-38.352264354429764
Longitude	143.57834751761075
Inspected by	Alex Quartley
Date	Fri 17 Apr 2026



Appendix A Tree | Botanical Name: *Eucalyptus camaldulensis* (River Red Gum)

ID: PGSA00014070 | Fri 17 Apr 2026

EDEN4



Tree Information

Health	Good	
Structure	Poor	
Form	Atypical	
Age class	Mature	
Height (m)	11 - 15 Metres	
Crown diameter N/S-E/W (m)	8	9

Retainability

Priority for Removal

Expected Life Expectancy: 3. Short <1-15 years

Significance: 3. Low Hazardous / Irreversible Decline

Tree Assessment

Legislative status	Canopy Tree
Average trunk circumference (m)	2.30
Diameter at Base (m)	0.77
Diameter at Standard Height (m)	0.69
Structural Root Zone radius (m)	2.97
Notional Root Zone radius (m)	8.28

Upper Crown Has Been Pollarded And Needs On Going Management To Mitigate Risk Of Poor Attachment Failures.

Site Specific Notes

**ADVERTISED
PLAN**

Location Data

ID number	PGSA00014070
Latitude	-38.35225147099959
Longitude	143.57825263446685
Inspected by	Alex Quartley
Date	Fri 17 Apr 2026



Base



Tree Overview

