

Prepared by MGS Architects  
December 2025

This copied document to be made available for the sole purpose of enabling its consideration and review as part of a planning process under the Planning and Environment Act 1987. The document must not be used for any purpose which may breach any copyright

# Loreto College Mornane Centre Design Response Report

# Contents

MGS Architects  
Established 1985  
Level 4, 1 Nicholson Street  
East Melbourne Victoria  
3002 Australia  
T 03 9291 9900  
mgsarchitects.com.au  
ABN 13 006 488 302  
ACN 006 488 302

**Directors**  
Cameron Lacy  
Catherine Ranger  
Elliet Spring  
Joshua Wheeler

**Contact**  
Catherine Ranger  
cranger@mgsarchitects.com.au

**Client**  
Loreto College Ballarat

**Client representative**  
Brenton Riordan  
Business Manager  
Loreto College Ballarat

**Consultant team**  
Urban Design and Architecture  
MGS Architects

Landscape Architecture  
SBLA

Town PlanningHeritage  
Urbis

Heritage  
Bryce Raworth

**Document**  
Loreto College Mornane Centre  
Design Reponse Report  
Prepared by MGS Architects

**This copied document to be made available for the sole purpose of enabling its consideration and review as part of a planning process under the Planning and Environment Act 1987. The document must not be used for any purpose which may breach any copyright**

<b>1</b>	<b>Master plan summary</b>
<b>2</b>	<b>Existing conditions</b>
<b>3</b>	<b>Design narrative</b>
<b>4</b>	<b>Material palette</b>
<b>5</b>	<b>3D views</b>

MGS Architects acknowledges the Traditional Owners of Country throughout Australia and recognises their continuing connection to land, waters and culture. We pay our respects to their Elders past and present and extend this respect to all Aboriginal and Torres Strait Islander people.

**ADVERTISED  
PLAN**



Date	Status	Compiled by	Authorised
04 December 2025	Town Planning	AL	CR
16 February 2026	Town Planning - DTP RFI	AL	CR

# Master plan summary

## Campus vision, key moves



### WELCOMING AND CLEAR ARRIVAL

A welcoming entry and reception to enhance the arrival experience for visitors, and provide a clarity of movement and ease of circulation.



### CONSOLIDATED HEART

A reconfigured campus core anchoring wellbeing spaces, providing equal proximity and access for all year levels.



### THE FELICITY WALK

The campus is linked from east to west, providing clarity of movement, doors to main buildings and spaces, access to activated landscapes for learning, and linking wellbeing functions.



### AGE AND STAGE APPROPRIATE LEARNING JOURNEYS

A redistribution of year levels and classrooms across the campus to appropriately accommodate pedagogical requirements.



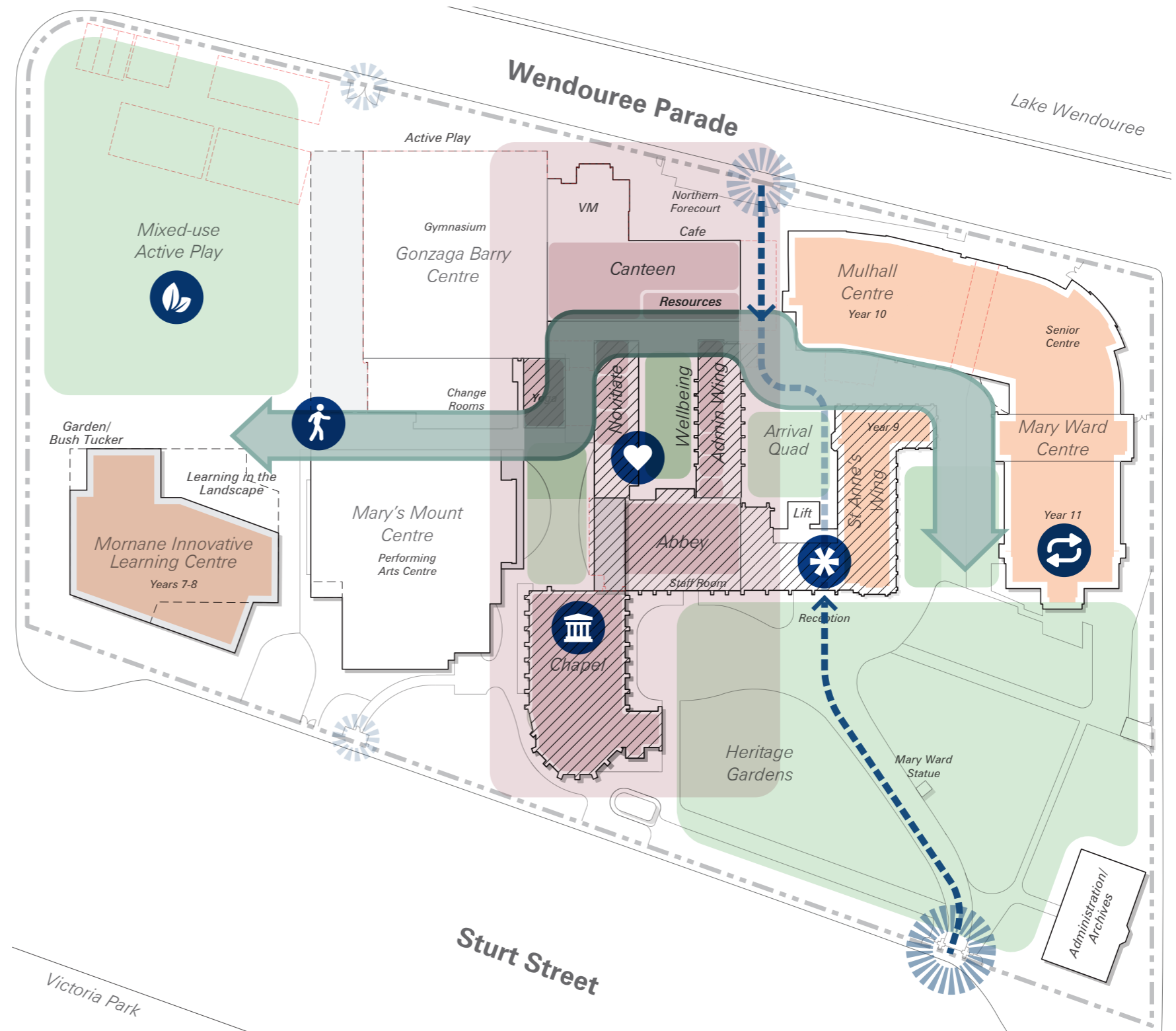
### CONNECTING TO NATURE

Every person has equal opportunity to connect to nature and landscape in various ways that suit each year level and age group.



### ENDURING HERITAGE BUILDINGS

All heritage buildings are carefully maintained, provide universal access, and offer quality bathrooms and storage.



**This copied document to be made available for the sole purpose of enabling its consideration and review as part of a planning process under the Planning and Environment Act 1987. The document must not be used for any purpose which may breach any copyright**

**ADVERTISED PLAN**

## Mornane Centre visioning exercise

What we heard

“ Want to be the jewel in the crown of Ballarat.  
For females, you can get to science through design.  
Every space is an opportunity to strengthen culture.  
Young people will soon be going into the world without going to university.  
They need to be world-ready.  
Students are incredibly open to change.  
Large cohorts of girls are very ready for contemporary learning.  
Support a culture of creation.  
All learning occurs when you're outside your comfort zone.  
New senior learning precinct.  
Challenging – but within supportive walls.  
We're moving forward and getting ready for the real world.  
That the girls feel energised to learn.  
Need the environment to match the culture.”

This copied document to be made available  
for the sole purpose of enabling  
its consideration and review as  
part of a planning process under the  
Planning and Environment Act 1987.  
The document must not be used for any  
purpose which may breach any  
copyright

# Existing conditions

Aerial photograph

# ADVERTISED PLAN

This copied document to be made available for the sole purpose of enabling its consideration and review as part of a planning process under the Planning and Environment Act 1987. The document must not be used for any purpose which may breach any copyright



**Existing conditions**  
Remarkable heritage context

**ADVERTISED  
PLAN**

This copied document to be made available for the sole purpose of enabling its consideration and review as part of a planning process under the Planning and Environment Act 1987. The document must not be used for any purpose which may breach any copyright

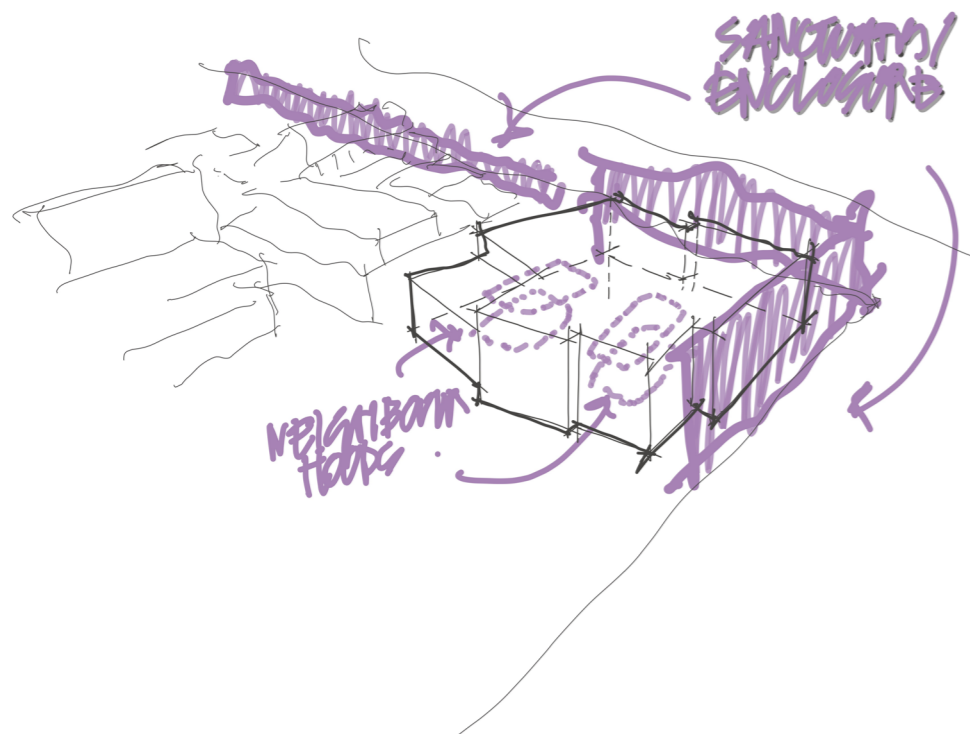


# Design narrative

## Context and identity

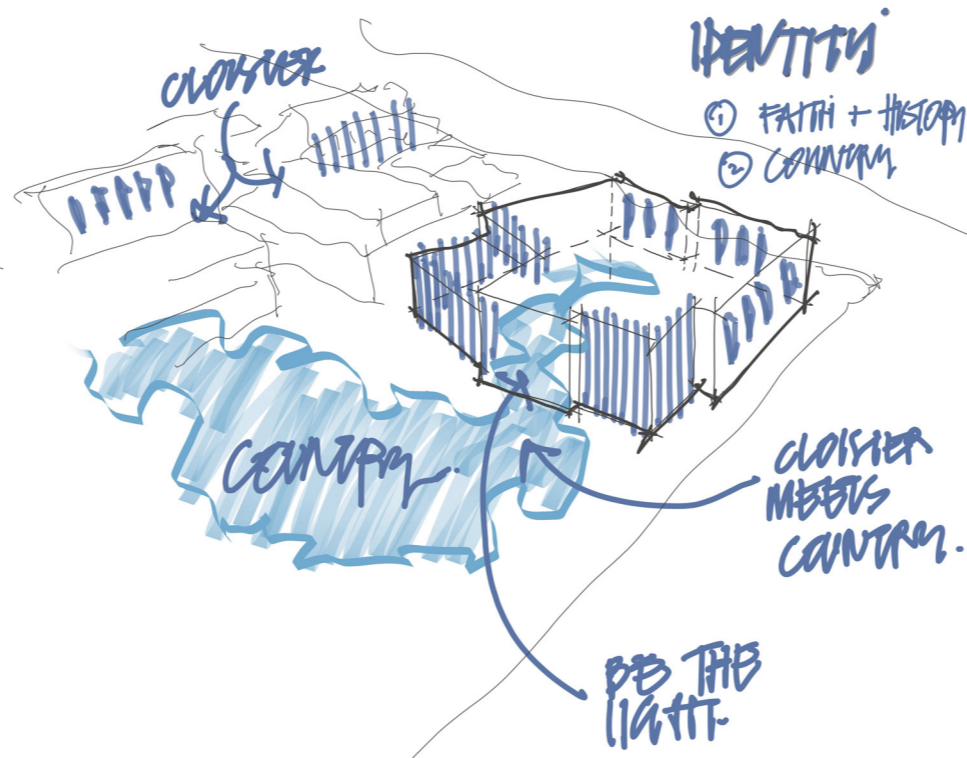
**ADVERTISED  
PLAN**

This copied document to be made available for the sole purpose of enabling its consideration and review as part of a planning process under the Planning and Environment Act 1987. The document must not be used for any purpose which may breach any copyright



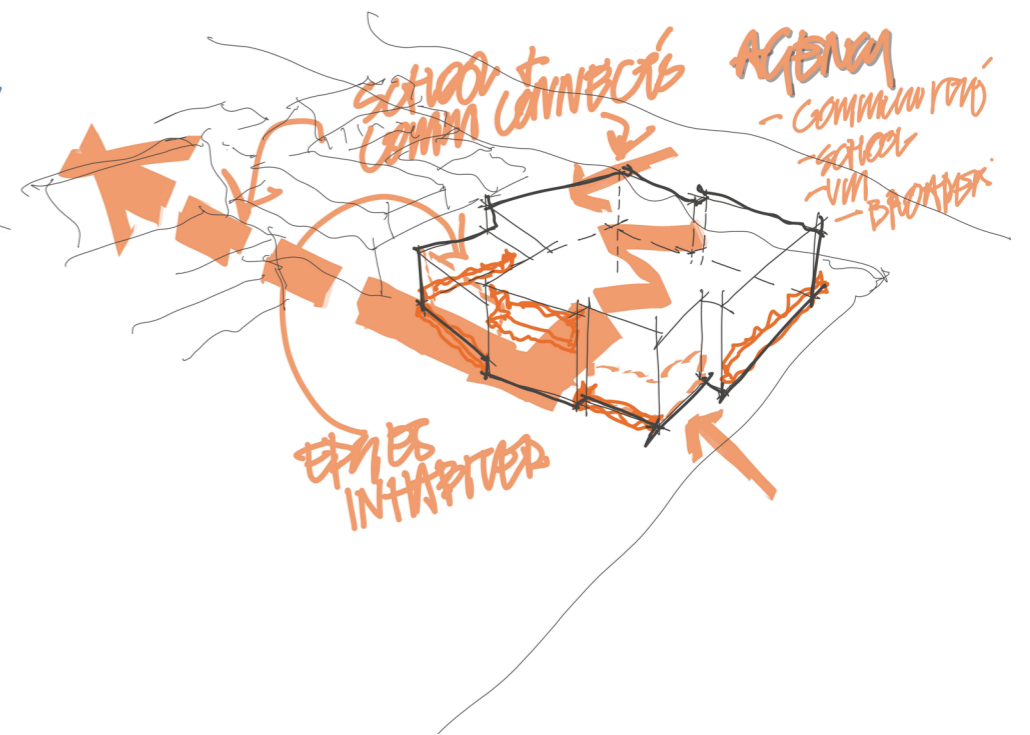
### New campus edge

The historic red-brick fence that has long characterised the campus informs a new boundary condition reinterpreted as an inhabited edge at the base of the building, with views in and out that quietly showcase learning. The building balances sanctuary and safety with a clear and visible presence of college life.



### Identity

The building's identity is shaped by a modern and innovative approach to senior learning, anchored in the rich historic fabric of Mary's Mount with its cloisters and heritage rhythms and enriched by Wadawurrung Country and the pre-settlement landscape of Lake Wendouree. It looks forward while remaining deeply connected to place.



### Connection and agency

The building strengthens campus connection through its approach along Felicity Walk and its relationship to the MMC and the Sturt Street entry. Transparent facades, inhabited edges and visible circulation support student connection, agency and independence while welcoming the broader community through events, guest speakers and VCE-VM programs.

## Design narrative

Be the light

## ADVERTISED PLAN



### Illuminating learning

Mother Mornane saw education as illumination, a shift toward clarity, confidence and care.

Light becomes a way to think about students as they develop as people.

Daylight offers a steady, consistent quality that reduces visual noise, gives cues for orientation and helps students understand time, season and the shape of the day.



### Learning lanterns

Learning lanterns are breakout spaces that weave through the building and link learning areas across floors.

They support larger gatherings, smaller groups and quiet work, creating natural zones of transition.

Internally they make learning visible and shared; externally their glazed expression gives the building a recognisable glow.

**This copied document to be made available for the sole purpose of enabling its consideration and review as part of a planning process under the Planning and Environment Act 1987. The document must not be used for any purpose which may breach any copyright**



### Solid base

A grounded base draws on the heritage brick wall at Mary's Mount and the forms and material qualities of the western volcanic plain, including basalt flows and the layered geology under Lake Wendouree.

Textured, sculpted masonry forms durable edges and moments for interaction and display, anchoring the science, design and technology spaces and supporting the lighter levels above.



### Clouds

Clouds indicate lightness, change and the possibility of what comes next.

Senior years carry this sense of shifting direction and steady forward movement.

The idea informs the lighter upper forms of the building, expressed through scalloped geometry, broad outlooks, softer daylight and a material character that sits above the heavier base.

# Design narrative

## Interfaces

### ADVERTISED PLAN



#### Arrival and Cloister / Oval edge

This is the welcome point for students, parents and visitors.

A clear, sheltered entry anchors the western side of campus and connects directly to the oval.

The cloister continues the movement along Felicity Walk and supports everyday circulation.

Its scale, cover and rhythm give this edge presence without dominating it.



#### Hamilton Avenue edge

The western boundary forms a civic frontage to the street.

It remains robust and low maintenance, with planting and seating at ground level.

The edge becomes an inhabited zone that uses the site efficiently and presents a safe, active boundary.



#### Sturt Street edge

Facing Sturt Street, the building presents a public frontage rather than a blank wall.

The school's identity is visible without revealing too much.

This edge creates a legible and secure approach for students and visitors and establishes a clear connection between school and city.



#### Active edge – showcasing learning

Beginning at the Sturt Street entry, this edge highlights visible learning and daily activity.

Display areas and the kitchen sit where they can be seen from inside and out.

The café opens to a covered outdoor area that works for everyday use, events and informal supervision.

**This copied document to be made available for the sole purpose of enabling its consideration and review as part of a planning process under the Planning and Environment Act 1987. The document must not be used for any purpose which may breach any copyright**

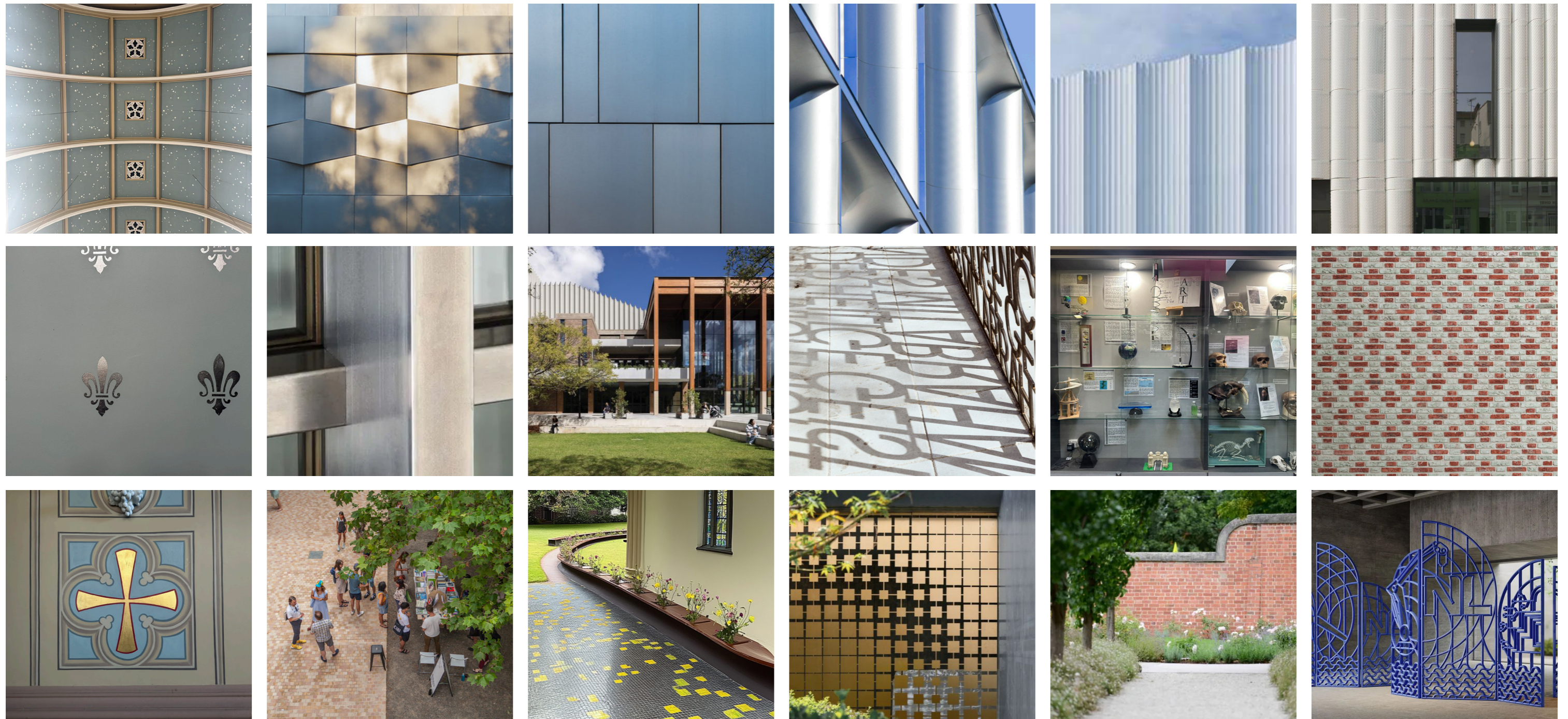
# Material palette

## Mood board

The palette connects heritage and innovation and grounds the building in Ballarat's volcanic geology. A tactile brick base aligns with basalt and the College's masonry fabric. Lighter metal and glass define the upper levels and give the structure a clearer, more open profile. Subtle motifs set into introduce specific references that link material, story and place.

**ADVERTISED  
PLAN**

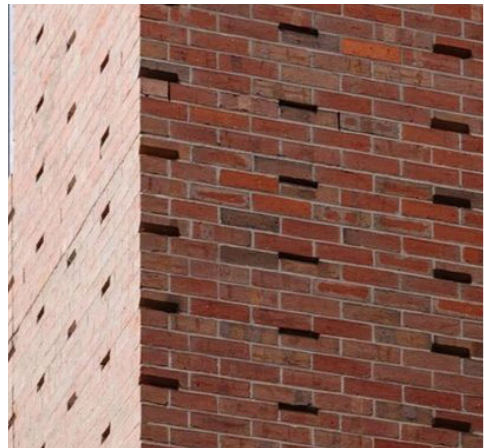
This copied document to be made available for the sole purpose of enabling its consideration and review as part of a planning process under the Planning and Environment Act 1987. The document must not be used for any purpose which may breach any copyright



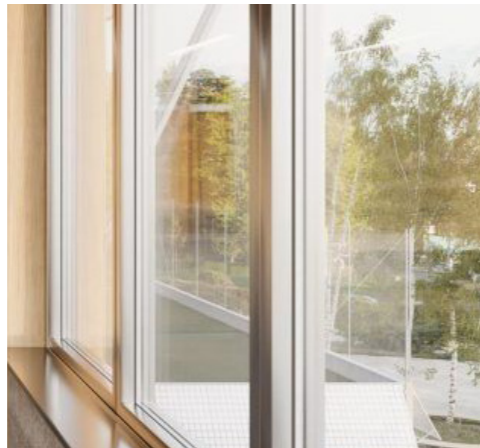
# Material palette

## Selections

This copied document to be made available for the sole purpose of enabling its consideration and review as part of a planning process under the Planning and Environment Act 1987. The document must not be used for any purpose which may breach any copyright



**BRK1**



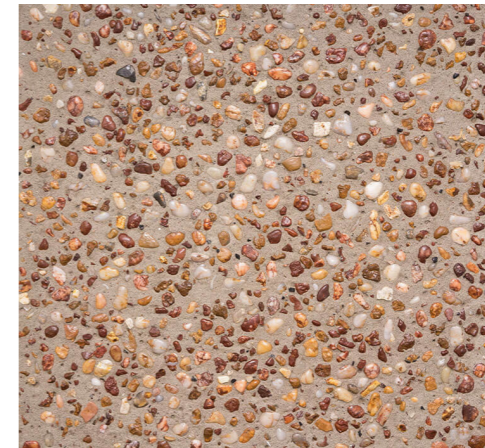
**GL1**



**MC1**



**MC2**



**BRK1** Brick pressed clay - red

**GL1** Glazing

**MC1** Curved metal cladding

**MC2** Flat / embossed metal cladding

--- Exposed aggregate concrete paving

--- Gabion walls

**ADVERTISED  
PLAN**

## View 1

Hamilton Avenue and Sturt Street corner

**ADVERTISED  
PLAN**



## View 2

Sturt Street interface / south façade

**ADVERTISED  
PLAN**



This copied document to be made available for the sole purpose of enabling its consideration and review as part of a planning process under the Planning and Environment Act 1987. The document must not be used for any purpose which may breach any copyright

## View 3

Oval interface / north façade

**ADVERTISED  
PLAN**



This copied document to be made available for the sole purpose of enabling its consideration and review as part of a planning process under the Planning and Environment Act 1987. The document must not be used for any purpose which may breach any copyright

**View 4**  
Hamilton Avenue streetscape

**ADVERTISED  
PLAN**



This copied document to be made available for the sole purpose of enabling its consideration and review as part of a planning process under the Planning and Environment Act 1987. The document must not be used for any purpose which may breach any copyright