



FOSTERVILLE SOLAR FARM

COMMUNITY ENGAGEMENT PLAN

DECEMBER 2021

**ADVERTISED
PLAN**

Prepared for FRV Services Australia Pty Ltd



Powering a Sustainable Future

This copied document to be made available for the sole purpose of enabling its consideration and review as part of a planning process under the Planning and Environment Act 1987. The document must not be used for any purpose which may breach any copyright



Prepared for

FRV Services Australia Pty Ltd

Version	Author	Date	Description of changes
1	Remi Rauline/Tim Doolan	6/12/21	First draft
2	Tim Doolan	13/12/21	Second draft for planning application lodgement

Prepared by

Energy Forms

Level 8, 91 William Street, Melbourne

© December 14, 2021 Energy Forms Pty Ltd

The information contained in this document produced by Energy Forms and is solely for the use of the Client identified on this page for the purpose for which it has been prepared by Energy Forms and undertakes no duty to or accepts any responsibility to any third party who may rely upon this document. All rights reserved. No section or element of this document may be removed from this document, reproduced, electronically stored or transmitted in any form without the written permission of Energy Forms Pty Ltd.

This copied document to be made available for the sole purpose of enabling its consideration and review as part of a planning process under the Planning and Environment Act 1987. The document must not be used for any purpose which may breach any copyright

**ADVERTISED
PLAN**

TABLE OF CONTENTS

1	INTRODUCTION	1
2	ABOUT FRV SERVICES AUSTRALIA PTY LTD	2
3	PROJECT DETAILS	3
3.1	Project Location	3
	Project Overview	4
3.2	Project timeline	4
3.3	Impact/mitigations and opportunities	5
4	CONTEXT	8
4.1	The community	8
4.2	Existing solar farm in the area	8
4.3	The local strategies	8
5	THE COMMUNICATION PROCESS	9
5.1	Guiding principles	9
5.2	Objectives	9
5.3	Management of community expectations	10
5.4	Key messages	10
5.5	Engagement Tools/Strategies	11
5.6	Stakeholder and audience analysis	12
5.7	Action plan	13
5.8	Community feedback opportunities and registration procedure	16
5.9	Monitoring and Evaluation	17

This copied document to be made available for the sole purpose of enabling its consideration and review as part of a planning process under the Planning and Environment Act 1987. The document must not be used for any purpose which may breach any copyright

ADVERTISED PLAN

Terms and Definitions

Term	Definition
Community	This term is interchangeable with 'stakeholder'. It refers to anyone who is affected by or has an interest in the operation or an associated activity. Local council and regulatory bodies should also be included as part of community.
Councils	City of Greater Bendigo and Campaspe Shire Council Councillors, management and staff
DELWP	Victorian Government Department of Environment, Land, Water and Planning
EES	Environmental Effect Statement
EPA	Environment Protection Authority
GW	Gigawatt
GWh	Gigawatt Hours
Large-scale	A scale of power infrastructure associated with generating, storing feeding energy into the grid to supply multiple end users (approx. 100+).
Media	Representatives from any media outlet including, radio, newspaper, television and online
MW	Megawatt
MWh	Megawatt Hours
'the Project'	Fosterville Solar Farm
Residents Neighbours	Residents and landowners located in close proximity to the proposed site
State Government and Federal Government Agencies	Agencies with direct relevance to the Project
Values	Personal standards that direct our opinions and actions.

ADVERTISED PLAN

This copied document to be made available for the sole purpose of enabling its consideration and review as part of a planning process under the Planning and Environment Act 1987. The document must not be used for any purpose which may breach any copyright

1 INTRODUCTION

This community engagement plan report (the Plan) outlines the communication and engagement activities that will be executed as part of community engagement for the proposed development of the Fosterville Solar Farm (the Project).

The Plan outlines the approach to community engagement for the Project prior to and following lodgement of an application for a planning permit with the Department of Environment, Land, Water and Planning (DELWP), through construction to energisation.

Local communities and stakeholders have recently been involved in a similar engagement process with the development of the Axedale Solar Farm neighbouring the Project to the east, developed by UPC Renewables.

The Plan aims to tailor communication to avoid community engagement fatigue. However, comprehensive consultation and engagement will still be necessary to ensure accurate information about the impacts of the Fosterville Solar Farm is being communicated to the community and key stakeholders.

This Plan is a living document and designed to be updated based on outcomes from the ongoing engagement and consultation activities.

The Plan is in line with the principles of the 2004 International Association of Public Participation, as listed below:

- Informing
- Consulting
- Involving
- Collaborating
- Reporting

ADVERTISED PLAN

This copied document to be made available for the sole purpose of enabling its consideration and review as part of a planning process under the Planning and Environment Act 1987. The document must not be used for any purpose which may breach any copyright

2 ABOUT FRV SERVICES AUSTRALIA PTY LTD

FRV Services Australia Pty Ltd ([FRV](#)) is a global renewable energy solutions provider and leading solar developer.

FRV has been active in Australia since 2010 and is a leader in solar development, both in Australia and overseas. FRV was the first company to deliver a Project-financed solar farm (the Royalla Solar Farm near Canberra) that has been operating since August 2014. This project was the winner of the first solar auction held by the ACT government in 2013. FRV is also responsible for the Moree Solar Farm located in northern New South Wales, which has been operating since March 2016.

FRV are currently completing construction of the Winton Solar Farm, in Winton, Victoria. The Winton Solar Farm was selected for the Victorian Renewable Energy Auction Scheme (VREAS) to support the Victorian Renewable Energy Target (VRET) of 50% by 2030. The aim of the VRET is to reduce Victoria's greenhouse gas emissions intensity by up to 2.2 million metric tonnes. The Winton Solar Farm created approximately 150 jobs, and FRV continues to support and deliver other community obligations under the VRET Support Agreement.

In October 2018 FRV signed a Power Purchase Agreement with Snowy Hydro Limited for Goonumbra Solar Farm (NSW, 84MWp, operating), making Winton and Goonumbra Solar Farms FRV's fifth and sixth large scale solar projects in Australia. In early 2020 FRV acquired Sebastopol Solar Farm (NSW, 110MWp) and signed a Power Purchase Agreement with Snowy Hydro Limited in February 2020. The project has reached financial close and construction started in October 2020. Additionally, FRV completed the development of Metz Solar Farm in NSW and construction commenced in early 2021.

FRV has a current Australian portfolio that includes:

- Royalla Solar Farm – 24MWp – Operational since 2015
- Moree Solar Farm – 70 MWp – Operational since 2016
- Clare Solar Farm – 125MWp – Operational since 2017
- Lilyvale Solar Farm – 125MWp – Operational since 2019
- Goonumbra Solar Farm – 83.7MWp – Operational since 2020
- Winton Solar Farm – 106MWp – Construction complete
- Sebastopol Solar Farm – 90MWp – Under Construction
- Metz Solar Farm - 115 MWp – Under Construction
- Chaff Mill Solar Farm – 125MWp – Development Approval Received
- Bluewater Solar Farm – 80MWp – Development Approval Received
- Walla Walla Solar Farm – 300MWac - Development Approval Received
- Ravenswood Solar Farm – 63MWac - Development Approval Received
- Viewbank Solar Farm – 75MWac – Under Development

**ADVERTISED
PLAN**

This copied document to be made available for the sole purpose of enabling its consideration and review as part of a planning process under the Planning and Environment Act 1987. The document must not be used for any purpose which may breach any copyright

3 PROJECT DETAILS

3.1 PROJECT LOCATION

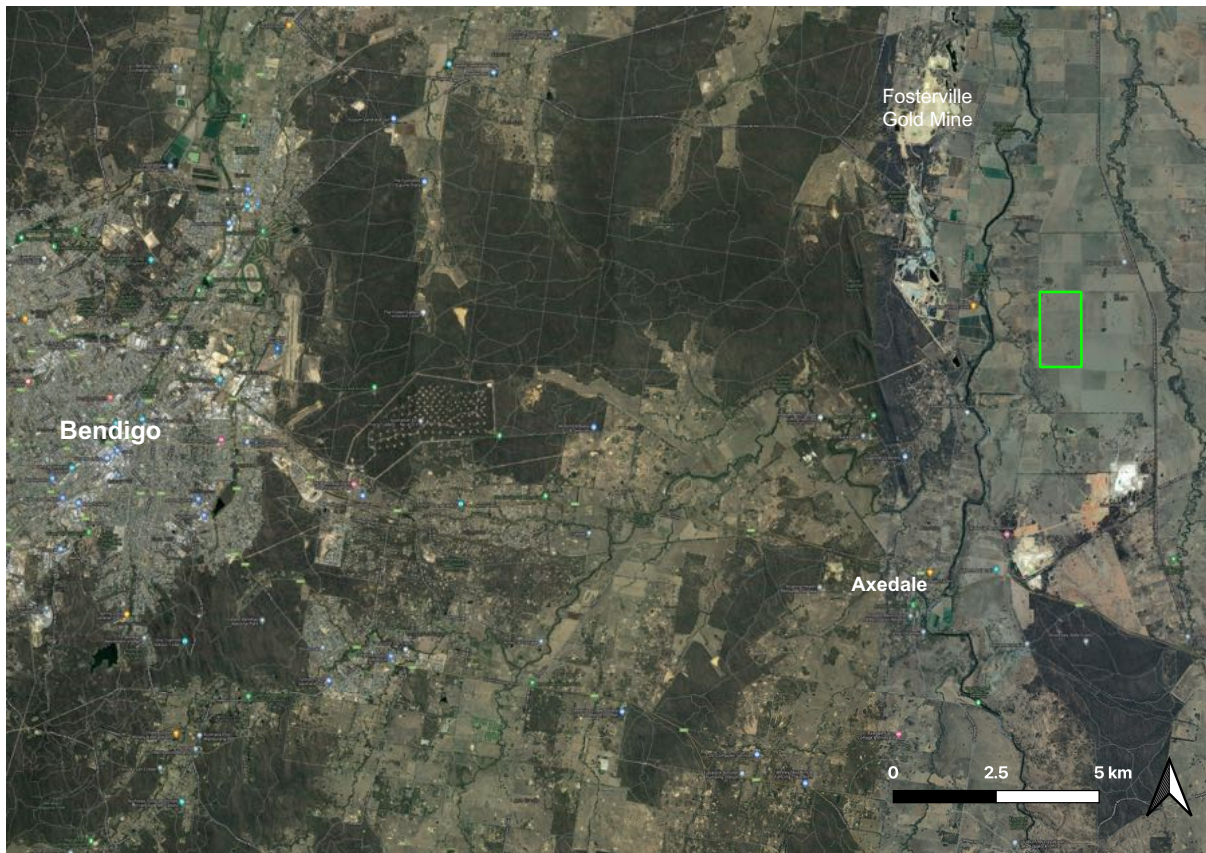


FIGURE 1 CONTEXT PLAN OF THE PROJECT

The Project is located at the intersection of Brownes Lane and Russells Bridge Road in Axedale, Victoria.

This copied document to be made available for the sole purpose of enabling its consideration and review as part of a planning process under the Planning and Environment Act 1987. The document must not be used for any purpose which may breach any copyright

**ADVERTISED
PLAN**

PROJECT OVERVIEW

Location	Approximately 20 kilometres east of Bendigo and 6 kilometres north-east of Axedale, Victoria. The site is located within the City of Greater Bendigo council area.
Site	The site is 183-ha of cleared farmland, owned by a single landowner. Land has been secured through an option to lease. Lease agreement to be executed on Financial Close of the Project.
Project Size	Approximately 100MWp(DC) of solar PV and 120MW/240MWhrs of Battery Energy Storage. This is approximately 175,000 solar panels.
Technology	Solar photovoltaic panels with single axis, tracking mount, string inverters and a Battery Energy Storage System.
Connection	The solar farm will have a substation on-site, and will be connected to the existing overhead line crossing the site: SP Ausnet's 220kV Bendigo to Shepparton Transmission Line.
Operating Life	Expected 30 year project life with 30 year lease (extension possible).

3.2 PROJECT TIMELINE

The indicative timeline for the Project is as follows:

- Planning Permit Application to be lodged in 2021
- Construction start estimated by the end of 2023
- Construction to run for approximately 14 months
- Operation estimated to start mid 2025

It is expected that construction of the solar farm would take approximately 14 months with the facility being operational for approximately 30 years. After the initial 30-year operating period, the solar farm would either:

- be decommissioned, removing all infrastructure and returning the site to its existing land capability, or
- the PV infrastructure would be upgraded to allow the site to continue to operate as a solar farm while the lease would be extended.

ADVERTISED PLAN

This copied document to be made available for the sole purpose of enabling its consideration and review as part of a planning process under the Planning and Environment Act 1987. The document must not be used for any purpose which may breach any copyright

3.3 IMPACT/MITIGATIONS AND OPPORTUNITIES

3.3.1 LOCAL IMPACT AND MITIGATION MEASURES

The proposal will change the nature of the commercial operation on the site from grazing and cropping to renewable energy generation and grazing.

This is considered to be a justifiable change based on the following grounds:

- The site is not high value strategic agricultural land that requires protection.
- Conversion of this land to a solar farm activity will not inhibit the ability for crop raising and grazing to continue on the neighbouring properties.
- The solar farm will allow continued grazing of sheep between the rows of solar panels which means it is not being completely removed from productive purposes in the region.
- At the end of the life of the Project the use and development can be reversed and the land can be returned to agricultural land by removing the infrastructure from the site. There will not be any lasting adverse impacts on the soil or productive capacity of the land.

The Project is immediately adjacent to Axedale Solar Farm, developed by UPC Renewables, which gained development approval in March 2020. According to their timeline, UPC hopes to commence operation late 2021- early 2022. Cumulative impacts will be assessed by the Project team as part of the development approval process, learning from the UPC development.

The Project will modify the visual character of the area by changing the land from agricultural purposes to a solar farm. However, this change to the character is not considered to be ultimately detrimental for the following reasons:

- The locality is not identified as a place of high visual character sensitivity.
- The site is not located on elevated or visually prominent land that would make it a dominant feature in the broader landscape.
- The proposal is located in an area that has very few dwellings and mitigation measures will be put in place to ensure the visual impacts are reduced or softened through setbacks and landscape screening.
- Infrastructure is generally modest in scale and therefore the Project will not be a dominant feature in the landscape. The scale of infrastructure will be further diminished through setbacks from private and public viewing points and potential vegetation screening.
- A solar farm design has basic visual parallels with crop raising activities due to its repetitive linear lines that run north/south and geometric shapes formed by the blocks and fields of panels.

The Project team will implement mitigation measures for impacts from noise, traffic and air quality during construction and operation. They will clarify hours of operations, possible noise curfews to minimise disturbance to nearby residents and dust suppression measures.

Glint and glare from photovoltaic panels is minimal and decisively lower than the reflectance generated by common reflective surfaces of built environments as they are

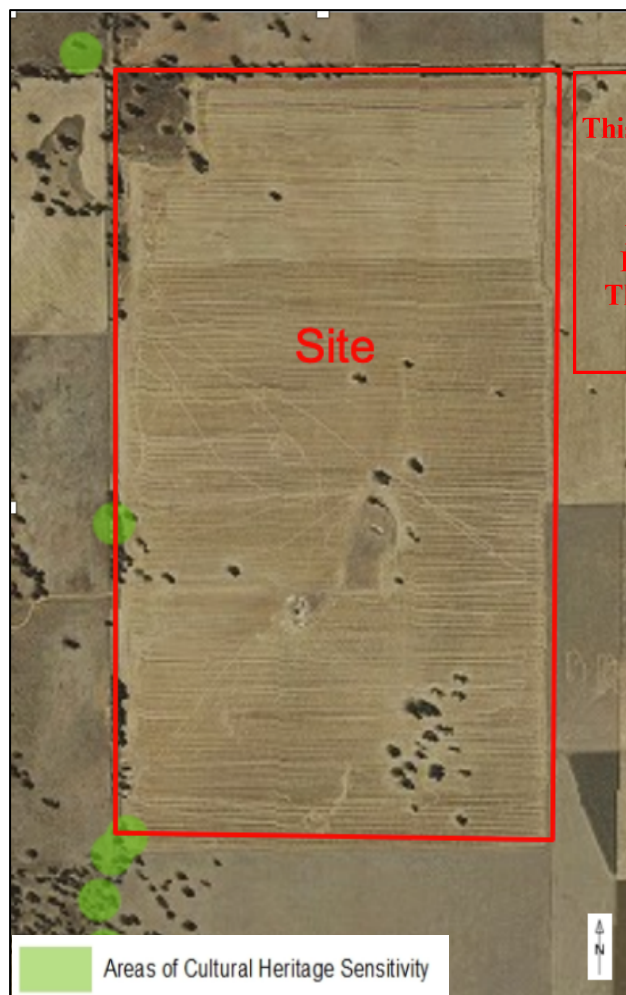
designed to absorb and not reflect light. A glint and glare study will be conducted to assess potential impacts and propose mitigation measures if appropriate.

An assessment of existing accommodation, bistros and food services will be conducted to cater for the Project needs. The objective will be to accommodate workers in Bendigo and in other nearby regional towns where possible to benefit the local and regional economy as a first priority.

A traffic impact assessment will be prepared to investigate the impact of the project on local and regional roads. FRV and its contractors will provide community information on major deliveries that may cause traffic congestion or delays.

The site is mostly cleared of vegetation. A few scattered paddock trees will be proposed for removal to enable the construction of the project, with an emphasis on retaining as much native vegetation as feasible. FRV will also investigate the option of sheep grazing to assist with vegetation management during the operating life.

Three small areas of cultural heritage sensitivity affect the western boundary of the site. FRV will design the facility to avoid those areas.



This copied document to be made available for the sole purpose of enabling its consideration and review as part of a planning process under the Planning and Environment Act 1987. The document must not be used for any purpose which may breach any copyright

FIGURE 2 AREAS OF ABORIGINAL CULTURAL HERITAGE SENSITIVITY (EXTRACT FROM ACHRIS)

**ADVERTISED
PLAN**

3.3.2 OPPORTUNITIES

Local opportunities

The Project will deliver a number of positive socio-economic impacts including the following:

- Increased employment during construction. Approximately 150 jobs will be generated through construction. There is the potential for local employment to be generated during the construction phase where suitable local contractors and labour hire are available. This outcome has been successfully achieved at a number of other solar farms being delivered across Australia. Local service providers have provided the following services:
 - Fencing services
 - Significant Civil works
 - Temporary Site Buildings
 - Manual Labour force for panel installation
 - Security services
 - Machinery Hire
- Local quarry, local pub and accommodation providers will also benefit from the Project through catering for the site workers.
- The Project will provide approximately 5 ongoing full time local jobs as part of its operations and maintenance requirements.
- The Project will provide an opportunity for the local community to build skills and capacity associated with the construction and operation of solar projects that can be transferred to the significant number of additional projects that are mooted for the region and across Victoria and Australia.
- FRV will implement a benefit sharing program aimed at improving the local natural environment and supporting community groups or initiatives that are aligned with the project (landcare revegetation projects, creek bed restoration projects, fauna re-introduction, etc).

This copied document to be made available for the sole purpose of enabling its consideration and review as part of a planning process under the Planning and Environment Act 1987. The document must not be used for any purpose which may breach any copyright

Regional opportunities

The Project will contribute to The Greater Bendigo Environment Strategy (2016–2021) by providing a “renewable, equitable energy network and harnessing the local solar power potential”.

The Project will support the transition of Victoria away from fossil fuel based power which is necessary to ensure obligations under the Paris Agreement are met. The transition away from fossil fuel based power is also necessary to maximise the socio-economic opportunities presented by this transition over the coming years and decades, and will include electrification of transport.

**ADVERTISED
PLAN**

4 CONTEXT

4.1 THE COMMUNITY

Axedale is the closest town to the site (about 7km to the south-west). It is located on the Mclvor Highway, in the City of Greater Bendigo, east of Bendigo. It was surveyed and proclaimed in 1861. At the 2016 census, Axedale had a population of 802.

The town is nestled alongside the Campaspe River which feeds out of Lake Eppalock. It has a golf course, tennis courts, a school, a pub and a convenience store/petrol station.

The town was the end point of the O Keefe Rail Trail from Bendigo along the former railway reservation. In 2015, work was completed on extending the rail trail from Axedale to Heathcote. As part of the Campaspe River crossing, an underpass for the Rail Trail was also built under the Mclvor Highway.

4.2 EXISTING SOLAR FARM IN THE AREA

There is a level of community awareness about major renewables projects in the area, with one previous proposal, Axedale Solar Farm, having been put forward in the direct vicinity of the Project site and approved in March 2020.

The UPC Axedale Solar Farm is an approved project that has not been constructed and this Plan has considered the Axedale Solar Farm when reflecting on approaches to community and stakeholders. One of the objectives being to prevent community engagement fatigue in catering for a targeted intervention.

4.3 THE LOCAL STRATEGIES

The Greater Bendigo Environment Strategy (2016–2021) aims at achieving outcomes that provide the local community with clean air, water and a healthy natural environment.

It is based on an internationally-recognised benchmarking format One Planet, which supports sustainable living. It is based on the following objectives:

- Zero carbon emissions
- Zero waste
- Improved shared or low-carbon transport options
- Increased use of sustainable building materials
- Supporting local and sustainable food production and community sharing
- Long term sustainable water security
- Thriving landscapes and ecosystems
- Diverse cultures and communities celebrating connection to nature and sustainable living
- Equitable and sustainable local economy
- Improved overall health and happiness of the community
- A renewable, equitable energy network – harness the local solar power potential

The proposal aligns with Greater Bendigo strategy by reducing Carbon emissions and harnessing the potential of locally generated power.

ADVERTISED PLAN

5 THE COMMUNICATION PROCESS

5.1 GUIDING PRINCIPLES

A considered and thorough communication and engagement process will be a critical element of the Project's success. This document summarises how the project team will communicate and engage with key stakeholders, continue to build brand identity for the project partner, establish trust, and develop effective communication tools and tactics to support the successful implementation of the Project.

Our communication and engagement activities will be underpinned by:

- The engagement levels defined by the 2004 International Association of Public Participation: informing, consulting, involving, collaborating and empowering.
Guiding principles of:
 - Move from informing to listening
 - Increasing level of trust in relationships
 - Decisions based on collective needs, not individual needs
 - People genuinely feel a part of the process and own the solution.
- The *Solar Energy Facilities Design and Development Guideline* (DELWP August 2019). This guideline was developed to provide the community, industry, applicants and regulators with general guidance on the planning framework for the assessment and determination of large-scale solar energy projects. Pages 19-21 of this document outlines best practice community engagement, with applicants encouraged to engage with relevant stakeholders early on in the development process.
- The *Community Engagement and Benefit Sharing in Renewable Energy Development; A guide for renewable energy developers* (DELWP 2017). This guide was developed to assess projects' community engagement and benefit sharing under the Victorian Renewable Energy Target auction, however it is also used by DELWP to communicate expectations for community engagement more generally.

5.2 OBJECTIVES

Business objectives: (what our business or organisation is aiming to achieve)

- Secure community and stakeholder support for the Project, including planning and environmental approvals as required.
- Successful construction and operation of the large-scale solar energy farm.
- Ongoing successful partnership between project partners including funders.
- Ongoing positive relationship with surrounding neighbours and key stakeholders such as City of Greater Bendigo.

Communication objectives

- Raise community and stakeholder awareness about the Project and its benefits and opportunities presented by the shift to a renewable energy future.
- Offer community members and stakeholders a genuine opportunity to discuss the Project and any potential issues and benefits of the Project and submit any concerns formally.
- Communication strategies align objectives of key stakeholders including:

This copied document to be made available for the sole purpose of enabling its consideration and review as part of a planning process under the Planning and Environment Act 1987. The document must not be used for any purpose which may breach any copyright

- The community consultation requirements of DELWP, City of Greater Bendigo and Campaspe Shire Council (the Project is adjacent to Campaspe Council's boundaries to the north)
- The requirements of the landholder/s
- The broader State and Federal Government energy policy and plan statements as relevant to the Project
- There is consistent, relevant and regular communication between partners – internal and external.
- Project participants and partners understand and support the Project.
- Project stakeholders and the public have access to the information they need to support development of a successful Project.
- Community and stakeholders are provided with adequate information.
- Support for the Project is maintained throughout the Project life cycle.
- The engagement is flexible and responsive to the outcomes throughout the engagement process.

5.3 MANAGEMENT OF COMMUNITY EXPECTATIONS

The key to effectively managing community expectations is genuine efforts to engage with communities in a timely manner, and consistency in messaging about the details of what the Project is, what impacts it will have and what it can and can't deliver for the community.

This will include:

- Using multiple engagement modes as defined in Section 5.5 below.
- Providing adequate notice of any engagement events and/or time to respond to engagement activities.
- Consistent and clear messaging as defined in Section 5.4 below.
- Responding to any enquires or concerns through agreed spokespeople and in a timely manner.
- Being clear about what the Project will and won't deliver.

5.4 KEY MESSAGES

The key messaging for the Project is as follows:

- The Project is funded by FRV Services Australia Pty Ltd who have offices in Sydney and have been developing in the Australian Market for 11 years.
- FRV was established in 2006 and has successfully delivered 1.6 GW projects globally including 13 solar farm projects across Australia (5 in operation).
- Genuine and ongoing consultation is a standard part of FRV approach to their project development.
- Long-term ownership model – FRV will own and operate Fosterville Solar Farm, oversee and control of all phases (development, construction and operations) of the project.
- The Project will operate on privately owned freehold land that will be leased for the duration of the Project.

- The technology installed at the solar farm is the world leading photovoltaic solar technology and energy produced by the solar farm will be exported into Bendigo to Shepparton 220kV line.
- The energy generated will be exported into the grid, 365 days a year.
- Solar energy generation is critical to the State's capacity to increase renewable energy generation and unlock the significant economic development and jobs associated with the future of energy.
- The solar farm will generate enough clean renewable electricity to power the equivalent of approximately 33,000 Victorian homes.
- Any electromagnetic emissions from the facility will be within national standards, as photovoltaic systems do not approach levels considered harmful to human health established by the International Commission on Non-Ionizing Radiation Protection.
- Any distant views to the Project from the surrounding area will just see the solar fields as a darker shaded area similar to when a paddock has been ploughed but a different colour.
- The maximum height of the solar fields will be approximately 5.5 metres above natural ground level.
- Glint and glare from the photovoltaic panels is minimal and are decisively lower than the reflectance generated by common reflective surfaces of built environments as they are designed to absorb, not reflect light.
- The site is largely cleared land, which has been used for productive purposes for an extended period of time, so minimal clearing of native vegetation is necessary.
- The site is not impacting irrigated agricultural land, and can still be successfully grazed with sheep in combination with operation of the solar farm, and can be returned to farming land at the end of the Project's life through a decommissioning process. There are a number of projects now exploring options for combining more intensive agricultural production with solar farm projects ([Agrisolar](#)) which may lead to further opportunities for sites such as this.
- Employment generated by the Project will include up to 150 jobs during the construction period and approximately 3 - 5 ongoing jobs during operations.

5.5 ENGAGEMENT TOOLS/STRATEGIES

The following engagement tools/strategies are proposed:

- One on one face to face meetings with neighbours, both at the site and at neighbours\neighbouring properties (as appropriate with Covid-19 restrictions)
- Face to face meetings/presentations (as appropriate with Covid-19 restrictions)
- Town Hall meetings/presentations (as appropriate with Covid-19 restrictions)
- Direct mail outs
- Adverts in local newspapers
- Websites www.fostervillesolarfarm.com.au and social media as appropriate
- Radio interviews as appropriate

This copied document to be made available for the sole purpose of enabling its consideration and review as part of a planning process under the Planning and Environment Act 1987. The document must not be used for any purpose which may breach any copyright

5.6 STAKEHOLDER AND AUDIENCE ANALYSIS

The key stakeholders and audiences for the Project and engagement approach/considerations are summarised below.

TABLE 1: STAKEHOLDERS AND ENGAGEMENT

Key Stakeholder	Management / Influence level	Involvement / Engagement Considerations
Adjoining land holders	Local	Early consultation with adjoining neighbours to brief them on the proposed Project and see if there have been any issues to date. Also brief them on the planning process and construction process and timelines. Two rounds: first abutting and adjoining neighbours, then residents within a 2km radius.
Local community (Residents and Business Community)	Local/regional	<p>Early and ongoing consultation with the community through information nights, public information stands, opportunities to contact the proponent and their representatives via notification in the local newspaper.</p> <p>A website presenting the Project and including a FAQ section is found at www.fostervillesolarfarm.com.au.</p> <p>Continue to work with local business to support the delivery of the Project using local supplies and labour where possible.</p>
<p>Progress / Planning / Community associations and groups</p> <p>E.g. Rotary, Lions and Apex, enviro and community development groups</p>	Local/regional	<p>Project team will provide presentations to local progress groups upon request.</p> <div style="border: 2px solid red; padding: 5px; text-align: center; color: red; font-weight: bold;"> <p>This copied document to be made available for the sole purpose of enabling its consideration and review as part of a planning process under the Planning and Environment Act 1987. The document must not be used for any purpose which may breach any copyright</p> </div>
City of Greater Bendigo and Campaspe Shire Council	Local government authority	Project team will work with Council about appropriate traffic management measures to ensure safety requirements are met during construction and operation, updating the traffic management plan as required.
Department of Transport/VicRoads	State government roads agencies	Project team will work with VicRoads about appropriate traffic management measures to ensure safety requirements are met during construction and operation, updating the traffic management plan as required.
Aboriginal Community Representatives	Local/regional	Consult with RAP representatives from the Taungurung Land and Waters Council and/or a suitably qualified aboriginal cultural heritage specialist to ensure the Project

Key Stakeholder	Management / Influence level	Involvement / Engagement Considerations
		is in accordance with the Guide to Investigating, Assessing and Reporting on Aboriginal Cultural Heritage.
Country Fire Authority	State emergency service provider	Liaise with authority on developing fire safety standards and protocols to be detailed in the Construction and Operational Management Plans for the Project, and ensure compliance with the CFA's Guidelines for Renewable Energy Installations.
North Central Catchment Management Authority	State water authority	Liaise with authority as appropriate regarding water and catchment management including any flooding issues.
Ausnet	State Distribution network service provider	Ausnet is a critical stakeholder in relation to connection to the power supply, in particular the implications of connecting distributed/embedded energy generation.
EnergySafe	Grid safety authority	Consult with grid safety authority as appropriate to ensure access points to site and crane usage near power lines is appropriately assessed and carried out.
WorkSafe/Work Cover Victoria	Review of Dangerous Goods	Consultation with this referral authority to ensure the proposed development complies with the relevant requirements of the Dangerous Goods Act and related legislation such as the Dangerous Goods (Storage and Handling) Regulations 2012.
Project Partners	Active management of process	Consistent internal communication between the Project partners is critical.
State government agencies	State Planning and Regional DEWLP	DELWP will be a key stakeholder in the assessment and regulation of the Project, and as a referral agency for the planning permit application, so communication and due diligence must be adhered to.
Bendigo Airport	Local aviation operator	Consultation as appropriate (as determined by aviation assessment) to ensure any potential aviation/glare impacts are addressed.

5.7 ACTION PLAN

Prior to developing this Plan, the proponents had already sought the support of the current landowners of the subject site, as confirmed by entering into an option to lease the land. In addition, initial contact has also been undertaken with surrounding landowners, DELWP, City of Greater Bendigo and Campaspe Shire Council.

ADVERTISED PLAN

TABLE 2: ACTION PLAN

Activity	Community / Stakeholder	Timing	Tools/Engagement Level	Responsibility
Stage 1 – Preparation of scoping report				
Preapplication notification to landholders	Adjoining landholders	Completed	Development Plans Project Flyer/info sheet/advertisement FAQ sheets 1:1 Conversations Website	FRV / Energy Forms
Briefings to government departments	Key Bendigo Councillors and Council Staff DELWP (Planning and Region/Environment branches) VicRoads CMA CFA EnergySafe	Underway/ongoing	Development Plans Presentation Progress summaries	FRV / Energy Forms
Briefings to relevant private organisations	Ausnet	Underway/ ongoing	Development Plans Presentation Progress summaries	FRV / Energy Forms
Stage 2 – Preparation of Planning Permit Application				
Notification to landholders and community	Neighbours to 2km Axedale / Fosterville local community Local businesses (gold mine, quarry, pub, accommodation)	Pre-application mailout to all dwellings within 2km completed Drop in days to be held in early 2022 ahead of formal notice from DELWP	Letters Notice in local paper and other media channels Development Plans Project Flyer/info sheet/advertisement FAQ sheets 1:1 conversations Information sessions/Drop in day	FRV / Energy Forms

This copied document to be made available for the sole purpose of enabling its consideration and review as part of a planning process under the Planning and Environment Act 1987. The document must not be used for any purpose which may breach any copyright

Fosterville Solar Farm - Community Engagement Plan

Follow up conversations	Landholders Interested parties	Underway/ongoing, as required depending on matters raised	As needed	FRV / Energy Forms
Upload project summary to websites	All parties with internet access	Website completed and online, updated as required including on lodgement of planning application	Plans and Project summary	FRV / Energy Forms
Stage 3 – Formal notice and response to submissions				
Formal notice as required under EP&A Act / Regulations and DELWP	As directed by DELWP	As part of planning process	Planning permit application information	FRV / Energy Forms / DELWP
Respond to formal submissions received as part of notice of planning permit application by DELWP	Submitters	As required depending on matters raised	Written responses / Submissions Report, as required 1:1 conversations, as required Meetings, as required Additional information	FRV / Energy Forms / DELWP
Update all key stakeholders	As relevant	As required depending on matters raised	Progress report and email	FRV / Energy Forms
Stage 4 - Post approval (as relevant)				
Media releases	All	As required	Media releases	FRV / Energy Forms
Ground break and Opening Ceremony	Relevant parties by invitation	'Ground breaking' of Project	Invitation to relevant parties	FRV / Energy Forms
Register of interest to supply Construction	Local service providers and businesses	Pre-Construction	Create a register of Local service providers and businesses, to provide to the EPC	FRV / Energy Forms
Construction	All	Construction	Updates as required	FRV / Energy Forms

This copied document to be made available for the sole purpose of enabling its consideration and review as part of a planning process under the Planning and Environment Act 1987. The document must not be used for any purpose which may breach any copyright

Formal opening of facility	All	Opening of facility	Updates as required	FRV / Energy Forms
----------------------------	-----	---------------------	---------------------	--------------------

This copied document to be made available for the sole purpose of enabling consideration and review as part of a planning process under the Planning and Environment Act 1987. The document must not be used for any purpose which may breach any copyright

5.8 COMMUNITY FEEDBACK OPPORTUNITIES AND REGISTRATION PROCEDURE

5.8.1 FEEDBACK OPPORTUNITIES

The following community feedback mediums will be provided:

- Project contact, phone and email address will be established and included on all engagement materials.
- Opportunity to provide feedback via the Project website: www.fostervillesolarfarm.com.au
- Social media will be monitored for comments and feedback and followed up as appropriate.
- In person at community information sessions, public information tables, and at formal Q&A sessions.

5.8.2 FEEDBACK REGISTER

Energy Forms will appoint a community engagement manager who will collate all community feedback into a shared register. The register will be used as follows:

- To manage all Project feedback including responding to concerns and ensuring these concerns have been adequately addressed.
- A live document that is updated throughout the Project and latest versions attached to reports.

5.8.3 SPOKESPEOPLE

General enquiries will be directed to FRV and/or Energy Forms via www.fostervillesolarfarm.com.au or contact details below. Spokespeople will include Energy Forms and FRV staff members.

Contact: fostervillesolarfarm@frv.com or 1300 718 455

5.8.4 MANAGEMENT OF COMMUNITY CONCERNS

Managing community engagement will be key to delivering a successful Project. The following actions are proposed with respect to any concerns raised:

- The concerns will be added to a shared community feedback register that is managed by Energy Forms.
- Initial contact with the concerned person or group is made within 24 hours of it being received.
- Concerned people or groups are only to be contacted by the agreed Project spokespeople.
- All the agreed spokespeople will be briefed on the concern prior to a response being made to the concerned person or group and a decision on the appropriate response will be agreed in writing (email acceptable).
- Comment will also be sought from City of Greater Bendigo or Campaspe Shire Council on the appropriate response to the concern.

- Project partners are all briefed on any relevant concerns regarding the Project and will provide timely responses to specific technical Project enquires relevant to their role in the Project.
- Any response will be reviewed and agreed by the Project spokespeople.
- A follow up with the concerned person or group is made within 24 hours of providing any formal response and again within 14 days of providing the response.
- Any media enquiries are to be direct to and only handled by the agreed Project spokespeople.

5.9 MONITORING AND EVALUATION

5.9.1 ENGAGEMENT INDICATORS

The success of the engagement plan will be determined by the following indicators:

- All immediate adjoining landholders contacted directly prior to submission of the planning permit application.
- All public enquiries responded to within 24 hours.
- No concerns raised by key stakeholders regarding level or details of briefings provided.
- Messaging is consistent and accurate throughout the Project.
- Direct and indirect Project benefits are communicated clearly and consistently.
- Stakeholder engagement reporting is timely and comprehensive.

5.9.2 REPORTING

FRV or their representatives will undertake a bimonthly internal verbal report on the outcomes of implementing the Community Engagement Plan. This report shall include but not be limited to the following:

- Formal engagement activities undertaken.
- Details of target audience.
- Known numbers of persons or groups engaged.
- Informal and formal responses to the engagement.
- Any concerns or issues arising out of the engagement.
- Response to these concerns.
- Short evaluation of the efficacy of the plan.
- Any recommended changes to the engagement.
- Next steps.

This copied document to be made available for the sole purpose of enabling its consideration and review as part of a planning process under the Planning and Environment Act 1987. The document must not be used for any purpose which may breach any copyright

**ADVERTISED
PLAN**

5.9.3 REVIEW OF COMMUNITY ENGAGEMENT PLAN

A review of the community engagement plan will be provided in the following instances:

TABLE 3: REVIEW SCHEDULE OF COMMUNITY ENGAGEMENT PLAN

Review	Description
Quarterly evaluation of the effectiveness of the plan	This will involve some short commentary on the observed outcomes of the engagement to date and alignment with the engagement objectives.
Upon receipt of any formal written concerns	This will involve a review of the plan to ensure no changes to the engagement approach has not played a role in the raised concerns and modified where this is agreed to be the case by the Project spokespeople.
Outcomes report 1	An engagement outcomes report will be drafted following completion of all formal engagement activities completed prior to commencement of construction and signed off by the Project spokespeople prior to the ground-breaking ceremony. The outcomes report should reflect the contents of the regular reporting. The report will be shared with DELWP.
Outcomes report 2	An engagement outcomes report will be drafted following completion of all construction activities and the report and signed off by the Project spokespeople prior to the formal opening ceremony. The outcomes report should reflect the contents of the regular reporting. The report will be shared with DELWP.

This copied document to be made available for the sole purpose of enabling its consideration and review as part of a planning process under the Planning and Environment Act 1987. The document must not be used for any purpose which may breach any copyright

ADVERTISED PLAN