

This report provides information to support an application to remove, destroy or lop native vegetation in accordance with the *Guidelines for the removal, destruction or lopping of native vegetation*. The report **is not an assessment by DELWP** of the proposed native vegetation removal. Native vegetation information and offset requirements have been determined using spatial data provided by the applicant or their consultant.

Date of issue: 19/06/2020

Report ID: ECL_2020_015

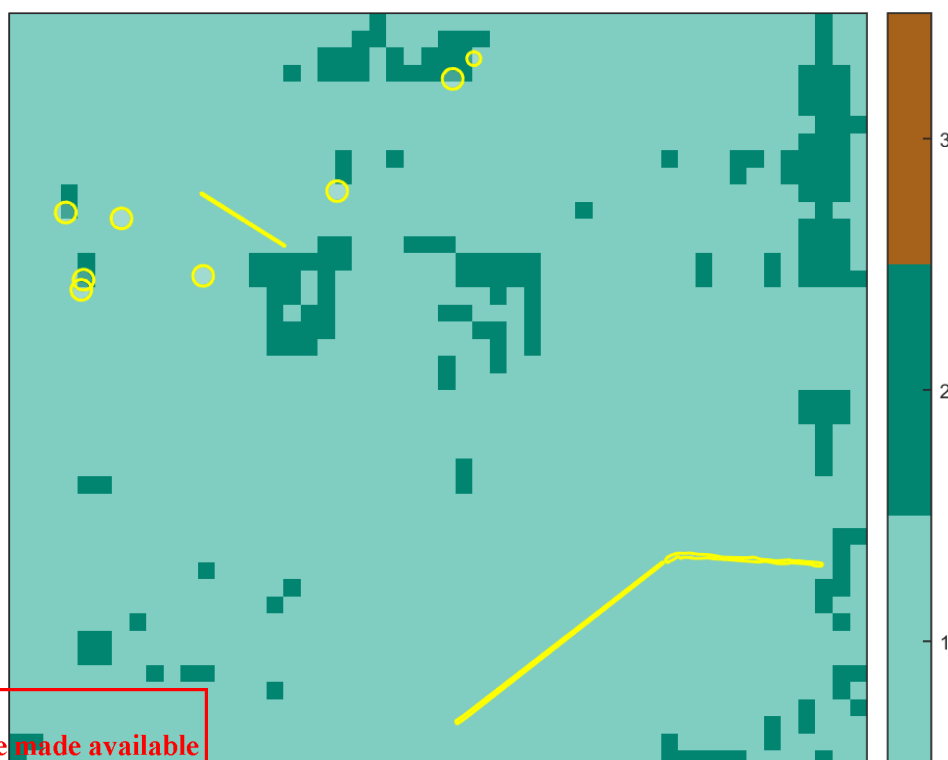
Time of issue: 11:05 am

Project ID	1611a_Viewbank_SF
------------	-------------------

Assessment pathway

Assessment pathway	Detailed Assessment Pathway
Extent including past and proposed	0.769 ha
Extent of past removal	0.000 ha
Extent of proposed removal	0.769 ha
No. Large trees proposed to be removed	7
Location category of proposed removal	Location 2 The native vegetation is in an area mapped as an endangered Ecological Vegetation Class (as per the statewide EVC map). Removal of less than 0.5 hectares of native vegetation in this location will not have a significant impact on any habitat for a rare or threatened species.

1. Location map



This copied document to be made available for the sole purpose of enabling its consideration and review as part of a planning process under the Planning and Environment Act 1987. The document must not be used for any purpose which may breach any copyright

ADVERTISED PLAN



Environment, Land, Water and Planning

Offset requirements if a permit is granted

Any approval granted will include a condition to obtain an offset that meets the following requirements:

General offset amount¹	0.114 general habitat units
Vicinity	Goulburn Broken Catchment Management Authority (CMA) or Greater Shepparton City Council
Minimum strategic biodiversity value score ²	0.132
Large trees	7 large trees

NB: values within tables in this document may not add to the totals shown above due to rounding

Appendix 1 includes information about the native vegetation to be removed

Appendix 2 includes information about the rare or threatened species mapped at the site.

Appendix 3 includes maps showing native vegetation to be removed and extracts of relevant species habitat importance maps

¹ The general offset amount required is the sum of all general habitat units in Appendix 1.

² Minimum strategic biodiversity score is 80 per cent of the weighted average score across habitat zones where a general offset is required

Next steps

Any proposal to remove native vegetation must meet the application requirements of the Detailed Assessment Pathway and it will be assessed under the Detailed Assessment Pathway.

If you wish to remove the mapped native vegetation you are required to apply for a permit from your local council. Council will refer your application to DELWP for assessment, as required. **This report is not a referral assessment by DELWP.**

This *Native vegetation removal report* must be submitted with your application for a permit to remove, destroy or lop native vegetation.

Refer to the *Guidelines for the removal, destruction or lopping of native vegetation* (the Guidelines) for a full list of application requirements. This report provides information that meets the following application requirements:

- The assessment pathway and reason for the assessment pathway
- A description of the native vegetation to be removed (partly met)
- Maps showing the native vegetation and property (partly met)
- Information about the impacts on rare or threatened species.
- The offset requirements determined in accordance with section 5 of the Guidelines that apply if approval is granted to remove native vegetation.

Additional application requirements must be met including:

- Topographical and land information
- Recent dated photographs
- Details of past native vegetation removal
- An avoid and minimise statement
- A copy of any Property Vegetation Plan that applies
- A defensible space statement as applicable
- A statement about the Native Vegetation Precinct Plan as applicable
- A site assessment report including a habitat hectare assessment of any patches of native vegetation and details of trees
- An offset statement that explains that an offset has been identified and how it will be secured.

© The State of Victoria Department of Environment, Land, Water and Planning Melbourne 2020

This work is licensed under a Creative Commons Attribution 4.0 International licence. You are free to re-use the work under that licence, on the condition that you credit the State of Victoria as author. The licence does not apply to any images, photographs or branding, including the Victorian Coat of Arms, the Victorian Government logo and the Department of Environment, Land, Water and Planning logo. To view a copy of this licence, visit <http://creativecommons.org/licenses/by/3.0/au/deed.en>

Authorised by the Victorian Government, 8 Nicholson Street, East Melbourne.

For more information contact the DELWP Customer Service Centre 136 186

www.delwp.vic.gov.au

Disclaimer

This publication may be of assistance to you but the State of Victoria and its employees do not guarantee that the publication is without flaw of any kind or is wholly appropriate for your particular purposes and therefore disclaims all liability for any error, loss or other consequence which may arise from you relying on any information in this publication.

Obtaining this publication does not guarantee that an application will meet the requirements of Clauses 52.16 or 52.17 of the Victoria Planning Provisions and Victorian planning schemes or that a permit to remove native vegetation will be granted.

Notwithstanding anything else contained in this publication, you must ensure that you comply with all relevant laws, legislation, awards or orders and that you obtain and comply with all permits, approvals and the like that affect, are applicable or are necessary to undertake any action to remove, lop or destroy or otherwise deal with any native vegetation or that apply to matters within the scope of Clauses 52.16 or 52.17 of the Victoria Planning Provisions and Victorian planning schemes.

Appendix 1: Description of native vegetation to be removed

The species-general offset test was applied to your proposal. This test determines if the proposed removal of native vegetation has a proportional impact on any rare or threatened species habitats above the species offset threshold. The threshold is set at 0.005 per cent of the mapped habitat value for a species. When the proportional impact is above the species offset threshold a species offset is required. This test is done for all species mapped at the site. Multiple species offsets will be required if the species offset threshold is exceeded for multiple species.

Where a zone requires species offset(s), the species habitat units for each species in that zone is calculated by the following equation in accordance with the Guidelines:

$$\text{Species habitat units} = \text{extent} \times \text{condition} \times \text{species landscape factor} \times 2, \text{ where the species landscape factor} = 0.5 + (\text{habitat importance score}/2)$$

The species offset amount(s) required is the sum of all species habitat units per zone

Where a zone does not require a species offset, the general habitat units in that zone is calculated by the following equation in accordance with the Guidelines:

$$\text{General habitat units} = \text{extent} \times \text{condition} \times \text{general landscape factor} \times 1.5, \text{ where the general landscape factor} = 0.5 + (\text{strategic biodiversity value score}/2)$$

The general offset amount required is the sum of all general habitat units per zone.

Native vegetation to be removed

Information provided by or on behalf of the applicant in a GIS file							Information calculated by EnSym					
Zone	Type	BioEVC	BioEVC conservation status	Large tree(s)	Partial removal	Condition score	Polygon Extent	Extent without overlap	SBV score	HI score	Habitat units	Offset type
0-A	Scattered Tree	vriv0175_61	Endangered	0	no	0.200	0.031	0.031	0.280		0.006	General
0-H	Scattered Tree	vriv0175_61	Endangered	1	no	0.200	0.070	0.057	0.100		0.009	General
0-G	Scattered Tree	vriv0175_61	Endangered	1	no	0.200	0.070	0.057	0.100		0.009	General
0-F	Scattered Tree	vriv0175_61	Endangered	1	no	0.200	0.070	0.070	0.110		0.012	General
0-E	Scattered Tree	vriv0175_61	Endangered	1	no	0.200	0.070	0.070	0.110		0.012	General
0-D	Scattered Tree	vriv0175_61	Endangered	1	no	0.200	0.070	0.070	0.145		0.012	General
0-C	Scattered Tree	vriv0175_61	Endangered	1	no	0.200	0.070	0.070	0.170		0.012	General
0-B	Scattered Tree	vriv0175_61	Endangered	1	no	0.200	0.070	0.070	0.590		0.017	General

Information provided by or on behalf of the applicant in a GIS file							Information calculated by EnSym					
Zone	Type	BioEVC	BioEVC conservation status	Large tree(s)	Partial removal	Condition score	Polygon Extent	Extent without overlap	SBV score	HI score	Habitat units	Offset type
0-I	Patch	vriv0125	Endangered	0	no	0.110	0.027	0.027	0.120		0.003	General
0-J	Patch	vriv0125	Endangered	0	no	0.110	0.106	0.106	0.100		0.010	General
0-K	Patch	vriv0125	Endangered	0	no	0.110	0.140	0.140	0.101		0.013	General

Appendix 2: Information about impacts to rare or threatened species' habitats on site

This table lists all rare or threatened species' habitats mapped at the site.

Species common name	Species scientific name	Species number	Conservation status	Group	Habitat impacted	% habitat value affected
Yarran Wattle	<i>Acacia omalophylla</i>	500069	Endangered	Dispersed	Habitat importance map	0.0000
Silky Umbrella-grass	<i>Digitaria ammophila</i>	501041	Vulnerable	Dispersed	Habitat importance map	0.0000
Stiff Groundsel	<i>Senecio behrianus</i>	503101	Endangered	Dispersed	Habitat importance map	0.0000
Jericho Wire-grass	<i>Aristida jerichoensis</i> var. <i>subspinulifera</i>	504631	Endangered	Dispersed	Habitat importance map	0.0000
Pale Flax-lily	<i>Dianella</i> sp. aff. <i>longifolia</i> (Riverina)	507399	Vulnerable	Dispersed	Habitat importance map	0.0000
Pepper Grass	<i>Panicum laevinode</i>	504808	Vulnerable	Dispersed	Habitat importance map	0.0000
Bent-leaf Wattle	<i>Acacia flexifolia</i>	500035	Rare	Dispersed	Habitat importance map	0.0000
Yellow-tongue Daisy	<i>Brachyscome chrysoglossa</i>	503654	Vulnerable	Dispersed	Habitat importance map	0.0000
Small Scurf-pea	<i>Cullen parvum</i>	502773	Endangered	Dispersed	Habitat importance map	0.0000
Veiled Fringe-sedge	<i>Fimbristylis velata</i>	501369	Rare	Dispersed	Habitat importance map	0.0000
Umbrella Grass	<i>Digitaria divaricatissima</i> var. <i>divaricatissima</i>	501045	Vulnerable	Dispersed	Habitat importance map	0.0000
Broom Bitter-pea	<i>Daviesia genistifolia</i> s.s.	503813	Rare	Dispersed	Habitat importance map	0.0000
Kamarooka Mallee	<i>Eucalyptus froggattii</i>	501279	Rare	Dispersed	Habitat importance map	0.0000
Smooth Minuria	<i>Minuria integerrima</i>	502201	Rare	Dispersed	Habitat importance map	0.0000
Long Eryngium	<i>Eryngium paludosum</i>	501238	Vulnerable	Dispersed	Habitat importance map	0.0000
Dark Wire-grass	<i>Aristida calycina</i> var. <i>calycina</i>	503630	Rare	Dispersed	Habitat importance map	0.0000
Southern Swainson-pea	<i>Swainsona behriana</i>	504944	Rare	Dispersed	Habitat importance map	0.0000
Silky Swainson-pea	<i>Swainsona sericea</i>	504946	Vulnerable	Dispersed	Habitat importance map	0.0000
Late-flower Flax-lily	<i>Dianella tarda</i>	505085	Vulnerable	Dispersed	Habitat importance map	0.0000

Branching Groundsel	<i>Senecio cunninghamii</i> var. <i>cunninghamii</i>	503104	Rare	Dispersed	Habitat importance map	0.0000
Riverina Bitter-cress	<i>Cardamine moirensis</i>	505032	Rare	Dispersed	Habitat importance map	0.0000
Slender Club-sedge	<i>Isolepis congrua</i>	501773	Vulnerable	Dispersed	Habitat importance map	0.0000
Fuzzy New Holland Daisy	<i>Vittadinia cuneata</i> var. <i>morrisii</i>	505060	Rare	Dispersed	Habitat importance map	0.0000
Yellow Burr-daisy	<i>Calotis lappulacea</i>	500598	Rare	Dispersed	Habitat importance map	0.0000
Dookie Daisy	<i>Brachyscome gracilis</i>	505494	Vulnerable	Dispersed	Habitat importance map	0.0000
Dwarf Brooklime	<i>Gratiola pumilo</i>	503753	Rare	Dispersed	Habitat importance map	0.0000
Waterbush	<i>Myoporum montanum</i>	502240	Rare	Dispersed	Habitat importance map	0.0000
Hairy Tails	<i>Ptilotus erubescens</i>	502825	Vulnerable	Dispersed	Habitat importance map	0.0000
Dwarf Bitter-cress	<i>Rorippa eustylis</i>	502944	Rare	Dispersed	Habitat importance map	0.0000
Floodplain Fireweed	<i>Senecio campylocarpus</i>	507136	Rare	Dispersed	Habitat importance map	0.0000
Lanky Buttons	<i>Leptorhynchus elongatus</i>	501941	Endangered	Dispersed	Habitat importance map	0.0000
Buloke Mistletoe	<i>Amyema linophylla</i> subsp. <i>orientalis</i>	500217	Vulnerable	Dispersed	Habitat importance map	0.0000
Buloke	<i>Allocasuarina luehmannii</i>	500678	Endangered	Dispersed	Habitat importance map	0.0000
Superb Parrot	<i>Polytelis swainsonii</i>	10277	Endangered	Dispersed	Habitat importance map	0.0000
Purple Diuris	<i>Diuris punctata</i>	501084	Vulnerable	Dispersed	Habitat importance map	0.0000
Ausfeld's Wattle	<i>Acacia ausfeldii</i>	500013	Vulnerable	Dispersed	Habitat importance map	0.0000
Rosemary Grevillea	<i>Grevillea rosmarinifolia</i> subsp. <i>rosmarinifolia</i>	504066	Rare	Dispersed	Habitat importance map	0.0000
Pale Swamp Everlasting	<i>Coronidium gunnianum</i>	504655	Vulnerable	Dispersed	Habitat importance map	0.0000
Delicate Crane's-bill	<i>Geranium</i> sp. 6	505347	Vulnerable	Dispersed	Habitat importance map	0.0000
Bush Stone-curlew	<i>Burhinus grallarius</i>	10174	Endangered	Dispersed	Habitat importance map	0.0000
Brolga	<i>Grus rubicunda</i>	10177	Vulnerable	Dispersed	Habitat importance map	0.0000
Grey-crowned Babbler	<i>Pomatostomus temporalis</i> <i>temporalis</i>	10443	Endangered	Dispersed	Habitat importance map	0.0000

Rye Beetle-grass	<i>Tripogon loliiformis</i>	503455	Rare	Dispersed	Habitat importance map	0.0000
Bearded Dragon	<i>Pogona barbata</i>	12177	Vulnerable	Dispersed	Habitat importance map	0.0000
Black Falcon	<i>Falco subniger</i>	10238	Vulnerable	Dispersed	Habitat importance map	0.0000

Habitat group

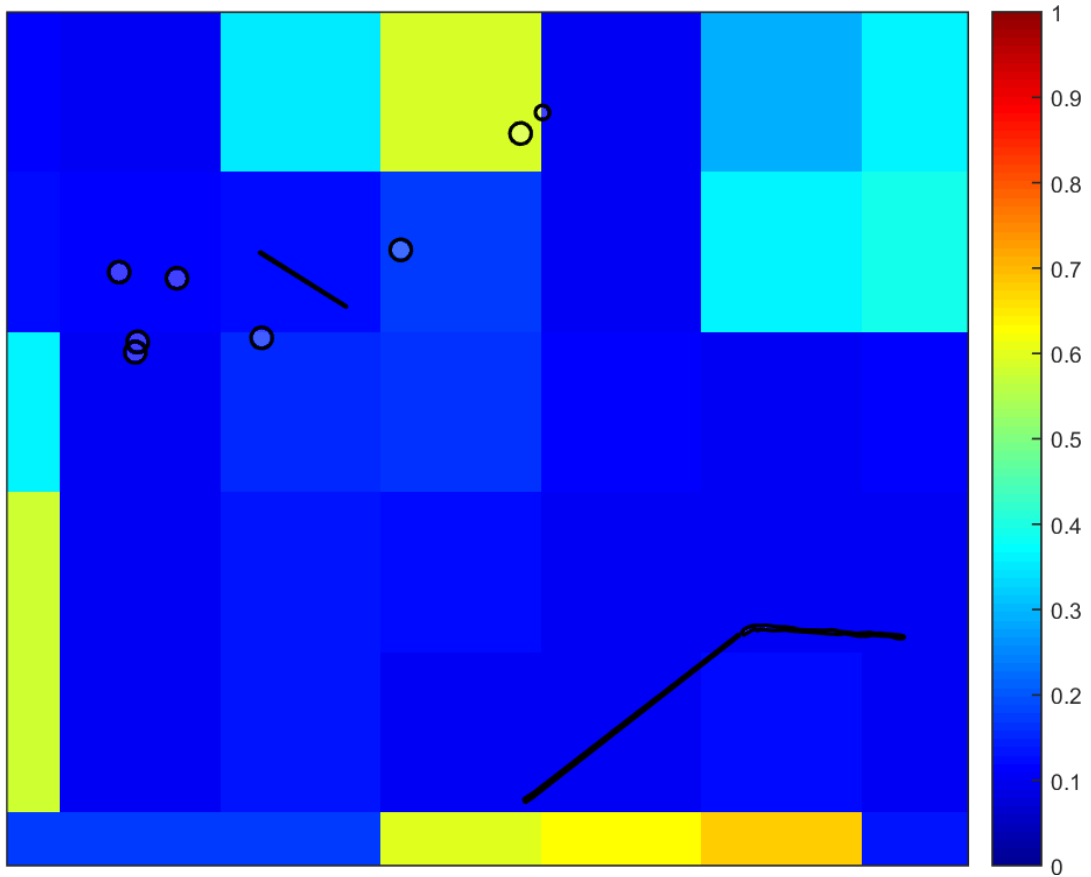
- Highly localised habitat means there is 2000 hectares or less mapped habitat for the species
- Dispersed habitat means there is more than 2000 hectares of mapped habitat for the species

Habitat impacted

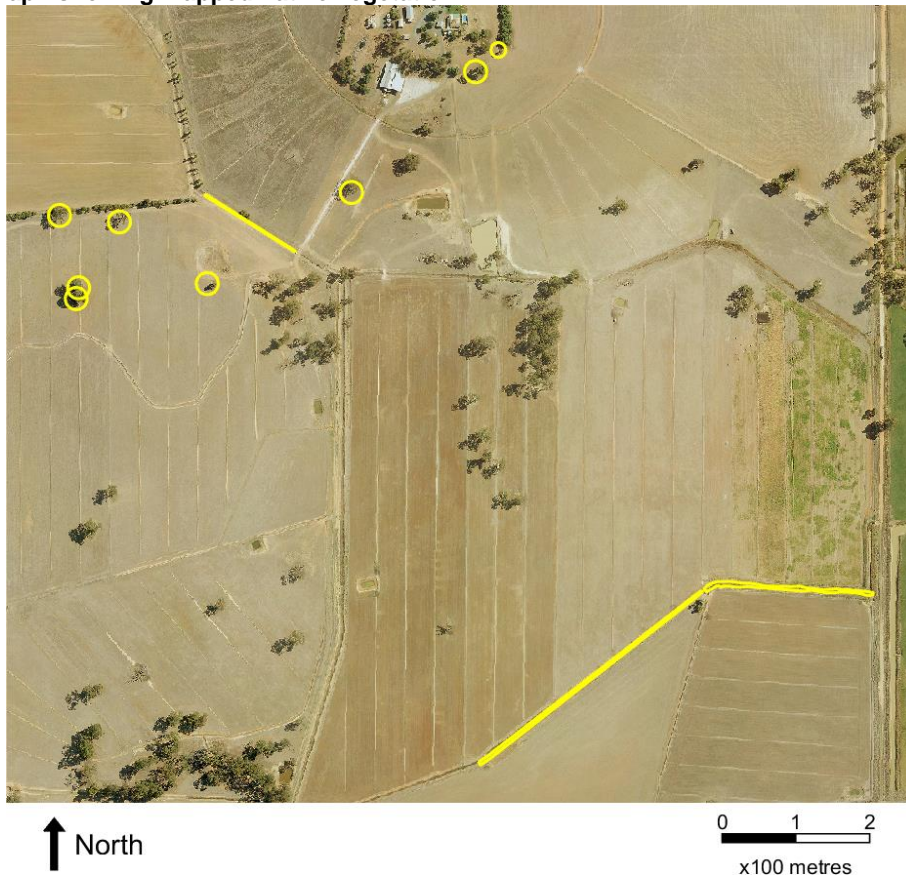
- Habitat importance maps are the maps defined in the Guidelines that include all the mapped habitat for a rare or threatened species
- Top ranking maps are the maps defined in the Guidelines that depict the important areas of a dispersed species habitat, developed from the highest habitat importance scores in dispersed species habitat maps and selected VBA records
- Selected VBA record is an area in Victoria that represents a large population, roosting or breeding site etc.

Appendix 3 – Images of mapped native vegetation

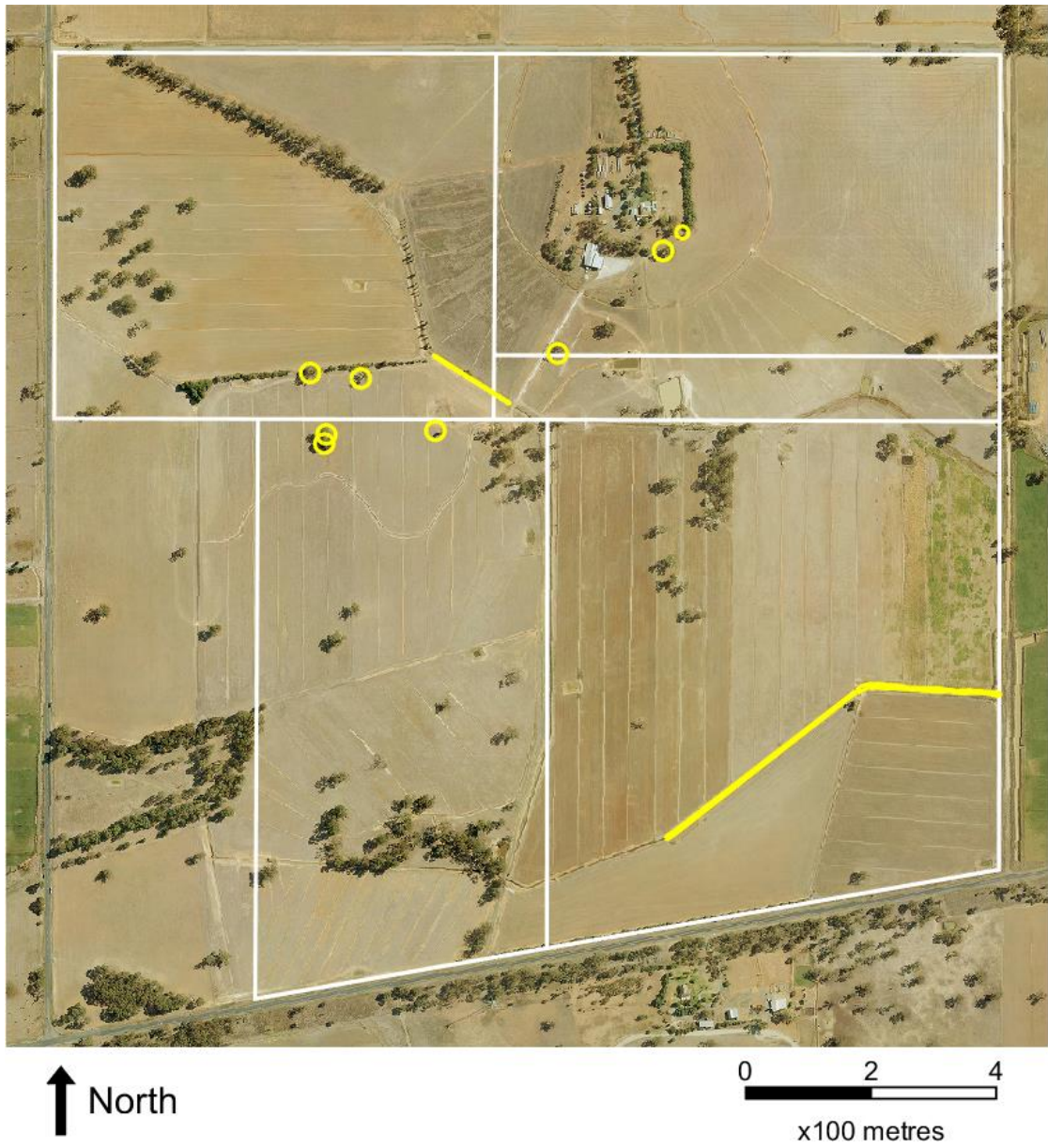
2. Strategic biodiversity values map



3. Aerial photograph showing mapped native vegetation



4. Map of the property in context



Yellow boundaries denote areas of proposed native vegetation removal.