

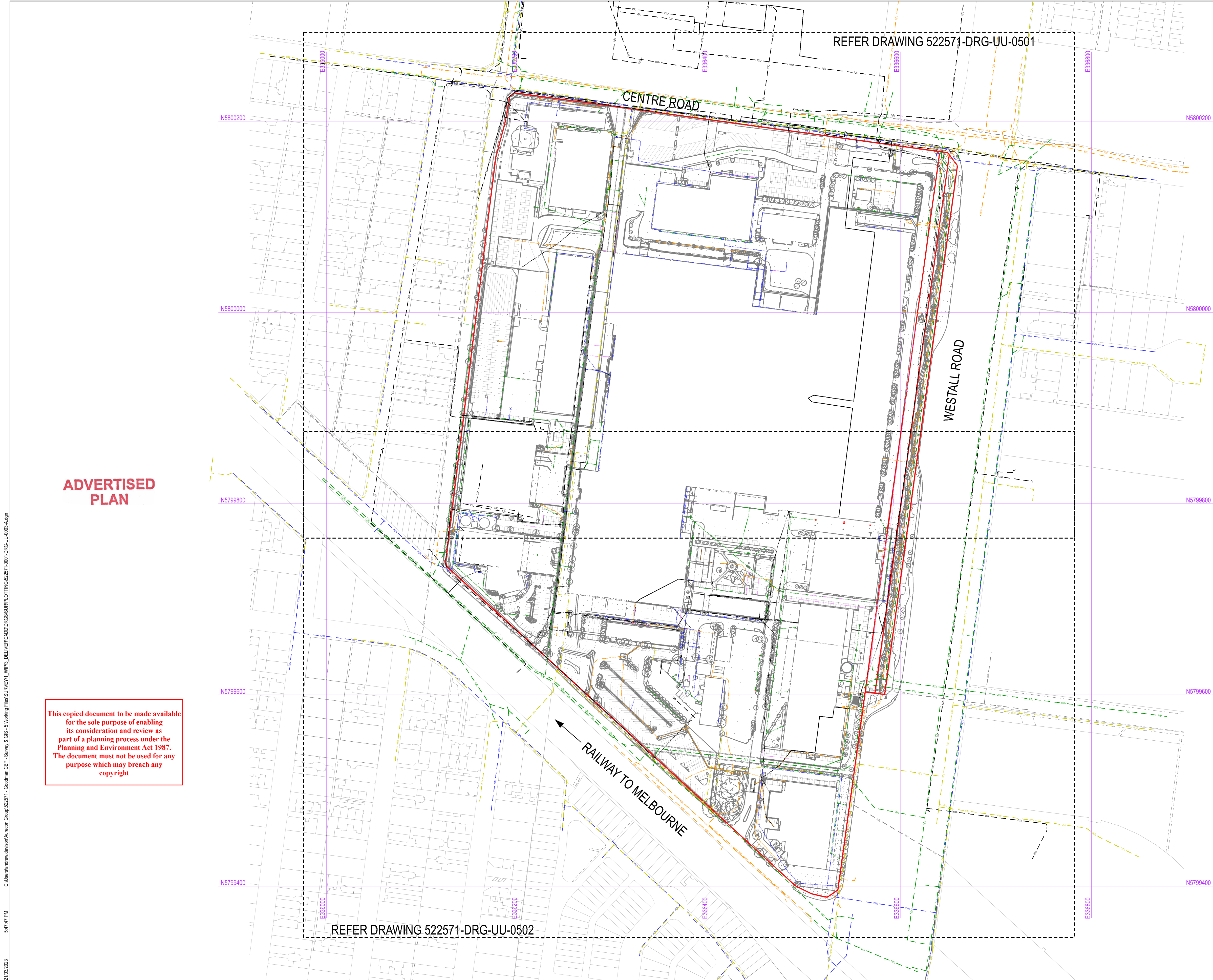


CONTROL TABLE (MGA2020/AHD)				
Reference	East	North	Elevation	Description
1	336142.075	5799887.055	51.825	Rivet in Path
2	336162.570	5800051.725	54.540	Rivet in Path
3	336120.910	5799715.455	51.280	Rivet in Kerb
4	336234.010	5799634.380	51.000	Rivet in Path
5	336314.015	5800213.610	56.770	Rivet in Path
6	336407.635	5799455.140	51.185	Rivet in Kerb
8	336590.525	5799592.925	51.975	Star Picket
9	336176.115	5800161.230	56.345	Rivet in Path
10	336192.795	5800230.070	56.880	Rivet in Path
11	336668.970	5799592.530	50.840	Rivet in D/Hole Fnd
12	336629.465	5799850.420	53.050	Rivet in Traffic Island
13	336657.385	5800063.870	54.085	Spike
14	336669.690	5800164.045	55.215	Rivet in Traffic Island
15	336740.545	5800112.870	54.050	Rivet in Elch FND
16	336530.140	5800163.950	55.160	Rivet in Conc
17	336423.660	5800198.790	55.670	Rivet in Conc
18	336702.985	5799839.980	51.800	Rivet in Elch FND
19	336239.130	5799700.640	51.150	RIVET
20	336260.815	5799879.695	51.740	RIVET
21	336302.305	5800096.100	55.340	RIVET RL?
22	336213.610	5800074.115	55.380	RIVET
23	336434.115	5800165.735	55.380	RIVET
24	336522.125	5800156.290	54.590	RIVET
25	336631.630	5800139.320	54.750	RIVET
26	336584.830	5799771.830	51.555	RIVET
27	336472.725	5799782.560	51.050	RIVET
28	336476.925	5799712.845	51.010	RIVET
29	336555.865	5799617.945	51.170	RIVET
30	336457.130	5799664.040	50.920	RIVET
31	336374.030	5799673.680	51.145	RIVET
32	336441.695	5799550.590	51.080	RIVET
33	336547.770	5799513.425	52.070	RIVET
34	336532.600	5799407.970	52.130	RIVET
35	336383.430	5799608.640	51.090	GIN
36	336298.120	5799644.640	51.140	GIN
37	336353.385	5799559.080	50.860	GIN
38	336254.125	5799758.390	51.535	PIN IN PIT
39	336251.195	5799794.315	51.475	GIN
40	336258.195	5799849.760	51.640	GIDH
41	336193.600	5799899.365	52.305	PIN
42	336203.805	5800008.300	53.675	GIN
43	336204.150	5800045.735	54.745	GIDH
45	336186.910	5800137.825	56.760	PIN
46	336312.865	5800150.805	55.905	SPIKE
47	336372.905	5800153.125	55.605	PIN
48	336581.735	5800114.030	54.280	PIN
50	336629.485	5800086.200	51.540	PIN
51	336617.945	5800013.240	51.325	PIN
52	336600.840	5799877.605	51.395	PIN
53	336385.480	5799787.005	51.135	PIN
54	336384.890	5799718.510	51.345	PIN
DRC2026	336027.225	5799800.935	52.125	BM (MGA94 TO MGA2020 ADOPT)
PM262	336197.800	5800262.940	57.155	PM262 (MGA94 TO MGA2020 ADOPT)
PM670	336650.375	5799543.390	51.050	PSM (MGA94 TO MGA2020 ADOPT)

C:\Users\andrew.davison\OneDrive\Documents\Projects\522571-Working Files\Survey\1\WP\1\DELIVERABLES\DRG\522571-DRG-UU-001-C.dgn 4:16:05 PM 21/03/2023

CLIENT		NOTATIONS		REV	DATE	REVISION DETAILS		APPROVED	SCALE		SIZE	FOR INFORMATION NOT FOR CONSTRUCTION		PROJECT	GOODMAN CLAYTON BUSINESS PARK CENTRE ROAD, CLAYTON						
		DATE OF SURVEY AUGUST & SEPTEMBER 2011		A	13/09/22	TRANSLATION OF SURVEY TO MGA2020		MB	1:2000		A1	<div>APPROVED</div> <div>DATE</div>			TOPOGRAPHIC SURVEY - INDEX PLAN 2022 CURRENCY REVIEW						
		DATE OF SURVEY CURRENCY REVIEW SEPTEMBER 2022		B	13/09/22	CURRENCY DETAIL REVIEW		MB	DRAWN KI												
		DATE OF SURVEY UTILITY INVESTIGATION JANUARY - MARCH 2023		C	21/03/23	UPDATED FEATURES 2023		MB	SURVEYED MT												
		CO-ORDS ARE MGA2020 ZONE 55 VIDE PM262 & PM670							CHECKED												
		REDUCED LEVELS ARE TO AHD VIDE PM262 & PM670, WITH RL 57.153 & 51.050 QUOTED IN 2011.							DW												
		GRID INTERVAL 200m																			
		CONTOUR INTERVAL 0.2m																			





MGA 2020  
ZONE 55

NOTE  
THE CO-ORDINATES ARE  
MAP GRID AUSTRALIA  
(MGA 2020) ZONE 55

LEVELS MAY EXIST THAT HAVE BEEN  
TURNED OFF FOR PLOTTING CLARITY

CONTROL TABLE (MGA2020/AHD)				
Reference	East	North	Elevation	Description
1	336142.075	5799887.055	51.825	Rivet in Path
2	336162.570	5800051.725	54.540	Rivet in Path
3	336120.910	5799715.455	51.280	Rivet in Kerb
4	336234.010	5799634.380	51.000	Rivet in Path
5	336314.015	5800213.610	56.770	Rivet in Path
6	336407.635	5799455.140	51.185	Rivet in Kerb
8	336590.525	5799592.925	51.975	Star Picket
9	336176.115	5800161.230	56.345	Rivet in Path
10	336192.795	5800230.070	56.880	Rivet in Path
11	336668.970	5799592.530	50.840	Rivet in D/Hole Fnd
12	336629.465	5799850.420	53.050	Rivet in Traffic Island
13	336657.385	5800063.870	54.085	Spike
14	336669.690	5800164.045	55.215	Rivet in Traffic Island
15	336740.545	5800112.870	54.050	Rivet in Elch FND
16	336530.140	5800163.950	55.160	Rivet in Conc
17	336423.660	5800198.790	55.670	Rivet in Conc
18	336702.985	5799839.980	51.800	Rivet in Elch FND
19	336239.130	5799700.640	51.150	RIVET
20	336260.815	5799879.695	51.740	RIVET
21	336302.305	5800096.100	55.340	RIVET RL?
22	336213.610	5800074.115	55.380	RIVET
23	336434.115	5800165.735	55.380	RIVET
24	336522.125	5800156.200	54.590	RIVET
25	336631.630	5800139.320	54.750	RIVET
26	336584.830	5799771.830	51.555	RIVET
27	336472.725	5799782.560	51.050	RIVET
28	336476.925	5799712.845	51.010	RIVET
29	336555.865	5799617.945	51.170	RIVET
30	336457.130	5799664.040	50.920	RIVET
31	336374.030	5799673.680	51.145	RIVET
32	336441.695	5799550.590	51.080	RIVET
33	336547.770	5799513.425	52.070	RIVET
34	336532.600	5799407.970	52.130	RIVET
35	336383.430	5799608.640	51.090	GIN
36	336298.120	5799644.640	51.140	GIN
37	336353.385	5799559.080	50.860	GIN
38	336254.125	5799758.390	51.535	PIN IN PIT
39	336251.195	5799794.315	51.475	GIN
40	336258.195	5799849.760	51.640	GIDH
41	336193.600	5799899.365	52.305	PIN
42	336203.805	5800008.300	53.675	GIN
43	336204.150	5800045.735	54.745	GIDH
45	336186.910	5800137.825	56.760	PIN
46	336312.865	5800150.805	55.905	SPIKE
47	336372.905	5800153.125	55.605	PIN
48	336581.735	5800114.030	54.280	PIN
50	336629.485	5800086.200	51.540	PIN
51	336617.945	5800013.240	51.325	PIN
52	336600.840	5799877.605	51.395	PIN
53	336385.480	5799787.005	51.135	PIN
54	336384.890	5799718.510	51.345	PIN
DRC2026	336027.225	5799800.935	52.125	BM (MGA94 TO MGA2020 ADOPT)
PM262	336197.800	5800262.940	57.155	PM262 (MGA94 TO MGA2020 ADOPT)
PM670	336650.375	5799543.390	51.050	PSM (MGA94 TO MGA2020 ADOPT)

WARNING

LIMITED SITE VERIFICATIONS TO AS5488/2013 .  
NO GUARENTEE IS GIVEN THAT ALL EXISTING  
SERVICES THAT MAY EXIST ARE SHOWN.

WHERE UTILITY LOCATIONS ARE CLOSE TO DESIGN  
FURTHER QL-A VERIFICATIONS ARE RECOMMENDED  
SCAN INDUCTION (QL-B) AND INDIRECT INDUCTION (QL-C)  
LEVELS (Dx.x) ARE TO APPROX. TRACED CENTRE OF ASSET.  
GPR OBSERVATIONS (QL-D TO QL-C) LEVELS (Cx.x)  
ARE TO APPROX. TOP OF SUB-SURFACE ANOMALY.

ADVERTISED  
PLAN

This copied document to be made available  
for the sole purpose of enabling  
its consideration and review as  
part of a planning process under the  
Planning and Environment Act 1987.  
The document must not be used for any  
purpose which may breach any  
copyright

CLIENT

NOTATIONS

DATE OF SURVEY AUGUST & SEPTEMBER 2011  
DATE OF SURVEY CURRENCY REVIEW SEPTEMBER 2022  
DATE OF SURVEY UTILITY INVESTIGATION JANUARY- MARCH 2023  
CO-ORDS ARE MGA2020 ZONE 55 VIDE PM262 & PM670  
REDUCED LEVELS ARE TO AHD VIDE PM262 & PM670,  
WITH RL 57.153 & 51.050 QUOTED IN 2011.  
GRID INTERVAL 200m  
CONTOUR INTERVAL 0.2m

REV

DATE

REVISION DETAILS

APPROVED

SCALE

SIZE

FOR INFORMATION  
NOT FOR CONSTRUCTION

PROJECT

GOODMAN CLAYTON BUSINESS PARK  
CENTRE ROAD, CLAYTON

TITLE

PHYSICAL SERVICES SURVEY - INDEX PLAN  
2023 CURRENCY REVIEW

DRAWING No.

PROJECT No.

WBS

TYPE

DISC

NUMBER

REV

1:2000

A1

DATE

APPROVED

DRAWN

KI

SURVEYED

AD

CHECKED

DW

MB

21/03/23 SITE UTILITIES & DESKTOP INVESTIGATION

522571 - 0001 - DRG - UU - 0003 - A



LEGEND

Permanent Mark	Top of Bank (Batter)
Instrument Station	Toe of Bank
Survey Mark	Vegetation
Spot Height	Garden
Test Bore	Open Drain
Tree	Drain-U/G
Sprinkler Head	Bitumen CL
Drain-RCP	Edge of Bitumen
Box Culvert	Kerb-Back
Drain-UG	Kerb-Top
Side Entry Pit	Kerb-Invert
Grated Pit	Kerb-Lip
Junction Pit	Footpath
Drainage Pit	Driveway
Over Culvert	Track
Invert Level	Parking Bays
Down Pipe	Edge of Concrete
Spot on Bitumen	Edge of Paving
Sign	Guardrail
Letter Box	Shed
Traffic Signal Post	Building
Joint Use Pole	Verandah
Ballard	Edge of Bridge
Seat	Soffit
Pier / Column	Retaining Wall
Steps	Wall
Door	Retaining Wall-Crib
Electricity Cabinet	Retaining Wall-Concrete
Light Pole	Retaining Wall-Wood
Electricity Pole	Electricity O/H
Electricity Pole & Light	Electricity-U/G
Electricity Unclassified	Gas-U/G
Electricity Pit	Sewer-U/G
Electricity Marker Post	Water-U/G
Telecommunications Pit	Railway Line
Gas Valve	Cable Tray
Gas Unclassified	Fence
Sewer Pit	Contour-Major
Sewer Unclassified	Contour-Minor
Sewer Vent	
Stop Valve	
Fire Plug	
Fire Hydrant	
Water Meter	
Water Unclassified	
Water Tap	
Stay for Pole	
Pit Unclassified	
Pole Unclassified	
Utility Unclassified	
Boom Gate	
Gate	



NOTE  
THE CO-ORDINATES ARE  
MAP GRID AUSTRALIA  
(MGA 2020) ZONE 55

LEVELS MAY EXIST THAT HAVE BEEN  
TURNED OFF FOR PLOTTING CLARITY

THE MAPBASE SHOWN HAS NOT  
BEEN VERIFIED BY FIELD SURVEY

ADVERTISED  
PLAN

This copied document to be made available  
for the sole purpose of enabling  
its consideration and review as  
part of a planning process under the  
Planning and Environment Act 1987.  
The document must not be used for any  
purpose which may breach any  
copyright

FOR CONTINUATION REFER DRG-UU-0102

Reference	East	North	Elevation	Description
1	336142.075	5799887.055	51.825	Rivet in Path
2	336162.570	5800051.725	54.540	Rivet in Path
3	336120.910	5799715.455	51.280	Rivet in Kerb
4	336234.010	5799634.380	51.000	Rivet in Path
5	336314.015	5800213.810	56.770	Rivet in Path
6	336471.635	5799455.140	51.185	Rivet in Kerb
8	336590.525	5799592.925	51.975	Star Picket
9	336176.115	5800161.230	56.345	Rivet in Path
10	336192.795	5800230.070	56.880	Rivet in Path
11	336668.970	5799552.530	50.840	Rivet in Drive Fnd
12	336629.465	5799550.420	53.050	Rivet in Traffic Island
13	336507.385	5800063.870	54.085	Spike
14	336669.690	5800164.045	55.215	Rivet in Traffic Island
15	336740.545	5800112.870	54.050	Rivet in Elch FND
16	336530.140	5800183.950	55.160	Rivet in Conc
17	336423.680	5800186.790	55.670	Rivet in Conc
18	336702.985	5799639.980	51.800	Rivet in Conc
19	336228.130	5799700.640	51.150	RIVET
20	336280.815	5799679.695	51.740	RIVET
21	336302.305	5800096.100	55.340	RIVET RL?
22	336213.610	5800074.115	55.380	RIVET
23	336434.115	5800165.735	55.380	RIVET
24	336522.125	5800186.290	54.590	RIVET
25	336531.830	5800139.520	54.750	RIVET
26	336584.830	5799771.830	51.555	RIVET
27	336472.725	5799782.580	51.050	RIVET
28	336476.925	5799712.945	51.010	RIVET
29	336555.885	5799617.945	51.170	RIVET
30	336457.130	5799684.040	50.920	RIVET
31	336374.030	5799673.680	51.145	RIVET
32	336441.695	5799650.590	51.080	RIVET
33	336547.770	5799613.425	52.070	RIVET
34	336532.600	5799407.970	52.130	RIVET
35	336383.430	5799608.640	51.090	GIN
36	336298.120	5799644.040	51.140	GIN
37	336353.385	5799559.080	50.860	GIN
38	336254.125	5799758.390	51.535	PIN IN PIT
39	336251.195	5799794.315	51.475	GIN
40	336258.195	5799849.760	51.640	GIDH
41	336193.600	5799699.305	52.305	PIN
42	336203.895	5800026.300	51.875	GIN
43	336204.150	5800045.735	54.745	GIDH
45	336186.910	5800137.825	56.760	PIN
46	336312.885	5800150.805	55.905	SPIKE
47	336372.905	5800153.125	55.605	PIN
48	336591.735	5800114.030	54.260	PIN
49	336629.485	5800096.200	51.540	PIN
51	336617.945	5800013.240	51.325	PIN
52	336600.840	5799877.605	51.395	PIN
53	336385.480	5799787.005	51.135	PIN
54	336384.890	5799718.510	51.345	PIN
DRG02028	336622.725	5799930.135	52.125	BM (MGA94 TO MGA2020 ADOP)
PM670	336197.800	5800282.940	57.155	PM282 (MGA94 TO MGA2020 ADOP)
PM670	336550.375	5799643.390	51.050	PSM (MGA94 TO MGA2020 ADOP)

CLIENT

NOTATIONS

DATE OF SURVEY AUGUST & SEPTEMBER 2011  
DATE OF SURVEY CURRENCY REVIEW SEPTEMBER 2022  
DATE OF SURVEY UTILITY INVESTIGATION JANUARY- MARCH 2023  
CO-ORDS ARE MGA2020 ZONE 55 VIDE PM262 & PM670  
REDUCED LEVELS ARE TO AHD VIDE PM262 & PM670,  
WITH RL 57.153 & 51.050 QUOTED IN 2011.  
GRID INTERVAL 200m  
CONTOUR INTERVAL 0.2m

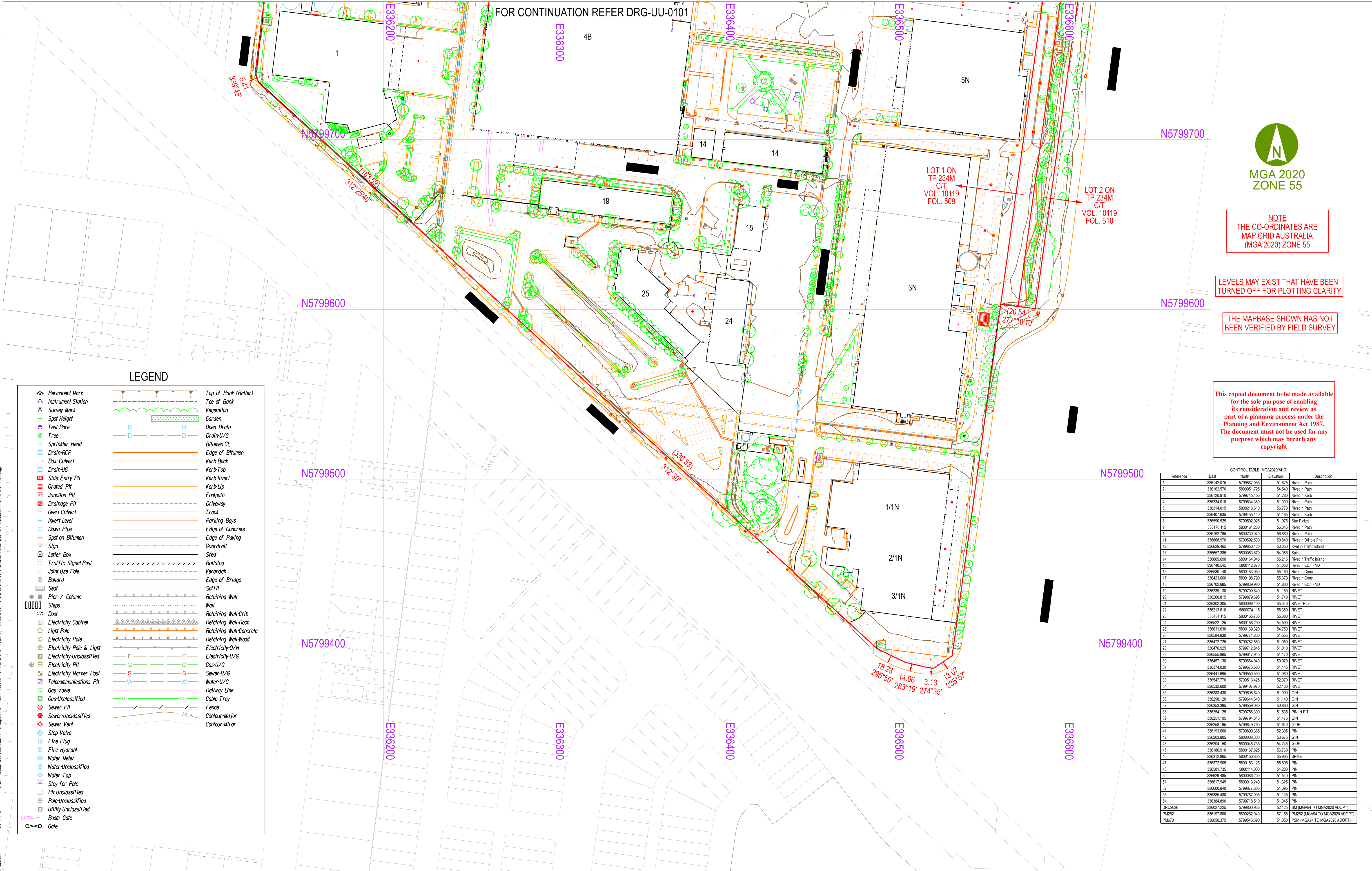
REV	DATE	REVISION DETAILS	APPROVED
A	13/09/22	TRANSLATION OF SURVEY TO MGA2020	MB
B	13/09/22	CURRENCY DETAIL REVIEW	MB
C	21/03/23	UPDATED FEATURES 2023	MB

SCALE	SIZE
1:1000	A1
DRAWN	KI
SURVEYED	MT
CHECKED	DW

FOR INFORMATION NOT FOR CONSTRUCTION	APPROVED
DATE	

PROJECT	GOODMAN CLAYTON BUSINESS PARK CENTRE ROAD, CLAYTON
TITLE	TOPOGRAPHIC SURVEY 2022 CURRENCY REVIEW
DRAWING No.	522571
PROJECT No.	0001
WBS	DRG
TYPE	UU
DISC	0101
NUMBER	0101
REV	C





C:\Users\andrew.aurecon\Documents\Goodman Clayton Business Park\GIS\5 Working Files\Topographic Survey\Map\DELIVERABLES\DRG-UU-0101\DRG-UU-0101.dwg  
4/4/2023 PM 4:47:52  
21/03/2023

NOTATIONS			
DATE OF SURVEY AUGUST & SEPTEMBER 2011			
DATE OF SURVEY CURRENCY REVIEW SEPTEMBER 2022			
DATE OF SURVEY UTILITY INVESTIGATION JANUARY- MARCH 2023			
CO-ORDS ARE MGA2020 ZONE 55 VIDE PM262 & PM670			
REDUCED LEVELS ARE TO AHD VIDE PM262 & PM670,			
WITH RL 57.153 & 51.050 QUOTED IN 2011.			
GRID INTERVAL 200m			
CONTOUR INTERVAL 0.2m			

REV	DATE	REVISION DETAILS	APPROVED
A	13/09/22	TRANSLATION OF SURVEY TO MGA2020	MB
B	13/09/22	CURRENCY DETAIL REVIEW	MB
C	21/03/23	UPDATED FEATURES 2023	MB

SCALE	SIZE
1:1000	A1
DRAWN	
KI	
SURVEYED	
MT	
CHECKED	
DW	

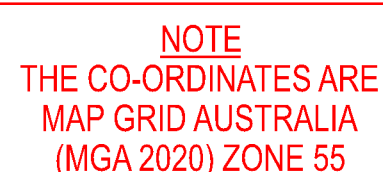
FOR INFORMATION NOT FOR CONSTRUCTION	
APPROVED	DATE

PROJECT	GOODMAN CLAYTON BUSINESS PARK CENTRE ROAD, CLAYTON				
TITLE	TOPOGRAPHIC SURVEY 2022 CURRENCY REVIEW				
DRAWING No.	PROJECT No.	WBS	TYPE	DISC	NUMBER
	522571	0001	DRG	UU	0102
					REV
					C









LEVELS MAY EXIST THAT HAVE BEEN  
TURNED OFF FOR PLOTTING CLARITY

THE MAPBASE SHOWN HAS NOT  
BEEN VERIFIED BY FIELD SURVEY

This copied document to be made available  
for the sole purpose of enabling  
its consideration and review as  
part of a planning process under the  
Planning and Environment Act 1987.  
The document must not be used for any  
purpose which may breach any  
copyright

CONTROL TABLE (MGA2020/AHD)				
Reference	East	North	Elevation	Description
1	336142.075	5799887.055	51.825	Rivet in Path
2	336162.570	5800051.725	54.840	Rivet in Path
3	336120.910	5799915.455	51.280	Rivet in Kerb
4	336130.010	5799834.580	51.030	Rivet in Path
5	336314.015	5900213.670	56.770	Rivet in Path
6	336407.635	5799545.140	51.185	Rivet in Kerb
7	336590.525	5799592.925	51.975	Star Picket
8	336716.115	5900161.230	56.345	Rivet in Path
9	336719.795	5900220.070	56.880	Rivet in Path
10	336720.870	5799932.520	53.840	Rivet in Chalkie End
12	336622.465	5799850.420	53.035	Rivet in Traffic Island
13	336657.385	5800063.870	54.085	Spike
14	336660.690	5800104.645	55.215	Rivet in Traffic Island
15	336740.545	5800112.870	54.055	Rivet in Eoch END
16	336743.140	5800183.980	55.160	Rivet in Conc.
17	336422.660	5900198.790	55.670	Rivet in Conc.
18	336702.985	5799839.990	51.800	Rivet in Eoch END
19	336236.130	5799707.040	51.150	RIVET
20	336260.815	5799879.695	51.740	RIVET
21	336322.335	5800096.100	55.340	Rivet RL7
22	336216.610	5800071.615	55.380	RIVET
23	336434.115	5800165.735	55.380	RIVET
24	336522.125	5800156.290	54.590	RIVET
25	336631.630	5800139.320	54.750	RIVET
26	336584.830	5799771.830	51.555	RIVET
27	336471.725	5799782.580	51.080	RIVET
28	336476.025	5799712.945	51.010	RIVET
29	336555.865	5799617.945	51.170	RIVET
30	336457.130	5799664.040	50.920	RIVET
31	336374.030	5799773.680	51.145	RIVET
32	336441.695	5799550.580	51.080	RIVET
33	336547.770	5799514.425	52.070	RIVET
34	336532.600	5799497.370	52.130	RIVET
35	336383.430	5799608.640	51.090	GIN
36	336298.120	5799644.640	51.140	GIN
37	336333.385	5799595.080	50.860	GIN
38	336254.125	5799734.390	51.535	GIN IN PIT
39	336251.195	5799734.390	51.475	GIN
40	336258.195	5799846.700	51.640	GIDH
41	336193.600	5799899.365	52.305	PIN
42	336203.805	5800008.300	53.675	GIN
43	336204.150	5800045.735	54.745	GIDH
44	336168.910	5800127.425	56.760	GIN
45	336317.865	5800150.805	55.035	SPIKE
46	336372.905	5800153.125	55.605	PIN
47	336581.735	5800114.030	54.280	PIN
48	336622.465	5800096.200	51.540	PIN
49	336619.945	5800113.940	51.535	PIN
50	336602.840	5798877.655	51.395	PIN
51	336385.480	5799787.005	51.135	PIN
52	336384.890	5799718.510	51.345	PIN
URC2026	336027.725	5799800.935	52.125	ML MGA84 to MGA2020 ADOP1
PM682	336017.800	5799822.940	51.155	PM682 (MGA84 to MGA2020 ADOP2)

4B

LOT 1 ON  
TP 234M  
C/T  
VOL. 1011  
FOL. 509

LOT 2 ON  
TP 234M  
C/T  
VOL. 1011  
FOL. 510

(20.54)  
277°10'10"

(330.53)  
312°30'

WARNING

LIMITED SITE VERIFICATIONS TO AS5488/2013 .  
NO GUARENTEE IS GIVEN THAT ALL EXISTING  
SERVICES THAT MAY EXIST ARE SHOWN.

WHERE UTILITY LOCATIONS ARE CLOSE TO DESIGN  
FURTHER QL-A VERIFICATIONS ARE RECOMMENDED.  
SCAN INDUCTION (QL-B) AND INDIRECT INDUCTION (QL-C)  
LEVELS (Dx.x) ARE TO APPROX. TRACED CENTRE OF ASSET  
GPR OBSERVATIONS (QL-D TO QL-C) LEVELS (Cx.x)  
ARE TO APPROX. TOP OF SUB-SURFACE ANOMALY.

▲ Permanent Mark		Top of Bank (Batter)
△ Instrument Station		Toe of Bank
△ Survey Mark		Vegetation
+ Spot Height		Garden
○ Test Bore		Open Drain
⊙ Tree		Drain-U/G
◇ Sprinkler Head		Blitumen-CL
□ Drain-RCP		Edge of Blitumen
▤ Box Culvert		Kerb-Back
□ Drain-U/G		Kerb-Top
▤ Side Entry Pit		Kerb-Invert
▤ Grated Pit		Kerb-Lip
▤ Junction Pit		Footpath
▤ Drainage Pit		Driveway
+ Overt Culvert		Track
+ Invert Level		Parking Bays
⊙ Down Pipe		Edge of Concrete
◇ Spot on Blitumen		Edge of Paving
♀ Sign		Guardrail
▤ Letter Box		Shed
⊙ Traffic Signal Post		Building
⊙ Joint Use Pole		Verandah
⊙ Ballard		Edge of Bridge
▤ Seat		Soffit
● Pier / Column		Retaining Wall
▤ Steps		Wall
▤ Door		Retaining Wall-Crib
▤ Electricity Cabinet		Retaining Wall-Rock
○ Light Pole		Retaining Wall-Concrete
○ Electricity Pole		Retaining Wall-Wood
▤ Electricity Pole & Light		Electricity-U/H
▤ Electricity-Unclassified		Electricity-U/G
▤ Electricity Pit		Gas-U/G
▤ Electricity Marker Post		Sewer-U/G
▤ Telecommunications Pit		Water-U/G
○ Gas Valve		Watering Line
▤ Gas-Unclassified		Cable Tray
▤ Sewer Pit		Fence
▤ Sewer-Unclassified		Contour-Major
◇ Sewer Vent		Contour-Minor
◇ Stop Valve		
○ Fire Plug		
○ Fire Hydrant		
◇ Water Meter		
◇ Water-Unclassified		
◇ Water Tap		
◇ Stay For Pole		
▤ Pit-Unclassified		
▤ Pole-Unclassified		
▤ Utility-Unclassified		
▤ Boom Gate		
▤ Gate		

**aurecon**  
www.aurecongroup.com

## ADVERTISED PLAN

DATE OF SURVEY AUGUST & SEPTEMBER 2011  
DATE OF SURVEY CURRENCY REVIEW SEPTEMBER 2022  
DATE OF SURVEY UTILITY INVESTIGATION JANUARY- MARCH 2023  
CO-ORDS ARE MGA2020 ZONE 55 VIDE PM262 & PM670  
REDUCED LEVELS ARE TO AHD VIDE PM262 & PM670,  
WITH RL 57.153 & 51.050 QUOTED IN 2011.  
GRID INTERVAL 200m  
CONTOUR INTERVAL 0.2m

REV	DATE	REVISION DETAILS	APPROVED
A	21/03/23	SITE UTILITIES & DESKTOP INVESTIGATION	MB

<b>SCALE</b>	<b>SIZE</b>
1:1000	A1
<b>DRAWN</b>	
KI	
<b>SURVEYED</b>	
AD	
<b>CHECKED</b>	
DW	

FOR INFORMATION  
NOT FOR CONSTRUCTION

**APPROVED**

PROJECT

TITLE

GOODMAN CLAYTON BUSINESS PARK  
CENTRE ROAD, CLAYTON

PHYSICAL SERVICES INVESTIGATION  
2023 CURRENCY REVIEW

DRAWING No.	PROJECT No.	WBS	TYPE	DISC	NUMBER	REV
	522571	0001	DRG	III	0502	A