



REFER TO SHEET 2 FOR DETAILS

This copied document to be made available for the sole purpose of enabling its consideration and review as part of a planning process under the Planning and Environment Act 1987. The document must not be used for any purpose which may breach any copyright

ADVERTISED PLAN

PRELIMINARY PLAN
FOR DISCUSSION PURPOSES ONLY

WARNING
BEWARE OF UNDERGROUND SERVICES
The locations of underground services shown are approximate only and their exact position should be proven on site.

DATE: 3/06/2024
MODEL: G28846-04-01_A
FILE: \\msrv02\traffixgroup\Projects\GRP2\GRP28846-00-Drawings\G28846-01-001 - Sarah.dgn

ISSUE	ISSUE DESCRIPTION	DESIGNER	CHECKED/APPROVED	ISSUE DATE	GENERAL NOTES
B	UPDATED ISSUE	SS	J STONE (RPE0008161)	24 APR 2024	1 BASE INFORMATION FROM SUPPLIED ARCHITECTS DRAWINGS / AERIAL PHOTOGRAPH (SOURCE: NEARMAP) 2 ALL DIMENSIONS ARE TO FACE OF KERB & CHANNEL UNLESS SPECIFIED OTHERWISE 3 MAIN ROAD - BURKE ROAD (VARIED SPEED ZONE 60km/h SOUTHBOUND & 40km/h NORTHBOUND AT SCHOOL TIMES)
C	UPDATED ISSUE	SOK	J STONE (RPE0008161)	06 MAY 2024	
D	UPDATED ISSUE	SOK	J STONE (RPE0008161)	09 MAY 2024	
E	UPDATED ISSUE	SOK	J STONE (RPE0008161)	17 MAY 2024	
F	UPDATED ISSUE	SOK	J STONE (RPE0008161)	03 JUN 2024	

DESIGNED	S STEPHENSON
CHECKED/APPROVED	J STONE
FILE NAME	G28846-01-00.dgn

Traffix Group
Level 28, 459 Collins Street
Melbourne, Victoria 3000
+61 3 9822 2888
www.traffixgroup.com.au

173 BURKE ROAD
GLEN IRIS
STONNINGTON CITY
OVERALL KEY PLAN

SCALE 1:500 (A3) SHEET No. 1 of 7 DWG No. G28846-04-01



DATE: 3/06/2024
 MODEL: G28846-04-02_A
 FILE: \Users\traffixgroup\MyEnergy\Projects\GPRP\GPRP28846-04-02-Drawings\G28846-01-001 - Sarah.dgn

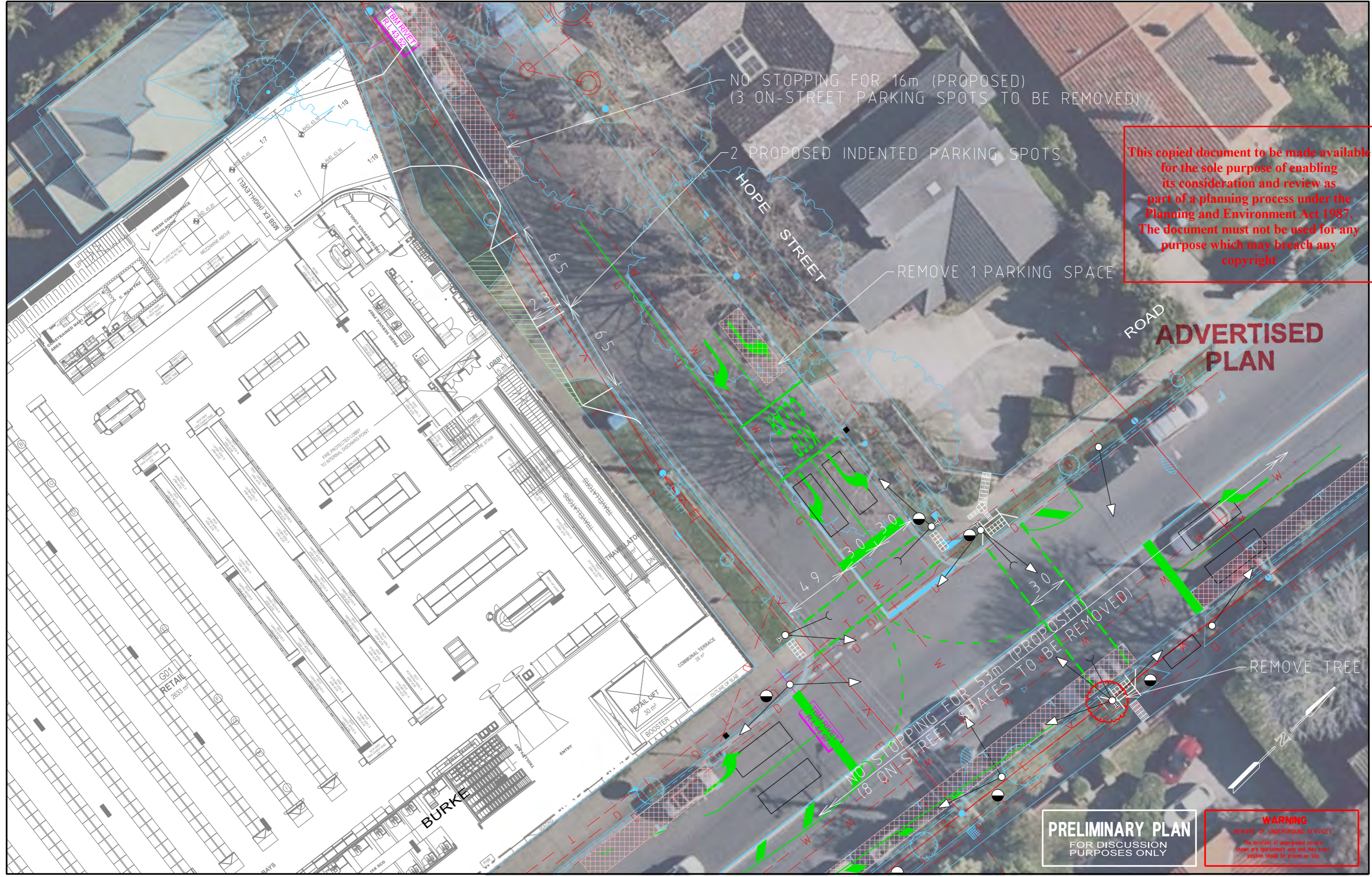
ISSUE	ISSUE DESCRIPTION	DESIGNER	CHECKED/APPROVED	ISSUE DATE	GENERAL NOTES
B	UPDATED ISSUE	SS	J STONE (RPE0008161)	24 APR 2024	1. BASE INFORMATION FROM SUPPLIED ARCHITECTS DRAWINGS / AERIAL PHOTOGRAPH (SOURCE: NEARMAP) 2. ALL DIMENSIONS ARE TO FACE OF KERB & CHANNEL UNLESS SPECIFIED OTHERWISE 3. MAIN ROAD - BURKE ROAD (VARIED SPEED ZONE 60km/h SOUTHBOUND & 40km/h NORTHBOUND AT SCHOOL TIMES) 4. TRAFFIC SIGNAL HARDWARE SHOWN AS INDICATIVE ONLY AND SUBJECT TO CHANGE ☒ ON-STREET PARKING TO BE REMOVED
C	UPDATED ISSUE	SOK	J STONE (RPE0008161)	06 MAY 2024	
D	UPDATED ISSUE	SOK	J STONE (RPE0008161)	09 MAY 2024	
E	UPDATED ISSUE	SOK	J STONE (RPE0008161)	17 MAY 2024	
F	UPDATED ISSUE	SOK	J STONE (RPE0008161)	03 JUN 2024	

DESIGNED	S STEPHENSON
CHECKED/APPROVED	J STONE
FILE NAME	G28846-01-00.dgn

Traffix Group
 Level 28, 459 Collins Street
 Melbourne, Victoria 3000
 +61 3 9822 2888
 www.traffixgroup.com.au

173 BURKE ROAD
 GLEN IRIS
 STONNINGTON CITY
CONCEPT PLAN

SCALE 1:250 (A3) SHEET No. 2 of 7 DWG No. G28846-04-02



DATE: 3/06/2024
 MODEL: G28846-04-03_A
 FILE: \Users\traffixgroup\MyEnergy\Projects\GPR2\GPR28846-03-Drawings\G28846-01-001 - Sarah.dgn






ISSUE	ISSUE DESCRIPTION	DESIGNER	CHECKED/APPROVED	ISSUE DATE	GENERAL NOTES
B	UPDATED ISSUE	S.S	J STONE (RPE0008161)	24 APR 2024	1. BASE INFORMATION FROM SUPPLIED ARCHITECTS DRAWINGS / AERIAL PHOTOGRAPH (SOURCE: NEARMAP) 2. ALL DIMENSIONS ARE TO FACE OF KERB & CHANNEL UNLESS SPECIFIED OTHERWISE 3. MAIN ROAD - BURKE ROAD (VARIED SPEED ZONE 60km/h SOUTHBOUND & 40km/h NORTHBOUND AT SCHOOL TIMES) 4. TRAFFIC SIGNAL HARDWARE SHOWN AS INDICATIVE ONLY AND SUBJECT TO CHANGE ON-STREET PARKING TO BE REMOVED
C	UPDATED ISSUE	SOK	J STONE (RPE0008161)	06 MAY 2024	
D	UPDATED ISSUE	SOK	J STONE (RPE0008161)	09 MAY 2024	
E	UPDATED ISSUE	SOK	J STONE (RPE0008161)	17 MAY 2024	
F	UPDATED ISSUE	SOK	J STONE (RPE0008161)	03 JUN 2024	

DESIGNED	S. STEPHENSON
CHECKED/APPROVED	J. STONE
FILE NAME	G28846-01-00.dgn

Traffix Group
 Level 28, 459 Collins Street
 Melbourne, Victoria 3000
 +61 3 9822 2888
 www.traffixgroup.com.au

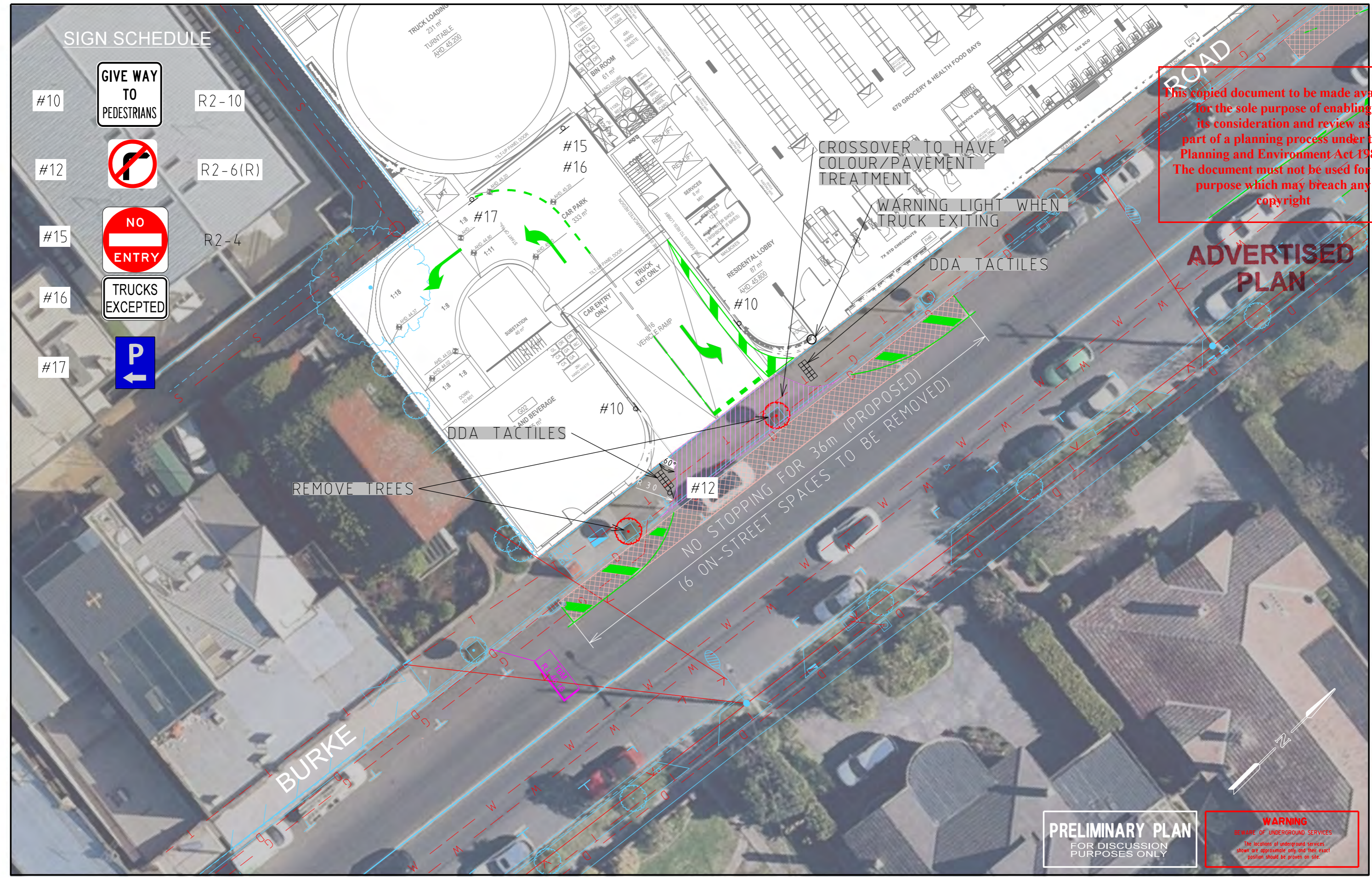
173 BURKE ROAD
GLEN IRIS
 STONNINGTON CITY
FUNCTIONAL LAYOUT PLAN
 SCALE 1:250 (A3)
 SHEET No. 3 of 7
 DWG No. G28846-04-03

SIGN SCHEDULE

- #10  R2-10
- #12  R2-6(R)
- #15  R2-4
- #16 
- #17 

This copied document to be made available for the sole purpose of enabling its consideration and review as part of a planning process under the Planning and Environment Act 1987. The document must not be used for any purpose which may breach any copyright

ADVERTISED PLAN




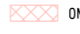
PRELIMINARY PLAN
FOR DISCUSSION
PURPOSES ONLY

WARNING
BEWARE OF UNDERGROUND SERVICES
The locations of underground services shown are approximate only and their exact position should be proven on site.

DATE: 3/06/2024
MODEL: G28846-04-04_A
FILE: \\nsrv02\group\Symetry\Projects\GRP2\GRP28846-04-Drawings\G28846-01-001 - Sarah.dgn

ISSUE	ISSUE DESCRIPTION	DESIGNER	CHECKED/APPROVED	ISSUE DATE
B	UPDATED ISSUE	SS	J STONE (RPE0008161)	24 APR 2024
C	UPDATED ISSUE	SOK	J STONE (RPE0008161)	06 MAY 2024
D	UPDATED ISSUE	SOK	J STONE (RPE0008161)	09 MAY 2024
E	UPDATED ISSUE	SOK	J STONE (RPE0008161)	17 MAY 2024
F	UPDATED ISSUE	SOK	J STONE (RPE0008161)	03 JUN 2024

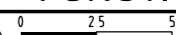
GENERAL NOTES
 1 BASE INFORMATION FROM SUPPLIED ARCHITECTS DRAWINGS / AERIAL PHOTOGRAPH (SOURCE: NEARMAP)
 2 ALL DIMENSIONS ARE TO FACE OF KERB & CHANNEL UNLESS SPECIFIED OTHERWISE
 3 MAIN ROAD - BURKE ROAD (VARIED SPEED ZONE 60km/h SOUTHBOUND & 40km/h NORTHBOUND AT SCHOOL TIMES)

 CROSSOVER PAVEMENT TREATMENT
 ON-STREET PARKING TO BE REMOVED

DESIGNED	S STEPHENSON
CHECKED/APPROVED	J STONE
FILE NAME	G28846-01-00.dgn

Traffix Group
 Level 28, 459 Collins Street
 Melbourne, Victoria 3000
 +61 3 9822 2888
 www.traffixgroup.com.au

173 BURKE ROAD
 GLEN IRIS
 STONNINGTON CITY
FUNCTIONAL LAYOUT PLAN

SCALE 1:250 (A3)  SHEET No. 4 of 7 DWG No. G28846-04-04

This copied document to be made available for the sole purpose of enabling its consideration and review as part of a planning process under the Planning and Environment Act 1987. The document must not be used for any purpose which may breach any copyright

ADVERTISED PLAN

VEHICLE USED IN SIMULATION
(VEHICLE SPEED - 5km/h)
8.80

8.8m MRV meters

Width : 2.50
Track : 2.50
Lock to Lock Time : 6.0
Steering Angle : 34.0

LEGEND

--- VEHICLE BODY
- - - BODY CLEARANCE (500mm)

PRELIMINARY PLAN
FOR DISCUSSION PURPOSES ONLY

WARNING
BEWARE OF UNDERGROUND SERVICES
The locations of underground services shown are approximations only and their exact position should be proven on site.

DATE: 3/06/2024
MODEL: G28846-04-05 SP1
FILE: \Users\traffixgroup\Documents\Projects\G28846-04-05-001 - Sarah.dgn

ISSUE	ISSUE DESCRIPTION	DESIGNER	CHECKED/APPROVED	ISSUE DATE	GENERAL NOTES
B	UPDATED ISSUE	SS	J STONE (RPE0008161)	24 APR 2024	1. BASE INFORMATION FROM SUPPLIED ARCHITECTS DRAWINGS / AERIAL PHOTOGRAPH (SOURCE: NEARMAP) 2. ALL DIMENSIONS ARE TO FACE OF KERB & CHANNEL UNLESS SPECIFIED OTHERWISE 3. MAIN ROAD - BURKE ROAD (VARIED SPEED ZONE 60km/h SOUTHBOUND & 40km/h NORTHBOUND AT SCHOOL TIMES) 4. TRAFFIC SIGNAL HARDWARE SHOWN AS INDICATIVE ONLY AND SUBJECT TO CHANGE
C	UPDATED ISSUE	SOK	J STONE (RPE0008161)	06 MAY 2024	
D	UPDATED ISSUE	SOK	J STONE (RPE0008161)	09 MAY 2024	
E	UPDATED ISSUE	SOK	J STONE (RPE0008161)	17 MAY 2024	
F	UPDATED ISSUE	SOK	J STONE (RPE0008161)	03 JUN 2024	

DESIGNED	S STEPHENSON
CHECKED/APPROVED	J STONE
FILE NAME	G28846-01-00.dgn

Traffix Group
Level 28, 459 Collins Street
Melbourne, Victoria 3000
+61 3 9822 2888
www.traffixgroup.com.au

173 BURKE ROAD
GLEN IRIS
STONNINGTON CITY
SWEPT PATH ASSESSMENTS

SCALE 1:250 (A3)

SHEET No. 5 of 7 DWG No. G28846-04-05

This copied document to be made available for the sole purpose of enabling its consideration and review as part of a planning process under the Planning and Environment Act 1987. The document must not be used for any purpose which may breach any copyright

ADVERTISED PLAN

VEHICLE USED IN SIMULATION
(VEHICLE SPEED - 5km/h)
8.80

8.8m MRV meters
Width : 2.50
Track : 2.50
Lock to Lock Time : 6.0
Steering Angle : 34.0

LEGEND
- - - VEHICLE BODY
- - - BODY CLEARANCE (500mm)

PRELIMINARY PLAN
FOR DISCUSSION PURPOSES ONLY

WARNING
BEWARE OF UNDERGROUND SERVICES
The locations of underground services shown are approximations only and their exact position should be proven on site.

DATE: 3/06/2024
MODEL: G28846-04-05A_SFI
FILE: \Users\traffixgroup\MyEnergy\Projects\GRP2\GRP28846-04-05A-Drawings\G28846-01-001 - Sarah.dgn

ISSUE	ISSUE DESCRIPTION	DESIGNER	CHECKED/APPROVED	ISSUE DATE	GENERAL NOTES
B	UPDATED ISSUE	SS	J STONE (RPE0008161)	24 APR 2024	1. BASE INFORMATION FROM SUPPLIED ARCHITECTS DRAWINGS / AERIAL PHOTOGRAPH (SOURCE: NEARMAP) 2. ALL DIMENSIONS ARE TO FACE OF KERB & CHANNEL UNLESS SPECIFIED OTHERWISE 3. MAIN ROAD - BURKE ROAD (VARIED SPEED ZONE 60km/h SOUTHBOUND & 40km/h NORTHBOUND AT SCHOOL TIMES) 4. TRAFFIC SIGNAL HARDWARE SHOWN AS INDICATIVE ONLY AND SUBJECT TO CHANGE
C	UPDATED ISSUE	SOK	J STONE (RPE0008161)	06 MAY 2024	
D	UPDATED ISSUE	SOK	J STONE (RPE0008161)	09 MAY 2024	
E	UPDATED ISSUE	SOK	J STONE (RPE0008161)	17 MAY 2024	
F	UPDATED ISSUE	SOK	J STONE (RPE0008161)	03 JUN 2024	

DESIGNED	S STEPHENSON
CHECKED/APPROVED	J STONE
FILE NAME	G28846-01-00.dgn

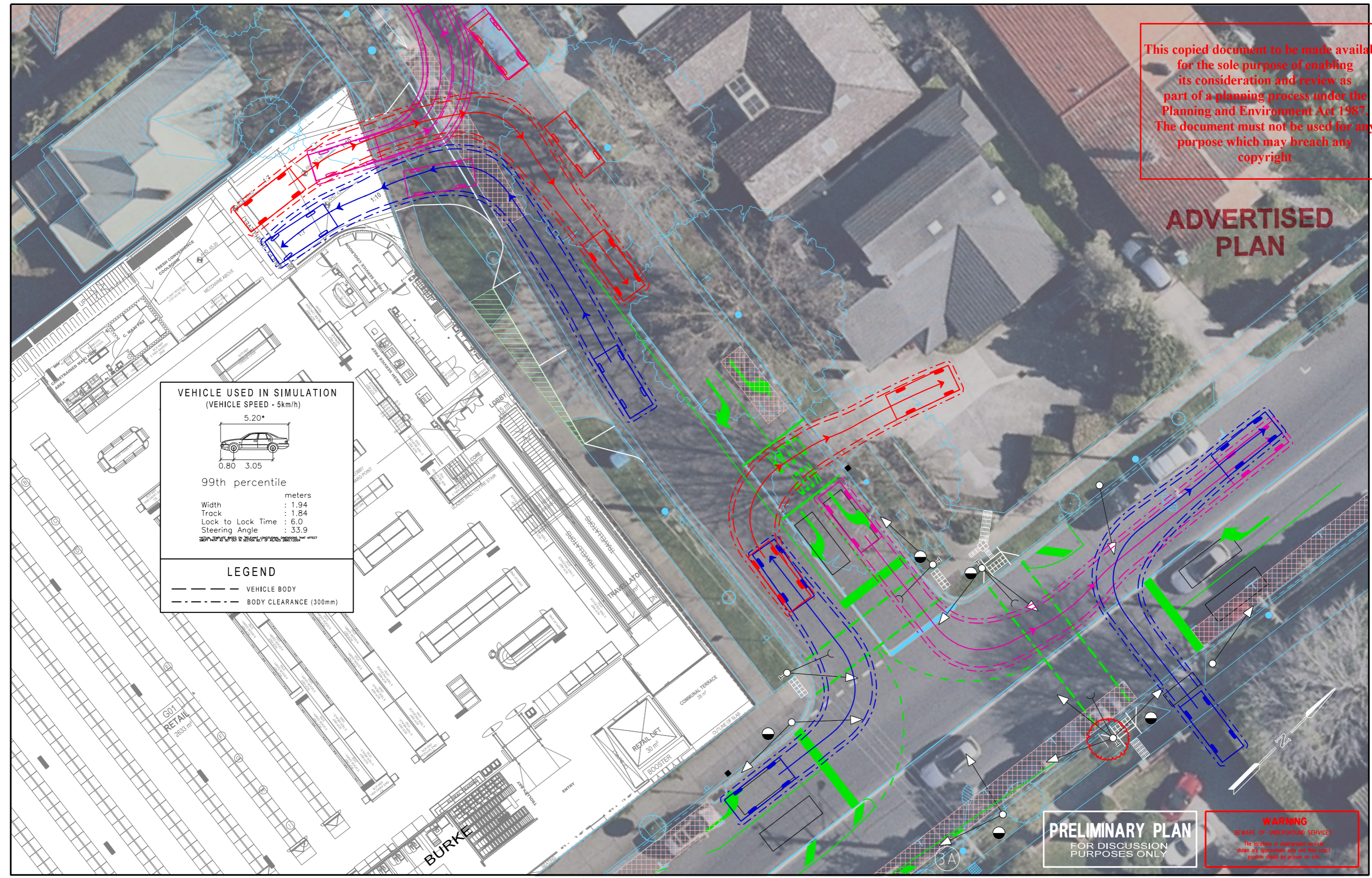
Traffix Group
Level 28, 459 Collins Street
Melbourne, Victoria 3000
+61 3 9822 2888
www.traffixgroup.com.au

**173 BURKE ROAD
GLEN IRIS**
STONNINGTON CITY
SWEPT PATH ASSESSMENTS

SCALE 1:250 (A3) SHEET No. 5 of 7 DWG No. G28846-04-05A

This copied document to be made available for the sole purpose of enabling its consideration and review as part of a planning process under the Planning and Environment Act 1987. The document must not be used for any purpose which may breach any copyright

ADVERTISED PLAN



VEHICLE USED IN SIMULATION
(VEHICLE SPEED - 5km/h)

5.20*

99th percentile

Width : 1.94 meters
Track : 1.84
Lock to Lock Time : 6.0
Steering Angle : 33.9

LEGEND

--- VEHICLE BODY
- - - BODY CLEARANCE (300mm)

PRELIMINARY PLAN
FOR DISCUSSION PURPOSES ONLY

WARNING
BEWARE OF UNDERGROUND SERVICES
The locations of underground services shown are approximations only and their exact position should be proven in situ.

DATE: 06/05/24
MODEL: G28846-04-05B-SP1
FILE: \\msrv02\group\synergy\Projects\GRP2\GRP28846-04-05B-Drawings\G28846-01-001 - Sarah.dgn

ISSUE	ISSUE DESCRIPTION	DESIGNER	CHECKED/APPROVED	ISSUE DATE	GENERAL NOTES
B	UPDATED ISSUE	SS	J STONE (RPE0008161)	24 APR 2024	1. BASE INFORMATION FROM SUPPLIED ARCHITECTS DRAWINGS / AERIAL PHOTOGRAPH (SOURCE: NEARMAP) 2. ALL DIMENSIONS ARE TO FACE OF KERB & CHANNEL UNLESS SPECIFIED OTHERWISE 3. MAIN ROAD - BURKE ROAD (VARIED SPEED ZONE 60km/h SOUTHBOUND & 40km/h NORTHBOUND AT SCHOOL TIMES) 4. TRAFFIC SIGNAL HARDWARE SHOWN AS INDICATIVE ONLY AND SUBJECT TO CHANGE
C	UPDATED ISSUE	SOK	J STONE (RPE0008161)	06 MAY 2024	
D	UPDATED ISSUE	SOK	J STONE (RPE0008161)	09 MAY 2024	
E	UPDATED ISSUE	SOK	J STONE (RPE0008161)	17 MAY 2024	
F	UPDATED ISSUE	SOK	J STONE (RPE0008161)	03 JUN 2024	

DESIGNED: S STEPHENSON
CHECKED/APPROVED: J STONE
FILE NAME: G28846-01-00.dgn

Traffix Group
Level 28, 459 Collins Street
Melbourne, Victoria 3000
+61 3 9822 2888
www.traffixgroup.com.au

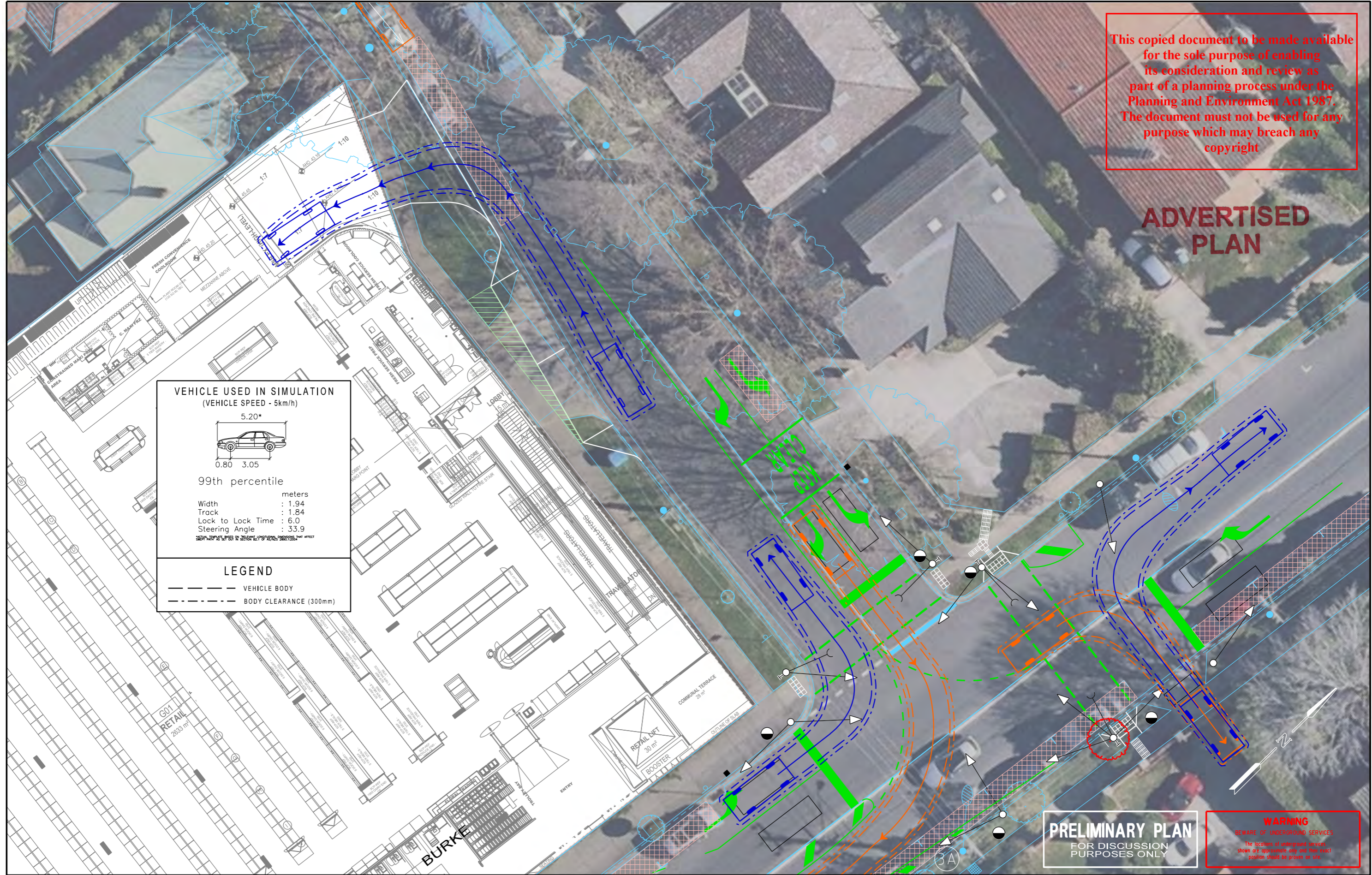
173 BURKE ROAD
GLEN IRIS
STONNINGTON CITY
SWEPT PATH ASSESSMENTS

SCALE: 1:250 (A3)

SHEET No. 5 of 7 | DWG No. G28846-04-05B

This copied document to be made available for the sole purpose of enabling its consideration and review as part of a planning process under the Planning and Environment Act 1987. The document must not be used for any purpose which may breach any copyright

ADVERTISED PLAN



VEHICLE USED IN SIMULATION
(VEHICLE SPEED - 5km/h)

5.20*

0.80 3.05

99th percentile

Width : 1.94 meters
Track : 1.84
Lock to Lock Time : 6.0
Steering Angle : 33.9

LEGEND

--- VEHICLE BODY
- - - BODY CLEARANCE (300mm)

PRELIMINARY PLAN
FOR DISCUSSION PURPOSES ONLY

WARNING
BEWARE OF UNDERGROUND SERVICES
The locations of underground services shown are approximations only and their exact position should be proven on site.

DATE: 3/06/2024
MODEL: G28846-04-05C-SP1
FILE: \\msnsv02\group\Sydney\IP\Projects\GRP2\GRP28846-04-05C-Drawings\G28846-01-001 - Sarah.dgn

ISSUE	ISSUE DESCRIPTION	DESIGNER	CHECKED/APPROVED	ISSUE DATE	GENERAL NOTES
B	UPDATED ISSUE	SS	J STONE (RPE0008161)	24 APR 2024	1. BASE INFORMATION FROM SUPPLIED ARCHITECTS DRAWINGS / AERIAL PHOTOGRAPH (SOURCE: NEARMAP) 2. ALL DIMENSIONS ARE TO FACE OF KERB & CHANNEL UNLESS SPECIFIED OTHERWISE 3. MAIN ROAD - BURKE ROAD (VARIED SPEED ZONE 60km/h SOUTHBOUND & 40km/h NORTHBOUND AT SCHOOL TIMES) 4. TRAFFIC SIGNAL HARDWARE SHOWN AS INDICATIVE ONLY AND SUBJECT TO CHANGE
C	UPDATED ISSUE	SOK	J STONE (RPE0008161)	06 MAY 2024	
D	UPDATED ISSUE	SOK	J STONE (RPE0008161)	09 MAY 2024	
E	UPDATED ISSUE	SOK	J STONE (RPE0008161)	17 MAY 2024	
F	UPDATED ISSUE	SOK	J STONE (RPE0008161)	03 JUN 2024	

DESIGNED	S STEPHENSON
CHECKED/APPROVED	J STONE
FILE NAME	G28846-01-00.dgn

Traffix Group

Level 28, 459 Collins Street
Melbourne, Victoria 3000
+61 3 9822 2888
www.traffixgroup.com.au

173 BURKE ROAD
GLEN IRIS
STONNINGTON CITY
SWEPT PATH ASSESSMENTS

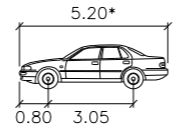
SCALE 1:250 (A3)

SHEET No. 5 of 7 DWG No. G28846-04-05C

This copied document to be made available for the sole purpose of enabling its consideration and review as part of a planning process under the Planning and Environment Act 1987. The document must not be used for any purpose which may breach any copyright

ADVERTISED PLAN

VEHICLE USED IN SIMULATION
(VEHICLE SPEED - 5km/h)



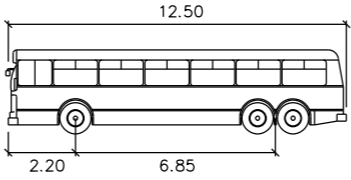
99th percentile

Width	: 1.94
Track	: 1.84
Lock to Lock Time	: 6.0
Steering Angle	: 33.9

LEGEND

- VEHICLE BODY
- - - BODY CLEARANCE (300mm)

VEHICLE USED IN SIMULATION



12.5m Bus AustRoads

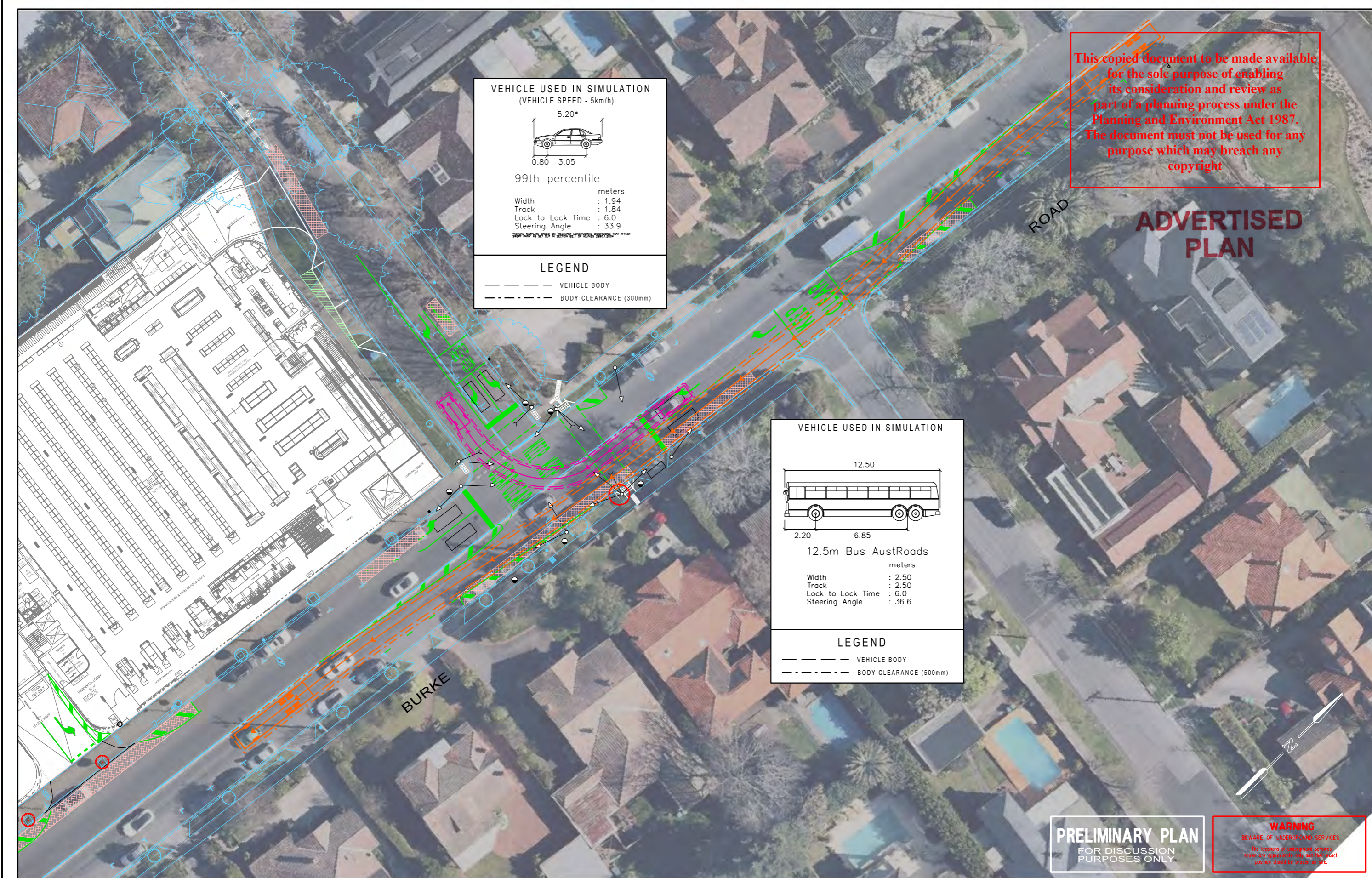
Width	: 2.50
Track	: 2.50
Lock to Lock Time	: 6.0
Steering Angle	: 36.6

LEGEND

- VEHICLE BODY
- - - BODY CLEARANCE (500mm)

PRELIMINARY PLAN
FOR DISCUSSION PURPOSES ONLY

WARNING
BEWARE OF UNDERGROUND SERVICES
The locations of underground services shown are approximate only and their exact position should be verified in situ.



3/06/2024
 MODEL: G28846-04-05D_SPS
 FILE: \\msnrv02group\synergy\Projects\GRP2\GRP28846-04-05-Drawings\G28846-04-01-001 - Sarah.dgn

ISSUE	ISSUE DESCRIPTION	DESIGNER	CHECKED/APPROVED	ISSUE DATE	GENERAL NOTES
B	UPDATED ISSUE	SS	J STONE (RPE0008161)	24 APR 2024	1. BASE INFORMATION FROM SUPPLIED ARCHITECTS DRAWINGS / AERIAL PHOTOGRAPH (SOURCE: NEARMAP) 2. ALL DIMENSIONS ARE TO FACE OF KERB & CHANNEL UNLESS SPECIFIED OTHERWISE 3. MAIN ROAD - BURKE ROAD (VARIED SPEED ZONE 60km/h SOUTHBOUND & 40km/h NORTHBOUND AT SCHOOL TIMES) 4. TRAFFIC SIGNAL HARDWARE SHOWN AS INDICATIVE ONLY AND SUBJECT TO CHANGE
C	UPDATED ISSUE	SOK	J STONE (RPE0008161)	06 MAY 2024	
D	UPDATED ISSUE	SOK	J STONE (RPE0008161)	09 MAY 2024	
E	UPDATED ISSUE	SOK	J STONE (RPE0008161)	17 MAY 2024	
F	UPDATED ISSUE	SOK	J STONE (RPE0008161)	03 JUN 2024	

DESIGNED	S STEPHENSON
CHECKED/APPROVED	J STONE
FILE NAME	G28846-01-00.dgn

Traffix Group

Level 28, 459 Collins Street
Melbourne, Victoria 3000
+61 3 9822 2888
www.traffixgroup.com.au

173 BURKE ROAD
GLEN IRIS
STONNINGTON CITY

SWEPT PATH ASSESSMENTS

SCALE 1:500 (A3)

SHEET No. 5 of 7

DWG No. G28846-04-05D

This copied document to be made available for the sole purpose of enabling its consideration and review as part of a planning process under the Planning and Environment Act 1987. The document must not be used for any purpose which may breach any copyright

VEHICLE USED IN SIMULATION
(VEHICLE SPEED - 5km/h)

99th percentile

Width	: 1.94
Track	: 1.84
Lock to Lock Time	: 6.0
Steering Angle	: 33.9

NOTE: THESE VALUES ARE INDICATIVE ONLY AND SUBJECT TO CHANGE

LEGEND

- VEHICLE BODY
- - - BODY CLEARANCE (300mm)

VEHICLE USED IN SIMULATION
(VEHICLE SPEED - 5km/h)

99th percentile

Width	: 1.94
Track	: 1.84
Lock to Lock Time	: 6.0
Steering Angle	: 33.9

NOTE: THESE VALUES ARE INDICATIVE ONLY AND SUBJECT TO CHANGE

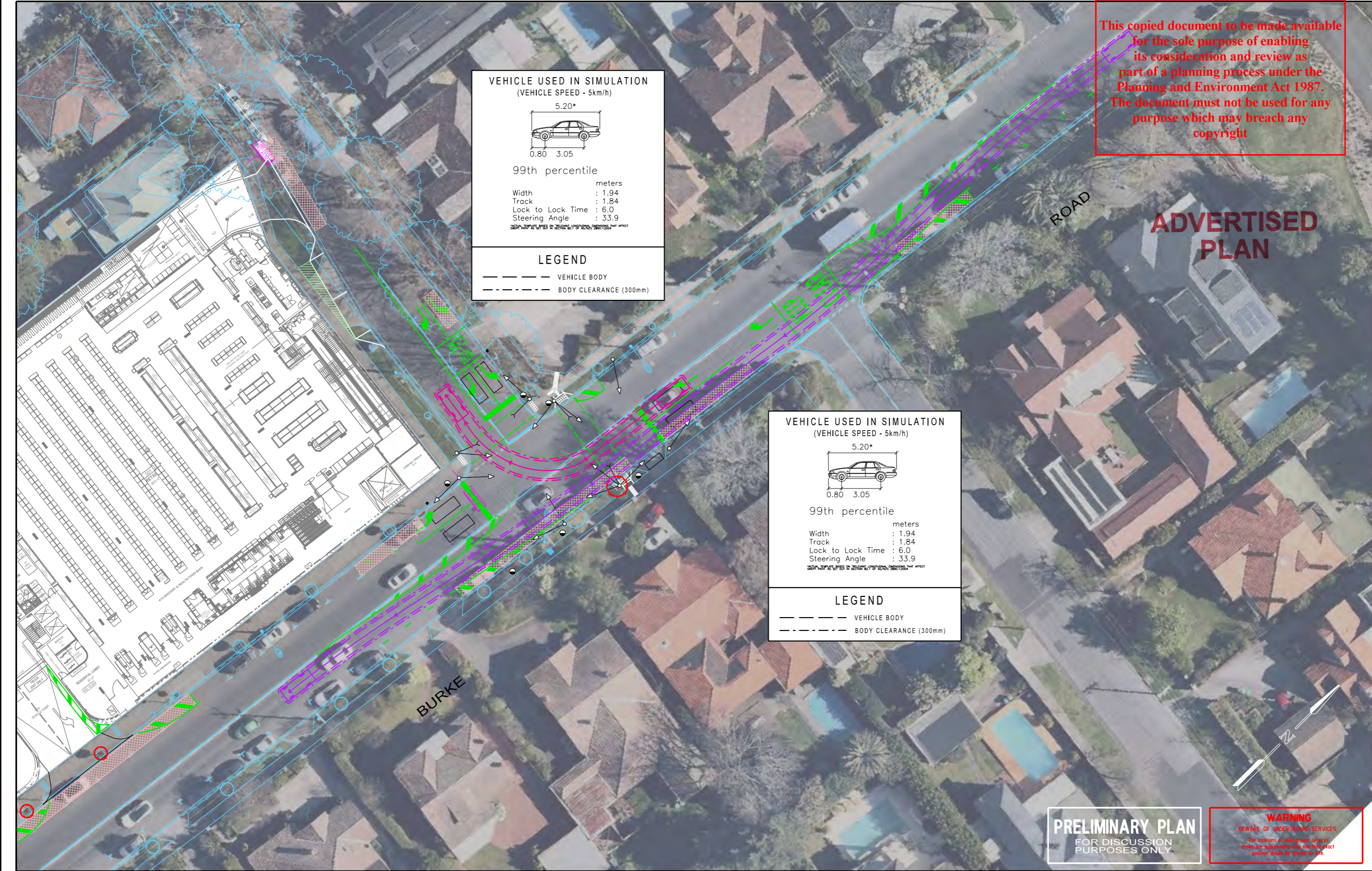
LEGEND

- VEHICLE BODY
- - - BODY CLEARANCE (300mm)

ADVERTISED PLAN

PRELIMINARY PLAN
FOR DISCUSSION PURPOSES ONLY

WARNING
BEWARE OF UNDERGROUND SERVICES
The locations of underground services shown are approximate only and their exact position should be verified in the field.



3/06/2024
 MODEL: G28846-04-05E-SP3
 FILE: \\msnsv02\group\synergy\Projects\GRP2\GRP28846-00-Drawings\G28846-01-001 - SarahLudjn

ISSUE	ISSUE DESCRIPTION	DESIGNER	CHECKED/APPROVED	ISSUE DATE	GENERAL NOTES
B	UPDATED ISSUE	SS	J STONE (RPE0008161)	24 APR 2024	1. BASE INFORMATION FROM SUPPLIED ARCHITECTS DRAWINGS / AERIAL PHOTOGRAPH (SOURCE: NEARMAP) 2. ALL DIMENSIONS ARE TO FACE OF KERB & CHANNEL UNLESS SPECIFIED OTHERWISE 3. MAIN ROAD - BURKE ROAD (VARIED SPEED ZONE 60km/h SOUTHBOUND & 40km/h NORTHBOUND AT SCHOOL TIMES) 4. TRAFFIC SIGNAL HARDWARE SHOWN AS INDICATIVE ONLY AND SUBJECT TO CHANGE
C	UPDATED ISSUE	SOK	J STONE (RPE0008161)	06 MAY 2024	
D	UPDATED ISSUE	SOK	J STONE (RPE0008161)	09 MAY 2024	
E	UPDATED ISSUE	SOK	J STONE (RPE0008161)	17 MAY 2024	
F	UPDATED ISSUE	SOK	J STONE (RPE0008161)	03 JUN 2024	

DESIGNED	S STEPHENSON
CHECKED/APPROVED	J STONE
FILE NAME	G28846-01-00.dgn

Traffix Group
 Level 28, 459 Collins Street
 Melbourne, Victoria 3000
 +61 3 9822 2888
 www.traffixgroup.com.au

173 BURKE ROAD
 GLEN IRIS
 STONNINGTON CITY
SWEPT PATH ASSESSMENTS

SCALE 1:250 (A3)

SHEET No. 5 of 7 DWG No. G28846-04-05E

This copied document to be made available for the sole purpose of enabling its consideration and review as part of a planning process under the Planning and Environment Act 1987. The document must not be used for any purpose which may breach any copyright

ADVERTISED PLAN

VEHICLE USED IN SIMULATION
(VEHICLE SPEED - 5km/h)
8.80

8.8m MRV meters
Width : 2.50
Track : 2.50
Lock to Lock Time : 6.0
Steering Angle : 34.0

LEGEND
- - - VEHICLE BODY
- - - BODY CLEARANCE (500mm)

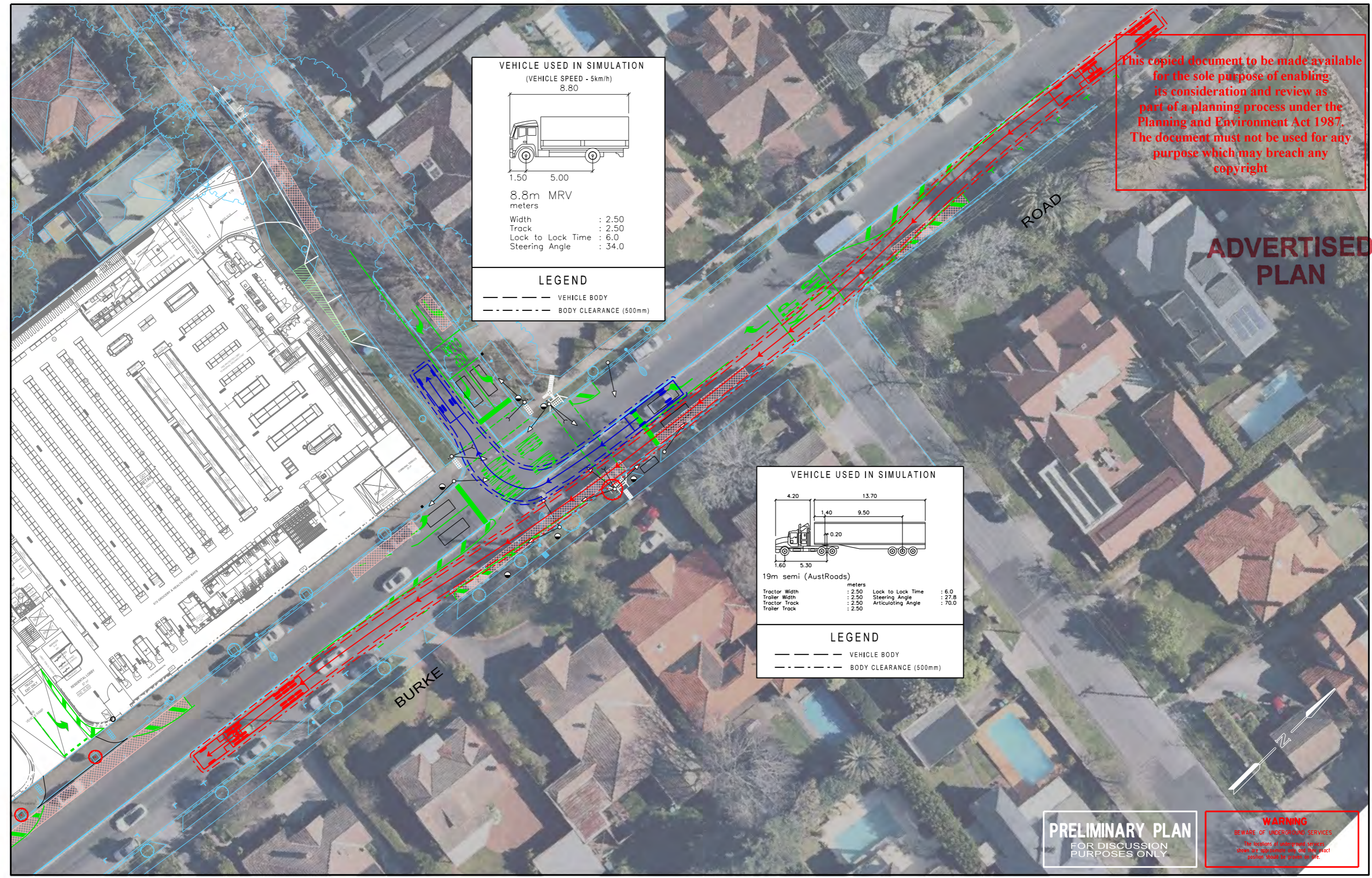
VEHICLE USED IN SIMULATION

19m semi (AustRoads)
Tractor Width : 2.50 meters
Trailer Width : 2.50 meters
Tractor Track : 2.50 meters
Trailer Track : 2.50 meters
Lock to Lock Time : 6.0 meters
Steering Angle : 27.8 degrees
Articulating Angle : 70.0 degrees

LEGEND
- - - VEHICLE BODY
- - - BODY CLEARANCE (500mm)

PRELIMINARY PLAN
FOR DISCUSSION PURPOSES ONLY

WARNING
BEWARE OF UNDERGROUND SERVICES
The locations of underground services shown are approximate only and their exact position should be verified in situ.



3/06/2024 MODEL: G28846-04-05F-SP3 FILE: \\msv02zgroup\synergy\Projects\GRP2\GRP2\Drawings\G28846-01-001 - Sarah.dgn

ISSUE	ISSUE DESCRIPTION	DESIGNER	CHECKED/APPROVED	ISSUE DATE	GENERAL NOTES
B	UPDATED ISSUE	SS	J STONE (RPE0008161)	24 APR 2024	1. BASE INFORMATION FROM SUPPLIED ARCHITECTS DRAWINGS / AERIAL PHOTOGRAPH (SOURCE: NEARMAP) 2. ALL DIMENSIONS ARE TO FACE OF KERB & CHANNEL UNLESS SPECIFIED OTHERWISE 3. MAIN ROAD - BURKE ROAD (VARIED SPEED ZONE 60km/h SOUTHBOUND & 40km/h NORTHBOUND AT SCHOOL TIMES) 4. TRAFFIC SIGNAL HARDWARE SHOWN AS INDICATIVE ONLY AND SUBJECT TO CHANGE
C	UPDATED ISSUE	SOK	J STONE (RPE0008161)	06 MAY 2024	
D	UPDATED ISSUE	SOK	J STONE (RPE0008161)	09 MAY 2024	
E	UPDATED ISSUE	SOK	J STONE (RPE0008161)	17 MAY 2024	
F	UPDATED ISSUE	SOK	J STONE (RPE0008161)	03 JUN 2024	

DESIGNED	S STEPHENSON
CHECKED/APPROVED	J STONE
FILE NAME	G28846-01-00.dgn

Traffix Group
Level 28, 459 Collins Street
Melbourne, Victoria 3000
+61 3 9822 2888
www.traffixgroup.com.au

173 BURKE ROAD
GLEN IRIS
STONNINGTON CITY
SWEPT PATH ASSESSMENTS

SCALE 1:500 (A3) SHEET No. 5 of 7 DWG No. G28846-04-05F

This copied document to be made available for the sole purpose of enabling its consideration and review as part of a planning process under the Planning and Environment Act 1987. The document must not be used for any purpose which may breach any copyright

ADVERTISED PLAN

4m x 4m INDICATIVE SIGHT TRIANGLE

VEHICLE USED IN SIMULATION
(VEHICLE SPEED - 5km/h)
12.50

12.5m HRV

Width : 2.50 meters
Track : 2.50
Lock to Lock Time : 6.0
Steering Angle : 35.2

LEGEND

--- VEHICLE BODY
- - - BODY CLEARANCE (500mm)

PRELIMINARY PLAN
FOR DISCUSSION PURPOSES ONLY

WARNING
BEWARE OF UNDERGROUND SERVICES
The locations of underground services shown are approximate only and their exact position should be proven on site.

DATE: 3/06/2024
MODEL: G28846-04-06 SP2
FILE: \\msrv02\group\Systems\Projects\G28846-04-06-Drawings\G28846-01-001 - Sarah.dgn

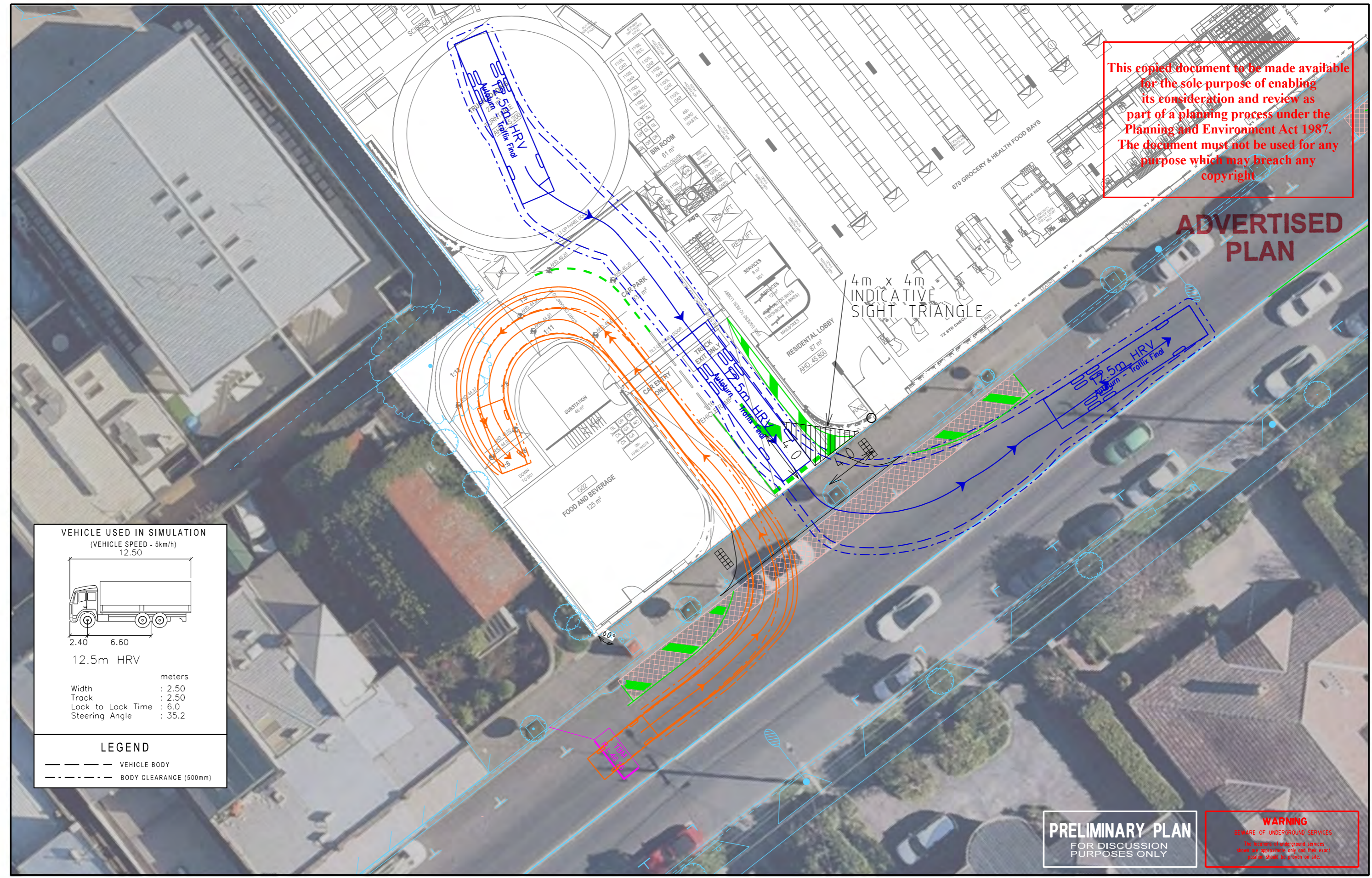
ISSUE	ISSUE DESCRIPTION	DESIGNER	CHECKED/APPROVED	ISSUE DATE	GENERAL NOTES	DESIGNED	Checked/Approved	File Name	Scale	Sheet No.	DWG No.	
B	UPDATED ISSUE	SS	J STONE (RPE0008161)	22 APR 2024	1 BASE INFORMATION FROM SUPPLIED ARCHITECTS DRAWINGS / AERIAL PHOTOGRAPH (SOURCE: NEARMAP) 2 ALL DIMENSIONS ARE TO FACE OF KERB & CHANNEL UNLESS SPECIFIED OTHERWISE 3 MAIN ROAD - BURKE ROAD (VARIED SPEED ZONE 60km/h SOUTHBOUND & 40km/h NORTHBOUND AT SCHOOL TIMES)	S STEPHENSON	J STONE	G28846-01-00.dgn	0 2.5 5 1:250 (A3)	6 of 7	G28846-04-06	
C	UPDATED ISSUE	SOK	J STONE (RPE0008161)	06 MAY 2024								
D	UPDATED ISSUE	SOK	J STONE (RPE0008161)	09 MAY 2024								
E	UPDATED ISSUE	SOK	J STONE (RPE0008161)	17 MAY 2024								
F	UPDATED ISSUE	SOK	J STONE (RPE0008161)	03 JUN 2024								

Traffix Group
Level 28, 459 Collins Street
Melbourne, Victoria 3000
+61 3 9822 2888
www.traffixgroup.com.au

**173 BURKE ROAD
GLEN IRIS
STONNINGTON CITY
SWEEP PATH ASSESSMENTS**

This copied document to be made available for the sole purpose of enabling its consideration and review as part of a planning process under the Planning and Environment Act 1987. The document must not be used for any purpose which may breach any copyright

ADVERTISED PLAN



VEHICLE USED IN SIMULATION
(VEHICLE SPEED - 5km/h)
12.50

12.5m HRV

Width : 2.50 meters
Track : 2.50
Lock to Lock Time : 6.0
Steering Angle : 35.2

LEGEND

--- VEHICLE BODY
- - - BODY CLEARANCE (500mm)

PRELIMINARY PLAN
FOR DISCUSSION PURPOSES ONLY

WARNING
BEWARE OF UNDERGROUND SERVICES
The locations of underground services shown are approximate only and their exact position should be proven on site.

DATE: 05/20/24
MODEL: G28846-04-06A_S2
FILE: \Users\traffixgroup\My Documents\Projects\G28846-01-001 - Sarah\dgn

ISSUE	ISSUE DESCRIPTION	DESIGNER	CHECKED/APPROVED	ISSUE DATE	GENERAL NOTES
A	INITIAL ISSUE	GR	J STONE (RPE0008161)	15 APR 2024	1 BASE INFORMATION FROM SUPPLIED ARCHITECTS DRAWINGS / AERIAL PHOTOGRAPH (SOURCE: NEARMAP) 2 ALL DIMENSIONS ARE TO FACE OF KERB & CHANNEL UNLESS SPECIFIED OTHERWISE 3 MAIN ROAD - BURKE ROAD (VARIED SPEED ZONE 60km/h SOUTHBOUND & 40km/h NORTHBOUND AT SCHOOL TIMES)
B	UPDATED ISSUE	SS	J STONE (RPE0008161)	22 APR 2024	
C	UPDATED ISSUE	SOK	J STONE (RPE0008161)	06 MAY 2024	
D	UPDATED ISSUE	SOK	J STONE (RPE0008161)	09 MAY 2024	
E	UPDATED ISSUE	SOK	J STONE (RPE0008161)	17 MAY 2024	

DESIGNED	S STEPHENSON
CHECKED/APPROVED	J STONE
FILE NAME	G28846-01-00.dgn

Traffix Group	
Level 28, 459 Collins Street Melbourne, Victoria 3000 +61 3 9822 2888 www.traffixgroup.com.au	

173 BURKE ROAD
GLEN IRIS
STONNINGTON CITY
SWEPT PATH ASSESSMENTS

SCALE	0 2.5 5	SHEET No.	6 of 7	DWG No.	G28846-04-06A
1:250 (A3)					

This copied document to be made available for the sole purpose of enabling its consideration and review as part of a planning process under the Planning and Environment Act 1987. The document must not be used for any purpose which may breach any copyright

ADVERTISED PLAN

4m x 4m INDICATIVE SIGHT TRIANGLE

VEHICLE USED IN SIMULATION
(VEHICLE SPEED - 5km/h)
8.80

8.8m MRV meters
Width : 2.50
Track : 2.50
Lock to Lock Time : 6.0
Steering Angle : 34.0

LEGEND
- - - VEHICLE BODY
- - - - - BODY CLEARANCE (500mm)

PRELIMINARY PLAN
FOR DISCUSSION PURPOSES ONLY

WARNING
BEWARE OF UNDERGROUND SERVICES
The locations of underground services shown are approximate only and their exact position should be proven on site.

DATE: 3/06/2024
MODEL: G28846-04-06B SP2
FILE: \ms\sv\2\group\Sydney\IP\Projects\G28846-04-06B\Drawings\G28846-01-001 - Sarah.dgn

ISSUE	ISSUE DESCRIPTION	DESIGNER	CHECKED/APPROVED	ISSUE DATE
B	UPDATED ISSUE	SS	J STONE (RPE0008161)	22 APR 2024
C	UPDATED ISSUE	SOK	J STONE (RPE0008161)	06 MAY 2024
D	UPDATED ISSUE	SOK	J STONE (RPE0008161)	09 MAY 2024
E	UPDATED ISSUE	SOK	J STONE (RPE0008161)	17 MAY 2024
F	UPDATED ISSUE	SOK	J STONE (RPE0008161)	03 JUN 2024

GENERAL NOTES
1 BASE INFORMATION FROM SUPPLIED ARCHITECTS DRAWINGS / AERIAL PHOTOGRAPH (SOURCE: NEARMAP)
2 ALL DIMENSIONS ARE TO FACE OF KERB & CHANNEL UNLESS SPECIFIED OTHERWISE
3 MAIN ROAD - BURKE ROAD (VARIED SPEED ZONE 60km/h SOUTHBOUND & 40km/h NORTHBOUND AT SCHOOL TIMES)

DESIGNED	S STEPHENSON
CHECKED/APPROVED	J STONE
FILE NAME	G28846-01-00.dgn

Traffix Group
Level 28, 459 Collins Street
Melbourne, Victoria 3000
+61 3 9822 2888
www.traffixgroup.com.au

173 BURKE ROAD
GLEN IRIS
STONNINGTON CITY
SWEPT PATH ASSESSMENTS

SCALE 1:250 (A3) SHEET No. 6 of 7 DWG No. G28846-04-06B

This copied document to be made available for the sole purpose of enabling its consideration and review as part of a planning process under the Planning and Environment Act 1987. The document must not be used for any purpose which may breach any copyright.

ADVERTISED PLAN

4m x 4m INDICATIVE SIGHT TRIANGLE

VEHICLE USED IN SIMULATION
(VEHICLE SPEED - 5km/h)
8.80

8.8m MRV meters
Width : 2.50
Track : 2.50
Lock to Lock Time : 6.0
Steering Angle : 34.0

LEGEND
- - - - - VEHICLE BODY
- - - - - BODY CLEARANCE (500mm)

PRELIMINARY PLAN
FOR DISCUSSION PURPOSES ONLY

WARNING
BEWARE OF UNDERGROUND SERVICES
The locations of underground services shown are approximate only and their exact position should be proven on site.

DATE: 3/06/2024
MODEL: G28846-04-06C SP2
FILE: \\msrv02\group\synergy\Projects\G28846-04-06C\Drawings\G28846-01-001 - Sarah.dgn

ISSUE	ISSUE DESCRIPTION	DESIGNER	CHECKED/APPROVED	ISSUE DATE	GENERAL NOTES
B	UPDATED ISSUE	SS	J STONE (RPE0008161)	22 APR 2024	1 BASE INFORMATION FROM SUPPLIED ARCHITECTS DRAWINGS / AERIAL PHOTOGRAPH (SOURCE: NEARMAP) 2 ALL DIMENSIONS ARE TO FACE OF KERB & CHANNEL UNLESS SPECIFIED OTHERWISE 3 MAIN ROAD - BURKE ROAD (VARIED SPEED ZONE 60km/h SOUTHBOUND & 40km/h NORTHBOUND AT SCHOOL TIMES)
C	UPDATED ISSUE	SOK	J STONE (RPE0008161)	06 MAY 2024	
D	UPDATED ISSUE	SOK	J STONE (RPE0008161)	09 MAY 2024	
E	UPDATED ISSUE	SOK	J STONE (RPE0008161)	17 MAY 2024	
F	UPDATED ISSUE	SOK	J STONE (RPE0008161)	03 JUN 2024	

DESIGNED	S STEPHENSON
CHECKED/APPROVED	J STONE
FILE NAME	G28846-01-00.dgn

Traffix Group
Level 28, 459 Collins Street
Melbourne, Victoria 3000
+61 3 9822 2888
www.traffixgroup.com.au

173 BURKE ROAD
GLEN IRIS
STONNINGTON CITY
SWEPT PATH ASSESSMENTS

SCALE 1:250 (A3)

SHEET No. 6 of 7 DWG No. G28846-04-06C