

COSGROVE SOLAR FARM

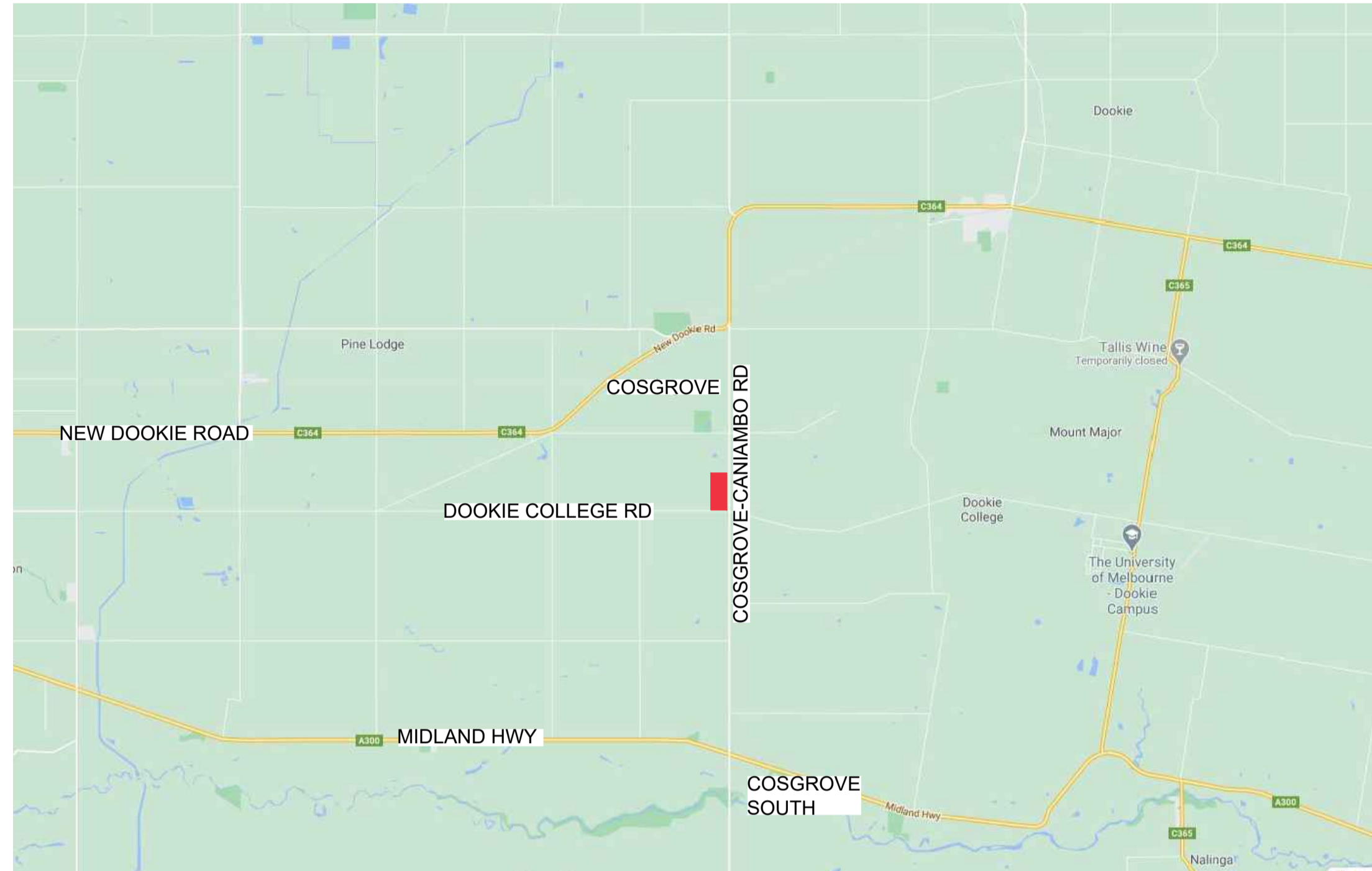
LANDSCAPE BUFFER PLANTING

290 COSGROVE-CANIAMBO ROAD, COSGROVE, VICTORIA

ADVERTISED PLAN



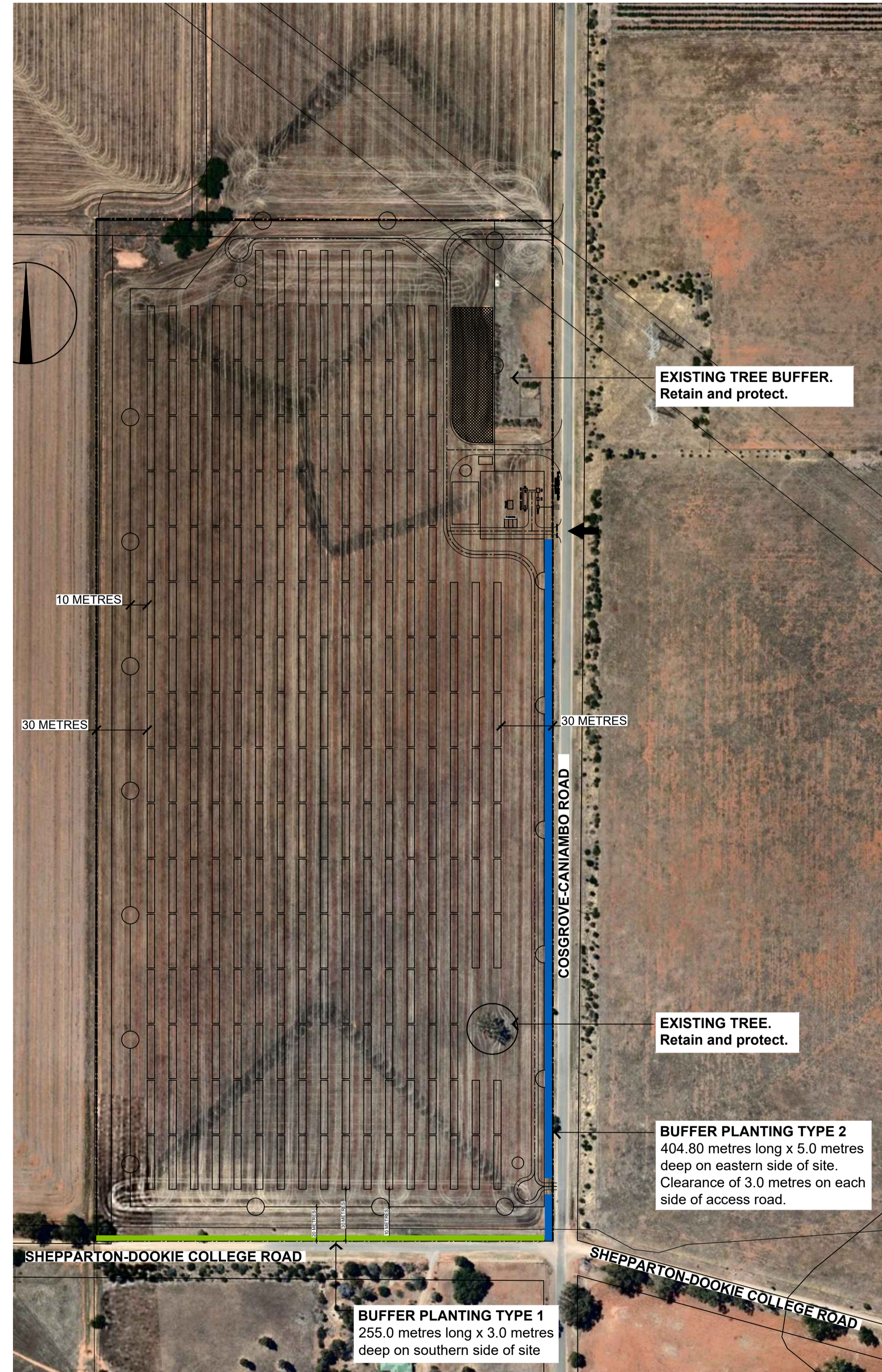
This copied document to be made available for the sole purpose of enabling its consideration and review as part of a planning process under the Planning and Environment Act 1987. The document must not be used for any purpose which may breach any copyright



1 LOCATION PLAN
SITE LOCATION NTS

STANDARD NOTES

- SET OUT AND DIMENSIONS.** WRITTEN DIMENSIONS SHALL TAKE PRECEDENCE OVER SCALE. CHECK ALL DRAWING SCALES IN CONJUNCTION WITH DRAWING SIZE. DRAWINGS MUST BE READ IN ASSOCIATION WITH OTHER CONSTRUCTION DRAWINGS.
- SERVICES AND SITE ASSETS.** THE CONTRACTOR SHALL VERIFY THE NATURE AND LOCATION OF THE 'AS BUILT' OF ALL EXISTING SERVICES AND RETAINED SITE ASSETS AFFECTED BY THEIR WORKS. SERVICES SHOWN ARE INDICATIVE ONLY.
- REFERENCE.** THE CONTRACTOR SHALL REFER TO ALL DRAWINGS PRIOR TO AND DURING THE WORKS.
- DISCREPANCIES.** NOTIFY SUPERINTENDENT OF ANY SUSPECTED OR KNOWN DISCREPANCIES OR ERRORS PRIOR TO ORDERING OF AFFECTED MATERIALS AND OR CONSTRUCTION OF AFFECTED WORKS.
- RELEVANT STANDARDS.** THE CONTRACTOR SHALL UNDERTAKE ALL PRICING AND WORKS IN ACCORDANCE WITH CURRENT INDUSTRY BEST PRACTICE AND ALL RELEVANT AUSTRALIAN STANDARDS.
- EXISTING TREES**
EXISTING TREES TO BE PROTECTED AND RETAINED DURING CONSTRUCTION. REFER AS4970 PROTECTION OF TREES ON DEVELOPMENT SITES. THE CONTRACTOR SHALL USE THE FORMULA BASED ON HEIGHT AND DBH AND SUPPLY AND ERECT THE TREE PROTECTION ZONE FOR EACH TREE. NO EARTHWORKS, LEVEL CHANGES OR STOCKPILING IS TO OCCUR WITHIN THE TREE PROTECTION ZONE.
- FALLS.** ALL AREAS ARE TO BE GRADED EVENLY TO ENSURE POSITIVE DRAINAGE. PONDING IS UNACCEPTABLE.
- BUFFER PLANTING AREA PREPARATION.** APPLY APPROPRIATE HERBICIDE TO REMOVE WEEDS AND PASTURE GRASS. FOR ALL BUFFER PLANTING TYPES, CULTIVATE ON SITE TOPSOIL TO 200mm DEPTH WITH SOIL AMELIORATION ADDITIVES. SUPPLY AND INSTALL 100mm COMPACTED DEPTH OF APPROVED MULCH.
- CLEARANCE TO ROADWAYS**
ENSURE THAT ALL PLANTING HAS A CLEARANCE OF MINIMUM 3.0 METRES TO ALL ROAD TRACKS.



2 LANDSCAPE PLAN
GENERAL ARRANGEMENT OF BUFFER PLANTING 1:2000@A1

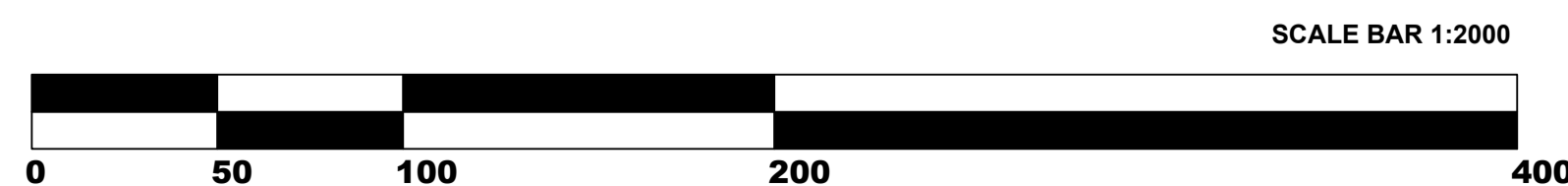
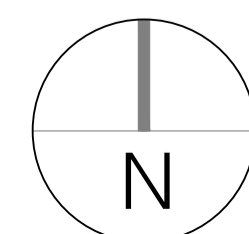
LEGEND

- PROPERTY BOUNDARY
- SOLAR FARM INFRASTRUCTURE
- ROAD TRACKS
- PHOTOVOLTAIC ARRAYS
- SECURITY FENCING

LANDSCAPE BUFFER PLANTING

- BUFFER PLANTING TYPE 1**
3.0 metres deep under OH power lines on southern side of site (shrubs less than 4.0 metres high)
- BUFFER PLANTING TYPE 2**
5.0 metres deep in clear areas on eastern side of site

ISSUE	DATE	COMMENT
A	08/09/2020	Preliminary. Client review
B	29/09/2020	Council submission

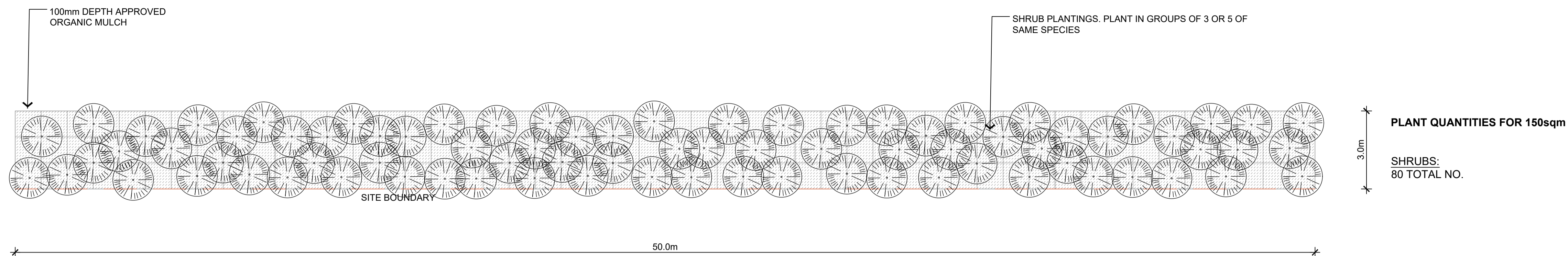


PO Box 1198 Albury NSW 2640
M 0411 811308
E fiona@fsla.com.au
www.fsla.com.au
ABN 68 437 343 209

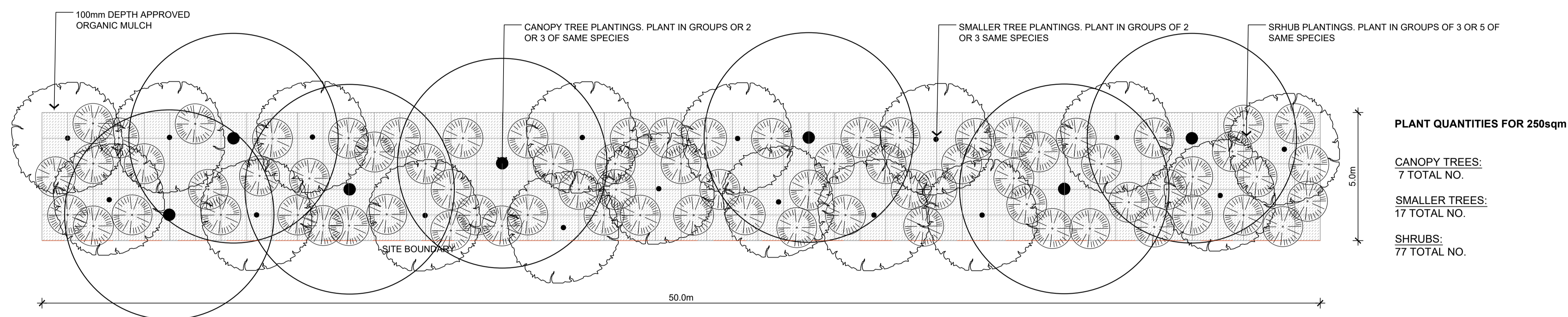
© 2020 Copyright. Copyright of designs is retained by FSLA. Written approval is required for reproduction.

Project:	COSGROVE SOLAR FARM	
Address:	290 COSGROVE-CANIAMBO ROAD, COSGROVE, VICTORIA	
Drawing Title:	LANDSCAPE PLAN	Revision: B
Date:	07 SEPTEMBER 2020	Issue: COUNCIL SUBMISSION
Dwg No:	20019 L01	

This copied document to be made available for the sole purpose of enabling its consideration and review as part of a planning process under the Planning and Environment Act 1987. The document must not be used for any purpose which may breach any copyright

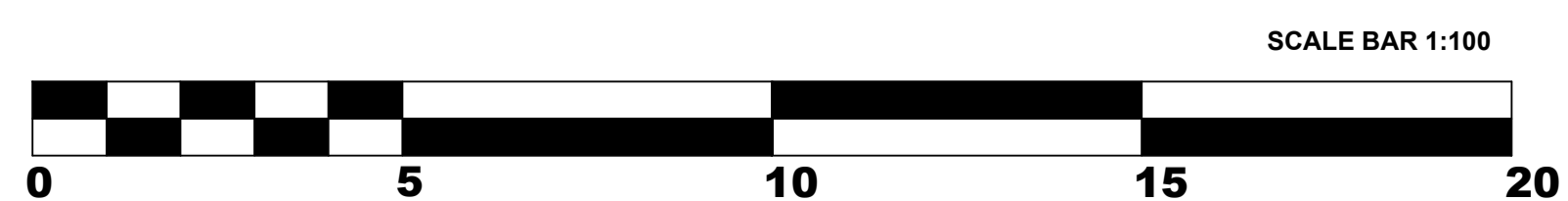


1 TYPICAL PLANTING PLAN - 50m TRANSECT
- BUFFER PLANTING TYPE 1 1:100@A1



2 TYPICAL PLANTING PLAN - 50m TRANSECT
- BUFFER PLANTING TYPE 2 AT EXISTING TREES 1:100@A1

ISSUE	DATE	COMMENT
A	08/09/2020	Preliminary. Client review
B	29/09/2020	Council submission



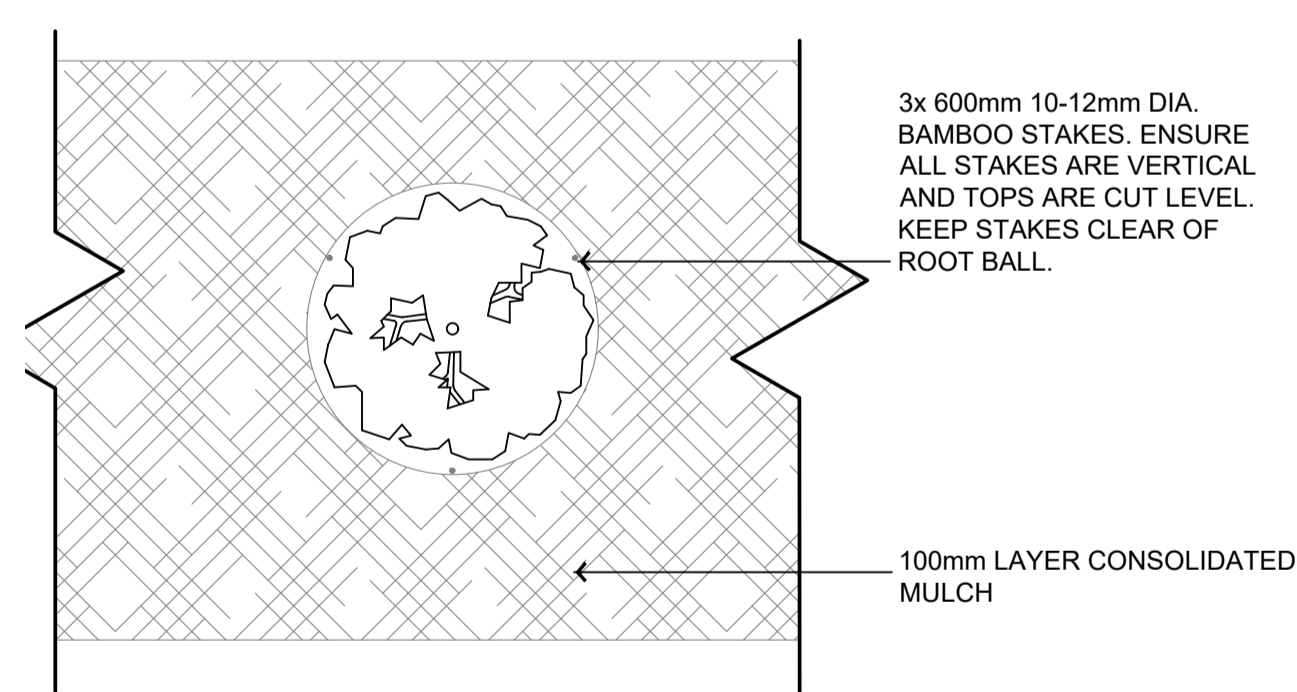
PO Box 1198 Albury NSW 2640
M 0411 811308
E fiona@fsla.com.au
www.fsla.com.au
ABN 68 437 343 209

Project: COSGROVE SOLAR FARM		Revision: B
Address: 290 COSGROVE-CANIAMBO ROAD, COSGROVE, VICTORIA		
Drawing Title: TYPICAL BUFFER PLANTING PLANS		Dwg No: 20019 L02
Date: 07 SEPTEMBER 2020	Issue: COUNCIL SUBMISSION	

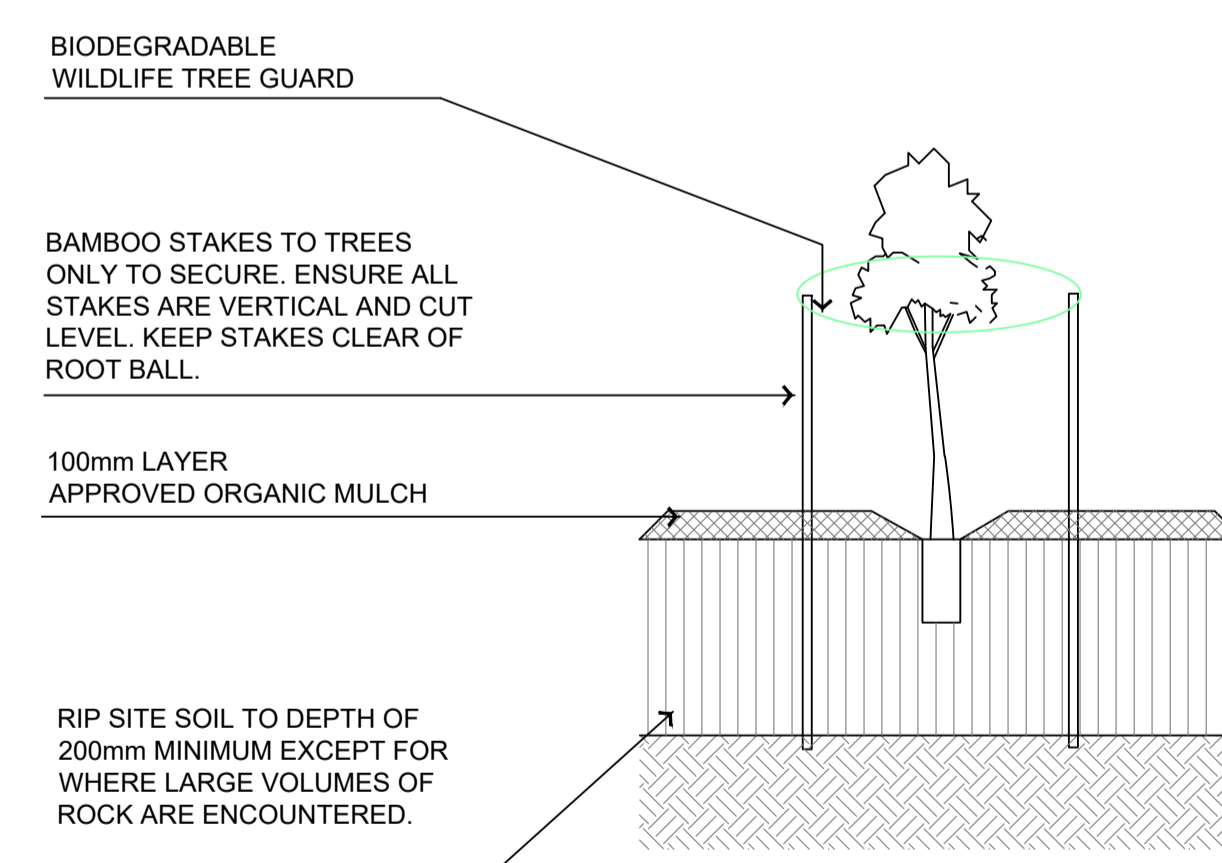
This copied document to be made available for the sole purpose of enabling its consideration and review as part of a planning process under the Planning and Environment Act 1987. The document must not be used for any purpose which may breach any copyright

Typical Plant Schedule

Botanical Name	Common Name	Installation Size	% of Mix	Mature height (m)	Mature spread (m)
Canopy Trees					
<i>Acacia salicina</i>	Native Willow	Tubestock	30%	20m	5m
<i>Eucalyptus albens</i>	White Box	Tubestock	10%	25m	15m
<i>Eucalyptus melliodora</i>	Yellow Box	Tubestock	15%	30m	30m
<i>Eucalyptus microcarpa</i>	Grey Box	Tubestock	30%	25m	20m
<i>Eucalyptus polyanthemos</i>	Red Box	Tubestock	15%	20m	15m
			100%		
Smaller Trees/Large Shrubs					
<i>Acacia pycnantha</i>	Golden Wattle	Tubestock	20%	8m	6m
<i>Acacia pendula</i>	Buloke	Tubestock	20%	13m	6m
<i>Allocasuarina leuhmannii</i>	Weeping Boree	Tubestock	20%	20m	6m
<i>Banksia marginata</i>	Silver Banksia	Tubestock	20%	12m	5m
<i>Bursaria spinosa</i>	Native Blackthorn	Tubestock	20%	10m	3m
			100%		
Shrubs less than 4.0 metres					
<i>Acacia acinacea</i>	Gold Dust Wattle	Tubestock	10%	2.5m	4m
<i>Acacia brachybotrya</i>	Grey Mulga	Tubestock	20%	3m	6m
<i>Acacia hakeoides</i>	Hakea Wattle	Tubestock	10%	3m	6m
<i>Acacia montana</i>	Mallee Wattle	Tubestock	20%	2.5m	7m
<i>Cassinia arcuata</i>	Drooping Cassinia	Tubestock	20%	2m	2m
<i>Dadonea viscosa ssp. cuneata</i>	Wedge-leaf Hop Bush	Tubestock	20%	3m	2m
			100%		



1 TYPICAL DETAIL PLAN
TUBESTOCK PLANTING WITH GUARD 1:20@A1



2 TYPICAL DETAIL
TUBESTOCK PLANTING WITH GUARD 1:20@A1

ISSUE	DATE	COMMENT
A	08/09/2020	Preliminary. Client review
B	29/09/2020	Council submission



Project: COSGROVE SOLAR FARM		Revision: B
Address: 290 COSGROVE-CANIAMBO ROAD, COSGROVE, VICTORIA		Dwg No: 20019 L03
Drawing Title: TYPICAL BUFFER PLANTING PLAN, DETAILS AND PLANT SCHEDULE		Issue: COUNCIL SUBMISSION
Date: 07 SEPTEMBER 2020		