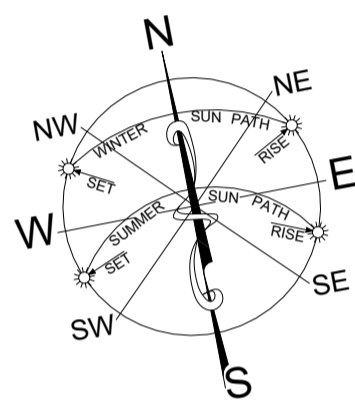
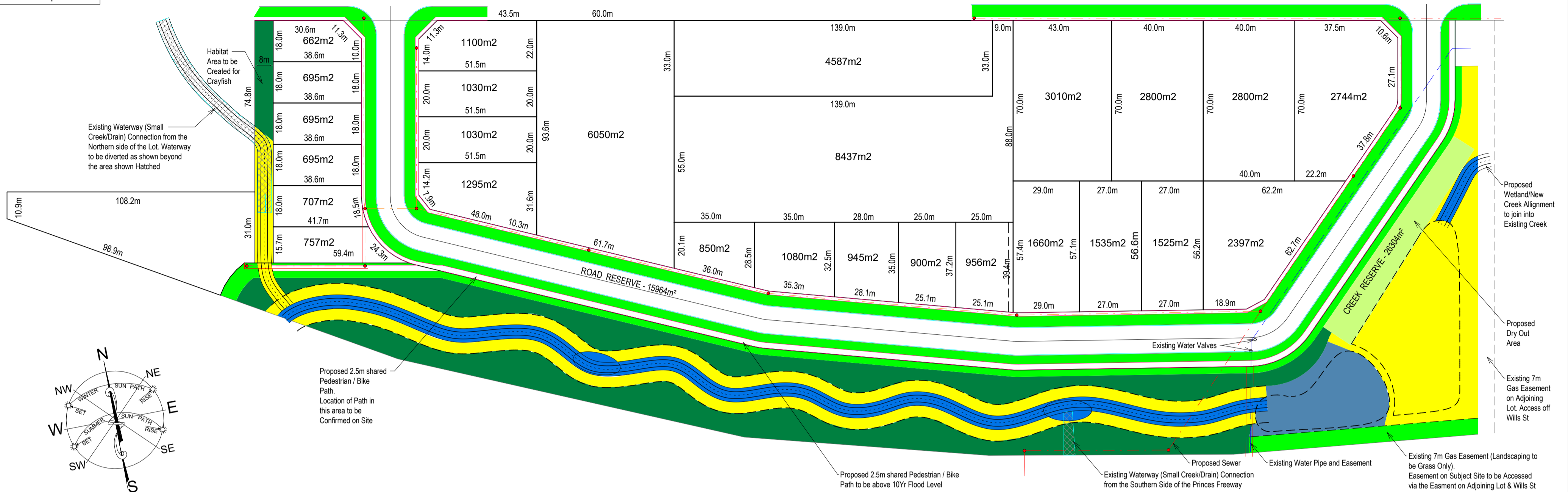


Note:
Streetscape to include Grassed Verges and Street Trees from Councils Preferred Species

WILLS STREET

WILLS STREET

KING STREET



Proposed 2.5m shared Pedestrian / Bike Path.
Location of Path in this area to be Confirmed on Site

Proposed 2.5m shared Pedestrian / Bike Path to be above 10Yr Flood Level

Existing Water Valves

Proposed Sewer
Existing Waterway (Small Creek/Drain) Connection from the Southern Side of the Princes Freeway

Existing Water Pipe and Easement

Existing 7m Gas Easement (Landscaping to be Grass Only).
Easement on Subject Site to be Accessed via the Easement on Adjoining Lot & Wills St

Wetland & Sediment Pond

Botanical Name	Common Name	Pot Format
Terrestrial/Littoral Zone - 4 plants per m²		
Tall canopy		
<i>Acacia melanoxylon</i>	Blackwood	200cm³
<i>Eucalyptus strzeleckii</i>	Strzelecki Gum	200cm³
<i>Eucalyptus ovata</i>	Swamp Gum	200cm³
<i>Eucalyptus viminalis</i>	Manna Gum	200cm³
<i>Eucalyptus obliqua</i>	Messmate	200cm³
Understorey		
<i>Acacia dealbata</i>	Silver Wattle	200cm³
<i>Acacia verticillata</i>	Prickly Moses	200cm³
<i>Bursaria spinosa</i>	Sweet Bursaria	200cm³
<i>Cassinia aculeata</i>	Common Cassinia	200cm³
<i>Coprosma quadrifida</i>	Prickly Currant-bush	200cm³
<i>Goodenia ovata</i>	Hop Goodenia	200cm³
<i>Leptospermum continentale</i>	Prickly Teatree	200cm³
<i>Leptospermum lanigerum</i>	Woolly Teatree	200cm³
<i>Melaleuca ericifolia</i>	Swamp Paperbark	200cm³
<i>Melaleuca squarrosa</i>	Scented Paperbark	200cm³
<i>Olearia lirata</i>	Snowy Daisy-bush	200cm³
<i>Ozothamnus ferrugineus</i>	Tree Everlasting	200cm³
<i>Pomaderris aspera</i>	Hazel Pomaderris	200cm³
<i>Prostanthera lasianthos</i>	Victorian Mint-bush	200cm³
Groundcovers/grasses/sedges/lilies/climbers		
<i>Acaena nova-zelandiae</i>	Bidgee-widgee	200cm³
<i>Carex appressa</i>	Tall Sedge	200cm³
<i>Clematis aristata</i>	Mountain Clematis	200cm³
<i>Dichondra repens</i>	Kidney Weed	200cm³
<i>Dianella tasmanica</i>	Tasman Flax-lily	200cm³
<i>Gahnia sieberiana</i>	Red-fruit Saw-sedge	200cm³
<i>Lomandra longifolia</i>	Spiny-headed Mat-rush	200cm³
<i>Poa ensiformis</i>	Purple-sheath Tussock-grass	200cm³
<i>Poa labillardieri</i>	Common Tussock-grass	200cm³
<i>Microlaena stipoides</i>	Weeping Grass	200cm³
<i>Viola hederacea</i>	Native Violet	200cm³
Ephemeral Marsh - 6 per m²		
<i>Carex appressa</i>	Tall Sedge	90cm³
<i>Carex fascicularis</i>	Tassel Sedge	90cm³
<i>Carex tereticaulis</i>	Hollow Sedge	90cm³
<i>Cyperus lucidus</i>	Leafy Flat-sedge	90cm³
<i>Juncus ambilis</i>	Hollow Rush	90cm³
<i>Juncus australis</i>	Austral Rush	90cm³
<i>Juncus flavidus</i>	Yellow Rush	90cm³
<i>Juncus gregiflorus</i>	Green Rush	90cm³
<i>Juncus pallidus</i>	Pale Rush	90cm³
<i>Juncus pauciflorus</i>	Loose Flower Rush	90cm³
<i>Juncus procerus</i>	Tall Rush	90cm³
<i>Juncus subsecundus</i>	Finger Rush	90cm³
Shallow Marsh - 2 per m²		
<i>Alisma plantago-aquatica</i>	Water Plantain	550cm³

<i>Baliosion tetraphyllum</i>	Tassel Cord-rush	550cm³
<i>Balboschoenus caldwelii</i>	Salt Club-rush	550cm³
<i>Balboschoenus medianus</i>	Marsh Club-rush	550cm³
<i>Crassula helmsii</i>	Swamp Stonecrop	550cm³
<i>Eleocharis acuta</i>	Common Spike Rush	550cm³
<i>Lycopus australis</i>	Australian Gypswort	550cm³
<i>Lythrum salicaria</i>	Purple Loose-strife	550cm³
<i>Neopaxia australasica</i>	White Purslane	550cm³
<i>Persicaria decipiens</i>	Slender Knotweed	550cm³
<i>Persicaria praetermissa</i>	Spotted Knotweed	550cm³
<i>Ranunculus inundatus</i>	River Buttercup	550cm³
Deep Marsh - 2 per m²		
<i>Baumea articulata</i>	Jointed Twig - Sedge	550cm³
<i>Cladium procerum</i>	Prickly Twig-rush	550cm³
<i>Myriophyllum crispatum</i>	Water-milfoil	550cm³
<i>Myriophyllum simulans</i>	Amphibious Milfoil	550cm³
<i>Eleocharis spachelata</i>	Tall Spike Rush	550cm³
<i>Schoenoplectus tabernaemontani</i>	River Club-rush	550cm³
<i>Triglochin procerum</i>	Water Ribbons	550cm³
Submerged Marsh - 1 per m²		
<i>Potamogeton crispus</i>	Curly-leaf Pondweed	550cm³
<i>Potamogeton ochreatus</i>	Blunt Pondweed	550cm³
<i>Vallisneria australis</i>	Eel Grass	550cm³

Pot Notes:
90cm³ Hiko cell
200cm³ Forestry tube
550cm³ Aquatic pot

Lower Bank Channel

Botanical Name	Common Name	Pot Format
Ephemeral Marsh - 6 per m²		
<i>Acaena nova-zelandiae</i>	Bidgee-widgee	90cm³
<i>Carex appressa</i>	Tall Sedge	90cm³
<i>Carex fascicularis</i>	Tassel Sedge	90cm³
<i>Cyperus lucidus</i>	Leafy Flat-sedge	90cm³
<i>Juncus ambilis</i>	Hollow Rush	90cm³
<i>Juncus australis</i>	Austral Rush	90cm³
<i>Juncus flavidus</i>	Yellow Rush	90cm³
<i>Juncus gregiflorus</i>	Green Rush	90cm³
<i>Juncus pallidus</i>	Pale Rush	90cm³
<i>Juncus pauciflorus</i>	Finger Rush	90cm³
<i>Juncus procerus</i>	Tall Rush	90cm³
<i>Juncus subsecundus</i>	Finger Rush	90cm³
<i>Poa ensiformis</i>	Purple-sheath Tussock-grass	90cm³
<i>Poa labillardieri</i>	Common Tussock-grass	90cm³
Shallow Marsh - 2 per m²		
<i>Alisma plantago-aquatica</i>	Water Plantain	550cm³
<i>Crassula helmsii</i>	Swamp Stonecrop	550cm³
<i>Eleocharis acuta</i>	Common Spike Rush	550cm³
<i>Lycopus australis</i>	Australian Gypswort	550cm³
<i>Lythrum salicaria</i>	Purple Loose-strife	550cm³
<i>Persicaria decipiens</i>	Slender Knotweed	550cm³
<i>Persicaria praetermissa</i>	Spotted Knotweed	550cm³
Deep Marsh - 2 per m²		
<i>Baumea articulata</i>	Jointed Twig - Sedge	550cm³
<i>Schoenoplectus tabernaemontani</i>	River Club-rush	550cm³
<i>Triglochin procerum</i>	Water Ribbons	550cm³
Submerged Marsh - 1 per m²		
<i>Vallisneria australis</i>	Eel Grass	550cm³

Pot Notes:
90cm³ Hiko cell
550cm³ Aquatic pot

Primary Buffer Zone

Botanical Name	Common Name	Pot Format
Ephemeral Marsh - 6 per m²		
<i>Acaena nova-zelandiae</i>	Bidgee-widgee	90cm³
<i>Carex appressa</i>	Tall Sedge	90cm³
<i>Carex fascicularis</i>	Tassel Sedge	90cm³
<i>Dichondra repens</i>	Kidney Weed	90cm³
<i>Juncus australis</i>	Austral Rush	90cm³
<i>Juncus flavidus</i>	Yellow Rush	90cm³
<i>Juncus gregiflorus</i>	Green Rush	90cm³
<i>Juncus subsecundus</i>	Finger Rush	90cm³
<i>Lomandra longifolia</i>	Spiny-headed Mat-rush	90cm³
<i>Lycopus australis</i>	Australian Gypswort	90cm³
<i>Lythrum salicaria</i>	Purple Loose-strife	90cm³
<i>Poa ensiformis</i>	Purple-sheath Tussock-grass	90cm³
<i>Poa labillardieri</i>	Common Tussock-grass	90cm³
<i>Persicaria decipiens</i>	Slender Knotweed	90cm³

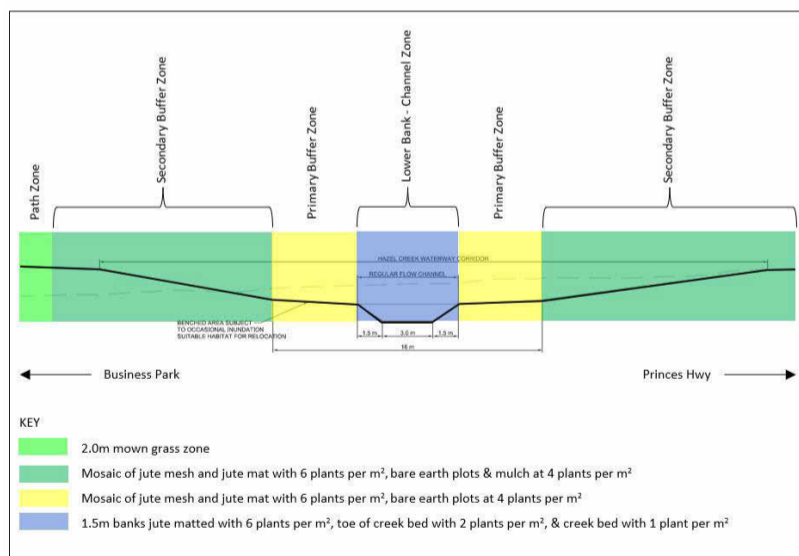
Pot Notes:
90cm³ Hiko cell

Secondary Buffer Zone

Botanical Name	Common Name	Pot Format	Quantity
Terrestrial/Littoral Zone - 4 plants per m²			
Tall canopy			
<i>Acacia melanoxylon</i>	Blackwood	200cm³	
<i>Eucalyptus strzeleckii</i>	Strzelecki Gum	200cm³	
<i>Eucalyptus ovata</i>	Swamp Gum	200cm³	
<i>Eucalyptus viminalis</i>	Manna Gum	200cm³	
<i>Eucalyptus obliqua</i>	Messmate	200cm³	
Understorey			
<i>Acacia dealbata</i>	Silver Wattle	200cm³	
<i>Acacia verticillata</i>	Prickly Moses	200cm³	
<i>Bursaria spinosa</i>	Sweet Bursaria	200cm³	
<i>Cassinia aculeata</i>	Common Cassinia	200cm³	
<i>Coprosma quadrifida</i>	Prickly Currant-bush	200cm³	
<i>Goodenia ovata</i>	Hop Goodenia	200cm³	
<i>Leptospermum continentale</i>	Prickly Teatree	200cm³	
<i>Leptospermum lanigerum</i>	Woolly Teatree	200cm³	
<i>Melaleuca ericifolia</i>	Swamp Paperbark	200cm³	
<i>Melaleuca squarrosa</i>	Scented Paperbark	200cm³	
<i>Olearia lirata</i>	Snowy Daisy-bush	200cm³	
<i>Ozothamnus ferrugineus</i>	Tree Everlasting	200cm³	
<i>Pomaderris aspera</i>	Hazel Pomaderris	200cm³	
<i>Prostanthera lasianthos</i>	Victorian Mint-bush	200cm³	
Groundcovers/grasses/sedges/lilies/climbers			
<i>Acaena nova-zelandiae</i>	Bidgee-widgee	200cm³	
<i>Carex appressa</i>	Tall Sedge	200cm³	
<i>Clematis aristata</i>	Mountain Clematis	200cm³	
<i>Dichondra repens</i>	Kidney Weed	200cm³	
<i>Dianella tasmanica</i>	Tasman Flax-lily	200cm³	
<i>Gahnia sieberiana</i>	Red-fruit Saw-sedge	200cm³	
<i>Lomandra longifolia</i>	Spiny-headed Mat-rush	200cm³	
<i>Poa ensiformis</i>	Purple-sheath Tussock-grass	200cm³	
<i>Poa labillardieri</i>	Common Tussock-grass	200cm³	
<i>Microlaena stipoides</i>	Weeping Grass	200cm³	
<i>Viola hederacea</i>	Native Violet	200cm³	

Pot Notes:
90cm³ Hiko cell
200cm³ Forestry tube
550cm³ Aquatic pot

DESIGN FEATURES



A11



Advantage All Consulting P/L
Ph: 03 5625 5294
Email: info@advantageall.com.au
ABN: 16 587 630 031 ACN: 631 617 699
CCB-L-71635 CDP-AD72766

CONTRACTOR MUST VERIFY ALL DIMENSIONS AND LEVELS AT THE JOB PRIOR TO COMMENCING ANY WORK OR MAKING ANY SHOP DRAWINGS.
DO NOT SCALE DRAWINGS. ALWAYS USE WRITTEN DIMENSIONS.

THIS DRAWING IS COPYRIGHT & REMAINS THE PROPERTY OF ADVANTAGE ALL CONSULTING P/L. IT CANNOT BE COPIED, ALTERED OR REPRODUCED IN ANY FORM WITHOUT WRITTEN APPROVAL.
Date: _____
Builders Signature: _____

Signature 1: _____

Signature 2: _____

JOB ADDRESS:
Wills Street, Warragul, 3820

CLIENT:
Freeway Business Park P/L

JOB No: 01001
DRAWN: Lincoln

4/05/2022 3:53:18 PM
REVISION: Planning

SHEET (A2): A11
SCALE: 1 : 1250

DESIGN TYPE:
Proposed Development

Drawing:
Landscape Concept Plan